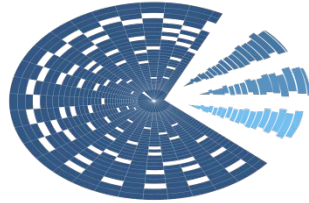


በኢትዮጵያ ፌዴራላዊ ዲሞክራሲያዊ ሪፐብሊክ

በብሔራዊ ልማትና ፕላንኒንግ ኮሚሽን

የማዕከላዊ ስታቲስቲክስ ኤጀንሲ



**CENTRAL  
STATISTICS  
AGENCY**  
ኢትዮጵያ

THE FEDERAL DEMOCRATIC REPUBLIC OF ETHIOPIA  
NATIONAL DEVELOPMENT AND PLANNING COMMISSION

CENTRAL STATISTICS AGENCY

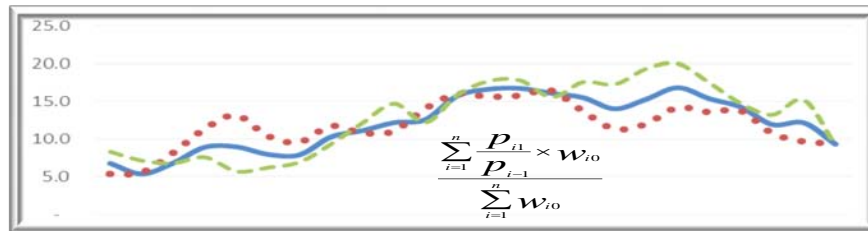
የአገር አቀፍና የክልሎች የሽማግሌት ዋጋ መመዘኛ ኢንዱክሶች

ቦታህሳስወር 2013 ዓ.ም.

[ታህሳስ 2009= 100]

መረጃ ቁጥር 25

**COUNTRY AND REGIONAL LEVEL CONSUMER PRICE INDICES (CPI)**



[December 2016=100]

For the month of December 2020

Information No. 25

አዲስ አበባ

Tel: 251-11-1 553011 ታህሳስ27 ቀን 2013 ዓ.ም.

Fax: 251-11-1550334. ADDIS ABABA

Web-site: <https://www.statsethiopia.gov.et> 05 January 2021

መግቢያ ..... 1

የዋጋዎች ገንዘብ ስራ ..... 8

ሠንጠረዥ ሐ: በአገር አቀፍ ደረጃ የ12 ወር ተንከባላይ አማካይ የዋጋ ገንዘብ ስራ .. 10

ሠንጠረዥ መ: የዘንድሮው የአምናው ተመሳሳይ ወሮች የሽያጭ ገንዘብ ስራ

ኢንዱስትሪው ጥንቅቅ በአገር አቀፍ ደረጃ ማጠቃለያ ..... 11

ሠንጠረዥ ሠ: የአሁኑ ናይሎው ወር የሽያጭ ገንዘብ ስራ ኢንዱስትሪ

በአገር አቀፍ ደረጃ ማጠቃለያ ..... 13

**የሠንጠረዦች ዝርዝር**

ሠንጠረዥ ሀ: በጥናቱ የተሸፈኑ ገበያዎችና በኢንዱስትሪው ማዕቀፍ የተካተቱ ዕቃዎችና

በዕቃዎች/አገልግሎቶች ብዛት በክልል ..... 3

ሠንጠረዥ 1 ሀ: ጠቅላላ የሽያጭ ገንዘብ ስራ ኢንዱስትሪው የካተት ክፍሎች

በአገር አቀፍ ደረጃ ..... 17

ሠንጠረዥ 1 ለ: ጠቅላላ የምግብና የምግብ ክፍሎች የሽያጭ ገንዘብ ስራ

ኢንዱስትሪው ..... 18

ሠንጠረዥ 1 ሐ: አገር አቀፍ የቤት ኪራይ ፣ የቤት መስሪያ እቃዎች ውሃና ኢነርጂ

የሽያጭ ገንዘብ ስራ ኢንዱስትሪው ..... 19

ሠንጠረዥ 2 ሀ: ጠቅላላ የሽያጭ ገንዘብ ስራ ኢንዱስትሪው

በአገር አቀፍ ክፍሎች ደረጃ ..... 20

ሠንጠረዥ 2 ለ: የምግብ ገንዘብ ስራ ኢንዱስትሪው በአገር አቀፍ

ክፍሎች ደረጃ ..... 22

ሠንጠረዥ 3 ሀ: ጠቅላላ የሽያጭ ገንዘብ ስራ ኢንዱስትሪው የተካተቱ

ክፍሎች ለአዲስ አበባ ከተማ መስተዳደር ..... 24

ሠንጠረዥ 3 ለ: ጠቅላላ የምግብና የምግብ ክፍሎች የሽያጭ ገንዘብ ስራ

ኢንዱስትሪው ለአዲስ አበባ ከተማ መስተዳደር ..... 25

ሠንጠረዥ 4 ሀ: ጠቅላላ የሽያጭ ገንዘብ ስራ ኢንዱስትሪው የተካተቱ

ክፍሎች ለአፋር ክልላዊ መንግስት ..... 26

ሠንጠረዥ 4 ለ: ጠቅላላ የምግብና የምግብ ክፍሎች የሽያጭ ገንዘብ ስራ

ኢንዱስትሪው ለአፋር ክልላዊ መንግስት ..... 27

ሠንጠረዥ 5 ሀ: ጠቅላላ የሽያጭ ገንዘብ ስራ ኢንዱስትሪው የተካተቱ

ክፍሎች አማራጭ አልላዊ መንግስት.....	28
ሠንጠረዥ 5ላ: ጠቅላላ ምግብና የምግብ ክፍሎች የሽማግሌ ጋመመዘኛ ኢንዱስትሪ አማራጭ አልላዊ መንግስት.....	29
ሠንጠረዥ 6ሀ: ጠቅላላ የሽማግሌ ጋመመዘኛ ኢንዱስትሪ በስርዓተ ካተቱ ክፍሎች ለቤንሻንጉል-ጉሙዝ አልላዊ መንግስት.....	30
ሠንጠረዥ 6ለ: ጠቅላላ ምግብና የምግብ ክፍሎች የሽማግሌ ጋመመዘኛ ለቤንሻንጉል-ጉሙዝ አልላዊ መንግስት .....	31
ሠንጠረዥ 7ሀ: ጠቅላላ የሽማግሌ ጋመመዘኛ ኢንዱስትሪ በስርዓተ ካተቱ ክፍሎች ለድሬድዎ አስተዳደር ካውንስል .....	32
ሠንጠረዥ 7ለ: ጠቅላላ ምግብና የምግብ ክፍሎች የሽማግሌ ጋመመዘኛ ለድሬድዎ አስተዳደር ካውንስል.....	33
ሠንጠረዥ 8ሀ: ጠቅላላ የሽማግሌ ጋመመዘኛ ኢንዱስትሪ በስርዓተ ካተቱ ክፍሎች ለጋምቤላ ህዝቦች አልላዊ መንግስት .....	34
ሠንጠረዥ 8ለ: ጠቅላላ ምግብና የምግብ ክፍሎች የሽማግሌ ጋመመዘኛ ለጋምቤላ ህዝቦች አልላዊ መንግስት.....	35
ሠንጠረዥ 9ሀ: ጠቅላላ የሽማግሌ ጋመመዘኛ ኢንዱስትሪ በስርዓተ ካተቱ ክፍሎች ለሐረር ህዝብ አልላዊ መንግስት.....	36
ሠንጠረዥ 9ለ: ጠቅላላ ምግብና የምግብ ክፍሎች የሽማግሌ ጋመመዘኛ ኢንዱስትሪ ለሐረር ህዝብ አልላዊ መንግስት.....	37
ሠንጠረዥ 10ሀ: ጠቅላላ የሽማግሌ ጋመመዘኛ ኢንዱስትሪ በስርዓተ ካተቱ ክፍሎች ለኦሚያ አልላዊ መንግስት.....	38
ሠንጠረዥ 10ለ: ጠቅላላ ምግብና የምግብ ክፍሎች የሽማግሌ ጋመመዘኛ ኢንዱስትሪ ለኦሚያ አልላዊ መንግስት.....	39
ሠንጠረዥ 11ሀ: ጠቅላላ የሽማግሌ ጋመመዘኛ ኢንዱስትሪ በስርዓተ ካተቱ ክፍሎች ለደ.ኢ.ብ.ብ.ህ አልላዊ መንግስት.....	40
ሠንጠረዥ 11 ለ: ጠቅላላ ምግብና የምግብ ክፍሎች የሽማግሌ ጋመመዘኛ ኢንዱስትሪ ለደ.ኢ.ብ.ብ.ህ አልላዊ መንግስት.....	41
ሠንጠረዥ 12ሀ: ጠቅላላ የሽማግሌ ጋመመዘኛ ኢንዱስትሪ በስርዓተ ካተቱ ክፍሎች ለሶማሌ አልላዊ መንግስት.....	42
ሠንጠረዥ 12ለ: ጠቅላላ ምግብና የምግብ ክፍሎች የሽማግሌ ጋመመዘኛ	

ኢንዱክሽን ስርዓት ለመግለጻት..... 43

ሠንጠረዥ 13ሀ: ጠቅላላ የሽያጭ ጋራ መዘናኛ ኢንዱክሽን ስርዓት ለተካተቱ ክፍሎች ለትግራይ ክልላዊ መንግስት..... 44

ሠንጠረዥ 13ለ: ጠቅላላ ምግብና የምግብ ክፍሎች የሽያጭ ጋራ መዘናኛ ኢንዱክሽን ስርዓት ለመግለጻት..... 45

# CONTENTS

	<b>Page</b>
Introduction.....	5
Inflation Rate.....	8
Comparison of CPI Movements, Current Vs Last Year's Similar Months, at country Level.....	11
Comparison of CPI Movements, Current Vs Last Month, at country and Regional Levels.....	13

## LIST OF TABLES

Table a: Number of Markets Covered and Basket of Commodities by Region.....	3
Table 1a: General Consumer Price Index and Its Components at Country Level.....	17
Table 1b: Consumer Price Index of Total Food and Its Components at Country Level.....	18
Table 1c: Consumer Price Index of House Rent, Construction Materials, Water, Fuel and Power and Its Components at Country Level.....	19
Table 2a: Summary of General Consumer Price Indices at Country and Regional Levels.....	20
Table 2b: Summary of Consumer Price Indices of Food at Country and Regional Levels.....	22
Table 3a: General Consumer Price Index and Its	

Components for the City of Addis Ababa Administration.....	24
Table 3b: Consumer Price Index of Total Food and Its	
<i>Components for the City of Addis Ababa Administration.....</i>	<i>25</i>
Table 4a: General Consumer Price Index and Its	
Components for the Afar Regional State.....	26
Table 4b: Consumer Price Index of Total Food and Its	
Components for the Afar Regional State.....	27
Table 5a: General Consumer Price Index and Its	
Components for the Amhara Regional State.....	28
Table 5b: Consumer Price Index of Total Food and Its	
Components for the Amhara Regional State.....	29
Table 6a: General Consumer Price Index and Its	
Components for the Benishangul-Gumuz Regional State.....	30
Table 6b: Consumer Price Index of Total Food and Its	
<i>Components for the Benishangul-Gumuz Regional State.....</i>	<i>31</i>
Table 7a: General Consumer Price Index and Its	
Components for the Dire Dawa Administrative Council.....	32
Table 7b: Consumer Price Index of Total Food and Its	
<i>Components for the Dire Dawa Administrative Council.....</i>	<i>33</i>
Table 8a: General Consumer Price Index and Its	
Components for the Gambela Peoples Regional State.....	34
Table 8b: Consumer Price Index of Total Food and Its	
<i>Components for the Gambela Peoples Regional State.....</i>	<i>35</i>
Table 9a: General Consumer Price Index and Its	
Components for the Harari Peoples Regional State.....	36

Table 9b: Consumer Price Index of Total Food and Its Components for the Harari Peoples Regional State.....	37
Table 10a: General Consumer Price Index and Its Components for the Oromia Regional State.....	38
Table 10b: Consumer Price Index of Total Food and Its Components for the Oromia Regional State.....	39
Table 11a: General Consumer Price Index and Its Components for the SNNP Regional State.....	40
Table 11b: Consumer Price Index of Total Food and Its Components for the SNNP Regional State.....	41
Table 12a: General Consumer Price Index and Its Components for the Somali Regional State.....	42
Table 12b: Consumer Price Index of Total Food and Its Components for the Somali Regional State.....	43
Table 13a: General Consumer Price Index and Its Components for the Tigray Regional State.....	44
Table 13b: Consumer Price Index of Total Food and Its Components for the Tigray Regional State.....	45





በእነዚህ ከተሞች ውስጥ ተመድበው ለሚሰሩ መረጃ ሰብሳቢዎች በየበጀት ዓመቱ መጨረሻ በመረጃ ሰብሳቢ ብዙ ደውላይ ስልጠና የሚሰጥ ሲሆን ለአሰባሰቡ የሚረዱ የመስክ መገልገያ መሣሪያዎች (ካፒ፣ ሚዛን፣ ሜትር... ወዘተ) ይሰጣቸዋል። እነዚህ መሣሪያዎችን በመጠቀም በየወሩ የዋጋ መረጃዎችን ከነጋዴዎች ይሰበስባሉ። እንዳንድ ጊዜ ምስክር ዓብነት የሚያስፈልገውን ሰብሳቢ ገዛቢ ገኝና ለሥራው ተባባሪ ነገሮችን ሳይመረጃው ክርሱ ምይሰበስባል። የቸርቻ ሮዋጋ መረጃ የሚሰበስበው እንደ አውሮፓውያን ዘመን አቆጣጠር ወሩ በገባ ከ1ኛው ቀን እንስቶ እስከ 15ኛው ቀን ነው። የክልል ኢንዱስትሪ ኮሚሽን ለላት ለኢንዱስትሪ ስለተመረጡት አቃዎችና አገልግሎቶች አማካይ የቸርቻ ሮዋጋ ቸውን የጂኦሜትሪ ክሚንስትሪ ጥቅም ላይ ውሏል። የኢንዱስትሪ ሮብዮቶች በየወሩ እ.አ.አ በሁለተኛው ወር 5ኛው ቀን ለተጠቃሚዎች ይሰራጫል። በተጨማሪም ሪፖርት በማዕከላዊ ስታቲስቲክስ ኤጄንሲ ድረ-ገጽ ላይ በየወሩ ይወጣል።

የአገር አቀፍ የቸርቻ ሮዋጋ መመዘኛ ኢንዱስትሪ የሚሰላው እያንዳንዱ ክልል ለአገር አቀፍ የቤተሰብ ወጪ ያለውን የመቶ ኛድርሻ መሠረት በማድረግ ነው። በመሆኑም ለአገር አቀፍ ኢንዱስትሪ ስለት ከ94 በመቶ በላይ አስታውቋል የሚያደርጉ ክልሎች በቅደም ተከተል አሮሚያ፣ አማራ፣ የደቡብ ብሄር ብሄረሰቦችና ሕዝቦች፣ አዲስ አበባና ትግራይ ሲሆኑ የተቀሩት ክልሎች በየወሩ ለሚታየው አገር አቀፍ የቸርቻ ሮዋጋ መመዘኛ ኢንዱስትሪ የሚኖራቸው አስታውቋል ስለት በመቶ የማይበልጥ ነው።

ለቸርቻ ሮዋጋ ጥናት በአጠቃላይ 119 የገበያ ስታቲስቲክስ የተመረጡ ሲሆን በእያንዳንዱ ክልል የተመረጡ የገበያዎች ብዛት ናቸው ኢንዱስትሪዎች ወይንም ማዕከላዊ የተካተተ ተቆይታዎች/አገልግሎቶች ብዛት ከዚህ በታች ቀርቧል።

ሠንጠረዥ ሀ: በጥናቱ የተሸፈኑ ገበያዎች በኢንዱስትሪያል ባህሪ የተካተቱ የታወቁ አገልግሎቶች በዓክልል

Table A: Number of Markets Covered and Basket of Commodities by Region.

ተ/ቁ No.	ክልል	የገበያዎች ታወቁ ብዛት	በኢንዱስትሪያል ባህሪ የተካተቱ የታወቁ አገልግሎቶች Basket of Goods and Services				Region
			Markets	ታህሳስ 1993= 100	ታህሳስ1999 =100	ታህሳስ2004 =100	
1	ትግራይ	8	114	143	157	165	Tigray
2	አፋር	4	85	153	123	135	Afar
3	አማራ	20	118	144	160	132	Amhara
4	አሮሚያ	24	127	161	175	171	Oromia
5	ሶማሌ	6	85	122	120	111	Somalie
6	ቤኒሻንጉል ጉሙዝ	6	111	142	164	134	Ben- Gumuz
7	ደ.ብ.ብ.ሀ	31	130	152	168	173	SNNP
8	ጋምቤላ	3	105	103	131	107	Gambela
9	ሐረሪ	2	102	158	115	156	Harari
10	አዲስአበባ	12	175	193	165	185	Addis Ababa
11	ድሬድዋ	3	121	150	139	155	D.Dawa
		119	116	147	147	148	

ለጠቋሚአሀዙክንዋኔዋናውነገርጠቋሚአሀዙማዕቀፍተካትተውበዋናነነትየሚያገለግሉእቃዎችናአገልግሎቶች የመምረጥጉዳይነው።ጠቋሚአሀዙችየሚመሰረቱትአጠቃላይበናሙናበሚመረጡዕቃዎችላይሲሆንበጠቋሚአሀ ዙማዕቀፍውስጥመካተትየሚገባውዕቃመወስንግንሁሌምቀላልየሚባልተግባርአይደለም።የተየየየየአመራረጥዘ ዴመጠቀምቢቻልምየሚመረጡትዕቃዎችለረጅምጊዜየሚኖራቸውተፈላጊነት፣በአስተማማኝሁኔታበገበያላይየ መገኘታቸውጉዳይ፣ሌሎችንዕቃዎችየመወከልብቃትናከሌሎችምርቶችጋርያላቸውተወዳዳሪነትመሠረትያደረገ እንዲሆንይፈለጋል።በአጠቃላይየተመረጡትዕቃዎችበበቂመጠንየመገኘታቸውሁኔታ፣በየወቅቱተወዳዳሪነታቸ ውናዕቃዎችናአገልግሎቶችምድቡንየመወከላቸውብቃትንማረጋገጥያስፈልጋል።

ይህታህሳስ 2009 ዓ/ም መሠረትያደረገውየሽማቾችዋጋመመዘኛኢንዴክስአይነቶችናእያንዳንዳቸውዋናክፍልያለውየወጪድርሻበገፅ7ላ ይይታያል።ይህምንጠረኻእንደሚያሳየውየምግብየመቶኛየወጪድርሻታህሳስ2004 ዓ/ም ከነበረው 53በመቶወደ 54በመቶጨምሮአልፏል።በአንፃሩደግሞምግብነክያልሆነመመዘኛኢንዴክስታህሳስ2004 ዓ/ም ከነበረው 47በመቶየወጪድርሻወደ 46በመቶዝቅብሏል።

## **Introduction**

The Consumer Price Index (CPI) measures the average change in the price paid by consumers for a fixed market basket of goods and services. It is usually based on household expenditure weights of the goods and services in the basket and their current market prices. The twelve CPI's (i.e., the CPI's of the 11 Regions and the CPI at Country Level) presented in this report are based on the results of the Household Income, Consumption and Expenditure Survey (HICES) conducted by the Central Statistical Agency in 2015/2016 from which expenditure weights are derived for major household goods and services of that period and adjusted using the December 2016 retail prices of the goods and services as a base period.

The December 2016 based CPI updates the previous CPI series (i.e. December 2011 based) and the newly selected baskets are more diversified and the weights are more accurate. It also showed various improvements and incorporates non-food index as an independent group. The new series is constructed for country as a whole and Regional States including Dire Dawa and the Addis Ababa City Administration. However, similar indices had been utilized at Addis Ababa Level since 1963 and at Country, Urban and Rural Levels since 1995/96 and in Country and Regional level since 2000.

All the twelve general indices are divided into two major groups that is food and non-food index. The non-food index has eleven major divisions each, namely: Alcoholic Beverages; Cigarettes and Tobacco; Clothing and Footwear; House Rent, Construction Materials, Water, and Fuel and Power; Furniture, Furnishing, Household Equipment and Operation; Health; Transport; Communication; Recreation, Culture; Education; Restaurants and Hotels; and Miscellaneous Goods and Services. On the other hand, the Food Index has 10 classes. These are: Bread and Cereals; Meat; Fish and Seafood; Milk, Cheese and Eggs; Oil and Fats; Fruits; Vegetables and Pulses, Sugar, Honey and Chocolate; Food Products n.e.c., and Non-alcoholic beverages.

For the construction of the current consumer price indices, up to date data on retail prices are collected in the purposely from selected sample market places located in representative urban centers in each zone/special weredas of the country. Hence, a

total of 119 market places were selected for the retail price survey. In each market place an enumerator is assigned to undertake the data collection activities every month. The price data is collected from the 1<sup>st</sup> day through 15<sup>th</sup> days of European Calendar month under consideration. To calculate the monthly regional consumer price indices, geometric means of prices of the specific regions are used. The distribution of the market place of each region and items included in the basket of commodities are given on Table A on page 3. An important factor in constructing a Consumer Price Index is to select the representative basket of goods and services. Including all consumption items into the market basket of goods and services is both cumbersome and unnecessarily costly in term of data collection and processing. Furthermore, it doesn't make sense to include an insignificant weight into an index basket which could not move the price relative up or downwards compared to the general market trend. As a result, basket of goods and services included in the regional baskets are determined by expenditure cut-off point.

Country level CPI aggregates the regional group indices. The contributions of the six relatively big regions in terms of the magnitude of the expenditure account for more than 95 percent, namely, these regions are Oromia, Amhara, SNNP, Addis Ababa, Somali and Tigray. On the other hand, the contributions of the remaining regions to the Country Level Consumer Price Index is about five percent.

According to the weights for food and non-food groups in Table B below, the December 2016 based CPI is about 54 percent of household expenditure spent on the food component, which increased by 1 percentage points as compared to the December 2006 based CPI. On the other hand, the expenditure on non-food components decreased from 47 percent to 46 percent. The reason for  $\pm 1$  percentage point change was that the share of food increased in the two geographically and economically big regions of Oromia and Southern Peoples region.

The 2011 and 2016 CPI adapted the full version of the latest Classification of Individual Consumption by Purpose (COICOP) while the 2006 based CPI was an earlier version of COICOP. The following table shows the different COICOP versions by Comparison. In the 2006 based CPI Recreation, Entertainment and Education; and

Transport and Communication were put in the same divisions while the 2011 and 2016 based CPI separated them as standalone divisions. A new division called Restaurants and Hotels was introduced in the 2011 and 2016 based CPI by moving the food taken away from home previously categorized with Food to this new division. Non-Alcoholic beverages were taken out of the Non-Food division and moved to the Food division.

**Table B: Major groups in the 2006, 2011 and 2016 based CPI and their weights  
At Country Level**

Comparison of COICOP Divisions	December 2006=100	December 2011=100	December 2016=100
<b>1. FOOD AND NON-ALCOHOLIC BEVERAGES</b>	<b>57%</b>	<b>53%</b>	<b>54%</b>
<b>Non - FOOD</b>	<b>43%</b>	<b>47%</b>	<b>46%</b>
<b>2. ALCOHOLIC BEVERAGES AND TOBACCO, NARCOTICS</b>	2.5	4.85	4.9
<b>3. CLOTHING AND FOOTWEAR</b>	8.32	6.62	5.7
<b>4. HOUSING, WATER, ELECTRICITY, GAS AND OTHER FUELS</b>	20.56	16.34	16.8
<b>5.FURNISHINGS, HOUSEHOLD EQUIPMENT AND ROUTINE MAINTENANCE OF THE HOUSE</b>	3.75	5.41	4.7
<b>6. HEALTH</b>	1.11	1.08	1.5
<b>7. TRANSPORT</b>	2.5	2.80	2.5
<b>8. COMMUNICATION</b>	-	1.08	2.0
<b>9. RECREATION AND CULTURE</b>	1.1	0.60	0.4
<b>10. EDUCATION</b>	-	0.45	0.2
<b>11. RESTAURANTS AND HOTELS</b>	-	5.46	5.3
<b>12. MISCELLANEOUS GOODS AND SERVICES</b>	3.2	2.56	2.5
<b>Total</b>	100	100	100



**የታህሳስወር2013ዓ.ምየዋጋግሽበትሁኔታ**

**ሀ) የ12 ወራት-ተንከባላይአማካይአገራዊየዋጋግሽበት**

ከሠንጠረዥ"ሐ" መረዳት-አንደሚቻለው-በታህሳስወር2013 ዓ/ም የተመዘገበው የ12 ወራት-ተንከባላይአማካይአገራዊአጠቃላይየዋጋግሽበት-ካለፈው-ዓመት-ተመሳሳይወቅት-ጋርሲነፃፀር በ20.4በመቶጭማሪአሳይቷል። በታህሳስወር2013ዓ.ምአገራዊ የ12 ወራት-ተንከባላይአማካይየምግብየዋጋግሽበት በ23.1በመቶዕድገትአሳይቷል። የ12 ወራት-ተንከባላይአማካይአገራዊምግብነክያልሆኑ-የዋጋግሽበትም በ17.0በመቶጭማሪአሳይቷል። የ12 ወራት-ተንከባላይአማካይየዋጋግሽበት-ረዘም ያለጊዜየዋጋግሽበት-ሁኔታየሚያሳይነው።

**ለ) የዋጋግሽበት-ሁኔታካለፈው-ዓመት-ተመሳሳይወር-ጋርበማነፃፀር**

የዋጋግሽበት-ሁኔታካለፈው-ዓመት-ተመሳሳይወር-ጋርበማነፃፀርየሚገኘው-ውጤት-ወቅታዊየዋጋግሽበት-ሁኔታንይገልጻል።ሠንጠረዥ/መ/የሚያሳየው-የዋጋግሽበት-ሁኔታካለፈው-ዓመት-ተመሳሳይወር-ጋርበማነፃፀርነው።

ከሠንጠረዥ"መ" መረዳት-አንደሚቻለው-የታህሳስወር2013 ዓ/ም አጠቃላይየዋጋግሽበት-ካለፈው-ዓመት-ታህሳስወር2012ዓ.ምጋርሲነፃፀር በ18.2በመቶከፍብሏል። የምግብየዋጋግሽበት-የታህሳስወር2013ዓ.ምካለፈው-ዓመት-ታህሳስወር2012ዓ.ምጋርሲነፃፀር በ21.3በመቶጭማሪአሳይቷል።

በያዘነው-ወርጤፍ፣ ስንዴ፣ ገብስ፣ በቆሎናማሽላየዋጋግሽበት-ቅናሽያሳዩሲሆንለምግብየዋጋግሽበት-መረጋጋት-ከፍተኛ-አስተዋጽኦአላቸው።በተጨማሪም-አትክልት-ና-አንዳንድ-የጥራጥራ-ዓይነቶች-መጠነኛ-የዋጋግሽበት-አስመግቦታ። በሌላበኩልስኳር፣ የምግብዘይት፣ ድንችእናቡናዎጭማሪበዚህም-ወርበመቀጠላቸው-ለዋጋግሽበት-ምጣኔ-መጨመር-አስተዋጽኦአድርገዋል። ያለፈው-ዓመት-ተመሳሳይወር-ጋርከአሁኑ-ዓመት-ተመሳሳይወር-ጋርበንጽጽር-ዝቅተኛ-ስለነበር-የዋጋግሽበት-ቁጥጥር-ምክፍብሏል።

በሌላበኩልምግብነክያልሆኑ-የኢንዱስትሪ-ክፍሎች-የዋጋግሽበት-የታህሳስወር2013ዓ.ምካለፈው-ዓመት-ታህሳስወር2012ዓ/ም ጋርሲነፃፀርም የ14.3በመቶጭማሪአሳይቷል።

ከምግብነክያልሆኑ-የኢንዱስትሪ-ክፍሎች-የዋጋግሽበት-ካለፈው-ተመሳሳይወቅት-ጋርሲነፃፀር-ከፍተኛ-ንዲል-ካደረጉት-ዋና-ምክንያቶች-ውስጥ-በተለይም-በአልኮልና-ትምባሆት-ምግብ፣ አነቃቂዎች

(ጫት)፣ የቤት-አንክብካቤናኢነርጅ(ማገደናከሰል)፣ የቤት-መስሪያ-አቃዎች፣ ህክምና-እናጌጣጌጥ ላይ-የታየው-የዋጋግሽበት-ጭማሪነው። (ወርቅ)

**ሐ) የዋጋግሽበት-ሁኔታ-የአሁኑ-ንወርካለፈው-ወር-ጋርበማነፃፀር**

የታህሳስወር2013 ዓ/ም አጠቃላይየዋጋግሽበት-ካለፈው-ወር-ጋርሲነፃፀር በ0.1በመቶቅናሽአሳይቷል። ወርሃዊየዋጋግሽበት-ምጣኔው-በመጨረሻዎቹ-ሁለት-ተከታታይ-ወራት-መካከል-ያለው-ንደ-የዋጋግሽበት-ጥለመለካት-ያገለግላል። ወርሃዊየዋጋግሽበት-ምጣኔው-የወቅቱን-ሁኔታ-የሚያሳይ-በመሆኑ-የአጭር-ጊዜ-ክስተቱ-ንብቻ-ያመለክታል።



### **December 2020 Country Level Inflation Rate**

#### **12 months Moving Average Inflation at Country Level**

As it is indicated in Table 'C' below the country level overall inflation rate (annual change based on 12 months Moving Average) rose by 20.4 percent in December 2020 as compared to the one observed in a similar period a year ago. The country level food inflation increased by 23.1 percent as compared to the one observed a year ago. The country level Non-food inflation rate increased by 17.0 percent in December 2020 as compared to the one observed in December 2019. The 12 months moving average inflation rate shows the longer term inflationary situation.

#### **a) Inflation based on comparison of Current vs. Last year's similar month at Country Level (Year-on-Year Change)**

Inflation based on comparison of Current vs. Last year's similar month shows the current inflation situation. Table (D) shows Inflation rate based on last year's similar month comparison. As can be seen from the table the December 2020 General year-on-year inflation has increased by 18.2 percent as compared to the one observed in December 2019. The year-on-year Food inflation has increased by 21.3 percent in December 2020 as compared to the one observed in December 2019. Teff, Wheat, Barely, Maize and Sorghum prices showed a decline in the current month which has great contribution for stabilization of food prices. In addition, Vegetables and some Pulses types registered a decrease in their price in the current month. On the other hand, the continued rise in the prices of Sugar, edible Oil, Potatoes, and coffee during the current month has contributed to an increase in the rate of inflation. The annual inflation rate showed an increase in the current month since prices were relatively lower in the same month last year. The Non-Food inflation also increased by 14.3 percent in December 2020 as compared to the one observed in December 2019. The rise in Non-food Inflation is mainly due to rise in the prices of Alcohol and Tobacco, Stimulants (Chat), Housing Repair and Maintenance, and Energy (Firewood and Charcoal), Medical care and Jewelry (Gold).

#### **Inflation based on comparison of Current vs. Last month at Country Level (month-on-month)**

*The month-on-month General CPI for December 2020 has showed a decline of 0.1 Percent as compared to the preceding month. The monthly inflation rate measures the price change between the two latest months. Although up to date, it can be affected by seasonal and other short term effects.*

**ሠንጠረዥ ሐ:በአገርአቀፍደረጃ የ12 ወራትተንከባላይአማካይየዋጋግሽበትሁኔታ**

**Table C: The Country Level 12 months Moving Average Inflation Rate**

ወርናበጀትዓመት	የዋጋግሽበትሁኔታ			Budget Year and months
	አጠቃላይየዋጋግሽበት	የምግብዋጋግሽበት	ምግብነክያልሆኑየዋጋግሽበት	
	General Inflation	Food Inflation	Non-Food Inflation	
ሐምሌ2009-ሰኔ 2010 ዓመታዊአማካይ	10.6	11.0	11.0	July 2017 – June 2018 (Annual Average)
ሐምሌ 2010-ሰኔ 2011 (ዓመታዊአማካይ)	13.7	12.8	14.9	July 2018 – June 2019 (Annual Average)
ሐምሌ 2011 - ሰኔ 2012 (ዓመታዊአማካይ)	16.2	19.2	12.8	July 2019 – June 2020 (Annual Average)
መስከረም 2012	13.6	15.6	11.2	September 2019
ጥቅምት 2012	14.1	16.8	11.0	October 2019
ህዳር 2012	15.1	18.0	11.7	November 2019
ታህሳስ 2012	15.8	18.9	12.2	December 2019
ጥር 2012	16.4	19.8	12.6	January 2020
የካቲት 2012	17.3	20.9	13.1	February 2020
መጋቢት 2012	18.3	22.2	13.7	March 2020
ሚያዚያ 2012	19.1	23.1	14.4	April 2020
ግንቦት 2012	19.4	23.1	15.0	May 2020
ሰኔ 2012	19.9	23.3	15.9	June 2020
ሐምሌ 2012	20.5	23.7	16.6	July 2020
ነሐሴ 2012	20.6	23.6	17.0	August 2020
መስከረም 2013	20.6	23.4	17.2	September 2020
ጥቅምት 2013	20.6	23.4	17.3	October 2020

ህዳር 2013	20.5	23.2	17.1	November 2020
ታህሳስ 2013	20.4	23.1	17.0	December 2020

**ሠንጠረዥ መ፡የዘንድሮውናየአምናውተመሳሳይወሮችየሽማቾችዋጋኢንዴክስለውጥንጽጽርበአገርአቀፍደረጃ**

**Table D: Summary of Comparison of CPI Movements, Current vs. Last year's Similar Months at Country Level**

ወርናበጀትዓመት	የዋጋገሽበትሁኔታ			Budget Year and months
	አጠቃላይየዋጋገሽበት	የምግብዋጋገሽበት	ምግብነክያልሆኑየዋጋገሽበት	
	General Inflation	Food Inflation	Non-Food Inflation	
ሐምሌ 2009-ሰኔ 2010 (ዓመታዊአማካይ)	14.4	13.5	15.8	July 2017 – June 2018 (Annual Average)
ሐምሌ 2010-ሰኔ 2011 (ዓመታዊአማካይ)	12.6	13.1	12.0	July 2018 – June 2019 (Annual Average)
ሐምሌ 2011 - ሰኔ 2012 (ዓመታዊአማካይ)	19.9	23.3	15.8	July 2019 – June 2020 (Annual Average)
ህዳር 2012	20.8	24.5	16.4	November 2019
ታህሳስ 2012	19.5	22.7	15.8	December 2019
ጥር 2012	18.7	22.0	15.0	January 2020
የካቲት 2012	21.8	25.1	18.0	February 2020
መጋቢት 2012	22.6	26.9	17.6	March 2020
ሚያዝያ 2012	22.9	25.9	19.2	April 2020
ግንቦት 2012	19.8	20.3	19.1	May 2020
ሰኔ 2012	21.6	23.1	19.7	June 2020

ሐምሌ 2012	22.3	24.9	18.9	July 2020
ነሐሴ 2012	20.0	22.0	17.5	August 2020
መስከረም 2013	18.7	21.2	15.5	September 2020
ጥቅምት 2013	19.3	23.2	14.4	October 2020
ህዳር 2013	19.0	22.1	15.1	November 2020
ታህሳስ 2013	18.2	21.3	14.3	December 2020

ሠንጠረዥ ሠ:የአሁኑናያለፈው ወር የሽያጭ ስርዓት ለጊዜያዊ ስለውጥ ገንጽጽ ስርዓት አቀፍ ደረጃ

**Table E: Summary of Comparison of CPI Movements, Current vs. Last month at Country Level**

ወርናበጀት ዓመት	የዋጋ ግንባታ ሁኔታ			Budget Year and months
	አጠቃላይ የዋጋ ግንባታ	የምግብ የዋጋ ግንባታ	ምግብ ከገደብ ለሆኑ የዋጋ ግንባታ	
	General Inflation	Food Inflation	Non-Food Inflation	
ሐምሌ 2009-ሰኔ 2010 (ዓመታዊ አማካኝ)	1.3	1.1	1.5	July 2017 – June 2018 (Annual Average)
ሐምሌ 2010-ሰኔ 2011 (ዓመታዊ አማካኝ)	1.2	1.5	0.8	July 2018 – June 2019 (Annual Average)
ሐምሌ 2011-ሰኔ 2012 (ዓመታዊ አማካኝ)	1.7	1.8	1.5	July 2019 – June 2020 (Annual Average)
ጥቅምት 2012	-0.2	-0.7	0.4	October 2019
ህዳር 2012	0.6	0.4	0.9	November 2019
ታህሳስ 2012	0.6	-0.8	2.3	December 2019
ጥር 2012	0.7	0.5	1.0	January 2020
የካቲት 2012	3.0	3.7	2.1	February 2020
መጋቢት 2012	3.0	3.6	2.2	March 2020
ሚያዝያ 2012	2.1	2.8	1.1	April 2020
ግንቦት 2012	1.7	1.4	2.0	May 2020
ሰኔ 2012	2.9	4.1	1.4	June 2020
ሐምሌ 2012	2.0	3.1	0.5	July 2020
ነሐሴ 2013	0.5	0.8	0.0	August 2020
መስከረም 2013	0.6	0.6	0.5	September 2020
ጥቅምት 2013	0.4	0.9	-0.4	October 2020
ህዳር 2013	0.4	-0.4	1.5	November 2020
ታህሳስ 2013	-0.1	-1.4	1.6	December 2020



*Non-Alcoholic beverages and Coffee by 31.50 percent).*



**የዘንድሮውና የአምናው ተመሳሳይ ወሮች የችርቻሮ ዋጋ መመዘኛ ጠቋሚ አሀዝን ፅሁፍ በአገር አቀፍና በክልሎች ደረጃ**

*Comparison of CPI Movements, Current vs Last year's Similar Months at Regional Levels*

**አሀዝን ጠቋሚ** 2(ሀ)  
**መረዳት እንደሚቻለው የታህሳስ ወር** 2013 9/9ም  
**የአገር አቀፍ ጠቅላላ የችርቻሮ ዋጋ መመዘኛ ኢንዱክስ**  
**የታህሳስ ወር** 2012 9/9ም  
**ጠቅላላ ኢንዱክስ ጋር ሲነፃፀር**  
 በ18.2% ከመቼት ጭማሪ አሳይቷል። ለዚህ ጭማሪ አስተዋጽኦ ደረጃ ጉዳት አዲስ አበባ  
 በ17.1% ከመቼት፣ አፋር 14.4% ከመቼት፣ አማራ 14.7% ከመቼት፣  
 ቤኒሻንጉል ጉሙዝ  
 በ26.9% ከመቼት፣ ድሬደዋ 17.0% ከመቼት፣ ጋምቤላ 22.0% ከ  
 መቼት፣ ሐረር 24.5% ከመቼት፣ ኦሮሚያ  
 በ17.8% ከመቼት፣ ደቡብ ብሄሮች ብሄረሰቦችና ሕዝቦች  
 3.8% ከመቼት፣ ሶማሌ በ9.7% ከመቼት እና ጉግራይ  
 በ30.8% ከመቼት ጭማሪ በማሳየታቸው ነው።

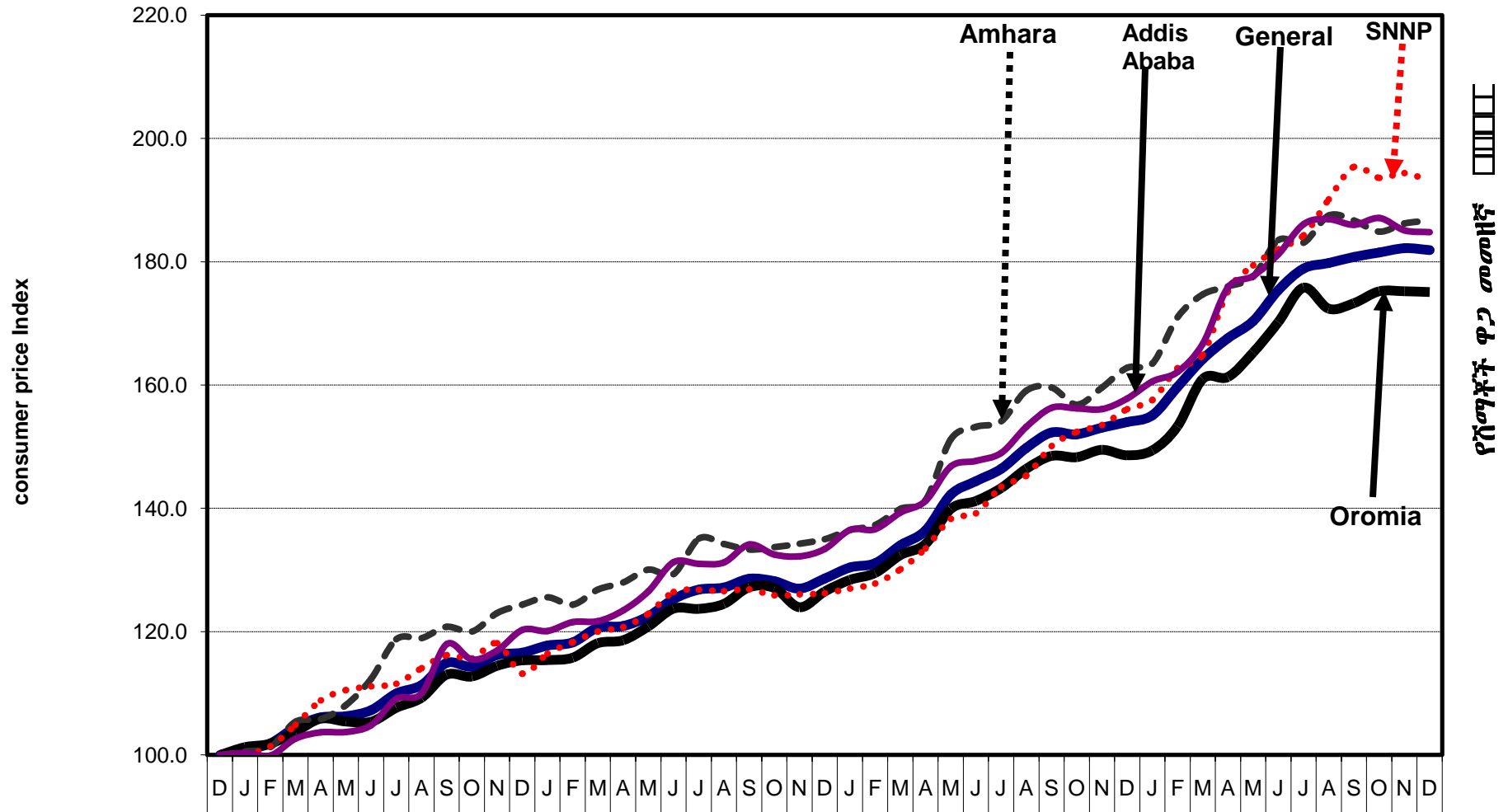
Table 2(a) also displays that the December 2020 Country level General Consumer Price Index has increased by 18.2 percent as compared to December 2019. This increase was attributed to the rise in the indices of its constituent regions; namely: Addis Ababa 18.2 percent, Afar by 14.4 percent, Amhara 14.7 percent, Benishangul Gumuz by 26.9 percent, Dire Dawa 17.0 percent, Gambella 22.0 percent, Harari by 24.5 percent, Oromia 17.8 percent, SNNP by 23.8 percent, Somali by 9.7 percent and Tigray by 30.8 percent.

**ሀዝን ጠቋሚ** 2(ለ) እንደሚያሳየው ለምግብ ኢንዱክስ  
 በ21.3% ከመቼት መጨመር ምክንያት ሆኑት አዲስ አበባ  
 በ20.6% ከመቼት፣ አፋር በ17.3% ከመቼት፣ አማራ  
 በ18.5% ከመቼት፣ ቤኒሻንጉል ጉሙዝ  
 በ29.5% ከመቼት፣ ድሬደዋ በ24.2% ከመቼት፣ ጋምቤላ  
 በ26.7% ከመቼት፣ ሐረር  
 በ20.1% ከመቼት፣ ኦሮሚያ 22.3% ከመቼት፣ ደቡብ ብሄሮች  
 ብሄረሰቦችና ሕዝቦች  
 በ27.5% ከመቼት፣ ሶማሌ 5.1% ከመቼት እና ጉግራይ  
 በ38.4% ከመቼት በምግብ ኢንዱክስ ስላይ ጭማሪ አሳይተዋል።

Table 2(b) reveals the rise in the food index by 21.3 percent is due to the rise in the indices of the regions namely: Addis Ababa by 20.6 percent, Afar by 17.3 percent, Amhara 18.5 percent, Benishangul Gumuz by 29.5 percent, Dire Dawa 24.2 percent, Gambella 26.7 percent, Harari 20.1 percent, Oromia 22.3 percent, SNNP 27.5 percent, Somali 5.1 percent and Tigray 38.4 percent.

# General CPI for Country Level and Major Regions

የሽያጭ ዋጋ ኢንዱክስ ለአገር አቀፍና ለዋና ዋና ክልሎች



ሠንጠረዥ 2ሀ:- ጠቅላላ የሽማግሌት ዋጋ መመዘኛ ኢንዱስትሪ ማጠቃለያ በአገር አቀፍ እና በክልሎች ደረጃ  
 ታህሳስ 2009 = 100

Table 2a: Summary of General Consumer Price Indices at Country and Regional Levels  
 December 2016=100

ወርና በጀት አመት	Reporting Levels												Month and Fiscal Year
	Eth.	A.A.	Afar	Amhara	B.Gumu	D.Dawa	Gambela	Harari	Oromia	SNNP	Somalia	Tigray	
ታህሳስ 2009	100	100	100	100	100	100	100	100	100	100	100	100	December 2016
ሐምሌ 2009 - ሰኔ 2010	117.3	119.5	113.7	124.1	116.1	110.8	110.2	109.0	115.4	117.8	110.4	114.0	July 2017 - June 2018
ሐምሌ 2010 - ሰኔ 2011	132.0	137.0	124.4	138.9	133.5	125.0	123.2	121.4	129.9	129.5	124.1	136.5	July 2018 - June 2019
ሐምሌ 2011 - ሰኔ 2012	158.3	162.7	149.5	166.5	165.7	150.7	148.4	150.5	153.7	160.3	149.5	169.6	July 2019 - June 2020
2011													2018/2019
ሐምሌ 2010	126.7	131.0	120.4	135.0	123.6	124.3	124.6	115.6	123.7	126.8	119.1	126.1	July 2018
ነሐሴ 2010	127.0	131.2	120.2	134.0	126.3	124.5	122.0	114.9	124.5	126.5	120.8	126.3	August "
መስከረም 2011	128.4	134.1	121.6	133.2	127.4	122.4	120.7	117.6	127.2	126.9	122.0	130.9	September "
ጥቅምት 2011	128.1	132.5	122.3	133.9	128.7	121.3	120.1	116.9	127.1	125.9	119.1	132.7	October "
ሀዳር 2011	126.7	132.2	119.5	133.5	127.8	117.9	118.0	117.1	123.9	126.0	119.5	133.8	November "
ታህሳስ 2011	128.8	134.2	121.5	136.1	133.6	120.9	120.6	118.3	126.5	126.2	121.1	136.5	December "
ጥር 2011	130.7	136.5	124.1	137.8	134.1	120.6	119.4	121.8	128.4	127.0	125.8	136.0	January 2019
የካቲት 2011	131.1	136.6	124.3	137.4	134.9	124.0	120.9	121.6	129.5	127.8	120.9	135.4	February "
መጋቢት 2011	134.0	139.3	124.3	140.0	135.3	125.6	124.5	123.6	132.4	130.1	123.2	140.8	March "
ሚያዝያ 2011	136.4	141.2	129.9	141.4	139.5	128.7	124.4	124.2	134.2	133.5	126.7	144.8	April "
ግንቦት 2011	142.3	146.8	130.9	151.3	141.8	134.9	129.5	130.5	139.9	138.3	132.4	144.2	May "
ሰኔ 2011	144.3	147.7	134.3	153.2	148.9	135.3	133.2	134.9	141.2	139.2	138.5	150.1	June "
2012													2019/2020
ሐምሌ 2011	146.3	149.0	137.4	154.1	153.5	136.9	136.7	135.7	143.3	143.5	142.0	153.2	July 2019
ነሐሴ 2011	149.8	153.2	139.5	159.1	155.7	140.7	138.4	142.2	146.4	145.3	143.4	158.3	August "
መስከረም 2012	152.3	156.3	144.5	159.6	160.4	143.3	141.6	149.1	148.5	150.1	150.5	161.7	September "
ጥቅምት 2012	152.1	156.3	148.9	156.8	157.7	149.2	139.4	147.0	148.3	152.4	150.4	164.8	October "
ሀዳር 2012	153.1	156.1	146.4	159.6	159.6	146.3	138.0	143.7	149.5	153.5	151.4	164.1	November "
ታህሳስ 2012	154.0	157.8	148.0	162.8	159.3	147.4	141.9	147.0	148.6	156.1	149.3	163.4	December "
ጥር 2012	155.1	160.6	149.3	163.5	160.8	148.2	143.4	149.5	149.4	157.6	147.4	166.9	January 2020
የካቲት 2012	159.5	162.1	151.6	171.0	167.5	150.6	149.7	151.1	153.3	162.7	147.5	170.7	February "
መጋቢት 2012	164.2	166.7	152.3	174.7	173.4	153.1	153.9	154.8	161.0	164.9	151.0	173.3	March "
ሚያዝያ 2012	167.6	175.8	153.8	176.0	174.1	159.7	167.0	156.9	161.3	175.2	154.8	178.9	April "
ግንቦት 2012	170.5	177.7	156.7	177.6	176.8	163.4	160.6	159.5	165.0	180.5	152.1	185.9	May "
ሰኔ 2012	175.4	181.2	165.5	183.5	188.9	170.2	169.6	169.7	170.2	182.0	154.4	194.2	June "
2013													2020/2021
ሐምሌ 2012	179.0	186.1	172.4	183.1	200.4	188.4	174.1	177.6	175.8	184.3	158.7	198.9	July 2020
ነሐሴ 2012	179.8	186.9	170.1	187.5	200.4	181.4	173.0	179.6	172.4	190.1	157.0	200.1	August "
መስከረም 2013	180.8	186.0	170.0	186.7	202.5	175.6	174.0	178.1	173.3	195.4	155.6	202.1	September "
ጥቅምት 2013	181.5	187.1	169.8	184.9	202.4	173.2	172.7	177.3	175.2	193.6	157.2	213.8	October "
ሀዳር 2013	182.2	185.1	169.3	186.2	205.4	171.9	175.1	178.9	175.2	194.4	162.9	213.8	November "
ታህሳስ 2013	181.9	184.8	169.3	186.7	202.2	172.4	173.1	182.9	175.1	193.1	163.8	213.8	December "

18.2 17.1 14.4 14.7 26.9 17.0 22.0 24.5 17.8 23.8 9.7 30.8

ሠንጠረዥ 2ላ፡- የምግብና አልኮል ያልሆኑ መጠጦች ዋጋ መመዘኛ ኢንዱስትሪ ማጠቃለያ በአገር አቀፍ እና በክልሎች ደረጃ

ታህሳስ 2009 = 100

Table 2b: Summary of Consumer Price Indices of Food and Non-Alcoholic Beverages at Country and Regional Levels

December 2016 = 100

ወርና በጀት አመት	Reporting Levels												Month and Fiscal Year
	Eth.	A.A.	Afar	Amhara	B.Gum.	D.Dawa	Gambela	Harari	Oromia	SNNP	Somalia	Tigray	
ታህሳስ 2009	100.0	100.0	100.0	100.0	100.0	100.0	100.0	100.0	100.0	100.0	100.0	100.0	December 2016
ሐምሌ 2009 - ሰኔ 2010	118.0	112.6	114.7	122.0	120.1	113.5	112.9	111.9	116.5	120.5	113.7	118.0	July 2017 - June 2018
ሐምሌ 2010 - ሰኔ 2011	133.5	129.4	127.7	138.2	133.8	136.7	129.8	128.0	129.8	132.1	132.5	145.4	July 2018 - June 2019
ሐምሌ 2011 - ሰኔ 2012	164.7	163.0	161.2	171.0	173.8	171.8	159.4	161.5	160.8	164.5	159.4	183.4	July 2019 - June 2020
2011													2018/2019
ሐምሌ 2010	127.1	123.8	122.1	134.7	127.8	136.6	129.0	124.9	122.1	129.3	126.1	133.9	July 2018
ነሐሴ 2010	128.2	123.7	123.3	134.9	128.2	132.6	127.5	123.9	123.5	129.6	130.0	131.6	August "
መስከረም 2011	129.4	128.1	127.1	132.2	131.5	132.3	127.0	121.6	125.6	129.6	130.8	141.6	September "
ጥቅምት 2011	128.6	122.7	125.8	132.7	128.9	129.6	124.4	122.9	125.1	128.6	128.5	144.4	October "
ሀዳር 2011	127.8	122.7	122.8	132.4	128.0	129.2	125.6	123.8	123.6	128.8	128.3	145.4	November "
ታህሳስ 2011	128.6	125.8	124.5	133.4	133.6	128.6	124.9	124.2	124.7	128.2	128.9	144.4	December "
ጥር 2011	130.1	126.4	126.8	134.8	134.6	131.7	125.2	126.9	126.3	128.0	131.3	143.9	January 2019
የካቲት 2011	131.5	126.9	124.7	135.9	132.8	133.5	128.7	124.5	127.6	128.5	131.3	143.6	February "
መጋቢት 2011	134.3	129.1	126.7	139.2	131.0	136.1	133.3	126.3	130.0	130.5	133.2	149.0	March "
ሚያዝያ 2011	139.2	132.8	128.1	141.2	135.3	141.9	130.2	131.9	136.8	135.8	135.3	151.2	April "
ግንቦት 2011	147.6	144.5	138.1	151.4	142.0	154.5	140.2	140.8	145.3	143.4	141.4	157.0	May "
ሰኔ 2011	150.2	146.8	142.3	155.3	151.3	154.3	141.4	143.8	147.1	145.4	145.2	159.4	June "
2012													2019/2020
ሐምሌ 2011	152.6	149.1	146.4	158.1	160.2	157.0	148.7	144.6	148.6	150.2	149.9	166.4	July 2019
ነሐሴ 2011	157.6	157.4	151.9	163.4	163.1	162.5	150.1	155.2	153.2	152.2	153.5	172.8	August "
መስከረም 2012	159.5	160.1	156.9	162.7	170.2	168.3	148.8	161.8	154.9	157.1	161.8	175.5	September "
ጥቅምት 2012	158.4	157.9	161.0	157.3	165.7	177.6	149.7	162.6	155.0	160.2	161.1	177.5	October "
ሀዳር 2011	159.1	156.3	160.5	161.3	169.5	168.7	144.6	159.5	156.0	160.0	164.0	174.9	November "
ታህሳስ 2012	157.9	157.1	157.8	164.3	164.9	163.3	148.6	157.8	153.3	156.5	161.9	172.9	December "
ጥር 2012	158.7	158.5	155.7	166.4	166.2	161.3	152.5	158.5	153.6	157.4	160.5	175.5	January 2020
የካቲት 2012	164.5	160.6	157.4	174.3	173.9	166.6	158.6	159.3	160.7	162.5	156.3	181.7	February "
መጋቢት 2012	170.4	163.5	162.9	181.9	178.9	173.9	166.7	159.9	167.9	168.4	159.4	187.0	March "
ሚያዝያ 2012	175.2	172.0	169.1	184.2	182.0	178.5	183.4	166.1	171.3	179.3	163.1	192.4	April "
ግንቦት 2012	177.6	176.0	175.4	186.0	185.6	186.3	175.0	170.6	173.6	183.1	161.5	205.1	May "
ሰኔ 2012	184.8	187.7	179.4	192.2	205.2	197.4	185.6	182.3	181.5	186.9	160.0	218.9	June "
2013													2020/2021
ሐምሌ 2012	190.7	196.8	177.4	199.0	220.6	225.1	186.7	190.3	188.8	191.2	162.9	226.3	July 2020
ነሐሴ 2012	192.2	197.5	182.2	201.2	225.8	213.2	195.5	190.7	186.8	195.9	169.2	225.0	August "
መስከረም 2013	193.4	198.8	179.9	199.8	221.4	211.3	194.1	188.2	187.3	201.3	166.8	233.2	September "
ጥቅምት 2013	195.1	199.2	187.9	200.4	219.0	207.6	189.1	195.0	190.3	204.2	165.9	239.2	October "
ሀዳር 2013	194.3	194.5	189.6	198.6	228.9	201.8	194.3	192.7	190.0	203.2	166.5	239.2	November "
ታህሳስ 2013	191.5	189.5	185.0	194.7	213.6	202.8	188.4	189.5	187.5	199.4	170.1	239.2	December "

21.3 20.6 17.3 18.5 29.5 24.2 26.7 20.1 22.3 27.5 5.1 38.4