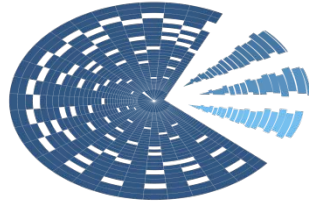


በኢትዮጵያ ፌዴራላዊ ዲሞክራሲያዊ ሪፐብሊክ

በብሔራዊ ልማትና ፕላን ኮሚሽን

የማዕከላዊ ስታቲስቲክስ ኤጀንሲ



**CENTRAL  
STATISTICS  
AGENCY**  
ኢትዮጵያ

THE FEDERAL DEMOCRATIC REPUBLIC OF ETHIOPIA  
NATIONAL DEVELOPMENT AND PLANNING COMMISSION

CENTRAL STATISTICS AGENCY

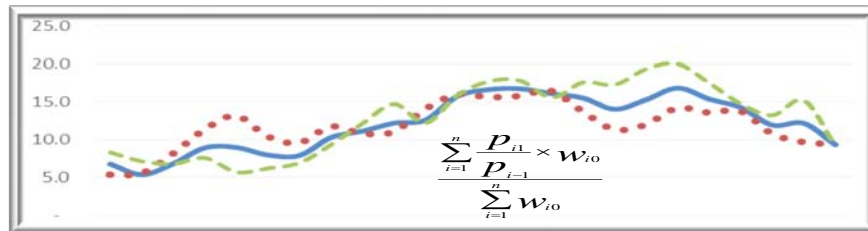
የአገር አቀፍና የክልሎች የሽማግቾች ዋጋ መመዘኛ ኢንዱክሶች

□ ሚያዝያ ወር 2013 ዓ.ም.

[ታህሳስ 2009= 100]

መረጃ ቁጥር 29

**COUNTRY AND REGIONAL LEVEL CONSUMER PRICE INDICES (CPI)**



[December 2016=100]

For the month of April 2021

Information No. 29

አዲስ አበባ

ሚያዝያ 26 ቀን 2013 ዓ.ም.

ADDIS ABABA

04 May 2021

Tel: 251-11-1 553011

Fax: 251-11-1550334.

Web-site: <https://www.statsethiopia.gov.et>

መግቢያ ..... 1

የዋጋ ዋጋ ግሽበት ሁኔታ ..... 8

ሠንጠረዥ ሐ: በአገር አቀፍ ደረጃ የ12 ወር ተንከባላይ አማካይ የዋጋ ግሽበት ሁኔታ ..10

ሠንጠረዥ መ: የዘንድሮውና የአምናው ተመሳሳይ ወሮች የሽማግሌት ዋጋ መመዘኛ  
 ኢንዱስትሪ ለውጥ ንዕስት በአገር አቀፍ ደረጃ ማጠቃለያ ..... 11

ሠንጠረዥ ሠ: የአሁኑና ያለፈው ወር የሽማግሌት ዋጋ መመዘኛ ኢንዱስትሪ ንጽጽር  
 በአገር አቀፍ ደረጃ ማጠቃለያ ..... 13

**የሠንጠረዦች ዝርዝር**

ሠንጠረዥ ሀ: በጥናቱ የተሸፈኑ ገበያዎችና በኢንዱስትሪ ማዕቀፍ የተካተቱ ዕቃዎችና  
 በዕቃዎች/አገልግሎቶች ብዛት በክልል ..... 3

ሠንጠረዥ 1ሀ: ጠቅላላ የሽማግሌት ዋጋ መመዘኛ ኢንዱስትሪና በስሩ የተካተቱ ክፍሎች  
 በአገር አቀፍ ደረጃ ..... 17

ሠንጠረዥ 1ለ: ጠቅላላ ምግብና የምግብ ክፍሎች የሽማግሌት ዋጋ መመዘኛ  
 ኢንዱስትሪ በአገር አቀፍ ደረጃ .....18

ሠንጠረዥ 1ሐ: አገር አቀፍ የቤት ኪራይ፣ የቤት መስሪያ እቃዎች፣ውሃና ኢነርጂ  
 የሽማግሌት ዋጋ መመዘኛ ኢንዱስትሪ ..... 19

ሠንጠረዥ 2ሀ: ጠቅላላ የሽማግሌት ዋጋ መመዘኛ ኢንዱስትሪ  
 በአገር አቀፍና በክልሎች ደረጃ..... 20

ሠንጠረዥ 2ለ: የምግብ ዋጋ መመዘኛ ኢንዱስትሪ ማጠቃለያ በአገር አቀፍ  
 እና በክልሎች ደረጃ .....22

ሠንጠረዥ 3ሀ: ጠቅላላ የሽማግሌት ዋጋ መመዘኛ ኢንዱስትሪና በስሩ የተካተቱ  
 ክፍሎች ለአዲስ አበባ ከተማ መስተዳደር.....24

ሠንጠረዥ 3ለ: ጠቅላላ ምግብና የምግብ ክፍሎች የሽማግሌት ዋጋ መመዘኛ  
 ኢንዱስትሪ ለአዲስ አበባ ከተማ መስተዳደር..... 25

ሠንጠረዥ 4ሀ: ጠቅላላ የሽማግሌት ዋጋ መመዘኛ ኢንዱስትሪና በስሩ የተካተቱ  
 ክፍሎች ለአፋር ክልላዊ መንግስት..... 26

ሠንጠረዥ 4ለ: ጠቅላላ ምግብና የምግብ ክፍሎች የሽማግሌት ዋጋ መመዘኛ  
 ኢንዱስትሪ ለአፋር ክልላዊ መንግስት..... 27

ሠንጠረዥ 5ሀ: ጠቅላላ የሽማግሌት ዋጋ መመዘኛ ኢንዱስትሪና በስሩ የተካተቱ

ክፍሎች አማራ ክልላዊ መንግስት.....	28
ሠንጠረዥ 5ለ: ጠቅላላ ምግብና የምግብ ክፍሎች የሽማግሌት ዋጋ መመዘኛ	
ኢንዱስትሪ ለአማራ ክልላዊ መንግስት.....	29
ሠንጠረዥ 6ሀ: ጠቅላላ የሽማግሌት ዋጋ መመዘኛ ኢንዱስትሪ በስሩ የተካተቱ	
ክፍሎች ለቤንሻንጉል-ጉሙዝ ክልላዊ መንግስት.....	30
ሠንጠረዥ 6ለ: ጠቅላላ ምግብና የምግብ ክፍሎች የሽማግሌት ዋጋ መመዘኛ	
ለቤንሻንጉል-ጉሙዝ ክልላዊ መንግስት .....	31
ሠንጠረዥ7ሀ: ጠቅላላ የሽማግሌት ዋጋ መመዘኛ ኢንዱስትሪ በስሩ የተካተቱ	
ክፍሎች ለድሬድዋ አስተዳደር ካውንስል .....	32
ሠንጠረዥ 7ለ: ጠቅላላ ምግብና የምግብ ክፍሎች የሽማግሌት ዋጋ መመዘኛ	
ለድሬድዋ አስተዳደር ካውንስል.....	33
ሠንጠረዥ 8ሀ: ጠቅላላ የሽማግሌት ዋጋ መመዘኛ ኢንዱስትሪ በስሩ የተካተቱ	
ክፍሎች ለጋምቤላ ህዝቦች ክልላዊ መንግስት .....	34
ሠንጠረዥ 8ለ: ጠቅላላ ምግብና የምግብ ክፍሎች የሽማግሌት ዋጋ መመዘኛ	
ለጋምቤላ ህዝቦች ክልላዊ መንግስት.....	35
ሠንጠረዥ 9ሀ: ጠቅላላ የሽማግሌት ዋጋ መመዘኛ ኢንዱስትሪና በስሩ የተካተቱ ክፍሎች	
ለሐረሪ ህዝብ ክልላዊ መንግስት.....	36
ሠንጠረዥ 9ለ: ጠቅላላ ምግብና የምግብ ክፍሎች የሽማግሌት ዋጋ መመዘኛ	
ኢንዱስትሪ ለሐረሪ ህዝብ ክልላዊ መንግስት.....	37
ሠንጠረዥ10ሀ: ጠቅላላ የሽማግሌት ዋጋ መመዘኛ ኢንዱስትሪና በስሩ የተካተቱ	
ክፍሎች ለኦሮሚያ ክልላዊ መንግስት.....	38
ሠንጠረዥ 10ለ: ጠቅላላ ምግብና የምግብ ክፍሎች የሽማግሌት ዋጋ መመዘኛ	
ኢንዱስትሪ ለኦሮሚያ ክልላዊ መንግስት.....	39
ሠንጠረዥ 11ሀ: ጠቅላላ የሽማግሌት ዋጋ መመዘኛ ኢንዱስትሪና በስሩ የተካተቱ	
ክፍሎች ለደ.ኢ.ብ.ብ.ሀ ክልላዊ መንግስት.....	40
ሠንጠረዥ11 ለ: ጠቅላላ ምግብና የምግብ ክፍሎች የሽማግሌት ዋጋ መመዘኛ	
ኢንዱስትሪ ለደ.ኢ.ብ.ብ.ሀ ክልላዊ መንግስት .....	41
ሠንጠረዥ 12ሀ: ጠቅላላ የሽማግሌት ዋጋ መመዘኛ ኢንዱስትሪ በስሩ የተካተቱ	
ክፍሎች ለሶማሌ ክልላዊ መንግስት .....	42
ሠንጠረዥ 12ለ: ጠቅላላ ምግብና የምግብ ክፍሎች የሽማግሌት ዋጋ መመዘኛ	

ኢንዱስትሪ ለሰማሌ ክልላዊ መንግስት.....	43
ሠንጠረዥ13ሀ: ጠቅላላ የሽማግሌት ዋጋ መመዘኛ ኢንዱስትሪና በስፍ የተካተቱ ክፍሎች ለትግራይ ክልላዊ መንግስት.....	44
ሠንጠረዥ 13ለ: ጠቅላላ ምግብና የምግብ ክፍሎች የሽማግሌት ዋጋ መመዘኛ ኢንዱስትሪ ለትግራይ ክልላዊ መንግስት .....	45

# CONTENTS

	<b>Page</b>
Introduction.....	5
Inflation Rate.....	8
Comparison of CPI Movements, Current Vs Last Year's Similar Months, at country Level.....	11
Comparison of CPI Movements, Current Vs Last Month, at country and Regional Levels.....	13

## LIST OF TABLES

Table a: Number of Markets Covered and Basket of Commodities by Region.....	3
Table 1a: General Consumer Price Index and Its Components at Country Level.....	17
Table 1b: Consumer Price Index of Total Food and Its Components at Country Level.....	18
Table 1c: Consumer Price Index of House Rent, Construction Materials, Water, Fuel and Power and Its Components at Country Level.....	19
Table 2a: Summary of General Consumer Price Indices at Country and Regional Levels.....	20
Table 2b: Summary of Consumer Price Indices of Food at Country and Regional Levels.....	22
Table 3a: General Consumer Price Index and Its	

Components for the City of Addis Ababa Administration.....	24
Table 3b: Consumer Price Index of Total Food and Its	
<i>Components for the City of Addis Ababa Administration.....</i>	<i>25</i>
Table 4a: General Consumer Price Index and Its	
Components for the Afar Regional State.....	26
Table 4b: Consumer Price Index of Total Food and Its	
Components for the Afar Regional State.....	27
Table 5a: General Consumer Price Index and Its	
Components for the Amhara Regional State.....	28
Table 5b: Consumer Price Index of Total Food and Its	
Components for the Amhara Regional State.....	29
Table 6a: General Consumer Price Index and Its	
Components for the Benishangul-Gumuz Regional State.....	30
Table 6b: Consumer Price Index of Total Food and Its	
<i>Components for the Benishangul-Gumuz Regional State.....</i>	<i>31</i>
Table 7a: General Consumer Price Index and Its	
Components for the Dire Dawa Administrative Council.....	32
Table 7b: Consumer Price Index of Total Food and Its	
<i>Components for the Dire Dawa Administrative Council.....</i>	<i>33</i>
Table 8a: General Consumer Price Index and Its	
Components for the Gambela Peoples Regional State.....	34
Table 8b: Consumer Price Index of Total Food and Its	
<i>Components for the Gambela Peoples Regional State.....</i>	<i>35</i>
Table 9a: General Consumer Price Index and Its	
Components for the Harari Peoples Regional State.....	36

Table 9b: Consumer Price Index of Total Food and Its Components for the Harari Peoples Regional State.....	37
Table 10a: General Consumer Price Index and Its Components for the Oromia Regional State.....	38
Table 10b: Consumer Price Index of Total Food and Its Components for the Oromia Regional State.....	39
Table 11a: General Consumer Price Index and Its Components for the SNNP Regional State.....	40
Table 11b: Consumer Price Index of Total Food and Its Components for the SNNP Regional State.....	41
Table 12a: General Consumer Price Index and Its Components for the Somali Regional State.....	42
Table 12b: Consumer Price Index of Total Food and Its Components for the Somali Regional State.....	43
Table 13a: General Consumer Price Index and Its Components for the Tigray Regional State.....	44
Table 13b: Consumer Price Index of Total Food and Its Components for the Tigray Regional State.....	45

**መግቢያ**

የሽማግሌት ዋጋ መመዘኛ ኢንዱክሽን ማለት ሽማግሌት ለተወሰኑ ዕቃዎችና አገልግሎቶች የክፈሉትን አማካይ የዋጋ ለውጥ ለመለካት የሚያገለግል ጠቋሚ አህዝ ነው። የዋጋ መመዘኛ ኢንዱክሽን አብዛኛውን ጊዜ መሠረት የሚያደርገው የቤተሰብ ገቢ፣ የፍጆታና ወጪ ጥናት ውጤት በሆነው ቤተሰቦች በዕቃዎችና ግልጋሎቶች ላይ ባወጡት የመቶኛ ድርሻ መጠንና የወቅቱ የገበያ ዋጋ ላይ ነው። በዚህ ሪፖርት ውስጥ የተካተቱት 12 ኢንዱክሶች (የ11 ክልሎችና የአገር አቀፍ) መሠረት ያደረጉት የማዕከላዊ ስታቲስቲክስ ኤጀንሲ በ2008 በጀት ዓመት በመላ አገሪቱ በናሙና በተመረጡ ቦታዎች ያካሄደውን የቤተሰብ ገቢ፣ ፍጆታና ወጪ ጥናት ውጤት ነው።

ይህ ታህሳስ ወር 2009 ዓ.ምን መሠረት ያደረገው (ታህሳስ 2009=100) የሽማግሌት ዋጋ መመዘኛ ኢንዱክሽን በክልል ደረጃ ሲዘጋጅ በዓይነቱ ለአራተኛ ጊዜ የተዘጋጀ ሲሆን በታህሳስ 2004 ዓ.ም መሠረት ያደረገውን የሽማግሌት መመዘኛ ኢንዱክሽን የሚተካ ነው። በአገር አቀፍ ደረጃ ከ1988 ጀምሮና በአዲስ አበባ ከተማ ደረጃ ደግሞ ከ1955 ዓ.ም ጀምሮ በየወሩ ተመሳሳይ ኢንዱክሶች የተዘጋጁ ለተጠቃሚዎች ሲሰራጩ መቆየታቸው ይታወቃል። እነዚህ 12 የዋጋ መመዘኛ ኢንዱክሶች በአገሪቱ የሚገኙ 11 ክልሎችና የአገር አቀፍን ሪፖርት ጨምሮ የሚሸፍነው የዕቃዎችና የአገልግሎቶችን ክምችት በያዙ ሁለት ዋና ክፍሎች የተከፈሉ ናቸው። እነሱም፡- የምግብና ምግብ ነክ ያልሆኑ መመዘኛ ኢንዱክሶች ሲሆን ምግብ ነክ ያልሆኑ መመዘኛ ኢንዱክሽን እንደገና በ11 ንዑስ ክፍሎች ይከፈላል። እነዚህም መጠጥ፣ ሲጃራና ትምባሆ፣ ልብስና መጫሚያ፣ የቤት ኪራይ፣ የቤት መስሪያ ዕቃዎች፣ ውሃና ኢነርጂ፣ የቤት ዕቃዎች፣ የቤት ማስገባቶች፣ የቤት ቁሳቁስና የቤት ሠራተኛ ደመወዝ፣ ሕክምና፣ ትራንስፖርት፣ መገናኛ፣ መዝናኛና ባህል፣ ትምህርት፣ ሬስቶራንትና ሆቴሎች እንዲሁም ሌሎች ዕቃዎችና አገልግሎቶች ሲሆኑ የሁሉም ክፍሎች አጠቃላይ ውጤት የሚሆነው ደግሞ የጠቅላላ ዋጋዎች መመዘኛ ኢንዱክሽን ነው።

በሁሉም ክልሎች የጠቅላላ ዋጋ መመዘኛ ኢንዱክሶች ስሌት አብዛኛውን የመቶኛ ወጪ ድርሻ የሚይዘው የምግብና አልኮል ያልሆኑ መጠጦች መመዘኛ ኢንዱክሽን ሲሆን በሁሉም የምግብ ዋጋ መመዘኛ ኢንዱክሶች ዋና ዋና ክፍሎች ዳቦና እህል፣ ሥጋ፣ ዓሣና የባህር ምግቦች፣ ወተት፣ አይብና እንቁላል፣ ዘይትና ቅባቶች፣ ፍራፍሬ፣ አትክልትና ጥራጥሬ፣ ስኳር ማርና ቸኮሌት፣ ሌሎች ምግቦችና አልኮል ያልሆኑ መጠጦች ናቸው።

ለዋጋ ኢንዱክሶቹ የተመረጡት ዕቃዎችና አገልግሎቶች የዋጋ መረጃ የሚሰበሰበው በየዞን/በየልዩ ወረዳ በተመረጡ ወካይ ከተሞች ውስጥ ባሉ የገበያ ቦታዎች ነው። በመሆኑም ከእያንዳንዱ ዞን ሁለት ከተሞች (የገበያ ቦታዎች) የተመረጡ ሲሆን እንደዚሁም በእያንዳንዱ ልዩ ወረዳ አንድ ከተማ (የገበያ ቦታ) በጥናቱ እንዲካተት ተደርጓል።



በእነዚህ ከተሞች ውስጥ ተመድበው ለሚሰሩ መረጃ ሰብሳቢዎች በየበጀት ዓመቱ መጨረሻ በመረጃ አሰባሰብ ዘዴው ላይ ስልጠና የሚሰጥ ሲሆን ለአሰባሰቡ የሚረዱ የመስክ መገልገያ መሣሪያዎች (ካፒ፣ሚዛን፣ሜትር...ወዘተ) ይሰጣቸዋል። እነዚህ መሣሪያዎችን በመጠቀም በየወሩ የዋጋ መረጃዎችን ከነጋዴዎች ይሰበስባሉ።አንዳንድ ጊዜም አንድ በላተኛ ወይም ገዥ ከነጋዴ ሲገዛ ቢገኝና ለሥራው ተባባሪነቱን ካሳየ መረጃው ክርሱም ይሰበስባል። የችርቻሮ ዋጋ መረጃ የሚሰበሰበው እንደ አውሮፖውያን ዘመን አቆጣጠር ወሩ በገባ ከ1ኛው ቀን አንስቶ እስከ 15ኛው ቀን ነው። የክልል ኢንዱስትሪ ለማስላት ለኢንዱስትሪ ለተመረጡት እቃዎችና አገልግሎቶች አማካይ የችርቻሮ ዋጋቸውን የጂኦሜትሪክ ሚን ዘዴ ጥቅም ላይ ውሏል። የኢንዱስትሪ ሪፖርቱም በየወሩ እ.አ.አ በሁለተኛው ወር 5ኛው ቀን ለተጠቃሚዎች ይሰራጫል። በተጨማሪም ሪፖርቱ በማዕከላዊ ስታቲስቲክስ ኤጀንሲ ድረ-ገጽ ላይ በየወሩ ይወጣል።

የአገር አቀፍ የችርቻሮ ዋጋ መመዘኛ ኢንዱስትሪ የሚሰላው እያንዳንዱ ክልል ለአገር አቀፍ የቤተሰብ ወጪ ያለውን የመቶኛ ድርሻ መሠረት በማድረግ ነው።በመሆኑም ለአገር አቀፍ ኢንዱስትሪ ስሌት ከ94 በመቶ በላይ አስታውጾ የሚያደርጉ ክልሎች በቅደም ተከተል ኦሮሚያ፣አማራ፣የደቡብ ብሄር ብሄረሰቦችና ሕዝቦች፣አዲስ አበባና ትግራይ ሲሆኑ የተቀሩት ክልሎች በየወሩ ለሚታየው አገር አቀፍ የችርቻሮ ዋጋ መመዘኛ ኢንዱስትሪ ስሌት የሚኖራቸው አስታውጾ ከስድስት በመቶ የማይበልጥ ነው።

ለችርቻሮ ዋጋ ጥናት በአጠቃላይ 119 የገበያ ቦታዎች የተመረጡ ሲሆን በእያንዳንዱ ክልል የተመረጡ የገበያዎች ብዛትና በየኢንዱስትሪዎቻቸው ማዕቀፍ የተካተቱ ዕቃዎች/አገልግሎቶች ብዛት ከዚህ በታች ቀርቧል።

ሠንጠረዥ ሀ፡ በጥናቱ የተሸፈኑ ገበያዎች በኢንዱስትሪ ማዕቀፍ የተካተቱ ዕቃዎች አገልግሎቶች ብዛት በክልል

Table A: Number of Markets Covered and Basket of Commodities by Region.

ተ/ቁ No.	ክልል	የገበያ ቦታዎች ብዛት	በኢንዱስትሪ የተካተቱ ዕቃዎች/አገልግሎቶች ብዛት Basket of Goods and Services				Region
			Markets	ታህሳስ 1993= 100	ታህሳስ1999 =100	ታህሳስ 2004=100	
1	ትግራይ	8	114	143	157	165	Tigray
2	አፋር	4	85	153	123	135	Afar
3	አማራ	20	118	144	160	132	Amhara
4	አሮሚያ	24	127	161	175	171	Oromia
5	ሶማሌ	6	85	122	120	111	Somalie
6	ቤኒሻንጉል ጉሙዝ	6	111	142	164	134	Ben- Gumuz
7	ደ.ብ.ብ.ሀ	31	130	152	168	173	SNNP
8	ጋምቤላ	3	105	103	131	107	Gambela
9	ሐረሪ	2	102	158	115	156	Harari
10	አዲስ አበባ	12	175	193	165	185	Addis Ababa
11	ድሬድዋ	3	121	150	139	155	D. Dawa
		119	116	147	147	148	

ለጠቋሚ አሀዙ ክንዋኔ ዋናው ነገር ጠቋሚ አሀዙ ማዕቀፍ ተካትተው በዋናነት የሚያገለግሉ እቃዎችና አገልግሎቶች የመምረጥ ጉዳይ ነው። ጠቋሚ አሀዞች የሚመሰረቱት አጠቃላይ በናሙና በሚመረጡ ዕቃዎች ላይ ሲሆን በጠቋሚ አሀዙ ማዕቀፍ ውስጥ መካተት የሚገባው ዕቃ መወሰን ግን ሁሌም ቀላል የሚባል ተግባር አይደለም። የተያያዩ የአመራረጥ ዘዴ መጠቀም ቢቻልም የሚመረጡት ዕቃዎች ለረጅም ጊዜ የሚኖራቸው ተፈላጊነት፣ በአስተማማኝ ሁኔታ በገበያ ላይ የመገኘታቸው ጉዳይ፣ ሌሎችን ዕቃዎች የመወከል ብቃትና ከሌሎች ምርቶች ጋር ያላቸው ተወዳዳሪነት መሠረት ያደረገ እንዲሆን ይፈለጋል። በአጠቃላይ የተመረጡት ዕቃዎች በበቂ መጠን የመገኘታቸው ሁኔታ፣ በየወቅቱ ተወዳዳሪነታቸውና ዕቃዎችና አገልግሎቶች ምድቡን የመወከላቸው ብቃትን ማረጋገጥ ያስፈልጋል።

ይህ ታህሳስ 2009 ዓ/ም መሠረት ያደረገው የሸማቾች ዋጋ መመዘኛ ኢንዱክስ አይነቶችና እያንዳንዳቸው ዋና ክፍል ያለው የወጪ ድርሻ በገፅ 7 ላይ ይታያል። ይህ ሠንጠረዥ እንደሚያሳየው የምግብ የመቶኛ የወጪ ድርሻ ታህሳስ 2004 ዓ/ም ከነበረው 53 በመቶ ወደ 54 በመቶ ጨምሮአል። በአንፃሩ ደግሞ ምግብ ነክ ያልሆነ መመዘኛ ኢንዱክስ ታህሳስ 2004 ዓ/ም ከነበረው 47 በመቶ የወጪ ድርሻ ወደ 46 በመቶ ዝቅ ብሏል።

## **Introduction**

The Consumer Price Index (CPI) measures the average change in the price paid by consumers for a fixed market basket of goods and services. It is usually based on household expenditure weights of the goods and services in the basket and their current market prices. The twelve CPI's (i.e., the CPI's of the 11 Regions and the CPI at Country Level) presented in this report are based on the results of the Household Income, Consumption and Expenditure Survey (HICES) conducted by the Central Statistical Agency in 2015/2016 from which expenditure weights are derived for major household goods and services of that period and adjusted using the December 2016 retail prices of the goods and services as a base period.

The December 2016 based CPI updates the previous CPI series (i.e. December 2011 based) and the newly selected baskets are more diversified and the weights are more accurate. It also showed various improvements and incorporates non-food index as an independent group. The new series is constructed for country as a whole and Regional States including Dire Dawa and the Addis Ababa City Administration. However, similar indices had been utilized at Addis Ababa Level since 1963 and at Country, Urban and Rural Levels since 1995/96 and in Country and Regional level since 2000.

All the twelve general indices are divided into two major groups that is food and non-food index. The non-food index has eleven major divisions each, namely: Alcoholic Beverages; Cigarettes and Tobacco; Clothing and Footwear; House Rent, Construction Materials, Water, and Fuel and Power; Furniture, Furnishing, Household Equipment and Operation; Health; Transport; Communication; Recreation, Culture; Education; Restaurants and Hotels; and Miscellaneous Goods and Services. On the other hand, the Food Index has 10 classes. These are: Bread and Cereals; Meat; Fish and Seafood; Milk, Cheese and Eggs; Oil and Fats; Fruits; Vegetables and Pulses, Sugar, Honey and Chocolate; Food Products n,e.c., and Non-alcoholic beverages.

For the construction of the current consumer price indices, up to date data on retail prices are collected in the purposely from selected sample market places located in representative urban centers in each zone/special weredas of the country. Hence, a

total of 119 market places were selected for the retail price survey. In each market place an enumerator is assigned to undertake the data collection activities every month. The price data is collected from the 1<sup>st</sup> day through 15<sup>th</sup> days of European Calendar month under consideration. To calculate the monthly regional consumer price indices, geometric means of prices of the specific regions are used. The distribution of the market place of each region and items included in the basket of commodities are given on Table A on page 3. An important factor in constructing a Consumer Price Index is to select the representative basket of goods and services. Including all consumption items into the market basket of goods and services is both cumbersome and unnecessarily costly in term of data collection and processing. Furthermore, it doesn't make sense to include an insignificant weight into an index basket which could not move the price relative up or downwards compared to the general market trend. As a result, basket of goods and services included in the regional baskets are determined by expenditure cut-off point.

Country level CPI aggregates the regional group indices. The contributions of the six relatively big regions in terms of the magnitude of the expenditure account for more than 95 percent, namely, these regions are Oromia, Amhara, SNNP, Addis Ababa, Somali and Tigray. On the other hand, the contributions of the remaining regions to the Country Level Consumer Price Index is about five percent.

According to the weights for food and non-food groups in Table B below, the December 2016 based CPI is about 54 percent of household expenditure spent on the food component, which increased by 1 percentage points as compared to the December 2006 based CPI. On the other hand, the expenditure on non-food components decreased from 47 percent to 46 percent. The reason for  $\pm 1$  percentage point change was that the share of food increased in the two geographically and economically big regions of Oromia and Southern Peoples region.

The 2011 and 2016 CPI adapted the full version of the latest Classification of Individual Consumption by Purpose (COICOP) while the 2006 based CPI was an earlier version of COICOP. The following table shows the different COICOP versions by Comparison. In the 2006 based CPI Recreation, Entertainment and Education; and

Transport and Communication were put in the same divisions while the 2011 and 2016 based CPI separated them as standalone divisions. A new division called Restaurants and Hotels was introduced in the 2011 and 2016 based CPI by moving the food taken away from home previously categorized with Food to this new division. Non-Alcoholic beverages were taken out of the Non-Food division and moved to the Food division.

**Table B: Major groups in the 2006, 2011 and 2016 based CPI and their weights  
At Country Level**

Comparison of COICOP Divisions	December 2006=100	December 2011=100	December 2016=100
<b>1. FOOD AND NON-ALCOHOLIC BEVERAGES</b>	<b>57%</b>	<b>53%</b>	<b>54%</b>
<b>Non - FOOD</b>	<b>43%</b>	<b>47%</b>	<b>46%</b>
<b>2. ALCOHOLIC BEVERAGES AND TOBACCO, NARCOTICS</b>	2.5	4.85	4.9
<b>3. CLOTHING AND FOOTWEAR</b>	8.32	6.62	5.7
<b>4. HOUSING, WATER, ELECTRICITY, GAS AND OTHER FUELS</b>	20.56	16.34	16.8
<b>5. FURNISHINGS, HOUSEHOLD EQUIPMENT AND ROUTINE MAINTENANCE OF THE HOUSE</b>	3.75	5.41	4.7
<b>6. HEALTH</b>	1.11	1.08	1.5
<b>7. TRANSPORT</b>	2.5	2.80	2.5
<b>8. COMMUNICATION</b>	-	1.08	2.0
<b>9. RECREATION AND CULTURE</b>	1.1	0.60	0.4
<b>10. EDUCATION</b>	-	0.45	0.2
<b>11. RESTAURANTS AND HOTELS</b>	-	5.46	5.3
<b>12. MISCELLANEOUS GOODS AND SERVICES</b>	3.2	2.56	2.5
<b>Total</b>	<b>100</b>	<b>100</b>	<b>100</b>

**የሚያዝያ ወር 2013 ዓ.ም የዋጋ ግሽበት ሁኔታ**

**ሀ) የ12 ወራት ተንከባላይ አማካይ አገራዊ የዋጋ ግሽበት**

ከሠንጠረዥ "ሐ" መረዳት እንደሚቻለው በሚያዝያ ወር 2013 ዓ/ም የተመዘገበው የ12 ወራት ተንከባላይ አማካይ አገራዊ አጠቃላይ የዋጋ ግሽበት ካለፈው ዓመት ተመሳሳይ ወቅት ጋር ሲነፃፀር በ19.9 በመቶ ጭማሪ አሳይቷል። በሚያዝያ ወር 2013 ዓ.ም አገራዊ የ12 ወራት ተንከባላይ አማካይ የምግብ የዋጋ ግሽበት በ22.3 በመቶ ዕድገት አሳይቷል። የ12 ወራት ተንከባላይ አማካይ አገራዊ ምግብ ነክ ያልሆኑ የዋጋ ግሽበትም በ16.8 በመቶ ጭማሪ አሳይቷል። የ12 ወራት ተንከባላይ አማካይ የዋጋ ግሽበት ረዘም ያለ ጊዜ የዋጋ ግሽበት ሁኔታ የሚያሳይ ነው።

**ለ) የዋጋ ግሽበት ሁኔታ ካለፈው ዓመት ተመሳሳይ ወር ጋር በማነፃፀር**

የዋጋ ግሽበት ሁኔታ ካለፈው ዓመት ተመሳሳይ ወር ጋር በማነፃፀር የሚገኘው ውጤት ወቅታዊ የዋጋ ግሽበት ሁኔታን ይገልጻል። ሠንጠረዥ/መ/የሚያሳየው የዋጋ ግሽበት ሁኔታ ካለፈው ዓመት ተመሳሳይ ወር ጋር በማነፃፀር ነው። ከሠንጠረዥ መረዳት እንደሚቻለው የሚያዝያ ወር 2013 ዓ/ም አጠቃላይ የዋጋ ግሽበት ካለፈው ዓመት ሚያዝያ ወር 2012 ዓ.ም ጋር ሲነፃፀር በ19.2 በመቶ ከፍ ብሏል። የምግብ ዋጋ ግሽበት የሚያዝያ ወር 2013 ዓ.ም ካለፈው ዓመት ሚያዝያ ወር 2012 ዓ.ም ጋር ሲነፃፀር በ21.7 በመቶ ጭማሪ አሳይቷል። በእህሎች ላይ የታየው የዋጋ ጭማሪ በያዘነው ወርም የቀጠለ ሲሆን ለምግብ ዋጋ ግሽበት መጨመር ከፍተኛ አስተዋጽኦ አላቸው። በተጨማሪም የምግብ ዘይት፣ ቅቤ፣ ቅመማ ቅመም **(በርበሬ)** እና ቡና የዋጋ ጭማሪ በዚህም ወር በመቀጠላቸው ለዋጋ ግሽበት ምጣኔ መጨመር አስተዋጽኦ አድርገዋል። ካለፈው ወር ጋር ሲነጻጸር ጎመን፣ ቀይ ሽንኩርት፣ ነጭ ሽንኩርት፣ ድንችና ቆጮ መጠነኛ ቅናሽ አሳይተዋል። ያለፈው ዓመት ተመሳሳይ ወር ዋጋ ከአሁኑ ዓመት ተመሳሳይ ወር ጋር በንጽጽር ዝቅተኛ ስለነበር የዋጋ ግሽበቱ በያዘነው ወርም ከፍ ብሏል። በሌላ በኩል ምግብ ነክ ያልሆኑ የኢንዱስትሪ ክፍሎች የዋጋ ግሽበት የሚያዝያ ወር 2013 ዓ.ም ካለፈው ዓመት ሚያዝያ ወር 2012 ዓ/ም ጋር ሲነፃፀርም የ16.0 በመቶ ጭማሪ አሳይቷል። ከምግብ ነክ ያልሆኑ የኢንዱስትሪ ክፍሎች የዋጋ ግሽበት ካለፈው ተመሳሳይ ወቅት ጋር ሲነፃፀር ከፍ እንዲል ካደረጉት ዋና ምክንያቶች ውስጥ በተለይም በአልኮልና ትምባሆ ትምባሆ፣ ልብስና ጫማ፣ አነቃቂዎች (ጫት)፣ የቤት እንክብካቤና ኢነርጅ (ማገደና ከሰል)፣ የቤት መስሪያ እቃዎች (ሲሚንቶና የቤት ኪዳን ቆርቆር)፣ ህክምና፣ ትራንስፖርት እና ጌጣጌጥ (ወርቅ) ላይ የታየው የዋጋ ጭማሪ ነው።

**ሐ) የዋጋ ግሽበት ሁኔታ የአሁኑን ወር ካለፈው ወር ጋር በማነፃፀር**

የሚያዝያ ወር 2013 ዓ/ም አጠቃላይ የዋጋ ግሽበት ካለፈው ወር ጋር ሲነፃፀር በ0.8 በመቶ ጭማሪ አሳይቷል። ወርሃዊ የዋጋ ግሽበት ምጣኔው በመጨረሻዎቹ ሁለት ተከታታይ ወራት መካከል ያለውን የዋጋ ለውጥ ለመለካት ያገለግላል። ወርሃዊ የዋጋ ግሽበት ምጣኔው የወቅቱን ሁኔታ የሚያሳይ በመሆኑ የአጭር ጊዜ ክስተቱን ብቻ ያመለክታል።

### **April 2021 Country Level Inflation Rate**

#### **12 months Moving Average Inflation at Country Level**

As it is indicated in Table 'C' below the country level overall inflation rate (annual change based on 12 months Moving Average) rose by 19.9 percent in April 2021 as compared to the one observed in a similar period a year ago. The country level food inflation increased by 22.3 percent as compared to the one observed a year ago. The country level Non-food inflation rate increased by 16.8 percent in April 2021 as compared to the one observed in December 2020. The 12 months moving average inflation rate shows the longer term inflationary situation.

#### **a) Inflation based on comparison of Current vs. Last year's similar month at Country Level (Year-on-Year Change)**

Inflation based on comparison of Current vs. Last year's similar month shows the current inflation situation. Table (D) shows Inflation rate based on last year's similar month comparison. As can be seen from the table the April 2021 General year-on-year inflation has increased by 19.2 percent as compared to the one observed in April 2020. The year-on-year Food inflation has increased by 21.7 percent in April 2021 as compared to the one observed in April 2020. Cereal prices continued to increase in the current month which has great contribution for the rise of food inflation. In addition, the continued increase in the prices of edible Oil, Butter, Spices (**Pepper**) and coffee during the current month has contributed to an increase in the rate of inflation. Compared to last month, the prices of Ethiopian Kale, Onion, Garlics, Potatoes and Kocho had slightly declined. The annual inflation rate showed an increase in the current month since prices were relatively lower in the same month last year. The Non-Food inflation showed an increase of 16.0 percent in April 2021 as compared to the one observed in April 2020. The rise in Non-food Inflation is mainly due to rise in the prices of Alcohol and Tobacco, Stimulants (Chat), Clothing and Footwear, Housing Repair and Maintenance (Cement and Corrugated Iron sheets), and Energy (Firewood and Charcoal), Medical care, Transport (fuel) and Jewelry (Gold).

#### **Inflation based on comparison of Current vs. Last month at Country Level (month-on-month)**

*The month-on-month General CPI for April 2021 has showed an increase of 0.8 Percent as compared to the preceding month. The monthly inflation rate measures the price change between the two latest months. Although up to date, it can be affected by seasonal and other short term effects.*



**ሠንጠረዥ ሐ: በአገር አቀፍ ደረጃ የ12 ወራት ተንከባላይ አማካይ የዋጋ ግሽበት ሁኔታ**

**Table C: The Country Level 12 months Moving Average Inflation Rate**

ወርና በጀት ዓመት	የዋጋ ግሽበት ሁኔታ			Budget Year and months
	አጠቃላይ የዋጋ ግሽበት	የምግብ ዋጋ ግሽበት	ምግብ ነክ ያልሆኑ የዋጋ ግሽበት	
	General Inflation	Food Inflation	Non-Food Inflation	
ሐምሌ 2009-ሰኔ 2010 (ዓመታዊ አማካይ)	10.6	11.0	11.0	July 2017 – June 2018 (Annual Average)
ሐምሌ 2010-ሰኔ 2011 (ዓመታዊ አማካይ)	13.7	12.8	14.9	July 2018 – June 2019 (Annual Average)
ሐምሌ 2011 - ሰኔ 2012 (ዓመታዊ አማካይ)	16.2	19.2	12.8	July 2019 – June 2020 (Annual Average)
መጋቢት 2012	18.3	22.2	13.7	March 2020
ሚያዝያ 2012	19.1	23.1	14.4	April 2020
ግንቦት 2012	19.4	23.1	15.0	May 2020
ሰኔ 2012	19.9	23.3	15.9	June 2020
ሐምሌ 2012	20.5	23.7	16.6	July 2020
ነሐሴ 2012	20.6	23.6	17.0	August 2020
መስከረም 2013	20.6	23.4	17.2	September 2020
ጥቅምት 2013	20.6	23.4	17.3	October 2020
ህዳር 2013	20.5	23.2	17.1	November 2020
ታህሳስ 2013	20.4	23.1	17.0	December 2020
ጥር 2013	20.4	23.2	16.9	January 2021
የካቲት 2013	20.3	23.0	17.0	February 2021
መጋቢት 2013	20.2	22.6	17.1	March 2021
ሚያዝያ 2013	19.9	22.3	16.8	April 2021

**ሠንጠረዥ መ: የዘንድሮውና የአምናው ተመሳሳይ ወሮች የሽማቾች ዋጋ ኢንዱክስ ለውጥ ገጽጽ በአገር አቀፍ ደረጃ**

**Table D: Summary of Comparison of CPI Movements, Current vs. Last year's Similar Months at Country Level**

ወርና በጀት ዓመት	የዋጋ ግሽበት ሁኔታ			Budget Year and months
	አጠቃላይ የዋጋ ግሽበት	የምግብ ዋጋ ግሽበት	ምግብ ነክ ያልሆኑ የዋጋ ግሽበት	
	General Inflation	Food Inflation	Non-Food Inflation	
ሐምሌ 2009-ሰኔ 2010 (ዓመታዊ አማካይ)	14.4	13.5	15.8	July 2017 – June 2018 (Annual Average)
ሐምሌ 2010-ሰኔ 2011 (ዓመታዊ አማካይ)	12.6	13.1	12.0	July 2018 – June 2019 (Annual Average)
ሐምሌ 2011 - ሰኔ 2012 (ዓመታዊ አማካይ)	19.9	23.3	15.8	July 2019 – June 2020 (Annual Average)
መጋቢት 2012	22.6	26.9	17.6	March 2020
ሚያዝያ 2012	22.9	25.9	19.2	April 2020
ግንቦት 2012	19.8	20.3	19.1	May 2020
ሰኔ 2012	21.6	23.1	19.7	June 2020
ሐምሌ 2012	22.3	24.9	18.9	July 2020
ነሐሴ 2012	20.0	22.0	17.5	August 2020
መስከረም 2013	18.7	21.2	15.5	September 2020
ጥቅምት 2013	19.3	23.2	14.4	October 2020
ህዳር 2013	19.0	22.1	15.1	November 2020
ታህሳስ 2013	18.2	21.3	14.3	December 2020
ጥር 2013	19.2	23.1	14.5	January 2021
የካቲት 2013	20.6	22.8	18.0	February 2021
መጋቢት 2013	20.6	22.0	18.9	March 2021
ሚያዝያ 2013	19.2	21.7	16.0	April 2021

ሠንጠረዥ ሠ: የአሁኑና ያለፈው ወር የሽማግሌት ዋጋ ኢንዱስትሪ ለውጥ ንጽጽር በአገር አቀፍ ደረጃ

**Table E: Summary of Comparison of CPI Movements, Current vs. Last month at Country Level**

ወርና በጀት ዓመት	የዋጋ ግሽበት ሁኔታ			Budget Year and months
	አጠቃላይ የዋጋ ግሽበት	የምግብ ዋጋ ግሽበት	ምግብ ነክ ያልሆኑ የዋጋ ግሽበት	
	General Inflation	Food Inflation	Non-Food Inflation	
ሐምሌ 2009-ሰኔ 2010 (ዓመታዊ አማካይ)	1.3	1.1	1.5	July 2017 – June 2018 (Annual Average)
ሐምሌ 2010-ሰኔ 2011 (ዓመታዊ አማካይ)	1.2	1.5	0.8	July 2018 – June 2019 (Annual Average)
ሐምሌ 2011 - ሰኔ 2012 (ዓመታዊ አማካይ)	1.7	1.8	1.5	July 2019 – June 2020 (Annual Average)
መጋቢት 2012	3.0	3.6	2.2	March 2020
ሚያዝያ 2012	2.1	2.8	1.1	April 2020
ግንቦት 2012	1.7	1.4	2.0	May 2020
ሰኔ 2012	2.9	4.1	1.4	June 2020
ሐምሌ 2012	2.0	3.1	0.5	July 2020
ነሐሴ 2013	0.5	0.8	0.0	August 2020
መስከረም 2013	0.6	0.6	0.5	September 2020
ጥቅምት 2013	0.4	0.9	-0.4	October 2020
ህዳር 2013	0.4	-0.4	1.5	November 2020
ታህሳስ 2013	-0.1	-1.4	1.6	December 2020
ጥር 2013	1.6	2.1	1.1	January 2021
የካቲት 2013	4.0	3.3	5.0	February 2021
መጋቢት 2013	2.9	3.0	2.9	March 2021
ሚያዝያ 2013	0.8	2.5	-1.3	April 2021

# የዘንድሮውና የአምናው ተመሳሳይ ወሮች የችርቻሮ ዋጋ መመዘኛ ጠቋሚ አሃዝ

## ንፅፅር በአገር አቀፍ ደረጃ

*Comparison of CPI Movements, Current vs Last year's Similar Months at Country Level*

ከሠንጠረዥ(ሀ) መረዳት እንደሚቻለው ሚያዝያ ወር 2013 ዓ/ም የአገር አቀፍ ጠቅላላ የችርቻሮ ዋጋ ኢንዱክስ ከሚያዝያ ወር 2012 ዓ/ም ጠቅላላ ኢንዱክስ ጋር ሲነፃፀር በ19.2 ከመቶ ጭማሪ አሳይቷል። ለዚህ ጭማሪ ምክንያት የሆኑት ምግብና አልኮል ያልሆኑ መጠጦች 21.7 ከመቶ፣ መጠጥ፣ ሲጃራና ትምባሆ በ12.1 ከመቶ፣ ልብስና መጫሚያ በ20.6 ከመቶ፣ የቤት ኪራይ፣ የቤት መስሪያ እቃዎች፣ ውሃና ኢነርጅ በ9.1 ከመቶ፣ የቤት ዕቃዎች፣ የቤት ማስገባቂያዎች፣ የቤት ቁሳቁስና የቤት ሠራተኛ ደመወዝ በ22.5 ከመቶ፣ ህክምና 32.4 ከመቶ፣ ትራንስፖርት 24.9 ከመቶ፣ መገናኛ በ22.7 ከመቶ፣ መዘናኛና ባህል 22.0 ከመቶ፣ ትምህርት በ14.0 ከመቶ፣ ሬስቶራንትና ሆቴሎች በ19.9 ከመቶ እና ሌሎች ዕቃዎችና አገልግሎቶች በ20.9 ከመቶ በየኢንዱክሶቻቸው ላይ ጭማሪ በማሳየታቸው ነው።

*The April 2021 Country Level Consumer Price Index has increased by 19.2 percent as compared to April 2020 (Table 1(a)). This increase in the General Consumer Price Index is attributed to the rise observed in the indices of Food and Non-alcoholic beverages 21.7 percent, Alcoholic Beverages and Tobacco by 12.1 percent, Clothing and Footwear by 20.6 percent, House Rent, Construction Materials, Water and Fuel and Power by 9.1 percent, Furniture, Furnishings, Household Equipment and Operation by 22.5 percent, Health 32.4 percent, Transport by 24.9 percent, communication by 22.7 percent, Recreation and Culture by 22.0 percent, Education by 14.0 percent, Restaurant and Hotels 19.9 percent and Miscellaneous Goods by 20.9 percent.*

ሠንጠረዥ(ለ) እንደሚያሳየው ካለፈው ዓመት ተመሳሳይ ወር ጋር ሲነፃፀር አብዛኛዎቹ የምግብ ክፍሎች ጭማሪ አሳይተዋል። ዳቦና እህል በ27.4 ከመቶ፣ ሥጋ በ10.6 ከመቶ፣ ዓሳና የባህር ምግቦች በ12.8፣ ከመቶ ወተት፣ አይብና ዕንቁላል በ33.8 ከመቶ፣ ዘይትና ቅባቶች በ34.5 ከመቶ፣ ፍራፍሬ 5.9 ከመቶ፣ አትክልት፣ ጥራጥሬ ፣ ድንችና ሌሎች ስራ ስሮች በ12.3 ከመቶ፣ ስኳር፣ ማርና ጅኮሌት በ13.7 ከመቶ፣ ሌሎች ምግቦች በ20.9 ከመቶ እና አልኮል ያልሆኑ መጠጦችና ቡና በ22.8 ከመቶ በየኢንዱክሶቻቸው ላይ ዕድገት አሳይተዋል።

*Most of the components of Food index showed increase as compared to similar month last year (Table1(b)). Bread and Cereals by (27.4 percent), Meat (10.6 percent), Fish and Seafood by (12.8 percent), Milk, Cheese and Eggs (33.6 percent), Oil and Fats (34.5 percent), Fruits by (5.9 percent), Vegetables and Pulses, Potatoes and Tubers by (12.3 percent), Sugar, Honey and Chocolate declined by (13.7 percent), Other Food Products and spices n.e.c by (20.9 percent) and Non-Alcoholic beverages and Coffee by 22.8 percent).*

**የዘንድሮውና የአምናው ተመሳሳይ ወሮች የችርቻሮ ዋጋ መመዘኛ ጠቋሚ አሀዝ ንፅፅር በአገር አቀፍና በክልሎች ደረጃ**

*Comparison of CPI Movements, Current vs Last year's Similar Months at Regional Levels*

ከሠንጠረዥ 2(ሀ) መረዳት እንደሚቻለው የሚያዝያ ወር 2013 ዓ/ም የአገር አቀፍ ጠቅላላ የችርቻሮ ዋጋ መመዘኛ ኢንዱክስ ከሚያዝያ ወር 2012 ዓ/ም ጠቅላላ ኢንዱክስ ጋር ሲነፃፀር በ19.2 ከመቶ ጭማሪ አሳይቷል። ለዚህ ጭማሪ አስተዋጽኦ ያደረጉት አዲስ አበባ በ15.9 ከመቶ፣ አፋር 20.1 ከመቶ፣ አማራ 12.8 ከመቶ፣ ቤኒሻንጉል ጉሙዝ በ20.9 ከመቶ፣ ድሬደዋ 14.8 ከመቶ፣ ጋምቤላ 14.4 ከመቶ፣ ሐረሪ በ16.4 ከመቶ፣ ኦሮሚያ በ21.0 ከመቶ፣ ደቡብ ብሄሮች ብሄረሰቦችና ሕዝቦች 24.7 ከመቶ፣ ሶማሌ በ17.8 ከመቶ እና ትግራይ በ19.5 ከመቶ ጭማሪ በማሳየታቸው ነው።

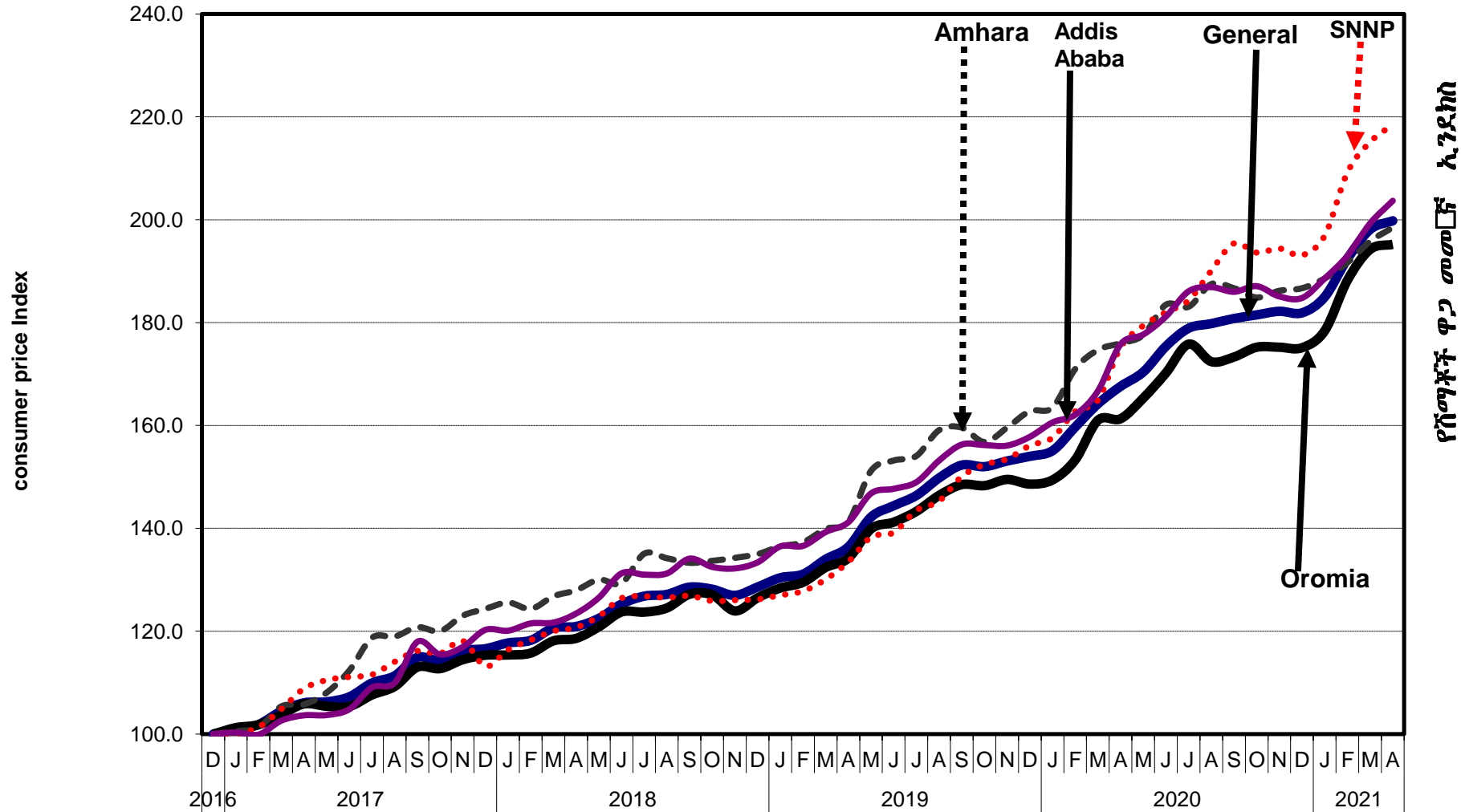
Table 2(a) also displays that the April 2021 Country level General Consumer Price Index has increased by 19.2 percent as compared to April 2020. This increase was attributed to the rise in the indices of its constituent regions; namely: Addis Ababa 15.9 percent, Afar by 20.1 percent, Amhara 12.8 percent, Benishangul Gumuz by 20.9 percent, Dire Dawa 14.8 percent, Gambella 14.4 percent, Harari by 16.4 percent, Oromia 21.0 percent, SNNP by 24.7 percent, Somali by 17.8 percent and Tigray by 19.5 percent.

ሠንጠረዥ 2(ለ) እንደሚያሳየው ለምግብ ኢንዱክስ በ21.7 ከመቶ መጨመር ምክንያት ሆኑት አዲስ አበባ በ25.4 ከመቶ፣ አፋር በ27.5 ከመቶ፣ አማራ በ12.0 ከመቶ፣ ቤኒሻንጉል ጉሙዝ በ22.8 ከመቶ፣ ድሬደዋ በ24.4 ከመቶ፣ ጋምቤላ በ17.1 ከመቶ፣ ሐረሪ በ16.9 ከመቶ፣ ኦሮሚያ 22.1 ከመቶ፣ ደቡብ ብሄሮች ብሄረሰቦችና ሕዝቦች በ28.8 ከመቶ፣ ሶማሌ 23.7 ከመቶ እና ትግራይ በ24.3 ከመቶ በምግብ ኢንዱክሶቻቸው ላይ ጭማሪ አሳይተዋል።

Table 2(b) reveals the rise in the food index by 21.7 percent is due to the rise in the indices of the regions namely: Addis Ababa by 25.4 percent, Afar by 27.5 percent, Amhara 12.0 percent, Benishangul Gumuz by 22.8 percent, Dire Dawa 24.4 percent, Gambella 17.1 percent, Harari 16.9 percent, Oromia 22.1 percent, SNNP 28.8 percent, Somali 23.7 percent and Tigray 24.3 percent.

### General CPI for Country Level and Major Regions

የሽያጭ ስርዓት አጠቃላይ ለአገር አቀፍና ለዋና ዋና ክልሎች



ወንጠረዥ 1፤ ጠቅላላ የሽያጭ ዋጋ መመዘኛ ኢንዱስትሪ በሥራ የተካተቱ ክፍሎች በአገር አቀፍ ደረጃ  
 ታህሳስ 2009 = 100  
 Table 1a: General Consumer Price Index and Its Components Country Level  
 December 2016 = 100

ወርና ዓመት	ጠቅላላ ኢንዱስትሪ	ምግብና አልኮሎል ያልሆኑ መጠቀሞች	ምግብ ነክ ያልሆኑ ኢንዱስትሪ	Non-food Consumer Price Index Components											ወርና ዓመት
				መጠጥ ሲጃራና ትምባሆ	ልብስና መጫጫ ያ	የቤት ኪራይ የቤት መሥሪያ ዕቃዎች ውሃ ነጻጅና ሃይል	የቤት ማስገጫዎች የቤት ቁሳቁስና የቤት ሠራተኛ ደሞዝ	ህክምና	ትራንስፖርት	መገናኛ	መዝናኛና ባህል	ትምህርት	ሬስቶራንትና ሆቴሎች	ሌሎች ዕቃዎችና አገልግሎቶች	
Month an Year	General Index	Food and Non-Alcoholic Beverages	Non-Food Index	Alcoholic Beverages and Tobacco	Clothing and Footwear	Housing, Water, Electricity, Gas and Other Fuels	Furnishings, Household Equipment and Routine Maintenance of the House	Health	Transport	Communication	Recreation and Culture	Education	Restaurants and Hotels	Misellaneous Goods and services	Month an Year
ታህሳስ 2009	100.0	100.0	100.0	100.0	100.0	100.0	100.0	100.0	100.0	100.0	100.0	100.0	100.0	100.0	December 2016
ሐምሌ 2009 - ሰኔ 2010	117.3	118.0	116.5	110.2	124.5	121.0	119.5	97.8	110.0	104.5	116.5	108.2	113.5	108.0	July 2017 - June 2018
ሐምሌ 2010 - ሰኔ 2011	132.0	133.5	130.3	117.7	147.2	132.8	139.5	112.2	124.1	103.7	125.5	124.8	129.6	123.6	July 2018 - June 2019
ሐምሌ 2011 - ሰኔ 2012	158.3	164.7	151.0	139.7	160.5	158.6	152.9	130.1	153.7	104.4	138.7	134.1	153.4	142.6	July 2019 - June 2020
2012															2019/2020
ሐምሌ 2011	146.3	152.6	139.2	123.7	159.3	140.5	149.9	116.1	134.3	106.1	126.5	131.5	143.3	133.4	July 2019
ነሐሴ 2011	149.8	157.6	140.8	126.3	152.8	145.8	150.2	120.0	133.8	106.5	129.3	130.6	143.4	134.8	August "
መስከረም 2012	152.3	159.5	144.1	130.9	157.1	147.9	150.0	124.6	140.0	104.3	133.7	135.7	150.9	138.5	September "
ጥቅምት 2012	152.1	158.4	144.8	131.8	156.8	149.8	150.8	124.0	139.8	103.7	139.1	131.8	150.4	139.1	October "
ሀዳር 2012	153.1	159.1	146.1	130.6	158.6	152.8	151.1	124.5	138.1	104.7	144.9	136.0	150.4	138.8	November "
ታህሳስ 2012	154.0	157.9	149.5	132.1	160.5	158.7	152.3	131.2	140.6	100.1	140.1	134.4	155.1	141.4	December "
ጥር 2012	155.1	158.7	151.0	127.4	162.8	162.6	153.7	124.7	143.7	99.4	144.7	138.1	155.1	143.8	January 2020
የካቲት 2012	159.5	164.5	153.7	132.4	155.7	169.6	152.7	130.1	147.2	101.1	143.3	132.8	157.1	145.3	February "
መጋቢት 2012	164.2	170.4	157.1	152.5	160.7	169.5	154.4	136.0	148.8	102.5	141.5	132.0	157.8	147.5	March "
ሚያዝያ 2012	167.6	175.2	158.9	158.8	161.9	168.7	155.5	139.0	166.3	103.9	140.9	134.7	157.9	148.3	April "
ግንቦት 2012	170.5	177.6	162.3	165.1	164.9	168.3	156.0	152.4	197.3	112.1	142.7	135.1	157.9	149.4	May "
ሰኔ 2012	175.4	184.8	164.6	165.2	174.5	168.6	157.8	138.9	214.1	108.4	137.4	137.1	162.1	150.8	June "
2013															2019/2020
ሐምሌ 2012	179.0	190.7	165.5	159.3	171.0	170.6	157.9	151.1	227.8	105.6	140.2	127.1	163.2	152.6	July 2020
ነሐሴ 2012	179.8	192.2	165.5	156.3	170.5	171.2	159.1	141.6	232.1	106.4	139.6	123.8	163.2	154.2	August "
መስከረም 2013	180.8	193.4	166.4	159.9	169.3	174.7	159.2	149.5	194.9	106.3	140.8	140.0	169.3	159.2	September "
ጥቅምት 2013	181.5	195.1	165.8	163.4	175.9	171.6	159.3	149.2	170.8	105.6	147.3	146.3	174.3	159.4	October "
ሀዳር 2013	182.2	194.3	168.2	167.8	178.0	176.0	159.2	150.9	170.5	103.8	153.2	145.5	174.3	161.3	November "
ታህሳስ 2013	182.0	191.5	171.0	175.3	178.0	176.7	160.8	167.7	171.9	103.6	161.1	144.8	181.6	163.1	December "
ጥር 2013	185.0	195.5	172.9	171.2	180.2	181.2	164.2	162.0	176.4	104.3	161.7	148.4	180.1	165.4	January 2021
የካቲት 2013	192.4	202.0	181.5	177.3	192.6	188.4	174.4	169.0	207.5	121.3	161.1	148.9	180.1	169.8	February "
መጋቢት 2013	198.1	208.0	186.8	181.9	183.9	195.9	182.2	180.7	216.2	126.2	166.4	152.4	189.6	172.7	March "
ሚያዝያ 2013	199.8	213.1	184.4	178.1	195.3	184.0	190.6	184.1	207.8	127.4	171.9	153.6	189.3	179.4	April "
	19.2	21.7	16.0	12.1	20.6	9.1	22.5	32.4	24.9	22.7	22.0	14.0	19.9	20.9	

ወንጠረዥ 30፤ ጠቅላላ የሽያጭ ዋጋ መመዘኛ ለንዲክስና በሥራ የተካተቱ ክፍሎች ለአዲስ አበባ ከተማ አስተዳደር

ታህሳስ 2009 = 100

Table 3a: General Consumer Price Index and Its Components for Addis Ababa City Administration  
December 2016 = 100

ወርና ዓመት	ጠቅላላ ኢንዱክስ	ምግብና አልኮሎል ያልሆኑ መጠጦች	ምግብ ነክ ያልሆኑ ኢንዱክስ	Non-food Consumer Price Index Components											ወርና ዓመት
				መጠጦ ሲጃራና ትምባሆ	ሰብስቦ መጫሚያ	የቤት ኪራይ የቤት መሥሪያ ዕቃዎች ውሃ ንዳጅና ሃይል	የቤት ማስገጫዎች የቤት ቁሳቁስና የቤት ሠራተኛ ደሞዝ	ህክምና	ትራንስፖርት	መገናኛ ባህሪ	መዝናኛና ባህሪ	ትምህርት	ሬስቶራንትና ሆቴሎች	ሌሎች ዕቃዎችና አገልግሎቶች	
Month an Year	General Index	Food and Non-Alcoholic Beverages	Non-Food Index	Alcoholic Beverages and Tobacco	Clothing and Footwear	Housing, Water, Electricity, Gas and Other Fuels	Furnishings Household Equipment and Routine Maintenance of the House	Health	Transport	Communication	Recreation and Culture	Education	Restaurants and Hotels	Misellaneous Goods and services	Month an Year
ታህሳስ 2009	100.0	100.0	100.0	100.0	100.0	100.0	100.0	100.0	100.0	100.0	100.0	100.0	100.0	100.0	December 2016
ሐምሌ 2009 - ሰኔ 2010	119.5	112.6	124.8	108.3	104.0	153.3	123.5	119.2	107.6	116.3	109.1	100.0	117.7	109.5	July 2017 - June 2018
ሐምሌ 2010 - ሰኔ 2011	137.0	129.4	142.7	121.1	116.7	179.8	144.9	134.6	117.2	118.6	113.4	119.6	138.8	125.8	July 2018 - June 2019
ሐምሌ 2011 - ሰኔ 2012	162.7	163.0	162.5	144.0	128.6	216.7	161.1	146.3	141.3	116.1	121.9	129.1	150.7	141.6	July 2019 - June 2020
2011															2018/2019
ሐምሌ 2010	131.0	123.8	136.5	113.8	112.0	171.7	137.9	132.6	110.0	116.8	112.4	100.1	134.1	121.4	July 2018
ነሐሴ 2010	131.2	123.7	137.0	116.8	113.5	170.7	136.3	126.3	113.4	116.8	112.6	113.2	136.0	122.5	August 2018
መስከረም 2011	134.1	128.1	138.7	114.8	115.9	172.0	135.3	131.3	117.4	116.8	112.3	126.7	138.2	123.3	September "
ጥቅምት 2011	132.5	122.7	139.9	117.4	116.0	171.7	141.8	139.0	117.5	121.1	111.5	124.2	138.2	120.9	October "
ሀዳር 2011	132.2	122.7	139.4	117.3	119.7	170.8	140.6	134.4	114.8	119.3	111.7	122.2	138.2	124.1	November "
ታህሳስ 2011	134.2	125.8	140.6	113.7	110.8	175.9	145.0	133.9	116.1	120.8	114.6	120.5	136.9	124.4	December "
ጥር 2011	136.5	126.4	144.2	117.8	116.6	183.8	147.4	136.1	116.2	122.7	114.1	121.7	136.9	126.4	January 2019
የካቲት 2011	136.6	126.9	144.0	130.3	115.2	184.1	146.0	136.1	118.7	117.5	111.9	119.2	136.9	126.4	February "
መጋቢት 2011	139.3	129.1	147.1	130.3	117.0	191.8	147.5	126.7	118.4	117.5	112.2	121.3	142.4	128.1	March "
ሚያዝያ 2011	141.2	132.8	147.6	128.2	120.9	188.6	151.4	139.8	120.4	117.5	112.4	124.1	142.4	127.5	April "
ግንቦት 2011	146.8	144.5	148.6	128.8	120.8	189.5	153.5	137.2	122.1	118.3	118.0	121.1	142.4	132.2	May "
ሰኔ 2011	147.7	146.8	148.4	124.2	121.6	186.9	155.7	141.9	122.0	118.3	116.6	120.5	143.9	132.4	June "
2012															2019/2020
ሐምሌ 2011	149.0	149.1	148.9	127.3	122.7	188.7	154.0	140.5	122.1	118.3	115.4	121.7	143.9	133.1	July 2019
ነሐሴ 2011	153.2	157.4	150.0	124.4	124.5	189.9	156.3	147.4	122.1	118.3	117.3	119.6	143.9	134.9	August 2019
መስከረም 2012	156.3	160.1	153.4	128.4	122.7	198.8	157.2	133.5	126.5	118.3	121.9	135.0	146.8	135.4	September "
ጥቅምት 2012	156.3	157.9	155.2	124.9	118.6	205.2	157.3	141.0	127.4	118.3	123.8	125.9	146.8	138.9	October "
ሀዳር 2012	156.1	156.3	156.0	121.5	121.3	206.5	160.3	133.0	125.3	118.3	131.3	133.9	146.8	140.1	November "
ታህሳስ 2012	157.8	157.1	158.4	129.2	124.2	210.3	162.5	141.1	125.1	113.7	120.4	125.4	154.6	141.5	December "
ጥር 2012	160.6	158.5	162.2	134.7	126.0	220.0	164.6	139.9	124.3	114.2	123.9	140.1	154.6	142.6	January 2020
የካቲት 2012	162.1	160.6	163.3	133.3	134.1	221.2	162.2	157.3	123.9	114.6	124.0	127.9	154.6	142.3	February "
መጋቢት 2012	166.7	163.5	169.2	181.2	134.7	236.0	164.9	154.1	124.8	114.9	125.3	128.3	153.0	146.2	March "
ሚያዝያ 2012	175.8	172.0	178.6	175.8	139.8	244.1	167.5	158.1	189.5	114.6	118.9	127.5	153.0	145.5	April "
ግንቦት 2012	177.7	176.0	178.9	172.3	136.9	246.3	165.2	161.4	189.9	114.8	121.0	128.4	153.0	146.2	May "
ሰኔ 2012	181.2	187.7	176.2	175.0	137.9	233.2	161.8	147.8	195.1	115.1	119.7	135.9	157.8	152.1	June "
2013															2019/2020
ሐምሌ 2012	186.1	196.8	177.9	183.6	150.8	235.5	165.4	158.1	190.8	113.9	122.6	117.2	157.8	149.6	July 2020
ነሐሴ 2012	186.9	197.5	178.9	175.7	147.0	235.5	167.1	162.1	200.4	115.2	122.4	105.6	157.8	156.5	August 2020
መስከረም 2013	186.0	198.8	176.3	178.9	150.3	238.5	164.7	167.8	153.9	115.9	121.2	131.4	159.0	156.3	September "
ጥቅምት 2013	187.1	199.2	177.9	174.9	153.7	240.5	169.3	162.1	150.8	115.3	132.0	145.1	159.0	159.1	October "
ሀዳር 2013	185.1	194.5	178.0	171.8	155.7	240.4	169.8	165.0	151.2	115.6	132.8	142.1	159.0	157.4	November "
ታህሳስ 2013	185.0	189.5	181.6	178.2	156.1	248.5	170.5	181.6	146.8	115.7	131.6	142.4	164.3	160.5	December "
ጥር 2013	188.6	193.7	184.6	178.2	160.5	251.6	174.3	189.4	154.0	115.1	131.8	150.9	164.3	161.1	January 2021
የካቲት 2013	193.0	201.9	186.3	182.2	165.2	251.3	182.6	180.3	155.4	115.1	131.2	146.4	164.3	168.9	February "
መጋቢት 2013	199.3	208.6	192.2	204.0	170.7	260.0	188.0	183.6	156.1	116.5	130.3	154.2	173.0	170.1	March "
ሚያዝያ 2013	203.7	215.8	194.5	206.6	172.5	261.5	197.5	184.9	158.4	116.7	132.9	150.0	173.0	174.7	April "



ወንጠረዥ 4U፤ ጠቅላላ የሽያጭ ዋጋ መመዘኛ ኢንዱስትሪ በሥራ የተካተቱ ክፍሎች ለአፋር ብሔራዊ ክልላዊ መንግስት  
 ታህሳስ 2009 = 100

Table 4a: General Consumer Price Index and Its Components for Afar National Regional State  
 December 2016 = 100

ወርና ዓመት	ጠቅላላ ኢንዱስትሪ	ምግብና አልኮሎል ያልሆኑ መጠጦች	ምግብ ነክ ያልሆኑ ኢንዱስትሪ	Non-food Consumer Price Index Components											ወርና ዓመት
				መጠጥ ሲጃራና ትምባሆ	ልብስና መጫጫ ያ	የቤት ኪራይ የቤት መሥሪያ ዕቃዎች ውሃ ነጻጅና ሃይል	የቤት ማስገጫዎች የቤት ቁሳቁስና የቤት ሠራተኛ ደሞዝ	ሀክምና	ትራንስፖርት	መገናኛ	መዝናኛና ባህል	ትምህርት	ሬስቶራንትና ሆቴሎች	ሌሎች ዕቃዎችና አገልግሎቶች	
Month an Year	General Index	Food and Non-Alcoholic Beverages	Non-Food Index	Alcoholic Beverages and Tobacco	Clothing and Footwear	Housing, Water, Electricity, Gas and Other Fuels	Furnishings Household Equipment and Routine Maintenance of the House	Health	Transport	Communication	Recreation and Culture	Education	Restaurants and Hotels	Misellaneous Goods and services	Month an Year
ታህሳስ 2009	100.0	100.0	100.0	100.0	100.0	100.0	100.0	100.0	100.0	100.0	100.0	100.0	100.0	100.0	December 2016
ሐምሌ 2009 - ሰኔ 2010	113.7	114.7	112.7	113.6	115.6	117.4	105.4	111.0	120.7	100.0	122.5	97.2	106.7	107.5	July 2017 - June 2018
ሐምሌ 2010 - ሰኔ 2011	124.4	127.7	121.3	102.4	125.5	127.0	141.6	97.3	124.5	102.7	165.1	110.7	120.2	121.9	July 2018 - June 2019
ሐምሌ 2011 - ሰኔ 2012	149.5	161.2	138.2	112.6	145.5	133.4	162.1	103.2	198.0	103.7	180.7	119.0	154.5	145.9	July 2019 - June 2020
2011															2018/2019
ሐምሌ 2010	120.4	122.1	118.8	124.6	125.5	118.3	115.9	109.8	123.3	100.9	131.3	100.0	113.4	116.9	July 2018
ነሐሴ 2010	120.2	123.3	117.1	114.9	123.6	118.3	117.6	108.9	109.9	100.3	132.5	100.0	117.0	120.2	August "
መስከረም 2011	121.6	127.1	116.2	105.5	124.3	116.8	116.4	108.6	123.3	100.3	133.8	105.6	121.2	119.4	September "
ጥቅምት 2011	122.3	125.8	118.9	107.3	118.7	118.4	145.0	93.5	127.6	100.3	183.8	115.1	121.2	123.3	October "
ሀዳር 2011	119.5	122.8	116.3	105.5	121.1	111.5	143.5	92.7	123.3	102.5	167.6	109.8	121.2	114.3	November "
ታህሳስ 2011	121.5	124.5	118.6	103.5	125.7	118.5	143.3	93.3	123.4	102.1	170.9	107.5	118.1	117.5	December "
ጥር 2011	124.1	126.8	121.4	103.3	123.0	127.3	149.5	91.8	123.3	103.4	177.3	114.4	118.1	120.6	January 2019
የከተት 2011	124.3	124.7	123.9	91.3	122.6	142.0	151.6	91.2	123.3	104.0	174.8	116.4	118.1	123.4	February "
መጋቢት 2011	124.3	126.7	122.0	86.2	123.9	135.5	154.9	92.3	123.3	104.6	176.1	114.4	116.4	124.9	March "
ሚያዝያ 2011	129.9	128.1	131.6	101.9	128.1	160.7	152.2	93.9	123.3	104.6	180.4	110.6	116.4	120.1	April "
ግንቦት 2011	130.9	138.1	123.9	93.3	136.8	127.8	156.6	94.9	123.3	104.3	175.4	115.9	116.4	133.0	May "
ሰኔ 2011	134.3	142.3	126.5	91.8	132.7	129.3	152.4	96.0	146.2	104.5	177.7	118.5	145.3	129.2	June "
2012															2019/2020
ሐምሌ 2011	137.4	146.4	128.7	93.4	134.4	129.5	152.9	96.6	173.3	102.8	166.5	118.5	145.3	142.5	July 2019
ነሐሴ 2011	139.5	151.9	127.5	91.9	134.2	126.8	152.2	103.9	164.3	103.5	160.9	118.5	145.3	139.2	August "
መስከረም 2012	144.5	156.9	132.6	100.5	136.2	135.6	153.8	108.1	173.3	104.0	167.0	107.3	146.1	141.4	September "
ጥቅምት 2012	148.9	161.0	137.2	104.3	136.0	151.0	158.1	98.0	173.3	103.1	170.0	116.7	146.1	139.9	October "
ሀዳር 2012	146.4	160.5	132.9	101.3	133.0	135.1	163.2	100.0	173.3	103.1	176.4	109.8	146.1	145.8	November "
ታህሳስ 2012	148.0	157.8	138.6	107.9	139.2	138.4	161.2	99.6	195.9	102.8	173.5	120.0	167.4	146.4	December "
ጥር 2012	149.3	155.7	143.1	108.9	150.4	143.4	163.5	97.5	218.4	102.8	189.6	121.9	167.4	144.7	January 2020
የከተት 2012	151.6	157.4	146.1	118.1	151.1	141.8	165.4	99.0	218.4	104.0	190.2	112.2	181.2	148.4	February "
መጋቢት 2012	152.3	162.9	142.1	123.0	161.6	122.0	166.8	132.7	218.4	104.0	196.5	121.9	147.8	151.0	March "
ሚያዝያ 2012	153.8	169.1	138.9	126.1	152.4	122.6	165.2	98.5	218.4	104.6	187.9	123.5	147.8	148.1	April "
ግንቦት 2012	156.7	175.4	138.6	137.3	147.5	122.9	167.6	100.4	173.3	104.6	188.7	121.5	147.8	152.0	May "
ሰኔ 2012	165.5	179.4	152.0	138.7	170.3	131.3	175.6	104.6	275.2	104.6	201.4	136.6	165.4	150.9	June "
2013															2019/2020
ሐምሌ 2012	172.4	177.4	167.5	185.9	167.6	165.5	173.1	102.2	275.2	104.6	191.7	136.6	165.4	147.8	July 2020
ነሐሴ 2012	170.1	182.2	158.3	132.9	166.4	152.4	169.8	100.1	346.7	104.6	187.9	141.4	165.4	154.3	August "
መስከረም 2013	170.0	179.9	160.3	159.3	170.3	140.3	168.9	117.0	346.7	104.6	188.8	144.9	166.2	150.0	September "
ጥቅምት 2013	169.8	187.9	152.3	126.8	169.4	147.8	170.1	117.5	218.4	104.6	193.3	146.6	166.2	146.1	October "
ሀዳር 2013	169.3	189.6	149.7	144.1	171.6	126.4	169.9	117.1	218.4	104.6	210.4	127.3	166.2	151.5	November "
ታህሳስ 2013	169.3	185.0	154.0	137.8	173.6	140.3	175.4	116.5	218.4	104.6	208.9	116.8	169.7	155.2	December "
ጥር 2013	168.6	184.4	153.3	148.1	170.0	136.5	174.5	138.2	173.3	104.6	220.8	114.7	166.2	162.8	January 2021
የከተት 2013	174.0	196.7	152.0	120.5	173.4	138.8	176.3	137.2	218.4	104.6	215.7	121.0	166.2	157.3	February "
መጋቢት 2013	180.2	205.6	155.6	149.5	171.9	133.8	179.1	133.5	218.4	104.6	219.4	120.4	172.4	161.7	March "
ሚያዝያ 2013	184.7	215.6	154.7	129.3	183.3	132.0	186.5	143.3	218.4	104.6	228.8	127.6	166.2	156.6	April "

ወንጠረዥ 50፤ ጠቅላላ የሽያጭ ዋጋ መመዘኛ ኢንዱስትሪ በሥራ የተካተቱ ክፍሎች ለአማራ ብሔራዊ አልዋ መንግስት  
 ታህሳስ 2009 = 100  
 Table 5a: General Consumer Price Index and Its Components for Amhara National Regional State  
 December 2016 = 100

ወርና ዓመት	ጠቅላላ ኢንዱስትሪ	ምግብና አልኮሎል ያልሆኑ መጠጦች	ምግብ ነክ ያልሆኑ ኢንዱስትሪ	Non-food Consumer Price Index Components											ወርና ዓመት
				መጠጥ ሲጃራና ትምባሆ	ልብስና መጫጫ ያ	የቤት ኪራይ የቤት መሥሪያ ዕቃዎች ውሃ ንግድና ሃይል	የቤት ማስገጫዎች የቤት ቁሳቁስና የቤት ሠራተኛ ደሞዝ	ሀክምና	ትራንስፖርት	መገናኛ ባህል	ጥቅምተኛ ባህል	ትምህርት	ሬስቶራንትና ሆቴሎች	ሌሎች ዕቃዎችና አገልግሎቶች	
Month an Year	General Index	Food and Non-Alcoholic Beverages	Non-Food Index	Alcoholic Beverages and Tobacco	Clothing and Footwear	Housing, Water, Electricity, Gas and Other Fuels	Furnishings Household Equipment and Routine Maintenance of the House	Health	Transport	Communication	Recreation and Culture	Education	Restaurants and Hotels	Misellaneous Goods and services	Month an Year
ታህሳስ 2009	100.0	100.0	100.0	100.0	100.0	100.0	100.0	100.0	100.0	100.0	100.0	100.0	100.0	100.0	December 2016
ሐምሌ 2009 - ሰኔ 2010	124.1	122.0	126.5	140.1	117.5	141.1	116.0	139.2	105.2	108.4	131.0	119.0	113.4	109.0	July 2017 - June 2018
ሐምሌ 2010 - ሰኔ 2011	138.9	138.2	139.7	144.8	140.9	152.3	134.7	174.7	117.8	125.4	141.7	124.4	122.0	122.3	July 2018 - June 2019
ሐምሌ 2011 - ሰኔ 2012	166.5	171.0	161.5	172.9	152.2	176.5	148.5	200.3	145.6	136.2	151.4	135.4	150.1	132.8	July 2019 - June 2020
2011															
ሐምሌ 2010	135.0	134.7	135.4	141.6	133.6	149.1	128.0	166.8	107.2	131.6	139.7	119.0	115.8	128.6	July 2018
ነሐሴ 2010	134.0	134.9	133.0	141.5	131.1	147.9	127.2	149.9	106.2	122.9	143.5	119.0	111.6	127.5	August "
መስከረም 2011	133.2	132.2	134.2	141.6	133.2	148.5	128.1	149.6	107.2	132.0	139.6	119.0	115.8	116.4	September "
ጥቅምት 2011	133.9	132.7	135.3	141.1	136.3	150.2	127.0	167.2	111.2	118.8	143.4	120.8	115.8	118.6	October "
ሀዳር 2011	133.5	132.4	134.7	142.0	139.5	146.7	127.7	168.5	116.4	117.7	141.8	124.2	115.8	117.9	November "
ታህሳስ 2011	136.1	133.4	139.0	140.2	143.0	150.6	134.8	179.2	120.6	109.4	141.6	116.7	124.4	120.9	December "
ጥር 2011	137.8	134.8	141.1	144.3	142.9	154.0	138.5	181.8	123.9	112.7	139.6	115.3	124.4	119.5	January 2019
የካቲት 2011	137.4	135.9	139.0	144.4	142.9	148.2	134.7	186.8	117.6	118.5	143.2	126.0	124.4	120.2	February "
መጋቢት 2011	140.0	139.2	140.8	148.1	143.6	146.8	139.3	221.3	126.8	123.1	143.4	123.5	125.5	121.6	March "
ሚያዝያ 2011	141.4	141.2	141.5	148.7	146.0	149.2	141.0	183.3	126.8	128.9	144.1	136.4	125.5	123.4	April "
ግንቦት 2011	151.3	151.4	151.1	153.2	150.4	170.5	143.5	183.2	128.2	145.5	142.5	136.6	125.5	127.5	May "
ሰኔ 2011	153.2	155.3	150.9	148.9	148.4	165.6	146.5	159.4	121.5	143.6	137.9	136.6	139.4	126.1	June "
2012															2019/2020
ሐምሌ 2011	154.1	158.1	149.6	145.3	150.8	160.8	147.5	176.3	123.1	141.7	137.8	136.6	139.4	125.4	July 2019
ነሐሴ 2011	159.1	163.4	154.3	146.3	151.3	172.2	144.5	203.3	119.1	138.1	145.9	136.6	139.4	130.6	August "
መስከረም 2012	159.6	162.7	156.1	149.7	143.1	175.3	141.5	200.1	119.4	132.2	148.7	130.8	149.2	127.7	September "
ጥቅምት 2012	156.8	157.3	156.3	148.6	147.3	175.3	145.4	192.1	120.2	130.1	142.4	135.0	147.8	128.6	October "
ሀዳር 2012	159.6	161.3	157.7	148.9	151.6	176.3	147.0	192.8	120.0	137.6	152.1	142.4	147.8	129.4	November "
ታህሳስ 2012	162.8	164.3	161.0	167.9	151.1	176.6	147.9	217.4	129.0	111.3	152.3	139.0	155.2	131.7	December "
ጥር 2012	163.5	166.4	160.3	169.1	151.3	173.4	147.9	199.2	149.2	111.3	173.4	121.2	155.2	130.4	January 2020
የካቲት 2012	171.0	174.3	167.3	178.6	152.7	185.6	150.2	206.7	147.9	120.5	161.7	129.9	160.2	132.9	February "
መጋቢት 2012	174.7	181.9	166.7	197.0	153.2	182.4	150.4	217.4	148.0	129.4	150.0	127.0	152.1	136.6	March "
ሚያዝያ 2012	176.0	184.2	166.8	215.6	157.1	176.6	150.5	202.7	161.6	134.4	155.7	141.0	152.1	136.1	April "
ግንቦት 2012	177.6	186.0	168.3	216.1	157.7	172.4	153.9	195.1	190.6	185.5	152.5	142.0	152.1	137.4	May "
ሰኔ 2012	183.5	192.2	173.7	191.9	158.8	191.0	155.8	200.1	218.5	161.9	143.7	143.1	150.2	146.4	June "
2013															2019/2020
ሐምሌ 2012	183.1	199.0	165.3	190.0	159.9	165.6	154.6	250.3	228.4	146.6	141.2	130.9	150.2	145.1	July 2020
ነሐሴ 2012	187.5	201.2	172.3	190.7	158.4	184.2	155.5	205.8	258.4	154.1	140.6	136.7	150.2	146.0	August "
መስከረም 2013	186.7	199.8	172.0	200.3	161.0	183.6	155.6	212.0	158.8	147.6	138.6	130.6	159.6	160.5	September "
ጥቅምት 2013	184.9	200.4	167.6	201.7	162.7	172.7	157.8	195.5	152.6	147.6	153.1	136.1	159.6	150.1	October "
ሀዳር 2013	186.2	198.6	172.2	204.8	165.4	187.7	156.8	184.8	137.2	134.4	159.7	138.3	159.6	149.3	November "
ታህሳስ 2013	186.7	194.7	177.7	215.1	167.2	187.5	160.2	239.9	142.0	134.4	165.5	140.6	171.7	152.1	December "
ጥር 2013	188.6	197.4	178.7	217.3	168.2	191.5	163.7	191.9	141.2	134.4	170.7	136.3	171.7	155.0	January 2021
የካቲት 2013	191.7	198.8	183.7	219.4	180.2	188.0	167.8	222.1	138.9	240.6	157.6	146.1	171.7	158.8	February "
መጋቢት 2013	195.8	201.5	189.5	240.5	181.8	186.0	176.9	215.9	158.6	270.0	167.5	151.3	181.6	162.9	March "
ሚያዝያ 2013	198.5	206.3	189.7	240.8	187.0	180.2	180.8	239.1	170.7	271.4	183.1	167.8	181.6	164.7	April "

ወንጠረዥ 6ሀ፤ ጠቅላላ የሽያጭ ዋጋ መመዘኛ ኢንዱስትሪ በሥራ የተካተቱ ክፍሎች ለቤተሰብ ብሔራዊ ክልላዊ መንግስት  
 ታህሳስ 2009 = 100

Table 6a: General Consumer Price Index and Its Components for Beneshangul-Gumuz National Regional State  
 December 2016 = 100

ወርና ዓመት	ጠቅላላ ኢንዱስትሪ	ምግብና አልኮሎል ያልሆኑ መጠጦች	ምግብ ነክ ያልሆኑ ኢንዱስትሪ	Non-food Consumer Price Index Components											ወርና ዓመት
				መጠጥ ሲጃራና ትምባሆ	ሰብስቦች ማጫማያ	የቤት ኪራይ የቤት መሥሪያ ሰዎች ውሃ ንዳጅና ሃይል	የቤት ማስገጫዎች የቤት ቁሳቁስና የቤት ሠራተኛ ደሞዝ	ህክምና	ትራንስፖርት	መገናኛ ባህሪ	መዝናኛና ጥራት	ትምህርት	ሬስቶራንትና ሆቴሎች	ሌሎች ስምጥሎች	
Month an Year	General Index	Food and Non-Alcoholic Beverages	Non-Food Index	Alcoholic Beverages and Tobacco	Clothing and Footwear	Housing, Water, Electricity, Gas and Other Fuels	Furnishings Household Equipment and Routine Maintenance of the House	Health	Transport	Communication	Recreation and Culture	Education	Restaurants and Hotels	Misellaneous Goods and services	Month an Year
ታህሳስ 2009	100.0	100.0	100.0	100.0	100.0	100.0	100.0	100.0	100.0	100.0	100.0	100.0	100.0	100.0	December 2016
ሐምሌ 2009 - ሰኔ 2010	116.1	120.1	112.4	101.0	97.6	101.4	126.4	129.7	119.0	100.0	168.5	100.0	135.1	109.4	July 2017 - June 2018
ሐምሌ 2010 - ሰኔ 2011	133.5	133.8	133.2	114.9	114.3	104.9	152.7	189.8	121.4	98.9	179.4	104.2	193.0	122.9	July 2018 - June 2019
ሐምሌ 2011 - ሰኔ 2012	165.7	173.8	158.0	156.0	135.2	126.5	172.1	193.3	133.5	100.0	230.5	118.8	228.4	151.1	July 2019 - June 2020
2011															2018/2019
ሐምሌ 2010	123.6	127.8	119.7	103.4	103.3	102.0	147.8	191.0	117.7	100.0	176.5	100.0	138.3	121.2	July 2018
ነሐሴ 2010	126.3	128.2	124.5	101.3	104.6	102.5	149.2	188.2	117.7	100.0	174.1	100.0	166.4	121.0	August "
መስከረም 2011	127.4	131.5	123.6	113.9	100.8	106.3	144.7	189.4	117.7	100.0	174.0	100.0	152.0	114.9	September "
ጥቅምት 2011	128.7	128.9	128.5	112.4	112.3	103.8	148.7	188.8	117.7	100.0	178.3	100.0	176.8	113.8	October "
ሀዳር 2011	127.8	128.0	127.6	110.7	114.4	99.4	145.9	195.8	117.7	100.0	174.1	100.0	176.8	119.1	November "
ታህሳስ 2011	133.6	133.6	133.5	107.9	117.5	101.8	147.9	188.4	121.7	93.5	180.3	100.0	208.4	120.4	December "
ጥር 2011	134.1	134.6	133.6	108.5	115.9	102.4	146.9	188.8	124.0	93.5	181.2	112.5	208.4	119.8	January 2019
የከተት 2011	134.9	132.8	136.9	117.9	119.0	105.2	153.6	189.6	120.3	100.0	178.9	112.5	208.4	121.2	February "
መጋቢት 2011	135.3	131.0	139.4	118.9	124.6	102.6	149.5	187.9	120.3	100.0	182.5	112.5	224.0	126.6	March "
ሚያዝያ 2011	139.5	135.3	143.5	121.0	127.2	109.4	161.5	189.3	122.6	100.0	176.9	112.5	224.0	130.6	April "
ግንቦት 2011	141.8	142.0	141.7	132.4	108.4	103.6	160.8	188.2	129.9	100.0	189.4	100.0	224.0	131.1	May "
ሰኔ 2011	148.9	151.3	146.6	130.2	123.4	119.2	175.5	192.3	129.9	100.0	187.0	100.0	208.4	134.7	June "
2012															2019/2020
ሐምሌ 2011	153.5	160.2	147.3	130.0	131.9	119.0	172.0	195.0	127.6	100.0	205.5	100.0	208.4	134.8	July 2019
ነሐሴ 2011	155.7	163.1	148.7	132.9	134.6	122.1	170.7	197.6	127.6	100.0	184.4	100.0	208.4	136.4	August "
መስከረም 2012	160.4	170.2	151.3	129.5	135.8	125.9	175.1	196.7	132.1	100.0	212.9	100.0	214.4	136.1	September "
ጥቅምት 2012	157.7	165.7	150.1	130.0	132.2	125.1	163.6	196.2	132.1	100.0	236.2	125.0	214.4	142.2	October "
ሀዳር 2012	159.6	169.5	150.3	130.0	132.8	127.3	163.5	171.0	132.1	100.0	258.8	125.0	214.4	149.8	November "
ታህሳስ 2012	159.3	164.9	154.1	143.7	131.9	119.2	167.4	193.4	132.1	100.0	248.8	125.0	230.1	154.6	December "
ጥር 2012	160.8	166.2	155.7	142.4	133.7	122.0	172.7	191.4	132.1	100.0	243.0	125.0	230.1	161.3	January 2020
የከተት 2012	167.5	173.9	161.6	152.1	136.1	136.3	177.1	192.4	132.1	100.0	238.7	125.0	230.1	159.0	February "
መጋቢት 2012	173.4	178.9	168.3	189.6	139.1	134.6	175.9	194.0	132.1	100.0	233.8	125.0	242.2	155.8	March "
ሚያዝያ 2012	174.1	182.0	166.7	188.2	134.2	129.4	178.9	196.9	132.1	100.0	235.1	125.0	242.2	158.3	April "
ግንቦት 2012	176.8	185.6	168.4	195.8	142.4	128.1	173.9	197.5	143.6	100.0	248.3	125.0	242.2	158.4	May "
ሰኔ 2012	188.9	205.2	173.7	207.4	137.2	128.7	174.2	197.1	145.9	100.0	220.6	125.0	264.2	166.2	June "
2013															2019/2020
ሐምሌ 2012	200.4	220.6	181.4	196.9	142.4	148.0	178.8	195.3	200.7	100.0	229.6	93.8	264.2	168.2	July 2020
ነሐሴ 2012	200.4	225.8	176.5	203.6	146.5	125.0	177.1	194.5	200.7	100.0	233.9	125.0	264.2	171.6	August "
መስከረም 2013	202.5	221.4	184.7	203.6	152.1	151.7	177.7	198.0	132.1	100.0	244.7	125.0	284.6	169.0	September "
ጥቅምት 2013	202.4	219.0	186.8	206.7	147.1	157.4	180.8	199.1	132.1	100.0	254.3	125.0	284.6	172.5	October "
ሀዳር 2013	205.4	228.9	183.4	213.6	151.5	140.0	181.6	197.3	133.0	100.0	271.6	125.0	284.6	169.0	November "
ታህሳስ 2013	202.2	213.6	191.6	211.8	149.8	161.9	186.8	200.0	133.0	100.0	280.1	125.0	294.7	170.1	December "
ጥር 2013	200.9	210.9	191.5	193.0	159.6	214.4	185.0	202.4	136.5	100.0	285.8	125.0	214.4	174.6	January 2021
የከተት 2013	199.5	219.6	180.7	185.9	167.2	168.7	195.7	202.3	140.5	100.0	278.9	125.0	214.4	188.9	February "
መጋቢት 2013	210.7	222.3	199.9	201.5	173.7	181.7	214.8	207.4	140.6	100.0	283.3	125.0	277.4	184.6	March "
ሚያዝያ 2013	210.6	223.6	198.4	193.1	173.3	177.2	218.8	210.2	140.6	100.0	302.6	125.0	277.4	189.0	April "

ወንጠረዥ 7፤ ጠቅላላ የሽያጭ ዋጋ መመዘኛ ኢንዱስትሪ በሥራ የተካተቱ ክፍሎች ለድሬዳዋ ከተማ አስተዳደር

ታህሳስ 2009 = 100

Table 7a: General Consumer Price Index and Its Components for Dire Dawa City Administration  
December 2016 = 100

ወርና ዓመት	ጠቅላላ ኢንዱስትሪ	ምግብና አልኮሎል ያልሆኑ መጠጦች	ምግብ ነክ ያልሆኑ ኢንዱስትሪ	Non-food Consumer Price Index Components											ወርና ዓመት
				መጠጥ ሲጃራና ትምባሆ	ልብና መጫጫ ያ	የቤት ኪራይ የቤት መሥሪያ ሰዎች ውሃ ንግድና ሃይል	የቤት ማስገጫዎች የቤት ቁሳቁስና የቤት ሠራተኛ ደሞዝ	ሀክምና	ትራንስፖርት	መገናኛ ቤታ	መዝናኛና ባህል	ትምህርት	ሬስቶራንትና ሆቴሎች	ሌሎች ሰዎችና አገልግሎቶች	
Month an Year	General Index	Food and Non-Alcoholic Beverages	Non-Food Index	Alcoholic Beverages and Tobacco	Clothing and Footwear	Housing, Water, Electricity, Gas and Other Fuels	Furnishings Household Equipment and Routine Maintenance of the House	Health	Transport	Communication	Recreation and Culture	Education	Restaurants and Hotels	Misellaneous Goods and services	Month an Year
ታህሳስ 2009	100.0	100.0	100.0	100.0	100.0	100.0	100.0	100.0	100.0	100.0	100.0	100.0	100.0	100.0	December 2016
ሐምሌ 2009 - ሰኔ 2010	110.8	113.5	108.9	110.4	123.7	106.3	111.2	98.9	97.6	100.0	117.6	103.1	108.1	104.3	July 2017 - June 2018
ሐምሌ 2010 - ሰኔ 2011	125.0	136.7	116.3	109.8	129.5	116.8	126.7	111.9	113.3	66.9	127.5	118.9	123.1	118.3	July 2018 - June 2019
ሐምሌ 2011 - ሰኔ 2012	150.7	171.8	135.0	137.3	157.1	135.2	146.8	132.5	134.7	60.2	128.9	148.4	132.1	132.8	July 2019 - June 2020
2011															2018/2019
ሐምሌ 2010	124.3	136.6	115.1	110.8	132.1	106.0	124.8	100.2	118.8	100.0	125.1	110.7	120.7	113.6	July 2018
ነሐሴ 2010	124.5	132.6	118.5	111.5	134.1	114.2	130.1	106.7	114.0	100.0	125.6	123.6	120.7	115.7	August "
መስከረም 2011	122.4	132.3	115.0	111.0	124.5	116.2	125.7	106.2	125.5	60.2	121.9	113.0	119.0	114.9	September "
ጥቅምት 2011	121.3	129.6	115.1	121.3	128.7	113.2	125.7	110.4	106.1	60.2	114.9	112.7	119.0	113.1	October "
ሀዳር 2011	117.9	129.2	109.4	87.1	124.8	114.1	123.6	106.7	107.8	60.2	115.9	112.8	119.0	115.6	November "
ታህሳስ 2011	120.9	128.6	115.2	111.0	131.4	116.2	126.2	106.8	107.8	60.2	116.6	112.7	122.6	116.6	December "
ጥር 2011	120.6	131.7	112.4	101.2	125.4	114.8	119.7	120.7	107.8	60.2	132.4	112.5	122.6	118.0	January 2019
የከተት 2011	124.0	133.5	116.9	114.2	125.4	118.8	126.4	115.2	119.7	60.2	132.6	112.5	122.6	118.8	February "
መጋቢት 2011	125.6	136.1	117.7	116.4	128.4	118.5	122.6	114.4	119.2	60.2	144.9	142.4	125.6	117.9	March "
ሚያዝያ 2011	128.7	141.9	118.8	115.8	131.6	123.3	126.0	116.5	107.3	60.2	126.7	122.1	125.6	121.0	April "
ግንቦት 2011	134.9	154.5	120.2	123.3	129.2	124.3	133.0	117.4	107.3	60.2	129.3	112.5	125.6	126.1	May "
ሰኔ 2011	135.3	154.3	121.1	101.0	138.4	122.0	137.0	121.1	118.8	60.2	143.8	139.0	133.9	128.1	June "
2012															2019/2020
ሐምሌ 2011	136.9	157.0	122.0	97.7	140.4	130.5	134.0	117.4	120.7	60.2	125.7	143.1	133.9	124.4	July 2019
ነሐሴ 2011	140.7	162.5	124.3	103.1	141.5	134.6	136.9	118.7	114.9	60.2	125.7	148.8	133.9	127.0	August "
መስከረም 2012	143.3	168.3	124.7	113.2	144.0	124.6	145.2	125.0	108.8	60.2	132.3	148.8	132.1	127.0	September "
ጥቅምት 2012	149.2	177.6	128.0	114.7	151.8	129.0	146.8	134.3	108.8	60.2	127.1	158.6	132.1	132.9	October "
ሀዳር 2012	146.3	168.7	129.5	122.6	152.7	127.9	143.1	135.8	123.1	60.2	129.3	151.5	132.1	135.1	November "
ታህሳስ 2012	147.4	163.3	135.5	141.9	158.9	140.6	149.8	129.4	108.8	60.2	130.2	147.4	119.2	136.6	December "
ጥር 2012	148.2	161.3	138.4	160.0	155.8	144.9	146.0	134.8	107.8	60.2	128.5	151.5	119.2	135.3	January 2020
የከተት 2012	150.6	166.6	138.7	155.7	168.3	141.2	149.1	136.7	108.8	60.2	124.3	140.4	119.2	135.2	February "
መጋቢት 2012	153.1	173.9	137.6	143.7	169.9	134.8	150.2	145.8	108.8	60.2	135.8	154.2	137.8	135.0	March "
ሚያዝያ 2012	159.7	178.5	145.6	163.1	166.0	136.6	151.9	140.8	200.4	60.2	134.8	142.1	137.8	130.7	April "
ግንቦት 2012	163.4	186.3	146.2	162.3	168.1	136.7	153.0	133.5	202.9	60.2	125.3	142.9	137.8	136.3	May "
ሰኔ 2012	170.2	197.4	149.9	169.5	167.8	140.5	155.8	137.2	202.2	60.2	127.5	151.1	149.9	138.1	June "
2013															2019/2020
ሐምሌ 2012	188.4	225.1	161.0	192.8	168.8	140.5	159.4	144.5	313.3	60.2	126.2	151.1	149.9	140.9	July 2020
ነሐሴ 2012	181.4	213.2	157.6	147.5	170.0	144.4	160.8	141.0	360.6	60.2	129.2	149.4	149.9	135.0	August "
መስከረም 2013	175.6	211.3	149.0	159.0	159.2	144.8	153.0	155.9	211.1	60.2	140.3	148.6	155.8	133.2	September "
ጥቅምት 2013	173.2	207.6	147.4	150.1	151.3	144.2	149.3	164.2	211.4	60.2	148.2	161.0	155.8	145.4	October "
ሀዳር 2013	171.9	201.8	149.7	167.0	156.6	143.3	154.2	165.7	211.1	60.2	136.7	169.6	155.8	128.4	November "
ታህሳስ 2013	172.5	202.8	150.0	156.4	156.1	142.2	158.3	176.7	211.1	60.2	142.3	167.2	168.9	133.0	December "
ጥር 2013	174.3	209.2	148.3	161.0	158.4	142.7	158.6	172.6	168.6	60.2	149.4	155.3	168.9	130.0	January 2021
የከተት 2013	178.3	213.8	151.9	177.8	160.9	140.2	165.5	179.4	168.6	60.2	153.1	155.3	168.9	131.5	February "
መጋቢት 2013	183.5	223.3	153.7	172.8	161.2	146.5	173.9	178.1	168.6	60.2	152.3	155.3	165.8	132.9	March "
ሚያዝያ 2013	183.3	222.1	154.3	164.4	168.0	145.1	180.7	163.8	168.6	60.2	175.2	169.6	165.8	135.2	April "

ወንጠረዥ 8፤ ጠቅላላ የሽያጭ ዋጋ መመዘኛ ኢንዱስትሪ በሥራ የተካተቱ ክፍሎች ለጋምቤላ ብሔራዊ ክልላዊ መንግስት  
 ታህሳስ 2009 = 100

Table 8a: General Consumer Price Index and Its Components for Gambella National Regional State  
 December 2016 = 100

ወርና ዓመት	ጠቅላላ ኢንዱስትሪ	ምግብና አልኮሎል ያልሆኑ ጠቀሞች	ምግብ ነክ ያልሆኑ ኢንዱስትሪ	Non-food Consumer Price Index Components											ወርና ዓመት
				መጠጥ ሲጃራና ትምባሆ	ሰብስቦ መጫጫ ያ	የቤት ኪራይ የቤት መሥሪያ ዕቃዎች ውሃ ንዳጅና ሃይል	የቤት ማስገጫዎች የቤት ቁሳቁስና የቤት ሠራተኛ ደሞዝ	ሀክምና	ትራንስፖርት	መገናኛ ባህሪ	ጥቅምተኛ ባህሪ	ጥምህርት	ሬስቶራንትና ሆቴሎች	ሌሎች ዕቃዎችና አገልግሎቶች	
Month an Year	General Index	Food and Non-Alcoholic Beverages	Non-Food Index	Alcoholic Beverages and Tobacco	Clothing and Footwear	Housing, Water, Electricity, Gas and Other Fuels	Furnishings Household Equipment and Routine Maintenance of the House	Health	Transport	Communication	Recreation and Culture	Education	Restaurants and Hotels	Misellaneous Goods and services	Month an Year
ታህሳስ 2009	100.0	100.0	100.0	100.0	100.0	100.0	100.0	100.0	100.0	100.0	100.0	100.0	100.0	100.0	December 2016
ሐምሌ 2009 - ሰኔ 2010	110.2	112.9	107.1	129.7	119.9	99.0	115.5	84.7	115.8	104.2	123.9	100.0	114.8	98.5	July 2017 - June 2018
ሐምሌ 2010 - ሰኔ 2011	123.2	129.8	115.6	140.0	132.4	99.4	134.1	96.4	135.3	104.7	126.5	106.9	145.2	106.1	July 2018 - June 2019
ሐምሌ 2011 - ሰኔ 2012	148.4	159.4	135.7	187.5	152.4	121.2	145.1	104.8	145.2	111.3	144.4	152.6	158.5	115.8	July 2019 - June 2020
2011															2018/2019
ሐምሌ 2010	124.6	129.0	119.6	135.6	127.7	112.5	121.0	95.6	134.4	119.6	126.1	100.0	142.7	101.6	July 2018
ነሐሴ 2010	122.0	127.5	115.8	125.6	134.6	104.1	128.8	92.2	134.4	113.6	132.1	100.0	142.7	103.5	August "
መስከረም 2011	120.7	127.0	113.6	126.3	131.4	98.0	133.9	99.8	134.7	112.4	132.1	100.0	142.3	104.2	September "
ጥቅምት 2011	120.1	124.4	115.2	127.4	130.7	102.4	131.2	95.2	134.7	112.4	125.9	102.2	142.3	104.9	October "
ሀዳር 2011	118.0	125.6	109.2	129.6	132.9	89.9	131.7	88.5	134.3	106.4	127.5	104.3	142.3	102.4	November "
ታህሳስ 2011	120.6	124.9	115.7	145.1	136.8	98.4	132.6	86.5	134.4	110.6	127.5	104.4	145.8	107.1	December "
ጥር 2011	119.4	125.2	112.6	141.0	131.3	93.0	134.0	87.8	135.6	111.8	127.5	110.3	145.8	104.3	January 2019
የከተት 2011	120.9	128.7	112.0	143.1	130.4	91.0	138.8	98.8	135.6	90.9	113.6	133.3	145.8	106.3	February "
መጋቢት 2011	124.5	133.3	114.5	150.4	130.7	95.2	141.1	81.8	136.9	90.9	127.5	107.5	146.3	107.8	March "
ሚያዝያ 2011	124.4	130.2	117.7	151.9	130.8	102.0	135.6	101.4	135.6	90.9	124.5	107.0	146.3	105.9	April "
ግንቦት 2011	129.5	140.2	117.2	151.4	133.0	101.4	134.1	79.9	136.7	98.2	124.3	107.0	146.3	110.9	May "
ሰኔ 2011	133.2	141.4	123.8	152.2	138.8	105.0	146.1	149.2	136.0	98.2	129.0	107.0	153.4	114.1	June "
2012															2019/2020
ሐምሌ 2011	136.7	148.7	122.9	156.8	144.2	104.3	138.8	121.8	138.0	98.2	129.0	130.5	153.4	117.3	July 2019
ነሐሴ 2011	138.4	150.1	125.0	154.3	145.6	104.0	142.6	149.7	161.7	98.2	127.5	133.3	153.4	113.7	August "
መስከረም 2012	141.6	148.8	133.4	156.1	143.5	121.3	148.3	121.2	149.6	98.2	136.5	166.0	165.5	118.0	September "
ጥቅምት 2012	139.4	149.7	127.5	154.7	141.6	112.4	145.2	120.9	130.9	98.2	142.4	157.3	165.5	113.8	October "
ሀዳር 2012	138.0	144.6	130.4	154.4	152.9	118.8	143.7	104.0	130.9	109.0	152.3	163.3	165.5	103.5	November "
ታህሳስ 2012	141.9	148.6	134.2	151.5	163.8	124.6	147.5	90.7	130.9	109.0	154.3	156.0	165.8	118.0	December "
ጥር 2012	143.4	152.5	133.0	161.8	152.7	122.5	140.0	90.2	130.9	117.7	154.3	163.3	165.8	115.8	January 2020
የከተት 2012	149.7	158.6	139.5	175.7	156.7	127.9	141.8	87.6	172.2	120.0	160.0	169.7	165.8	117.9	February "
መጋቢት 2012	153.9	166.7	139.2	233.9	149.5	121.7	138.1	90.1	150.7	127.3	142.3	156.0	149.7	116.1	March "
ሚያዝያ 2012	167.0	183.4	148.1	233.9	157.9	136.2	150.9	86.4	151.9	127.3	145.1	163.3	149.7	121.8	April "
ግንቦት 2012	160.6	175.0	144.2	252.5	158.4	124.3	153.0	86.9	147.1	120.0	144.6	136.1	149.7	124.1	May "
ሰኔ 2012	169.6	185.6	151.1	264.1	161.5	136.7	151.7	108.6	147.2	112.8	144.6	136.1	152.5	109.9	June "
2013															2019/2020
ሐምሌ 2012	174.1	186.7	159.6	275.5	155.4	148.9	154.2	122.8	174.6	112.8	142.3	136.1	152.5	108.8	July 2020
ነሐሴ 2012	173.0	195.5	147.0	265.2	156.2	125.5	147.9	103.6	175.3	120.0	144.6	136.1	152.5	112.9	August "
መስከረም 2013	174.0	194.1	150.7	269.2	161.5	131.4	148.5	107.4	177.0	112.8	151.2	166.0	153.7	114.3	September "
ጥቅምት 2013	172.7	189.1	153.8	269.6	163.7	134.6	152.3	123.5	177.4	120.0	151.3	163.3	153.7	117.7	October "
ሀዳር 2013	175.1	194.3	153.0	261.6	167.6	132.2	151.3	127.5	185.7	120.0	208.7	163.3	153.7	118.6	November "
ታህሳስ 2013	173.1	188.4	155.4	265.0	162.5	136.7	151.0	102.6	177.4	116.2	213.6	156.0	177.0	113.6	December "
ጥር 2013	179.1	193.6	162.5	278.3	163.0	144.3	152.5	124.8	194.3	120.0	216.6	163.3	177.0	118.3	January 2021
የከተት 2013	183.1	203.6	159.6	282.7	168.7	132.4	163.1	126.8	196.0	127.3	218.2	156.0	177.0	123.5	February "
መጋቢት 2013	191.5	212.8	167.0	290.7	176.7	141.2	174.3	133.6	195.0	127.3	216.6	184.4	181.3	128.7	March "
ሚያዝያ 2013	191.0	214.8	163.5	283.0	182.3	130.4	191.5	138.0	195.0	127.3	222.7	184.4	181.3	126.9	April "

ወንጌላ ገቢ ጠቅላላ የሽያጭ ዋጋ መመዘኛ ለንደክስና በሥራ የተካተቱ ክፍሎች ለሐረር ብሔራዊ ክልላዊ መንግስት  
 ታህሳስ 2009 = 100

Table 9a: General Consumer Price Index and Its Components for Harari National Regional State  
 December 2016 = 100

ወርና ዓመት	ጠቅላላ ኢንዱክስ	ምግብና አልኮሎል ያልሆኑ መጠጦች	ምግብ ነክ ያልሆኑ ኢንዱክስ	Non-food Consumer Price Index Components											ወርና ዓመት
				መጠጦ ሲጃራና ትምባሆ	ልብና መጫጫ ያ	የቤት ኪራይ የቤት መሥሪያ ዕቃዎች ውሃ ንዳጅና ሃይል	የቤት ማስገጫዎች የቤት ቁሳቁስና የቤት ሠራተኛ ደሞዝ	ህክምና	ትራንስፖርት	መገናኛ	መዝናኛና ባህል	ትምህርት	ሬስቶራንትና ሆቴሎች	ሌሎች ዕቃዎችና አገልግሎቶች	
Month an Year	General Index	Food and Non-Alcoholic Beverages	Non-Food Index	Alcoholic Beverages and Tobacco	Clothing and Footwear	Housing, Water, Electricity, Gas and Other Fuels	Furnishings Household Equipment and Routine Maintenance of the House	Health	Transport	Communication	Recreation and Culture	Education	Restaurants and Hotels	Misellaneous Goods and services	Month an Year
ታህሳስ 2009	100.0	100.0	100.0	100.0	100.0	100.0	100.0	100.0	100.0	100.0	100.0	100.0	100.0	100.0	December 2016
ሐምሌ 2009 - ሰኔ 2010	109.0	111.9	106.9	107.4	112.5	97.8	112.8	109.0	106.4	100.0	112.8	114.3	110.8	106.2	July 2017 - June 2018
ሐምሌ 2010 - ሰኔ 2011	121.4	128.0	116.8	105.9	125.3	110.8	130.4	113.0	126.1	100.0	113.3	147.8	125.4	124.9	July 2018 - June 2019
ሐምሌ 2011 - ሰኔ 2012	150.5	161.5	142.8	127.2	138.9	151.9	135.5	139.7	194.0	100.0	136.7	139.2	162.9	137.9	July 2019 - June 2020
2011															2018/2019
ሐምሌ 2010	115.6	124.9	109.0	89.2	124.8	105.8	128.5	111.1	111.6	100.0	113.2	127.7	117.6	115.8	July 2018
ነሐሴ 2010	114.9	123.9	108.7	91.3	115.6	107.2	126.1	111.4	111.6	100.0	108.6	128.6	118.7	116.6	August "
መስከረም 2011	117.6	121.6	114.9	100.9	123.7	108.9	131.3	110.1	111.6	100.0	109.5	150.5	128.9	118.5	September "
ጥቅምት 2011	116.9	122.9	112.7	92.4	125.1	109.1	124.7	112.1	111.6	100.0	114.0	152.2	128.9	118.2	October "
ሀዳር 2011	117.1	123.8	112.4	91.8	122.4	107.6	132.2	111.9	111.6	100.0	112.9	151.1	128.9	117.6	November "
ታህሳስ 2011	118.3	124.2	114.2	104.2	123.0	108.7	125.4	113.5	130.5	100.0	111.0	152.0	117.3	124.7	December "
ጥር 2011	121.8	126.9	118.3	113.5	128.7	112.7	127.3	111.5	141.4	100.0	114.2	152.8	117.3	121.4	January 2019
የከተት 2011	121.6	124.5	119.6	114.7	129.7	117.2	129.1	111.1	132.0	100.0	110.5	151.7	117.3	127.4	February "
መጋቢት 2011	123.6	126.3	121.8	119.1	126.7	113.4	131.1	107.6	132.0	100.0	109.1	152.3	129.0	134.0	March "
ሚያዝያ 2011	124.2	131.9	118.9	108.7	125.8	106.2	139.9	109.3	139.8	100.0	113.9	152.6	129.0	134.2	April "
ግንቦት 2011	130.5	140.8	123.2	119.3	125.8	114.0	136.3	122.1	139.8	100.0	121.2	150.6	129.0	134.3	May "
ሰኔ 2011	134.9	143.8	128.6	125.3	132.2	119.1	133.1	124.7	139.8	100.0	121.3	151.3	142.7	136.4	June "
2012															2019/2020
ሐምሌ 2011	135.7	144.6	129.4	131.4	134.0	114.7	133.2	117.5	150.0	100.0	120.6	150.6	142.7	133.8	July 2019
ነሐሴ 2011	142.2	155.2	133.1	144.2	134.8	116.6	132.5	124.5	150.0	100.0	121.0	148.6	142.7	134.7	August "
መስከረም 2012	149.1	161.8	140.3	124.2	141.7	156.6	134.6	129.6	150.0	100.0	123.8	148.6	157.7	131.9	September "
ጥቅምት 2012	147.0	162.6	136.0	109.2	134.2	158.4	133.6	132.8	150.0	100.0	130.0	140.0	157.7	128.3	October "
ሀዳር 2012	143.7	159.5	132.7	100.2	136.2	148.5	131.1	140.8	150.0	100.0	142.5	131.1	157.7	141.7	November "
ታህሳስ 2012	147.0	157.8	139.4	108.7	138.4	160.4	131.9	145.4	150.0	100.0	142.3	141.6	169.4	130.8	December "
ጥር 2012	149.5	158.5	143.2	116.4	139.9	169.5	129.4	144.4	150.0	100.0	141.6	140.4	169.4	135.4	January 2020
የከተት 2012	151.1	159.3	145.3	117.4	140.8	170.6	136.5	143.9	168.1	100.0	142.8	141.2	169.4	142.5	February "
መጋቢት 2012	154.8	159.9	151.2	152.9	141.3	158.1	136.1	146.5	150.0	100.0	147.1	137.7	173.2	141.5	March "
ሚያዝያ 2012	156.9	166.1	150.6	139.1	136.0	160.3	137.5	146.0	228.1	100.0	140.3	136.2	173.2	144.2	April "
ግንቦት 2012	159.5	170.6	151.7	133.3	147.5	152.6	137.9	147.1	308.9	100.0	143.9	136.2	173.2	136.7	May "
ሰኔ 2012	169.7	182.3	160.8	149.7	141.4	157.0	151.4	157.8	423.3	100.0	144.5	118.6	168.5	153.2	June "
2013															2019/2020
ሐምሌ 2012	177.6	190.3	168.7	177.7	144.0	162.4	152.1	152.6	423.3	100.0	141.1	118.6	168.5	152.1	July 2020
ነሐሴ 2012	179.6	190.7	171.9	176.6	143.7	180.7	151.8	157.7	423.3	100.0	116.4	117.4	168.5	156.0	August "
መስከረም 2013	178.1	188.2	171.1	171.0	141.3	173.4	151.5	160.1	423.3	100.0	132.1	151.9	174.0	165.1	September "
ጥቅምት 2013	177.3	195.0	164.9	143.9	143.4	192.9	157.4	148.2	308.9	100.0	131.1	149.2	174.0	165.1	October "
ሀዳር 2013	178.9	192.7	169.2	181.9	137.1	183.6	153.4	164.3	228.1	100.0	140.0	163.6	174.0	171.2	November "
ታህሳስ 2013	182.9	189.5	178.4	202.5	133.4	194.1	153.4	169.1	239.0	100.0	137.4	153.4	188.6	167.3	December "
ጥር 2013	178.9	191.2	170.3	181.4	145.1	185.1	153.2	169.5	228.1	100.0	137.6	161.1	174.0	169.4	January 2021
የከተት 2013	182.6	191.5	176.4	192.6	143.3	202.6	154.7	184.7	207.5	100.0	143.7	145.9	174.0	180.0	February "
መጋቢት 2013	185.2	196.8	177.1	154.9	146.2	223.0	156.7	165.4	240.3	100.0	141.1	148.3	198.0	185.3	March "
ሚያዝያ 2013	182.7	194.2	174.7	178.3	163.2	185.9	166.5	184.8	240.3	100.0	147.9	167.2	174.0	182.3	April "



ወንጠረዥ 11ሀ፤ ጠቅላላ የሽያጭ ዋጋ መመዘኛ ለጋራ የተካተቱ ክፍሎች ለደቡብ ብሔራዊ ክልላዊ መንግሥት ታህሳስ 2009 = 100

Table 11a: General Consumer Price Index and Its Components for SNNP National Regional State December 2016 = 100

ወርና ዓመት	ጠቅላላ ለጋራ ክፍል	ምግብና አልኮሎል ያልሆኑ መጠጦች	ምግብ ነክ ያልሆኑ ለጋራ ክፍል	ምግብ ነክ ያልሆኑ ይህን ይህን ክፍሎች											ወርና ዓመት
				መጠጦች ለጋራ ትምህርት	ሰጠና መጫማ	የቤት ቢራይ የቤት መሥሪያ ስቃዎች ውሃ ንግድና ሃይል	የቤት ማስገጫዎች የቤት ቁሳቁስና የቤት ሠራተኛ ደሞዝ	ህክምና	ትራንስፖርት	መገናኛ ባህሪ	መዝናኛና ባህሪ	ትምህርት	ሬስቶራንትና ሆቴሎች	ሌሎች ስቃዎችና አገልግሎቶች	
Month an Year	General Index	Food and Non-Alcoholic Beverages	Non-Food Index	Alcoholic Beverages and Tobacco	Clothing and Footwear	Housing, Water, Electricity, Gas and Other Fuels	Furnishings Household Equipment and Routine Maintenance of the House	Health	Transport	Communication	Recreation and Culture	Education	Restaurants and Hotels	Misellaneous Goods and services	Month an Year
ታህሳስ 2009	100.0	100.0	100.0	100.0	100.0	100.0	100.0	100.0	100.0	100.0	100.0	100.0	100.0	100.0	December 2016
ሐምሌ 2009 - ሰኔ 2010	117.8	120.5	114.3	108.4	112.2	114.0	128.8	111.3	109.7	100.2	119.1	112.8	118.7	110.9	July 2017 - June 2018
ሐምሌ 2010 - ሰኔ 2011	129.5	132.1	126.1	124.1	127.5	120.0	147.5	120.2	119.6	72.5	129.1	129.3	140.2	127.9	July 2018 - June 2019
ሐምሌ 2011 - ሰኔ 2012	160.3	164.5	154.9	141.3	127.8	166.4	158.2	129.0	148.5	70.6	146.4	136.6	165.2	147.3	July 2019 - June 2020
2011															2018/2019
ሐምሌ 2010	126.8	129.3	123.5	114.4	121.5	123.9	142.1	114.3	114.2	101.0	123.3	113.4	133.1	119.3	July 2018
ነሐሴ 2010	126.5	129.6	122.6	115.5	122.5	119.2	143.6	117.1	119.4	101.6	124.7	113.7	133.1	121.6	August "
መስከረም 2011	126.9	129.6	123.3	119.2	124.2	119.6	144.8	116.9	113.3	64.5	128.5	131.5	136.7	124.4	September "
ጥቅምት 2011	125.9	128.6	122.3	119.4	125.4	117.0	143.8	119.6	115.3	64.8	126.0	130.5	136.7	122.4	October "
ሀዳር 2011	126.0	128.8	122.5	121.1	127.3	115.1	145.2	119.3	117.4	64.9	128.5	133.4	136.7	126.3	November "
ታህሳስ 2011	126.2	128.2	123.6	122.6	127.1	116.7	145.8	120.5	115.9	65.4	129.8	129.9	139.5	125.9	December "
ጥር 2011	127.0	128.0	125.8	125.2	129.9	118.6	148.7	118.7	117.9	66.3	128.1	130.7	139.5	127.5	January 2019
የከተማ 2011	127.8	128.5	127.0	127.6	130.2	117.9	150.2	123.2	118.7	68.0	130.8	132.0	139.5	129.5	February "
መጋቢት 2011	130.1	130.5	129.5	132.6	129.7	121.5	149.2	126.5	122.5	68.1	131.2	129.0	144.9	130.9	March "
ሚያዝያ 2011	133.5	135.8	130.5	132.5	130.6	122.1	152.1	123.2	127.7	67.9	132.7	132.4	144.9	132.4	April "
ግንቦት 2011	138.3	143.4	131.7	129.9	130.8	126.0	151.7	118.6	127.1	66.9	133.6	135.8	144.9	135.4	May "
ሰኔ 2011	139.2	145.4	131.2	128.7	130.3	122.3	152.2	124.8	125.9	70.8	131.4	139.2	152.7	138.9	June "
2012															2019/2020
ሐምሌ 2011	143.5	150.2	134.8	129.5	131.7	129.5	153.3	124.6	130.4	72.0	135.5	140.8	152.7	137.2	July 2019
ነሐሴ 2011	145.3	152.2	136.4	128.5	131.6	129.7	154.8	121.1	129.2	75.4	137.1	139.3	152.7	138.7	August "
መስከረም 2012	150.1	157.1	141.1	134.0	121.9	136.0	156.9	129.6	143.4	72.1	138.1	139.7	162.2	145.0	September "
ጥቅምት 2012	152.4	160.2	142.3	133.1	124.4	141.4	156.4	126.2	143.2	71.3	147.5	136.0	162.2	143.4	October "
ሀዳር 2012	153.5	160.0	145.2	124.3	123.1	150.3	157.7	122.6	141.3	70.1	151.3	134.5	162.2	143.9	November "
ታህሳስ 2012	156.1	156.5	155.6	134.0	124.9	171.2	158.6	135.9	137.4	70.4	149.1	140.6	165.6	145.4	December "
ጥር 2012	157.6	157.4	157.8	124.9	127.4	177.8	162.2	127.0	139.9	67.6	148.1	141.3	165.6	147.6	January 2020
የከተማ 2012	162.7	162.5	162.8	117.9	126.7	191.0	157.9	128.8	139.7	69.1	148.0	136.3	165.6	149.7	February "
መጋቢት 2012	164.9	168.4	160.3	161.2	128.5	174.5	159.2	132.4	145.1	70.3	148.4	127.5	172.0	152.1	March "
ሚያዝያ 2012	175.2	179.3	170.0	168.6	132.2	193.4	161.1	133.4	150.2	69.5	149.3	136.7	172.0	155.4	April "
ግንቦት 2012	180.5	183.1	177.2	167.8	130.1	203.8	158.6	135.4	187.9	71.3	154.8	135.5	172.0	156.5	May "
ሰኔ 2012	182.0	186.9	175.6	172.3	131.1	197.9	161.8	130.6	193.7	68.2	149.8	131.2	177.2	152.4	June "
2013															2019/2020
ሐምሌ 2012	184.3	191.2	175.3	173.8	133.2	195.1	163.4	135.1	197.7	70.0	152.0	128.3	177.2	154.9	July 2020
ነሐሴ 2012	190.1	195.9	182.6	173.3	135.7	209.0	163.4	137.4	212.4	70.9	149.9	116.7	177.2	155.6	August "
መስከረም 2013	195.4	201.3	187.7	169.1	135.8	218.2	165.3	135.4	205.6	70.3	149.5	140.7	183.9	159.3	September "
ጥቅምት 2013	193.6	204.2	179.9	170.0	138.0	206.6	165.5	141.0	166.8	69.0	152.3	146.7	183.9	159.9	October "
ሀዳር 2013	194.4	203.2	183.1	171.7	138.7	213.2	163.2	136.8	175.4	72.0	167.5	143.0	183.9	160.4	November "
ታህሳስ 2013	193.1	199.4	185.0	177.1	140.1	212.6	165.7	144.9	173.2	70.6	177.5	143.2	188.4	165.7	December "
ጥር 2013	196.9	203.4	188.5	174.6	145.3	215.8	168.6	148.1	188.9	73.1	176.0	148.3	188.4	170.6	January 2021
የከተማ 2013	209.2	212.3	205.0	184.7	146.5	234.9	179.9	141.0	285.6	72.5	177.0	146.9	188.4	170.2	February "
መጋቢት 2013	215.1	219.0	210.0	190.8	150.6	236.7	192.2	150.5	284.0	70.6	186.0	150.7	204.9	179.0	March "
ሚያዝያ 2013	218.5	230.9	202.5	188.9	154.9	227.2	203.2	153.4	212.4	73.3	192.3	150.6	204.9	177.9	April "





ወንጌላ ገቢ 13ሀ፤ ጠቅላላ የሽያጭ ዋጋ መመዘኛ ለጎደክስና በሥሩ የተካተቱ ክፍሎች ለትግራይ ብሔራዊ ክልላዊ መንግስት  
 ታህሳስ 2009 = 100

Table 13a: General Consumer Price Index and Its Components for Tigray National Regional State  
 December 2016 = 100

ወርና ዓመት	ጠቅላላ ለጎደክስ	ምግብና አልኮሎል ያልሆኑ መጠቀሻዎች	ምግብ ነክ ያልሆኑ ለጎደክስ	ምግብ ነክ ያልሆኑ ይላጎደክስ ክፍሎች Non-food Consumer Price Index Components												ወርና ዓመት
				መጠጥ ሲጃራና ትምባሆ	ልብስና መጫጫ ያ	የቤት ኪራይ የቤት መሥሪያ ስቃዎች ውሃ ንዳጅና ሃይል	የቤት ማስገጫዎች የቤት ቁሳቁስና የቤት ሠራተኛ ደሞዝ	ህክምና	ትራንስፖርት	መገናኛ	መዝናኛና ባህል	ትምህርት	ሬስቶራንትና ሆቴሎች	ሌሎች ስቃዎችና አገልግሎቶች		
Month an Year	General Index	Food and Non-Alcoholic Beverages	Non-Food Index	Alcoholic Beverages and Tobacco	Clothing and Footwear	Housing, Water, Electricity, Gas and Other Fuels	Furnishings Household Equipment and Routine Maintenance of the House	Health	Transport	Communication	Recreation and Culture	Education	Restaurants and Hotels	Misellaneous Goods and services	Month an Year	
ታህሳስ 2009	100.0	100.0	100.0	100.0	100.0	100.0	100.0	100.0	100.0	100.0	100.0	100.0	100.0	100.0	December 2016	
ሐምሌ 2009 - ሰኔ 2010	114.0	118.0	110.6	107.1	105.6	111.0	108.5	108.0	109.5	100.0	83.8	89.2	120.4	109.2	July 2017 - June 2018	
ሐምሌ 2010 - ሰኔ 2011	136.5	145.4	128.9	124.1	123.4	132.0	126.8	133.1	112.2	100.0	93.2	109.5	144.1	123.5	July 2018 - June 2019	
ሐምሌ 2011 - ሰኔ 2012	169.6	183.4	158.0	162.3	148.8	169.2	147.8	154.6	119.9	100.0	114.8	120.9	177.3	149.2	July 2019 - June 2020	
2011															2018/2019	
ሐምሌ 2010	126.1	133.9	119.6	128.9	112.6	116.9	122.8	150.1	112.9	100.0	85.6	54.0	130.9	119.4	July 2018	
ነሐሴ 2010	126.3	131.6	121.8	126.6	117.7	125.5	120.5	121.2	113.5	100.0	89.3	54.0	130.9	113.4	August "	
መስከረም 2011	130.9	141.6	121.9	110.4	114.8	124.4	118.0	127.2	112.5	100.0	87.8	112.4	134.7	124.8	September "	
ጥቅምት 2011	132.7	144.4	122.8	112.1	120.3	124.9	124.0	123.8	109.7	100.0	90.2	119.1	134.7	119.4	October "	
ሀዳር 2011	133.8	145.4	124.1	111.5	121.6	127.5	125.1	128.8	109.8	100.0	92.6	116.5	134.7	119.9	November "	
ታህሳስ 2011	136.5	144.4	129.9	136.0	120.1	130.0	129.8	137.8	112.7	100.0	94.9	115.9	150.5	121.4	December "	
ጥር 2011	136.0	143.9	129.3	110.7	126.5	130.6	128.0	132.0	110.8	100.0	97.3	124.1	151.0	120.7	January 2019	
የከተት 2011	135.4	143.6	128.4	121.8	127.5	124.1	128.0	140.7	117.5	100.0	94.6	121.9	151.0	123.4	February "	
መጋቢት 2011	140.8	149.0	133.9	134.4	129.3	139.2	128.4	139.7	117.5	100.0	96.6	150.2	146.4	126.9	March "	
ሚያዝያ 2011	144.8	151.2	139.3	125.0	128.0	158.5	129.7	143.4	105.6	100.0	95.4	117.5	146.4	124.5	April "	
ግንቦት 2011	144.2	157.0	133.4	130.2	131.1	135.2	130.5	142.8	119.5	100.0	96.7	117.8	146.4	133.5	May "	
ሰኔ 2011	150.1	159.4	142.3	141.8	131.7	147.4	136.6	109.6	105.1	100.0	97.6	110.8	171.9	135.1	June "	
2012															2019/2020	
ሐምሌ 2011	153.2	166.4	142.0	143.8	133.0	145.8	138.3	116.0	105.7	100.0	99.1	82.0	171.9	132.3	July 2019	
ነሐሴ 2011	158.3	172.8	145.9	146.3	133.4	157.3	135.4	120.8	103.5	100.0	102.7	82.0	171.9	132.3	August "	
መስከረም 2012	161.7	175.5	149.9	140.5	147.8	155.5	139.3	159.4	110.5	100.0	108.8	146.8	173.7	145.8	September "	
ጥቅምት 2012	164.8	177.5	154.0	141.4	149.3	163.7	140.8	163.6	122.8	100.0	113.4	126.9	173.7	148.0	October "	
ሀዳር 2012	164.1	174.9	155.0	143.4	150.9	165.3	148.4	152.3	122.7	100.0	122.0	131.2	173.7	142.5	November "	
ታህሳስ 2012	163.4	172.9	155.4	152.1	151.2	167.7	146.7	149.8	115.4	100.0	116.0	140.8	171.2	145.8	December "	

ሠንጠረዥ 1A፤ ጠቅላላ የምግብ የሽያጭ ዋጋ መመዘኛ ሊንዲክስና በሥሩ የተካተቱ ክፍሎች በአገር አቀፍ ደረጃ

ታህሳስ 2009 = 100

Table 1b: General Food Consumer Price Index and Its Components at Country Level  
December 2016 = 100

ወርና ዓመት	ዕቃዎች ስርዓት											ወርና ዓመት
	ምግብና አልኮሎሊክ ያልሆኑ መጠቀሻ	ዳቦና ለሀላ	ሥጋ	አሰና የባህር ምግቦች	ወተት አይብና ዕንቁላል	ዘይትና ቅባቶች	ፍራፍሬ	አትክልትና ጥራጥሬ	ስኳር ማርና ጅካሊት	ሌሎች ምግቦች	አልኮሎሊክ ያልሆኑ መጠቀሻ	
Month an Year	Food and Non-Alcoholic Beverages	Bread and Cereals	Meat (ND)	Fish and Seafood	Milk, cheese and eggs (ND)	Oils and fats (ND)	Fruit (ND)	Vegetables	Sugar, jam, honey, chocolate.	Food products n.e.c. (ND)	Non-Alcoholic Beverages and coffee	Month an Year
ታህሳስ 2009	100.0	100.0	100.0	100.0	100.0	100.0	100.0	100.0	100.0	100.0	100.0	December 2016
ሐምሌ 2009 - ሰኔ 2010	118.0	126.7	121.0	104.3	114.7	96.9	129.1	115.3	96.4	129.5	106.2	July 2017 - June 2018
ሐምሌ 2009 - ሰኔ 2010	133.5	144.7	143.5	113.7	134.6	99.0	145.6	135.1	106.5	141.5	111.0	July 2018 - June 2019
ሐምሌ 2011 - ሰኔ 2012	164.7	185.6	178.4	123.4	152.8	111.4	181.6	172.8	110.0	169.9	125.2	July 2019 - June 2020
2012												2019/2020
ሐምሌ 2011	152.6	171.1	166.7	119.2	145.5	113.5	165.9	158.3	116.0	151.1	113.7	July 2019
ነሐሴ 2011	157.6	177.0	169.8	113.4	149.1	103.4	169.1	169.7	116.8	156.0	116.9	August "
መስከረም 2012	159.5	178.6	174.6	111.1	154.8	106.6	171.2	173.7	113.2	152.1	117.6	September "
ጥቅምት 2012	158.4	181.2	173.3	114.1	150.9	106.2	180.0	167.3	112.3	149.2	119.3	October "
ሀዳር 2012	159.1	185.6	174.0	119.1	149.6	105.1	187.2	162.8	112.6	152.8	119.1	November "
ታህሳስ 2012	157.9	180.7	176.1	117.0	146.9	108.1	182.0	160.0	113.1	159.3	119.6	December "
ጥር 2012	158.7	179.6	178.7	122.7	150.2	106.1	186.1	161.0	104.6	166.9	121.4	January 2020
የካቲት 2012	164.5	180.8	177.1	121.1	156.6	110.5	189.6	175.6	105.5	176.5	126.0	February "
መጋቢት 2012	170.4	187.8	181.8	124.9	153.4	122.0	187.5	177.4	104.5	188.7	135.1	March "
ሚያዝያ 2012	175.2	198.1	188.5	142.6	156.2	114.8	192.1	182.7	105.2	189.9	134.7	April "
ግንቦት 2012	177.6	201.9	189.7	135.3	162.1	116.0	185.2	181.7	108.7	195.3	137.8	May "
ሰኔ 2012	184.8	204.5	190.7	139.8	158.3	124.8	183.6	203.0	107.5	201.2	141.1	June "
2013												2020/2021
ሐምሌ 2012	190.7	209.9	192.3	153.5	157.6	124.0	182.5	215.7	106.8	209.3	144.8	July 2020
ነሐሴ 2012	192.2	217.3	190.6	146.8	163.4	122.4	170.2	208.7	106.9	208.8	153.4	August "
መስከረም 2013	193.4	223.4	195.2	151.9	168.8	124.6	174.9	200.1	104.8	209.8	156.1	September "
ጥቅምት 2013	195.1	225.2	196.5	152.8	171.0	129.9	180.4	199.5	110.3	211.0	160.1	October "
ሀዳር 2013	194.3	224.8	195.4	151.7	173.5	134.6	184.7	192.3	115.1	212.7	161.8	November "
ታህሳስ 2013	191.5	221.1	196.9	141.9	172.8	142.7	182.7	186.8	117.0	206.3	157.3	December "
ጥር 2013	195.5	222.7	198.0	151.6	178.8	142.9	190.0	198.7	116.6	209.1	156.4	January 2021
የካቲት 2013	202.0	234.4	200.4	147.6	192.6	150.0	196.5	201.5	117.5	210.6	160.3	February "
መጋቢት 2013	208.0	243.6	203.4	176.1	203.7	149.0	199.6	205.9	119.7	220.4	161.5	March "
ሚያዝያ 2013	213.1	252.4	208.4	160.8	209.1	154.4	203.4	205.1	119.6	229.5	165.4	April "
#	21.7	27.4	10.6	12.8	33.8	34.5	5.9	12.3	13.7	20.9	22.8	

ሠንጠረዥ 3ለ፤ ጠቅላላ የምግብ የሽግግር ዋጋ መመዘኛ ሊንዲክስና በሥሩ የተካተቱ ክፍሎች ለአዲስ አበባ ከተማ አስተዳደር  
 ታህሳስ 2009 = 100

Table 3b: General Food Consumer Price Index and Its Components for Addis Ababa City Administration  
 December 2016 = 100

ወርና ዓመት	ዕቃዎች ስርዓት											ወርና ዓመት
	ምግብና አልኮሎሊክ ያልሆኑ መጠቀሻ	ዳቦና ለሀላ	ሥጋ	አሰና የባህር ምግቦች	ወተት አይብና ዕንቁላል	ዘይትና ቅባቶች	ፍራፍሬ	አትክልትና ጥራጥራ	ስኳር ማርና ጅካሊት	ሌሎች ምግቦች	አልኮሎሊክ ያልሆኑ መጠቀሻ	
Month an Year	Food and Non-Alcoholic Beverages	Bread and Cereals	Meat (ND)	Fish and Seafood	Milk, cheese and eggs (ND)	Oils and fats (ND)	Fruit (ND)	Vegetables	Sugar, jam, honey, chocolate.	Food products n.e.c. (ND)	Non-Alcoholic Beverages and coffee	Month an Year
ታህሳስ 2009	100.0	100.0	100.0	100.0	100.0	100.0	100.0	100.0	100.0	100.0	100.0	December 2016
ሐምሌ 2009 - ሰኔ 2010	112.6	112.8	118.1	103.3	110.7	110.9	136.6	107.5	100.0	126.6	104.3	July 2017 - June 2018
ሐምሌ 2009 - ሰኔ 2010	129.4	129.0	136.3	113.3	129.5	117.9	149.1	129.1	103.5	156.3	110.3	July 2018 - June 2019
ሐምሌ 2011 - ሰኔ 2012	163.0	164.6	173.5	132.8	147.4	139.4	181.9	170.7	114.1	193.4	125.3	July 2019 - June 2020
2011												2018/2019
ሐምሌ 2010	123.8	122.6	130.0	112.3	121.8	115.2	134.1	121.7	100.0	158.9	109.4	July 2018
ነሐሴ 2010	123.7	124.9	127.1	109.1	124.6	116.0	135.5	118.9	100.1	160.6	107.9	August "
መስከረም 2011	128.1	126.7	133.0	106.1	129.5	116.9	136.5	128.4	100.0	164.9	110.7	September "
ጥቅምት 2011	122.7	124.4	126.9	106.2	131.3	114.4	141.7	115.5	100.0	155.8	108.7	October "
ህዳር 2011	122.7	126.0	128.7	116.0	127.4	116.8	136.9	113.2	100.0	147.6	110.4	November "
ታህሳስ 2011	125.8	126.2	128.1	108.8	128.2	117.1	136.8	124.0	100.0	160.8	109.8	December "
ጥር 2011	126.4	127.2	139.9	117.7	130.8	117.5	145.1	115.8	100.0	156.0	109.9	January 2019
የካቲት 2011	126.9	129.3	134.5	116.1	129.5	117.3	149.1	119.1	100.0	154.2	111.9	February "
መጋቢት 2011	129.1	132.5	131.8	124.4	125.7	117.2	161.1	128.1	100.0	154.4	106.8	March "
ሚያዝያ 2011	132.8	131.2	137.5	113.5	127.9	119.8	178.8	138.0	114.1	153.2	110.2	April "
ግንቦት 2011	144.5	135.4	159.7	109.7	135.7	123.6	168.6	163.0	114.1	154.7	113.6	May "
ሰኔ 2011	146.8	142.2	158.1	119.3	141.2	122.6	165.3	164.0	114.1	154.4	114.6	June "
2012												2019/2020
ሐምሌ 2011	149.1	150.4	161.6	154.5	137.6	127.7	173.5	155.3	114.1	159.5	115.9	July 2019
ነሐሴ 2011	157.4	159.7	160.4	112.6	139.8	132.8	176.9	177.2	114.1	165.1	114.7	August "
መስከረም 2012	160.1	156.7	171.4	131.8	150.2	133.2	179.0	182.2	114.1	163.5	117.5	September "
ጥቅምት 2012	157.9	159.0	168.0	125.7	154.1	133.3	181.3	169.9	114.1	164.2	118.5	October "
ህዳር 2012	156.3	158.9	171.3	136.0	145.7	134.6	183.6	159.3	114.1	172.4	118.3	November "
ታህሳስ 2012	157.1	159.6	176.1	125.6	141.3	133.5	188.5	158.0	114.1	176.3	119.2	December "
ጥር 2012	158.5	159.6	184.5	112.1	148.5	134.8	195.5	153.6	114.1	181.0	120.1	January 2020
የካቲት 2012	160.6	160.7	173.4	129.5	146.2	146.4	190.3	166.6	114.1	179.0	123.9	February "
መጋቢት 2012	163.5	166.0	167.7	151.9	145.0	145.4	186.2	170.5	114.1	189.9	138.9	March "
ሚያዝያ 2012	172.0	178.3	177.1	122.1	148.6	147.3	181.1	176.1	114.1	214.2	140.3	April "
ግንቦት 2012	176.0	182.3	188.8	144.4	154.7	148.1	173.5	173.6	114.1	234.0	136.8	May "
ሰኔ 2012	187.7	183.7	182.2	147.9	157.4	155.9	172.8	205.3	114.1	321.9	139.4	June "
2013												2020/2021
ሐምሌ 2012	196.8	187.3	188.8	200.7	156.2	157.5	166.8	231.4	108.7	339.7	140.8	July 2020
ነሐሴ 2012	197.5	191.7	188.7	187.0	157.5	158.1	153.5	222.9	108.7	357.7	145.6	August "
መስከረም 2013	198.8	203.3	198.0	186.4	160.8	158.9	159.9	200.9	110.6	362.1	146.5	September "
ጥቅምት 2013	199.2	208.0	191.6	201.7	164.7	158.1	168.2	195.3	141.3	364.7	151.4	October "
ህዳር 2013	194.5	207.9	187.9	183.0	161.7	157.9	178.9	181.2	141.3	344.4	154.5	November "
ታህሳስ 2013	189.5	205.4	187.4	162.5	155.9	155.8	186.6	176.0	142.1	291.5	157.0	December "
ጥር 2013	193.7	203.3	192.7	184.5	167.0	168.3	194.5	180.5	141.3	314.9	159.7	January 2021
የካቲት 2013	201.9	214.2	198.7	143.1	167.3	173.9	207.0	179.1	141.3	374.1	161.5	February "
መጋቢት 2013	208.6	220.8	202.2	238.0	177.9	179.9	213.7	180.7	141.3	419.0	162.9	March "
ሚያዝያ 2013	215.8	229.1	212.9	167.2	176.1	190.2	220.2	183.2	140.5	441.9	162.6	April "

ሠንጠረዥ 4ላ፤ ጠቅላላ የምግብ የሽግግር ዋጋ መመዘኛ ሊንዲክስና በሥሩ የተካተቱ ክፍሎች ለአፋር ብሔራዊ ክልላዊ መንግስት  
 ታህሳስ 2009 = 100

Table 4b: General Food Consumer Price Index and Its Components for Afar National Regional State  
 December 2016 = 100

ወርና ዓመት	ደብዳቤ ስርዓት											ወርና ዓመት
	ምግብና አልኮሎሊክ ያልሆኑ መጠቀሻ	ዳቦና ለሀል	ሥጋ	አሰና የባህር ምግቦች	ወተት አይብና ዕንቁላል	ዘይትና ቅባቶች	ፍራፍሬ	አትክልትና ጥራጥራ	ስኳር ማርና ፍክሊት	ሌሎች ምግቦች	አልኮሎሊክ ያልሆኑ መጠቀሻ	
Month an Year	Food and Non-Alcoholic Beverages	Bread and Cereals	Meat (ND)	Fish and Seafood	Milk, cheese and eggs (ND)	Oils and fats (ND)	Fruit (ND)	Vegetables	Sugar, jam, honey, chocolate.	Food products n.e.c. (ND)	Non-Alcoholic Beverages and coffee	Month an Year
ታህሳስ 2009	100.0	100.0	100.0	100.0	100.0	100.0	100.0	100.0	100.0	100.0	100.0	December 2016
ሐምሌ 2009 - ሰኔ 2010	114.7	118.2	122.3	130.1	103.7	108.6	107.9	120.2	110.2	139.9	111.7	July 2017 - June 2018
ሐምሌ 2009 - ሰኔ 2010	127.7	139.8	158.9	161.6	112.7	100.1	119.8	147.4	89.5	104.6	116.7	July 2018 - June 2019
ሐምሌ 2011 - ሰኔ 2012	161.2	182.0	202.4	180.4	124.9	166.5	133.9	198.1	122.7	110.6	133.8	July 2019 - June 2020
2011												2018/2019
ሐምሌ 2010	122.1	133.4	129.9	154.7	104.5	102.6	124.3	138.4	81.1	140.4	120.6	July 2018
ነሐሴ 2010	123.3	136.0	129.5	155.1	105.5	102.4	123.0	144.3	81.1	125.7	120.4	August "
መስከረም 2011	127.1	134.4	160.8	160.3	107.1	112.1	122.0	161.4	81.5	121.6	116.7	September "
ጥቅምት 2011	125.8	133.6	158.0	157.8	115.6	105.0	121.7	140.2	81.1	123.6	117.1	October "
ሀዳር 2011	122.8	137.2	149.7	166.1	109.6	102.8	118.4	131.3	81.1	89.4	116.7	November "
ታህሳስ 2011	124.5	135.9	161.2	159.0	109.9	101.3	117.3	144.1	81.1	91.6	115.7	December "
ጥር 2011	126.8	137.4	159.1	164.2	121.5	101.3	118.6	135.3	93.5	89.8	113.0	January 2019
የካቲት 2011	124.7	138.3	165.3	165.3	110.5	102.0	117.3	132.1	90.3	93.7	113.2	February "
መጋቢት 2011	126.7	140.1	165.2	160.7	110.1	101.7	113.4	145.9	92.2	94.0	111.3	March "
ሚያዝያ 2011	128.1	144.9	168.6	162.2	109.9	89.7	115.0	143.6	92.2	95.0	115.2	April "
ግንቦት 2011	138.1	150.2	179.3	164.9	120.0	90.1	121.5	179.8	105.1	97.4	116.7	May "
ሰኔ 2011	142.3	155.7	180.6	168.8	128.5	90.9	125.1	172.9	113.9	93.3	124.1	June "
2012												2019/2020
ሐምሌ 2011	146.4	162.9	192.2	170.6	112.2	153.8	127.3	178.2	125.4	99.2	121.1	July 2019
ነሐሴ 2011	151.9	162.6	191.2	171.7	137.3	142.9	127.4	184.6	113.8	100.3	125.2	August "
መስከረም 2012	156.9	176.9	192.6	171.4	114.4	195.5	130.8	202.7	112.9	104.8	124.6	September "
ጥቅምት 2012	161.0	180.5	196.9	196.0	123.6	180.5	123.9	211.2	123.7	102.9	123.3	October "
ሀዳር 2012	160.5	179.3	198.0	179.6	132.7	170.4	127.9	196.3	113.8	99.1	129.8	November "
ታህሳስ 2012	157.8	179.2	196.2	175.5	131.0	154.1	133.5	189.9	102.4	98.8	129.7	December "
ጥር 2012	155.7	178.7	208.0	172.8	117.2	161.2	141.8	175.2	132.1	99.3	132.2	January 2020
የካቲት 2012	157.4	181.2	211.5	175.0	116.7	156.0	134.7	192.7	106.0	96.7	136.7	February "
መጋቢት 2012	162.9	181.1	212.1	186.9	129.7	166.0	137.7	201.7	109.0	104.5	142.4	March "
ሚያዝያ 2012	169.1	196.9	210.9	186.4	122.9	167.9	139.9	195.4	132.1	138.8	146.1	April "
ግንቦት 2012	175.4	206.2	196.7	187.6	133.2	177.7	137.3	199.6	144.5	144.6	143.1	May "
ሰኔ 2012	179.4	198.1	222.0	191.4	127.7	172.3	144.4	249.2	156.6	138.5	151.0	June "
2013												2020/2021
ሐምሌ 2012	177.4	187.6	219.0	197.0	125.9	172.1	138.7	264.7	156.6	171.3	144.5	July 2020
ነሐሴ 2012	182.2	187.5	219.0	194.0	138.2	173.0	143.8	272.1	156.6	189.0	149.5	August "
መስከረም 2013	179.9	189.2	192.1	194.6	146.5	172.3	141.2	263.4	123.8	187.0	146.6	September "
ጥቅምት 2013	187.9	199.9	194.3	194.0	157.8	197.1	138.2	247.9	150.0	195.5	150.6	October "
ሀዳር 2013	189.6	206.6	218.5	200.7	163.6	217.8	149.3	214.5	123.8	190.3	157.1	November "
ታህሳስ 2013	185.0	201.6	193.6	193.6	160.7	226.2	146.1	209.5	132.1	163.3	158.9	December "
ጥር 2013	184.4	206.5	195.1	210.6	154.7	211.5	147.4	209.2	123.8	173.7	156.3	January 2021
የካቲት 2013	196.7	213.2	200.8	191.7	182.6	221.3	139.8	211.8	144.5	198.9	161.9	February "
መጋቢት 2013	205.6	228.4	220.1	218.4	205.2	177.4	148.9	195.3	144.5	229.5	163.1	March "
ሚያዝያ 2013	215.6	237.3	226.4	215.5	217.8	235.8	158.0	196.4	148.6	228.2	164.8	April "

ደንበኞች 5ላይ ጠቅላላ የምግብ የሽያጭ ዋጋ መመዘኛ ለንዲክስና በሥራ የተከተቱ ክፍሎች ለአማራ ብሔራዊ ክልላዊ መንግስት  
 ታህሳስ 2009 = 100

Table 5b: General Food Consumer Price Index and Its Components for Amhara National Regional State  
 December 2016 = 100

ወርና ዓመት	ደንበኞች   ስራዎች											ወርና ዓመት
	ምግብና አልኮሎሊክ ያልሆኑ መጠቀሻ	ግብና ለሀላ	ሥጋ	አሰና የባህር ምግቦች	ወተት አይብና ዕንቁላል	ዘይትና ቅባቶች	ፍሬፍሬ	አትክልትና ጥራጥራ	ስኳር ማርና ጅኮሊት	ሌሎች ምግቦች	አልኮሎሊክ ያልሆኑ መጠቀሻ	
Month an Year	Food and Non-Alcoholic Beverages	Bread and Cereals	Meat (ND)	Fish and Seafood	Milk, cheese and eggs (ND)	Oils and fats (ND)	Fruit (ND)	Vegetables	Sugar, jam, honey, chocolate.	Food products n.e.c. (ND)	Non-Alcoholic Beverages and coffee	Month an Year
ታህሳስ 2009	100.0	100.0	100.0	0.0	100.0	100.0	100.0	100.0	100.0	100.0	100.0	December 2016
ሐምሌ 2009 - ሰኔ 2010	122.0	132.4	126.2	0.0	127.8	105.1	132.9	107.7	102.7	130.0	105.1	July 2017 - June 2018
ሐምሌ 2009 - ሰኔ 2010	138.2	155.7	152.2	0.0	144.9	108.5	142.2	130.7	106.5	135.2	108.6	July 2018 - June 2019
ሐምሌ 2011 - ሰኔ 2012	171.0	200.5	184.6	0.0	170.7	122.7	186.7	153.1	120.7	175.6	118.4	July 2019 - June 2020
ሐምሌ 2010	134.7	150.9	147.1	0.0	139.1	108.0	131.8	133.4	103.2	126.3	110.1	July 2018
ነሐሴ 2010	134.9	149.6	142.6	0.0	140.1	107.5	141.7	131.9	103.3	132.7	107.5	August "
መስከረም 2011	132.2	150.8	147.1	0.0	139.1	108.0	131.8	121.8	103.2	126.3	110.1	September "
ጥቅምት 2011	132.7	148.8	145.4	0.0	142.2	106.9	131.6	120.2	104.3	133.6	108.2	October "
ሀዳር 2011	132.4	149.5	144.2	0.0	145.8	106.8	135.5	119.6	103.6	132.5	107.2	November "
ታህሳስ 2011	133.4	150.5	143.8	0.0	143.4	107.3	140.0	123.9	103.7	131.6	107.8	December "
ጥር 2011	134.8	153.0	149.4	0.0	141.2	107.6	137.1	123.2	103.7	132.5	108.7	January 2019
የካቲት 2011	135.9	152.5	145.9	0.0	145.2	107.3	145.6	126.4	103.5	136.1	108.8	February "
መጋቢት 2011	139.2	155.2	150.7	0.0	144.4	108.5	145.7	135.6	103.9	136.6	107.7	March "
ሚያዝያ 2011	141.2	163.6	147.3	0.0	142.8	110.1	150.3	126.0	111.3	144.5	106.2	April "
ግንቦት 2011	151.4	165.8	182.7	0.0	157.5	111.6	158.6	150.8	117.8	145.6	109.3	May "
ሰኔ 2011	155.3	178.0	180.4	0.0	157.8	112.2	156.6	155.0	116.9	143.6	111.0	June "
2012												2019/2020
ሐምሌ 2011	158.1	187.4	174.8	0.0	164.4	113.7	178.8	152.7	119.6	147.8	108.1	July 2019
ነሐሴ 2011	163.4	191.2	178.3	0.0	159.0	115.6	182.7	163.4	120.1	153.2	111.4	August "
መስከረም 2012	162.7	191.9	183.7	0.0	170.2	115.9	177.7	163.6	121.9	145.9	111.8	September "
ጥቅምት 2012	157.3	193.9	180.9	0.0	165.0	115.6	185.1	143.2	119.9	141.6	107.9	October "
ሀዳር 2012	161.3	203.4	177.3	0.0	166.4	115.6	190.7	141.9	121.1	148.5	110.4	November "
ታህሳስ 2012	164.3	199.6	181.6	0.0	166.8	114.5	186.1	141.1	121.5	164.5	112.7	December "
ጥር 2012	166.4	197.5	182.9	0.0	170.9	114.4	195.1	144.0	120.7	173.5	109.3	January 2020
የካቲት 2012	174.3	196.9	181.6	0.0	173.6	121.5	186.2	156.2	119.5	192.7	117.3	February "
መጋቢት 2012	181.9	203.5	190.3	0.0	168.3	135.1	191.7	154.0	120.8	207.6	132.2	March "
ሚያዝያ 2012	184.2	210.6	199.1	0.0	170.2	128.6	187.2	153.2	120.6	208.0	130.1	April "
ግንቦት 2012	186.0	212.5	193.8	0.0	183.6	135.4	191.8	152.5	123.1	212.1	132.8	May "
ሰኔ 2012	192.2	217.9	191.1	0.0	190.0	146.5	187.1	171.0	119.9	212.0	137.0	June "
2013												2020/2021
ሐምሌ 2012	199.0	229.8	192.3	0.0	187.4	142.1	188.1	184.8	120.1	213.1	141.3	July 2020
ነሐሴ 2012	201.2	239.6	195.5	0.0	186.9	140.6	184.0	185.6	119.2	207.8	144.1	August "
መስከረም 2013	199.8	244.8	195.0	0.0	188.4	145.2	191.9	175.4	119.3	203.4	144.5	September "
ጥቅምት 2013	200.4	250.1	201.8	0.0	192.7	143.9	192.5	168.0	123.0	202.0	147.6	October "
ሀዳር 2013	198.6	249.7	200.5	0.0	193.5	151.6	198.9	157.4	147.5	201.3	149.7	November "
ታህሳስ 2013	194.7	237.0	205.4	0.0	191.1	156.7	201.9	154.2	146.7	199.1	153.4	December "
ጥር 2013	197.4	241.4	199.3	0.0	198.5	162.0	209.1	160.2	151.1	199.4	155.1	January 2021
የካቲት 2013	198.8	254.2	207.8	0.0	199.3	163.7	215.6	158.4	151.1	189.9	159.5	February "
መጋቢት 2013	201.5	260.8	207.3	0.0	197.1	171.8	210.8	153.4	153.3	191.2	161.7	March "
ሚያዝያ 2013	206.3	264.3	224.5	0.0	201.5	183.8	220.0	151.1	152.5	198.6	163.5	April "

ሠንጠረዥ 6A፤ ጠቅላላ የምግብ የሽያጭ ዋጋ መመዘኛ ለጊዜያዊ ስራ ለተከተቱ ክፍሎች ለቤ/ጉሙዝ ብሔራዊ ክልላዊ መንግስት

ታህሳስ 2009 = 100

Table 6b: General Food Consumer Price Index and Its Components for Beneshangul-Gumuz National Regional State  
December 2016 = 100

ወርና ዓመት	ዕቃዎች ስርዓት											ወርና ዓመት
	ምግብና አልኮሎሊክ ያልሆኑ መጠቀሻ	ዳቦና ለሀላ	ሥጋ	ገብና የባህር ምግቦች	ወተት አይብና ዕንቁላል	ዘይትና ቅባቶች	ፍራፍሬ	አትክልትና ጥራጥራ	ስኳር ማርና ፍክላት	ሌሎች ምግቦች	አልኮሎሊክ ያልሆኑ መጠቀሻ	
Month an Year	Food and Non-Alcoholic Beverages	Bread and Cereals	Meat (ND)	Fish and Seafood	Milk, cheese and eggs (ND)	Oils and fats (ND)	Fruit (ND)	Vegetables	Sugar, jam, honey, chocolate.	Food products n.e.c. (ND)	Non-Alcoholic Beverages and coffee	Month an Year
ታህሳስ 2009	100.0	100.0	100.0	100.0	100.0	100.0	100.0	100.0	100.0	100.0	100.0	December 2016
ሐምሌ 2009 - ሰኔ 2010	120.1	140.8	123.4	117.3	107.4	108.7	97.6	113.8	110.2	125.7	95.6	July 2017 - June 2018
ሐምሌ 2009 - ሰኔ 2010	133.8	149.3	149.3	122.5	114.8	113.4	140.6	135.1	112.8	144.7	101.7	July 2018 - June 2019
ሐምሌ 2011 - ሰኔ 2012	173.8	202.1	182.0	139.4	123.6	130.4	137.4	192.5	125.3	200.0	112.1	July 2019 - June 2020
2011												2018/2019
ሐምሌ 2010	127.8	145.7	132.4	120.8	110.1	105.3	96.6	122.0	110.0	142.6	113.2	July 2018
ነሐሴ 2010	128.2	146.8	140.3	116.2	111.1	99.6	115.8	128.8	109.1	127.5	105.7	August "
መስከረም 2011	131.5	144.4	159.3	120.8	113.7	114.2	115.1	134.2	110.7	126.7	101.4	September "
ጥቅምት 2011	128.9	147.7	143.7	120.8	112.8	107.4	116.0	128.2	110.7	131.6	99.7	October "
ሀዳር 2011	128.0	145.0	144.4	120.8	113.7	111.0	120.3	123.6	111.8	135.5	101.0	November "
ታህሳስ 2011	133.6	153.0	144.6	120.8	116.5	112.0	120.3	135.2	111.8	138.5	101.5	December "
ጥር 2011	134.6	154.2	146.9	120.8	113.6	114.7	121.1	132.9	109.4	149.9	102.2	January 2019
የከተት 2011	132.8	149.6	147.3	120.8	115.6	114.0	194.9	124.3	109.4	162.3	102.1	February "
መጋቢት 2011	131.0	147.3	149.8	120.8	117.0	123.4	188.6	123.5	109.4	150.4	93.6	March "
ሚያዝያ 2011	135.3	146.8	144.5	120.8	116.7	121.9	170.3	139.7	114.4	156.8	99.0	April "
ግንቦት 2011	142.0	149.6	164.6	129.1	118.2	117.5	165.9	157.6	120.9	153.4	99.1	May "
ሰኔ 2011	151.3	161.9	174.0	138.0	118.4	119.5	162.1	171.7	126.5	160.5	102.6	June "
2012												2019/2020
ሐምሌ 2011	160.2	182.8	177.2	138.0	118.6	118.2	134.1	180.6	126.5	168.2	103.9	July 2019
ነሐሴ 2011	163.1	181.1	178.3	138.0	120.1	122.5	113.3	198.7	126.5	154.6	101.2	August "
መስከረም 2012	170.2	195.9	183.1	138.0	122.1	133.6	130.6	203.4	124.4	157.5	98.9	September "
ጥቅምት 2012	165.7	196.7	183.6	138.0	121.8	124.2	140.6	186.3	125.2	153.8	101.5	October "
ሀዳር 2012	169.5	205.4	186.5	138.0	122.5	125.3	126.1	186.3	126.5	162.1	104.9	November "
ታህሳስ 2012	164.9	202.1	167.6	129.1	125.1	119.2	122.3	179.0	127.0	168.2	105.8	December "
ጥር 2012	166.2	197.0	182.7	129.1	123.1	122.3	124.2	177.6	126.5	181.0	109.8	January 2020
የከተት 2012	173.9	206.5	184.9	138.0	122.7	131.9	138.4	190.2	126.5	180.4	114.6	February "
መጋቢት 2012	178.9	209.6	179.3	138.0	125.1	133.8	135.2	182.2	126.5	259.5	121.4	March "
ሚያዝያ 2012	182.0	214.0	181.1	155.3	123.8	135.6	152.9	192.9	121.4	227.4	129.0	April "
ግንቦት 2012	185.6	211.8	188.5	155.3	129.9	145.6	149.1	193.9	122.9	266.2	124.8	May "
ሰኔ 2012	205.2	222.3	191.3	138.0	128.2	153.0	181.4	238.7	124.6	321.3	129.0	June "
2013												2020/2021
ሐምሌ 2012	220.6	238.8	202.6	146.4	130.3	149.3	157.4	274.6	125.5	343.3	126.4	July 2020
ነሐሴ 2012	225.8	251.2	202.5	155.3	131.9	152.1	129.7	273.7	123.3	348.8	136.8	August "
መስከረም 2013	221.4	265.5	209.6	155.3	130.3	151.2	144.4	230.0	137.9	350.9	143.9	September "
ጥቅምት 2013	219.0	262.2	213.9	138.0	131.2	150.2	138.6	220.0	144.7	340.7	154.1	October "
ሀዳር 2013	228.9	280.0	219.8	155.3	103.5	185.8	160.8	216.9	146.1	389.8	147.7	November "
ታህሳስ 2013	213.6	243.4	229.0	138.0	131.3	165.9	129.7	223.2	160.6	275.5	159.8	December "
ጥር 2013	210.9	237.3	216.6	138.0	105.5	169.9	155.3	218.5	159.1	307.4	157.3	January 2021
የከተት 2013	219.6	250.3	212.4	172.5	113.4	171.8	152.1	217.1	162.5	392.5	150.6	February "
መጋቢት 2013	222.3	256.9	211.1	155.3	122.0	181.1	302.7	207.5	159.4	402.2	151.3	March "
ሚያዝያ 2013	223.6	252.9	220.6	155.3	122.8	182.2	220.4	216.2	160.8	406.8	148.9	April "

ወንጠረዥ 7A፤ ጠቅላላ የምግብ የሽያጭ ዋጋ መመዘኛ ሊንዲክስና በሥሩ የተካተቱ ክፍሎች ለድሬዳዋ ከተማ አስተዳደር

ታህሳስ 2009 = 100

Table 7b: General Food Consumer Price Index and Its Components for Dire Dawa City Administration  
December 2016 = 100

ወርና ዓመት	ዕቃዎች ስርዓት											ወርና ዓመት
	ምግብና አልኮሎሊክ የልሆኑ መጠቀሚያዎች	ዳቦና ለሀል	ሥጋ	አሰና የባህር ምግቦች	ወተት አይብና ዕንቁላል	ዘይትና ቅባቶች	ፍራፍሬ	አትክልትና ጥራጥሬ	ስኳር ማርና ጅኮሊት	ሌሎች ምግቦች	አልኮሎሊክ የልሆኑ መጠቀሚያዎች	
Month an Year	Food and Non-Alcoholic Beverages	Bread and Cereals	Meat (ND)	Fish and Seafood	Milk, cheese and eggs (ND)	Oils and fats (ND)	Fruit (ND)	Vegetables	Sugar, jam, honey, chocolate.	Food products n.e.c. (ND)	Non-Alcoholic Beverages and coffee	Month an Year
ታህሳስ 2009	100.0	100.0	100.0	100.0	100.0	100.0	100.0	100.0	100.0	100.0	100.0	December 2016
ሐምሌ 2009 - ሰኔ 2010	113.5	112.9	114.8	123.0	115.4	104.7	132.5	113.7	105.9	129.4	114.1	July 2017 - June 2018
ሐምሌ 2009 - ሰኔ 2010	136.7	139.6	144.2	137.4	134.1	110.8	147.8	135.6	98.8	200.1	116.0	July 2018 - June 2019
ሐምሌ 2011 - ሰኔ 2012	171.8	176.3	186.0	154.4	158.7	118.9	177.6	180.4	111.0	253.9	135.0	July 2019 - June 2020
2011												2018/2019
ሐምሌ 2010	136.6	130.8	130.7	133.8	130.5	110.1	135.1	149.2	95.0	229.1	124.7	July 2018
ነሐሴ 2010	132.6	131.3	134.6	133.8	129.2	110.2	124.0	131.1	95.0	228.3	121.2	August "
መስከረም 2011	132.3	129.3	141.7	132.3	134.5	108.6	129.3	138.1	95.0	203.2	110.3	September "
ጥቅምት 2011	129.6	134.1	138.2	135.3	132.4	108.7	129.3	120.5	95.0	199.1	109.8	October "
ሀዳር 2011	129.2	135.2	138.2	128.5	131.6	109.1	147.2	118.3	95.0	189.5	111.2	November "
ታህሳስ 2011	128.6	138.7	138.2	131.5	129.0	109.1	145.7	113.4	95.0	177.0	107.0	December "
ጥር 2011	131.7	139.4	140.1	133.1	131.9	111.3	153.4	119.9	95.0	182.7	117.0	January 2019
የካቲት 2011	133.5	141.7	140.1	135.3	130.8	111.6	160.6	120.5	95.0	195.8	119.4	February "
መጋቢት 2011	136.1	143.8	140.1	135.3	131.6	109.2	160.6	127.1	95.0	200.2	122.1	March "
ሚያዝያ 2011	141.9	140.1	140.1	134.6	127.2	112.7	165.3	156.1	110.0	198.1	120.8	April "
ግንቦት 2011	154.5	152.4	173.1	158.5	147.6	118.5	168.4	173.1	110.0	193.8	112.5	May "
ሰኔ 2011	154.3	159.0	175.1	156.9	152.3	110.1	155.0	159.6	110.0	204.0	115.9	June "
2012												2019/2020
ሐምሌ 2011	157.0	164.4	177.0	151.5	152.8	110.2	156.5	158.6	110.0	214.5	115.3	July 2019
ነሐሴ 2011	162.5	170.9	180.9	156.8	159.8	110.1	154.6	169.5	106.6	214.1	113.4	August "
መስከረም 2012	168.3	164.7	175.1	156.9	155.0	115.7	161.5	200.2	110.0	217.6	133.1	September "
ጥቅምት 2012	177.6	175.3	182.8	155.3	164.3	115.6	174.3	216.1	110.0	222.2	132.0	October "
ሀዳር 2012	168.7	179.9	178.9	141.5	162.6	115.4	175.1	171.4	110.0	222.7	132.8	November "
ታህሳስ 2012	163.3	171.5	175.1	147.6	159.7	115.4	181.2	165.3	110.0	217.8	135.9	December "
ጥር 2012	161.3	175.7	175.1	149.0	157.3	113.1	205.5	151.3	110.0	216.8	128.5	January 2020
የካቲት 2012	166.6	175.8	186.8	153.8	155.5	115.5	192.3	167.7	109.2	211.4	142.3	February "
መጋቢት 2012	173.9	179.8	208.7	161.6	154.2	115.4	180.5	168.6	110.0	280.4	147.4	March "
ሚያዝያ 2012	178.5	184.2	175.1	161.6	156.4	133.3	202.2	183.4	113.3	291.3	146.0	April "
ግንቦት 2012	186.3	183.2	210.1	156.1	161.7	133.6	178.0	189.8	113.3	364.3	144.5	May "
ሰኔ 2012	197.4	189.7	206.2	160.8	165.7	133.6	169.9	223.2	120.0	374.2	148.4	June "
2013												2020/2021
ሐምሌ 2012	225.1	201.0	210.1	161.6	164.7	133.6	182.8	309.7	120.0	421.8	151.6	July 2020
ነሐሴ 2012	213.2	204.2	206.2	160.0	164.8	133.6	170.8	250.8	120.0	438.1	155.4	August "
መስከረም 2013	211.3	203.2	208.1	156.9	175.5	133.6	179.9	242.4	120.0	440.3	148.9	September "
ጥቅምት 2013	207.6	208.3	210.1	156.9	176.1	133.5	182.0	222.7	120.0	401.2	159.6	October "
ሀዳር 2013	201.8	212.5	210.1	161.6	174.6	133.6	203.5	198.3	120.0	368.5	152.0	November "
ታህሳስ 2013	202.8	210.4	210.1	161.6	163.3	185.2	187.4	195.4	138.4	333.3	149.3	December "
ጥር 2013	209.2	219.1	210.1	184.7	168.7	185.3	202.7	199.7	138.4	365.6	147.5	January 2021
የካቲት 2013	213.8	220.1	210.1	181.5	176.8	185.2	201.2	188.9	135.0	491.9	151.7	February "
መጋቢት 2013	223.3	233.1	216.6	184.7	190.9	188.6	242.9	189.5	135.0	540.7	150.4	March "
ሚያዝያ 2013	222.1	231.4	213.2	181.5	193.4	182.5	214.7	185.4	135.0	565.4	153.0	April "



ደንበኞች ለጸሎት የሚገቡ የጥቅም ስምዎች ለጸሎት የተከተቱ ክፍሎች ለጸሎት የተከተቱ ክፍሎች ለጸሎት የተከተቱ ክፍሎች  
 ታህሳስ 2009 = 100

Table 8b: General Food Consumer Price Index and Its Components for Gambella National Regional State  
 December 2016 = 100

ወርና ዓመት	ዕቃዎች ስርዓት											ወርና ዓመት
	ምግብና አልኮሎሊክ ያልሆኑ መጠቀሻዎች	ግብና ለሀይ	ሥጋ	ገብና የባህር ምግቦች	ወተት አይብና ዕንቁላል	ዘይትና ቅባቶች	ፍሬፍሬ	አትክልትና ጥሬጥሬ	ስኳር ማርና ፍክላት	ሌሎች ምግቦች	አልኮሎሊክ ያልሆኑ መጠቀሻዎች	
Month an Year	Food and Non-Alcoholic Beverages	Bread and Cereals	Meat (ND)	Fish and Seafood	Milk, cheese and eggs (ND)	Oils and fats (ND)	Fruit (ND)	Vegetables	Sugar, jam, honey, chocolate.	Food products n.e.c. (ND)	Non-Alcoholic Beverages and coffee	Month an Year
ታህሳስ 2009	100.0	100.0	100.0	100.0	100.0	100.0	100.0	100.0	100.0	100.0	100.0	December 2016
ሐምሌ 2009 - ሰኔ 2010	112.9	127.7	118.0	101.4	97.1	110.1	89.2	99.9	99.0	135.4	103.9	July 2017 - June 2018
ሐምሌ 2009 - ሰኔ 2010	129.8	141.5	153.4	110.1	131.5	122.5	117.0	114.4	96.8	143.0	119.1	July 2018 - June 2019
ሐምሌ 2011 - ሰኔ 2012	159.4	182.2	186.2	116.3	162.8	135.6	165.1	148.7	112.9	180.5	112.1	July 2019 - June 2020
2011												2018/2019
ሐምሌ 2010	129.0	154.0	136.7	106.9	114.3	118.6	147.4	107.6	95.8	138.8	118.3	July 2018
ነሐሴ 2010	127.5	147.2	137.7	106.9	123.1	117.2	139.8	106.8	95.8	127.0	126.7	August "
መስከረም 2011	127.0	143.6	138.7	114.3	125.1	121.6	78.4	107.0	95.8	140.7	122.5	September "
ጥቅምት 2011	124.4	130.8	147.5	114.3	125.0	119.0	78.4	110.6	95.8	147.7	121.0	October "
ሀዳር 2011	125.6	137.5	150.0	114.3	126.2	120.9	79.5	102.8	95.8	149.5	122.9	November "
ታህሳስ 2011	124.9	124.2	158.9	106.9	126.4	119.0	78.5	120.4	95.8	146.1	121.1	December "
ጥር 2011	125.2	126.7	161.6	115.7	135.6	122.8	77.8	114.2	95.0	133.1	117.7	January 2019
የካቲት 2011	128.7	134.8	164.8	106.9	141.4	122.8	119.2	112.7	98.5	140.9	116.1	February "
መጋቢት 2011	133.3	143.8	160.4	111.4	144.5	127.1	132.5	114.0	98.5	149.5	119.6	March "
ሚያዝያ 2011	130.2	139.4	150.7	100.0	138.7	125.2	148.8	116.4	95.0	147.5	119.7	April "
ግንቦት 2011	140.2	158.3	163.4	117.1	138.4	126.6	156.9	128.1	100.0	147.4	110.1	May "
ሰኔ 2011	141.4	157.2	170.6	106.9	139.6	128.8	167.5	132.1	100.0	147.4	113.9	June "
2012												2019/2020
ሐምሌ 2011	148.7	175.8	170.7	106.9	141.9	135.4	172.2	136.0	107.6	147.1	108.4	July 2019
ነሐሴ 2011	150.1	175.2	171.0	106.9	142.3	136.5	177.0	141.8	107.6	149.4	109.7	August "
መስከረም 2012	148.8	173.9	169.0	100.0	131.5	126.5	162.3	143.9	112.9	160.5	113.5	September "
ጥቅምት 2012	149.7	164.6	175.2	104.5	142.5	134.2	177.0	146.5	112.9	171.9	116.9	October "
ሀዳር 2012	144.6	162.9	167.6	110.5	143.4	125.0	177.0	134.0	112.9	159.9	111.2	November "
ታህሳስ 2012	148.6	166.6	181.1	110.5	148.1	123.8	177.0	139.8	112.9	158.3	113.5	December "
ጥር 2012	152.5	170.4	189.4	121.2	151.5	119.7	177.0	146.0	106.3	172.0	108.3	January 2020
የካቲት 2012	158.6	174.1	196.1	114.3	164.1	124.2	177.0	154.9	114.4	190.9	109.4	February "
መጋቢት 2012	166.7	206.3	193.6	114.3	174.3	128.0	151.4	139.5	116.6	187.9	110.3	March "
ሚያዝያ 2012	183.4	215.8	203.7	142.9	213.4	147.2	163.5	164.5	114.4	206.2	112.3	April "
ግንቦት 2012	175.0	201.2	210.5	128.6	198.2	163.4	143.5	143.7	120.0	231.2	113.0	May "
ሰኔ 2012	185.6	199.4	206.4	135.5	202.4	163.5	126.9	194.3	116.6	231.2	118.8	June "
2013												2020/2021
ሐምሌ 2012	186.7	213.4	204.8	142.9	219.1	160.7	120.8	170.6	120.0	226.8	119.1	July 2020
ነሐሴ 2012	195.5	230.0	212.9	135.5	217.7	142.6	112.0	189.5	120.0	230.9	122.9	August "
መስከረም 2013	194.1	228.4	212.4	142.9	211.1	164.3	133.8	172.3	117.5	230.8	141.3	September "
ጥቅምት 2013	189.1	214.1	211.9	142.9	217.5	170.9	135.5	160.8	131.5	231.3	147.3	October "
ሀዳር 2013	194.3	221.0	217.3	142.9	206.9	168.8	113.4	176.8	129.6	248.8	144.8	November "
ታህሳስ 2013	188.4	213.3	194.8	135.5	206.7	176.8	133.8	171.0	142.0	231.3	143.3	December "
ጥር 2013	193.6	212.7	229.0	142.9	208.0	178.1	133.8	175.8	146.6	248.8	142.9	January 2021
የካቲት 2013	203.6	223.8	225.0	142.9	207.4	199.2	231.1	196.5	151.8	248.8	143.7	February "
መጋቢት 2013	212.8	235.8	232.5	164.1	201.5	200.2	236.5	219.7	136.5	231.2	151.1	March "
ሚያዝያ 2013	214.8	234.8	227.0	157.1	236.4	232.5	215.6	207.1	160.3	231.3	149.7	April "

ደንበኞች 9A፤ ጠቅላላ የምግብ የሽያጭ ዋጋ መመዘኛ ሊንዲክስና በሥራ የተካተቱ ክፍሎች ለሐረር ብሔራዊ ክልላዊ መንግስት  
 ታህሳስ 2009 = 100

Table 9b: General Food Consumer Price Index and Its Components for Harari National Regional State  
 December 2016 = 100

ወርና ዓመት	ደንበኞች   ስራዎች											ወርና ዓመት
	ምግብና አልኮሎሊክ ያልሆኑ መጠቀሻ	ዳቦና ለሀላ	ሥጋ	አሰና የባህር ምግቦች	ወተት አይብና ዕንቁላል	ዘይትና ቅባቶች	ፍሬፍሬ	አትክልትና ጥራጥራ	ስኳር ማርና ጅክሊት	ሌሎች ምግቦች	አልኮሎሊክ ያልሆኑ መጠቀሻ	
Month an Year	Food and Non-Alcoholic Beverages	Bread and Cereals	Meat (ND)	Fish and Seafood	Milk, cheese and eggs (ND)	Oils and fats (ND)	Fruit (ND)	Vegetables	Sugar, jam, honey, chocolate.	Food products n.e.c. (ND)	Non-Alcoholic Beverages and coffee	Month an Year
ታህሳስ 2009	100.0	100.0	100.0	100.0	100.0	100.0	100.0	100.0	100.0	100.0	100.0	December 2016
ሐምሌ 2009 - ሰኔ 2010	111.9	116.5	106.4	0.0	111.3	116.6	146.2	103.5	109.8	115.5	98.2	July 2017 - June 2018
ሐምሌ 2009 - ሰኔ 2010	128.0	135.3	127.5	0.0	136.1	114.0	140.3	120.2	110.3	132.5	100.3	July 2018 - June 2019
ሐምሌ 2011 - ሰኔ 2012	161.5	176.0	161.1	0.0	162.1	118.0	180.6	161.3	134.9	156.0	115.0	July 2019 - June 2020
2011												2018/2019
ሐምሌ 2010	124.9	126.9	120.6	0.0	131.7	111.3	109.1	135.2	107.5	125.2	103.26	July 2018
ነሐሴ 2010	123.9	130.3	120.2	0.0	131.0	114.0	129.1	116.9	107.5	134.2	101.90	August "
መስከረም 2011	121.6	130.1	123.8	0.0	127.5	113.8	134.8	103.7	105.7	129.8	102.44	September "
ጥቅምት 2011	122.9	134.5	125.2	0.0	132.4	114.0	128.5	96.8	107.6	130.3	100.14	October "
ሀዳር 2011	123.8	133.6	121.1	0.0	132.4	112.3	127.9	110.3	107.6	126.7	97.81	November "
ታህሳስ 2011	124.2	137.0	121.2	0.0	131.7	111.4	130.6	104.5	109.4	126.0	96.55	December "
ጥር 2011	126.9	138.8	120.3	0.0	132.6	111.4	130.6	113.9	109.4	131.1	99.10	January 2019
የከተት 2011	124.5	137.0	118.0	0.0	132.9	113.1	144.2	104.6	108.5	128.2	99.53	February "
መጋቢት 2011	126.3	133.9	120.3	0.0	141.7	116.7	138.0	114.1	109.4	133.2	100.16	March "
ሚያዝያ 2011	131.9	134.1	129.9	0.0	132.2	114.4	160.7	143.3	116.8	141.4	99.27	April "
ግንቦት 2011	140.8	144.6	156.7	0.0	140.6	117.5	173.0	145.5	116.8	138.1	100.79	May "
ሰኔ 2011	143.8	142.7	152.3	0.0	166.1	117.5	177.0	153.7	116.8	145.4	102.17	June "
2012												2019/2020
ሐምሌ 2011	144.6	150.4	152.5	0.0	154.8	115.3	157.0	148.1	114.0	145.0	101.68	July 2019
ነሐሴ 2011	155.2	162.4	160.1	0.0	162.7	117.3	178.1	166.0	116.8	150.3	107.60	August "
መስከረም 2012	161.8	170.1	159.1	0.0	162.4	124.0	176.5	180.7	134.9	150.8	109.80	September "
ጥቅምት 2012	162.6	174.8	159.6	0.0	162.4	117.3	182.7	177.7	137.3	149.1	103.33	October "
ሀዳር 2012	159.5	174.2	158.8	0.0	162.4	117.2	177.3	157.5	144.8	147.7	109.57	November "
ታህሳስ 2012	157.8	177.6	156.1	0.0	163.4	117.7	184.0	139.7	144.8	146.4	108.26	December "
ጥር 2012	158.5	176.2	159.8	0.0	161.0	117.7	181.0	140.7	144.8	169.7	109.22	January 2020
የከተት 2012	159.3	178.8	159.3	0.0	161.0	117.8	182.4	141.3	144.8	152.2	115.97	February "
መጋቢት 2012	159.9	173.3	168.4	0.0	161.0	117.6	185.8	147.1	148.2	149.3	132.26	March "
ሚያዝያ 2012	166.1	184.9	161.2	0.0	167.5	117.8	185.3	157.2	116.8	170.3	130.00	April "
ግንቦት 2012	170.6	194.9	159.4	0.0	162.0	118.0	190.7	166.5	116.8	164.1	124.49	May "
ሰኔ 2012	182.3	194.7	178.6	0.0	165.4	118.0	186.3	213.0	154.7	177.4	127.58	June "
2013												2020/2021
ሐምሌ 2012	190.3	210.3	179.5	0.0	165.7	118.1	170.1	227.0	116.8	182.7	126.80	July 2020
ነሐሴ 2012	190.7	207.3	179.5	0.0	166.1	118.2	166.3	229.0	122.4	211.5	126.08	August "
መስከረም 2013	188.2	205.5	180.4	0.0	165.3	118.3	162.5	221.6	122.4	204.5	123.15	September "
ጥቅምት 2013	195.0	217.8	181.3	0.0	165.3	118.3	189.6	217.6	177.0	207.7	124.69	October "
ሀዳር 2013	192.7	221.1	180.6	0.0	191.1	118.7	184.4	185.5	150.2	200.4	126.47	November "
ታህሳስ 2013	189.5	219.9	179.7	0.0	183.5	118.7	183.1	175.1	150.2	196.6	127.54	December "
ጥር 2013	191.2	219.6	178.9	0.0	186.0	118.7	185.5	183.4	150.2	199.7	130.56	January 2021
የከተት 2013	191.5	222.8	186.5	0.0	186.0	118.4	207.4	169.2	150.2	203.9	129.30	February "
መጋቢት 2013	196.8	227.6	186.0	0.0	189.6	118.4	260.3	170.2	179.3	221.1	142.13	March "
ሚያዝያ 2013	194.2	219.9	196.3	0.0	191.1	119.3	246.4	176.2	142.8	222.1	132.70	April "

ሠንጠረዥ 10A፤ ጠቅላላ የምግብ የሽያጭ ዋጋ መመዘኛ ለንዲክስና በሥራ የተካተቱ ክፍሎች ለአድሚኒስትሬሽን ክፍል የሚገለጹት ስራዎች  
 ታህሳስ 2009 = 100

Table 10b: General Food Consumer Price Index and Its Components for Oromia National Regional State  
 December 2016 = 100

ወርና ዓመት	ዕቃዎች ስርዓት											ወርና ዓመት
	ምግብና አልኮሎሊክ ያልሆኑ መጠቀሻዎች	ግብና ለሀይ	ሥጋ	ገብና የባህር ምግቦች	ወተት አይብና ዕንቁላል	ዘይትና ቅባቶች	ፍሬዎች	አትክልትና ጥሬ-ጥሬ	ስኳር ማርና ፍክላት	ሌሎች ምግቦች	አልኮሎሊክ ያልሆኑ መጠቀሻዎች	
Month an Year	Food and Non-Alcoholic Beverages	Bread and Cereals	Meat (ND)	Fish and Seafood	Milk, cheese and eggs (ND)	Oils and fats (ND)	Fruit (ND)	Vegetables	Sugar, jam, honey, chocolate.	Food products n.e.c. (ND)	Non-Alcoholic Beverages and coffee	Month an Year
ታህሳስ 2009	100.0	100.0	100.0	0.0	100.0	100.0	100.0	100.0	100.0	100.0	100.0	December 2016
ሐምሌ 2009 - ሰኔ 2010	116.5	127.3	115.5	0.0	119.1	86.9	135.8	117.9	82.3	134.0	102.8	July 2017 - June 2018
ሐምሌ 2009 - ሰኔ 2010	129.8	141.9	134.9	0.0	142.5	86.1	153.2	137.7	79.6	148.6	107.2	July 2018 - June 2019
ሐምሌ 2011 - ሰኔ 2012	160.8	185.6	164.4	0.0	156.7	93.4	186.7	185.2	86.8	166.9	119.0	July 2019 - June 2020
2011												2018/2019
ሐምሌ 2010	122.1	135.8	127.0	0.0	130.7	79.3	143.4	120.8	71.7	142.3	112.5	July 2018
ነሐሴ 2010	123.5	136.9	128.2	0.0	134.0	84.3	148.5	119.9	77.5	146.3	111.4	August "
መስከረም 2011	125.6	137.2	130.0	0.0	139.4	83.0	146.7	128.0	75.5	147.2	110.7	September "
ጥቅምት 2011	125.1	137.4	130.0	0.0	140.7	87.1	148.6	124.1	78.7	142.6	111.3	October "
ሀዳር 2011	123.6	136.7	128.0	0.0	133.6	82.6	148.4	123.8	73.0	144.0	110.2	November "
ታህሳስ 2011	124.7	137.6	129.3	0.0	136.6	85.8	149.3	126.3	77.8	143.4	107.4	December "
ጥር 2011	126.3	137.5	134.4	0.0	140.5	85.9	150.2	132.5	76.6	148.7	101.3	January 2019
የከተማ 2011	127.6	138.0	136.0	0.0	143.7	84.3	153.7	132.7	80.4	157.5	102.2	February "
መጋቢት 2011	130.0	140.5	134.7	0.0	144.8	81.3	155.2	142.9	81.9	151.9	103.3	March "
ሚያዝያ 2011	136.8	148.3	134.0	0.0	146.2	89.9	157.6	158.1	84.5	149.1	104.4	April "
ግንቦት 2011	145.3	155.8	152.1	0.0	159.8	94.2	165.0	173.2	88.3	153.5	104.4	May "
ሰኔ 2011	147.1	160.6	155.2	0.0	159.8	96.0	171.5	170.5	89.1	156.1	106.6	June "
2012												2019/2020
ሐምሌ 2011	148.6	168.7	151.2	0.0	150.0	106.1	174.2	162.6	94.2	155.1	109.3	July 2019
ነሐሴ 2011	153.2	175.7	160.1	0.0	153.4	84.8	180.9	175.6	97.2	161.7	113.0	August "
መስከረም 2012	154.9	177.1	164.3	0.0	155.3	86.8	189.4	180.6	85.6	160.6	112.2	September "
ጥቅምት 2012	155.0	180.6	160.5	0.0	153.2	86.3	188.4	178.3	82.8	158.6	113.4	October "
ሀዳር 2012	156.0	187.8	161.7	0.0	153.5	85.9	189.0	171.9	84.4	158.0	114.1	November "
ታህሳስ 2012	153.3	181.0	165.4	0.0	147.3	92.6	188.7	166.8	86.4	158.3	114.1	December "
ጥር 2012	153.6	177.5	163.2	0.0	152.6	86.9	188.8	171.0	81.6	164.1	118.3	January 2020
የከተማ 2012	160.7	180.5	164.1	0.0	163.1	89.9	189.5	190.2	86.4	169.6	120.6	February "
መጋቢት 2012	167.9	188.9	163.9	0.0	158.0	108.4	190.8	195.3	83.1	180.5	127.1	March "
ሚያዝያ 2012	171.3	200.7	170.1	0.0	162.4	94.9	190.8	200.2	82.8	175.5	125.7	April "
ግንቦት 2012	173.6	203.3	173.9	0.0	168.5	92.8	190.8	201.3	90.7	179.8	127.9	May "
ሰኔ 2012	181.5	205.2	173.8	0.0	163.7	104.9	179.5	228.3	86.5	181.5	131.9	June "
2013												2020/2021
ሐምሌ 2012	188.8	211.3	172.7	0.0	162.1	103.6	187.8	244.9	85.8	196.7	136.6	July 2020
ነሐሴ 2012	186.8	217.2	172.1	0.0	164.7	100.8	186.3	222.6	86.4	192.9	149.2	August "
መስከረም 2013	187.3	224.6	178.1	0.0	172.2	102.5	188.0	208.5	82.6	194.5	150.1	September "
ጥቅምት 2013	190.3	227.2	175.8	0.0	169.7	107.2	187.6	214.5	86.9	197.3	152.8	October "
ሀዳር 2013	190.0	225.9	175.6	0.0	169.4	112.1	184.7	207.0	95.9	203.4	157.4	November "
ታህሳስ 2013	187.5	221.3	179.1	0.0	172.8	123.1	183.7	199.5	98.4	198.3	152.9	December "
ጥር 2013	190.4	221.1	181.3	0.0	173.2	118.4	189.8	213.7	97.5	200.9	152.6	January 2021
የከተማ 2013	198.9	234.0	180.0	0.0	187.6	128.5	186.4	218.8	97.7	212.2	155.3	February "
መጋቢት 2013	206.3	244.5	187.9	0.0	203.9	134.4	189.5	221.1	103.7	227.8	153.9	March "
ሚያዝያ 2013	209.2	250.3	185.2	0.0	210.6	133.5	194.4	220.3	103.2	233.9	157.9	April "

ሠንጠረዥ 11A፤ ጠቅላላ የምግብ የሽያጭ ዋጋ መመዘኛ ለንዲክስና በሥራ የተካተቱ ክፍሎች ለደቡብ ብሔራዊ አልላዊ መንግስት  
 ታህሳስ 2009 = 100

Table 11b: General Food Consumer Price Index and Its Components for SNNP National Regional State  
 December 2016 = 100

ወርና ዓመት	ዕቃዎች ስርዓት											ወርና ዓመት
	ምግብና አልኮሎሊክ ያልሆኑ መጠቦች	ግብና ለሀላ	ሥጋ	አሰና የባህር ምግቦች	ወተት አይብና ዕንቁላል	ዘይትና ቅባቶች	ፍራፍሬ	አትክልትና ጥራጥሬ	ስኳር ማርና ፍክላት	ሌሎች ምግቦች	አልኮሎሊክ ያልሆኑ መጠቦች	
Month an Year	Food and Non-Alcoholic Beverages	Bread and Cereals	Meat (ND)	Fish and Seafood	Milk, cheese and eggs (ND)	Oils and fats (ND)	Fruit (ND)	Vegetables	Sugar, jam, honey, chocolate.	Food products n.e.c. (ND)	Non-Alcoholic Beverages and coffee	Month an Year
ታህሳስ 2009	100.0	100.0	100.0	0.0	100.0	100.0	100.0	100.0	100.0	100.0	100.0	December 2016
ሐምሌ 2009 - ሰኔ 2010	120.5	128.4	121.2	0.0	118.8	113.2	131.8	117.9	102.9	119.1	116.3	July 2017 - June 2018
ሐምሌ 2009 - ሰኔ 2010	132.1	140.3	143.7	0.0	136.8	120.3	147.6	137.0	103.0	131.9	122.3	July 2018 - June 2019
ሐምሌ 2011 - ሰኔ 2012	164.5	172.6	180.8	0.0	161.5	137.5	196.7	166.0	122.2	143.4	144.6	July 2019 - June 2020
2011												2018/2019
ሐምሌ 2010	129.3	139.1	139.0	0.0	128.8	116.8	130.0	121.0	100.8	133.7	132.0	July 2018
ነሐሴ 2010	129.6	139.3	137.5	0.0	127.0	117.9	123.5	125.8	100.9	132.5	135.0	August "
መስከረም 2011	129.6	135.0	138.5	0.0	126.5	119.7	136.6	128.9	100.9	130.2	135.9	September "
ጥቅምት 2011	128.6	132.6	136.4	0.0	131.7	117.9	148.5	126.3	100.7	131.4	133.6	October "
ሀዳር 2011	128.8	133.8	137.9	0.0	132.2	118.3	145.1	126.3	101.2	131.6	120.3	November "
ታህሳስ 2011	128.2	133.4	139.3	0.0	133.8	118.6	149.6	127.6	101.1	133.4	113.4	December "
ጥር 2011	128.0	134.2	141.8	0.0	135.0	121.3	150.2	131.2	101.1	130.8	111.6	January 2019
የከተማ 2011	128.5	136.6	142.7	0.0	140.1	119.7	149.0	137.8	101.4	129.7	112.9	February "
መጋቢት 2011	130.5	137.0	140.0	0.0	140.7	120.2	155.2	147.0	102.4	129.2	115.4	March "
ሚያዝያ 2011	135.8	149.3	143.3	0.0	143.0	124.5	154.0	151.7	104.0	130.9	115.9	April "
ግንቦት 2011	143.4	154.6	163.3	0.0	144.1	125.3	171.6	160.3	107.2	133.5	120.5	May "
ሰኔ 2011	145.4	159.1	165.1	0.0	158.2	123.7	158.2	160.0	114.7	136.1	121.2	June "
2012												2019/2020
ሐምሌ 2011	150.2	165.2	170.4	0.0	152.3	126.4	156.9	156.0	114.2	138.0	127.7	July 2019
ነሐሴ 2011	152.2	172.1	169.6	0.0	154.1	129.8	162.2	162.5	116.8	136.6	131.2	August "
መስከረም 2012	157.1	171.6	173.9	0.0	154.9	137.4	176.0	165.0	123.5	136.8	135.8	September "
ጥቅምት 2012	160.2	169.4	174.6	0.0	156.8	138.3	189.9	160.5	120.8	139.1	143.5	October "
ሀዳር 2012	160.0	163.0	177.2	0.0	163.1	134.0	211.6	160.5	119.6	140.4	138.2	November "
ታህሳስ 2012	156.5	158.6	171.0	0.0	162.2	132.3	193.3	161.1	121.7	135.7	137.8	December "
ጥር 2012	157.4	159.9	178.8	0.0	168.2	137.3	196.5	158.4	121.3	143.8	138.0	January 2020
የከተማ 2012	162.5	165.2	180.3	0.0	167.1	136.1	216.9	169.1	121.7	139.1	141.3	February "
መጋቢት 2012	168.4	171.5	189.3	0.0	159.6	137.1	210.2	168.7	122.9	147.9	153.1	March "
ሚያዝያ 2012	179.3	185.3	195.0	0.0	163.0	144.5	226.2	176.9	127.6	151.2	155.8	April "
ግንቦት 2012	183.1	192.7	193.6	0.0	167.8	148.3	208.2	170.6	128.3	153.9	166.0	May "
ሰኔ 2012	186.9	196.9	195.7	0.0	169.6	148.2	212.4	182.1	127.3	159.0	167.3	June "
2013												2020/2021
ሐምሌ 2012	191.2	197.2	196.1	0.0	171.6	153.4	205.6	181.9	122.3	170.1	170.3	July 2020
ነሐሴ 2012	195.9	207.3	194.6	0.0	166.1	152.6	180.4	191.9	121.2	187.3	176.8	August "
መስከረም 2013	201.3	213.3	201.8	0.0	175.2	155.0	179.5	192.9	126.4	205.2	186.1	September "
ጥቅምት 2013	204.2	210.5	204.7	0.0	179.6	152.6	193.0	191.6	124.8	215.0	194.7	October "
ሀዳር 2013	203.2	210.5	201.0	0.0	185.4	154.9	201.8	187.9	141.4	216.2	190.0	November "
ታህሳስ 2013	199.4	210.0	200.7	0.0	183.7	164.0	193.0	181.6	151.5	202.8	175.4	December "
ጥር 2013	203.4	213.2	205.5	0.0	191.6	169.4	205.0	198.2	148.7	212.5	170.3	January 2021
የከተማ 2013	212.3	228.2	206.6	0.0	198.3	179.6	219.4	202.7	151.8	220.4	179.1	February "
መጋቢት 2013	219.0	239.3	208.1	0.0	202.5	182.2	208.6	217.7	149.8	224.0	185.3	March "
ሚያዝያ 2013	230.9	252.5	209.3	0.0	193.9	200.7	224.0	215.5	152.3	256.6	193.3	April "

ሠንጠረዥ 12A፤ ጠቅላላ የምግብ የሽያጭ ዋጋ መመዘኛ ሊንዲክስና በሥራ የተካተቱ ክፍሎች ለሱማሌ ብሔራዊ አልላዊ መንግስት  
 ታህሳስ 2009 = 100

Table 12b: General Food Consumer Price Index and Its Components for Somali National Regional State  
 December 2016 = 100

ወርና ዓመት	ዕቃዎች ስርዓት											ወርና ዓመት
	ምግብና አልኮሎሊክ ያልሆኑ መጠቀሻ	ዳቦና ለሀላ	ሥጋ	አሰና የባህር ምግቦች	ወተት አይብና ዕንቁላል	ዘይትና ቅባቶች	ፍራፍሬ	አትክልትና ጥራጥሬ	ስኳር ማርና ጅክሊት	ሌሎች ምግቦች	አልኮሎሊክ ያልሆኑ መጠቀሻ	
Month an Year	Food and Non-Alcoholic Beverages	Bread and Cereals	Meat (ND)	Fish and Seafood	Milk, cheese and eggs (ND)	Oils and fats (ND)	Fruit (ND)	Vegetables	Sugar, jam, honey, chocolate.	Food products n.e.c. (ND)	Non-Alcoholic Beverages and coffee	Month an Year
ታህሳስ 2009	100.0	100.0	100.0	0.0	100.0	100.0	100.0	100.0	100.0	100.0	100.0	December 2016
ሐምሌ 2009 - ሰኔ 2010	113.7	119.3	118.1	0.0	99.7	100.3	118.3	136.5	105.3	139.3	103.2	July 2017 - June 2018
ሐምሌ 2009 - ሰኔ 2010	132.5	140.2	128.3	0.0	116.1	107.0	123.7	139.4	134.5	164.8	112.2	July 2018 - June 2019
ሐምሌ 2011 - ሰኔ 2012	159.4	179.4	165.4	0.0	134.6	124.7	145.3	196.3	126.4	205.3	129.2	July 2019 - June 2020
2011												2018/2019
ሐምሌ 2010	126.1	138.1	122.0	0.0	105.4	101.1	134.0	142.5	116.6	147.5	116.7	July 2018
ነሐሴ 2010	130.0	139.4	122.1	0.0	116.9	101.1	131.1	118.3	136.1	146.2	107.9	August "
መስከረም 2011	130.8	137.9	114.8	0.0	117.2	101.2	122.2	142.9	136.1	147.9	111.1	September "
ጥቅምት 2011	128.5	137.6	120.9	0.0	106.6	100.7	116.3	131.5	136.1	145.7	119.3	October "
ሀዳር 2011	128.3	138.0	109.6	0.0	107.6	100.8	116.9	130.2	136.1	147.9	110.7	November "
ታህሳስ 2011	128.9	137.9	123.0	0.0	110.5	101.0	117.9	124.7	136.1	149.3	112.9	December "
ጥር 2011	131.3	138.6	123.0	0.0	112.2	109.8	120.0	131.5	136.1	177.3	108.8	January 2019
የከተት 2011	131.3	136.3	131.0	0.0	115.0	113.6	120.0	132.2	136.1	177.4	108.7	February "
መጋቢት 2011	133.2	137.7	144.2	0.0	122.3	114.6	124.9	130.2	136.1	172.6	108.7	March "
ሚያዝያ 2011	135.3	138.8	129.6	0.0	126.5	117.0	112.3	142.6	136.1	184.6	109.5	April "
ግንቦት 2011	141.4	148.7	146.5	0.0	127.0	109.2	127.7	166.9	136.1	186.4	108.7	May "
ሰኔ 2011	145.2	153.3	152.7	0.0	125.7	114.3	141.5	179.0	136.1	195.0	122.8	June "
2012												2019/2020
ሐምሌ 2011	149.9	160.8	166.5	0.0	130.1	125.0	144.0	171.6	136.1	195.3	118.3	July 2019
ነሐሴ 2011	153.5	164.6	164.2	0.0	132.4	126.2	146.3	188.1	136.1	201.0	129.6	August "
መስከረም 2012	161.8	172.6	146.5	0.0	162.1	126.2	154.2	195.9	136.1	202.3	126.6	September "
ጥቅምት 2012	161.1	178.5	147.9	0.0	138.1	123.2	143.0	209.7	136.1	197.0	126.6	October "
ሀዳር 2012	164.0	191.6	161.4	0.0	121.8	122.1	153.3	195.6	136.1	203.0	127.1	November "
ታህሳስ 2012	161.9	186.7	158.7	0.0	127.0	122.4	136.5	184.7	136.1	202.3	131.5	December "
ጥር 2012	160.5	188.9	160.9	0.0	126.6	131.6	138.8	182.0	116.6	215.7	127.4	January 2020
የከተት 2012	156.3	178.5	167.4	0.0	135.9	126.7	143.0	172.5	116.6	204.7	132.2	February "
መጋቢት 2012	159.4	182.2	165.3	0.0	138.9	125.0	147.9	189.1	116.6	207.1	133.7	March "
ሚያዝያ 2012	163.1	187.7	175.4	0.0	139.1	125.4	154.5	198.0	116.6	210.7	138.5	April "
ግንቦት 2012	161.5	183.7	184.4	0.0	137.6	112.3	135.0	219.1	116.6	214.7	130.2	May "
ሰኔ 2012	160.0	177.5	185.8	0.0	126.1	129.7	146.6	248.9	116.6	210.0	129.0	June "
2013												2020/2021
ሐምሌ 2012	162.9	176.6	187.8	0.0	124.5	130.0	150.4	294.9	116.6	218.4	135.5	July 2020
ነሐሴ 2012	169.2	186.2	185.5	0.0	153.6	133.0	144.3	256.1	116.6	214.1	134.3	August "
መስከረም 2013	166.8	186.2	184.1	0.0	149.5	136.4	141.2	237.8	116.6	193.3	130.3	September "
ጥቅምት 2013	165.9	184.7	182.3	0.0	158.6	137.1	147.5	211.4	116.6	192.4	130.1	October "
ሀዳር 2013	166.5	183.4	184.8	0.0	166.9	140.3	149.1	206.1	116.6	193.3	125.9	November "
ታህሳስ 2013	170.1	194.1	182.6	0.0	158.4	140.4	148.7	209.4	116.6	192.3	127.4	December "
ጥር 2013	177.3	199.1	191.2	0.0	182.5	148.6	143.5	216.7	116.6	185.9	127.1	January 2021
የከተት 2013	183.2	206.0	184.7	0.0	207.9	137.8	144.5	211.5	116.6	187.1	131.6	February "
መጋቢት 2013	182.4	216.9	179.3	0.0	215.1	40.2	166.7	209.7	116.6	196.0	140.3	March "
ሚያዝያ 2013	201.7	251.9	184.2	0.0	229.1	40.2	132.7	234.6	116.6	194.8	138.8	April "

ደንበኞች 13A፤ ጠቅላላ የምግብ የሽያጭ ዋጋ መመዘኛ ለንዲክስና በሥራ የተካተቱ ክፍሎች ለትግራይ ብሔራዊ ክልላዊ መንግስት  
 ታህሳስ 2009 = 100

Table 13b: General Food Consumer Price Index and Its Components for Tigray National Regional State  
 December 2016 = 100

ወርና ዓመት	ደንበኞች   ጠቅላላ											ወርና ዓመት
	ምግብና አልኮኮል ያልሆኑ መጠቀሻ	ግብና ለሀላ	ሥጋ	አሰና የባህር ምግቦች	ወተት አይብና ዕንቁላል	ዘይትና ቅባቶች	ፍራፍሬ	አትክልትና ጥራጥራ	ስኳር ማርና ጅኮሊት	ሌሎች ምግቦች	አልኮኮል ያልሆኑ መጠቀሻ	
Month an Year	Food and Non-Alcoholic Beverages	Bread and Cereals	Meat (ND)	Fish and Seafood	Milk, cheese and eggs (ND)	Oils and fats (ND)	Fruit (ND)	Vegetables	Sugar, jam, honey, chocolate.	Food products n.e.c. (ND)	Non-Alcoholic Beverages and coffee	Month an Year
ታህሳስ 2009	100.0	100.0	100.0	0.0	100.0	100.0	100.0	100.0	100.0	100.0	100.0	December 2016
ሐምሌ 2009 - ሰኔ 2010	118.0	126.4	128.0	0.0	119.0	103.6	108.9	107.8	95.9	113.0	106.4	July 2017 - June 2018
ሐምሌ 2009 - ሰኔ 2010	145.4	168.4	155.2	0.0	145.7	106.3	139.6	122.3	95.2	148.0	111.9	July 2018 - June 2019
ሐምሌ 2011 - ሰኔ 2012	183.4	210.0	201.5	0.0	183.4	131.5	155.9	175.0	104.8	166.6	130.8	July 2019 - June 2020
2011												2018/2019
ሐምሌ 2010	133.9	154.1	146.3	0.0	132.2	105.0	111.0	110.1	93.3	129.6	111.6	July 2018
ነሐሴ 2010	131.6	146.7	143.7	0.0	141.0	105.3	111.9	103.4	93.3	145.0	110.3	August "
መስከረም 2011	141.6	158.0	156.9	0.0	143.6	98.1	113.8	125.8	93.3	145.0	111.8	September "
ጥቅምት 2011	144.4	170.6	147.9	0.0	149.5	104.9	139.8	122.3	93.3	144.5	110.3	October "
ሀዳር 2011	145.4	170.2	155.1	0.0	151.1	107.1	140.3	120.0	93.3	145.9	110.3	November "
ታህሳስ 2011	144.4	170.4	151.5	0.0	137.8	106.9	141.2	123.3	93.9	139.6	109.7	December "
ጥር 2011	143.9	169.5	147.6	0.0	146.4	106.0	143.9	117.9	93.9	148.4	112.3	January 2019
የካቲት 2011	143.6	166.2	149.9	0.0	152.8	107.2	145.9	118.7	93.9	150.6	111.1	February "
መጋቢት 2011	149.0	174.4	158.8	0.0	134.5	107.0	147.5	119.2	93.9	161.8	111.5	March "
ሚያዝያ 2011	151.2	180.1	161.1	0.0	134.0	104.1	145.8	123.0	95.3	154.8	113.2	April "
ግንቦት 2011	157.0	179.2	167.9	0.0	157.7	112.1	150.2	142.7	102.6	156.0	115.3	May "
ሰኔ 2011	159.4	181.6	175.8	0.0	167.5	111.9	183.8	141.0	102.8	155.3	115.6	June "
2012												2019/2020
ሐምሌ 2011	166.4	193.6	183.0	0.0	180.7	108.9	165.6	149.6	104.9	155.4	116.0	July 2019
ነሐሴ 2011	172.8	199.9	184.4	0.0	179.1	110.5	157.5	171.2	103.1	159.1	113.3	August "
መስከረም 2012	175.5	200.7	190.4	0.0	182.3	115.7	117.4	183.0	105.0	152.3	114.1	September "
ጥቅምት 2012	177.5	208.2	194.7	0.0	196.8	120.2	157.9	175.7	104.1	143.2	115.3	October "
ሀዳር 2012	174.9	204.4	194.3	0.0	196.5	120.5	156.4	164.0	104.6	149.3	117.1	November "
ታህሳስ 2012	172.9	200.6	204.0	0.0	173.7	124.6	161.4	153.6	104.2	146.8	119.7	December "