

በኢትዮጵያ ፌዴራላዊ ዲሞክራሲያዊ ሪፐብሊክ በፕላንና ልማት ሚኒስቴር

## የኢትዮጵያ ስታቲስቲክስ አገልግሎት



THE FEDERAL DEMOCRATIC REPUBLIC OF ETHIOPIA  
DEVELOPMENT AND PLAN MINISTER  
ETHIOPIAN STATISTICS SERVICE

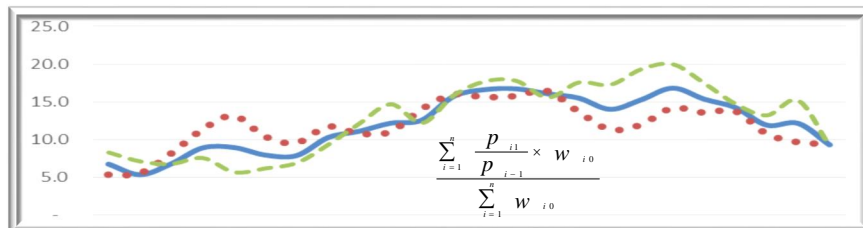
የአገር አቀፍና የክልሎች የግፕ ችች ዋጋ መመዘኛ ኢንዱክሶች

**የግንቦት ወር 2015 ዓ.ም.**

[ታህሳስ 2009= 100]

መረጃ ቁጥር 54

### COUNTRY AND REGIONAL LEVEL CONSUMER PRICE INDICES (CPI)



[December 2016=100]

For the month of **MAY 2023**

Information No. 54

Tel: 251-11-1 553011

Fax: 251-11-1550334.

Web-site: <https://www.statsethiopia.gov.et>

አዲስ አበባ

ግንቦት 28 ነገ 2015 ፡.ሀ.

ADDIS ABABA

05 June 2023

መግቢያ ..... 1

የዋጋ ዋጋ ግሽበት ሁኔታ ..... 8

ሠንጠረዥ ሐ: በአገር አቀፍ ደረጃ የ12 ወር ተንከባላይ አማካይ የዋጋ ግሽበት ሁኔታ ..10

ሠንጠረዥ መ: የዘንድሮውና የአምናው ተመሳሳይ ወሮች የሽማግሌት ዋጋ መመዘኛ  
 ኢንዱስትሪ ለውጥ ንፅፅር በአገር አቀፍ ደረጃ ማጠቃለያ ..... 11

ሠንጠረዥ ሠ: የአሁኑና ያለፈው ወር የሽማግሌት ዋጋ መመዘኛ ኢንዱስትሪ ንጽጽር  
 በአገር አቀፍ ደረጃ ማጠቃለያ ..... 13

**የሠንጠረዦች ዝርዝር**

ሠንጠረዥ ሀ: በጥናቱ የተሸፈኑ ገበያዎችና በኢንዱስትሪ ማዕቀፍ የተካተቱ ዕቃዎችና  
 በዕቃዎች/አገልግሎቶች ብዛት በክልል ..... 3

ሠንጠረዥ 1ሀ: ጠቅላላ የሽማግሌት ዋጋ መመዘኛ ኢንዱስትሪና በስሩ የተካተቱ ክፍሎች  
 በአገር አቀፍ ደረጃ ..... 17

ሠንጠረዥ 1ለ: ጠቅላላ ምግብና የምግብ ክፍሎች የሽማግሌት ዋጋ መመዘኛ  
 ኢንዱስትሪ በአገር አቀፍ ደረጃ .....18

ሠንጠረዥ 1ሐ: አገር አቀፍ የቤት ኪራይ፣ የቤት መስሪያ እቃዎች፣ ውሃና ኢነርጂ  
 የሽማግሌት ዋጋ መመዘኛ ኢንዱስትሪ ..... 19

ሠንጠረዥ 2ሀ: ጠቅላላ የሽማግሌት ዋጋ መመዘኛ ኢንዱስትሪ  
 በአገር አቀፍና በክልሎች ደረጃ..... 20

ሠንጠረዥ 2ለ: የምግብ ዋጋ መመዘኛ ኢንዱስትሪ ማጠቃለያ በአገር አቀፍ  
 እና በክልሎች ደረጃ .....22

ሠንጠረዥ 3ሀ: ጠቅላላ የሽማግሌት ዋጋ መመዘኛ ኢንዱስትሪና በስሩ የተካተቱ  
 ክፍሎች ለአዲስ አበባ ከተማ መስተዳደር.....24

ሠንጠረዥ 3ለ: ጠቅላላ ምግብና የምግብ ክፍሎች የሽማግሌት ዋጋ መመዘኛ  
 ኢንዱስትሪ ለአዲስ አበባ ከተማ መስተዳድር..... 25

ሠንጠረዥ 4ሀ: ጠቅላላ የሽማግሌት ዋጋ መመዘኛ ኢንዱስትሪና በስሩ የተካተቱ  
 ክፍሎች ለአፋር ክልላዊ መንግስት..... 26

ሠንጠረዥ 4ለ: ጠቅላላ ምግብና የምግብ ክፍሎች የሽማግሌት ዋጋ መመዘኛ  
 ኢንዱስትሪ ለአፋር ክልላዊ መንግስት..... 27

ሠንጠረዥ 5ሀ: ጠቅላላ የሽማግሌት ዋጋ መመዘኛ ኢንዱስትሪና በስሩ የተካተቱ

ክፍሎች አማራ ክልላዊ መንግስት.....	28
ሠንጠረዥ 5ለ: ጠቅላላ ምግብና የምግብ ክፍሎች የሽማግሌት ዋጋ መመዘኛ	
ኢንዱስትሪ ለአማራ ክልላዊ መንግስት.....	29
ሠንጠረዥ 6ሀ: ጠቅላላ የሽማግሌት ዋጋ መመዘኛ ኢንዱስትሪ በስሩ የተካተቱ	
ክፍሎች ለቤንሻንጉል-ጉሙዝ ክልላዊ መንግስት.....	30
ሠንጠረዥ 6ለ: ጠቅላላ ምግብና የምግብ ክፍሎች የሽማግሌት ዋጋ መመዘኛ	
ለቤንሻንጉል-ጉሙዝ ክልላዊ መንግስት .....	31
ሠንጠረዥ7ሀ: ጠቅላላ የሽማግሌት ዋጋ መመዘኛ ኢንዱስትሪ በስሩ የተካተቱ	
ክፍሎች ለድሬድዋ አስተዳደር ካውንስል .....	32
ሠንጠረዥ 7ለ: ጠቅላላ ምግብና የምግብ ክፍሎች የሽማግሌት ዋጋ መመዘኛ	
ለድሬድዋ አስተዳደር ካውንስል.....	33
ሠንጠረዥ 8ሀ: ጠቅላላ የሽማግሌት ዋጋ መመዘኛ ኢንዱስትሪ በስሩ የተካተቱ	
ክፍሎች ለጋምቤላ ህዝቦች ክልላዊ መንግስት .....	34
ሠንጠረዥ 8ለ: ጠቅላላ ምግብና የምግብ ክፍሎች የሽማግሌት ዋጋ መመዘኛ	
ለጋምቤላ ህዝቦች ክልላዊ መንግስት.....	35
ሠንጠረዥ 9ሀ: ጠቅላላ የሽማግሌት ዋጋ መመዘኛ ኢንዱስትሪና በስሩ የተካተቱ ክፍሎች	
ለሐረሪ ህዝብ ክልላዊ መንግስት.....	36
ሠንጠረዥ 9ለ: ጠቅላላ ምግብና የምግብ ክፍሎች የሽማግሌት ዋጋ መመዘኛ	
ኢንዱስትሪ ለሐረሪ ህዝብ ክልላዊ መንግስት.....	37
ሠንጠረዥ10ሀ: ጠቅላላ የሽማግሌት ዋጋ መመዘኛ ኢንዱስትሪና በስሩ የተካተቱ	
ክፍሎች ለኦሮሚያ ክልላዊ መንግስት.....	38
ሠንጠረዥ 10ለ: ጠቅላላ ምግብና የምግብ ክፍሎች የሽማግሌት ዋጋ መመዘኛ	
ኢንዱስትሪ ለኦሮሚያ ክልላዊ መንግስት.....	39
ሠንጠረዥ 11ሀ: ጠቅላላ የሽማግሌት ዋጋ መመዘኛ ኢንዱስትሪና በስሩ የተካተቱ	
ክፍሎች ለደ.ኢ.ብ.ብ.ሀ ክልላዊ መንግስት.....	40
ሠንጠረዥ11 ለ: ጠቅላላ ምግብና የምግብ ክፍሎች የሽማግሌት ዋጋ መመዘኛ	
ኢንዱስትሪ ለደ.ኢ.ብ.ብ.ሀ ክልላዊ መንግስት .....	41
ሠንጠረዥ 12ሀ: ጠቅላላ የሽማግሌት ዋጋ መመዘኛ ኢንዱስትሪ በስሩ የተካተቱ	
ክፍሎች ለሶማሌ ክልላዊ መንግስት .....	42
ሠንጠረዥ 12ለ: ጠቅላላ ምግብና የምግብ ክፍሎች የሽማግሌት ዋጋ መመዘኛ	

ኢንዱስትሪ ለሰማሌ ክልላዊ መንግስት.....	43
ሠንጠረዥ 13ሀ: ጠቅላላ የሸማቾች ዋጋ መመዘኛ ኢንዱስትሪና በስሩ የተካተቱ ክፍሎች ለትግራይ ክልላዊ መንግስት.....	44
ሠንጠረዥ 13ለ: ጠቅላላ ምግብና የምግብ ክፍሎች የሸማቾች ዋጋ መመዘኛ ኢንዱስትሪ ለትግራይ ክልላዊ መንግስት .....	45

# CONTENTS

	<b>Page</b>
Introduction.....	5
Inflation Rate.....	8
Comparison of CPI Movements, Current Vs Last Year's Similar Months, at country Level.....	11
Comparison of CPI Movements, Current Vs Last Month, at country and Regional Levels.....	13

## LIST OF TABLES

Table a: Number of Markets Covered and Basket of Commodities by Region.....	3
Table 1a: General Consumer Price Index and Its Components at Country Level.....	17
Table 1b: Consumer Price Index of Total Food and Its Components at Country Level.....	18
Table 1c: Consumer Price Index of House Rent, Construction Materials, Water, Fuel and Power and Its Components at Country Level.....	19
Table 2a: Summary of General Consumer Price Indices at Country and Regional Levels.....	20
Table 2b: Summary of Consumer Price Indices of Food at Country and Regional Levels.....	22
Table 3a: General Consumer Price Index and Its	

Components for the City of Addis Ababa Administration.....	24
Table 3b: Consumer Price Index of Total Food and Its	
<i>Components for the City of Addis Ababa Administration.....</i>	<i>25</i>
Table 4a: General Consumer Price Index and Its	
Components for the Afar Regional State.....	26
Table 4b: Consumer Price Index of Total Food and Its	
Components for the Afar Regional State.....	27
Table 5a: General Consumer Price Index and Its	
Components for the Amhara Regional State.....	28
Table 5b: Consumer Price Index of Total Food and Its	
Components for the Amhara Regional State.....	29
Table 6a: General Consumer Price Index and Its	
Components for the Benishangul-Gumuz Regional State.....	30
Table 6b: Consumer Price Index of Total Food and Its	
<i>Components for the Benishangul-Gumuz Regional State.....</i>	<i>31</i>
Table 7a: General Consumer Price Index and Its	
Components for the Dire Dawa Administrative Council.....	32
Table 7b: Consumer Price Index of Total Food and Its	
<i>Components for the Dire Dawa Administrative Council.....</i>	<i>33</i>
Table 8a: General Consumer Price Index and Its	
Components for the Gambela Peoples Regional State.....	34
Table 8b: Consumer Price Index of Total Food and Its	
<i>Components for the Gambela Peoples Regional State.....</i>	<i>35</i>
Table 9a: General Consumer Price Index and Its	
Components for the Harari Peoples Regional State.....	36

Table 9b: Consumer Price Index of Total Food and Its Components for the Harari Peoples Regional State.....	37
Table 10a: General Consumer Price Index and Its Components for the Oromia Regional State.....	38
Table 10b: Consumer Price Index of Total Food and Its Components for the Oromia Regional State.....	39
Table 11a: General Consumer Price Index and Its Components for the SNNP Regional State.....	40
Table 11b: Consumer Price Index of Total Food and Its Components for the SNNP Regional State.....	41
Table 12a: General Consumer Price Index and Its Components for the Somali Regional State.....	42
Table 12b: Consumer Price Index of Total Food and Its Components for the Somali Regional State.....	43
Table 13a: General Consumer Price Index and Its Components for the Tigray Regional State.....	44
Table 13b: Consumer Price Index of Total Food and Its Components for the Tigray Regional State.....	45

**መግቢያ**

የሽማግሌት ዋጋ መመዘኛ ኢንዱክሽን ማለት ሽማግሌት ለተወሰኑ ዕቃዎችና አገልግሎቶች የክፈሉትን አማካይ የዋጋ ለውጥ ለመለካት የሚያገለግል ጠቋሚ አህዝ ነው። የዋጋ መመዘኛ ኢንዱክሽን አብዛኛውን ጊዜ መሠረት የሚያደርገው የቤተሰብ ገቢ፣ የፍጆታና ወጪ ጥናት ውጤት በሆነው ቤተሰቦች በዕቃዎችና ግልጋሎቶች ላይ ባወጡት የመቶኛ ድርሻ መጠንና የወቅቱ የገበያ ዋጋ ላይ ነው። በዚህ ሪፖርት ውስጥ የተካተቱት 12 ኢንዱክሶች (የ11 ክልሎችና የአገር አቀፍ) መሠረት ያደረጉት የማዕከላዊ ስታቲስቲክስ ኤጀንሲ በ2008 በጀት ዓመት በመላ አገሪቱ በናሙና በተመረጡ ቦታዎች ያካሄደውን የቤተሰብ ገቢ፣ ፍጆታና ወጪ ጥናት ውጤት ነው።

ይህ ታህሳስ ወር 2009 ዓ.ምን መሠረት ያደረገው (ታህሳስ 2009=100) የሽማግሌት ዋጋ መመዘኛ ኢንዱክሽን በክልል ደረጃ ሲዘጋጅ በዓይነቱ ለአራተኛ ጊዜ የተዘጋጀ ሲሆን በታህሳስ 2004 ዓ.ም መሠረት ያደረገውን የሽማግሌት መመዘኛ ኢንዱክሽን የሚተካ ነው። በአገር አቀፍ ደረጃ ከ1988 ጀምሮና በአዲስ አበባ ከተማ ደረጃ ደግሞ ከ1955 ዓ.ም ጀምሮ በየወሩ ተመሳሳይ ኢንዱክሶች የተዘጋጁ ለተጠቃሚዎች ሲሰራጩ መቆየታቸው ይታወቃል። እነዚህ 12 የዋጋ መመዘኛ ኢንዱክሶች በአገሪቱ የሚገኙ 11 ክልሎችና የአገር አቀፍን ሪፖርት ጨምሮ የሚሸፍነው የዕቃዎችና የአገልግሎቶችን ክምችት በያዙ ሁለት ዋና ክፍሎች የተከፈሉ ናቸው። እነሱም፡- የምግብና ምግብ ነክ ያልሆኑ መመዘኛ ኢንዱክሶች ሲሆን ምግብ ነክ ያልሆኑ መመዘኛ ኢንዱክሽን እንደገና በ11 ንዑስ ክፍሎች ይከፈላል። እነዚህም መጠጥ፣ ሲጃራና ትምባሆ፣ ልብስና መጫሚያ፣ የቤት ኪራይ፣ የቤት መስሪያ ዕቃዎች፣ ውሃና ኢነርጅ፣ የቤት ዕቃዎች፣ የቤት ማስጌጫዎች፣ የቤት ቁሳቁስና የቤት ሠራተኛ ደመወዝ፣ ሕክምና፣ ትራንስፖርት፣ መገናኛ፣ መዝናኛና ባህል፣ ትምህርት፣ ሬስቶራንትና ሆቴሎች እንዲሁም ሌሎች ዕቃዎችና አገልግሎቶች ሲሆኑ የሁሉም ክፍሎች አጠቃላይ ውጤት የሚሆነው ደግሞ የጠቅላላ ዋጋዎች መመዘኛ ኢንዱክሽን ነው።

በሁሉም ክልሎች የጠቅላላ ዋጋ መመዘኛ ኢንዱክሶች ስሌት አብዛኛውን የመቶኛ ወጪ ድርሻ የሚይዘው የምግብና አልኮል ያልሆኑ መጠጦች መመዘኛ ኢንዱክሽን ሲሆን በሁሉም የምግብ ዋጋ መመዘኛ ኢንዱክሶች ዋና ዋና ክፍሎች ዳቦና እህል፣ ሥጋ፣ ዓሣና የባህር ምግቦች፣ ወተት፣ አይብና እንቁላል፣ ዘይትና ቅባቶች፣ ፍራፍሬ፣ አትክልትና ጥራጥሬ፣ ስኳር ማርና ቸኮሌት፣ ሌሎች ምግቦችና አልኮል ያልሆኑ መጠጦች ናቸው።

ለዋጋ ኢንዱክሶቹ የተመረጡት ዕቃዎችና አገልግሎቶች የዋጋ መረጃ የሚሰበሰበው በየዞን/በየልዩ ወረዳ በተመረጡ ወካይ ከተሞች ውስጥ ባሉ የገበያ ቦታዎች ነው። በመሆኑም ከእያንዳንዱ ዞን ሁለት ከተሞች (የገበያ ቦታዎች) የተመረጡ ሲሆን እንደዚሁም በእያንዳንዱ ልዩ ወረዳ አንድ ከተማ (የገበያ ቦታ) በጥናቱ እንዲካተት ተደርጓል።



በእነዚህ ከተሞች ውስጥ ተመድበው ለሚሰሩ መረጃ ሰብሳቢዎች በየበጀት ዓመቱ መጨረሻ በመረጃ አሰባሰብ ዘዴው ላይ ስልጠና የሚሰጥ ሲሆን ለአሰባሰቡ የሚረዱ የመስክ መገልገያ መሣሪያዎች (ካፒ፣ሚዛን፣ሜትር...ወዘተ) ይሰጣቸዋል። እነዚህ መሣሪያዎችን በመጠቀም በየወሩ የዋጋ መረጃዎችን ከነጋዴዎች ይሰበስባሉ።አንዳንድ ጊዜም አንድ በላተኛ ወይም ገዥ ከነጋዴ ሲገዛ ቢገኝና ለሥራው ተባባሪነቱን ካሳየ መረጃው ክርሱም ይሰበስባል። የችርቻሮ ዋጋ መረጃ የሚሰበሰበው እንደ አውሮፖውያን ዘመን አቆጣጠር ወሩ በገባ ከ1ኛው ቀን አንስቶ እስከ 15ኛው ቀን ነው። የክልል ኢንዱስትሪ ለማስላት ለኢንዱስትሪ ለተመረጡት እቃዎችና አገልግሎቶች አማካይ የችርቻሮ ዋጋቸውን የጂኦሜትሪክ ሚን ዘዴ ጥቅም ላይ ውሏል። የኢንዱስትሪ ሪፖርቱም በየወሩ እ.አ.አ በሁለተኛው ወር 5ኛው ቀን ለተጠቃሚዎች ይሰራጫል። በተጨማሪም ሪፖርቱ በማዕከላዊ ስታቲስቲክስ ኤጄንሲ ድረ-ገጽ ላይ በየወሩ ይወጣል።

የአገር አቀፍ የችርቻሮ ዋጋ መመዘኛ ኢንዱስትሪ የሚሰላው እያንዳንዱ ክልል ለአገር አቀፍ የቤተሰብ ወጪ ያለውን የመቶኛ ድርሻ መሠረት በማድረግ ነው።በመሆኑም ለአገር አቀፍ ኢንዱስትሪ ስሌት ከ94 በመቶ በላይ አስታውጾ የሚያደርጉ ክልሎች በቅደም ተከተል ኦሮሚያ፣አማራ፣የደቡብ ብሄር ብሄረሰቦችና ሕዝቦች፣አዲስ አበባና ትግራይ ሲሆኑ የተቀሩት ክልሎች በየወሩ ለሚታየው አገር አቀፍ የችርቻሮ ዋጋ መመዘኛ ኢንዱስትሪ ስሌት የሚኖራቸው አስታውጾ ከስድስት በመቶ የማይበልጥ ነው።

ለችርቻሮ ዋጋ ጥናት በአጠቃላይ 119 የገበያ ቦታዎች የተመረጡ ሲሆን በእያንዳንዱ ክልል የተመረጡ የገበያዎች ብዛትና በየኢንዱስትሪዎቻቸው ማዕቀፍ የተካተቱ ዕቃዎች/አገልግሎቶች ብዛት ከዚህ በታች ቀርቧል።

ሠንጠረዥ ሀ፡ በጥናቱ የተሸፈኑ ገበያዎች በኢንዱስትሪ ማዕቀፍ የተካተቱ ዕቃዎች አገልግሎቶች ብዛት በክልል

Table A: Number of Markets Covered and Basket of Commodities by Region.

ተ/ቁ No.	ክልል	የገበያ ቦታዎች ብዛት	በኢንዱስትሪ የተካተቱ ዕቃዎች/አገልግሎቶች ብዛት Basket of Goods and Services				Region
			Markets	ታህሳስ 1993= 100	ታህሳስ1999 =100	ታህሳስ 2004=100	
1	ትግራይ	8	114	143	157	165	Tigray
2	አፋር	4	85	153	123	135	Afar
3	አማራ	20	118	144	160	132	Amhara
4	አሮሚያ	24	127	161	175	171	Oromia
5	ሶማሌ	6	85	122	120	111	Somalie
6	ቤኒሻንጉል ጉሙዝ	6	111	142	164	134	Ben- Gumuz
7	ደ.ብ.ብ.ሀ	31	130	152	168	173	SNNP
8	ጋምቤላ	3	105	103	131	107	Gambela
9	ሐረሪ	2	102	158	115	156	Harari
10	አዲስ አበባ	12	175	193	165	185	Addis Ababa
11	ድሬድዋ	3	121	150	139	155	D. Dawa
		119	116	147	147	148	

ለጠቋሚ አሀዙ ክንዋኔ ዋናው ነገር ጠቋሚ አሀዙ ማዕቀፍ ተካትተው በዋናነት የሚያገለግሉ እቃዎችና አገልግሎቶች የመምረጥ ጉዳይ ነው። ጠቋሚ አሀዞች የሚመሰረቱት አጠቃላይ በናሙና በሚመረጡ ዕቃዎች ላይ ሲሆን በጠቋሚ አሀዙ ማዕቀፍ ውስጥ መካተት የሚገባው ዕቃ መወሰን ግን ሁሌም ቀላል የሚባል ተግባር አይደለም። የተያያዩ የአመራረጥ ዘዴ መጠቀም ቢቻልም የሚመረጡት ዕቃዎች ለረጅም ጊዜ የሚኖራቸው ተፈላጊነት፣ በአስተማማኝ ሁኔታ በገበያ ላይ የመገኘታቸው ጉዳይ፣ ሌሎችን ዕቃዎች የመወከል ብቃትና ከሌሎች ምርቶች ጋር ያላቸው ተወዳዳሪነት መሠረት ያደረገ እንዲሆን ይፈለጋል። በአጠቃላይ የተመረጡት ዕቃዎች በበቂ መጠን የመገኘታቸው ሁኔታ፣ በየወቅቱ ተወዳዳሪነታቸውና ዕቃዎችና አገልግሎቶች ምድቡን የመወከላቸው ብቃትን ማረጋገጥ ያስፈልጋል።

ይህ ታህሳስ 2009 ዓ/ም መሠረት ያደረገው የሸማቾች ዋጋ መመዘኛ ኢንዱክስ አይነቶችና እያንዳንዳቸው ዋና ክፍል ያለው የወጪ ድርሻ በገፅ 7 ላይ ይታያል። ይህ ሠንጠረዥ እንደሚያሳየው የምግብ የመቶኛ የወጪ ድርሻ ታህሳስ 2004 ዓ/ም ከነበረው 53 በመቶ ወደ 54 በመቶ ጨምሮአል። በአንፃሩ ደግሞ ምግብ ነክ ያልሆነ መመዘኛ ኢንዱክስ ታህሳስ 2004 ዓ/ም ከነበረው 47 በመቶ የወጪ ድርሻ ወደ 46 በመቶ ዝቅ ብሏል።

## Introduction

The Consumer Price Index (CPI) measures the average change in the price paid by consumers for a fixed market basket of goods and services. It is usually based on household expenditure weights of the goods and services in the basket and their current market prices. The twelve CPI's (i.e., the CPI's of the 11 Regions and the CPI at Country Level) presented in this report are based on the results of the Household Income, Consumption and Expenditure Survey (HICES) conducted by the Central Statistical Agency in 2015/2016 from which expenditure weights are derived for major household goods and services of that period and adjusted using the December 2016 retail prices of the goods and services as a base period.

The December 2016 based CPI updates the previous CPI series (i.e. December 2011 based) and the newly selected baskets are more diversified and the weights are more accurate. It also showed various improvements and incorporates non-food index as an independent group. The new series is constructed for country as a whole and Regional States including Dire Dawa and the Addis Ababa City Administration. However, similar indices had been utilized at Addis Ababa Level since 1963 and at Country, Urban and Rural Levels since 1995/96 and in Country and Regional level since 2000.

All the twelve general indices are divided into two major groups that is food and non-food index. The non-food index has eleven major divisions each, namely: Alcoholic Beverages; Cigarettes and Tobacco; Clothing and Footwear; House Rent, Construction Materials, Water, and Fuel and Power; Furniture, Furnishing, Household Equipment and Operation; Health; Transport; Communication; Recreation, Culture; Education; Restaurants and Hotels; and Miscellaneous Goods and Services. On the other hand, the Food Index has 10 classes. These are: Bread and Cereals; Meat; Fish and Seafood; Milk, Cheese and Eggs; Oil and Fats; Fruits; Vegetables and Pulses, Sugar, Honey and Chocolate; Food Products n,e.c., and Non-alcoholic beverages.

For the construction of the current consumer price indices, up to date data on retail prices are collected in the purposely from selected sample market places located in representative urban centers in each zone/special weredas of the country. Hence, a

total of 119 market places were selected for the retail price survey. In each market place an enumerator is assigned to undertake the data collection activities every month. The price data is collected from the 1<sup>st</sup> day through 15<sup>th</sup> days of European Calendar month under consideration. To calculate the monthly regional consumer price indices, geometric means of prices of the specific regions are used. The distribution of the market place of each region and items included in the basket of commodities are given on Table A on page 3. An important factor in constructing a Consumer Price Index is to select the representative basket of goods and services. Including all consumption items into the market basket of goods and services is both cumbersome and unnecessarily costly in term of data collection and processing. Furthermore, it doesn't make sense to include an insignificant weight into an index basket which could not move the price relative up or downwards compared to the general market trend. As a result, basket of goods and services included in the regional baskets are determined by expenditure cut-off point.

Country level CPI aggregates the regional group indices. The contributions of the six relatively big regions in terms of the magnitude of the expenditure account for more than 95 percent, namely, these regions are Oromia, Amhara, SNNP, Addis Ababa, Somali and Tigray. On the other hand, the contributions of the remaining regions to the Country Level Consumer Price Index is about five percent.

According to the weights for food and non-food groups in Table B below, the December 2016 based CPI is about 54 percent of household expenditure spent on the food component, which increased by 1 percentage points as compared to the December 2006 based CPI. On the other hand, the expenditure on non-food components decreased from 47 percent to 46 percent. The reason for  $\pm 1$  percentage point change was that the share of food increased in the two geographically and economically big regions of Oromia and Southern Peoples region.

The 2011 and 2016 CPI adapted the full version of the latest Classification of Individual Consumption by Purpose (COICOP) while the 2006 based CPI was an earlier version of COICOP. The following table shows the different COICOP versions by Comparison. In the 2006 based CPI Recreation, Entertainment and Education; and

Transport and Communication were put in the same divisions while the 2011 and 2016 based CPI separated them as standalone divisions. A new division called Restaurants and Hotels was introduced in the 2011 and 2016 based CPI by moving the food taken away from home previously categorized with Food to this new division. Non-Alcoholic beverages were taken out of the Non-Food division and moved to the Food division.

Table B: Major groups in the 2006, 2011 and 2016 based CPI and their weights  
At Country Level

Comparison of COICOP Divisions	December 2006=100	December 2011=100	December 2016=100
1. FOOD AND NON-ALCOHOLIC BEVERAGES	57%	53%	54%
Non - FOOD	43%	47%	46%
2. ALCOHOLIC BEVERAGES AND TOBACCO, NARCOTICS	2.5	4.85	4.9
3. CLOTHING AND FOOTWEAR	8.32	6.62	5.7
4. HOUSING, WATER, ELECTRICITY, GAS AND OTHER FUELS	20.56	16.34	16.8
5. FURNISHINGS, HOUSEHOLD EQUIPMENT AND ROUTINE MAINTENANCE OF THE HOUSE	3.75	5.41	4.7
6. HEALTH	1.11	1.08	1.5
7. TRANSPORT	2.5	2.80	2.5
8. COMMUNICATION	-	1.08	2.0
9. RECREATION AND CULTURE	1.1	0.60	0.4
10. EDUCATION	-	0.45	0.2
11. RESTAURANTS AND HOTELS	-	5.46	5.3
12. MISCELLANEOUS GOODS AND SERVICES	3.2	2.56	2.5
Total	100	100	100



## የግንቦት ወር 2015 ዓ.ም የዋጋ ግሽበት ሁኔታ

### ማጠቃለያ፦

የዋጋ ግሽበት በአሁኑ ጊዜ በአገራችን ብቻ ሳይሆን የአደጉ ሀገራት ጭምር ፈተና ሆኗል። በግንቦት ወር 2015 ዓ.ም አንዳንድ እህሎች ሩዝ፣ ጤፍ፣ ስንዴ፣ ገብስና በቆሎ አነስተኛ የዋጋ ቅናሽ አስመዘገባል። በተጨማሪም ቅባትና የምግብ ዘይት ዋጋ በመጠኑ ቀንሷል። ሆኖም ቲማቲም፣ ሽንኩርት፣ ድንችና ስራ ስሮች፣ ሥጋ፣ ወተት፣ አይብና ዕንቁላልም መጠነኛ ጭማሪ አሳይተዋል። ምግብ-ነክ ያልሆኑ የኢንዱስትሪ ክፍሎች ልብስና ጫማ፣ የቤት ጥገና ዕቃዎች፣ ነዳጅ፣ ጫትና የአሌክትሮኒክስ ዕቃዎች ላይም መጠነኛ ቅናሽ ታይቷል። በግንቦት ወር 2015 ዓመታዊ አጠቃላይ የዋጋ ግሽበት 30.8 ከመቶ የተመዘገበ ሲሆን ባለፈው ወር አጠቃላይ የዋጋ ግሽበት 33.5 ከመቶ ነበር። በግንቦት ወር 2015 ዓ.ም የተመዘገበው የአጠቃላይ፣ የምግብና ምግብ-ነክ ያልሆኑ የዋጋ ግሽበት መጠን ላይ መጠነኛ ቅናሽ አሳይቷል። ይህም ማለት የዋጋ የመጨመር ፍጥነት ካለፈው ዓመት ተመሳሳይ ወቅት ጋር ሲነጻጸር በትንሹ ቀንሷል።

### May 2023 Country Level Inflation Rate

#### Summary:

These days inflation is not only the problem for our country but has become a challenge for the developed countries as well. Slight decline in prices of some Cereals such as Rice, Tef, Wheat, Barely and Maize was registered during the month under review. In addition, the prices of Fats and cooking Oils has also shown a slight decline. However, rise in Prices of Tomato, Onion and Garlics, Potatoes and other Tubers, Meat and Milk, cheese and eggs had also been observed for the month of May 2023. In the Non-Food part, Clothing and Footwear, Housing repair and mentenance goods, Fuel, Chat, Jewelry and Electronics goods prices showed an increase. In May 2023, the year-on-year General inflation rate in Ethiopia has become 30.8 percent, after reaching 33.5 percent in the previous month. The magnitude of the General, Food and Non-Food inflation rate in May 2023 has showed a slight decline. This means that the rate of price increase slowed down in the current month as compared to similar period last year.



**ሀ) የ12 ወራት ተንከባላይ አማካይ አገራዊ የዋጋ ግሽበት**

ከሠንጠረዥ "ሐ" መረዳት እንደሚቻለው በግንቦት ወር 2015 ዓ/ም የተመዘገበው የ12 ወራት ተንከባላይ አማካይ አገራዊ አጠቃላይ የዋጋ ግሽበት ካለፈው ዓመት ተመሳሳይ ወቅት ጋር ሲነፃፀር 33.0 ከመቶ ሆኗል። በግንቦት ወር 2015 ዓ.ም አገራዊ የ12 ወራት ተንከባላይ አማካይ የምግብ የዋጋ ግሽበት በ32.5 ከመቶ ሲሆን የ12 ወራት ተንከባላይ አማካይ አገራዊ ምግብ ነክ ያልሆኑ የዋጋ ግሽበትም በ33.7 ከመቶ ተመዘግቧል። የ12 ወራት ተንከባላይ አማካይ የዋጋ ግሽበት ረዘም ያለ ጊዜ የዋጋ ግሽበት ሁኔታ የሚያሳይ ነው።

**ለ) የዋጋ ግሽበት ሁኔታ ካለፈው ዓመት ተመሳሳይ ወር ጋር በማነፃፀር**

የዋጋ ግሽበት ሁኔታ ካለፈው ዓመት ተመሳሳይ ወር ጋር በማነፃፀር የሚገኘው ውጤት ወቅታዊ የዋጋ ግሽበት ሁኔታን ይገልጻል። ሠንጠረዥ/መ/ የሚያሳየው የዋጋ ግሽበት ሁኔታ ካለፈው ዓመት ተመሳሳይ ወር ጋር በማነፃፀር ነው። ከሠንጠረዥ "መ" መረዳት እንደሚቻለው የግንቦት ወር 2015 ዓ/ም አጠቃላይ የዋጋ ግሽበት ካለፈው ዓመት ግንቦት ወር 2014 ዓ.ም ጋር ሲነፃፀር 30.8 ከመቶ ሆኗል። የምግብ የዋጋ ግሽበት የግንቦት ወር 2015 ዓ.ም ካለፈው ዓመት ግንቦት ወር 2014 ዓ.ም ጋር ሲነፃፀር 28.5 ከመቶ ተመዘግቧል።

በሌላ በኩል ምግብ ነክ ያልሆኑ የኢንዱስትሪ ክፍሎች የዋጋ ግሽበት የግንቦት ወር 2015 ዓ.ም ካለፈው ዓመት ግንቦት ወር 2014 ዓ/ም ጋር ሲነፃፀርም የ34.4 በመቶ ጭማሪ አሳይቷል። ከምግብ ነክ ያልሆኑ የኢንዱስትሪ ክፍሎች የዋጋ ግሽበት ካለፈው ተመሳሳይ ወቅት ጋር ሲነፃፀር ከፍ እንዲል ካደረጉት ዋና ምክንያቶች ውስጥ በተለይም በልብስና ጫማ፣ የቤት እንክብካቤና ኢነርጅ ፣ የቤት መስሪያ እቃዎች (ሲሚንቶ፣ የቤት ኪዳን ቆርቆሮ)፣ የቤት ዕቃዎችና የቤት ማሰገጫዎች (ሶፋ፣ ቡፌ፣ ፍሪጅ)፣ ነዳጅ፣ ህክምና፣ የትምህርት መሳሪያዎች እና ጌጣጌጥ (ወርቅ) ናቸው።

**ሐ) የዋጋ ግሽበት ሁኔታ የአሁኑን ወር ካለፈው ወር ጋር በማነፃፀር**

የግንቦት ወር 2015 ዓ/ም አጠቃላይ የዋጋ ግሽበት ካለፈው ወር ጋር ሲነፃፀር በ0.6 ነጥብ ከመቶ የጨመረ ሲሆን የምግብ የኢንዱስትሪ ክፍሎች በ1.2 ነጥብ ከመቶ ጭማሪ ተመዘግቧል። በተመሳሳይ ወቅት የምግብ ነክ ያልሆኑ የዋጋ ግሽበት በ0.3 ከመቶ ቀንሷል። ወርሃዊ የዋጋ ግሽበት ምጣኔው በመጨረሻዎቹ ሁለት ተከታታይ ወራት መካከል ያለውን የዋጋ ለውጥ ለመለካት ያገለግላል። ወርሃዊ የዋጋ ግሽበት ምጣኔው የወቅቱን ሁኔታ የሚያሳይ በመሆኑ የአጭር ጊዜ ክስተቱን ብቻ ያመለክታል።

### ***12 months Moving Average Inflation at Country Level***

As it is indicated in Table 'C' below the country level overall inflation rate (annual change based on 12 months Moving Average) rose by 33.0 percent in May 2023 as compared to the one observed in a similar period a year ago. The country level food inflation increased by 32.5 percent as compared to the one observed a year ago. The country level Non-food inflation rate increased by 33.7 percent in May 2023 as compared to the one observed in May 2022. The 12 months moving average inflation rate shows the longer term inflationary situation.

### ***Inflation based on comparison of Current vs. Last year's similar month at Country Level (Year-on-Year Change)***

Inflation based on comparison of Current vs. Last year's similar month shows the current inflation situation. Table (D) shows Inflation rate based on last year's similar month comparison. As can be seen from table "D" the May 2023 General year-on-year inflation has showed 30.8 percent as compared to the one observed in May 2022. The year-on-year Food inflation has also showed 28.5 percent in May 2023 as compared to the one observed in May 2022.

The Non-Food inflation increased by 34.4 percent in May 2023 as compared to the one observed in May 2022. The reason for Non-food Inflation is the mainly due to rise in the prices of Clothing and Footwear, Housing Repair and Maintenance (Cement and Corrugated Iron sheets), and Energy (Firewood and Charcoal), Furniture and home furnishings (Sofa, Drawers, Refrigerator) and Fuel, Medical care, Educational materials and Jewelry (Gold).

### ***Inflation based on comparison of Current vs. Last month at Country Level (month-on-month)***

*The month-on-month general CPI for May 2023 has showed a slight increase of 0.6 percent and the food CPI increased by 1.2 percent as compared to the preceding month. During the same period non-food CPI registered 0.3 percent decline. The monthly inflation rate measures the price change between the two latest months. Although up to date, it can be affected by seasonal and other short term effects.*

**ሠንጠረዥ ሐ: በአገር አቀፍ ደረጃ የ12 ወራት ተንከባላይ አማካይ የዋጋ ግሽበት ሁኔታ**

Table C: The Country Level 12 months Moving Average Inflation Rate

ወርና በጀት ዓመት	የዋጋ ግሽበት ሁኔታ			Budget Year and months
	አጠቃላይ የዋጋ ግሽበት	የምግብ ዋጋ ግሽበት	ምግብ ነክ ያልሆኑ የዋጋ ግሽበት	
	General Inflation	Food Inflation	Non-Food Inflation	
ሐምሌ 2009-ሰኔ 2010 (ዓመታዊ አማካይ)	10.6	11.0	11.0	July 2017 – June 2018 (Annual Average)
ሐምሌ 2010-ሰኔ 2011 (ዓመታዊ አማካይ)	13.7	12.8	14.9	July 2018 – June 2019 (Annual Average)
ሐምሌ 2011 - ሰኔ 2012 (ዓመታዊ አማካይ)	16.2	19.2	12.8	July 2019 – June 2020 (Annual Average)
ሐምሌ 2012 - ሰኔ 2013 (ዓመታዊ አማካይ)	20.3	23.1	16.9	July 2020 – June 2021 (Annual Average)
ሐምሌ 2013 - ሰኔ 2014 (ዓመታዊ አማካይ)	27.3	32.4	20.7	July 2021 – June 2022 (Annual Average)
መጋቢት 2014	30.3	36.4	22.3	March 2022
ሚያዝያ 2014	31.7	38.0	23.3	April 2022
ግንቦት 2014	33.1	39.6	24.4	May 2022
ሰኔ 2014	33.8	40.3	25.2	June 2022
ሐምሌ 2014	34.3	40.4	26.1	July 2022
ነሐሴ 2014	34.5	39.9	27.0	August 2022
መስከረም 2015	34.0	38.8	27.4	September 2022
ጥቅምት 2015	33.8	37.9	28.1	October 2022
ኅዳር 2015	34.0	37.5	29.1	November 2022
ታህሳስ 2015	33.9	36.8	29.8	December 2022
ጥር 2015	33.9	36.2	30.4	January 2023
የካቲት 2015	33.7	35.2	31.5	February 2023
መጋቢት 2015	33.7	34.5	32.5	March 2023
ሚያዝያ 2015	33.5	33.7	33.2	April 2023
ግንቦት 2015	33.0	32.5	33.7	May 2023

**ሠንጠረዥ መ: የዘንድሮውና የአምናው ተመሳሳይ ወሮች የሽማግሌት ዋጋ ኢንዱክስ ለውጥ ገጽጽ በአገር አቀፍ ደረጃ**

Table D: Comparison of CPI Movements, Current vs. Last year's Similar Months at Country Level

ወርና በጀት ዓመት	የዋጋ ግሽበት ሁኔታ			Budget Year
	አጠቃላይ የዋጋ ግሽበት	የምግብ ዋጋ ግሽበት	ምግብ ነክ ያልሆኑ የዋጋ ግሽበት	
	General Inflation	Food Inflation	Non-Food Inflation	
ሐምሌ 2009-ሰኔ 2010 ዓመታዊ አማካይ	14.4	13.5	15.8	July 2017 – June 2018 (Annual Average)
ሐምሌ 2010-ሰኔ 2011 (ዓመታዊ አማካይ)	12.6	13.1	12.0	July 2018 – June 2019 (Annual Average)
ሐምሌ 2011 - ሰኔ 2012 (ዓመታዊ አማካይ)	19.9	23.3	15.8	July 2019 – June 2020 (Annual Average)
ሐምሌ 2012 - ሰኔ 2013 (ዓመታዊ አማካይ)	20.1	23.1	16.4	July 2020 – June 2021 (Annual Average)
ሐምሌ 2013 - ሰኔ 2014 (ዓመታዊ አማካይ)	33.7	40.2	25.0	July 2021 – June 2022 (Annual Average)
መጋቢት 2014	34.7	43.4	23.5	March 2022
ሚያዝያ 2014	36.6	42.9	28.1	April 2022
ግንቦት 2014	37.2	43.9	28.0	May 2022
ሰኔ 2014	34.0	38.1	28.4	June 2022
ሐምሌ 2014	33.5	35.5	30.4	July 2022
ነሐሴ 2014	32.5	33.2	31.5	August 2022
መስከረም 2015	30.7	31.0	30.1	September 2022
ጥቅምት 2015	31.7	30.6	33.4	October 2022
ኅዳር 2015	35.1	34.2	36.5	November 2022
ታህሳስ 2015	33.8	32.9	35.2	December 2022
ጥር 2015	33.9	33.6	34.4	January 2023
የካቲት 2015	32.0	29.6	35.6	February 2023
መጋቢት 2015	34.2	32.8	36.3	March 2023
ሚያዝያ 2015	33.5	31.8	36.1	April 2023
ግንቦት 2015	30.8	28.5	34.4	May 2023

ያለፉት 12 ወራት የኢትዮጵያ ዋጋ ግሽበት  
 Last 12 months  
 Ethiopian Inflation trend

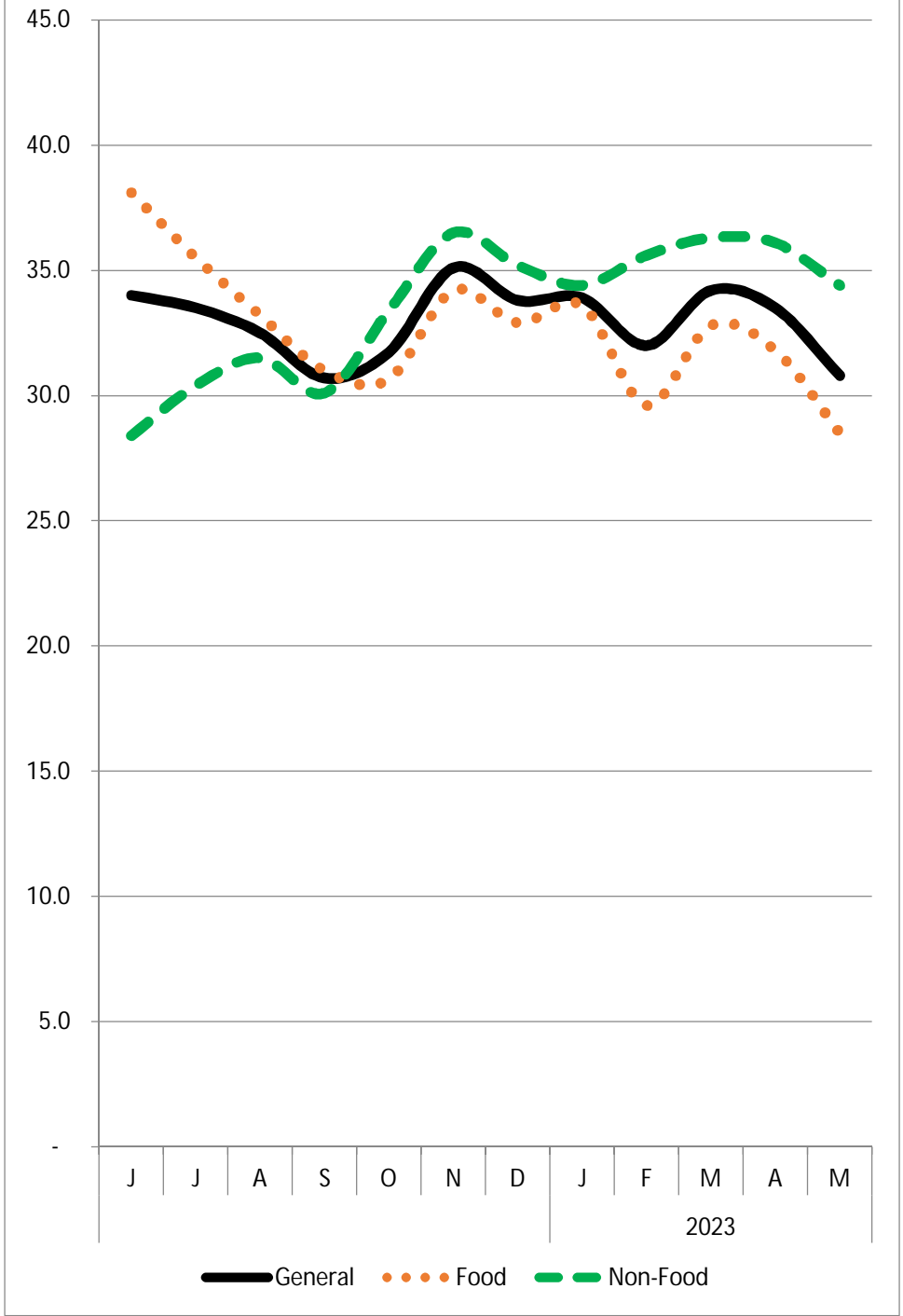


Table E: Comparison of CPI Movements, Current vs. Last month at Country Level

ወርና በጀት ዓመት	የዋጋ ግሽበት ሁኔታ			Budget Year and months
	አጠቃላይ የዋጋ ግሽበት	የምግብ ዋጋ ግሽበት	ምግብ ነክ ያልሆኑ የዋጋ ግሽበት	
	General Inflation	Food Inflation	Non-Food Inflation	
ሐምሌ 2009-ሰኔ 2010 (ዓመታዊ አማካይ)	1.3	1.1	1.5	July 2017 – June 2018 (Annual Average)
ሐምሌ 2010-ሰኔ 2011 (ዓመታዊ አማካይ)	1.2	1.5	0.8	July 2018 – June 2019 (Annual Average)
ሐምሌ 2011 - ሰኔ 2012 (ዓመታዊ አማካይ)	1.7	1.8	1.5	July 2019 – June 2020 (Annual Average)
ሐምሌ 2012 - ሰኔ 2013 (ዓመታዊ አማካይ)	1.9	2.2	1.5	July 2020 – June 2021 (Annual Average)
ሐምሌ 2013 - ሰኔ 2014 (ዓመታዊ አማካይ)	2.5	2.7	2.1	July 2021 – June 2022 (Annual Average)
መጋቢት 2014	4.0	4.3	3.4	March 2022
ሚያዝያ 2014	2.2	2.1	2.4	April 2022
ግንቦት 2014	2.6	3.8	0.9	May 2022
ሰኔ 2014	4.5	3.9	5.5	June 2022
ሐምሌ 2014	3.1	3.7	2.1	July 2022
ነሐሴ 2014	2.9	3.3	2.4	August 2022
መስከረም 2015	2.5	2.1	3.1	September 2022
ጥቅምት 2015	0.8	-0.3	2.5	October 2022
ኅዳር 2015	1.9	0.9	3.4	November 2022
ታህሳስ 2015	0.4	-0.5	1.8	December 2022
ጥር 2015	1.3	1.4	1.1	January 2023
የካቲት 2015	1.9	1.6	2.3	February 2023
መጋቢት 2015	5.7	7.0	3.9	March 2023
ሚያዝያ 2015	1.6	1.3	2.2	April 2023
ግንቦት 2015	0.6	1.2	-0.3	May 2023

### General consumer price index of selected Regions

		General	Oromia	Amhara	SNNP	AA	Food
2016	D	100.0	100.0	100.0	100.0	100.0	100.0
2017	J	100.9	101.3	100.6	100.1	100.3	100.9
	F	101.9	101.8	101.3	101.4	99.9	102.1
	M	104.5	103.8	105.4	104.8	102.6	106.2
	A	106.1	105.9	105.8	108.9	103.7	109.3
	M	106.3	105.4	108.1	110.5	103.7	109.4
	J	107.3	105.4	112.4	111.1	104.8	110.0
	J	110.0	107.6	118.7	111.6	109.1	112.1
	A	111.3	109.3	119.0	114.1	110.0	112.8
	S	114.9	113.0	120.8	116.2	118.0	117.0
	O	114.3	112.7	120.0	115.7	115.5	117.5
	N	116.2	114.5	123.0	118.1	116.9	117.0
	D	116.6	115.3	124.4	113.2	120.3	115.6
2018	J	117.7	115.4	125.6	116.4	120.1	116.8
	F	118.2	115.8	124.4	118.3	121.5	118.8
	M	120.6	118.1	126.8	120.0	121.7	120.7
	A	120.9	118.6	128.0	120.7	123.4	121.7
	M	122.5	120.9	130.1	122.9	126.5	122.5
	J	125.3	123.7	129.3	126.4	131.3	125.5
	J	126.8	123.7	135.1	126.8	131.0	127.3
	A	127.2	124.5	134.2	126.5	131.2	128.4
	S	128.6	127.2	133.3	126.9	134.1	129.6
	O	128.2	127.1	133.7	125.9	132.5	128.8
	N	127.0	123.9	134.3	126.0	132.2	128.0
	D	128.6	126.5	135.0	126.2	133.4	128.6
2019	J	130.4	128.4	136.5	127.0	136.5	130.1
	F	131.1	129.5	137.3	127.8	136.6	131.5
	M	134.0	132.4	139.9	130.1	139.3	134.3
	A	136.4	134.2	141.3	133.5	141.2	139.2
	M	142.2	139.9	151.2	138.3	146.8	147.6
	J	144.4	141.2	153.2	139.2	147.7	150.2
	J	146.4	143.3	154.1	143.5	149.0	152.6
	A	149.8	146.4	159.1	145.3	153.2	157.6
	S	152.3	148.5	159.6	150.1	156.3	159.5
	O	152.0	148.3	156.8	152.4	156.2	158.4
	N	153.1	149.5	159.6	153.5	156.1	159.1
	D	154.0	148.6	162.8	156.1	157.8	157.9
2020	J	155.1	149.4	163.5	157.6	160.6	158.7
	F	159.7	153.3	171.0	162.7	162.1	164.5
	M	164.2	161.0	174.7	164.9	166.7	170.4
	A	167.6	161.3	176.0	175.2	175.8	175.2
	M	170.4	165.3	177.6	179.4	177.7	177.6
	J	175.4	170.2	183.5	182.0	181.2	184.8
	J	178.9	175.8	183.1	184.3	186.1	190.6
	A	179.8	172.4	187.5	190.1	186.9	192.2
	S	180.8	173.3	186.7	195.4	186.0	193.4
	O	181.5	175.2	184.9	193.6	187.1	195.1
	N	182.2	175.2	186.2	194.4	185.1	194.3
	D	181.9	175.1	186.7	193.1	184.8	191.5
2021	J	185.0	178.4	188.6	196.9	188.6	195.5
	F	192.4	188.2	191.7	209.2	193.0	202.0

	<b>M</b>	198.1	194.2	195.8	215.1	199.3	<b>208.0</b>
	<b>A</b>	199.8	195.2	198.5	218.5	203.7	<b>213.1</b>
	<b>M</b>	204.2	197.6	201.8	228.6	209.7	<b>219.7</b>
	<b>J</b>	218.4	215.1	212.3	248.5	223.1	<b>237.9</b>
	<b>J</b>	226.3	224.9	223.9	253.0	228.8	<b>251.7</b>
	<b>A</b>	234.5	234.5	230.4	262.8	232.6	<b>264.4</b>
	<b>S</b>	243.8	245.1	244.4	263.8	243.1	<b>274.5</b>
	<b>O</b>	243.5	243.4	245.4	265.9	242.7	<b>274.5</b>
	<b>N</b>	242.3	243.5	240.5	264.6	237.7	<b>269.9</b>
	<b>D</b>	245.8	244.6	246.7	268.2	245.6	<b>271.2</b>
2022	<b>J</b>	248.7	248.4	248.5	269.9	249.6	<b>273.5</b>
	<b>F</b>	257.0	257.3	259.7	277.4	252.3	<b>286.5</b>
	<b>M</b>	267.2	265.7	273.5	289.0	259.2	<b>299.0</b>
	<b>A</b>	273.1	271.0	276.1	299.7	266.5	<b>305.2</b>
	<b>M</b>	280.4	285.0	279.9	295.9	277.5	<b>316.8</b>
	<b>J</b>	293.0	296.6	293.2	318.1	293.9	<b>329.0</b>
	<b>J</b>	302.0	305.7	304.2	329.8	300.6	<b>341.2</b>
	<b>A</b>	310.8	317.1	313.5	336.6	311.8	<b>352.3</b>
	<b>S</b>	318.5	323.6	321.5	342.6	313.6	<b>359.6</b>
	<b>O</b>	321.2	324.1	321.0	351.3	319.0	<b>358.7</b>
	<b>N</b>	327.4	333.0	326.2	358.6	321.6	<b>362.1</b>
	<b>D</b>	328.9	331.8	330.9	358.8	328.8	<b>360.4</b>
2023	<b>J</b>	333.1	333.1	334.5	357.4	338.7	<b>365.4</b>
	<b>F</b>	339.4	338.9	340.4	369.4	348.9	<b>371.3</b>
	<b>M</b>	358.8	358.2	359.7	391.0	379.5	<b>397.2</b>
	<b>A</b>	364.7	369.2	364.4	401.0	391.8	<b>402.2</b>
	<b>M</b>						



ሠንጠረዥ 1 ሀገር አቀፍ የሽያጭ ዋጋ መመዘኛ ኢንዱስትሪ ደረጃ የተካተቱ ክፍሎች በአገር አቀፍ ደረጃ  
 ታህሳስ 2009 = 100  
 Table 1a: General Consumer Price Index and Its Components Country Level  
 December 2016 = 100

ወርና ዓመት	ጠቅላላ ኢንዱስትሪ	ምግብና አልኮል ያልሆኑ መጠጦች	ምግብ ነጻ ያልሆኑ ኢንዱስትሪ	ምግብ ነጻ ያልሆኑ ኢንዱስትሪ ክፍሎች Non-food Consumer Price Index Component									
				መጠጥ ሲጃራና ትምባሆ	ልብስና መጫሚያ	የቤት ኪራይ የቤት መሥሪያ ዕቃዎች ውሃ ነጻጅና	የቤት ማስገጫዎች የቤት ቁሳቁስና የቤት ሠራተኛ	ህክምና	ትራንስፖርት	መገናኛ	መዝናኛና ባህል	ትምህርት	ሬስታራንትና ሆቴሎች
Month an Year	General Index	Food and Non-Alcoholic Beverages	Non-Food Index	Alcoholic Beverages and Tobacco	Clothing and Footwear	Housing, Water, Electricity, Gas and Other Fuels	Furnishings, Household Equipment and Routine Maintenance of the House	Health	Transport	Communication	Recreation and Culture	Education	Restaurants and Hotels
ታህሳስ 2009	100.0	100.0	100.0	100.0	100.0	100.0	100.0	100.0	100.0	100.0	100.0	100.0	100.0
ሐምሌ 2009 - ሰኔ 2010	117.3	118.0	116.5	110.2	124.5	121.0	119.5	97.8	110.0	104.5	116.5	108.2	113.5
ሐምሌ 2010 - ሰኔ 2011	132.0	133.5	130.3	117.7	147.2	132.8	139.5	112.2	124.1	103.7	125.5	124.8	129.6
ሐምሌ 2011 - ሰኔ 2012	158.3	164.7	151.0	139.7	160.5	158.6	152.9	130.1	153.7	104.4	138.7	134.1	153.4
ሐምሌ 2012 - ሰኔ 2013	190.3	202.9	175.8	172.0	183.1	181.2	172.2	165.9	199.7	113.4	158.2	144.6	179.5
ሐምሌ 2013 - ሰኔ 2014	254.7	284.7	220.1	230.3	228.1	216.1	247.0	226.9	214.8	124.1	226.2	184.1	229.9
ጧይ 2014	273.1	305.2	236.3	255.0	238.2	228.5	278.6	244.7	209.6	128.8	248.6	196.9	251.5
ግንቦት 2014	280.4	316.8	238.4	251.6	255.2	222.1	290.7	245.6	228.6	129.1	257.5	197.2	251.5
ሰኔ 2014	293.0	329.0	251.6	271.7	257.4	232.7	308.2	250.5	232.3	131.9	263.8	196.2	283.6
2015													
ሐምሌ 2014	302.0	341.2	256.9	253.4	273.7	239.3	319.4	253.1	254.3	132.8	264.7	199.1	283.6
ነሐሴ 2014	310.8	352.3	263.0	262.3	303.6	235.2	329.6	261.3	270.0	132.5	273.7	202.6	284.9
መስከረም 2015	318.6	359.6	271.3	296.8	283.7	244.3	333.5	255.2	270.8	135.7	320.7	220.2	304.7
ጥቅምት 2015	321.2	358.7	278.1	290.9	299.9	249.7	351.4	264.7	284.0	128.0	347.6	220.5	304.7
ህዳር 2015	327.4	362.1	287.6	296.8	311.3	265.7	358.9	269.2	283.8	128.1	350.6	225.0	304.7
ታህሳስ 2015	328.9	360.4	292.7	308.9	311.5	266.2	372.1	270.8	268.6	126.6	353.5	221.9	326.8
ጥር 2015	333.1	365.4	295.9	314.7	317.3	268.1	374.2	276.3	272.8	126.4	353.7	221.2	328.4
የካቲት 2015	339.4	371.3	302.8	322.4	324.7	276.1	387.8	282.3	277.5	130.0	363.8	224.4	328.4
መጋቢት 2015	358.8	397.2	314.5	335.0	341.6	284.3	398.2	322.3	280.1	128.6	362.2	224.7	349.7
ጧይ 2015	364.7	402.2	321.4	332.5	367.4	290.7	407.1	316.5	279.1	129.8	363.7	228.7	355.3
ግንቦት 2015	366.7	406.9	320.5	323.5	347.5	293.9	412.0	327.8	298.2	129.0	360.4	223.6	350.1
	30.8	28.5	34.4	28.6	36.2	32.4	41.7	33.4	30.4	0.0	39.9	13.4	39.2

ሠንጠረዥ 3ሀI ጠቅላላ የሽግግር ዋጋ መመዘኛ ኢንዱስትሪ ደረጃ የተካተቱ ክፍሎች ለአዲስ አበባ ከተማ አስተዳደር

ታህሳስ 2009 = 100

Table 3a: General Consumer Price Index and Its Components for Addis Ababa City Administration  
December 2016 = 100

ወርና ዓመት	ጠቅላላ ኢንዱስትሪ	ምግብና አልኮል ያልሆኑ መጠጦች	ምግብ ነክ ያልሆኑ ኢንዱስትሪ	ምግብ ነክ ያልሆኑ ደረጃ ኢንዱስትሪ ክፍሎች Non-food Consumer Price Index Component									
				መጠጥ ሲጃራና ትምባሆ	ልብስና መጫሚያ	የቤት ኪራይ የቤት መሥሪያ ዕቃዎች ውሃ ነጻጅና	የቤት ማስገጫዎች የቤት ቁሳቁስና የቤት ሠራተኛ	ህክምና	ትራንስፖርት	መገናኛ	መዝናኛና ባህል	ትምህርት	ሬስታራንትና ሆቴሎች
Month an Year	General Index	Food and Non-Alcoholic Beverages	Non-Food Index	Alcoholic Beverages and Tobacco	Clothing and Footwear	Housing, Water, Electricity, Gas and Other Fuels	FurnishingsHousehold Equipment and Routine Maintenance of the House	Health	Transport	Communication	Recreation and Culture	Education	Restaurants and Hotels
ታህሳስ 2009	100.0	100.0	100.0	100.0	100.0	100.0	100.0	100.0	100.0	100.0	100.0	100.0	100.0
ሐምሌ 2009 - ሰኔ 2010	119.5	112.6	124.8	108.3	104.0	153.3	123.5	119.2	107.6	116.3	109.1	100.0	117.7
ሐምሌ 2010 - ሰኔ 2011	137.0	129.4	142.7	121.1	116.7	179.8	144.9	134.6	117.2	118.6	113.4	119.6	138.8
ሐምሌ 2011 - ሰኔ 2012	162.7	163.0	162.5	144.0	128.6	216.7	161.1	146.3	141.3	116.1	121.9	129.1	150.7
ሐምሌ 2012 - ሰኔ 2013	194.5	205.7	185.9	188.0	161.6	250.4	180.0	176.2	162.0	115.7	130.1	140.1	166.3
ሐምሌ 2013 - ሰኔ 2014	252.5	281.1	230.7	233.0	208.9	293.6	252.4	237.3	176.7	119.3	193.0	189.3	230.3
ሐምሌ 2014	300.6	331.6	277.1	283.3	259.4	330.3	306.3	284.2	234.8	127.5	250.9	204.7	305.8
ነሐሴ 2014	311.8	350.3	282.4	291.2	268.6	332.5	324.5	283.0	241.7	125.9	255.8	214.6	305.8
መስከረም 2015	313.6	356.9	280.6	295.4	272.9	321.6	327.1	283.8	239.6	129.1	278.6	223.5	299.5
ጥቅምት 2015	319.0	358.6	288.9	311.8	298.5	320.5	347.4	308.7	261.9	129.1	271.3	213.1	299.5
ህዳር 2015	321.6	358.2	293.8	308.1	315.8	324.0	351.2	319.2	260.7	129.5	283.7	212.6	299.5
ታህሳስ 2015	328.8	357.0	307.4	318.7	323.5	338.3	369.0	353.5	260.0	130.3	286.1	210.4	328.7
ጥር 2015	338.7	360.5	322.1	331.3	349.9	378.1	371.0	344.5	256.3	130.3	287.9	212.6	328.7
የካቲት 2015	348.9	376.2	328.1	325.8	355.7	380.8	383.1	346.3	279.6	131.1	297.1	216.5	328.7
መጋቢት 2015	379.5	407.9	357.9	338.1	367.6	449.8	393.2	333.5	284.8	132.3	300.8	223.1	377.5
ሚያዝያ 2015	391.8	429.7	363.0	337.1	380.3	452.1	401.3	348.2	302.0	132.3	295.1	225.4	377.5
ግንቦት 2015	398.1	437.3	368.2	346.3	386.5	452.9	413.9	384.5	308.9	132.7	303.5	227.0	377.5

ሠንጠረዥ 4ሀI ጠቅላላ የሽግግር ዋጋ መመዘኛ ኢንዱስትሪ ደረጃ የተካተቱ ክፍሎች ለአፋር ብሔራዊ ክልላዊ መንግስት  
 ታህሳስ 2009 = 100

Table 4a: General Consumer Price Index and Its Components for Afar National Regional State  
 December 2016 = 100

ወርና ዓመት	ጠቅላላ ኢንዱስትሪ	ምግብና አልኮል ያልሆኑ መጠጦች	ምግብ ነክ ያልሆኑ ኢንዱስትሪ	ምግብ ነክ ያልሆኑ ደረጃ ኢንዱስትሪ ክፍሎች Non-food Consumer Price Index Component									
				መጠጦ ሲጃራና ትምብሆ	ልብስና መጫሚያ	የቤት ኪራይ የቤት መሥሪያ ዕቃዎች ውሃ ነጻጅና	የቤት ማስገጫዎች የቤት ቁሳቁስና የቤት ሠራተኛ	ህክምና	ትራንስፖርት	መገናኛ	መዝናኛና ባህል	ትምህርት	ሬስታራንትና ሆቴሎች
Month an Year	General Index	Food and Non-Alcoholic Beverages	Non-Food Index	Alcoholic Beverages and Tobacco	Clothing and Footwear	Housing, Water, Electricity, Gas and Other Fuels	FurnishingsHousehold Equipment and Routine Maintenance of the House	Health	Transport	Communication	Recreation and Culture	Education	Restaurants and Hotels
<b>ታህሳስ 2009</b>	<b>100.0</b>	<b>100.0</b>	<b>100.0</b>	<b>100.0</b>	<b>100.0</b>	<b>100.0</b>	<b>100.0</b>	<b>100.0</b>	<b>100.0</b>	<b>100.0</b>	<b>100.0</b>	<b>100.0</b>	<b>100.0</b>
ሐምሌ 2009 - ሰኔ 2010	113.7	114.7	112.7	113.6	115.6	117.4	105.4	111.0	120.7	100.0	122.5	97.2	106.7
ሐምሌ 2010 - ሰኔ 2011	124.4	127.7	121.3	102.4	125.5	127.0	141.6	97.3	124.5	102.7	165.1	110.7	120.2
ሐምሌ 2011 - ሰኔ 2012	149.5	161.2	138.2	112.6	145.5	133.4	162.1	103.2	198.0	103.7	180.7	119.0	154.5
ሐምሌ 2012 - ሰኔ 2013	176.6	197.0	156.8	142.0	173.0	143.1	176.5	128.5	240.8	104.6	210.0	130.7	167.9
ሐምሌ 2013 - ሰኔ 2014	235.4	278.2	193.9	166.5	200.9	201.3	230.7	160.9	214.6	104.6	308.0	182.2	195.6
2015													
ሐምሌ 2014	286.3	337.6	236.6	189.4	263.9	245.3	304.6	180.7	218.4	104.6	388.5	186.5	234.8
ነሐሴ 2014	303.1	356.8	251.1	203.0	259.9	252.9	333.8	189.9	275.2	104.6	386.9	266.7	275.4
መስከረም 2015	311.0	374.0	250.0	175.1	251.7	261.6	347.3	198.2	275.2	104.6	482.1	268.9	255.9
ጥቅምት 2015	314.6	376.6	254.7	169.9	262.1	257.4	361.4	188.4	321.0	104.6	453.0	224.8	255.9
ህዳር 2015	319.8	380.2	261.3	170.3	268.1	262.2	382.0	170.8	346.7	104.6	535.3	249.6	255.9
ታህሳስ 2015	317.4	372.2	264.4	188.7	286.6	233.8	376.6	269.2	315.0	104.6	515.6	246.4	284.0
ጥር 2015	329.3	385.1	275.2	203.7	282.0	266.8	383.5	270.8	245.1	104.6	524.9	195.5	284.0
የካቲት 2015	335.5	390.5	282.2	205.8	291.5	253.5	424.5	295.4	323.1	104.6	517.0	180.0	284.0
መጋቢት 2015	361.3	419.6	304.9	217.5	287.2	305.2	437.4	347.0	346.7	104.6	517.9	203.9	305.5
ግንቦት 2015	367.5	429.1	307.8	204.0	305.1	307.6	439.7	349.5	346.7	104.6	511.9	216.0	305.5
ግንቦት 2015	379.2	436.1	324.1	224.9	316.5	335.8	445.4	357.4	379.1	104.6	539.5	200.6	305.5

ሠንጠረዥ 501 ጠቅላላ የሽግግር ዋጋ መመዘኛ ኢንዱስትሪ ደረጃ የተካተቱ ክፍሎች ለአጣራ ብሔራዊ ክልላዊ መንግስት ታህሳስ 2009 = 100

Table 5a: General Consumer Price Index and Its Components for Amhara National Regional State December 2016 = 100

ወርና ዓመት	ጠቅላላ ኢንዱስትሪ	ምግብና አልኮል ያልሆኑ መጠጦች	ምግብ ነክ ያልሆኑ ኢንዱስትሪ	ምግብ ነክ ያልሆኑ ደረጃ ኢንዱስትሪ ክፍሎች Non-food Consumer Price Index Component									
				መጠጥ ሲጃራና ትምብሆ	ልብስና መጫሚያ	የቤት ኪራይ የቤት መሥሪያ ዕቃዎች ውሃ ነጻጅና	የቤት ማስገጫዎች የቤት ቁሳቁስና የቤት ሠራተኛ	ህክምና	ትራንስፖርት	መገናኛ	መዝናኛና ባህል	ትምህርት	ሬስታራንትና ሆቴሎች
Month an Year	General Index	Food and Non-Alcoholic Beverages	Non-Food Index	Alcoholic Beverages and Tobacco	Clothing and Footwear	Housing, Water, Electricity, Gas and Other Fuels	FurnishingsHousehold Equipment and Routine Maintenance of the House	Health	Transport	Communication	Recreation and Culture	Education	Restaurants and Hotels
ታህሳስ 2009	100.0	100.0	100.0	100.0	100.0	100.0	100.0	100.0	100.0	100.0	100.0	100.0	100.0
ሐምሌ 2009 - ሰኔ 2010	124.1	122.0	126.5	140.1	117.5	141.1	116.0	139.2	105.2	108.4	131.0	119.0	113.4
ሐምሌ 2010 - ሰኔ 2011	138.9	138.2	139.7	144.8	140.9	152.3	134.7	174.7	117.8	125.4	141.7	124.4	122.0
ሐምሌ 2011 - ሰኔ 2012	166.5	171.0	161.5	172.9	152.2	176.5	148.5	200.3	145.6	136.2	151.4	135.4	150.1
ሐምሌ 2012 - ሰኔ 2013	192.0	202.8	179.9	217.8	173.5	183.6	167.4	221.9	167.3	191.1	162.3	142.3	169.0
ሐምሌ 2013 - ሰኔ 2014	255.2	275.5	232.5	308.9	225.0	225.6	233.9	279.3	187.3	235.3	219.9	181.0	229.4
2015													
ሐምሌ 2014	304.2	332.7	272.4	388.1	266.9	229.9	304.1	303.1	223.2	257.3	253.1	200.3	301.6
ነሐሴ 2014	313.5	348.6	274.2	389.1	275.5	224.6	320.4	297.2	262.0	257.3	256.0	195.6	301.6
መስከረም 2015	321.5	351.7	287.8	407.7	285.0	232.3	322.5	322.1	246.6	257.3	307.2	221.0	337.6
ጥቅምት 2015	321.0	348.1	290.6	408.9	295.3	228.0	330.3	361.9	263.9	222.5	317.9	265.3	337.6
ህዳር 2015	326.2	349.6	299.9	412.2	301.9	247.8	332.3	364.5	261.1	222.5	321.7	294.7	337.6
ታህሳስ 2015	330.9	351.5	307.8	448.0	300.5	240.0	351.1	343.5	285.4	222.5	322.6	283.0	361.5
ጥር 2015	334.5	353.4	313.4	450.4	305.8	256.9	346.5	339.4	264.7	222.5	336.1	258.8	361.5
የካቲት 2015	340.4	359.2	319.4	453.8	319.2	264.8	351.3	351.0	283.0	222.5	364.6	274.4	361.5
መጋቢት 2015	359.7	380.1	336.8	493.8	325.2	282.3	361.7	360.1	281.5	222.5	367.1	249.3	386.8
ግንቦት 2015	364.4	388.6	337.3	497.1	335.4	277.2	388.4	341.5	259.0	222.5	372.1	259.5	386.8
ግንቦት 2015	373.1	395.4	348.1	479.1	333.5	308.9	393.4	347.3	266.3	222.5	374.1	233.2	386.8

ሠንጠረዥ 6ሀI ጠቅላላ የሽግግር ዋጋ መመዘኛ ኢንዱስትሪ ብሔራዊ የተካተቱ ክፍሎች ለቤ/ጉሙዝ ብሔራዊ ክልላዊ መንግስት ታህሳስ 2009 = 100

Table 6a: General Consumer Price Index and Its Components for Beneshangual-Gumuz National Regional State December 2016 = 100

ወርና ዓመት	ጠቅላላ ኢንዱስትሪ	ምግብና አልኮል ያልሆኑ መጠጦች	ምግብ ነክ ያልሆኑ ኢንዱስትሪ	ምግብ ነክ ያልሆኑ ይኢንዱስትሪ ክፍሎች Non-food Consumer Price Index Component									
				መጠጥ ሲጃራና ትምባሆ	ልብስና መጫሚያ	የቤት ኪራይ የቤት መሥሪያ ዕቃዎች ውሃ ነጻጅና	የቤት ማስገጫዎች የቤት ቁሳቁስና የቤት ሠራተኛ	ህክምና	ትራንስፖርት	መገናኛ	መዝናኛና ባህል	ትምህርት	ሬስታራንትና ሆቴሎች
Month an Year	General Index	Food and Non-Alcoholic Beverages	Non-Food Index	Alcoholic Beverages and Tobacco	Clothing and Footwear	Housing, Water, Electricity, Gas and Other Fuels	FurnishingsHousehold Equipment and Routine Maintenance of the House	Health	Transport	Communication	Recreation and Culture	Education	Restaurants and Hotels
<b>ታህሳስ 2009</b>	<b>100.0</b>	<b>100.0</b>	<b>100.0</b>	<b>100.0</b>	<b>100.0</b>	<b>100.0</b>	<b>100.0</b>	<b>100.0</b>	<b>100.0</b>	<b>100.0</b>	<b>100.0</b>	<b>100.0</b>	<b>100.0</b>
ሐምሌ 2009 - ሰኔ 2010	116.1	120.1	112.4	101.0	97.6	101.4	126.4	129.7	119.0	100.0	168.5	100.0	135.1
ሐምሌ 2010 - ሰኔ 2011	133.5	133.8	133.2	114.9	114.3	104.9	152.7	189.8	121.4	98.9	179.4	104.2	193.0
ሐምሌ 2011 - ሰኔ 2012	165.7	173.8	158.0	156.0	135.2	126.5	172.1	193.3	133.5	100.0	230.5	118.8	228.4
ሐምሌ 2012 - ሰኔ 2013	206.7	223.7	190.8	201.9	161.3	163.9	197.5	206.0	147.6	100.0	274.3	122.4	272.5
ሐምሌ 2013 - ሰኔ 2014	288.4	323.9	255.0	245.7	220.2	230.0	305.5	248.4	157.0	100.0	364.1	146.9	361.1
2015													
ሐምሌ 2014	342.9	401.5	287.9	237.5	258.9	238.8	381.6	260.0	248.1	100.0	422.0	150.0	412.2
ነሐሴ 2014	350.9	404.8	300.4	250.3	264.5	241.8	398.2	273.9	242.8	100.0	473.4	150.0	451.8
መስከረም 2015	349.3	409.8	292.4	317.6	267.2	193.2	405.6	274.3	241.7	100.0	507.4	150.0	408.2
ጥቅምት 2015	356.7	409.3	307.2	318.6	278.3	234.4	407.9	259.0	241.7	100.0	535.0	175.0	408.2
ህዳር 2015	370.7	430.0	315.0	334.0	294.2	229.5	435.7	259.7	261.5	100.0	610.9	187.5	408.2
ታህሳስ 2015	376.5	427.6	328.5	310.3	305.9	242.7	442.2	283.1	264.4	100.0	618.0	150.0	465.8
ጥር 2015	385.8	419.0	354.7	340.7	325.1	243.5	465.1	289.1	261.0	100.0	586.2	175.0	566.0
የካቲት 2015	388.4	423.6	355.2	352.4	311.4	237.8	465.0	293.8	269.0	100.0	599.2	150.0	566.0
መጋቢት 2015	409.4	438.1	382.4	350.3	322.4	262.1	477.8	291.0	269.0	100.0	586.2	150.0	666.2
ሚያዝያ 2015	404.7	444.7	367.2	300.6	331.9	225.8	500.4	295.5	269.0	100.0	584.2	162.5	641.1
ግንቦት 2015	411.6	460.0	366.1	308.1	338.8	211.5	517.0	297.9	284.5	100.0	584.2	137.5	641.1

ሠንጠረዥ 701 ጠቅላላ የሽግግር ዋጋ መመዘኛ ኢንዱስትሪ የተካተቱ ክፍሎች ለድሬዳዋ ከተማ አስተዳደር

ታህሳስ 2009 = 100

Table 7a: General Consumer Price Index and Its Components for Dire Dawa City Administration  
December 2016 = 100

ወርና ዓመት	ጠቅላላ ኢንዱስትሪ	ምግብና አልኮል ያልሆኑ መጠጦች	ምግብ ነጻ ያልሆኑ ኢንዱስትሪ	ምግብ ነጻ ያልሆኑ ይኢንዱስትሪ ክፍሎች Non-food Consumer Price Index Component									
				መጠጦች ሲጃራና ትምብሆ	ልብስና መጫሚያ	የቤት ኪራይ የቤት መሥሪያ ፊት ለፊት ዓይነት ነጻ ጅና	የቤት ማስገጫዎች የቤት ቁሳቁስና የቤት ሠራተኛ	ህክምና	ትራንስፖርት	መገናኛ	መዝናኛና ባህል	ትምህርት	ሬስታራንትና ሆቴሎች
Month an Year	General Index	Food and Non-Alcoholic Beverages	Non-Food Index	Alcoholic Beverages and Tobacco	Clothing and Footwear	Housing, Water, Electricity, Gas and Other Fuels	FurnishingsHousehold Equipment and Routine Maintenance of the House	Health	Transport	Communication	Recreation and Culture	Education	Restaurants and Hotels
ታህሳስ 2009	100.0	100.0	100.0	100.0	100.0	100.0	100.0	100.0	100.0	100.0	100.0	100.0	100.0
ሐምሌ 2009 - ሰኔ 2010	110.8	113.5	108.9	110.4	123.7	106.3	111.2	98.9	97.6	100.0	117.6	103.1	108.1
ሐምሌ 2010 - ሰኔ 2011	125.0	136.7	116.3	109.8	129.5	116.8	126.7	111.9	113.3	66.9	127.5	118.9	123.1
ሐምሌ 2011 - ሰኔ 2012	150.7	171.8	135.0	137.3	157.1	135.2	146.8	132.5	134.7	60.2	128.9	148.4	132.1
ሐምሌ 2012 - ሰኔ 2013	180.5	217.4	153.0	164.3	162.3	144.2	164.9	164.7	210.8	60.2	153.2	159.2	162.9
ሐምሌ 2013 - ሰኔ 2014	240.9	298.5	197.9	255.9	208.9	175.2	223.6	245.9	181.8	60.2	202.1	202.8	213.2
2015													
ሐምሌ 2014	294.9	361.6	245.2	368.8	254.1	198.1	288.4	258.7	168.6	60.2	217.6	206.3	278.2
ነሐሴ 2014	302.3	375.8	247.5	310.7	258.1	203.7	298.3	271.8	255.9	60.2	276.9	206.3	278.2
መስከረም 2015	313.2	387.5	257.7	326.7	269.8	205.1	317.1	264.5	255.9	60.2	284.8	189.6	303.5
ጥቅምት 2015	327.3	402.9	270.8	340.0	305.2	211.7	333.2	247.9	255.9	60.2	302.3	195.8	303.5
ህዳር 2015	339.6	403.0	292.3	380.1	401.2	207.7	352.1	249.5	255.9	60.2	323.8	196.5	303.5
ታህሳስ 2015	344.2	402.5	300.8	380.7	411.8	205.4	359.8	249.5	295.9	60.2	340.7	196.5	316.7
ጥር 2015	351.9	410.6	308.0	398.5	413.2	205.4	368.9	250.7	338.0	60.2	317.0	196.5	316.7
የካቲት 2015	359.3	418.2	315.3	403.5	420.9	208.6	382.7	268.1	338.0	60.2	316.5	196.5	316.7
መጋቢት 2015	375.4	449.1	320.3	418.3	427.9	207.9	394.2	268.5	338.0	60.2	315.4	196.5	342.5
ግንቦት 2015	386.1	466.7	326.1	421.5	442.8	212.4	392.7	267.5	338.0	60.2	313.2	196.5	342.5
ግንቦት 2015	399.6	494.3	329.0	449.2	434.9	214.1	399.2	305.5	255.9	60.2	318.7	208.2	342.5

ሠንጠረዥ 801 ጠቅላላ የሽግግር ዋጋ መመዘኛ ኢንዱስትሪ ብሔራዊ የተካተቱ ክፍሎች ለጋምቤላ ብሔራዊ ክልላዊ መንግስት ታህሳስ 2009 = 100

Table 8a: General Consumer Price Index and Its Components for Gambella National Regional State December 2016 = 100

ወርና ዓመት	ጠቅላላ ኢንዱስትሪ	ምግብና አልኮል ያልሆኑ መጠጦች	ምግብ ነፃ ያልሆኑ ኢንዱስትሪ	ምግብ ነፃ ያልሆኑ ይኢንዱስትሪ ክፍሎች Non-food Consumer Price Index Component									
				መጠጥ ሲጃራና ትምብሆ	ልብስና መጫሚያ	የቤት ኪራይ የቤት መሥሪያ ዕቃዎች ውሃ ነጻጅና	የቤት ማስገጫዎች የቤት ቁሳቁስና የቤት ሠራተኛ	ህክምና	ትራንስፖርት	መገናኛ	መዝናኛና ባህል	ትምህርት	ሬስታራንትና ሆቴሎች
Month an Year	General Index	Food and Non-Alcoholic Beverages	Non-Food Index	Alcoholic Beverages and Tobacco	Clothing and Footwear	Housing, Water, Electricity, Gas and Other Fuels	FurnishingsHousehold Equipment and Routine Maintenance of the House	Health	Transport	Communication	Recreation and Culture	Education	Restaurants and Hotels
ታህሳስ 2009	100.0	100.0	100.0	100.0	100.0	100.0	100.0	100.0	100.0	100.0	100.0	100.0	100.0
ሐምሌ 2009 - ሰኔ 2010	110.2	112.9	107.1	129.7	119.9	99.0	115.5	84.7	115.8	104.2	123.9	100.0	114.8
ሐምሌ 2010 - ሰኔ 2011	123.2	129.8	115.6	140.0	132.4	99.4	134.1	96.4	135.3	104.7	126.5	106.9	145.2
ሐምሌ 2011 - ሰኔ 2012	148.4	159.4	135.7	187.5	152.4	121.2	145.1	104.8	145.2	111.3	144.4	152.6	158.5
ሐምሌ 2012 - ሰኔ 2013	181.3	201.0	158.7	274.9	169.9	135.2	165.0	124.5	188.0	122.5	192.8	164.8	168.7
ሐምሌ 2013 - ሰኔ 2014	244.0	284.4	197.5	292.1	278.8	156.7	255.5	161.9	212.7	155.4	304.3	233.6	204.0
2015													
ሐምሌ 2014	297.7	348.4	239.4	363.8	325.3	174.8	331.2	226.3	238.0	225.5	363.0	253.0	282.6
ነሐሴ 2014	308.2	359.6	249.1	355.3	327.7	191.1	309.1	298.4	238.7	247.0	473.5	253.0	282.6
መስከረም 2015	310.1	363.6	248.6	351.8	345.3	176.0	340.4	186.7	239.1	254.6	599.6	176.4	346.7
ጥቅምት 2015	312.3	362.9	254.1	362.0	351.5	184.4	321.2	213.2	246.8	240.1	634.5	229.3	346.7
ህዳር 2015	314.8	364.7	257.4	365.9	355.4	183.2	329.5	219.8	273.2	240.1	634.5	236.8	346.7
ታህሳስ 2015	321.2	373.6	261.0	382.6	359.2	182.9	354.9	215.8	257.1	225.5	545.3	238.4	339.6
ጥር 2015	320.8	367.3	267.3	384.1	364.9	192.5	364.2	221.8	248.2	240.1	578.2	229.3	339.6
የካቲት 2015	336.0	391.0	272.8	382.7	361.5	200.3	374.4	231.7	251.4	240.1	578.2	229.3	339.6
መጋቢት 2015	350.9	415.4	276.7	434.0	364.5	182.2	395.5	237.8	248.5	254.6	567.6	229.3	362.8
ግንቦት 2015	347.0	405.1	280.3	447.5	385.2	180.7	406.0	263.9	269.6	247.0	556.3	229.3	362.8
ግንቦት 2015	361.1	431.6	280.1	452.5	385.7	182.2	381.8	262.5	285.7	254.6	545.3	229.3	362.8

ሠንጠረዥ 9ሀI ጠቅላላ የሽግግር ዋጋ መመዘኛ ኢንዱስትሪና በሥሩ የተካተቱ ክፍሎች ለሐረሪ ብሔራዊ ክልላዊ መንግስት  
 ታህሳስ 2009 = 100

Table 9a: General Consumer Price Index and Its Components for Harari National Regional State  
 December 2016 = 100

ወርና ዓመት	ጠቅላላ ኢንዱስትሪ	ምግብና አልኮል ያልሆኑ መጠጦች	ምግብ ነክ ያልሆኑ ኢንዱስትሪ	ምግብ ነክ ያልሆኑ ይኢንዱስትሪ ክፍሎች Non-food Consumer Price Index Component									
				መጠጥ ሲጃራና ትምብሆ	ልብስና መጫሚያ	የቤት ኪራይ የቤት መሥሪያ ዕቃዎች ውሃ ነጻጅና	የቤት ማስገጫዎች የቤት ቁሳቁስና የቤት ሠራተኛ	ህክምና	ትራንስፖርት	መገናኛ	መዝናኛና ባህል	ትምህርት	ሬስታራንትና ሆቴሎች
Month an Year	General Index	Food and Non-Alcoholic Beverages	Non-Food Index	Alcoholic Beverages and Tobacco	Clothing and Footwear	Housing, Water, Electricity, Gas and Other Fuels	FurnishingsHousehold Equipment and Routine Maintenance of the House	Health	Transport	Communication	Recreation and Culture	Education	Restaurants and Hotels
ታህሳስ 2009	100.0	100.0	100.0	100.0	100.0	100.0	100.0	100.0	100.0	100.0	100.0	100.0	100.0
ሐምሌ 2009 - ሰኔ 2010	109.0	111.9	106.9	107.4	112.5	97.8	112.8	109.0	106.4	100.0	112.8	114.3	110.8
ሐምሌ 2010 - ሰኔ 2011	121.4	128.0	116.8	105.9	125.3	110.8	130.4	113.0	126.1	100.0	113.3	147.8	125.4
ሐምሌ 2011 - ሰኔ 2012	150.5	161.5	142.8	127.2	138.9	151.9	135.5	139.7	194.0	100.0	136.7	139.2	162.9
ሐምሌ 2012 - ሰኔ 2013	183.6	197.4	174.0	177.0	148.0	190.2	158.6	169.1	286.9	100.0	138.7	148.9	179.5
ሐምሌ 2013 - ሰኔ 2014	251.5	279.2	232.2	295.8	196.2	204.5	219.7	239.1	255.7	100.0	178.2	192.5	245.8
2015													
ሐምሌ 2014	302.4	334.6	279.9	358.5	231.4	218.2	285.8	297.9	308.9	100.0	207.7	212.6	324.0
ነሐሴ 2014	301.3	353.6	264.6	284.1	228.1	208.8	299.3	316.1	389.5	100.0	221.8	190.4	324.0
መስከረም 2015	316.5	357.6	287.7	323.3	225.6	220.0	308.3	304.5	361.0	100.0	231.4	201.0	386.9
ጥቅምት 2015	311.7	362.6	276.1	234.3	272.2	223.4	322.4	339.8	385.7	100.0	254.6	203.2	386.9
ህዳር 2015	317.9	363.9	285.6	292.7	252.2	213.8	306.7	350.8	385.7	100.0	255.8	207.4	386.9
ታህሳስ 2015	319.8	359.8	291.8	311.8	246.5	237.0	312.6	347.5	355.6	100.0	255.8	192.4	374.4
ጥር 2015	331.6	371.2	303.9	317.3	281.5	264.9	336.3	372.9	355.6	100.0	195.0	205.0	374.4
የካቲት 2015	347.8	384.0	322.5	403.3	257.9	263.0	335.8	380.4	330.8	100.0	272.0	210.7	374.4
መጋቢት 2015	366.9	388.9	351.5	454.9	278.3	299.7	367.5	375.3	280.1	100.0	462.7	206.2	379.3
ግንቦት 2015	379.4	400.5	364.7	489.4	282.3	299.2	371.2	387.4	385.7	100.0	456.8	203.6	379.3
ግንቦት 2015	356.9	441.3	297.8	204.5	305.1	289.4	380.4	392.9	355.6	100.0	453.5	204.4	379.3



ሠንጠረዥ 10ሀI ጠቅላላ የሽግግር ዋጋ መመዘኛ ኢንዱስትሪ ደረጃ የተካተቱ ክፍሎች ለእርግጥ ብሔራዊ ክልላዊ መንግስት ታህሳስ 2009 = 100

Table 10a: General Consumer Price Index and Its Components for Oromia National Regional State December 2016 = 100

ወርና ዓመት	ጠቅላላ ኢንዱስትሪ	ምግብና አልኮል ያልሆኑ መጠጦች	ምግብ ነጻ ያልሆኑ ኢንዱስትሪ	ምግብ ነጻ ያልሆኑ ደረጃ ኢንዱስትሪ ክፍሎች Non-food Consumer Price Index Components									
				መጠጥ ሲጃራና ትምባሆ	ልብስና መጫሚያ	የቤት ኪራይ የቤት መሥሪያ ዕቃዎች ውሃ ነጻጅና	የቤት ማስገጫዎች የቤት ቁሳቁስና የቤት ሠራተኛ	ህክምና	ትራንስፖርት	መገናኛ	መዝናኛና ባህል	ትምህርት	ሬስታራንትና ሆቴሎች
Month an Year	General Index	Food and Non-Alcoholic Beverages	Non-Food Index	Alcoholic Beverages and Tobacco	Clothing and Footwear	Housing, Water, Electricity, Gas and Other Fuels	FurnishingsHousehold Equipment and Routine Maintenance of the House	Health	Transport	Communication	Recreation and Culture	Education	Restaurants and Hotels
<b>ታህሳስ 2009</b>	<b>100.0</b>	<b>100.0</b>	<b>100.0</b>	<b>100.0</b>	<b>100.0</b>	<b>100.0</b>	<b>100.0</b>	<b>100.0</b>	<b>100.0</b>	<b>100.0</b>	<b>100.0</b>	<b>100.0</b>	<b>100.0</b>
ሐምሌ 2009 - ሰኔ 2010	115.4	116.5	114.0	100.6	141.3	116.2	119.7	69.9	112.2	100.8	114.0	117.4	106.9
ሐምሌ 2010 - ሰኔ 2011	129.9	129.8	129.9	111.6	169.1	129.4	140.9	77.4	133.6	102.8	121.7	133.4	123.0
ሐምሌ 2011 - ሰኔ 2012	153.7	160.8	144.7	129.5	183.1	140.6	153.6	99.8	167.2	101.9	131.3	137.6	140.1
ሐምሌ 2012 - ሰኔ 2013	184.6	199.1	166.0	154.6	207.3	151.2	174.3	153.3	227.5	102.0	159.1	149.0	162.9
ሐምሌ 2013 - ሰኔ 2014	255.0	285.8	215.5	204.6	257.2	194.6	259.8	229.3	251.7	109.9	240.0	182.4	207.8
2015													
ሐምሌ 2014	305.7	344.4	256.0	199.2	314.0	236.1	339.9	253.4	275.1	119.6	265.9	199.9	254.3
ነሐሴ 2014	317.1	357.2	265.5	201.3	380.4	226.6	349.4	261.9	299.7	118.2	275.8	194.9	254.3
መስከረም 2015	323.6	364.6	271.0	254.5	314.3	238.8	349.0	251.3	302.3	127.1	355.5	227.2	277.5
ጥቅምት 2015	324.1	360.7	277.2	234.3	320.5	251.4	374.4	251.6	319.7	120.3	374.1	224.5	277.5
ህዳር 2015	333.0	367.4	288.8	244.2	343.2	270.8	377.8	249.9	311.2	120.3	364.2	227.7	277.5
ታህሳስ 2015	331.8	363.8	290.7	246.6	337.4	270.1	395.1	248.7	277.9	115.9	381.1	225.4	304.5
ጥር 2015	333.1	365.2	291.9	253.8	336.7	266.5	399.6	258.9	289.7	114.6	378.1	231.2	304.5
የካቲት 2015	338.9	369.0	300.1	269.5	339.5	274.6	419.5	261.9	285.2	125.4	379.1	231.6	304.5
መጋቢት 2015	358.2	398.1	307.0	281.7	373.8	261.9	432.0	347.3	285.0	120.1	375.3	235.3	305.9
ግንቦት 2015	369.2	405.9	321.9	281.5	418.5	279.4	435.6	342.2	286.1	123.8	380.5	237.9	327.2
ግንቦት 2015	371.1	414.2	315.7	268.8	367.7	285.1	440.1	346.3	281.5	120.9	359.6	230.2	327.2

ሠንጠረዥ 11 ሀገር ጠቅላላ የሽግግር ዋጋ መመዘኛ ኢንዱስትሪ ደረጃ የተካተቱ ክፍሎች ለደቡብ ብሔራዊ ክልላዊ መንግስት  
 ታህሳስ 2009 = 100

Table 11a: General Consumer Price Index and Its Components for SNNP National Regional State  
 December 2016 = 100

ወርና ዓመት	ጠቅላላ ኢንዱስትሪ	ምግብና አልኮል ያልሆኑ መጠጦች	ምግብ ነክ ያልሆኑ ኢንዱስትሪ	ምግብ ነክ ያልሆኑ ይኢንዱስትሪ ክፍሎች Non-food Consumer Price Index Component									
				መጠጥ ሲጃራና ትምብሆ	ልብስ መጫሚያ	የቤት ኪራይ የቤት መሥሪያ ዕቃዎች ውሃ ነጻጅና	የቤት ማስገጫዎች የቤት ቁሳቁስና የቤት ሠራተኛ	ህክምና	ትራንስፖርት	መገናኛ	መዝናኛና ባህል	ትምህርት	ሬስታራንትና ሆቴሎች
Month an Year	General Index	Food and Non-Alcoholic Beverages	Non-Food Index	Alcoholic Beverages and Tobacco	Clothing and Footwear	Housing, Water, Electricity, Gas and Other Fuels	FurnishingsHousehold Equipment and Routine Maintenance of the House	Health	Transport	Communication	Recreation and Culture	Education	Restaurants and Hotels
<b>ታህሳስ 2009</b>	<b>100.0</b>	<b>100.0</b>	<b>100.0</b>	<b>100.0</b>	<b>100.0</b>	<b>100.0</b>	<b>100.0</b>	<b>100.0</b>	<b>100.0</b>	<b>100.0</b>	<b>100.0</b>	<b>100.0</b>	<b>100.0</b>
ሐምሌ 2009 - ሰኔ 2010	117.8	120.5	114.3	108.4	112.2	114.0	128.8	111.3	109.7	100.2	119.1	112.8	118.7
ሐምሌ 2010 - ሰኔ 2011	129.5	132.1	126.1	124.1	127.5	120.0	147.5	120.2	119.6	72.5	129.1	129.3	140.2
ሐምሌ 2011 - ሰኔ 2012	160.3	164.5	154.9	141.3	127.8	166.4	158.2	129.0	148.5	70.6	146.4	136.6	165.2
ሐምሌ 2012 - ሰኔ 2013	205.6	214.2	194.5	181.0	145.1	221.7	180.1	147.3	212.8	71.6	173.1	142.3	193.2
ሐምሌ 2013 - ሰኔ 2014	277.5	310.4	235.0	226.7	187.0	249.1	271.1	198.3	220.0	72.1	264.3	171.8	260.0
2015													
ሐምሌ 2014	329.8	372.4	274.7	270.2	221.3	273.6	362.5	224.1	281.6	71.2	318.4	184.8	316.5
ነሐሴ 2014	336.6	382.2	277.5	266.1	226.6	276.4	368.9	256.4	264.3	71.3	326.0	190.4	316.5
መስከረም 2015	342.6	386.4	286.0	264.1	232.9	291.3	376.3	222.3	275.4	70.9	365.2	210.5	326.5
ጥቅምት 2015	351.3	393.6	296.7	275.6	244.7	300.0	393.1	230.7	281.4	70.7	457.0	207.8	326.5
ህዳር 2015	358.6	398.1	307.5	276.7	252.0	313.7	415.1	257.1	284.2	70.5	460.1	207.8	326.5
ታህሳስ 2015	358.8	392.8	314.8	296.9	250.3	325.8	413.4	250.4	271.5	70.2	456.3	208.7	346.5
ጥር 2015	357.4	393.7	310.6	297.3	263.1	306.1	421.3	264.6	288.5	71.3	450.4	207.1	346.5
የካቲት 2015	369.4	407.7	319.9	302.2	267.0	321.8	434.2	273.7	286.1	70.4	451.6	204.6	346.5
መጋቢት 2015	391.0	433.3	336.3	321.2	275.6	342.3	444.7	268.7	292.6	70.6	430.0	204.2	400.8
ግንቦት 2015	401.0	446.3	342.3	324.5	289.9	350.2	449.6	255.9	287.9	70.6	436.5	210.9	400.8
ግንቦት 2015	398.8	446.4	337.1	316.6	292.1	329.7	461.2	285.1	376.9	70.6	436.3	207.0	346.4

ሠንጠረዥ 12 ሀገር ጠቅላላ የሽግግር ዋጋ መመዘኛ ኢንዱስትሪ ደረጃ የተካተቱ ክፍሎች ለሱማሌ ብሔራዊ ክልላዊ መንግስት  
 ታህሳስ 2009 = 100

Table 12a: General Consumer Price Index and Its Components for Somali National Regional State  
 December 2016 = 100

ወርና ዓመት	ጠቅላላ ኢንዱስትሪ	ምግብና አልኮል ያልሆኑ መጠጦች	ምግብ ነጻ ያልሆኑ ኢንዱስትሪ	ምግብ ነጻ ያልሆኑ ደረጃ ኢንዱስትሪ ክፍሎች Non-food Consumer Price Index Component									
				መጠጥ ሲጃራና ትምብሆ	ልብስና መጫሚያ	የቤት ኪራይ የቤት መሥሪያ ዕቃዎች ውሃ ነጻጅና	የቤት ማስገጫዎች የቤት ቁሳቁስና የቤት ሠራተኛ	ህክምና	ትራንስፖርት	መገናኛ	መዝናኛና ባህል	ትምህርት	ሬስታራንትና ሆቴሎች
Month an Year	General Index	Food and Non-Alcoholic Beverages	Non-Food Index	Alcoholic Beverages and Tobacco	Clothing and Footwear	Housing, Water, Electricity, Gas and Other Fuels	FurnishingsHousehold Equipment and Routine Maintenance of the House	Health	Transport	Communication	Recreation and Culture	Education	Restaurants and Hotels
<b>ታህሳስ 2009</b>	<b>100.0</b>	<b>100.0</b>	<b>100.0</b>	<b>100.0</b>	<b>100.0</b>	<b>100.0</b>	<b>100.0</b>	<b>100.0</b>	<b>100.0</b>	<b>100.0</b>	<b>100.0</b>	<b>100.0</b>	<b>100.0</b>
ሐምሌ 2009 - ሰኔ 2010	110.4	113.7	106.7	110.6	114.5	98.1	113.3	123.7	113.5	100.5	143.7	122.9	113.6
ሐምሌ 2010 - ሰኔ 2011	124.1	132.5	114.7	107.0	144.7	102.0	129.4	147.6	130.1	102.8	156.7	134.0	131.8
ሐምሌ 2011 - ሰኔ 2012	149.5	159.4	138.5	133.9	171.4	128.3	134.2	136.0	187.3	103.0	186.1	188.8	153.9
ሐምሌ 2012 - ሰኔ 2013	170.6	181.0	159.1	153.4	189.7	149.0	154.0	147.5	253.7	103.4	215.7	202.9	176.9
ሐምሌ 2013 - ሰኔ 2014	231.6	260.3	199.7	223.9	232.4	160.8	232.1	187.6	280.3	105.5	311.5	251.3	203.2
2015													
ሐምሌ 2014	280.2	332.9	221.8	247.5	279.8	147.0	317.1	251.4	397.6	110.1	421.3	263.0	225.0
ነሐሴ 2014	283.3	326.2	235.8	302.5	272.8	136.9	317.3	219.3	476.9	115.8	473.0	280.9	225.0
መስከረም 2015	305.7	340.2	267.5	350.8	337.5	154.3	340.3	244.0	473.6	110.4	496.9	357.2	256.4
ጥቅምት 2015	318.4	348.1	285.5	360.5	439.9	148.7	374.0	237.8	443.9	114.2	574.5	353.1	256.4
ህዳር 2015	326.9	355.6	295.1	358.5	405.2	178.9	387.8	246.3	520.2	115.3	590.8	370.1	256.4
ታህሳስ 2015	327.0	353.9	297.2	373.3	430.8	165.8	418.1	252.3	413.3	114.1	533.9	373.8	264.7
ጥር 2015	334.8	360.6	306.2	378.7	448.2	180.4	402.7	242.6	414.8	114.3	555.2	376.7	264.7
የካቲት 2015	337.1	360.0	311.8	370.6	487.6	182.5	419.4	243.9	414.8	114.8	609.4	395.6	264.7
መጋቢት 2015	339.1	368.4	306.7	355.8	480.2	179.3	422.9	244.1	434.8	116.0	618.1	388.3	272.7
ሚያዝያ 2015	338.9	370.0	304.4	339.6	503.4	174.6	431.8	240.1	416.8	115.2	576.6	397.5	272.7
ግንቦት 2015	342.6	380.9	300.2	352.8	506.3	157.3	411.2	247.5	418.3	117.4	604.5	373.6	272.7

ሠንጠረዥ 13ሀI ጠቅላላ የሽግግር ዋጋ መመዘኛ ኢንዱስትሪ በሥሩ የተካተቱ ክፍሎች ለትግራይ ብሔራዊ ክልላዊ መንግስት  
 ታህሳስ 2009 = 100

Table 13a: General Consumer Price Index and Its Components for Tigray National Regional State  
 December 2016 = 100

ወርና ዓመት	ጠቅላላ ኢንዱስትሪ	ምግብና አልኮል ያልሆኑ መጠጦች	ምግብ ነጻ ያልሆኑ ኢንዱስትሪ	ምግብ ነጻ ያልሆኑ ኢንዱስትሪ ክፍሎች Non-food Consumer Price Index Component									
				መጠጦች ሲጃራና ትምብሆ	ልብስና መጫጫያ	የቤት ኪራይ የቤት መሥሪያ ዕቃዎች ውሃ ነጻጅና	የቤት ማስገጫዎች የቤት ቁሳቁስና የቤት ሠራተኛ	ህክምና	ትራንስፖርት	መገናኛ	መዝናኛና ባህል	ትምህርት	ሬስቶራንትና ሆቴሎች
Month an Year	General Index	Food and Non-Alcoholic Beverages	Non-Food Index	Alcoholic Beverages and Tobacco	Clothing and Footwear	Housing, Water, Electricity, Gas and Other Fuels	FurnishingsHousehold Equipment and Routine Maintenance of the House	Health	Transport	Communication	Recreation and Culture	Education	Restaurants and Hotels
<b>ታህሳስ 2009</b>	<b>100.0</b>	<b>100.0</b>	<b>100.0</b>	<b>100.0</b>	<b>100.0</b>	<b>100.0</b>	<b>100.0</b>	<b>100.0</b>	<b>100.0</b>	<b>100.0</b>	<b>100.0</b>	<b>100.0</b>	<b>100.0</b>
ሐምሌ 2009 - ሰኔ 2010	114.0	118.0	110.6	107.1	105.6	111.0	108.5	108.0	109.5	100.0	83.8	89.2	120.4
ሐምሌ 2010 - ሰኔ 2011	136.5	145.4	128.9	124.1	123.4	132.0	126.8	133.1	112.2	100.0	93.2	109.5	144.1
ሐምሌ 2011 - ሰኔ 2012	169.6	183.4	158.0	162.3	148.8	169.2	147.8	154.6	119.9	100.0	114.8	120.9	177.3
ሐምሌ 2012 - ሰኔ 2013	210.4	236.4	188.4	248.6	172.7	192.6	154.7	168.6	122.4	100.0	122.6	152.4	239.4
ሐምሌ 2013 - ሰኔ 2014	213.8	239.2	192.3	264.6	179.3	194.6	154.0	168.3	116.2	100.0	122.7	160.6	248.4

ts	ወርና ዓመት
ሌሎች ዕቃዎችና አገልግሎት ቶች	
Misellaneous Goods and services	Month an Year
100.0	December 2016
108.0	July 2017 - June 2018
123.6	July 2018 - June 2019
142.6	July 2019 - June 2021
167.7	July 2020 - June 2021
216.3	July 2021 - June 2022
243.0	April "
250.2	May "
268.2	June "
	2022/2023
276.2	July 2022
287.7	August "
299.1	September "
314.3	October "
327.4	November "
337.9	December "
344.8	January 2023
349.6	February "
360.1	March "
365.5	April "
367.6	May "
46.9	

ts	
ሌሎች ዕቃዎችና አገልግሎት ቶች	ወርና ዓመት
Misellaneous Goods and services	Month an Year
100.0	December 2016
109.5	July 2017 - June 2018
125.8	July 2018 - June 2019
141.6	July 2019 - June 2020
165.2	July 2020 - June 2021
216.2	July 2021 - June 2022
273.8	July 2022
283.3	August "
292.4	September "
301.1	Ocober "
323.0	November "
342.0	December "
353.1	January 2023
362.9	February "
369.1	March "
369.5	April "
377.2	May "

ts	
<p>ሌሎች ዕቃዎችና አገልግሎት ቶች</p>	<p>ወርና ዓመት</p>
<p>Misellaneous Goods and services</p>	<p>Month an Year</p>
100.0	December 2016
107.5	July 2017 - June 2018
121.9	July 2018 - June 2019
145.9	July 2019 - June 2020
156.0	July 2020 - June 2021
206.2	July 2021 - June 2022
	2022/2023
252.0	July 2022
276.7	August "
309.5	September "
355.7	October "
381.4	November "
357.0	December "
403.7	January 2023
401.5	February "
408.3	March "
422.5	April "
439.8	May "

ts	
ሌሎች ዕቃዎችና አገልግሎ ቶች	ወርና ዓመት
Misellaneous Goods and services	Month an Year
100.0	December 2016
109.0	July 2017 - June 2018
122.3	July 2018 - June 2019
132.8	July 2019 - June 2020
157.0	July 2020 - June 2021
191.5	July 2021 - June 2022
	2022/2023
268.6	July 2022
267.3	August "
271.1	September "
313.8	October "
334.5	November "
362.1	December "
360.7	January 2023
352.5	February "
375.2	March "
365.8	April "
365.5	May "



ts	
<p>ሌሎች ዕቃዎችና አገልግሎት ቶች</p>	<p>ወርና ዓመት</p>
<p>Misellaneous Goods and services</p>	<p>Month an Year</p>
100.0	December 2016
109.4	July 2017 - June 2018
122.9	July 2018 - June 2019
151.1	July 2019 - June 2020
177.8	July 2020 - June 2021
244.9	July 2021 - June 2022
	2022/2023
334.6	July 2022
335.8	August "
378.9	September "
417.3	October "
429.4	November "
433.8	December "
441.0	January 2023
466.7	February "
493.3	March "
530.8	April "
505.3	May "

ts	
<p>ሌሎች ዕቃዎችና አገልግሎ ቶች</p>	<p>ወርና ዓመት</p>
<p>Misellaneous Goods and services</p>	<p>Month an Year</p>
100.0	December 2016
104.3	July 2017 - June 2018
118.3	July 2018 - June 2019
132.8	July 2019 - June 2020
135.5	July 2020 - June 2021
178.4	July 2021 - June 2022
	2022/2023
232.5	July 2022
249.7	August "
268.5	September "
300.0	October "
310.6	November "
345.2	December "
355.6	January 2023
383.9	February "
365.4	March "
394.5	April "
419.3	May "

ts	
ሌሎች ዕቃዎችና አገልግሎ ቶች	ወርና ዓመት
Misellaneous Goods and services	Month an Year
100.0	December 2016
98.5	July 2017 - June 2018
106.1	July 2018 - June 2019
115.8	July 2019 - June 2020
120.1	July 2020 - June 2021
184.6	July 2021 - June 2022
	2022/2023
224.8	July 2022
246.7	August "
247.4	September "
272.2	October "
287.8	November "
324.2	December "
323.4	January 2023
337.5	February "
382.1	March "
359.9	April "
361.0	May "

ts	
ሌሎች ዕቃዎችና አገልግሎ ቶች	ወርና ዓመት
Misellaneous Goods and services	Month an Year
100.0	December 2016
106.2	July 2017 - June 2018
124.9	July 2018 - June 2019
137.9	July 2019 - June 2020
171.7	July 2020 - June 2021
240.7	July 2021 - June 2022
	2022/2023
312.5	July 2022
321.7	August "
356.7	September "
348.3	October "
370.6	November "
386.1	December "
370.3	January 2023
379.2	February "
408.0	March "
419.0	April "
421.5	May "

ts	
ሌሎች ዕቃዎችና አገልግሎ ቶች	ወርና ዓመት
Misellaneous Goods and services	Month an Year
100.0	December 2016
105.2	July 2017 - June 2018
120.5	July 2018 - June 2019
141.3	July 2019 - June 2020
168.7	July 2020 - June 2021
226.5	July 2021 - June 2022
	2022/2023
293.6	July 2022
309.1	August "
329.0	September "
327.6	October "
340.1	November "
347.9	December "
352.8	January 2023
364.7	February "
374.1	March "
380.7	April "
386.0	May "

ts	
ሌሎች ዕቃዎችና አገልግሎት ቶች	ወርና ዓመት
Misellaneous Goods and services	Month an Year
100.0	December 2016
110.9	July 2017 - June 2018
127.9	July 2018 - June 2019
147.3	July 2019 - June 2020
169.5	July 2020 - June 2021
230.8	July 2021 - June 2022
	2022/2023
297.2	July 2022
310.6	August "
316.0	September "
342.8	October "
352.7	November "
364.1	December "
374.4	January 2023
374.6	February "
387.0	March "
399.9	April "
398.5	May "

ts	
ሌሎች ዕቃዎችና አገልግሎ ቶች	ወርና ዓመት
Misellaneous Goods and services	Month an Year
100.0	December 2016
108.8	July 2017 - June 2018
131.9	July 2018 - June 2019
153.1	July 2019 - June 2020
180.0	July 2020 - June 2021
237.3	July 2021 - June 2022
	2022/2023
301.6	July 2022
338.9	August "
346.8	September "
374.4	October "
388.7	November "
374.2	December "
399.6	January 2023
402.1	February "
407.2	March "
424.7	April "
413.4	May "

ts	
<p>ሌሎች ዕቃዎችና አገልግሎ ቶች</p>	<p>ወርና ዓመት</p>
<p>Miselllanous Goods and services</p>	<p>Month an Year</p>
<p>100.0</p>	<p>December 2016</p>
<p>109.2</p>	<p>July 2017 - June 2018</p>
<p>123.5</p>	<p>July 2018 - June 2019</p>
<p>149.2</p>	<p>July 2019 - June 2020</p>
<p>179.4</p>	<p>July 2020 - June 2021</p>
<p>183.2</p>	<p>July 2021 - June 2022</p>



ሠንጠረዥ 1 ለገቢ ጠቅላላ የምግብ የሽግግር ዋጋ መመዘኛ ኢንዱክሽን በሥሩ የተካተቱ ክፍሎች በአገር አቀፍ ደረጃ

ታህሳስ 2009 = 100

Table 1b: General Food Consumer Price Index and Its Components at Country Level

December 2016 = 100

ወርና ዓመት	ጠቅላላ ግብዓት											ወርና ዓመት
	ምግብና አልኮሎሊክ መጠጦች	ዳቦና ለህል	ሥጋ	አሳና የባህር ምግቦች	ወተት አይብና ዕንቁላል	ዘይትና ቅባቶች	ፍራፍሬ	አትክልትና ጥራጥሬ	ሰኳር ማርና ጅኮሌት	ሌሎች ምግቦች	አልኮሎሊክ መጠጦች	
Month an Year	Food and Non-Alcoholic Beverages	Bread and Cereals	Meat (ND)	Fish and Seafood	Milk, cheese and eggs (ND)	Oils and fats (ND)	Fruit (ND)	Vegetables	Sugar, jam, honey, chocolate.	Food products n.e.c. (ND)	Non-Alcoholic Beverages and coffee	Month an Year
ታህሳስ 2009	100.0	100.0	100.0	100.0	100.0	100.0	100.0	100.0	100.0	100.0	100.0	December 2016
ሐምሌ 2009 - ሰኔ 2010	118.0	126.7	121.0	104.3	114.7	96.9	129.1	115.3	96.4	129.5	106.2	July 2017 - June 2018
ሐምሌ 2010 - ሰኔ 2011	133.5	144.7	143.5	113.7	134.6	99.0	145.6	135.1	106.5	141.5	111.0	July 2018 - June 2019
ሐምሌ 2011 - ሰኔ 2012	164.7	185.6	178.4	123.4	152.8	111.4	181.6	172.8	110.0	169.9	125.2	July 2019 - June 2021
ሐምሌ 2012 - ሰኔ 2013	202.9	234.9	203.8	154.9	186.0	147.4	189.6	203.9	114.6	216.9	160.4	July 2020 - June 2021
ሐምሌ 2013 - ሰኔ 2014	284.7	334.2	266.9	208.8	251.7	275.4	248.4	256.8	139.6	298.1	256.5	July 2021 - June 2022
ጧይ 2014	305.2	347.6	277.5	232.8	274.9	303.1	262.0	281.5	145.5	310.8	303.9	April "
ግንቦት 2014	316.8	354.1	307.5	257.4	303.9	318.6	259.1	294.3	146.6	314.9	312.6	May "
ሰኔ 2014	329.0	369.2	324.5	289.0	326.4	349.4	275.3	298.0	152.2	319.3	320.0	June "
ግንቦት 2015												2022/2023
ሐምሌ 2014	341.2	394.0	332.5	378.1	341.0	390.2	291.0	289.2	158.4	319.5	332.0	July 2022
ነሐሴ 2014	352.3	404.0	342.7	414.6	323.6	397.5	323.4	306.0	160.1	334.7	351.4	August "
መስከረም 2015	359.6	404.3	352.8	412.7	332.1	413.0	327.0	319.3	170.9	335.1	365.6	September "
ጥቅምት 2015	358.7	409.7	355.1	430.1	331.4	395.9	345.7	311.1	166.2	335.5	370.2	October "
ህዳር 2015	362.1	414.8	356.9	430.8	345.3	406.5	345.4	310.2	173.1	338.8	366.4	November "
ታህሳስ 2015	360.4	417.8	359.9	452.7	349.3	408.3	365.0	301.3	172.3	340.7	350.0	December "
ጥር 2015	365.4	422.5	371.8	456.1	364.4	389.4	365.4	313.8	182.8	340.2	351.7	January 2023
የካቲት 2015	371.3	433.1	372.1	466.0	364.7	388.9	376.3	326.1	188.3	343.0	342.7	February "
መጋቢት 2015	397.2	469.2	378.2	457.2	369.9	399.4	401.4	377.5	208.8	344.6	343.8	March "
ጧይ 2015	402.2	483.0	401.9	461.7	375.3	380.2	405.3	371.3	209.4	352.3	349.7	April "
ግንቦት 2015	406.9	493.8	413.9	463.1	381.4	383.1	395.5	374.1	218.7	350.2	339.6	May "
	28.5	39.4	34.6	79.9	25.5	20.2	52.6	27.1	49.2	11.2	8.6	

ሠንጠረዥ 3 ለገጠና የምግብ ዕቃዎች ዋጋ መመዘኛ ኢንዱክስ በሥሩ የተካተቱ ክፍሎች ለአዲስ አበባ ከተማ አስተዳደር

ታህሳስ 2009 = 100

Table 3b: General Food Consumer Price Index and Its Components for Addis Ababa City Administration  
December 2016 = 100

ወርና ዓመት	ዕቃዎች ስርዓት											ወርና ዓመት
	ምግብና አልኮሎል ያልሆኑ መጠጦች	ዳቦና ለህል	ሥጋ	አሳና የባህር ምግቦች	ወተት አይብና ዕንቁላል	ዘይትና ቅባቶች	ፍራፍሬ	አትክልትና ጥራጥሬ	ሰኳር ማርና ጅኮሌት	ሌሎች ምግቦች	አልኮሎል ያልሆኑ መጠጦች	
Month an Year	Food and Non-Alcoholic Beverages	Bread and Cereals	Meat (ND)	Fish and Seafood	Milk, cheese and eggs (ND)	Oils and fats (ND)	Fruit (ND)	Vegetables	Sugar, jam, honey, chocolate.	Food products n.e.c. (ND)	Non-Alcoholic Beverages and coffee	Month an Year
ታህሳስ 2009	100.0	100.0	100.0	100.0	100.0	100.0	100.0	100.0	100.0	100.0	100.0	December 2016
ሐምሌ 2009 - ሰኔ 2010	112.6	112.8	118.1	103.3	110.7	110.9	136.6	107.5	100.0	126.6	104.3	July 2017 - June 2018
ሐምሌ 2009 - ሰኔ 2010	129.4	129.0	136.3	113.3	129.5	117.9	149.1	129.1	103.5	156.3	110.3	July 2018 - June 2019
ሐምሌ 2011 - ሰኔ 2012	163.0	164.6	173.5	132.8	147.4	139.4	181.9	170.7	114.1	193.4	125.3	July 2019 - June 2020
ሐምሌ 2012 - ሰኔ 2013	205.7	212.0	204.2	185.5	168.7	173.6	188.7	194.4	133.3	389.3	156.8	July 2020 - June 2021
ሐምሌ 2013 - ሰኔ 2014	281.1	274.2	280.4	272.6	228.3	302.2	249.1	243.0	177.7	586.0	243.5	July 2021 - June 2022
2015												2022/2023
ሐምሌ 2014	331.6	316.9	345.5	350.9	304.4	453.2	296.2	274.7	230.9	510.6	305.9	July 2022
ነሐሴ 2014	350.3	319.8	353.3	309.9	293.4	501.0	326.2	321.2	230.8	539.7	319.1	August "
መስከረም 2015	356.9	324.2	369.9	305.8	315.6	456.3	344.0	348.2	233.3	512.1	325.4	September "
ጥቅምት 2015	358.6	334.5	375.9	328.8	323.4	495.6	352.0	311.7	234.5	530.2	332.7	October "
ህዳር 2015	358.2	335.3	378.5	302.4	322.7	493.2	339.9	300.4	235.4	556.4	338.0	November "
ታህሳስ 2015	357.0	340.4	383.6	322.1	315.0	492.8	385.4	282.7	234.7	544.8	349.0	December "
ጥር 2015	360.5	346.8	407.2	335.7	336.1	414.3	391.8	286.4	327.4	550.6	345.4	January 2023
ፀደቅ 2015	376.2	381.0	402.3	332.2	344.8	413.3	431.5	308.8	327.6	539.2	351.5	February "
መጋቢት 2015	407.9	448.1	410.1	336.4	348.8	419.5	427.9	343.1	341.4	536.3	347.7	March "
ሚያዝያ 2015	429.7	463.6	443.7	365.7	357.2	426.2	412.4	384.0	340.3	546.9	351.3	April "
ግንቦት 2015	437.3	465.5	464.2	304.8	367.2	430.6	403.2	395.7	329.6	550.3	352.5	May "

ሠንጠረዥ 4 ለገቢ ጠቅላላ የምግብ የሽግግር ዋጋ መመዘኛ ኢንዱክሽን በሥሩ የተካተቱ ክፍሎች ለአፋር ብሔራዊ ክልላዊ መንግስት

ታህሳስ 2009 = 100

Table 4b: General Food Consumer Price Index and Its Components for Afar National Regional State  
December 2016 = 100

ወርና ዓመት	ጠቅላላ ግብዓት											ወርና ዓመት
	ምግብና አልኮሎል ያልሆኑ መጠጦች	ዳቦና ለህል	ሥጋ	አሳና የባህር ምግቦች	ወተት አይብና ዕንቁላል	ዘይትና ቅባቶች	ፍራፍሬ	አትክልትና ጥራጥሬ	ስኳር ማርና ቼኮሌት	ሌሎች ምግቦች	አልኮሎል ያልሆኑ መጠጦች	
Month an Year	Food and Non-Alcoholic Beverages	Bread and Cereals	Meat (ND)	Fish and Seafood	Milk, cheese and eggs (ND)	Oils and fats (ND)	Fruit (ND)	Vegetables	Sugar, jam, honey, chocolate.	Food products n.e.c. (ND)	Non-Alcoholic Beverages and coffee	Month an Year
ታህሳስ 2009	100.0	100.0	100.0	100.0	100.0	100.0	100.0	100.0	100.0	100.0	100.0	December 2016
ሐምሌ 2009 - ሰኔ 2010	114.7	118.2	122.3	130.1	103.7	108.6	107.9	120.2	110.2	139.9	111.7	July 2017 - June 2018
ሐምሌ 2009 - ሰኔ 2010	127.7	139.8	158.9	161.6	112.7	100.1	119.8	147.4	89.5	104.6	116.7	July 2018 - June 2019
ሐምሌ 2011 - ሰኔ 2012	161.2	182.0	202.4	180.4	124.9	166.5	133.9	198.1	122.7	110.6	133.8	July 2019 - June 2020
ምሌ 2012 - ሰኔ 2013	197.0	212.7	210.0	202.8	177.4	211.5	148.1	227.1	141.4	203.0	158.6	July 2020 - June 2021
ሐምሌ 2013 - ሰኔ 2014	278.2	311.2	263.4	247.1	234.0	357.0	174.0	295.7	197.4	313.4	236.6	July 2021 - June 2022
2015												2022/2023
ሐምሌ 2014	337.6	355.8	377.4	260.4	304.9	480.2	200.4	356.4	247.6	312.3	280.9	July 2022
ነሐሴ 2014	356.8	375.8	387.9	268.4	339.7	480.2	235.6	361.9	247.6	330.8	302.6	August "
መስከረም 2015	374.0	376.1	389.6	262.5	353.9	480.5	253.0	464.4	247.6	325.6	326.0	September "
ጥቅምት 2015	376.6	382.6	388.0	298.6	372.5	479.1	247.0	430.7	247.6	313.5	332.1	October "
ህዳር 2015	380.2	395.6	405.8	293.8	378.8	499.4	225.6	386.0	247.6	314.4	338.8	November "
ታህሳስ 2015	372.2	400.7	373.1	295.6	361.8	518.4	229.4	334.7	247.6	332.2	341.6	December "
ጥር 2015	385.1	397.6	366.6	332.1	379.6	521.6	246.2	317.8	474.2	317.8	356.1	January 2023
የካቲት 2015	390.5	411.7	397.4	315.6	391.7	565.0	248.4	312.1	371.5	324.2	344.1	February "
መጋቢት 2015	419.6	447.1	461.1	343.3	398.1	620.3	275.3	379.8	371.5	323.3	344.0	March "
ግንቦት 2015	429.1	456.2	462.8	390.5	431.5	647.0	283.7	355.5	371.5	315.5	346.7	April "
ግንቦት 2015	436.1	449.6	462.8	365.6	403.6	643.7	383.6	457.8	412.7	314.5	363.4	May "

ሠንጠረዥ 5 ለገቢ ጠቅላላ የምግብ የሽግግር ዋጋ መመዘኛ ኢንዱክሽን በሥሩ የተካተቱ ክፍሎች ለአማራ ብሔራዊ ክልላዊ መንግስት  
 ታህሳስ 2009 = 100  
 Table 5b: General Food Consumer Price Index and Its Components for Amhara National Regional State  
 December 2016 = 100

ወርና ዓመት	ዳታ ለውጥ ስርዓት											ወርና ዓመት
	ምግብና አልኮሎል ያልሆኑ መጠጦች	ጸባይ ለህል	ሥጋ	አሳና የባህር ምግቦች	ወተት አይብና ዕንቁላል	ዘይትና ቅባቶች	ፍራፍሬ	አትክልትና ጥራጥሬ	ስኳር ማርና ጅኮሌት	ሌሎች ምግቦች	አልኮሎል ያልሆኑ መጠጦች	
Month an Year	Food and Non-Alcoholic Beverages	Bread and Cereals	Meat (ND)	Fish and Seafood	Milk, cheese and eggs (ND)	Oils and fats (ND)	Fruit (ND)	Vegetables	Sugar, jam, honey, chocolate.	Food products n.e.c. (ND)	Non-Alcoholic Beverages and coffee	Month an Year
ታህሳስ 2009	100.0	100.0	100.0	0.0	100.0	100.0	100.0	100.0	100.0	100.0	100.0	December 2016
ሐምሌ 2009 - ሰኔ 2010	122.0	132.4	126.2	0.0	127.8	105.1	132.9	107.7	102.7	130.0	105.1	July 2017 - June 2018
ሐምሌ 2009 - ሰኔ 2010	138.2	155.7	152.2	0.0	144.9	108.5	142.2	130.7	106.5	135.2	108.6	July 2018 - June 2019
ሐምሌ 2011 - ሰኔ 2012	171.0	200.5	184.6	0.0	170.7	122.7	186.7	153.1	120.7	175.6	118.4	July 2019 - June 2020
ምሌ 2012 - ሰኔ 2013	202.8	252.7	209.0	0.0	198.2	167.0	203.8	164.1	140.9	200.4	154.1	July 2020 - June 2021
ሐምሌ 2013 - ሰኔ 2014	275.5	335.9	277.9	0.0	268.9	354.2	270.0	201.2	209.0	266.0	228.1	July 2021 - June 2022
2015												2022/2023
ሐምሌ 2014	332.7	413.5	364.0	0.0	352.4	467.6	333.2	228.7	248.7	296.6	289.1	July 2022
ነሐሴ 2014	348.6	418.4	364.2	0.0	360.5	494.0	352.2	252.4	243.2	325.7	301.3	August "
መስከረም 2015	351.7	413.9	394.4	0.0	352.2	501.3	362.9	257.9	250.1	325.1	303.3	September "
ጥቅምት 2015	348.1	411.4	388.0	0.0	361.5	526.7	367.3	233.6	248.9	328.3	310.6	October "
ህዳር 2015	349.6	424.0	386.0	0.0	359.2	524.0	368.7	228.7	246.9	325.7	309.2	November "
ታህሳስ 2015	351.5	429.2	389.2	0.0	387.2	516.0	399.8	222.0	245.6	330.4	311.7	December "
ጥር 2015	353.4	440.5	408.0	0.0	397.0	460.8	413.0	224.4	246.9	327.6	310.2	January 2023
የካቲት 2015	359.2	451.7	407.5	0.0	383.6	447.4	410.1	230.5	265.6	334.4	316.4	February "
መጋቢት 2015	380.1	497.5	418.8	0.0	379.4	502.3	426.4	243.0	317.9	336.4	312.4	March "
ሚያዝያ 2015	388.6	511.1	452.9	0.0	397.5	496.3	437.3	253.4	295.3	333.4	312.9	April "
ግንቦት 2015	395.4	518.9	479.1	0.0	416.7	477.9	437.9	260.3	318.7	335.9	318.2	May "

ሠንጠረዥ 6 ለገጠና የምግብ የሽግግር ዋጋ መመዘኛ ኢንዱክሽን በሥራ የተካተቱ ክፍሎች ለቤ/ጉሙዝ ብሔራዊ ክልላዊ መንግስት  
 ታህሳስ 2009 = 100  
 Table 6b: General Food Consumer Price Index and Its Components for Beneshangul-Gumuz National Regional State  
 December 2016 = 100

ወርና ዓመት	ጠቅላላ ስርዓት											ወርና ዓመት
	ምግብና አልኮሎሊክ መጠጦች	ጸባይ	ሥጋ	ገባፊ ምግቦች	ወተት አይብና ዕንቁላል	ዘይትና ቅባቶች	ፍራፍሬ	አትክልትና ጥራጥሬ	ስኳር ማርና ጭኮሌት	ሌሎች ምግቦች	አልኮሎሊክ መጠጦች	
Month an Year	Food and Non-Alcoholic Beverages	Bread and Cereals	Meat (ND)	Fish and Seafood	Milk, cheese and eggs (ND)	Oils and fats (ND)	Fruit (ND)	Vegetables	Sugar, jam, honey, chocolate.	Food products n.e.c. (ND)	Non-Alcoholic Beverages and coffee	Month an Year
ታህሳስ 2009	100.0	100.0	100.0	100.0	100.0	100.0	100.0	100.0	100.0	100.0	100.0	December 2016
ሐምሌ 2009 - ሰኔ 2010	120.1	140.8	123.4	117.3	107.4	108.7	97.6	113.8	110.2	125.7	95.6	July 2017 - June 2018
ሐምሌ 2009 - ሰኔ 2010	133.8	149.3	149.3	122.5	114.8	113.4	140.6	135.1	112.8	144.7	101.7	July 2018 - June 2019
ሐምሌ 2011 - ሰኔ 2012	173.8	202.1	182.0	139.4	123.6	130.4	137.4	192.5	125.3	200.0	112.1	July 2019 - June 2020
ምሌ 2012 - ሰኔ 2013	223.7	255.9	222.6	154.5	122.2	173.9	179.4	226.9	149.7	374.2	149.2	July 2020 - June 2021
ሐምሌ 2013 - ሰኔ 2014	323.9	382.1	320.5	225.7	152.9	306.2	225.6	290.1	188.0	547.8	238.3	July 2021 - June 2022
2015												2022/2023
ሐምሌ 2014	401.5	461.2	452.7	276.1	191.2	482.1	256.7	343.3	241.7	545.5	314.0	July 2022
ነሐሴ 2014	404.8	452.5	462.8	310.6	220.8	414.2	267.7	378.1	272.3	517.1	329.9	August "
መስከረም 2015	409.8	446.3	463.9	292.8	197.1	439.5	270.2	383.2	447.5	510.9	340.3	September "
ጥቅምት 2015	409.3	465.3	453.7	335.2	190.4	489.1	272.9	360.4	275.7	491.1	347.5	October "
ህዳር 2015	430.0	496.9	457.5	343.8	204.6	474.1	306.6	388.9	284.5	538.7	355.5	November "
ታህሳስ 2015	427.6	506.5	462.8	377.1	198.9	526.8	326.1	347.8	278.5	555.3	344.8	December "
ጥር 2015	419.0	500.3	490.7	382.4	229.9	398.6	280.6	361.2	285.6	534.7	335.8	January 2023
ፕላይ 2015	423.6	486.6	466.4	431.3	224.5	486.9	488.5	374.4	345.1	521.9	319.8	February "
መጋቢት 2015	438.1	526.2	479.9	269.6	226.6	508.0	520.5	372.4	353.4	546.7	307.8	March "
ግንቦት 2015	444.7	530.3	486.6	282.8	245.4	531.1	484.0	371.9	353.7	557.4	320.1	April "
ግንቦት 2015	460.0	536.3	532.0	323.5	254.2	527.1	479.2	404.2	382.8	564.7	320.4	May "

ሠንጠረዥ 7 ለገጠማዊ የምግብ የሽግግር ዋጋ መመዘኛ ኢንዱክሽን በሥሩ የተካተቱ ክፍሎች ለድሬዳዋ ከተማ አስተዳደር

ታህሳስ 2009 = 100

Table 7b: General Food Consumer Price Index and Its Components for Dire Dawa City Administration  
December 2016 = 100

ወርና ዓመት	ጠቅላላ ስርዓት											ወርና ዓመት
	ምግብና አልኮሎል ያልሆኑ መጠጦች	ዳቦና ለህል	ሥጋ	አሳና የባህር ምግቦች	ወተት አይብና ዕንቁላል	ዘይትና ቅባቶች	ፍራፍሬ	አትክልትና ጥራጥሬ	ሰኳር ማርና ቼኮሌት	ሌሎች ምግቦች	አልኮሎል ያልሆኑ መጠጦች	
Month an Year	Food and Non-Alcoholic Beverages	Bread and Cereals	Meat (ND)	Fish and Seafood	Milk, cheese and eggs (ND)	Oils and fats (ND)	Fruit (ND)	Vegetables	Sugar, jam, honey, chocolate.	Food products n.e.c. (ND)	Non-Alcoholic Beverages and coffee	Month an Year
ታህሳስ 2009	100.0	100.0	100.0	100.0	100.0	100.0	100.0	100.0	100.0	100.0	100.0	December 2016
ሐምሌ 2009 - ሰኔ 2010	113.5	112.9	114.8	123.0	115.4	104.7	132.5	113.7	105.9	129.4	114.1	July 2017 - June 2018
ሐምሌ 2009 - ሰኔ 2010	136.7	139.6	144.2	137.4	134.1	110.8	147.8	135.6	98.8	200.1	116.0	July 2018 - June 2019
ሐምሌ 2011 - ሰኔ 2012	171.8	176.3	186.0	154.4	158.7	118.9	177.6	180.4	111.0	253.9	135.0	July 2019 - June 2020
ምሌ 2012 - ሰኔ 2013	217.4	219.7	216.8	171.3	181.6	164.0	197.6	215.7	129.3	468.1	152.3	July 2020 - June 2021
ሐምሌ 2013 - ሰኔ 2014	298.5	320.4	255.0	227.0	253.4	315.0	234.8	241.3	157.3	692.7	203.1	July 2021 - June 2022
2015												2022/2023
ሐምሌ 2014	361.6	371.9	306.4	303.8	319.5	532.1	312.0	295.4	225.0	637.2	272.2	July 2022
ነሐሴ 2014	375.8	397.0	317.5	307.6	316.5	532.3	337.5	304.8	225.0	641.4	283.6	August "
መስከረም 2015	387.5	405.2	334.8	315.3	332.7	532.4	329.1	326.6	225.0	637.1	309.7	September "
ጥቅምት 2015	402.9	427.9	357.6	334.5	338.0	557.8	340.8	334.1	225.0	633.6	314.5	October "
ህዳር 2015	403.0	436.9	356.5	361.5	338.4	575.2	307.2	317.5	225.0	629.3	301.3	November "
ታህሳስ 2015	402.5	453.1	357.0	369.3	326.3	579.4	331.0	282.9	225.0	630.8	317.5	December "
ጥር 2015	410.6	461.8	357.0	369.3	344.5	579.2	359.6	301.5	225.0	618.7	315.6	January 2023
ፕቅይት 2015	418.2	487.1	357.0	369.3	345.1	579.3	393.3	292.0	225.0	597.6	322.8	February "
መጋቢት 2015	449.1	515.9	357.0	369.3	352.4	579.2	398.0	363.4	325.0	600.1	290.6	March "
ሚያዝያ 2015	466.7	545.4	361.8	376.9	355.6	579.6	401.7	375.4	325.0	627.5	307.0	April "
ግንቦት 2015	494.3	549.8	413.8	392.0	386.5	593.5	379.8	453.0	350.0	622.1	310.7	May "

ሠንጠረዥ 8 ለገቢ ጠቅላላ የምግብ የሽግግር ዋጋ መመዘኛ ኢንዱክስ በሥሩ የተካተቱ ክፍሎች ለጋምቤላ ብሔራዊ ክልላዊ መንግስት  
 ታህሳስ 2009 = 100  
 Table 8b: General Food Consumer Price Index and Its Components for Gambella National Regional State  
 December 2016 = 100

ወርና ዓመት	ጋህሳስ ስርዓት											ወርና ዓመት
	ምግብና አልኮሎል ያልሆኑ መጠጦች	ዳቦና ለህል	ሥጋ	አሳና የባህር ምግቦች	ወተት አይብና ዕንቁላል	ዘይትና ቅባቶች	ፍራፍሬ	አትክልትና ጥራጥሬ	ስኳር ማርና ጭኮሌት	ሌሎች ምግቦች	አልኮሎል ያልሆኑ መጠጦች	
Month an Year	Food and Non-Alcoholic Beverages	Bread and Cereals	Meat (ND)	Fish and Seafood	Milk, cheese and eggs (ND)	Oils and fats (ND)	Fruit (ND)	Vegetables	Sugar, jam, honey, chocolate.	Food products n.e.c. (ND)	Non-Alcoholic Beverages and coffee	Month an Year
ታህሳስ 2009	100.0	100.0	100.0	100.0	100.0	100.0	100.0	100.0	100.0	100.0	100.0	December 2016
ሐምሌ 2009 - ሰኔ 2010	112.9	127.7	118.0	101.4	97.1	110.1	89.2	99.9	99.0	135.4	103.9	July 2017 - June 2018
ሐምሌ 2009 - ሰኔ 2010	129.8	141.5	153.4	110.1	131.5	122.5	117.0	114.4	96.8	143.0	119.1	July 2018 - June 2019
ሐምሌ 2011 - ሰኔ 2012	159.4	182.2	186.2	116.3	162.8	135.6	165.1	148.7	112.9	180.5	112.1	July 2019 - June 2020
ምሌ 2012 - ሰኔ 2013	201.0	227.9	223.2	146.4	213.3	192.4	158.6	185.3	139.6	235.2	143.4	July 2020 - June 2021
ሐምሌ 2013 - ሰኔ 2014	284.4	342.6	319.7	192.2	269.3	375.3	226.6	223.9	186.1	278.9	225.7	July 2021 - June 2022
2015												2022/2023
ሐምሌ 2014	348.4	403.9	382.5	401.8	318.9	575.3	185.1	252.0	176.4	316.4	276.9	July 2022
ነሐሴ 2014	359.6	431.0	388.2	456.3	322.6	563.7	216.6	234.2	227.7	326.8	287.7	August "
መስከረም 2015	363.6	420.9	398.0	456.3	318.4	520.1	199.3	278.0	240.0	308.8	301.0	September "
ጥቅምት 2015	362.9	385.3	421.8	469.2	331.8	577.3	241.7	277.0	233.6	349.0	316.7	October "
ህዳር 2015	364.7	392.4	422.0	473.6	331.3	547.6	253.1	283.4	233.9	350.6	311.7	November "
ታህሳስ 2015	373.6	400.9	427.2	496.0	341.7	552.5	257.4	293.2	233.9	350.6	326.5	December "
ጥር 2015	367.3	402.8	424.8	496.0	351.7	540.9	256.9	281.9	233.9	330.2	283.5	January 2023
የካቲት 2015	391.0	422.3	427.2	505.9	392.8	540.5	267.1	341.5	228.0	340.4	281.3	February "
መጋቢት 2015	415.4	461.9	476.0	509.0	356.9	530.0	402.1	373.9	320.2	340.8	290.7	March "
ሚያዝያ 2015	405.1	476.1	448.7	505.9	370.1	514.7	440.9	310.6	314.6	351.2	284.2	April "
ግንቦት 2015	431.6	491.8	505.8	515.9	371.9	563.4	384.0	372.3	337.4	350.7	286.4	May "

ሠንጠረዥ 9ለI ጠቅላላ የምግብ የሽግግር ዋጋ መመዘኛ ኢንዱክስ በሥሩ የተካተቱ ክፍሎች ለሐረሪ ብሔራዊ ክልላዊ መንግስት  
 ታህሳስ 2009 = 100  
 Table 9b: General Food Consumer Price Index and Its Components for Harari National Regional State  
 December 2016 = 100

ወርና ዓመት	ጠቅላላ ስርዓት											ወርና ዓመት
	ምግብና አልኮሎል ያልሆኑ መጠጦች	ጸቦና እህል	ሥጋ	አሳና የባህር ምግቦች	ወተት አይብና ዕንቁላል	ዘይትና ቅባቶች	ፍራፍሬ	አትክልትና ጥራጥሬ	ስኳር ማርና ጅኮሌት	ሌሎች ምግቦች	አልኮሎል ያልሆኑ መጠጦች	
Month an Year	Food and Non-Alcoholic Beverages	Bread and Cereals	Meat (ND)	Fish and Seafood	Milk, cheese and eggs (ND)	Oils and fats (ND)	Fruit (ND)	Vegetables	Sugar, jam, honey, chocolate.	Food products n.e.c. (ND)	Non-Alcoholic Beverages and coffee	Month an Year
ታህሳስ 2009	100.0	100.0	100.0	100.0	100.0	100.0	100.0	100.0	100.0	100.0	100.0	December 2016
ሐምሌ 2009 - ሰኔ 2010	111.9	116.5	106.4	0.0	111.3	116.6	146.2	103.5	109.8	115.5	98.2	July 2017 - June 2018
ሐምሌ 2009 - ሰኔ 2010	128.0	135.3	127.5	0.0	136.1	114.0	140.3	120.2	110.3	132.5	100.3	July 2018 - June 2019
ሐምሌ 2011 - ሰኔ 2012	161.5	176.0	161.1	0.0	162.1	118.0	180.6	161.3	134.9	156.0	115.0	July 2019 - June 2020
ምሌ 2012 - ሰኔ 2013	197.4	223.4	190.2	0.0	189.1	119.2	204.7	197.3	148.5	212.7	131.2	July 2020 - June 2021
ሐምሌ 2013 - ሰኔ 2014	279.2	307.0	253.4	0.0	263.5	319.4	269.0	221.1	197.8	446.5	186.4	July 2021 - June 2022
2015												2022/2023
ሐምሌ 2014	334.6	362.2	301.3	0.0	362.2	410.0	397.5	274.8	255.9	320.2	266.60	July 2022
ኅሐሴ 2014	353.6	379.9	349.5	0.0	324.8	592.9	367.4	249.3	255.9	365.4	269.61	August "
መስከረም 2015	357.6	366.2	367.6	0.0	309.6	566.0	375.2	330.3	255.9	314.4	268.91	September "
ጥቅምት 2015	362.6	404.2	348.1	0.0	327.0	536.8	367.4	269.6	255.9	331.0	277.40	Ocober "
ህዳር 2015	363.9	394.4	368.9	0.0	324.8	593.7	371.3	268.0	255.9	327.7	276.50	November "
ታህሳስ 2015	359.8	403.1	353.9	0.0	321.9	537.3	376.8	249.8	255.9	327.7	290.45	December "
ጥር 2015	371.2	414.0	388.3	0.0	340.1	538.3	399.5	247.6	255.9	348.9	294.31	January 2023
የካቲት 2015	384.0	443.6	382.0	0.0	322.6	538.0	441.5	261.5	255.9	323.8	313.52	February "
መጋቢት 2015	388.9	446.2	387.6	0.0	324.8	456.3	544.6	289.7	350.5	356.7	286.44	March "
ግንቦት 2015	400.5	448.7	419.7	0.0	324.8	538.3	426.3	298.1	445.1	334.0	277.71	April "
ግንቦት 2015	441.3	463.0	486.7	0.0	330.0	539.0	421.9	470.3	361.6	351.2	284.97	May "



ሠንጠረዥ 10 ለጠቅላላ የምግብ የሽግግር ዋጋ መመዘኛ ኢንዱክሽን በሥራ የተካተቱ ክፍሎች ለኦሮሚያ ብሔራዊ ክልላዊ መንግስት  
 ታህሳስ 2009 = 100  
 Table 10b: General Food Consumer Price Index and Its Components for Oromia National Regional State  
 December 2016 = 100

ወርና ዓመት	ጸሀዕው ስርዓት											ወርና ዓመት
	ምግብና አልኮሎል ያልሆኑ መጠጦች	ዳቦና ለህል	ሥጋ	አሳና የባህር ምግቦች	ወተት አይብና ዕንቁላል	ዘይትና ቅባቶች	ፍራፍሬ	አትክልትና ጥራጥሬ	ስኳር ማርና ጅኮሌት	ሌሎች ምግቦች	አልኮሎል ያልሆኑ መጠጦች	
Month an Year	Food and Non-Alcoholic Beverages	Bread and Cereals	Meat (ND)	Fish and Seafood	Milk, cheese and eggs (ND)	Oils and fats (ND)	Fruit (ND)	Vegetables	Sugar, jam, honey, chocolate.	Food products n.e.c. (ND)	Non-Alcoholic Beverages and coffee	Month an Year
ታህሳስ 2009	100.0	100.0	100.0	0.0	100.0	100.0	100.0	100.0	100.0	100.0	100.0	December 2016
ሐምሌ 2009 - ሰኔ 2010	116.5	127.3	115.5	0.0	119.1	86.9	135.8	117.9	82.3	134.0	102.8	July 2017 - June 2018
ሐምሌ 2009 - ሰኔ 2010	129.8	141.9	134.9	0.0	142.5	86.1	153.2	137.7	79.6	148.6	107.2	July 2018 - June 2019
ሐምሌ 2011 - ሰኔ 2012	160.8	185.6	164.4	0.0	156.7	93.4	186.7	185.2	86.8	166.9	119.0	July 2019 - June 2020
ምሌ 2012 - ሰኔ 2013	199.1	235.1	185.0	0.0	185.9	126.0	190.0	219.2	95.7	212.0	154.6	July 2020 - June 2021
ሐምሌ 2013 - ሰኔ 2014	285.8	341.5	254.0	0.0	251.0	250.2	246.0	265.5	132.7	300.3	257.7	July 2021 - June 2022
2015												2022/2023
ሐምሌ 2014	344.4	396.6	316.7	0.0	325.3	377.1	312.1	295.7	157.6	324.3	340.0	July 2022
ነሐሴ 2014	357.2	414.3	338.0	0.0	317.7	373.5	324.8	312.8	161.6	330.2	361.0	August "
መስከረም 2015	364.6	411.2	340.9	0.0	319.7	399.1	349.7	326.4	186.1	332.2	374.5	September "
ጥቅምት 2015	360.7	418.6	347.3	0.0	315.1	356.5	384.8	316.2	175.5	331.0	379.9	October "
ህዳር 2015	367.4	421.4	353.1	0.0	326.2	372.7	379.2	324.4	195.2	338.4	381.5	November "
ታህሳስ 2015	363.8	422.7	355.7	0.0	329.6	377.5	388.4	312.2	189.4	335.3	365.7	December "
ጥር 2015	365.2	424.4	360.7	0.0	339.3	374.3	386.9	321.3	184.9	337.9	350.1	January 2023
የካቲት 2015	369.0	431.2	367.0	0.0	348.7	374.1	381.4	334.6	201.6	336.7	329.9	February "
መጋቢት 2015	398.1	477.2	368.1	0.0	348.1	382.4	395.8	395.7	237.8	339.5	321.4	March "
ሚያዝያ 2015	405.9	490.2	390.5	0.0	360.2	339.1	393.3	401.7	245.3	361.8	343.7	April "
ግንቦት 2015	414.2	506.7	397.3	0.0	362.9	358.4	404.5	404.3	262.5	351.4	347.3	May "

ሠንጠረዥ 11 ለጠቅላላ የምግብ የሽግግር ዋጋ መመዘኛ ኢንዱክሽን በሥሩ የተካተቱ ክፍሎች ለደቡብ ብሔራዊ ክልላዊ መንግስት  
 ታህሳስ 2009 = 100

Table 11b: General Food Consumer Price Index and Its Components for SNNP National Regional State  
 December 2016 = 100

ወርና ዓመት	ጠቅላላ ስጦታዎች											ወርና ዓመት
	ምግብና አልኮሎል ያልሆኑ መጠጦች	ጸቦና ለህል	ሥጋ	ሰጠና የባህር ምግቦች	ወተት አይብና ዕንቁላል	ዘይትና ቅባቶች	ፍራፍሬ	አትክልትና ጥራጥሬ	ሰኳር ማርና ጅኮሌት	ሌሎች ምግቦች	አልኮሎል ያልሆኑ መጠጦች	
Month an Year	Food and Non-Alcoholic Beverages	Bread and Cereals	Meat (ND)	Fish and Seafood	Milk, cheese and eggs (ND)	Oils and fats (ND)	Fruit (ND)	Vegetables	Sugar, jam, honey, chocolate.	Food products n.e.c. (ND)	Non-Alcoholic Beverages and coffee	Month an Year
ታህሳስ 2009	100.0	100.0	100.0	0.0	100.0	100.0	100.0	100.0	100.0	100.0	100.0	December 2016
ሐምሌ 2009 - ሰኔ 2010	120.5	128.4	121.2	0.0	118.8	113.2	131.8	117.9	102.9	119.1	116.3	July 2017 - June 2018
ሐምሌ 2009 - ሰኔ 2010	132.1	140.3	143.7	0.0	136.8	120.3	147.6	137.0	103.0	131.9	122.3	July 2018 - June 2019
ሐምሌ 2011 - ሰኔ 2012	164.5	172.6	180.8	0.0	161.5	137.5	196.7	166.0	122.2	143.4	144.6	July 2019 - June 2020
ምሌ 2012 - ሰኔ 2013	214.2	230.5	210.6	0.0	193.2	175.5	205.8	201.8	141.6	219.1	185.8	July 2020 - June 2021
ሐምሌ 2013 - ሰኔ 2014	310.4	357.3	283.8	0.0	274.4	309.3	291.1	279.5	188.6	352.0	311.0	July 2021 - June 2022
2015												2022/2023
ሰኔ 2014	372.4	429.3	360.7	0.0	322.5	423.0	315.5	318.6	246.6	362.1	403.9	July 2022
ኅሐሴ 2014	382.2	428.3	369.5	0.0	319.0	443.1	395.0	329.7	251.3	359.6	434.5	August "
መስከረም 2015	386.4	435.2	369.5	0.0	335.1	464.3	366.7	340.4	256.8	369.9	459.6	September "
ጥቅምት 2015	393.6	434.7	375.9	0.0	329.1	458.2	392.2	351.1	263.9	358.7	460.0	October "
ህዳር 2015	398.1	437.5	380.2	0.0	344.1	473.3	395.8	343.7	262.9	364.9	435.0	November "
ታህሳስ 2015	392.8	440.8	384.5	0.0	362.7	471.6	422.7	341.8	298.1	377.5	393.5	December "
ጥር 2015	393.7	452.2	396.9	0.0	376.1	444.9	415.8	368.6	336.0	376.1	438.4	January 2023
የካቲት 2015	407.7	468.3	392.7	0.0	377.9	446.5	424.7	383.8	359.0	381.9	440.7	February "
መጋቢት 2015	433.3	492.0	396.6	0.0	385.7	432.8	482.2	456.8	390.6	375.4	473.2	March "
ሚያዝያ 2015	446.3	507.2	420.5	0.0	412.8	466.5	500.5	417.3	376.7	383.6	442.8	April "
ግንቦት 2015	446.4	518.0	423.4	0.0	415.7	433.7	455.9	406.1	385.7	384.8	379.1	May "

ሠንጠረዥ 12 ለጠቅላላ የምግብ የሽግግር ዋጋ መመዘኛ ኢንዱክሽን በሥሩ የተካተቱ ክፍሎች ለሱግሌ ብሔራዊ ክልላዊ መንግስት  
 ታህሳስ 2009 = 100

Table 12b: General Food Consumer Price Index and Its Components for Somali National Regional State  
 December 2016 = 100

ወርና ዓመት	ጸሀሳዎች ስርዓቶች											ወርና ዓመት
	ምግብና አልኮሎል ያልሆኑ መጠጦች	ዳቦና ለህል	ሥጋ	አሳና የባህር ምግቦች	ወተት አይብና ዕንቁላል	ዘይትና ቅባቶች	ፍራፍሬ	አትክልትና ጥራጥሬ	ሰኳር ማርና ጅኮሌት	ሌሎች ምግቦች	አልኮሎል ያልሆኑ መጠጦች	
Month an Year	Food and Non-Alcoholic Beverages	Bread and Cereals	Meat (ND)	Fish and Seafood	Milk, cheese and eggs (ND)	Oils and fats (ND)	Fruit (ND)	Vegetables	Sugar, jam, honey, chocolate.	Food products n.e.c. (ND)	Non-Alcoholic Beverages and coffee	Month an Year
ታህሳስ 2009	100.0	100.0	100.0	0.0	100.0	100.0	100.0	100.0	100.0	100.0	100.0	December 2016
ሐምሌ 2009 - ሰኔ 2010	113.7	119.3	118.1	0.0	99.7	100.3	118.3	136.5	105.3	139.3	103.2	July 2017 - June 2018
ሐምሌ 2009 - ሰኔ 2010	132.5	140.2	128.3	0.0	116.1	107.0	123.7	139.4	134.5	164.8	112.2	July 2018 - June 2019
ሐምሌ 2011 - ሰኔ 2012	159.4	179.4	165.4	0.0	134.6	124.7	145.3	196.3	126.4	205.3	129.2	July 2019 - June 2020
ምሌ 2012 - ሰኔ 2013	181.0	206.7	186.2	0.0	180.1	137.9	147.5	233.7	116.6	197.8	134.0	July 2020 - June 2021
ሐምሌ 2013 - ሰኔ 2014	260.3	332.4	243.8	0.0	243.9	187.9	179.0	305.8	116.6	259.1	176.4	July 2021 - June 2022
2015												2022/2023
ሐምሌ 2014	332.9	405.0	299.2	0.0	440.8	197.9	225.2	363.5	116.6	310.3	223.7	July 2022
ነሐሴ 2014	326.2	420.0	338.0	0.0	348.5	197.9	229.3	373.9	116.6	313.6	197.3	August "
መስከረም 2015	340.2	431.1	346.3	0.0	371.9	197.9	254.9	437.8	116.6	300.1	248.3	September "
ጥቅምት 2015	348.1	453.6	344.5	0.0	372.9	197.9	267.1	391.2	116.6	313.7	256.8	October "
ህዳር 2015	355.6	460.7	303.6	0.0	408.2	197.9	294.0	373.4	116.6	326.0	278.5	November "
ታህሳስ 2015	353.9	464.6	323.7	0.0	402.1	197.9	284.4	343.0	116.6	317.6	248.7	December "
ጥር 2015	360.6	461.1	345.2	0.0	434.3	197.9	289.4	360.4	116.6	319.3	300.4	January 2023
የካቲት 2015	360.0	468.0	345.3	0.0	406.4	197.9	309.3	364.5	116.6	323.1	306.4	February "
መጋቢት 2015	368.4	470.7	353.0	0.0	430.9	197.9	313.4	412.7	116.6	336.4	293.9	March "
ሚያዝያ 2015	370.0	494.5	387.0	0.0	381.5	162.9	332.0	408.4	116.6	339.1	310.8	April "
ግንቦት 2015	380.9	501.7	372.2	0.0	406.8	162.9	318.7	469.4	116.6	347.7	309.4	May "

ሠንጠረዥ 13 ለጠቅላላ የምግብ የሽግግር ዋጋ መመዘኛ ኢንዱክስ በሥሩ የተካተቱ ክፍሎች ለትግራይ ብሔራዊ አዳዲስ መንግስት  
 ታህሳስ 2009 = 100

Table 13b: General Food Consumer Price Index and Its Components for Tigray National Regional State  
 December 2016 = 100

ወርና ዓመት	ጠቅላላ ግብዓት											ወርና ዓመት
	ምግብና አልኮሎሊክ ያልሆኑ መጠጦች	ዳቦና እህል	ሥጋ	አሳና የባህር ምግቦች	ወተት አይብና ዕንቁላል	ዘይትና ቅባቶች	ፍራፍሬ	አትክልትና ጥራጥሬ	ሰኳር ማርና ጅኮሌት	ሌሎች ምግቦች	አልኮሎሊክ ያልሆኑ መጠጦች	
Month an Year	Food and Non-Alcoholic Beverages	Bread and Cereals	Meat (ND)	Fish and Seafood	Milk, cheese and eggs (ND)	Oils and fats (ND)	Fruit (ND)	Vegetables	Sugar, jam, honey, chocolate.	Food products n.e.c. (ND)	Non-Alcoholic Beverages and coffee	Month an Year
<b>ታህሳስ 2009</b>	<b>100.0</b>	<b>100.0</b>	<b>100.0</b>	<b>0.0</b>	<b>100.0</b>	<b>100.0</b>	<b>100.0</b>	<b>100.0</b>	<b>100.0</b>	<b>100.0</b>	<b>100.0</b>	<b>December 2016</b>
<b>ሐምሌ 2009 - ሰኔ 2010</b>	<b>118.0</b>	<b>126.4</b>	<b>128.0</b>	<b>0.0</b>	<b>119.0</b>	<b>103.6</b>	<b>108.9</b>	<b>107.8</b>	<b>95.9</b>	<b>113.0</b>	<b>106.4</b>	<b>July 2017 - June 2018</b>
<b>ሐምሌ 2009 - ሰኔ 2010</b>	<b>145.4</b>	<b>168.4</b>	<b>155.2</b>	<b>0.0</b>	<b>145.7</b>	<b>106.3</b>	<b>139.6</b>	<b>122.3</b>	<b>95.2</b>	<b>148.0</b>	<b>111.9</b>	<b>July 2018 - June 2019</b>
<b>ሐምሌ 2011 - ሰኔ 2012</b>	<b>183.4</b>	<b>210.0</b>	<b>201.5</b>	<b>0.0</b>	<b>183.4</b>	<b>131.5</b>	<b>155.9</b>	<b>175.0</b>	<b>104.8</b>	<b>166.6</b>	<b>130.8</b>	<b>July 2019 - June 2020</b>
<b>ምሌ 2012 - ሰኔ 2013</b>	<b>236.4</b>	<b>263.9</b>	<b>227.4</b>	<b>0.0</b>	<b>207.6</b>	<b>214.1</b>	<b>155.1</b>	<b>235.6</b>	<b>130.2</b>	<b>268.8</b>	<b>152.1</b>	<b>July 2020 - June 2021</b>
<b>ሐምሌ 2013 - ሰኔ 2014</b>	<b>239.2</b>	<b>265.5</b>	<b>228.2</b>	<b>0.0</b>	<b>210.2</b>	<b>238.4</b>	<b>158.4</b>	<b>236.1</b>	<b>137.8</b>	<b>272.2</b>	<b>152.7</b>	<b>July 2021 - June 2022</b>