



ETHIOPIAN STATISTICAL SERVICE

Statistical Bulletin

MONTHLY NEWS RELEASE

INFLATION REPORT ON DECEMBER, EFY 2016

Issue No. 06/2016

December EFY2016

Content

- Summary
- Year-on-Year General, Food & Non-food Inflation
- Month-on-Month General, Food & Non-food Inflation
- 12-Month Moving Average General, Food and Non-food Inflation
- Annual Inflation trend
- Glossary

1. Summary

The Consumer Price Index (CPI), a key economic statistics, is surveyed, analyzed, and made available to data users on a monthly basis.

*The year-on-year, general inflation rate (annual percentage change) in the country stood at **28.7 percent** for the month of **December EFY2016**. A year earlier (in December EFY2015), the rate was **33.8 percent**.*

*The month-on-month general inflation rate stood at **0.7 percent** for the month of **December -EFY2016**. It was **0.4 percent** in **December EFY2015**.*

*General inflation encompasses of two main divisions and twenty-one groups of expenditures. These divisions registered the following price changes during the month of **December EFY2016** compared with **December EFY2015**.*

2. Food & Non-alcoholic Beverages and Non-Food Inflation (Year-on-Year)

The year-on-year inflation and the month-to-month inflation rates helps to gauge the current inflation trajectory, as they capture short-term fluctuations in prices and provides an immediate indicator of inflationary pressures. Particularly, the month-to-month is also crucial for monitoring changes in consumer prices and identifying any sudden spikes or declines in inflation.

Food & Non-alcoholic Beverages index

The **year-on-year inflation rate**, also known as the annual inflation rate, measures the percentage change in overall price levels from one year to the same month in the previous year. Accordingly, the year-on-year inflation rate of the Food and Non-alcoholic component of the CPI, for the month of December 2016 EFY, stood at **30.6%**. This implies that the CPI of Food and Non-Alcoholic Beverages has, on average, increased by **30.6%** compared to December EFY2015. The major contributing factors for the rise of food inflation for December EFY2016 was the observed increase in the average prices of major food commodities such as bread and cereals (**42.6%**), vegetables (**55.1%**), meat (**29.1%**), Sugar, jam, honey & chocolate (**34.2%**), fruit (**16.4%**), Milk, Cheese and Eggs (**20.7%**) and Food products n.e.c (**8.4%**).

Tele: +251 111 573296
+251 111 564226
+251 111 115131
Fax: +251 111 115470

YOUR RELIABLE DATA SOURCE
ተቃማኒ የመረጃ ምንጭ

Website: www.statsethiopia.gov.et
P.O.Box: 1143



ETHIOPIAN STATISTICAL SERVICE

Statistical Bulletin

Issue No. 06/2016

Page 2

Notably, for the last nine months except October and December, the inflation rate mostly showed reduction. Reduced from **34.2** percent in March EFY2015 to **33.5** Percent in April, **30.8** percent in May, **29.3** percent in June, **28.8** percent in July EFY2016, **28.2** percent in August EFY2016, **28.3** Percent in September EFY2016, and **28.3** Percent in November EFY2016. The price increase in October and December months attached to the fact that these months are overlaps with new year, school starting period, and Christmas celebrations.

Table 1: General, Food and Non-Food Inflation Rate (% , Year-on-Year) December EFY2015 - December EFY2016

Month/Year	General	Food	Non-Food
December EFY2009=100	100.0	100.0	100.0
July EFY2009 - June EFY2010	14.4	13.4	15.9
July EFY 2010 - June EFY2011	12.6	13.1	11.9
July EFY2011 - June EFY2012	19.9	23.3	15.9
July EFY2012 - June EFY2013	20.2	23.2	16.4
July EFY2013 - June EFY2014	33.8	40.3	25.2
July EFY2015 - June EFY2015	32.5	31.7	33.9
December-EFY 2015	33.8	32.9	35.2
January	33.9	33.6	34.5
February	32.0	29.6	35.7
March	34.2	32.8	36.3
April	33.5	31.8	36.1
May	30.8	28.5	34.4
June	29.3	28.0	31.4
July	28.8	27.3	31.1
August	28.2	26.5	30.7
September	28.3	27.1	30.0
October	29.2	29.7	28.5
November	28.3	30.0	26.0
December-EFY 2016	28.7	30.6	26.1

Base year: December, EFY2009= 100

Tele: +251 111 573296
+251 111 564226
+251 111 115131
Fax: +251 111 115470

YOUR RELIABLE DATA SOURCE
ተባማኒ የመረጃ ምንጭ

Website: www.statsethiopia.gov.et
P.O.Box: 1143



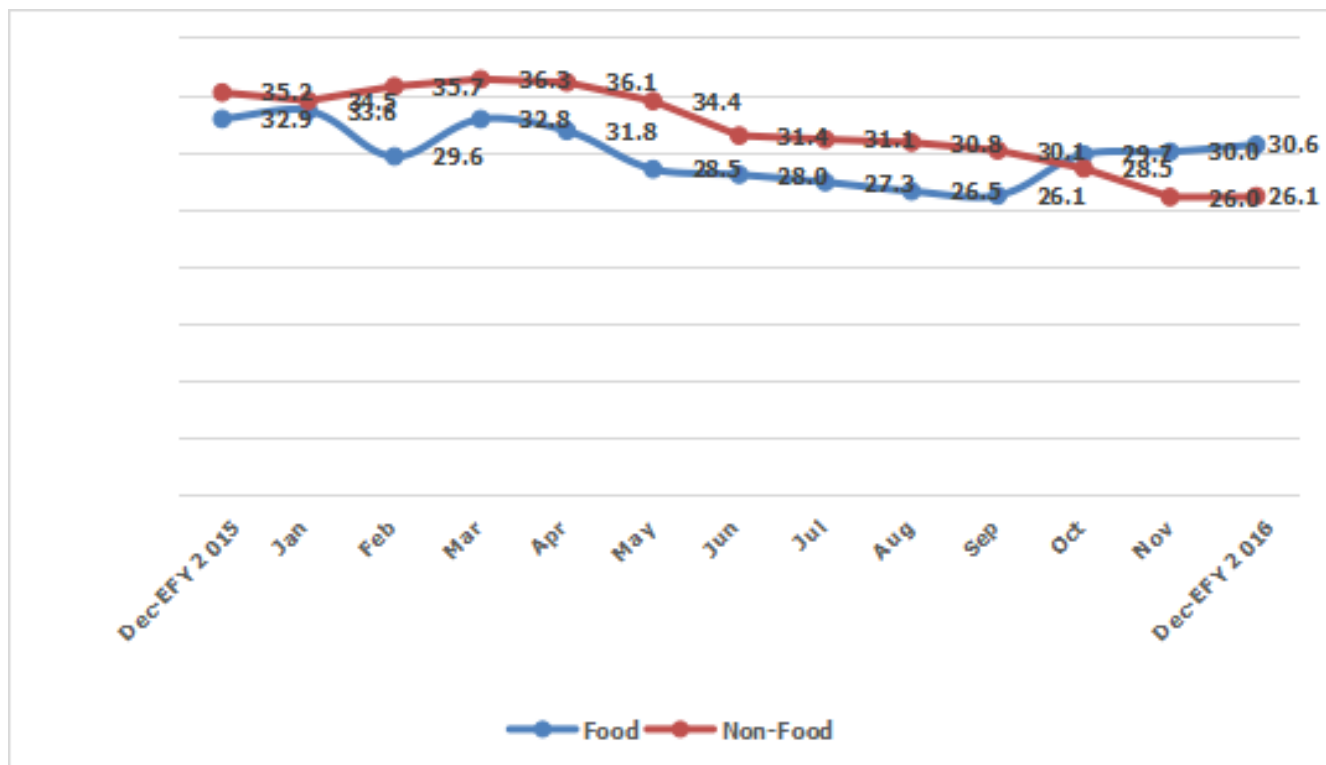
ETHIOPIAN STATISTICAL SERVICE

Statistical Bulletin

Issue No. 06/2016

Page 3

Fig 1: Food and Non-Food Inflation (% , Year-on-Year), December EFY2015 - December EFY2016



Non-Food Inflation and Alcoholic Beverages (Year-on-Year)

As can be seen from the above figure, both the food and the non-food year-on-year inflation have continued to be stubbornly high. Similarly, a more pronounced price increment in the major **Non-food components** of the CPI was observed. The Non-Food inflation increased by **26.1 percent** in the same period. Particularly, Alcoholic Beverages and Tobacco (**23.6%**); Housing, water, electricity & other fuel component (**32.1%**); Furnishings, household equipment & routine maintenance of the House (**21.3%**); Clothing and footwear (**18.6%**); Health (**45.4 %**); Education (**32.7 %**); Transport (**24.6**), Communication (**33.4**), Restaurants and hotels (**25.8%**) and Miscellaneous goods and services (**19.6 %**) have contributed for the rise in non-food inflation rate in December EFY2016.



ETHIOPIAN STATISTICAL SERVICE

Statistical Bulletin

Issue No. 06/2016

Page 4

Major sub divisions in the food and non-food commodities (year-on-Year).

When we look at major division of food and non-food commodities, which holds large share in the commodity basket, the inflation rate at December EFY2016 stood high. From Food and Non-Alcoholic Beverage aspect, the highest weight is hold by Bread and Cereals, Vegetables, Other-Food products, Non-Alcoholic Beverage, and Meat; whose inflation at December EFY2016 is recorded Bread & Cereals **(42.6%)**; Vegetables **(55.1%)**; Other-Food products (Food products not elsewhere classified) **(8.4%)**; and Meat **(29.1%)** increase and Non-Alcoholic Beverages & coffee declined **(-1.3%)**.

Similarly, during December 2016 EFY the year-on-year inflation rate of the major Non- Food items of Housing, Water, Electricity, Gas, & Other Fuels **(32.1%)**; clothing and footwear **(18.6%)**; Restaurants and Hotels (25.8%); Alcoholic Beverages & Tobacco **(23.6%)**; and Furnishings, Household Equipment & Routine Household Maintenance of the House **(21.3%)** have contributed for the rise in non-food inflation rate in December EFY2016.

Table 2. Major sub divisions in the food and non-food commodities (year-on-Year).

CPI Items	Items Wight in CPI (%)	% change on Year-on-Year Inflation December EFY2015 compared with December EFY2016	% change in Month-to-Month inflation December EFY2016 compared to November EFY2016
Major Food and Non-Alcoholic Beverage components	53.5	30.6	0.0
Bread and Cereals	17.1	42.6	0.0
Vegetables	12.3	55.1	1.7
Other-Food products	5.6	8.4	0.8
Non-Alcoholic Beverage	5.1	-1.3	-4.6
Meat	4.1	29.1	0.7
Major Non-Food Components	46.5	26.1	1.8
Housing, Water, Electricity, Gas and Other Fuels	16.8	32.1	1.7
Clothing and Footwear	5.7	18.6	0.8
Restaurants and Hotels	5.3	25.8	3.6
Alcoholic Beverages and Tobacco	4.9	23.6	2.0
Furnishings, Household Equipment and Routine Maintenance of the House	4.7	21.3	-0.1

Tele: +251 111 573296
+251 111 564226
+251 111 115131
Fax: +251 111 115470

YOUR RELIABLE DATA SOURCE
ተባማኒ የመረጃ ምንጭ

Website: www.statsethiopia.gov.et
P.O.Box: 1143



ETHIOPIAN STATISTICAL SERVICE

Statistical Bulletin

Issue No. 06/2016

Page 5

Month-to-Month Inflation Rate

The **month-to-month general inflation rate** for **December EFY2016** has increased by **0.7 percent** compared to what was in **November EFY2016**. During the same month, the **food and non-alcoholic** component of the inflation has remained the same whereas the **non-food** component for its part increased by **1.8 percent**.

Table 3: General Inflation Rate (% , Month-to-Month), December EFY2015 - December

Month	General month-to-month inflation
December-EFY 2015	0.4
January	1.3
February	1.9
March	5.7
April	1.6
May	0.6
June	3.3
July	2.6
August	2.4
September	2.1
October	2.1
November	1.2
December-EFY 2016	0.7

Month-to-Month Inflation of Food and Non-Food categories: In December EFY2016, among the food components of the CPI, Vegetables experienced the most significant increase on a month-to-month basis; showed a substantial jump of **1.7 percent** followed by increases in the prices of Fish and Sea Food **1.1 percent**, Food products n.e.c **0.8 percent** and Sugar, Jam, honey and Chocolate **0.5 percent** . Similarly, the prices of meat saw a significant increase of **0.7 percent**. These notable price movements underscore the impact on consumers and highlight the challenges faced in the food sector during the month. Bread and Cereals remained constant (**0.0 Percent**). However, decline was observed in the indices of Fruit (**0.4 percent**), Oil and Fats by (**0.2%**), Milk, cheese, & eggs (**2.9%**) and Non-alcoholic beverages and coffee (**4.6%**).



ETHIOPIAN STATISTICAL SERVICE

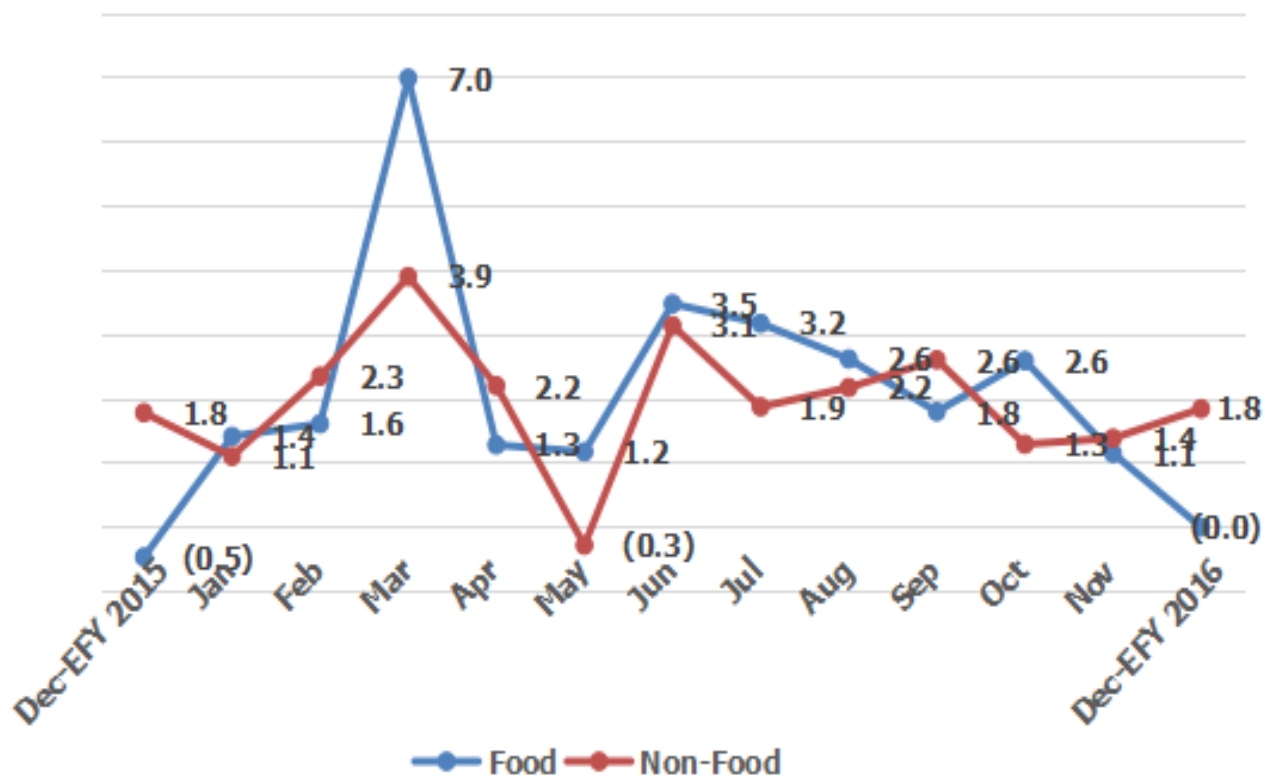
Statistical Bulletin

Issue No. 06/2016

Page 6

On the other hand, looking at non-food items, the increase in month-to-month comparison was observed in Restaurants and Hotels (3.6%), Transport (4.4 %), Health (4.4 %), Alcoholic Beverages and Tobacco(2.0 %), Education (3.4)%, Communication (0.5)%, Housing, Water, Electricity, Gas and Other Fuels (1.7%) Clothing and Footwear (0.8%) and Miscellaneous Goods and Services (1.5 %). Furniture, Household equipment and routine maintenance of the house declined by (0.1 %).

Fig 2: Food and Non-Food Inflation (% , Month-to-Month), December EFY2015 - December EFY2016





ETHIOPIAN STATISTICAL SERVICE

Statistical Bulletin

Page 7

3: 12-Month Moving Average General, Food and Non-food Inflation

The 12-month moving average figures provides a broader perspective on inflation trends over a longer period. As it is indicated in Table below the country level overall inflation rate (annual change based on **12 months Moving Average**) rose by **30.2 percent** in December EFY2016 as compared to the one observed in a similar period a year ago. Since March inflation has been relatively eased in the country.

Table 4. Overall CPI and 12-month moving average Overall Inflation rate December EEFY2016

Month	12 Months moving Average Overall CPI	12-Month Moving Average over-all Inflation
December-EFY 2015	294.0	33.9
January	301.1	33.9
February	307.9	33.7
March	315.6	33.7
April	323.2	33.5
May	330.4	33.0
June	337.6	32.5
July	344.8	32.1
August	352.1	31.7
September	359.6	31.4
October	367.3	31.2
November	375.0	30.6
December-EFY2016	382.9	30.2



ETHIOPIAN STATISTICAL SERVICE

Statistical Bulletin

Issue No. 06/2016

Page 8

12-month moving average Food and Non-Food Inflation rate (December EFY2015 - December EFY2016)

Dis-aggregated, **12-month moving average food** inflation increased by **29.4 percent** as compared to the one observed a year ago and non-food inflation rate increased by **31.4 percent** in December EFY2016 as compared to the one observed in December EFY2015.

Table 5: 12-month moving average Food and Non-Food Inflation rate (December EFY2015 - December

Month	12-month moving average Food Inflation	12-month moving average Non-Food Inflation
December EFY 2015	36.8	29.8
January	36.2	30.4
February	35.2	31.5
March	34.5	32.5
April	33.7	33.2
May	32.5	33.7
June	31.7	33.9
July	31.0	33.9
August	30.4	33.7
September	30.0	33.6
October	29.8	33.2
November	29.5	32.2
December-EFY2016	29.4	31.4

Tele: +251 111 573296
+251 111 564226
+251 111 115131
Fax: +251 111 115470

YOUR RELIABLE DATA SOURCE
ተባማኒ የመረጃ ምንጭ

Website: www.statsethiopia.gov.et
P.O.Box: 1143



ETHIOPIAN STATISTICAL SERVICE

Statistical Bulletin

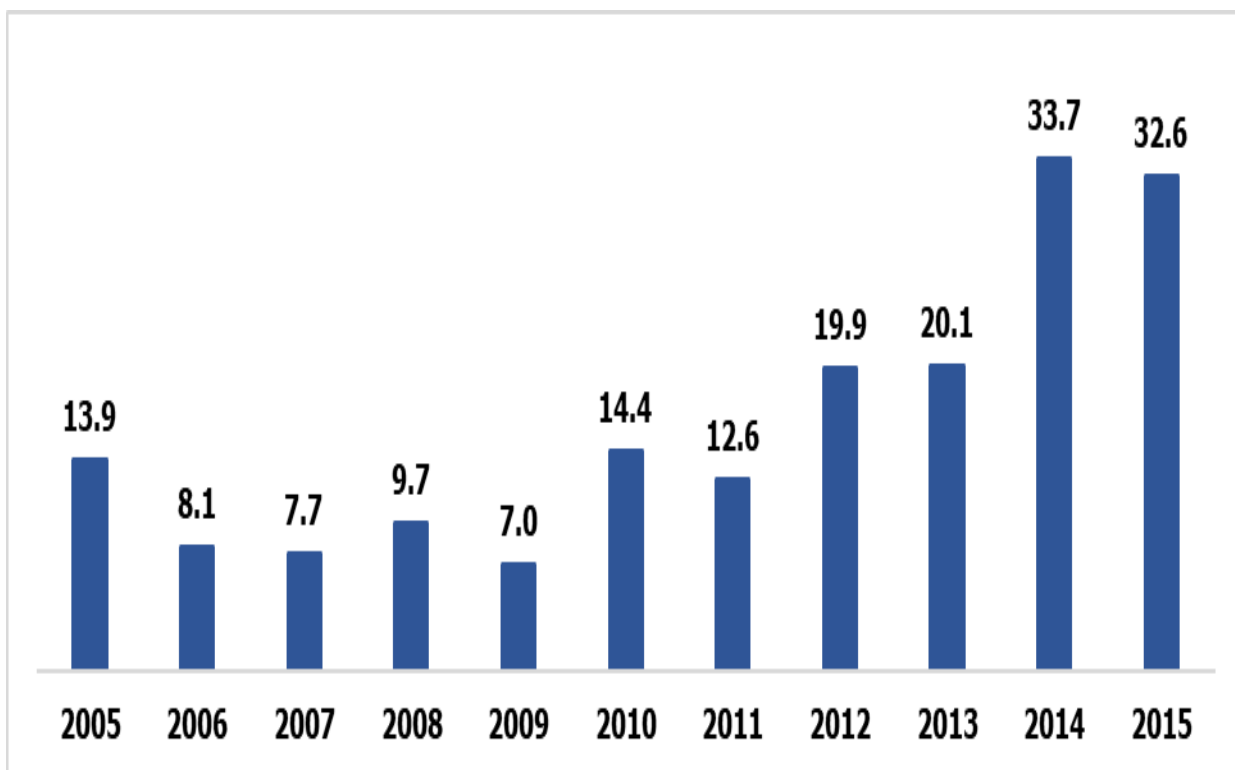
Issue No. 06/2016

Page 9

4. Annual Inflation trend

Relatively low and reduction in inflation rate was observed between 2005 and 2009. Since EFY2010 inflation rate stick to double digit.

Fig 3: Average Annual General inflation in Ethiopia at the end of EFY2015 (Year-on-Year)



The **average annual general inflation rate** for the country stood at **(32.6 %)** in EFY2015 compared to **(33.7 %)** in EFY2014. The past four years are unfavorable for the households, due to high inflation in the country. Specially, in the year EFY2014 and EFY2015, the inflation rate has been over **30 percent** for most months. Internal and external factors forced the inflation to be at higher level; COVID19, internal conflict, and Russia-Ukraine War were the major factors.



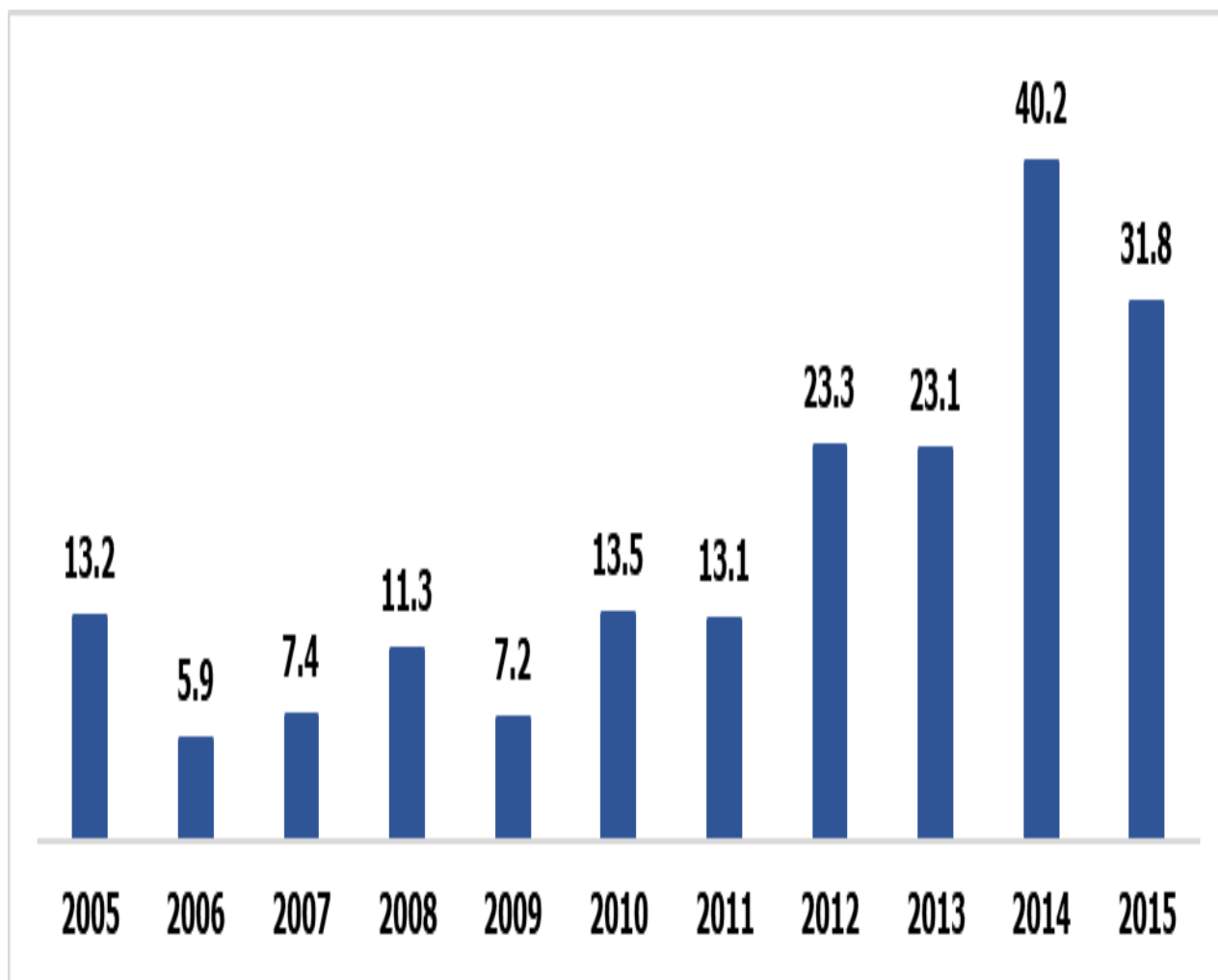
ETHIOPIAN STATISTICAL SERVICE

Statistical Bulletin

Issue No. 06/2016

Page 10

Fig 4: Average Annual Food Inflation in Ethiopia at the end of EFY2015 (Year-on-Year)



The **average annual food inflation** rate for the country stood at **(31.8 %)** in EFY2015 compared to **(40.2 %)** in EFY2014, about eight percentage point reduction compared to last year figure. But since 2010 the inflation rate stacked at double digit.



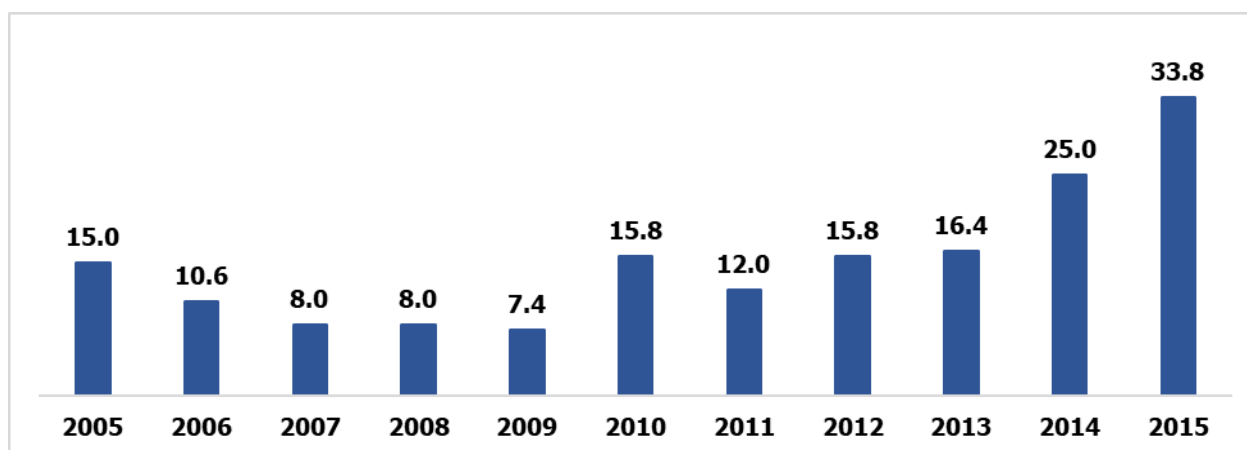
ETHIOPIAN STATISTICAL SERVICE

Statistical Bulletin

Issue No. 06/2016

Page 11

Fig 5: Average Annual Non-Food Inflation in Ethiopia at the end of EFY2015 (Year-on-Year)



The average annual non-food inflation rate for the country stood at **(33.8 %)** in **EFY2015** compared to **(25.0 %)** in **EFY2014**. Non-food inflation movement, the past ten year divided into two. Between 2005 and 2009 non-food inflation showed reduction and since then the rate demonstrate increasing trend. This is may be attached to Birr devaluation against USD, Russia-Ukraine War, and increase of international price of gasoline, as most of non-food items are imported or utilize imported raw materials whose price can be affected by exchange rate, Russia-Ukraine War, and increase of international price.



ETHIOPIAN STATISTICAL SERVICE

Statistical Bulletin

Issue No. 06/2016

Page 12

Enquiries

Telephone number
+251 111 568458

Email: alemteferig@gmail.com

Postal address : 1143

You can visit us on the Website at:

<http://www.statsethiopia.gov.et/>

5. GLOSSARY

- **General Inflation:** The highest level of aggregation of inflation which covers all the items within the scope of the inflation.
- **Food Inflation:** inflation which covers all food items within the scope of the inflation.
- **Non-food Inflation:** inflation which covers all non-food items within the scope of the inflation.
- **Year-on-Year percentage change:** The Yearly percentage change is the change in the index of the relevant month of the current year compared with the index of the same month in the previous year expressed as a percentage.
- **Month-to-Month percentage change:** The monthly percentage change is the change in the index of the relevant month compared with the index of the previous month expressed as a percentage.
- **Index reference period (December EFY2009=100):** The period with which all other periods are compared (the period for which the value of the CPI is set at 100).

Tele: +251 111 573296
+251 111 564226
+251 111 115131
Fax: +251 111 115470

YOUR RELIABLE DATA SOURCE
ተባማኒ የመረጃ ምንጭ

Website: www.statsethiopia.gov.et
P.O.Box: 1143