

በኢትዮጵያ ፌዴራላዊ ዲሞክራሲያዊ ሪፐብሊክ

በብሔራዊ ልማትና ፕላን ኮሚሽን

የማዕከላዊ ስታቲስቲክስ ኤጀንሲ



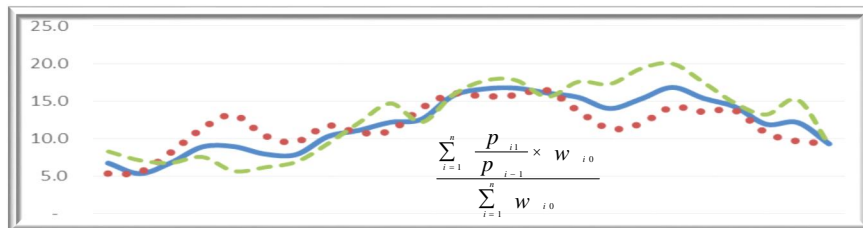
THE FEDERAL DEMOCRATIC REPUBLIC OF ETHIOPIA
NATIONAL DEVELOPMENT AND PLANNING COMMISSION
CENTRAL STATISTICAL AGENCY

የአገር አቀፍና የክልሎች የGDP ችግር ዋጋ መመዘኛ ኢንዱክሶች
የመስከረም ወር 2012 ዓ.ም.

[ታህሳስ 2009= 100]

መረጃ ቁጥር 10

COUNTRY AND REGIONAL LEVEL CONSUMER PRICE INDICES (CPI)



[December 2016=100]

For the month of September 2019

Information No. 10

አዲስ አበባ

መስከረም 26 ነ 2012 ፡.ሀ.

ADDIS ABABA

07 October 2019

Tel: 251-11-1 553011

Fax: 251-11-1550334.

Web-site: www.csa.gov.et

መግቢያ 1

የዋጋ ዋጋ ግሽበት ሁኔታ 8

ሠንጠረዥ ሐ: በአገር አቀፍ ደረጃ የ12 ወር ተንከባላይ አማካይ የዋጋ ግሽበት ሁኔታ ..10

ሠንጠረዥ መ: የዘንድሮውና የአምናው ተመሳሳይ ወሮች የሽማግሌት ዋጋ መመዘኛ
 ኢንዱስትሪ ለውጥ ንፅፅር በአገር አቀፍ ደረጃ ማጠቃለያ 11

ሠንጠረዥ ሠ: የአሁኑና ያለፈው ወር የሽማግሌት ዋጋ መመዘኛ ኢንዱስትሪ ንጽጽር
 በአገር አቀፍ ደረጃ ማጠቃለያ 13

የሠንጠረዦች ዝርዝር

ሠንጠረዥ ሀ: በጥናቱ የተሸፈኑ ገበያዎችና በኢንዱስትሪ ማዕቀፍ የተካተቱ ዕቃዎችና
 በዕቃዎች/አገልግሎቶች ብዛት በክልል 3

ሠንጠረዥ 1ሀ: ጠቅላላ የሽማግሌት ዋጋ መመዘኛ ኢንዱስትሪና በስሩ የተካተቱ ክፍሎች
 በአገር አቀፍ ደረጃ 17

ሠንጠረዥ 1ለ: ጠቅላላ ምግብና የምግብ ክፍሎች የሽማግሌት ዋጋ መመዘኛ
 ኢንዱስትሪ በአገር አቀፍ ደረጃ18

ሠንጠረዥ 1ሐ: አገር አቀፍ የቤት ኪራይ፣ የቤት መስሪያ እቃዎች፣ውሃና ኢነርጅ
 የሽማግሌት ዋጋ መመዘኛ ኢንዱስትሪ 19

ሠንጠረዥ 2ሀ: ጠቅላላ የሽማግሌት ዋጋ መመዘኛ ኢንዱስትሪ
 በአገር አቀፍና በክልሎች ደረጃ..... 20

ሠንጠረዥ 2ለ: የምግብ ዋጋ መመዘኛ ኢንዱስትሪ ማጠቃለያ በአገር አቀፍ
 እና በክልሎች ደረጃ22

ሠንጠረዥ 3ሀ: ጠቅላላ የሽማግሌት ዋጋ መመዘኛ ኢንዱስትሪና በስሩ የተካተቱ
 ክፍሎች ለአዲስ አበባ ከተማ መስተዳደር.....24

ሠንጠረዥ 3ለ: ጠቅላላ ምግብና የምግብ ክፍሎች የሽማግሌት ዋጋ መመዘኛ
 ኢንዱስትሪ ለአዲስ አበባ ከተማ መስተዳደር..... 25

ሠንጠረዥ 4ሀ: ጠቅላላ የሽማግሌት ዋጋ መመዘኛ ኢንዱስትሪና በስሩ የተካተቱ
 ክፍሎች ለአፋር ክልላዊ መንግስት..... 26

ሠንጠረዥ 4ለ: ጠቅላላ ምግብና የምግብ ክፍሎች የሽማግሌት ዋጋ መመዘኛ
 ኢንዱስትሪ ለአፋር ክልላዊ መንግስት..... 27

ሠንጠረዥ 5ሀ: ጠቅላላ የሽማግሌት ዋጋ መመዘኛ ኢንዱስትሪና በስሩ የተካተቱ

ክፍሎች አማራ ክልላዊ መንግስት.....	28
ሠንጠረዥ 5ለ: ጠቅላላ ምግብና የምግብ ክፍሎች የሽማግሌት ዋጋ መመዘኛ	
ኢንዱስትሪ ለአማራ ክልላዊ መንግስት.....	29
ሠንጠረዥ 6ሀ: ጠቅላላ የሽማግሌት ዋጋ መመዘኛ ኢንዱስትሪ በስሩ የተካተቱ	
ክፍሎች ለቤንሻንጉል-ጉሙዝ ክልላዊ መንግስት.....	30
ሠንጠረዥ 6ለ: ጠቅላላ ምግብና የምግብ ክፍሎች የሽማግሌት ዋጋ መመዘኛ	
ለቤንሻንጉል-ጉሙዝ ክልላዊ መንግስት	31
ሠንጠረዥ 7ሀ: ጠቅላላ የሽማግሌት ዋጋ መመዘኛ ኢንዱስትሪ በስሩ የተካተቱ	
ክፍሎች ለድሬድዋ አስተዳደር ካውንስል	32
ሠንጠረዥ 7ለ: ጠቅላላ ምግብና የምግብ ክፍሎች የሽማግሌት ዋጋ መመዘኛ	
ለድሬድዋ አስተዳደር ካውንስል.....	33
ሠንጠረዥ 8ሀ: ጠቅላላ የሽማግሌት ዋጋ መመዘኛ ኢንዱስትሪ በስሩ የተካተቱ	
ክፍሎች ለጋምቤላ ህዝቦች ክልላዊ መንግስት	34
ሠንጠረዥ 8ለ: ጠቅላላ ምግብና የምግብ ክፍሎች የሽማግሌት ዋጋ መመዘኛ	
ለጋምቤላ ህዝቦች ክልላዊ መንግስት.....	35
ሠንጠረዥ 9ሀ: ጠቅላላ የሽማግሌት ዋጋ መመዘኛ ኢንዱስትሪና በስሩ የተካተቱ ክፍሎች	
ለሐረሪ ህዝብ ክልላዊ መንግስት.....	36
ሠንጠረዥ 9ለ: ጠቅላላ ምግብና የምግብ ክፍሎች የሽማግሌት ዋጋ መመዘኛ	
ኢንዱስትሪ ለሐረሪ ህዝብ ክልላዊ መንግስት.....	37
ሠንጠረዥ 10ሀ: ጠቅላላ የሽማግሌት ዋጋ መመዘኛ ኢንዱስትሪና በስሩ የተካተቱ	
ክፍሎች ለኦሮሚያ ክልላዊ መንግስት.....	38
ሠንጠረዥ 10ለ: ጠቅላላ ምግብና የምግብ ክፍሎች የሽማግሌት ዋጋ መመዘኛ	
ኢንዱስትሪ ለኦሮሚያ ክልላዊ መንግስት.....	39
ሠንጠረዥ 11ሀ: ጠቅላላ የሽማግሌት ዋጋ መመዘኛ ኢንዱስትሪና በስሩ የተካተቱ	
ክፍሎች ለደ.ኢ.ብ.ብ.ሀ ክልላዊ መንግስት.....	40
ሠንጠረዥ 11 ለ: ጠቅላላ ምግብና የምግብ ክፍሎች የሽማግሌት ዋጋ መመዘኛ	
ኢንዱስትሪ ለደ.ኢ.ብ.ብ.ሀ ክልላዊ መንግስት	41
ሠንጠረዥ 12ሀ: ጠቅላላ የሽማግሌት ዋጋ መመዘኛ ኢንዱስትሪ በስሩ የተካተቱ	
ክፍሎች ለሶማሌ ክልላዊ መንግስት	42
ሠንጠረዥ 12ለ: ጠቅላላ ምግብና የምግብ ክፍሎች የሽማግሌት ዋጋ መመዘኛ	

ኢንዱስትሪ ለሰማሌ ክልላዊ መንግስት.....	43
ሠንጠረዥ 13ሀ: ጠቅላላ የሽማግሌት ዋጋ መመዘኛ ኢንዱስትሪና በስፋ የተካተቱ ክፍሎች ለትግራይ ክልላዊ መንግስት.....	44
ሠንጠረዥ 13ለ: ጠቅላላ ምግብና የምግብ ክፍሎች የሽማግሌት ዋጋ መመዘኛ ኢንዱስትሪ ለትግራይ ክልላዊ መንግስት	45

CONTENTS

	Page
Introduction.....	5
Inflation Rate.....	8
Comparison of CPI Movements, Current Vs Last Year's Similar Months, at country Level.....	11
Comparison of CPI Movements, Current Vs Last Month, at country and Regional Levels.....	13

LIST OF TABLES

Table a: Number of Markets Covered and Basket of Commodities by Region.....	3
Table 1a: General Consumer Price Index and Its Components at Country Level.....	17
Table 1b: Consumer Price Index of Total Food and Its Components at Country Level.....	18
Table 1c: Consumer Price Index of House Rent, Construction Materials, Water, Fuel and Power and Its Components at Country Level.....	19
Table 2a: Summary of General Consumer Price Indices at Country and Regional Levels.....	20
Table 2b: Summary of Consumer Price Indices of Food at Country and Regional Levels.....	22
Table 3a: General Consumer Price Index and Its	

Components for the City of Addis Ababa Administration.....	24
Table 3b: Consumer Price Index of Total Food and Its	
<i>Components for the City of Addis Ababa Administration.....</i>	<i>25</i>
Table 4a: General Consumer Price Index and Its	
Components for the Afar Regional State.....	26
Table 4b: Consumer Price Index of Total Food and Its	
Components for the Afar Regional State.....	27
Table 5a: General Consumer Price Index and Its	
Components for the Amhara Regional State.....	28
Table 5b: Consumer Price Index of Total Food and Its	
Components for the Amhara Regional State.....	29
Table 6a: General Consumer Price Index and Its	
Components for the Benishangul-Gumuz Regional State.....	30
Table 6b: Consumer Price Index of Total Food and Its	
<i>Components for the Benishangul-Gumuz Regional State.....</i>	<i>31</i>
Table 7a: General Consumer Price Index and Its	
Components for the Dire Dawa Administrative Council.....	32
Table 7b: Consumer Price Index of Total Food and Its	
<i>Components for the Dire Dawa Administrative Council.....</i>	<i>33</i>
Table 8a: General Consumer Price Index and Its	
Components for the Gambela Peoples Regional State.....	34
Table 8b: Consumer Price Index of Total Food and Its	
<i>Components for the Gambela Peoples Regional State.....</i>	<i>35</i>
Table 9a: General Consumer Price Index and Its	
Components for the Harari Peoples Regional State.....	36

Table 9b: Consumer Price Index of Total Food and Its Components for the Harari Peoples Regional State.....	37
Table 10a: General Consumer Price Index and Its Components for the Oromia Regional State.....	38
Table 10b: Consumer Price Index of Total Food and Its Components for the Oromia Regional State.....	39
Table 11a: General Consumer Price Index and Its Components for the SNNP Regional State.....	40
Table 11b: Consumer Price Index of Total Food and Its Components for the SNNP Regional State.....	41
Table 12a: General Consumer Price Index and Its Components for the Somali Regional State.....	42
Table 12b: Consumer Price Index of Total Food and Its Components for the Somali Regional State.....	43
Table 13a: General Consumer Price Index and Its Components for the Tigray Regional State.....	44
Table 13b: Consumer Price Index of Total Food and Its Components for the Tigray Regional State.....	45

መግቢያ

የሽማግሌት ዋጋ መመዘኛ ኢንዱክሽን ማለት ሽማግሌት ለተወሰኑ ዕቃዎችና አገልግሎቶች የክፈሉትን አማካይ የዋጋ ለውጥ ለመለካት የሚያገለግል ጠቋሚ አህዝ ነው። የዋጋ መመዘኛ ኢንዱክሽን አብዛኛውን ጊዜ መሠረት የሚያደርገው የቤተሰብ ገቢ፣ የፍጆታና ወጪ ጥናት ውጤት በሆነው ቤተሰቦች በዕቃዎችና ግልጋሎቶች ላይ ባወጡት የመቶኛ ድርሻ መጠንና የወቅቱ የገበያ ዋጋ ላይ ነው። በዚህ ሪፖርት ውስጥ የተካተቱት 12 ኢንዱክሶች (የ11 ክልሎችና የአገር አቀፍ) መሠረት ያደረጉት የማዕከላዊ ስታቲስቲክስ ኤጀንሲ በ2008 በጀት ዓመት በመላ አገሪቱ በናሙና በተመረጡ ቦታዎች ያካሄደውን የቤተሰብ ገቢ፣ ፍጆታና ወጪ ጥናት ውጤት ነው።

ይህ ታህሳስ ወር 2009 ዓ.ምን መሠረት ያደረገው (ታህሳስ 2009=100) የሽማግሌት ዋጋ መመዘኛ ኢንዱክሽን በክልል ደረጃ ሲዘጋጅ በዓይነቱ ለአራተኛ ጊዜ የተዘጋጀ ሲሆን በታህሳስ 2004 ዓ.ም መሠረት ያደረገውን የሽማግሌት መመዘኛ ኢንዱክሽን የሚተካ ነው። በአገር አቀፍ ደረጃ ከ1988 ጀምሮና በአዲስ አበባ ከተማ ደረጃ ደግሞ ከ1955 ዓ.ም ጀምሮ በየወሩ ተመሳሳይ ኢንዱክሶች የተዘጋጁ ለተጠቃሚዎች ሲሰራጩ መቆየታቸው ይታወቃል። እነዚህ 12 የዋጋ መመዘኛ ኢንዱክሶች በአገሪቱ የሚገኙ 11 ክልሎችና የአገር አቀፍን ሪፖርት ጨምሮ የሚሸፍነው የዕቃዎችና የአገልግሎቶችን ክምችት በያዙ ሁለት ዋና ክፍሎች የተከፈሉ ናቸው። እነሱም፡- የምግብና ምግብ ነክ ያልሆኑ መመዘኛ ኢንዱክሶች ሲሆን ምግብ ነክ ያልሆኑ መመዘኛ ኢንዱክሽን እንደገና በ11 ንዑስ ክፍሎች ይከፈላል። እነዚህም መጠጥ፣ ሲጃራና ትምባሆ፣ ልብስና መጫሚያ፣ የቤት ኪራይ፣ የቤት መስሪያ ዕቃዎች፣ ውሃና ኢነርጂ፣ የቤት ዕቃዎች፣ የቤት ማስገባቶች፣ የቤት ቁሳቁስና የቤት ሠራተኛ ደመወዝ፣ ሕክምና፣ ትራንስፖርት፣ መገናኛ፣ መዝናኛና ባህል፣ ትምህርት፣ ሬስቶራንትና ሆቴሎች እንዲሁም ሌሎች ዕቃዎችና አገልግሎቶች ሲሆኑ የሁሉም ክፍሎች አጠቃላይ ውጤት የሚሆነው ደግሞ የጠቅላላ ዋጋዎች መመዘኛ ኢንዱክሽን ነው።

በሁሉም ክልሎች የጠቅላላ ዋጋ መመዘኛ ኢንዱክሶች ስሌት አብዛኛውን የመቶኛ ወጪ ድርሻ የሚይዘው የምግብና አልኮል ያልሆኑ መጠጦች መመዘኛ ኢንዱክሽን ሲሆን በሁሉም የምግብ ዋጋ መመዘኛ ኢንዱክሶች ዋና ዋና ክፍሎች ዳቦና እህል፣ ሥጋ፣ ዓሣና የባህር ምግቦች፣ ወተት፣ አይብና እንቁላል፣ ዘይትና ቅባቶች፣ ፍራፍሬ፣ አትክልትና ጥራጥሬ፣ ስኳር ማርና ቸኮሌት፣ ሌሎች ምግቦችና አልኮል ያልሆኑ መጠጦች ናቸው።

ለዋጋ ኢንዱክሶቹ የተመረጡት ዕቃዎችና አገልግሎቶች የዋጋ መረጃ የሚሰበሰበው በየዞን/በየልዩ ወረዳ በተመረጡ ወካይ ከተሞች ውስጥ ባሉ የገበያ ቦታዎች ነው። በመሆኑም ከእያንዳንዱ ዞን ሁለት ከተሞች (የገበያ ቦታዎች) የተመረጡ ሲሆን እንደዚሁም በእያንዳንዱ ልዩ ወረዳ አንድ ከተማ (የገበያ ቦታ) በጥናቱ እንዲካተት ተደርጓል።

በእነዚህ ከተሞች ውስጥ ተመድበው ለሚሰሩ መረጃ ሰብሳቢዎች በየበጀት ዓመቱ መጨረሻ በመረጃ አሰባሰብ ዘዴው ላይ ስልጠና የሚሰጥ ሲሆን ለአሰባሰቡ የሚረዱ የመስክ መገልገያ መሣሪያዎች (ካፒ፣ሚዛን፣ሜትር...ወዘተ) ይሰጣቸዋል። እነዚህ መሣሪያዎችን በመጠቀም በየወሩ የዋጋ መረጃዎችን ከነጋዴዎች ይሰበስባሉ።አንዳንድ ጊዜም አንድ በላተኛ ወይም ገዥ ከነጋዴ ሲገዛ ቢገኝና ለሥራው ተባባሪነቱን ካሳየ መረጃው ክርሱም ይሰበስባል። የችርቻሮ ዋጋ መረጃ የሚሰበሰበው እንደ አውሮፖውያን ዘመን አቆጣጠር ወሩ በገባ ከ1ኛው ቀን አንስቶ እስከ 15ኛው ቀን ነው። የክልል ኢንዱስትሪ ለማስላት ለኢንዱስትሪ ለተመረጡት እቃዎችና አገልግሎቶች አማካይ የችርቻሮ ዋጋቸውን የጂኦሜትሪክ ሚን ዘዴ ጥቅም ላይ ውሏል። የኢንዱስትሪ ሪፖርቱም በየወሩ እ.አ.አ በሁለተኛው ወር 5ኛው ቀን ለተጠቃሚዎች ይሰራጫል። በተጨማሪም ሪፖርቱ በማዕከላዊ ስታቲስቲክስ ኤጂንሲ ድረ-ገጽ ላይ በየወሩ ይወጣል።

የአገር አቀፍ የችርቻሮ ዋጋ መመዘኛ ኢንዱስትሪ የሚሰላው እያንዳንዱ ክልል ለአገር አቀፍ የቤተሰብ ወጪ ያለውን የመቶኛ ድርሻ መሠረት በማድረግ ነው።በመሆኑም ለአገር አቀፍ ኢንዱስትሪ ስሌት ከ94 በመቶ በላይ አስታውጾ የሚያደርጉ ክልሎች በቅደም ተከተል ኦሮሚያ፣አማራ፣የደቡብ ብሄር ብሄረሰቦችና ሕዝቦች፣አዲስ አበባና ትግራይ ሲሆኑ የተቀሩት ክልሎች በየወሩ ለሚታየው አገር አቀፍ የችርቻሮ ዋጋ መመዘኛ ኢንዱስትሪ ስሌት የሚኖራቸው አስታውጾ ከስድስት በመቶ የማይበልጥ ነው።

ለችርቻሮ ዋጋ ጥናት በአጠቃላይ 119 የገበያ ቦታዎች የተመረጡ ሲሆን በእያንዳንዱ ክልል የተመረጡ የገበያዎች ብዛትና በየኢንዱስትሪዎቻቸው ማዕቀፍ የተካተቱ ዕቃዎች/አገልግሎቶች ብዛት ከዚህ በታች ቀርቧል።

ሠንጠረዥ ሀ፡ በጥናቱ የተሸፈኑ ገበያዎች በኢንዱስትሪ ማዕቀፍ የተካተቱ ዕቃዎች አገልግሎቶች ብዛት በክልል

Table A: Number of Markets Covered and Basket of Commodities by Region.

ተ/ቁ No.	ክልል	የገበያ ቦታዎች ብዛት	በኢንዱስትሪ የተካተቱ ዕቃዎች/አገልግሎቶች ብዛት Basket of Goods and Services				Region
			Marke ts	ታህሳስ1993= 100	ታህሳስ1999= 100	ታህሳስ2004= 100	
1	ትግራይ	8	114	143	157	165	Tigray
2	አፋር	4	85	153	123	135	Afar
3	አማራ	20	118	144	160	132	Amhara
4	አሮሚያ	24	127	161	175	171	Oromia
5	ሶማሌ	6	85	122	120	111	Somali e
6	ቤኒሻንጉል ጉሙዝ	6	111	142	164	134	Ben- Gumuz
7	ደ.ብ.ብ.ሀ	31	130	152	168	173	SNNP
8	ጋምቤላ	3	105	103	131	107	Gambel a
9	ሐረሪ	2	102	158	115	156	Harari
10	አዲስ አበባ	12	175	193	165	185	Addis Ababa
11	ድሬድዋ	3	121	150	139	155	D. Dawa
		119	116	147	147	148	

ለጠቋሚ አሀዙ ክንዋኔ ዋናው ነገር ጠቋሚ አሀዙ ማዕቀፍ ተካትተው በዋናነት የሚያገለግሉ እቃዎችና አገልግሎቶች የመምረጥ ጉዳይ ነው። ጠቋሚ አሃዞች የሚመሰረቱት አጠቃላይ በናሙና በሚመረጡ ዕቃዎች ላይ ሲሆን በጠቋሚ አሃዙ ማዕቀፍ ውስጥ መካተት የሚገባው ዕቃ መወሰን ግን ሁሌም ቀላል የሚባል ተግባር አይደለም። የተያያዩ የአመራረጥ ዘዴ መጠቀም ቢቻልም የሚመረጡት ዕቃዎች ለረጅም ጊዜ የሚኖራቸው ተፈላጊነት፣ በአስተማማኝ ሁኔታ በገበያ ላይ የመገኘታቸው ጉዳይ፣ ሌሎችን ዕቃዎች የመወከል ብቃትና ከሌሎች ምርቶች ጋር ያላቸው ተወዳዳሪነት መሠረት ያደረገ እንዲሆን ይፈለጋል። በአጠቃላይ የተመረጡት ዕቃዎች በበቂ መጠን የመገኘታቸው ሁኔታ፣ በየወቅቱ ተወዳዳሪነታቸውና ዕቃዎችና አገልግሎቶች ምድቡን የመወከላቸው ብቃትን ማረጋገጥ ያስፈልጋል።

ይህ ታህሳስ 2009 ዓ/ም መሠረት ያደረገው የሸማቾች ዋጋ መመዘኛ ኢንዱክስ አይነቶችና እያንዳንዳቸው ዋና ክፍል ያለው የወጪ ድርሻ በገፅ 7 ላይ ይታያል። ይህ ሠንጠረዥ እንደሚያሳየው የምግብ የመቶኛ የወጪ ድርሻ ታህሳስ 2004 ዓ/ም ከነበረው 53 በመቶ ወደ 54 በመቶ ጨምሮአል። በአንፃሩ ደግሞ ምግብ ነክ ያልሆነ መመዘኛ ኢንዱክስ ታህሳስ 2004 ዓ/ም ከነበረው 47 በመቶ የወጪ ድርሻ ወደ 46 በመቶ ዝቅ ብሏል።

Introduction

The Consumer Price Index (CPI) measures the average change in the price paid by consumers for a fixed market basket of goods and services. It is usually based on household expenditure weights of the goods and services in the basket and their current market prices. The twelve CPI's (i.e., the CPI's of the 11 Regions and the CPI at Country Level) presented in this report are based on the results of the Household Income, Consumption and Expenditure Survey (HICES) conducted by the Central Statistical Agency in 2015/2016 from which expenditure weights are derived for major household goods and services of that period and adjusted using the December 2016 retail prices of the goods and services as a base period.

The December 2016 based CPI updates the previous CPI series (i.e. December 2011 based) and the newly selected baskets are more diversified and the weights are more accurate. It also showed various improvements and incorporates non-food index as an independent group. The new series is constructed for country as a whole and Regional States including Dire Dawa and the Addis Ababa City Administration. However, similar indices had been utilized at Addis Ababa Level since 1963 and at Country, Urban and Rural Levels since 1995/96 and in Country and Regional level since 2000.

All the twelve general indices are divided into two major groups that is food and non-food index. The non-food index has eleven major divisions each, namely: Alcoholic Beverages; Cigarettes and Tobacco; Clothing and Footwear; House Rent, Construction Materials, Water, and Fuel and Power; Furniture, Furnishing, Household Equipment and Operation; Health; Transport; Communication; Recreation, Culture; Education; Restaurants and Hotels; and Miscellaneous Goods and Services. On the other hand, the Food Index has 10 classes. These are: Bread and Cereals; Meat; Fish and Seafood; Milk, Cheese and Eggs; Oil and Fats; Fruits; Vegetables and Pulses, Sugar, Honey and Chocolate; Food Products n,e.c., and Non-alcoholic beverages.

For the construction of the current consumer price indices, up to date data on retail prices are collected in the purposely from selected sample market places located in representative urban centers in each zone/special weredas of the country. Hence, a

total of 119 market places were selected for the retail price survey. In each market place an enumerator is assigned to undertake the data collection activities every month. The price data is collected from the 1st day through 15th days of European Calendar month under consideration. To calculate the monthly regional consumer price indices, geometric means of prices of the specific regions are used. The distribution of the market place of each region and items included in the basket of commodities are given on Table A on page 3. An important factor in constructing a Consumer Price Index is to select the representative basket of goods and services. Including all consumption items into the market basket of goods and services is both cumbersome and unnecessarily costly in term of data collection and processing. Furthermore, it doesn't make sense to include an insignificant weight into an index basket which could not move the price relative up or downwards compared to the general market trend. As a result, basket of goods and services included in the regional baskets are determined by expenditure cut-off point.

Country level CPI aggregates the regional group indices. The contributions of the six relatively big regions in terms of the magnitude of the expenditure account for more than 95 percent, namely, these regions are Oromia, Amhara, SNNP, Addis Ababa, Somali and Tigray. On the other hand, the contributions of the remaining regions to the Country Level Consumer Price Index is about five percent.

According to the weights for food and non-food groups in Table B below, the December 2016 based CPI is about 54 percent of household expenditure spent on the food component, which increased by 1 percentage points as compared to the December 2006 based CPI. On the other hand, the expenditure on non-food components decreased from 47 percent to 46 percent. The reason for ± 1 percentage point change was that the share of food increased in the two geographically and economically big regions of Oromia and Southern Peoples region.

The 2011 and 2016 CPI adapted the full version of the latest Classification of Individual Consumption by Purpose (COICOP) while the 2006 based CPI was an earlier version of COICOP. The following table shows the different COICOP versions by Comparison. In the 2006 based CPI Recreation, Entertainment and Education; and

Transport and Communication were put in the same divisions while the 2011 and 2016 based CPI separated them as standalone divisions. A new division called Restaurants and Hotels was introduced in the 2011 and 2016 based CPI by moving the food taken away from home previously categorized with Food to this new division. Non-Alcoholic beverages were taken out of the Non-Food division and moved to the Food division.

Table B: Major groups in the 2006, 2011 and 2016 based CPI and their weights
At Country Level

Comparison of COICOP Divisions	December 2006=100	December 2011=100	December 2016=100
1. FOOD AND NON-ALCOHOLIC BEVERAGES	57%	53%	54%
Non - FOOD	43%	47%	46%
2. ALCOHOLIC BEVERAGES AND TOBACCO, NARCOTICS	2.5	4.85	4.9
3. CLOTHING AND FOOTWEAR	8.32	6.62	5.7
4. HOUSING, WATER, ELECTRICITY, GAS AND OTHER FUELS	20.56	16.34	16.8
5. FURNISHINGS, HOUSEHOLD EQUIPMENT AND ROUTINE MAINTENANCE OF THE HOUSE	3.75	5.41	4.7
6. HEALTH	1.11	1.08	1.5
7. TRANSPORT	2.5	2.80	2.5
8. COMMUNICATION	-	1.08	2.0
9. RECREATION AND CULTURE	1.1	0.60	0.4
10. EDUCATION	-	0.45	0.2
11. RESTAURANTS AND HOTELS	-	5.46	5.3
12. MISCELLANEOUS GOODS AND SERVICES	3.2	2.56	2.5
Total	100	100	100

የመስከረም ወር 2012 ዓ.ም የዋጋ ግሽበት ሁኔታ

ሀ) የ12 ወራት ተንከባላይ አማካይ አገራዊ የዋጋ ግሽበት

ከሠንጠረዥ "ሐ" መረዳት እንደሚቻለው የመስከረም ወር 2012 ዓ/ም የተመዘገበው የ12 ወራት ተንከባላይ አማካይ አገራዊ አጠቃላይ የዋጋ ግሽበት ካለፈው ዓመት ተመሳሳይ ወቅት ጋር ሲነፃፀር በ13.6 በመቶ ጭማሪ አሳይቷል። በመስከረም ወር 2012 ዓ.ም አገራዊ የ12 ወራት ተንከባላይ አማካይ የምግብ የዋጋ ግሽበት በ15.6 በመቶ ዕድገት አሳይቷል። የ12 ወራት ተንከባላይ አማካይ አገራዊ ምግብ ነክ ያልሆኑ የዋጋ ግሽበትም በ11.2 በመቶ ጭማሪ አሳይቷል። የ12 ወራት ተንከባላይ አማካይ የዋጋ ግሽበት ረዘም ያለ ጊዜ የዋጋ ግሽበት ሁኔታ የሚያሳይ ነው።

ለ) የዋጋ ግሽበት ሁኔታ ካለፈው ዓመት ተመሳሳይ ወር ጋር በማነፃፀር

የዋጋ ግሽበት ሁኔታ ካለፈው ዓመት ተመሳሳይ ወር ጋር በማነፃፀር የሚገኘው ውጤት ወቅታዊ የዋጋ ግሽበት ሁኔታን ይገልጻል። ሠንጠረዥ/መ/የሚያሳየው የዋጋ ግሽበት ሁኔታ ካለፈው ዓመት ተመሳሳይ ወር ጋር በማነፃፀር ነው። ከሠንጠረዥ መረዳት እንደሚቻለው የመስከረም ወር 2012 ዓ/ም አጠቃላይ የዋጋ ግሽበት ካለፈው ዓመት በመስከረም ወር 2011 ዓ.ም ጋር ሲነፃፀር በ18.6 በመቶ ከፍ ብሏል። የምግብ ዋጋ ግሽበት የመስከረም ወር 2012 ዓ.ም ካለፈው ዓመት የመስከረም ወር 2011 ዓ.ም ጋር ሲነፃፀር በ23.3 በመቶ ጭማሪ አሳይቷል። ዋና ዋና የእህል ዓይነቶች (በተለይ ጤፍ፣ ገብስ፣ ማሽላ፣ በቆሎና የስንዴ ዱቄት) ዋጋ ጭማሪው በዚህም ወርም የቀጠለ ቢሆንም የአጨማሪ ፍጥነት ግን ካለፉት ወራት ያነሰ ነው ። በተጨማሪም በየቀኑ ለምግብነት ተፈላጊ የሆኑት አንዳንድ የአትክልት ዓይነቶች በተለይም **ቲማቲም፣ ቀይ ሽንኩርት እና ነጭ ሽንኩርት** በአንድ ወር ውስጥ ጭማሪ በማሳየታቸው የዋጋ ግሽበቱ ከፍ እንዲል በአጠቃላይ አስተዋጽኦ አድርገዋል። በሌላ በኩል ምግብ ነክ ያልሆኑ የኢንዱስትሪ ክፍሎች የዋጋ ግሽበት የመስከረም ወር 2012 ዓ.ም ካለፈው ዓመት መስከረም ወር 2011 ዓ/ም ጋር ሲነፃፀርም የ13.1 በመቶ ጭማሪ አሳይቷል። ካለፉት ጥቂት ወራት ጀምሮ ምግብ ነክ ያልሆኑ የኢንዱስትሪ ክፍሎች የዋጋ ግሽበት በተከታታይ ጭማሪ እያሳየ ነው። ከምግብ ነክ ያልሆኑ የኢንዱስትሪ ክፍሎች የዋጋ ግሽበት ካለፈው ተመሳሳይ ወቅት ጋር ሲነፃፀር ከፍ እንዲል ካደረጉት ዋና ምክንያቶች ውስጥ በተለይ ልብስና መጫሚያ፣ የቤት ኪራይ፣ የቤት እንክብካቤና ኢነርጅ (ማገደና ከሰል)፣ የቤት ዕቃዎችና የቤት ማስጫዎች፣ የቤት መስሪያ እቃዎች፣ ህክምና እና ትራንስፖርት (በተለይ የቤት መኪና) ላይ የታየው የዋጋ ጭማሪ ነው። የመስከረም ወር በኢትዮጵያ የአዲስ ዓመት መግቢያ ወቅት በመሆኑና ብዙ በዓሎች ስለሚከበሩ ወቅታዊ የዋጋ ግሽበት መጨመር የተለመደ ነው።

ሐ) የዋጋ ግሽበት ሁኔታ የአሁኑን ወር ካለፈው ወር ጋር በማነፃፀር

የመስከረም ወር 2012 ዓ/ም አጠቃላይ የዋጋ ግሽበት ካለፈው ወር ጋር ሲነፃፀር በ1.7 በመቶ ጭማሪ አሳይቷል። ወርሃዊ የዋጋ ግሽበት ምጣኔው በመጨረሻዎቹ ሁለት ተከታታይ ወራት መካከል ያለውን የዋጋ ለውጥ ለመለካት ያገለግላል። ወርሃዊ የዋጋ ግሽበት ምጣኔው የወቅቱን ሁኔታ የሚያሳይ በመሆኑ የአጭር ጊዜ ክስተቱን ብቻ ያመለክታል።

September 2019 Country Level Inflation Rate

12 months Moving Average Inflation at Country Level

As it is indicated in Table 'C' below the country level overall inflation rate (annual change based on 12 months Moving Average) rose by 13.6 percent in September 2019 as compared to the one observed in a similar period a year ago. The country level food inflation increased by 15.6 percent as compared to the one observed a year ago. The country level Non-food inflation rate increased by 11.2 percent in September 2019 as compared to the one observed in August 2018. The 12 months moving average inflation rate shows the longer term inflationary situation.

a) Inflation based on comparison of Current vs. Last year's similar month at Country Level (Year-on-Year Change)

Inflation based on comparison of Current vs. Last year's similar month shows the current inflation situation. Table (D) shows Inflation rate based on last year's similar month comparison. As can be seen from the table the September 2019 General year-on-year inflation has increased by 18.6 percent as compared to the one observed in September 2018. The year-on-year Food inflation has increased by 23.3 percent in September 2019 as compared to the one observed in September 2018. Increases in prices of the major cereal types (especially Teff, Barely, Sorghum, Maize and Wheat flour) have been observed in the current month though the increase shows a bit slower than the previous months. In addition, some of the Vegetables which are important daily ingredients of food (Tomatoes, ONIONS and GARLICS) showed slight rise during one month which has cumulatively contributed to the rising inflation figures. The Non-Food inflation also increased i.e. by 13.1 percent in September 2019 as compared to the one observed in September 2018. The rise in Inflation in the Non-food component is steadily increasing in the recent months mainly due to rise in the prices of Clothing and Footwear, House Rent, Housing Repair and Maintenance, and Energy (Firewood and Charcoal), and Household goods and furnishings, Health Care and Transport (Specially, Household Car). The Month of September is the beginning of Ethiopian New Year with frequent festivals that usually results in the rise of seasonal inflation.

Inflation based on comparison of Current vs. Last month at Country Level (month-on-month)

The month-on-month General CPI for September 2019 has showed an increase of 1.7 percent as compared to the preceding month. The monthly inflation rate measures the price change between the two latest months. Although up to date, it can be affected by seasonal and other short term effects.

ሠንጠረዥ ሐ: በአገር አቀፍ ደረጃ የ12 ወራት ተንከባላይ አማካይ የዋጋ ግሽበት ሁኔታ

Table C: The Country Level 12 months Moving Average Inflation Rate

□□□ □□□ □□□	የዋጋ ግሽበት ሁኔታ			Budget Year and months
	አጠቃላይ የዋጋ ግሽበት	የምግብ ዋጋ ግሽበት	ምግብ ነክ ያልሆኑ የዋጋ ግሽበት	
	General Inflation	Food Inflation	Non-Food Inflation	
ሐምሌ 2009-ሰኔ 2010 ዓመታዊ አማካይ	10.6	11.0	11.0	July 2017 – June 2018 (Annual Average)
ሐምሌ 2010-ሰኔ 2011 (ዓመታዊ አማካይ)	13.7	12.8	14.9	July 2018 – June 2019 (Annual Average)
ሐምሌ 2010	14.8	13.7	16.5	July 2018
ነሐሴ 2010	15.1	13.9	16.7	August 2018
መስከረም 2011	15.0	13.8	16.6	September 2018
ጥቅምት 2011	15.0	13.4	16.8	October 2018
ህዳር 2011	14.4	12.9	16.2	November 2018
ታህሳስ 2011	13.8	12.8	15.4	December 2018
ጥር 2011	13.3	12.2	14.7	January 2019
የካቲት 2011	13.0	11.7	14.4	February 2019
መጋቢት 2011	12.6	11.5	13.8	March 2019
ሚያዝያ 2011	12.5	11.8	13.3	April 2019
ግንቦት 2011	12.6	12.6	12.7	May 2019
ሰኔ 2011	12.6	13.1	11.9	June 2019
ሐምሌ 2011	12.6	13.7	11.4	July 2019
ነሐሴ 2011	13.0	14.5	11.2	August 2019
መስከረም 2012	13.6	15.6	11.2	September 2019

**ሠንጠረዥ መ: የዘንድሮውና የአምናው ተመሳሳይ ወሮች የሽማቾች ዋጋ ኢንዱክስ ለውጥ
ንጽጽር በአገር አቀፍ ደረጃ**

Table D: Summary of Comparison of CPI Movements, Current vs. Last year's Similar Months at Country Level

□□□ □□□ □□□	የዋጋ ግሽበት ሁኔታ			Budget Year and months
	አጠቃላይ የዋጋ ግሽበት	የምግብ ዋጋ ግሽበት	ምግብ ነክ ያልሆኑ የዋጋ ግሽበት	
	General Inflation	Food Inflation	Non-Food Inflation	
ሐምሌ 2009-ሰኔ 2010 ዓመታዊ አማካይ	14.4	13.5	15.8	July 2017 – June 2018 (Annual Average)
ሐምሌ 2010-ሰኔ 2011 (ዓመታዊ አማካይ)	12.6	13.1	12.0	July 2018 – June 2019 (Annual Average)
ሐምሌ 2010	15.3	13.5	17.5	July 2018
ነሐሴ 2010	14.2	13.8	14.8	August 2018
መስከረም 2011	11.9	10.7	13.2	September 2018
ጥቅምት 2011	12.1	9.6	15.2	October 2018
ህዳር 2011	9.3	9.4	9.2	November 2018
ታህሳስ 2011	10.4	11.4	9.1	December 2018
ጥር 2011	10.9	11.5	10.2	January 2019
የካቲት 2011	10.9	10.7	11.2	February 2019
መጋቢት 2011	11.1	11.4	10.8	March 2019
ሚያዝያ 2011	12.9	14.5	11.0	April 2019
ግንቦት 2011	16.2	20.7	11.1	May 2019
ሰኔ 2011	15.4	19.8	10.2	June 2019
ሐምሌ 2011	15.5	20.0	10.3	July 2019
ነሐሴ 2011	17.9	23.0	12.0	August 2019
መስከረም 2012	18.6	23.3	13.1	September 2019

ሠንጠረዥ ሠ: የአሁኑና ያለፈው ወር የሽማግሌት ዋጋ ኢንዱክስ ለውጥ ንጽጽር በአገር አቀፍ ደረጃ

Table E: Summary of Comparison of CPI Movements, Current vs. Last month at Country Level

□□□ □□□ □□□	የዋጋ ግሽበት ሁኔታ			Budget Year and months
	አጠቃላይ የዋጋ ግሽበት	የምግብ ዋጋ ግሽበት	ምግብ ነክ ያልሆኑ የዋጋ ግሽበት	
	General Inflation	Food Inflation	Non-Food Inflation	
ሐምሌ 2009-ሰኔ 2010 ዓመታዊ አማካይ	1.3	1.1	1.5	July 2017 – June 2018 (Annual Average)
ሐምሌ 2010-ሰኔ 2011 (ዓመታዊ አማካይ)	1.2	1.5	0.8	July 2018 – June 2019 (Annual Average)
ሐምሌ 2010	1.2	1.4	1.0	July 2018
ነሐሴ 2010	0.3	0.8	-0.4	August 2018
መስከረም 2011	1.1	1.0	1.3	September 2018
ጥቅምት 2011	-0.3	-0.6	0.1	October 2018
ህዳር 2011	-0.9	-0.6	-1.3	November 2018
ታህሳስ 2011	1.5	0.7	2.4	December 2018
ጥር 2011	1.4	1.1	1.7	January 2019
የካቲት 2011	0.3	1.1	-0.5	February 2019
መጋቢት 2011	2.2	2.2	2.2	March 2019
ሚያዝያ 2011	1.8	3.6	-0.2	April 2019
ግንቦት 2011	4.3	6.1	2.1	May 2019
ሰኔ 2011	1.5	1.7	1.2	June 2019
ሐምሌ 2011	1.4	1.6	1.2	July 2019
ነሐሴ 2011	2.4	3.3	1.2	August 2019
መስከረም 2012	1.7	1.2	2.3	September 2019

የዘንድሮውና የአምናው ተመሳሳይ ወሮች የችርቻሮ ዋጋ መመዘኛ ጠቋሚ አሃዝ

ንፅፅር በአገር አቀፍ ደረጃ

Comparison of CPI Movements, Current vs Last year's Similar Months at Country Level

ከሠንጠረዥ(ሀ) መረዳት እንደሚቻለው የመስከረም ወር 2012 ዓ/ም የአገር አቀፍ ጠቅላላ የችርቻሮ ዋጋ ኢንዱክስ ከመስከረም ወር 2011 ዓ/ም ጠቅላላ ኢንዱክስ ጋር ሲነፃፀር በ18.6 ከመቶ ጭማሪ አሳይቷል። ለዚህ ጭማሪ ምክንያት የሆኑት ምግብና አልኮል ያልሆኑ መጠጦች 23.3 ከመቶ፣ መጠጥ፣ ሲጃራና ትምባሆ በ15.3 ከመቶ፣ ልብስና መጫሚያ በ9.0 ከመቶ፣ የቤት ኪራይ፣ የቤት መስሪያ እቃዎች፣ ውሃና ኢነርጅ በ12.3 ከመቶ፣ የቤት ዕቃዎች፣ የቤት ማስገባቂያዎች፣ የቤት ቁሳቁስና የቤት ሠራተኛ ደመወዝ በ11.5 ከመቶ፣ ህክምና 17.4 ከመቶ፣ ትራንስፖርት 21.2 ከመቶ፣ መገናኛ በ0.9 ከመቶ፣ መዝናኛና ባህል 8.9 ከመቶ፣ ትምህርት በ7.5 ከመቶ፣ ሬስቶራንትና ሆቴሎች በ19.4 ከመቶ እና ሌሎች ዕቃዎችና አገልግሎቶች በ14.6 ከመቶ በየኢንዱስትሪቸው ላይ ጭማሪ በማሳየታቸው ነው።

ሠንጠረዥ(ለ) እንደሚያሳየው ካለፈው ዓመት ተመሳሳይ ወር ጋር ሲነፃፀር አብዛኛዎቹ የምግብ ክፍሎች ጭማሪ አሳይተዋል። ዳቦና እህል በ27.7 ከመቶ፣ ሥጋ በ25.3 ከመቶ፣ ወተት፣ አይብና ዕንቁላል በ18.3 ከመቶ፣ ዘይትና ቅባቶች በ10.3 ከመቶ፣ ፍራፍሬ 27.6 ከመቶ፣ አትክልት፣ ጥራጥሬ፣ ድንችና ሌሎች ስራ ስሮች በ36.2 ከመቶ፣ ስኳር፣ ማርና ቼኮሌት በ8.0 ከመቶ፣ ሌሎች ምግቦች በ11.3 ከመቶ እና አልኮል ያልሆኑ መጠጦችና ቡና በ1.5 ከመቶ በየኢንዱስትሪቸው ላይ ዕድገት አሳይተዋል። በሌላ በኩል ዓሳና የባህር ምግቦች በ3.7 ከመቶ በኢንዱስትሪ ላይ ቅናሽ አሳይቷል።

The September 2019 Country Level Consumer Price Index has increased by 18.6 percent as compared to September 2018 (Table 1(a)). This increase in the General Consumer Price Index is attributed to the rise observed in the indices of Food and Non-alcoholic beverages 23.3 percent, Alcoholic Beverages and Tobacco by 15.3 percent, Clothing and Footwear by 9.0 percent, House Rent, Construction Materials, Water and Fuel and Power by 12.3 percent, Furniture, Furnishings, Household Equipment and Operation by 11.5 percent, Health 17.4 percent, Transport by 21.2 percent, communication 0.9 percent, Recreation and Culture by 8.9 percent, Education by 7.5 percent, Restaurant and Hotels 19.4 percent and Miscellaneous Goods by 14.6 percent.

Most of the components of Food index showed increase as compared to similar month last year (Table1(b)). Bread and Cereals by (27.7 percent), Meat (25.3 percent), Milk, Cheese and Eggs (18.3 percent), Oil and Fats (10.3 percent), Fruits by (27.6 percent), Vegetables and Pulses, Potatoes and Tubers by (36.2 percent), Sugar, Honey and Chocolate (8.0 percent), Other Food Products and spices n.e.c by (11.3 percent) and Non-Alcoholic beverages and Coffee by (1.5 percent). On the other hand, Fish and Seafood declined by (3.7 percent) in its index.

የዘንድሮውና የአምናው ተመሳሳይ ወሮች የችርቻሮ ዋጋ መመዘኛ ጠቋሚ አህዝ ገፅፅ በአገር አቀፍና በክልሎች ደረጃ

Comparison of CPI Movements, Current vs Last year's Similar Months at Regional Levels

ከሠንጠረዥ 2(ሀ) መረዳት እንደሚቻለው የመስከረም ወር 2012 ዓ/ም የአገር አቀፍ ጠቅላላ የችርቻሮ ዋጋ መመዘኛ ኢንዱክስ ከመስከረም ወር 2011 ዓ/ም ጠቅላላ ኢንዱክስ ጋር ሲነፃፀር በ18.6 ከመቶ ጭማሪ አሳይቷል። ለዚህ ጭማሪ አስተዋጽኦ ያደረጉት አዲስ አበባ በ16.6 ከመቶ፣ አፋር 18.9 ከመቶ፣ አማራ 19.8 ከመቶ፣ ቤኒሻንጉል ጉሙዝ በ25.9 ከመቶ፣ ድሬደዋ 17.1 ከመቶ፣ ጋምቤላ 17.3 ከመቶ፣ ሐረሪ በ26.8 ከመቶ፣ ኦሮሚያ በ16.7 ከመቶ፣ ደቡብ ብሄሮች ብሄረሰቦችና ሕዝቦች 18.3 ከመቶ፣ ሶማሌ በ23.3 ከመቶ እና ትግራይ በ23.5 ከመቶ ጭማሪ በማሳየታቸው ነው።

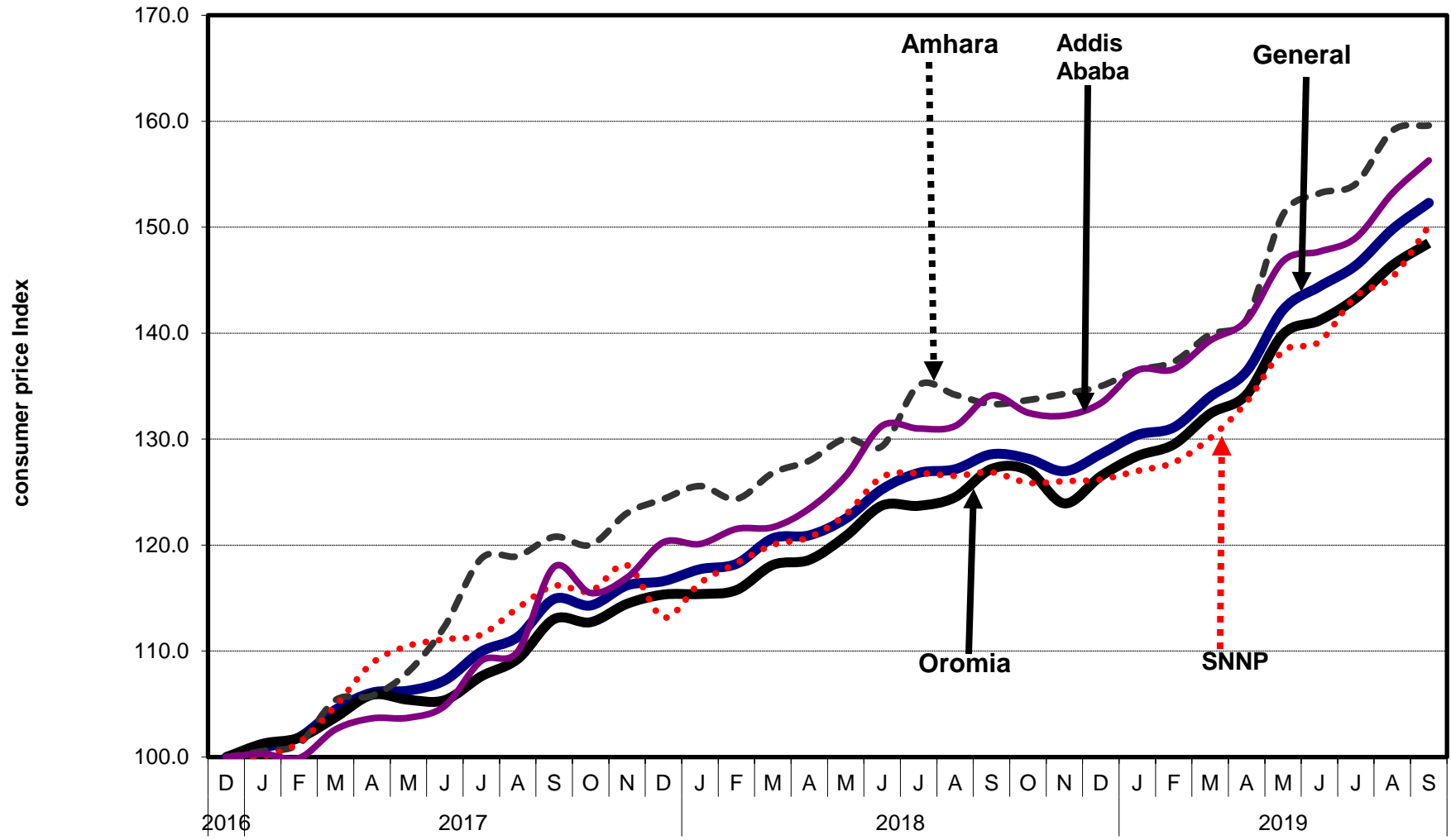
ሠንጠረዥ 2(ለ) እንደሚያሳየው ለምግብ ኢንዱክስ በ23.3 ከመቶ መጨመር ምክንያት ሆኑት አዲስ አበባ በ25.0 ከመቶ፣ አፋር በ23.4 ከመቶ፣ አማራ በ23.1 ከመቶ፣ ቤኒሻንጉል ጉሙዝ በ29.4 ከመቶ፣ ድሬደዋ በ27.2 ከመቶ፣ ጋምቤላ በ17.2 ከመቶ፣ ሐረሪ በ33.0 ከመቶ፣ ኦሮሚያ 23.3 ከመቶ፣ ደቡብ ብሄሮች ብሄረሰቦችና ሕዝቦች በ21.2 ከመቶ፣ ሶማሌ 23.7 ከመቶ እና ትግራይ በ24.0 ከመቶ በምግብ ኢንዱክሶቻቸው ላይ ጭማሪ አሳይተዋል።

Table 2(a) also displays that the September 2019 Country level General Consumer Price Index has increased by 18.6 percent as compared to September 2018. This increase was attributed to the rise in the indices of its constituent regions; namely: Addis Ababa 16.6 percent, Afar by 18.9 percent, Amhara 19.8 percent, Benishangul Gumuz by 25.9 percent, Dire Dawa 17.1 percent, Gambella 13.4 percent, Harari by 26.8 percent, Oromia 16.7 percent, SNNP by 16.3 percent, Somali by 23.3 percent and Tigray by 23.5 percent.

Table 2(b) reveals the rise in the food index by 23.3 percent is due to the rise in the indices of the regions namely: Addis Ababa by 25.0 percent, Afar by 23.4 percent, Amhara 23.1 percent, Benishangul Gumuz by 29.4 percent, Dire Dawa 27.2 percent, Gambella 17.2 percent, Harari 33.3 percent, Oromia 23.3 percent, SNNP 21.2 percent, Somali 23.7 percent and Tigray 24.0 percent.

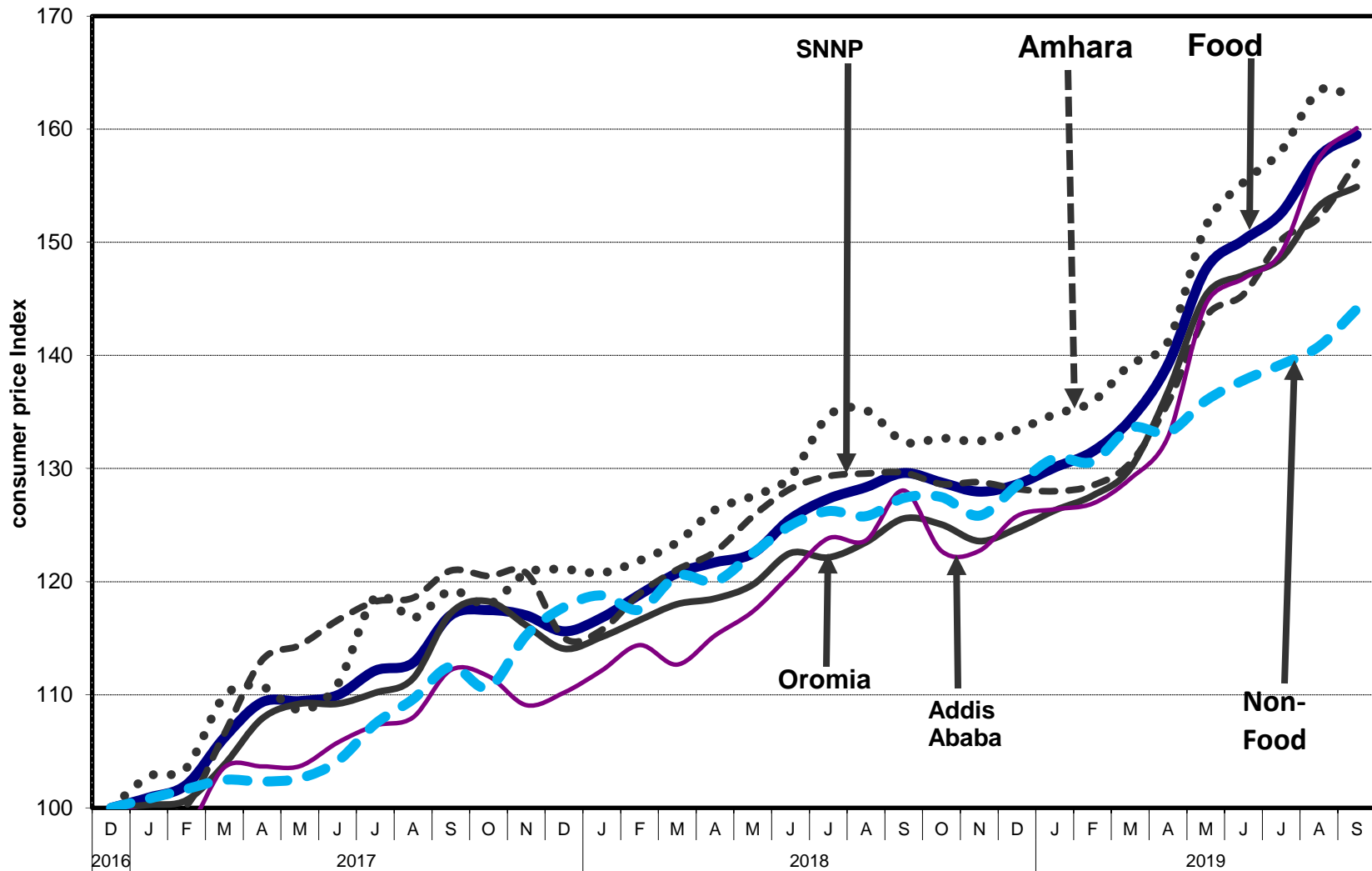
General CPI for Country Level and Major Regions

የሽያጭ ዋጋ ኢንዱክስ ለአገር አቀፍና ለዋና ዋና ክልሎች



የሽያጭ ዋጋ መመዘኛ ኢንዱክስ

Food CPI for Country Level and Major Regions
 የምግብ የሽያጭ ስርዓት ኢንዱስትሪ ለአገር አቀፍና ለዋና ዋና ክልሎች



የሽያጭ ስርዓት ኢንዱስትሪ

ሠንጠረዥ 10፣ ጠቅላላ የሽግግር ዋጋ መመዘኛ ኢንዱስትሪ በሥሩ የተካተቱ ክፍሎች በአገር አቀፍ ደረጃ

ታህሳስ 2009 = 100

Table 1a: General Consumer Price Index and Its Components Country Level
December 2016 = 100

ወርና ዓመት	ጠቅላላ ኢንዱስትሪ	ምግብና አልኮሎል ያልሆኑ መጠጦች	ምግብ ነጻ ያልሆኑ ኢንዱስትሪ	ምግብ ነጻ ያልሆኑ ደረጃ ኢንዱስትሪ ክፍሎች Non-food Consumer Price Index Components											ወርና ዓመት
				መጠጥ ሲጃራና ትምባሆ	ልብስና መጫሚያ	የቤት ኪራይ የቤት መሥሪያ ሠራተኛ ውሃ ነጻጅና ሃይል	የቤት ማስገጫዎች የቤት ቁሳቁስና የቤት ሠራተኛ ደግሞ	ህክምና	ትራንስፖርት	መገናኛና ባህል	መዝናኛ ትምህርት	ሬስቶራንትና ሆቴሎች	ሌሎች አገልግሎቶች		
Month an Year	General Index	Food and Non-Alcoholic Beverages	Non-Food Index	Alcoholic Beverages and Tobacco	Clothing and Footwear	Housing, Water, Electricity, Gas and Other Fuels	Furnishings, Household Equipment and Routine Maintenance of the House	Health	Transport	Communication	Recreation and Culture	Education	Restaurants and Hotels	Misellaneous Goods and services	Month an Year
ታህሳስ 2009	100.0	100.0	100.0	100.0	100.0	100.0	100.0	100.0	100.0	100.0	100.0	100.0	100.0	100.0	December 2016
ሐምሌ 2009 - ሰኔ 2010	117.3	118.0	116.5	110.2	124.5	121.0	119.5	97.8	110.0	104.5	116.5	108.2	113.5	108.0	July 2017 - June 2018
ሐምሌ 2010 - ሰኔ 2011	132.0	133.5	130.3	117.7	147.2	132.8	139.5	112.2	124.1	103.7	125.5	124.8	129.6	123.6	July 2018 - June 2019
2010															2017/2018
ሐምሌ 2009	109.9	112.0	107.4	102.7	115.7	108.2	110.4	96.5	105.2	101.6	112.0	103.2	107.3	100.4	July 2017
ነሐሴ 2009	111.3	112.7	109.6	102.2	115.7	113.8	110.9	95.7	106.7	101.3	114.4	105.3	107.3	101.8	August "
መስከረም 2010	114.9	116.9	112.5	108.6	116.5	117.9	112.0	98.7	107.1	102.3	112.9	109.5	109.2	104.6	September "
ጥቅምት 2010	114.2	117.4	110.6	109.6	114.8	112.5	112.4	92.3	107.8	102.7	112.1	107.4	112.5	103.6	October "
ሀዳር 2010	116.1	116.9	115.3	107.5	117.1	123.1	116.9	93.8	109.4	104.2	115.1	107.3	112.5	104.7	November "
ታህሳስ 2010	116.5	115.4	117.7	114.9	127.6	123.5	116.7	92.6	109.5	103.2	114.9	107.6	115.5	105.1	December "
ጥር 2010	117.7	116.7	118.8	114.5	129.8	124.5	119.6	98.8	109.7	104.7	117.3	108.9	112.7	107.9	January 2018
የካቲት 2010	118.1	118.7	117.5	116.9	123.4	120.9	122.0	100.1	112.1	106.0	117.0	109.1	112.7	109.7	February "
መጋቢት 2010	120.6	120.6	120.5	120.5	125.7	124.7	125.5	100.7	112.6	107.0	119.2	109.4	116.5	110.9	March "
ሚያዝያ 2010	120.8	121.6	120.0	109.2	129.4	124.3	126.2	103.0	112.3	107.1	119.5	110.6	117.2	114.0	April "
ግንቦት 2010	122.4	122.3	122.5	106.1	136.1	128.2	131.1	100.2	113.1	107.6	121.3	111.2	117.2	115.4	May "
ሰኔ 2010	125.2	125.3	125.0	109.5	142.0	130.7	129.8	100.5	114.1	106.9	122.0	109.3	121.5	117.5	June "
2011															2018/2019
ሐምሌ 2010	126.7	127.1	126.2	111.2	139.7	131.4	134.1	109.7	114.9	109.1	121.9	110.1	122.8	119.4	July 2018
ነሐሴ 2010	127.0	128.2	125.8	112.2	139.6	130.8	133.1	105.7	116.1	107.7	123.2	116.3	122.1	118.5	August "
መስከረም 2011	128.4	129.4	127.4	113.5	144.1	131.6	134.6	106.1	115.5	103.3	122.7	126.2	126.3	120.8	September "
ጥቅምት 2011	128.1	128.6	127.6	109.8	146.6	132.0	135.7	109.6	117.0	101.8	124.3	126.3	126.8	118.4	October "
ሀዳር 2011	126.7	127.8	125.5	111.9	141.1	127.1	135.4	109.6	119.3	101.3	124.6	126.6	126.8	119.8	November "
ታህሳስ 2011	128.8	128.6	129.1	115.2	147.4	131.0	137.8	112.6	122.9	100.1	125.8	124.5	130.7	121.1	December "
ጥር 2011	130.7	130.1	131.4	124.0	149.9	132.6	140.3	112.4	126.7	101.0	125.1	125.3	130.1	122.5	January 2019
የካቲት 2011	131.1	131.5	130.7	117.7	152.1	130.7	141.3	115.1	128.4	101.4	127.5	126.4	130.4	123.4	February "
መጋቢት 2011	134.0	134.3	133.6	121.8	150.8	135.9	142.8	120.6	131.5	102.1	127.2	127.3	131.9	125.0	March "
ሚያዝያ 2011	136.4	139.2	133.3	124.7	149.1	134.2	144.3	117.5	129.8	103.6	126.8	129.8	131.9	127.9	April "
ግንቦት 2011	142.3	147.6	136.1	126.6	153.5	137.8	146.6	114.9	133.5	106.2	129.3	128.9	131.8	133.1	May "
ሰኔ 2011	144.3	150.2	137.5	124.0	152.3	138.9	148.5	111.9	133.6	106.6	127.2	129.9	143.4	133.3	June "
2012															2019/2020
ሐምሌ 2011	146.3	152.6	139.2	123.7	159.3	140.5	149.9	116.1	134.3	106.1	126.5	131.5	143.3	133.4	July 2019
ነሐሴ 2011	149.8	157.6	140.8	126.3	152.8	145.8	150.2	120.0	133.8	106.5	129.3	130.6	143.4	134.8	August "
መስከረም 2012	152.3	159.5	144.1	130.9	157.1	147.9	150.0	124.6	140.0	104.3	133.7	135.7	150.9	138.5	September "
	18.6	23.3	13.1	15.3	9.0	12.3	11.5	17.4	21.2	0.9	8.9	7.5	19.4	14.6	

ሠንጠረዥ 30፣ ጠቅላላ የሽግግር ዋጋ መመዘኛ ኢንዱስትሪ በሥሩ የተካተቱ ክፍሎች ለአዲስ አበባ ከተማ አስተዳደር

ታህሳስ 2009 = 100

Table 3a: General Consumer Price Index and Its Components for Addis Ababa City Administration
December 2016 = 100

ወርና ዓመት	ጠቅላላ ኢንዱስትሪ	ምግብና አልኮሎል ያልሆኑ መጠጦች	ምግብ ነጻ ያልሆኑ ኢንዱስትሪ	ምግብ ነጻ ያልሆኑ ኢንዱስትሪ ክፍሎች Non-food Consumer Price Index Components											ወርና ዓመት
				ሎሎቶግራፊያና ትምባሆ	ልብና መጫሚያ	የቤት ኪራይ የቤት መሥሪያ ሰጪ ነጻዎች ሃይል	የቤት ማስገጫዎች የቤት ቁሳቁስና የቤት ሠራተኛ ደግዘ	ህክምና	ትራንስፖርት	መገናኛና ባህላ	ትምህርት	ሬስቶራንትና ሆቴሎች	ሌሎች ስጋዎችና አገልግሎቶች		
Month an Year	General Index	Food and Non-Alcoholic Beverages	Non-Food Index	Alcoholic Beverages and Tobacco	Clothing and Footwear	Housing, Water, Electricity, Gas and Other Fuels	Furnishings/ Household Equipment and Routine Maintenance of the House	Health	Transport	Communication	Recreation and Culture	Education	Restaurants and Hotels	Misellaneous Goods and services	Month an Year
ታህሳስ 2009	100.0	100.0	100.0	100.0	100.0	100.0	100.0	100.0	100.0	100.0	100.0	100.0	100.0	100.0	December 2016
ሐምሌ 2009 - ሰኔ 2010	119.5	112.6	124.8	108.3	104.0	153.3	123.5	119.2	107.6	116.3	109.1	100.0	117.7	109.5	July 2017 - June 2018
ሐምሌ 2010 - ሰኔ 2011	137.0	129.4	142.7	121.1	116.7	179.8	144.9	134.6	117.2	118.6	113.4	119.6	138.8	125.8	July 2018 - June 2019
2010															2017/2018
ሐምሌ 2009	109.1	107.3	110.5	101.7	97.6	122.6	111.2	114.3	107.0	115.0	107.2	100.2	102.8	95.7	July 2017
ነሐሴ 2009	110.0	108.0	111.5	102.7	98.4	122.6	114.1	114.4	107.2	115.0	107.0	100.2	102.8	103.1	August "
መስከረም 2010	118.0	112.2	122.3	105.6	100.3	155.7	117.7	112.4	105.3	115.8	107.6	100.9	109.0	103.8	September "
ጥቅምት 2010	115.5	111.6	118.4	102.8	99.6	138.2	118.1	112.2	106.0	115.4	105.4	100.5	117.9	104.7	October "
ሀዳር 2010	116.9	109.1	122.9	102.0	101.0	150.7	120.9	115.6	107.5	116.4	107.5	99.8	117.7	106.3	November "
ታህሳስ 2010	120.3	110.2	127.9	104.3	102.8	165.0	122.5	113.8	107.4	117.6	109.1	99.3	119.8	108.5	December "
ጥር 2010	120.1	112.1	126.2	105.3	103.8	157.9	124.4	115.9	107.7	117.0	109.2	99.5	118.7	108.7	January 2018
ፀደቅ 2010	121.5	114.4	127.0	111.9	103.4	158.5	126.1	120.1	107.9	117.0	109.4	99.5	118.7	110.8	February "
መጋቢት 2010	121.7	112.7	128.5	120.9	107.3	158.5	129.3	115.9	107.5	116.5	110.5	100.0	123.1	114.5	March "
ሚያዝያ 2010	123.4	115.2	129.7	117.3	112.9	158.7	128.5	126.9	109.0	116.0	112.8	100.4	123.1	117.0	April "
ግንቦት 2010	126.5	117.4	133.5	111.6	110.4	169.9	133.5	133.8	108.9	116.8	112.4	100.1	123.1	118.9	May "
ሰኔ 2010	131.3	120.6	139.3	113.5	110.6	181.6	135.1	134.7	110.2	117.8	111.3	99.7	136.3	122.3	June "
2011															2018/2019
ሐምሌ 2010	131.0	123.8	136.5	113.8	112.0	171.7	137.9	132.6	110.0	116.8	112.4	100.1	134.1	121.4	July 2018
ነሐሴ 2010	131.2	123.7	137.0	116.8	113.5	170.7	136.3	126.3	113.4	116.8	112.6	113.2	136.0	122.5	August "
መስከረም 2011	134.1	128.1	138.7	114.8	115.9	172.0	135.3	131.3	117.4	116.8	112.3	126.7	138.2	123.3	September "
ጥቅምት 2011	132.5	122.7	139.9	117.4	116.0	171.7	141.8	139.0	117.5	121.1	111.5	124.2	138.2	120.9	October "
ሀዳር 2011	132.2	122.7	139.4	117.3	119.7	170.8	140.6	134.4	114.8	119.3	111.7	122.2	138.2	124.1	November "
ታህሳስ 2011	134.2	125.8	140.6	113.7	110.8	175.9	145.0	133.9	116.1	120.8	114.6	120.5	136.9	124.4	December "
ጥር 2011	136.5	126.4	144.2	117.8	116.6	183.8	147.4	136.1	116.2	122.7	114.1	121.7	136.9	126.4	January 2019
ፀደቅ 2011	136.6	126.9	144.0	130.3	115.2	184.1	146.0	136.1	118.7	117.5	111.9	119.2	136.9	126.4	February "
መጋቢት 2011	139.3	129.1	147.1	130.3	117.0	191.8	147.5	126.7	118.4	117.5	112.2	121.3	142.4	128.1	March "
ሚያዝያ 2011	141.2	132.8	147.6	128.2	120.9	188.6	151.4	139.8	120.4	117.5	112.4	124.1	142.4	127.5	April "
ግንቦት 2011	146.8	144.5	148.6	128.8	120.8	189.5	153.5	137.2	122.1	118.3	118.0	121.1	142.4	132.2	May "
ሰኔ 2011	147.7	146.8	148.4	124.2	121.6	186.9	155.7	141.9	122.0	118.3	116.6	120.5	143.9	132.4	June "
2012															2019/2020
ሐምሌ 2011	149.0	149.1	148.9	127.3	122.7	188.7	154.0	140.5	122.1	118.3	115.4	121.7	143.9	133.1	July 2019
ነሐሴ 2011	153.2	157.4	150.0	124.4	124.5	189.9	156.3	147.4	122.1	118.3	117.3	119.6	143.9	134.9	August "
መስከረም 2012	156.3	160.1	153.4	128.4	122.7	198.8	157.2	133.5	126.5	118.3	121.9	135.0	146.8	135.4	September "

ሠንጠረዥ 4ሀ፣ ጠቅላላ የሽግግር ዋጋ መመዘኛ ኢንዱስትሪ ቢሥሩ የተካተቱ ክፍሎች ለአፋር ብሔራዊ ክልላዊ መንግስት
 ታህሳስ 2009 = 100

Table 4a: General Consumer Price Index and Its Components for Afar National Regional State
 December 2016 = 100

ወርና ዓመት	ጠቅላላ ኢንዱስትሪ	ምግብና አልኮሎል ያልሆኑ መጠጦች	ምግብ ነጻ ያልሆኑ ኢንዱስትሪ	ምግብ ነጻ ያልሆኑ ደረጃዎች ክፍሎች Non-food Consumer Price Index Components											ወርና ዓመት
				መጠጥ ሲጃራና ትምባሆ	ልብና መጫሚያ	የቤት ኪራይ የቤት መሥሪያ ፅዕኖች ግብይት ነጻ ሃይል	የቤት ማስገጫዎች የቤት ቁሳቁስና የቤት ሠራተኛ ደግዘ	ሀክምና	ትራንስፖርት	መገናኛና ባህል	ትምህርት	ሬስቶራንትና ሆቴሎች	ሌሎች ስጋዎችና አገልግሎቶች		
Month an Year	General Index	Food and Non-Alcoholic Beverages	Non-Food Index	Alcoholic Beverages and Tobacco	Clothing and Footwear	Housing, Water, Electricity, Gas and Other Fuels	Furnishings/ Household Equipment and Routine Maintenance of the House	Health	Transport	Communication	Recreation and Culture	Education	Restaurants and Hotels	Misellaneous Goods and services	Month an Year
ታህሳስ 2009	100.0	100.0	100.0	100.0	100.0	100.0	100.0	100.0	100.0	100.0	100.0	100.0	100.0	100.0	December 2016
ሐምሌ 2009 - ሰኔ 2010	113.7	114.7	112.7	113.6	115.6	117.4	105.4	111.0	120.7	100.0	122.5	97.2	106.7	107.5	July 2017 - June 2018
ሐምሌ 2010 - ሰኔ 2011	124.4	127.7	121.3	102.4	125.5	127.0	141.6	97.3	124.5	102.7	165.1	110.7	120.2	121.9	July 2018 - June 2019
2010															2017/2018
ሐምሌ 2009	107.8	107.8	107.9	96.2	112.7	118.7	100.1	118.2	107.7	99.8	110.9	100.0	97.1	98.7	July 2017
ነሐሴ 2009	107.6	109.5	105.8	102.2	101.0	115.0	101.3	121.4	107.7	99.7	110.6	100.0	97.1	96.1	August "
መስከረም 2010	110.0	112.1	108.0	104.9	102.2	118.2	100.0	121.6	123.3	100.3	110.2	103.9	97.0	99.6	September "
ጥቅምት 2010	110.9	115.7	106.3	98.4	114.4	109.7	102.0	107.2	123.3	99.7	113.8	98.3	97.0	100.4	October "
ህዳር 2010	113.9	116.9	111.1	91.0	113.2	130.5	103.3	106.9	123.3	99.8	119.2	90.9	97.0	103.9	November "
ታህሳስ 2010	113.7	115.0	112.4	114.0	116.1	112.9	104.9	107.3	123.3	100.0	125.3	106.4	116.4	105.9	December "
ጥር 2010	116.9	118.1	115.7	136.5	117.3	110.9	105.8	107.4	123.3	99.7	128.3	78.5	116.4	109.1	January 2018
የካቲት 2010	116.1	117.1	115.1	124.0	121.8	111.9	107.0	108.0	123.3	100.3	131.3	98.3	116.4	109.5	February "
መጋቢት 2010	117.4	115.8	118.9	134.4	123.6	119.9	107.7	107.8	123.3	99.8	129.4	109.8	111.9	111.5	March "
ሚያዝያ 2010	114.9	113.9	115.8	109.8	121.3	122.8	107.5	108.2	123.3	99.7	129.4	76.1	111.9	115.3	April "
ግንቦት 2010	114.3	111.4	117.1	124.2	121.2	117.4	110.7	107.7	123.3	100.9	130.9	106.2	111.9	120.6	May "
ሰኔ 2010	120.9	123.2	118.7	127.1	121.8	120.3	114.2	109.7	123.3	100.9	131.2	98.3	110.5	119.5	June "
2011															2018/2019
ሐምሌ 2010	120.4	122.1	118.8	124.6	125.5	118.3	115.9	109.8	123.3	100.9	131.3	100.0	113.4	116.9	July 2018
ነሐሴ 2010	120.2	123.3	117.1	114.9	123.6	118.3	117.6	108.9	109.9	100.3	132.5	100.0	117.0	120.2	August "
መስከረም 2011	121.6	127.1	116.2	105.5	124.3	116.8	116.4	108.6	123.3	100.3	133.8	105.6	121.2	119.4	September "
ጥቅምት 2011	122.3	125.8	118.9	107.3	118.7	118.4	145.0	93.5	127.6	100.3	183.8	115.1	121.2	123.3	October "
ህዳር 2011	119.5	122.8	116.3	105.5	121.1	111.5	143.5	92.7	123.3	102.5	167.6	109.8	121.2	114.3	November "
ታህሳስ 2011	121.5	124.5	118.6	103.5	125.7	118.5	143.3	93.3	123.4	102.1	170.9	107.5	118.1	117.5	December "
ጥር 2011	124.1	126.8	121.4	103.3	123.0	127.3	149.5	91.8	123.3	103.4	177.3	114.4	118.1	120.6	January 2019
የካቲት 2011	124.3	124.7	123.9	91.3	122.6	142.0	151.6	91.2	123.3	104.0	174.8	116.4	118.1	123.4	February "
መጋቢት 2011	124.3	126.7	122.0	86.2	123.9	135.5	154.9	92.3	123.3	104.6	176.1	114.4	116.4	124.9	March "
ሚያዝያ 2011	129.9	128.1	131.6	101.9	128.1	160.7	152.2	93.9	123.3	104.6	180.4	110.6	116.4	120.1	April "
ግንቦት 2011	130.9	138.1	123.9	93.3	136.8	127.8	156.6	94.9	123.3	104.3	175.4	115.9	116.4	133.0	May "
ሰኔ 2011	134.3	142.3	126.5	91.8	132.7	129.3	152.4	96.0	146.2	104.5	177.7	118.5	145.3	129.2	June "
2012															2019/2020
ሐምሌ 2011	137.4	146.4	128.7	93.4	134.4	129.5	152.9	96.6	173.3	102.8	166.5	118.5	145.3	142.5	July 2019
ነሐሴ 2011	139.5	151.9	127.5	91.9	134.2	126.8	152.2	103.9	164.3	103.5	160.9	118.5	145.3	139.2	August "
መስከረም 2012	144.5	156.9	132.6	100.5	136.2	135.6	153.8	108.1	173.3	104.0	167.0	107.3	146.1	141.4	September "

ሠንጠረዥ 5ሀ፣ ጠቅላላ የሽግግር ዋጋ መመዘኛ ኢንዱስትሪ በሥራ የተካተቱ ክፍሎች ለአማራ ብሔራዊ ክልላዊ መንግስት
 ታህሳስ 2009 = 100

Table 5a: General Consumer Price Index and Its Components for Amhara National Regional State
 December 2016 = 100

ወርና ዓመት	ጠቅላላ ኢንዱስትሪ	ምግብና አልኮሎል ያልሆኑ መጠጦች	ምግብ ነጻ ያልሆኑ ኢንዱስትሪ	ምግብ ነጻ ያልሆኑ ደረጃዎች ክፍሎች Non-food Consumer Price Index Components											ወርና ዓመት
				መጠጥ ሲጃራና ትምባሆ	ልብስና መጫሚያ	የቤት ኪራይ የቤት መሥሪያ ፅዳቶች ግብርና ሌሎች ነጻ ያልሆኑ	የቤት ማስገጫዎች የቤት ጭላቄና የቤት ሠራተኛ ደግዘ	ህክምና	ትራንስፖርት	መገናኛና ባህል	ትምህርት	ሬስቶራንትና ሆቴሎች	ሌሎች አገልግሎቶች		
Month an Year	General Index	Food and Non-Alcoholic Beverages	Non-Food Index	Alcoholic Beverages and Tobacco	Clothing and Footwear	Housing, Water, Electricity, Gas and Other Fuels	Furnishings/ Household Equipment and Routine Maintenance of the House	Health	Transport	Communication	Recreation and Culture	Education	Restaurants and Hotels	Miscellaneous Goods and services	Month an Year
ታህሳስ 2009	100.0	100.0	100.0	100.0	100.0	100.0	100.0	100.0	100.0	100.0	100.0	100.0	100.0	100.0	December 2016
ሐምሌ 2009 - ሰኔ 2010	124.1	122.0	126.5	140.1	117.5	141.1	116.0	139.2	105.2	108.4	131.0	119.0	113.4	109.0	July 2017 - June 2018
ሐምሌ 2010 - ሰኔ 2011	138.9	138.2	139.7	144.8	140.9	152.3	134.7	174.7	117.8	125.4	141.7	124.4	122.0	122.3	July 2018 - June 2019
2010															
ሐምሌ 2009	118.7	118.6	118.9	134.4	105.0	130.1	106.2	151.4	103.8	95.5	123.2	119.0	111.6	103.3	July 2017
ነሐሴ 2009	118.9	116.8	121.4	135.6	109.9	135.4	106.3	151.7	103.8	93.4	125.5	119.0	111.6	102.2	August "
መስከረም 2010	120.8	119.2	122.5	136.5	109.8	136.9	107.0	160.5	104.5	97.9	126.8	119.0	111.6	103.2	September "
ጥቅምት 2010	120.0	118.0	122.2	141.7	113.0	131.4	107.9	126.6	104.5	102.0	124.9	119.0	119.5	104.0	October "
ሀዳር 2010	123.0	120.8	125.5	139.1	115.0	139.9	110.0	115.9	105.4	107.2	127.0	119.0	119.5	104.6	November "
ታህሳስ 2010	124.3	121.1	127.9	140.3	117.1	145.4	112.6	117.3	105.3	98.7	130.5	119.0	119.5	107.0	December "
ጥር 2010	125.5	120.8	130.8	143.5	116.9	152.2	118.2	153.2	105.4	106.3	132.9	119.0	111.1	109.8	January 2018
የካቲት 2010	124.3	121.9	127.0	145.0	121.1	138.8	121.1	149.5	105.4	112.9	131.6	119.0	111.1	111.2	February "
መጋቢት 2010	126.8	123.5	130.4	146.0	120.6	146.0	124.3	149.7	105.4	119.2	135.6	119.0	111.1	116.2	March "
ሚያዝያ 2010	127.9	126.3	129.6	137.8	125.1	144.1	123.8	145.4	106.5	122.6	132.3	119.0	111.6	115.7	April "
ግንቦት 2010	130.0	127.6	132.7	140.2	128.5	151.1	127.9	124.5	106.2	123.5	139.1	119.0	111.6	115.5	May "
ሰኔ 2010	129.3	129.3	129.3	141.5	128.2	142.1	126.7	124.3	106.2	120.9	142.6	119.0	111.6	114.9	June "
2011															
ሐምሌ 2010	135.0	134.7	135.4	141.6	133.6	149.1	128.0	166.8	107.2	131.6	139.7	119.0	115.8	128.6	July 2018
ነሐሴ 2010	134.0	134.9	133.0	141.5	131.1	147.9	127.2	149.9	106.2	122.9	143.5	119.0	111.6	127.5	August "
መስከረም 2011	133.2	132.2	134.2	141.6	133.2	148.5	128.1	149.6	107.2	132.0	139.6	119.0	115.8	116.4	September "
ጥቅምት 2011	133.9	132.7	135.3	141.1	136.3	150.2	127.0	167.2	111.2	118.8	143.4	120.8	115.8	118.6	October "
ሀዳር 2011	133.5	132.4	134.7	142.0	139.5	146.7	127.7	168.5	116.4	117.7	141.8	124.2	115.8	117.9	November "
ታህሳስ 2011	136.1	133.4	139.0	140.2	143.0	150.6	134.8	179.2	120.6	109.4	141.6	116.7	124.4	120.9	December "
ጥር 2011	137.8	134.8	141.1	144.3	142.9	154.0	138.5	181.8	123.9	112.7	139.6	115.3	124.4	119.5	January 2019
የካቲት 2011	137.4	135.9	139.0	146.4	142.9	148.2	134.7	186.8	117.6	118.5	143.2	126.0	124.4	120.2	February "
መጋቢት 2011	140.0	139.2	140.8	148.1	143.6	146.8	139.3	221.3	126.8	123.1	143.4	123.5	125.5	121.6	March "
ሚያዝያ 2011	141.4	141.2	141.5	148.7	146.0	149.2	141.0	183.3	126.8	128.9	144.1	136.4	125.5	123.4	April "
ግንቦት 2011	151.3	151.4	151.1	153.2	150.4	170.5	143.5	183.2	128.2	145.5	142.5	136.6	125.5	127.5	May "
ሰኔ 2011	153.2	155.3	150.9	148.9	148.4	165.6	146.5	159.4	121.5	143.6	137.9	136.6	139.4	126.1	June "
2012															
ሐምሌ 2011	154.1	158.1	149.6	145.3	150.8	160.8	147.5	176.3	123.1	141.7	137.8	136.6	139.4	125.4	July 2019
ነሐሴ 2011	159.1	163.4	154.3	146.3	151.3	172.2	144.5	203.3	119.1	138.1	145.9	136.6	139.4	130.6	August "
መስከረም 2012	159.6	162.7	156.1	149.7	143.1	175.3	141.5	200.1	119.4	132.2	148.7	130.8	149.2	127.7	September "

ሠንጠረዥ 6ሀ፣ ጠቅላላ የሽግግር ዋጋ መመዘኛ ኢንዱስትሪ ቢሥሩ የተካተቱ ክፍሎች ለቤ/ጉሙዝ ብሔራዊ ክልላዊ መንግስት
 ታህሳስ 2009 = 100

Table 6a: General Consumer Price Index and Its Components for Beneshangual-Gumuz National Regional State
 December 2016 = 100

ወርና ዓመት	ጠቅላላ ኢንዱስትሪ	ምግብና አልኮል ያልሆኑ መጠጦች	ምግብ ነጻ ያልሆኑ ኢንዱስትሪ	ምግብ ነጻ ያልሆኑ ደኢንዱስትሪ ክፍሎች Non-food Consumer Price Index Components											ወርና ዓመት
				መጠጥ ሲጃራና ትምባሆ	ልብስና መጫሚያ	የቤት ኪራይ የቤት መሥሪያ ፅዕቃዎች ሙሃ ነጻጅና ሃይል	የቤት ማስገጫዎች የቤት ቁሳቁስና የቤት ሠራተኛ ደግዝ	ሀክምና	ትራንስፖርት	መገናኛና ባህል	ትምህርት	ሬስቶራንትና ሆቴሎች	ሌሎች ፅዕቃዎችና አገልግሎቶች		
Month an Year	General Index	Food and Non-Alcoholic Beverages	Non-Food Index	Alcoholic Beverages and Tobacco	Clothing and Footwear	Housing, Water, Electricity, Gas and Other Fuels	Furnishings/ Household Equipment and Routine Maintenance of the House	Health	Transport	Communication	Recreation and Culture	Education	Restaurants and Hotels	Misellaneous Goods and services	Month an Year
ታህሳስ 2009	100.0	100.0	100.0	100.0	100.0	100.0	100.0	100.0	100.0	100.0	100.0	100.0	100.0	100.0	December 2016
ሐምሌ 2009 - ሰኔ 2010	116.1	120.1	112.4	101.0	97.6	101.4	126.4	129.7	119.0	100.0	168.5	100.0	135.1	109.4	July 2017 - June 2018
ሐምሌ 2010 - ሰኔ 2011	133.5	133.8	133.2	114.9	114.3	104.9	152.7	189.8	121.4	98.9	179.4	104.2	193.0	122.9	July 2018 - June 2019
2010															2017/2018
ሐምሌ 2009	108.8	112.5	105.4	93.3	94.3	101.7	112.4	99.4	113.1	100.0	162.3	100.0	123.5	99.8	July 2017
ነሐሴ 2009	112.5	120.0	105.6	92.0	100.4	101.1	113.8	97.6	113.1	100.0	162.8	100.0	121.0	104.2	August "
መስከረም 2010	112.9	121.0	105.3	89.5	94.0	99.3	116.0	99.7	115.4	100.0	159.0	100.0	125.9	105.5	September "
ጥቅምት 2010	114.3	122.0	107.0	88.9	94.6	99.1	121.4	99.0	115.4	100.0	165.0	100.0	134.2	100.8	October "
ሀጃር 2010	116.4	124.4	108.9	91.0	92.3	100.4	127.5	103.7	122.5	100.0	171.3	100.0	134.2	105.1	November "
ታህሳስ 2010	113.7	118.1	109.5	94.3	95.5	98.7	123.0	98.8	118.5	100.0	167.7	100.0	140.5	107.6	December "
ጥር 2010	115.7	118.8	112.7	104.8	99.1	100.3	125.9	105.1	121.3	100.0	163.6	100.0	140.8	110.6	January 2018
ፀደቅ 2010	118.1	120.0	116.3	110.5	102.8	102.7	127.4	135.7	123.6	100.0	168.2	100.0	140.8	111.9	February "
መጋቢት 2010	119.1	120.8	117.5	114.4	97.6	103.4	127.1	157.5	123.1	100.0	170.2	100.0	140.8	114.2	March "
ሚያዝያ 2010	120.2	120.9	119.6	111.9	98.9	103.4	135.3	185.6	124.7	100.0	174.1	100.0	140.8	114.1	April "
ግንቦት 2010	119.9	119.5	120.2	112.4	100.4	103.8	137.7	185.6	120.0	100.0	180.0	100.0	140.8	119.0	May "
ሰኔ 2010	121.9	123.2	120.6	109.6	101.7	102.7	149.6	189.1	117.7	100.0	178.1	100.0	138.3	120.1	June "
2011															2018/2019
ሐምሌ 2010	123.6	127.8	119.7	103.4	103.3	102.0	147.8	191.0	117.7	100.0	176.5	100.0	138.3	121.2	July 2018
ነሐሴ 2010	126.3	128.2	124.5	101.3	104.6	102.5	149.2	188.2	117.7	100.0	174.1	100.0	166.4	121.0	August "
መስከረም 2011	127.4	131.5	123.6	113.9	100.8	106.3	144.7	189.4	117.7	100.0	174.0	100.0	152.0	114.9	September "
ጥቅምት 2011	128.7	128.9	128.5	112.4	112.3	103.8	148.7	188.8	117.7	100.0	178.3	100.0	176.8	113.8	October "
ሀጃር 2011	127.8	128.0	127.6	110.7	114.4	99.4	145.9	195.8	117.7	100.0	174.1	100.0	176.8	119.1	November "
ታህሳስ 2011	133.6	133.6	133.5	107.9	117.5	101.8	147.9	188.4	121.7	93.5	180.3	100.0	208.4	120.4	December "
ጥር 2011	134.1	134.6	133.6	108.5	115.9	102.4	146.9	188.8	124.0	93.5	181.2	112.5	208.4	119.8	January 2019
ፀደቅ 2011	134.9	132.8	136.9	117.9	119.0	105.2	153.6	189.6	120.3	100.0	178.9	112.5	208.4	121.2	February "
መጋቢት 2011	135.3	131.0	139.4	118.9	124.6	102.6	149.5	187.9	120.3	100.0	182.5	112.5	224.0	126.6	March "
ሚያዝያ 2011	139.5	135.3	143.5	121.0	127.2	109.4	161.5	189.3	122.6	100.0	176.9	112.5	224.0	130.6	April "
ግንቦት 2011	141.8	142.0	141.7	132.4	108.4	103.6	160.8	188.2	129.9	100.0	189.4	100.0	224.0	131.1	May "
ሰኔ 2011	148.9	151.3	146.6	130.2	123.4	119.2	175.5	192.3	129.9	100.0	187.0	100.0	208.4	134.7	June "
2012															2019/2020
ሐምሌ 2011	153.5	160.2	147.3	130.0	131.9	119.0	172.0	195.0	127.6	100.0	205.5	100.0	208.4	134.8	July 2019
ነሐሴ 2011	155.7	163.1	148.7	132.9	134.6	122.1	170.7	197.6	127.6	100.0	184.4	100.0	208.4	136.4	August "
መስከረም 2012	160.4	170.2	151.3	129.5	135.8	125.9	175.1	196.7	132.1	100.0	212.9	100.0	214.4	136.1	September "

ሠንጠረዥ 7ሀ፣ ጠቅላላ የሽግግር ዋጋ መመዘኛ ኢንዱስትሪ በሥሩ የተካተቱ ክፍሎች ለድሬዳዋ ከተማ አስተዳደር
 ታህሳስ 2009 = 100

Table 7a: General Consumer Price Index and Its Components for Dire Dawa City Administration
 December 2016 = 100

ወርና ዓመት	ጠቅላላ ኢንዱስትሪ	ምግብና አልኮሎል ያልሆኑ መጠጦች	ምግብ ነጻ ያልሆኑ ኢንዱስትሪ	ምግብ ነጻ ያልሆኑ ደረጃዎች ክፍሎች Non-food Consumer Price Index Components											ወርና ዓመት
				መጠጥ ሲጃራና ትምባሆ	ልብስና መጫሚያ	የቤት ኪራይ የቤት መሥሪያ ፅዳቶች ግብርና ሌሎች ነጻ ያልሆኑ	የቤት ማስገጫዎች የቤት ጭላቄና የቤት ሠራተኛ ደግዝ	ሀኪምና	ትራንስፖርት	መገናኛና ባህል	ትምህርት	ሬስቶራንትና ሆቴሎች	ሌሎች ፅዳቶችና አገልግሎቶች		
Month an Year	General Index	Food and Non-Alcoholic Beverages	Non-Food Index	Alcoholic Beverages and Tobacco	Clothing and Footwear	Housing, Water, Electricity, Gas and Other Fuels	Furnishings/ Household Equipment and Routine Maintenance of the House	Health	Transport	Communication	Recreation and Culture	Education	Restaurants and Hotels	Misellaneous Goods and services	Month an Year
ታህሳስ 2009	100.0	100.0	100.0	100.0	100.0	100.0	100.0	100.0	100.0	100.0	100.0	100.0	100.0	100.0	December 2016
ሐምሌ 2009 - ሰኔ 2010	110.8	113.5	108.9	110.4	123.7	106.3	111.2	98.9	97.6	100.0	117.6	103.1	108.1	104.3	July 2017 - June 2018
ሐምሌ 2010 - ሰኔ 2011	125.0	136.7	116.3	109.8	129.5	116.8	126.7	111.9	113.3	66.9	127.5	118.9	123.1	118.3	July 2018 - June 2019
2010															2017/2018
ሐምሌ 2009	104.4	106.0	103.2	93.5	117.7	105.9	101.2	94.1	95.1	100.0	106.3	103.1	105.0	102.1	July 2017
ነሐሴ 2009	105.2	107.3	103.6	98.4	115.1	103.7	105.1	99.7	95.1	100.0	106.3	103.1	105.0	101.1	August "
መስከረም 2010	104.9	104.2	105.4	99.2	118.8	109.2	103.3	99.1	95.7	100.0	107.8	103.1	106.6	100.1	September "
ጥቅምት 2010	112.6	118.2	108.5	124.1	121.2	105.4	102.5	100.0	95.1	100.0	107.2	103.1	106.6	100.2	October "
ህዳር 2010	108.1	109.0	107.4	108.7	125.7	105.0	106.8	98.0	96.3	100.0	119.2	103.1	106.6	99.4	November "
ታህሳስ 2010	109.5	107.3	111.0	139.0	123.3	103.5	104.0	93.8	96.3	100.0	120.9	103.1	108.7	99.5	December "
ጥር 2010	110.0	110.6	109.6	116.2	122.9	105.8	110.5	98.1	95.9	100.0	121.3	103.1	108.7	105.5	January 2018
የካቲት 2010	111.3	113.5	109.7	116.3	124.5	103.7	112.8	99.4	96.8	100.0	122.6	103.1	108.7	105.7	February "
መጋቢት 2010	111.8	112.7	111.1	116.2	125.7	106.8	115.4	99.7	102.7	100.0	124.1	103.1	106.6	104.4	March "
ሚያዝያ 2010	112.7	113.8	111.8	115.0	128.7	108.4	116.5	99.7	97.0	100.0	122.6	103.3	106.6	108.8	April "
ግንቦት 2010	116.1	124.4	109.9	92.6	126.5	108.7	127.1	101.5	96.8	100.0	125.3	103.1	106.6	110.5	May "
ሰኔ 2010	123.6	134.5	115.5	105.4	133.8	109.8	128.8	103.3	107.8	100.0	127.9	103.1	120.7	114.9	June "
2011															2018/2019
ሐምሌ 2010	124.3	136.6	115.1	110.8	132.1	106.0	124.8	100.2	118.8	100.0	125.1	110.7	120.7	113.6	July 2018
ነሐሴ 2010	124.5	132.6	118.5	111.5	134.1	114.2	130.1	106.7	114.0	100.0	125.6	123.6	120.7	115.7	August "
መስከረም 2011	122.4	132.3	115.0	111.0	124.5	116.2	125.7	106.2	125.5	60.2	121.9	113.0	119.0	114.9	September "
ጥቅምት 2011	121.3	129.6	115.1	121.3	128.7	113.2	125.7	110.4	106.1	60.2	114.9	112.7	119.0	113.1	October "
ህዳር 2011	117.9	129.2	109.4	87.1	124.8	114.1	123.6	106.7	107.8	60.2	115.9	112.8	119.0	115.6	November "
ታህሳስ 2011	120.9	128.6	115.2	111.0	131.4	116.2	126.2	106.8	107.8	60.2	116.6	112.7	122.6	116.6	December "
ጥር 2011	120.6	131.7	112.4	101.2	125.4	114.8	119.7	120.7	107.8	60.2	132.4	112.5	122.6	118.0	January 2019
የካቲት 2011	124.0	133.5	116.9	114.2	125.4	118.8	126.4	115.2	119.7	60.2	132.6	112.5	122.6	118.8	February "
መጋቢት 2011	125.6	136.1	117.7	116.4	128.4	118.5	122.6	114.4	119.2	60.2	144.9	142.4	125.6	117.9	March "
ሚያዝያ 2011	128.7	141.9	118.8	115.8	131.6	123.3	126.0	116.5	107.3	60.2	126.7	122.1	125.6	121.0	April "
ግንቦት 2011	134.9	154.5	120.2	116.3	129.2	124.3	133.0	117.4	107.3	60.2	129.3	112.5	125.6	126.1	May "
ሰኔ 2011	135.3	154.3	121.1	101.0	138.4	122.0	137.0	121.1	118.8	60.2	143.8	139.0	133.9	128.1	June "
2012															2019/2020
ሐምሌ 2011	136.9	157.0	122.0	97.7	140.4	130.5	134.0	117.4	120.7	60.2	125.7	143.1	133.9	124.4	July 2019
ነሐሴ 2011	140.7	162.5	124.3	103.1	141.5	134.6	136.9	118.7	114.9	60.2	125.7	148.8	133.9	127.0	August "
መስከረም 2012	143.3	168.3	124.7	113.2	144.0	124.6	145.2	125.0	108.8	60.2	132.3	148.8	132.1	127.0	September "

ሠንጠረዥ 8ሀ፣ ጠቅላላ የሽግግር ዋጋ መመዘኛ ኢንዱስትሪ በሥሩ የተካተቱ ክፍሎች ለጋምቤላ ብሔራዊ ክልላዊ መንግስት
 ታህሳስ 2009 = 100

Table 8a: General Consumer Price Index and Its Components for Gambella National Regional State
 December 2016 = 100

ወርና ዓመት	ጠቅላላ ኢንዱስትሪ	ምግብና አልኮሎል ያልሆኑ መጠጦች	ምግብ ነጻ ያልሆኑ ኢንዱስትሪ	ምግብ ነጻ ያልሆኑ ደረጃዎች ክፍሎች Non-food Consumer Price Index Components											ወርና ዓመት
				ሎሎቲክና ትምባሆ	ልብና መጫሚያ	የቤት ኪራይ የቤት መሥሪያ ሰጪ ሰው ሃይል	የቤት ማስገጫዎች የቤት ጭላቄዎች የቤት ሠራተኛ ደግሞ	ህክምና	ትራንስፖርት	መገናኛና ባህል	ትምህርት	ሬስቶራንትና ሆቴሎች	ሌሎች አገልግሎቶች		
Month an Year	General Index	Food and Non-Alcoholic Beverages	Non-Food Index	Alcoholic Beverages and Tobacco	Clothing and Footwear	Housing, Water, Electricity, Gas and Other Fuels	Furnishings/ Household Equipment and Routine Maintenance of the House	Health	Transport	Communication	Recreation and Culture	Education	Restaurants and Hotels	Misellaneous Goods and services	Month an Year
ታህሳስ 2009	100.0	100.0	100.0	100.0	100.0	100.0	100.0	100.0	100.0	100.0	100.0	100.0	100.0	100.0	December 2016
ሐምሌ 2009 - ሰኔ 2010	110.2	112.9	107.1	129.7	119.9	99.0	115.5	84.7	115.8	104.2	123.9	100.0	114.8	98.5	July 2017 - June 2018
ሐምሌ 2010 - ሰኔ 2011	123.2	129.8	115.6	140.0	132.4	99.4	134.1	96.4	135.3	104.7	126.5	106.9	145.2	106.1	July 2018 - June 2019
2010															2017/2018
ሐምሌ 2009	106.5	109.5	103.0	124.0	104.3	101.8	100.1	87.7	100.9	103.8	110.1	100.0	97.9	97.1	July 2017
ነሐሴ 2009	106.9	111.2	101.9	120.3	99.9	101.2	103.1	76.2	101.0	102.4	114.1	100.0	97.9	95.1	August "
መስከረም 2010	109.7	114.4	104.3	121.6	130.7	101.3	102.6	80.7	101.0	95.1	124.6	100.0	103.1	96.0	September "
ጥቅምት 2010	107.6	110.7	103.9	127.2	110.9	102.6	105.4	78.8	101.0	83.6	121.5	100.0	103.1	96.1	October "
ህዳር 2010	111.1	109.7	112.7	125.9	115.8	115.0	122.6	76.2	101.0	107.8	127.7	100.0	103.1	97.0	November "
ታህሳስ 2010	105.6	107.6	103.2	135.9	119.4	93.6	112.1	68.1	106.6	109.8	124.6	100.0	104.5	100.3	December "
ጥር 2010	106.4	107.4	105.3	131.9	123.5	95.9	119.1	90.9	106.6	103.8	123.0	100.0	104.5	98.6	January 2018
የካቲት 2010	110.0	111.6	108.2	133.7	121.5	101.6	119.9	74.9	134.4	83.6	124.6	100.0	104.5	98.7	February "
መጋቢት 2010	109.5	111.1	107.6	131.7	128.1	88.4	123.5	93.5	134.2	113.5	130.3	100.0	138.8	98.3	March "
ሚያዝያ 2010	113.8	116.9	110.3	136.7	128.0	92.7	123.4	93.2	134.4	120.6	126.9	100.0	138.8	99.3	April "
ግንቦት 2010	115.2	119.5	110.2	138.7	126.4	91.6	128.0	94.7	134.4	111.8	133.5	100.0	138.8	100.5	May "
ሰኔ 2010	120.4	125.3	114.8	128.6	129.8	101.8	125.6	101.3	134.4	115.0	126.1	100.0	142.7	105.3	June "
2011															2018/2019
ሐምሌ 2010	124.6	129.0	119.6	135.6	127.7	112.5	121.0	95.6	134.4	119.6	126.1	100.0	142.7	101.6	July 2018
ነሐሴ 2010	122.0	127.5	115.8	125.6	134.6	104.1	128.8	92.2	134.4	113.6	132.1	100.0	142.7	103.5	August "
መስከረም 2011	120.7	127.0	113.6	126.3	131.4	98.0	133.9	99.8	134.7	112.4	132.1	100.0	142.3	104.2	September "
ጥቅምት 2011	120.1	124.4	115.2	127.4	130.7	102.4	131.2	95.2	134.7	112.4	125.9	102.2	142.3	104.9	October "
ህዳር 2011	118.0	125.6	109.2	129.6	132.9	89.9	131.7	88.5	134.3	106.4	127.5	104.3	142.3	102.4	November "
ታህሳስ 2011	120.6	124.9	115.7	145.1	136.8	98.4	132.6	86.5	134.4	110.6	127.5	104.4	145.8	107.1	December "
ጥር 2011	119.4	125.2	112.6	141.0	131.3	93.0	134.0	87.8	135.6	111.8	127.5	110.3	145.8	104.3	January 2019
የካቲት 2011	120.9	128.7	112.0	143.1	130.4	91.0	138.8	98.8	135.6	90.9	113.6	133.3	145.8	106.3	February "
መጋቢት 2011	124.5	133.3	114.5	150.4	130.7	95.2	141.1	81.8	136.9	90.9	127.5	107.5	146.3	107.8	March "
ሚያዝያ 2011	124.4	130.2	117.7	151.9	130.8	102.0	135.6	101.4	135.6	90.9	124.5	107.0	146.3	105.9	April "
ግንቦት 2011	129.5	140.2	117.2	151.4	133.0	101.4	134.1	79.9	136.7	98.2	124.3	107.0	146.3	110.9	May "
ሰኔ 2011	133.2	141.4	123.8	152.2	138.8	105.0	146.1	149.2	136.0	98.2	129.0	107.0	153.4	114.1	June "
2012															2019/2020
ሐምሌ 2011	136.7	148.7	122.9	156.8	144.2	104.3	138.8	121.8	138.0	98.2	129.0	130.5	153.4	117.3	July 2019
ነሐሴ 2011	138.4	150.1	125.0	154.3	145.6	104.0	142.6	149.7	161.7	98.2	127.5	133.3	153.4	113.7	August "
መስከረም 2012	141.6	148.8	133.4	156.1	143.5	121.3	148.3	121.2	149.6	98.2	136.5	166.0	165.5	118.0	September "

ሠንጠረዥ 9ሀ፡ ጠቅላላ የሽግግር ዋጋ መመዘኛ ኢንዱስትሪ በሥሩ የተካተቱ ክፍሎች ለሐረሪ ብሔራዊ ክልላዊ መንግስት
 ታህሳስ 2009 = 100

Table 9a: General Consumer Price Index and Its Components for Harari National Regional State
 December 2016 = 100

ወርና ዓመት	ጠቅላላ ኢንዱስትሪ	ምግብና አልኮሎል ያልሆኑ መጠጦች	ምግብ ነጻ ያልሆኑ ኢንዱስትሪ	ምግብ ነጻ ያልሆኑ ደረጃዎች ክፍሎች Non-food Consumer Price Index Components											ወርና ዓመት
				መጠጥ ሲጃራና ትምባሆ	ልብስና መጫጫ ያ	የቤት ኪራይ የቤት መሥሪያ ዕቃዎች ውሃ ነጻጅና ሃይል	የቤት ማስገጫዎች የቤት ቁሳቁስና የቤት ሠራተኛ ደግዝ	ሀክምና	ትራንስፖርት	መገናኛና ባህል	ትምህርት	ሬስቶራንትና ሆቴሎች	ሌሎች ስጋዎችና አገልግሎቶች		
Month an Year	General Index	Food and Non-Alcoholic Beverages	Non-Food Index	Alcoholic Beverages and Tobacco	Clothing and Footwear	Housing, Water, Electricity, Gas and Other Fuels	Furnishings/ Household Equipment and Routine Maintenance of the House	Health	Transport	Communication	Recreation and Culture	Education	Restaurants and Hotels	Misellaneous Goods and services	Month an Year
ታህሳስ 2009	100.0	100.0	100.0	100.0	100.0	100.0	100.0	100.0	100.0	100.0	100.0	100.0	100.0	100.0	December 2016
ሐምሌ 2009 - ሰኔ 2010	109.0	111.9	106.9	107.4	112.5	97.8	112.8	109.0	106.4	100.0	112.8	114.3	110.8	106.2	July 2017 - June 2018
ሐምሌ 2010 - ሰኔ 2011	121.4	128.0	116.8	105.9	125.3	110.8	130.4	113.0	126.1	100.0	113.3	147.8	125.4	124.9	July 2018 - June 2019
2010															2017/2018
ሐምሌ 2009	102.8	108.5	98.8	88.8	110.2	95.4	101.7	101.1	100.0	100.0	112.5	102.8	104.0	101.2	July 2017
ነሐሴ 2009	103.0	109.9	98.1	85.6	109.3	94.5	104.5	108.6	100.0	100.0	110.9	102.8	104.0	100.1	August "
መስከረም 2010	104.8	113.9	98.3	84.5	104.3	99.3	102.6	110.4	100.0	100.0	111.4	101.1	105.2	100.1	September "
ጥቅምት 2010	106.7	117.0	99.5	89.7	112.2	90.8	109.8	105.7	102.2	100.0	112.2	111.4	104.4	103.8	October "
ሀዳር 2010	103.4	108.0	100.2	81.8	109.6	102.0	107.0	106.0	102.4	100.0	111.4	114.9	108.5	103.6	November "
ታህሳስ 2010	105.2	106.7	104.1	103.3	112.2	89.2	113.5	107.4	102.4	100.0	110.2	120.2	111.5	106.0	December "
ጥር 2010	109.0	108.2	109.5	114.8	117.7	95.8	114.4	110.3	111.6	100.0	115.9	120.5	111.5	106.4	January 2018
የካቲት 2010	115.3	111.7	117.8	147.0	114.5	101.2	113.9	115.8	111.8	100.0	116.4	118.0	111.1	104.6	February "
መጋቢት 2010	113.7	110.5	115.9	133.4	114.2	101.7	119.8	108.9	111.6	100.0	108.2	119.1	116.9	108.6	March "
ሚያዝያ 2010	112.4	108.8	114.9	133.1	115.9	96.7	117.3	108.7	111.6	100.0	114.0	113.6	116.9	109.5	April "
ግንቦት 2010	116.8	116.5	116.9	133.6	114.6	102.0	121.5	112.5	111.6	100.0	116.0	119.3	118.4	112.9	May "
ሰኔ 2010	114.5	122.6	108.9	93.5	115.3	105.4	127.7	112.8	111.8	100.0	113.8	127.9	117.6	117.7	June "
2011															2018/2019
ሐምሌ 2010	115.6	124.9	109.0	89.2	124.8	105.8	128.5	111.1	111.6	100.0	113.2	127.7	117.6	115.8	July 2018
ነሐሴ 2010	114.9	123.9	108.7	91.3	115.6	107.2	126.1	111.4	111.6	100.0	108.6	128.6	118.7	116.6	August "
መስከረም 2011	117.6	121.6	114.9	100.9	123.7	108.9	131.3	110.1	111.6	100.0	109.5	150.5	128.9	118.5	September "
ጥቅምት 2011	116.9	122.9	112.7	92.4	125.1	109.1	124.7	112.1	111.6	100.0	114.0	152.2	128.9	118.2	October "
ሀዳር 2011	117.1	123.8	112.4	91.8	122.4	107.6	132.2	111.9	111.6	100.0	112.9	151.1	128.9	117.6	November "
ታህሳስ 2011	118.3	124.2	114.2	104.2	123.0	108.7	125.4	113.5	130.5	100.0	111.0	152.0	117.3	124.7	December "
ጥር 2011	121.8	126.9	118.3	113.5	128.7	112.7	127.3	111.5	141.4	100.0	114.2	152.8	117.3	121.4	January 2019
የካቲት 2011	121.6	124.5	119.6	114.7	129.7	117.2	129.1	111.1	132.0	100.0	110.5	151.7	117.3	127.4	February "
መጋቢት 2011	123.6	126.3	121.8	119.1	126.7	113.4	131.1	107.6	132.0	100.0	109.1	152.3	129.0	134.0	March "
ሚያዝያ 2011	124.2	131.9	118.9	108.7	125.8	106.2	139.9	109.3	139.8	100.0	113.9	152.6	129.0	134.2	April "
ግንቦት 2011	130.5	140.8	123.2	119.3	125.8	114.0	136.3	122.1	139.8	100.0	121.2	150.6	129.0	134.3	May "
ሰኔ 2011	134.9	143.8	128.6	125.3	132.2	119.1	133.1	124.7	139.8	100.0	121.3	151.3	142.7	136.4	June "
2012															2019/2020
ሐምሌ 2011	135.7	144.6	129.4	131.4	134.0	114.7	133.2	117.5	150.0	100.0	120.6	150.6	142.7	133.8	July 2019
ነሐሴ 2011	142.2	155.2	133.1	144.2	134.8	116.6	132.5	124.5	150.0	100.0	121.0	148.6	142.7	134.7	August "
መስከረም 2012	149.1	161.8	140.3	124.2	141.7	156.6	134.6	129.6	150.0	100.0	123.8	148.6	157.7	131.9	September "

ሠንጠረዥ 10U፤ ጠቅላላ የሽያጭ ዋጋ መመዘኛ ኢንዱስትሪ በሥራ የተካተቱ ክፍሎች ለአርጌያ ብሔራዊ ክልላዊ መንግስት
 ታህሳስ 2009 = 100

Table 10a: General Consumer Price Index and Its Components for Oromia National Regional State
 December 2016 = 100

ወርና ዓመት	ጠቅላላ ኢንዱስትሪ	ምግብና አልኮሎል ያልሆኑ መጠጦች	ምግብ ነጻ ያልሆኑ ኢንዱስትሪ	ምግብ ነጻ ያልሆኑ ደረጃዎች ክፍሎች Non-food Consumer Price Index Components											ወርና ዓመት
				መጠጥ ሲጃራና ትምባሆ	ልብስና መጫሚያ	የቤት ኪራይ የቤት መሥሪያ ሰጪ ሰጪ ሰጪ ነጻ ሃይል	የቤት ማስገጫዎች የቤት ቁሳቁስና የቤት ሠራተኛ ደግሞ	ሀኪምና	ትራንስፖርት	መገናኛና ባህል	ትምህርት	ሬስቶራንትና ሆቴሎች	ሌሎች ስቃይቶችና አገልግሎቶች		
Month an Year	General Index	Food and Non-Alcoholic Beverages	Non-Food Index	Alcoholic Beverages and Tobacco	Clothing and Footwear	Housing, Water, Electricity, Gas and Other Fuels	Furnishings/ Household Equipment and Routine Maintenance of the House	Health	Transport	Communication	Recreation and Culture	Education	Restaurants and Hotels	Misellaneous Goods and services	Month an Year
ታህሳስ 2009	100.0	100.0	100.0	100.0	100.0	100.0	100.0	100.0	100.0	100.0	100.0	100.0	100.0	100.0	December 2016
ሐምሌ 2009 - ሰኔ 2010	115.4	116.5	114.0	100.6	141.3	116.2	119.7	69.9	112.2	100.8	114.0	117.4	106.9	105.2	July 2017 - June 2018
ሐምሌ 2010 - ሰኔ 2011	129.9	129.8	129.9	111.6	169.1	129.4	140.9	77.4	133.6	102.8	121.7	133.4	123.0	120.5	July 2018 - June 2019
2010															2017/2018
ሐምሌ 2009	107.6	110.2	104.3	98.1	131.9	100.3	109.9	68.2	104.3	99.1	110.7	109.9	101.1	98.7	July 2017
ነሐሴ 2009	109.3	111.4	106.5	95.2	130.4	107.0	110.5	67.1	107.3	99.2	109.1	118.6	101.1	100.9	August "
መስከረም 2010	113.0	117.2	107.6	97.5	129.5	108.8	111.8	67.8	107.4	99.5	111.4	118.8	101.4	103.8	September "
ጥቅምት 2010	112.7	118.3	105.6	97.1	124.8	104.6	113.3	68.3	109.3	99.4	110.4	116.2	101.4	102.3	October "
ሀዳር 2010	114.5	116.1	112.3	97.5	127.6	119.6	119.2	72.2	112.0	100.3	115.6	112.6	101.4	102.6	November "
ታህሳስ 2010	115.3	114.1	117.0	102.4	149.1	122.8	116.8	68.1	112.6	100.8	111.9	114.6	105.5	100.8	December "
ጥር 2010	115.4	115.1	115.7	103.0	155.3	115.0	119.9	69.5	111.8	101.9	115.6	119.3	105.5	104.3	January 2018
የካቲት 2010	115.8	116.6	114.7	105.8	136.2	116.6	122.4	71.3	115.5	102.8	113.7	116.8	105.5	106.8	February "
መጋቢት 2010	118.1	118.0	118.3	110.9	139.8	120.3	126.1	71.0	118.2	102.7	117.3	121.3	113.0	106.3	March "
ሚያዝያ 2010	118.6	118.5	118.7	101.0	145.0	122.2	127.5	72.1	116.1	101.4	116.5	122.3	113.0	111.2	April "
ግንቦት 2010	120.9	119.7	122.3	100.0	157.1	127.0	131.5	71.3	114.8	102.1	117.6	118.8	113.0	111.1	May "
ሰኔ 2010	123.7	122.5	125.3	99.1	168.9	129.7	128.3	71.9	116.6	100.5	117.9	118.9	120.4	113.3	June "
2011															2018/2019
ሐምሌ 2010	123.7	122.1	125.7	101.6	162.2	129.4	135.0	75.1	119.8	102.1	119.0	130.2	120.4	114.5	July 2018
ነሐሴ 2010	124.5	123.5	125.8	102.1	162.1	129.9	134.9	75.6	119.5	102.0	118.6	133.0	120.4	112.5	August "
መስከረም 2011	127.2	125.6	129.3	106.5	170.0	131.9	137.5	74.3	118.8	103.5	119.8	127.5	126.9	117.7	September "
ጥቅምት 2011	127.1	125.1	129.6	103.9	169.7	134.0	138.1	74.4	121.1	102.9	120.5	131.3	126.9	114.5	October "
ሀዳር 2011	123.9	123.6	124.4	105.4	155.4	123.6	137.0	74.9	125.5	102.8	120.8	133.1	126.9	115.9	November "
ታህሳስ 2011	126.5	124.7	128.9	110.5	169.2	129.1	136.7	76.8	131.4	102.6	121.4	133.4	121.8	117.4	December "
ጥር 2011	128.4	126.3	131.1	122.0	172.6	128.0	140.1	76.6	139.3	101.9	119.5	132.6	119.5	121.1	January 2019
የካቲት 2011	129.5	127.6	131.8	115.4	178.4	127.7	143.8	78.0	143.4	102.3	126.7	135.8	120.6	120.8	February "
መጋቢት 2011	132.4	130.0	135.3	120.2	173.9	136.9	145.1	79.1	145.8	102.2	123.5	132.0	121.3	120.8	March "
ሚያዝያ 2011	134.2	136.8	130.8	120.5	167.6	125.9	144.9	83.0	140.4	103.6	121.3	136.6	121.3	127.5	April "
ግንቦት 2011	139.9	145.3	133.0	118.2	176.4	126.9	148.6	79.9	146.9	103.6	126.5	137.3	121.3	132.4	May "
ሰኔ 2011	141.2	147.1	133.6	112.6	171.3	130.0	149.4	81.4	150.6	103.7	123.3	137.5	129.2	130.3	June "
2012															2019/2020
ሐምሌ 2011	143.3	148.6	136.5	113.1	185.8	131.6	152.5	84.7	146.2	102.9	119.2	146.9	129.2	131.9	July 2019
ነሐሴ 2011	146.4	153.2	137.6	115.3	170.0	139.4	153.6	82.4	147.0	104.0	120.7	145.5	129.2	133.5	August "
መስከረም 2012	148.5	154.9	140.3	123.2	184.2	135.0	153.0	89.2	152.9	101.9	127.4	131.3	137.2	136.6	September "

ሠንጠረዥ 11ሀ፤ ጠቅላላ የሽያጭ ዋጋ መመዘኛ ኢንዱስትሪ በሥሩ የተካተቱ ክፍሎች ለደቡብ ብሔራዊ ክልላዊ መንግስት ታህሳስ 2009 = 100

Table 11a: General Consumer Price Index and Its Components for SNNP National Regional State December 2016 = 100

ወርና ዓመት	ጠቅላላ ኢንዱስትሪ	ምግብና አልኮሎል ያልሆኑ መጠጦች	ምግብ ከ ኢንዱስትሪ	ምግብ ከ ያልሆኑ ደረጃዎች ክፍሎች Non-food Consumer Price Index Components											ወርና ዓመት
				መጠጥ ሲጃራና ትምባሆ	ልብስና መጫሚያ	የቤት ኪራይ የቤት መሥሪያ ፅዕኖች ሙሃ ነጻጅና ሃይል	የቤት ማስገጫዎች የቤት ቁሳቁስና የቤት ሠራተኛ ደግዘ	ህክምና	ትራንስፖርት	መገናኛና ባህል	ትምህርት	ሬስቶራንትና ሆቴሎች	ሌሎች ስጋዎችና አገልግሎቶች		
Month an Year	General Index	Food and Non-Alcoholic Beverages	Non-Food Index	Alcoholic Beverages and Tobacco	Clothing and Footwear	Housing, Water, Electricity, Gas and Other Fuels	Furnishings/ Household Equipment and Routine Maintenance of the House	Health	Transport	Communication	Recreation and Culture	Education	Restaurants and Hotels	Misellaneous Goods and services	Month an Year
ታህሳስ 2009	100.0	100.0	100.0	100.0	100.0	100.0	100.0	100.0	100.0	100.0	100.0	100.0	100.0	100.0	December 2016
ሐምሌ 2009 - ሰኔ 2010	117.8	120.5	114.3	108.4	112.2	114.0	128.8	111.3	109.7	100.2	119.1	112.8	118.7	110.9	July 2017 - June 2018
ሐምሌ 2010 - ሰኔ 2011	129.5	132.1	126.1	124.1	127.5	120.0	147.5	120.2	119.6	72.5	129.1	129.3	140.2	127.9	July 2018 - June 2019
2010															2017/2018
ሐምሌ 2009	111.6	118.2	102.9	102.6	105.5	97.1	122.1	100.0	106.3	99.6	114.8	105.2	106.5	104.3	July 2017
ነሐሴ 2009	114.1	118.6	108.2	101.4	104.8	109.3	119.6	102.5	106.8	99.7	128.6	105.7	106.5	102.1	August "
መስከረም 2010	116.2	121.0	110.0	103.9	106.3	110.2	123.9	107.3	107.3	100.4	113.9	118.0	108.2	108.0	September "
ጥቅምት 2010	115.7	120.5	109.4	104.9	107.1	110.4	122.3	105.7	107.1	99.8	115.0	110.7	106.6	104.8	October "
ሀገር 2010	118.1	120.8	114.7	104.2	108.7	120.8	124.1	109.3	107.6	100.0	114.9	112.1	106.6	107.0	November "
ታህሳስ 2010	113.2	115.0	110.8	104.9	111.1	108.5	125.7	112.8	107.3	100.2	116.8	112.9	120.0	106.9	December "
ጥር 2010	116.4	115.7	117.3	108.7	112.9	120.2	127.7	111.7	108.9	100.2	117.4	114.3	123.1	113.0	January 2018
የካቲት 2010	118.3	118.9	117.5	113.3	115.1	117.5	129.9	112.9	112.7	100.6	119.9	116.7	123.1	113.7	February "
መጋቢት 2010	120.0	121.1	118.7	113.6	115.6	118.5	133.0	116.0	110.4	100.7	120.2	116.6	128.1	115.2	March "
ሚያዝያ 2010	120.7	122.6	118.3	114.5	118.5	115.6	135.2	117.5	110.5	100.4	123.4	116.3	131.3	117.3	April "
ግንቦት 2010	122.9	125.8	119.2	114.9	120.1	114.5	140.2	119.2	115.5	100.7	122.5	114.2	131.3	118.8	May "
ሰኔ 2010	126.4	128.2	124.1	113.9	120.8	125.0	141.9	120.2	116.7	100.6	122.3	110.8	133.0	120.3	June "
2011															2018/2019
ሐምሌ 2010	126.8	129.3	123.5	114.4	121.5	123.9	142.1	114.3	114.2	101.0	123.3	113.4	133.1	119.3	July 2018
ነሐሴ 2010	126.5	129.6	122.6	115.5	122.5	119.2	143.6	117.1	119.4	101.6	124.7	113.7	133.1	121.6	August "
መስከረም 2011	126.9	129.6	123.3	119.2	124.2	119.6	144.8	116.9	113.3	64.5	128.5	131.5	136.7	124.4	September "
ጥቅምት 2011	125.9	128.6	122.3	119.4	125.4	117.0	143.8	119.6	115.3	64.8	126.0	130.5	136.7	122.4	October "
ሀገር 2011	126.0	128.8	122.5	121.1	127.3	115.1	145.2	119.3	117.4	64.9	128.5	133.4	136.7	126.3	November "
ታህሳስ 2011	126.2	128.2	123.6	122.6	127.1	116.7	145.8	120.5	115.9	65.4	129.8	129.9	139.5	125.9	December "
ጥር 2011	127.0	128.0	125.8	125.2	129.9	118.6	148.7	118.7	117.9	66.3	128.1	130.7	139.5	127.5	January 2019
የካቲት 2011	127.8	128.5	127.0	127.6	130.2	117.9	150.2	123.2	118.7	68.0	130.8	132.0	139.5	129.5	February "
መጋቢት 2011	130.1	130.5	129.5	132.6	129.7	121.5	149.2	126.5	122.5	68.1	131.2	129.0	144.9	130.9	March "
ሚያዝያ 2011	133.5	135.8	130.5	132.5	130.6	122.1	152.1	123.2	127.7	67.9	132.7	132.4	144.9	132.4	April "
ግንቦት 2011	138.3	143.4	131.7	129.9	130.8	126.0	151.7	118.6	127.1	66.9	133.6	135.8	144.9	135.4	May "
ሰኔ 2011	139.2	145.4	131.2	128.7	130.3	122.3	152.2	124.8	125.9	70.8	131.4	139.2	152.7	138.9	June "
2012															2019/2020
ሐምሌ 2011	143.5	150.2	134.8	129.5	131.7	129.5	153.3	124.6	130.4	72.0	135.5	140.8	152.7	137.2	July 2019
ነሐሴ 2011	145.3	152.2	136.4	128.5	131.6	129.7	154.8	121.1	129.2	75.4	137.1	139.3	152.7	138.7	August "
መስከረም 2012	150.1	157.1	141.1	134.0	121.9	136.0	156.9	129.6	143.4	72.1	138.1	139.7	162.2	145.0	September "

ሠንጠረዥ 12ሀ፤ ጠቅላላ የሽያጭ ዋጋ መመዘኛ ኢንዱስትሪ በሥራ የተካተቱ ክፍሎች ለሱማሌ ብሔራዊ ክልላዊ መንግስት
 ታህሳስ 2009 = 100

Table 12a: General Consumer Price Index and Its Components for Somali National Regional State
 December 2016 = 100

ወርና ዓመት	ጠቅላላ ኢንዱስትሪ	ምግብና አልኮሎል ያልሆኑ መጠጦች	ምግብ ነጻ ያልሆኑ ኢንዱስትሪ	ምግብ ነጻ ያልሆኑ ደረጃዎች ክፍሎች Non-food Consumer Price Index Components											ወርና ዓመት
				መጠጥ ሲጃራና ትምባሆ	ልብስና መጫሚያ	የቤት ኪራይ የቤት መሥሪያ ፅዕኖች ግብርና ሌሎች ነጻዎች	የቤት ማስገጫዎች የቤት ቁሳቁስና የቤት ሠራተኛ ደግዘ	ህክምና	ትራንስፖርት	መገናኛና ባህል	ትምህርት	ሬስቶራንትና ሆቴሎች	ሌሎች ስጋዎችና አገልግሎቶች		
Month an Year	General Index	Food and Non-Alcoholic Beverages	Non-Food Index	Alcoholic Beverages and Tobacco	Clothing and Footwear	Housing, Water, Electricity, Gas and Other Fuels	Furnishings/ Household Equipment and Routine Maintenance of the House	Health	Transport	Communication	Recreation and Culture	Education	Restaurants and Hotels	Misellaneous Goods and services	Month an Year
ታህሳስ 2009	100.0	100.0	100.0	100.0	100.0	100.0	100.0	100.0	100.0	100.0	100.0	100.0	100.0	100.0	December 2016
ሐምሌ 2009 - ሰኔ 2010	110.4	113.7	106.7	110.6	114.5	98.1	113.3	123.7	113.5	100.5	143.7	122.9	113.6	108.8	July 2017 - June 2018
ሐምሌ 2010 - ሰኔ 2011	124.1	132.5	114.7	107.0	144.7	102.0	129.4	147.6	130.1	102.8	156.7	134.0	131.8	131.9	July 2018 - June 2019
2010															2017/2018
ሐምሌ 2009	100.8	103.3	98.1	91.6	107.1	94.5	108.3	118.5	113.2	100.4	128.6	99.2	112.4	98.0	July 2017
ነሐሴ 2009	102.5	105.3	99.3	93.8	105.1	95.6	116.5	102.7	113.3	100.1	128.4	109.7	112.4	97.9	August "
መስከረም 2010	111.1	112.2	110.0	120.0	116.1	102.2	105.5	120.9	113.0	99.4	131.9	113.3	117.7	98.8	September "
ጥቅምት 2010	110.1	111.7	108.3	122.0	105.0	101.2	104.9	112.1	113.3	100.3	129.5	120.7	98.2	100.6	October "
ህዳር 2010	110.4	114.8	105.5	113.3	113.0	95.2	109.3	114.5	113.5	101.2	149.4	127.2	98.2	107.1	November "
ታህሳስ 2010	115.0	115.2	114.8	134.9	121.5	99.0	110.8	134.6	113.5	100.3	134.5	128.3	116.4	109.2	December "
ጥር 2010	110.1	111.5	108.6	122.5	109.0	97.7	108.2	114.1	113.3	100.9	157.8	140.8	116.4	104.4	January 2018
የካቲት 2010	112.0	113.9	109.9	122.6	111.4	99.0	111.8	115.7	113.3	100.5	146.8	125.4	116.4	108.9	February "
መጋቢት 2010	115.4	117.7	112.9	128.8	115.8	98.6	117.4	125.2	113.3	100.6	154.5	132.7	116.3	114.2	March "
ሚያዝያ 2010	110.8	117.3	103.6	97.9	114.6	95.7	118.5	152.2	113.5	100.2	154.3	125.5	116.3	117.1	April "
ግንቦት 2010	111.4	119.8	102.0	79.9	122.3	99.1	130.1	149.5	116.8	100.6	154.3	127.2	116.3	118.4	May "
ሰኔ 2010	115.4	122.0	108.1	99.4	133.2	99.0	118.0	124.2	112.1	101.1	154.3	124.9	126.6	131.3	June "
2011															2018/2019
ሐምሌ 2010	119.1	126.1	111.3	102.9	125.7	102.5	140.1	140.7	113.3	102.0	159.0	125.9	126.6	127.2	July 2018
ነሐሴ 2010	120.8	130.0	110.6	108.5	124.2	101.2	122.0	141.2	113.0	102.0	162.6	125.9	126.6	125.0	August "
መስከረም 2011	122.0	130.8	112.2	104.8	134.6	101.1	130.5	155.0	111.7	102.8	142.0	136.3	133.8	133.1	September "
ጥቅምት 2011	119.1	128.5	108.6	89.2	154.3	97.4	125.0	162.0	114.4	102.6	155.4	131.8	133.8	124.7	October "
ህዳር 2011	119.5	128.3	109.7	98.6	143.9	98.2	122.9	151.4	114.4	101.9	155.1	134.2	133.8	123.5	November "
ታህሳስ 2011	121.1	128.9	112.4	98.9	150.0	100.4	128.4	151.9	139.0	101.2	160.4	133.1	130.7	124.3	December "
ጥር 2011	125.8	131.3	119.8	120.9	151.1	104.3	126.6	142.8	139.0	102.9	162.4	134.2	130.7	121.9	January 2019
የካቲት 2011	120.9	131.3	109.4	93.0	147.1	98.4	126.1	144.4	139.1	103.1	154.9	134.2	130.7	124.0	February "
መጋቢት 2011	123.2	133.2	112.1	97.3	149.1	99.7	128.2	144.1	147.9	103.4	154.8	134.2	132.2	132.6	March "
ሚያዝያ 2011	126.7	135.3	117.2	113.4	149.4	100.1	130.8	153.1	140.2	103.6	157.1	135.8	132.2	139.6	April "
ግንቦት 2011	132.4	141.4	122.5	126.8	146.2	103.7	134.5	145.6	137.7	104.0	157.2	130.5	130.7	151.5	May "
ሰኔ 2011	138.5	145.2	131.1	129.8	161.0	117.1	137.3	138.5	152.0	103.7	159.8	152.4	140.1	155.5	June "
2012															2019/2020
ሐምሌ 2011	142.0	149.9	133.2	127.9	160.9	123.6	136.7	136.0	175.2	103.5	161.4	146.3	130.7	156.4	July 2019
ነሐሴ 2011	143.4	153.5	132.2	135.8	158.2	114.5	141.1	132.3	181.2	103.4	163.8	167.4	147.9	147.9	August "
መስከረም 2012	150.5	161.8	137.9	136.1	165.0	128.6	134.6	131.3	175.4	102.7	162.6	162.2	153.8	152.9	September "

ሠንጠረዥ 13ሀ፤ ጠቅላላ የሽያጭ ዋጋ መመዘኛ ኢንዱስትሪ በሥራ የተካተቱ ክፍሎች ለትግራይ ብሔራዊ ክልላዊ መንግስት
 ታህሳስ 2009 = 100

Table 13a: General Consumer Price Index and Its Components for Tigray National Regional State
 December 2016 = 100

ወርና ዓመት	ጠቅላላ ኢንዱስትሪ	ምግብና አልኮሎል ያልሆኑ መጠጦች	ምግብ ነጻ ያልሆኑ ኢንዱስትሪ	ምግብ ነጻ ያልሆኑ ደረጃዎች ክፍሎች Non-food Consumer Price Index Components											ወርና ዓመት
				መጠጥ ሲጃራና ትምባሆ	ልብስና መጫሚያ	የቤት ኪራይ የቤት መሥሪያ ዕቃዎች ውሃ ነጻጅና ሃይል	የቤት ማስገጫዎች የቤት ቁሳቁስና የቤት ሠራተኛ ደግዝ	ህክምና	ትራንስፖርት	መገናኛና ባህል	ትምህርት	ሬስቶራንትና ሆቴሎች	ሌሎች አገልግሎቶች		
Month an Year	General Index	Food and Non-Alcoholic Beverages	Non-Food Index	Alcoholic Beverages and Tobacco	Clothing and Footwear	Housing, Water, Electricity, Gas and Other Fuels	Furnishings, Household Equipment and Routine Maintenance of the House	Health	Transport	Communication	Recreation and Culture	Education	Restaurants and Hotels	Miscellaneous Goods and services	Month an Year
ታህሳስ 2009	100.0	100.0	100.0	100.0	100.0	100.0	100.0	100.0	100.0	100.0	100.0	100.0	100.0	100.0	December 2016
ሐምሌ 2009 - ሰኔ 2010	114.0	118.0	110.6	107.1	105.6	111.0	108.5	108.0	109.5	100.0	83.8	89.2	120.4	109.2	July 2017 - June 2018
ሐምሌ 2010 - ሰኔ 2011	136.5	145.4	128.9	124.1	123.4	132.0	126.8	133.1	112.2	100.0	93.2	109.5	144.1	123.5	July 2018 - June 2019
2010															2017/2018
ሐምሌ 2009	108.9	108.0	109.7	98.2	97.4	121.5	102.2	112.7	102.6	100.0	84.2	46.1	113.0	99.5	July 2017
ነሐሴ 2009	109.9	111.6	108.5	101.1	101.8	115.7	100.1	104.8	106.1	100.0	81.7	46.1	113.0	105.5	August "
መስከረም 2010	113.8	115.0	112.8	111.8	102.6	120.2	100.7	106.0	109.7	100.0	84.0	92.5	120.8	107.8	September "
ጥቅምት 2010	109.7	116.3	104.1	105.9	103.6	97.2	96.8	103.4	108.4	100.0	83.5	80.0	120.8	106.9	October "
ሀጻር 2010	112.0	116.1	108.6	111.2	100.7	106.4	109.9	112.0	109.0	100.0	81.9	94.4	120.8	106.3	November "
ታህሳስ 2010	110.2	112.7	108.0	106.9	100.8	107.9	106.2	104.3	109.3	100.0	81.2	88.4	117.6	109.2	December "
ጥር 2010	112.6	114.7	110.8	105.2	102.5	115.3	108.2	105.9	109.4	100.0	81.4	84.4	117.6	108.2	January 2018
የካቲት 2010	111.0	117.6	105.4	108.0	105.4	97.1	110.6	106.6	109.4	100.0	83.3	101.0	117.6	109.5	February "
መጋቢት 2010	117.7	125.2	111.4	101.4	108.6	110.4	115.6	104.9	110.0	100.0	83.7	75.3	123.4	107.2	March "
ሚያዝያ 2010	117.0	122.5	112.3	103.7	109.0	110.8	112.2	107.8	111.1	100.0	85.6	105.4	124.8	112.1	April "
ግንቦት 2010	120.7	126.5	115.8	104.8	117.4	113.5	119.4	110.6	114.7	100.0	87.4	145.6	124.8	118.8	May "
ሰኔ 2010	124.1	129.6	119.3	126.7	117.8	116.8	120.3	117.0	113.8	100.0	88.2	111.7	130.9	119.3	June "
2011															2018/2019
ሐምሌ 2010	126.1	133.9	119.6	128.9	112.6	116.9	122.8	150.1	112.9	100.0	85.6	54.0	130.9	119.4	July 2018
ነሐሴ 2010	126.3	131.6	121.8	126.6	117.7	125.5	120.5	121.2	113.5	100.0	89.3	54.0	130.9	113.4	August "
መስከረም 2011	130.9	141.6	121.9	110.4	114.8	124.4	118.0	127.2	112.5	100.0	87.8	112.4	134.7	124.8	September "
ጥቅምት 2011	132.7	144.4	122.8	112.1	120.3	124.9	124.0	123.8	109.7	100.0	90.2	119.1	134.7	119.4	October "
ሀጻር 2011	133.8	145.4	124.1	111.5	121.6	127.5	125.1	128.8	109.8	100.0	92.6	116.5	134.7	119.9	November "
ታህሳስ 2011	136.5	144.4	129.9	136.0	120.1	130.0	129.8	137.8	112.7	100.0	94.9	115.9	150.5	121.4	December "
ጥር 2011	136.0	143.9	129.3	110.7	126.5	130.6	128.0	132.0	110.8	100.0	97.3	124.1	151.0	120.7	January 2019
የካቲት 2011	135.4	143.6	128.4	128.4	127.5	124.1	128.0	140.7	117.5	100.0	94.6	121.9	151.0	123.4	February "
መጋቢት 2011	140.8	149.0	133.9	134.4	129.3	139.2	128.4	139.7	117.5	100.0	96.6	150.2	146.4	126.9	March "

ሠንጠረዥ 1ለ፤ ጠቅላላ የምግብ የሽግግር ዋጋ መመዘኛ ኢንዱክሽን በሥሩ የተካተቱ ክፍሎች በአገር አቀፍ ደረጃ

ታህሳስ 2009 = 100

Table 1b: General Food Consumer Price Index and Its Components at Country Level

December 2016 = 100

ወርና ዓመት	%ሀዕወ ስጫዎች											ወርና ዓመት
	ምግብና አልኮሎሊክ ያልሆኑ መጠጦች	ጳቦና ለህል	ሥጋ	ጸባብ	ጸባብና ስጋ	ጸባብና ስጋ	ጸባብና ስጋ	ጸባብና ስጋ	ጸባብና ስጋ	ጸባብና ስጋ	ጸባብና ስጋ	
Month an Year	Food and Non-Alcoholic Beverages	Bread and Cereals	Meat (ND)	Fish and Seafood	Milk, cheese and eggs (ND)	Oils and fats (ND)	Fruit (ND)	Vegetables	Sugar, jam, honey, chocolate.	Food products n.e.c. (ND)	Non-Alcoholic Beverages and coffee	Month an Year
ታህሳስ 2009	100.0	100.0	100.0	100.0	100.0	100.0	100.0	100.0	100.0	100.0	100.0	December 2016
ሐምሌ 2009 - ሰኔ 2010	118.0	126.7	121.0	104.3	114.7	96.9	129.1	115.3	96.4	129.5	106.2	July 2017 - June 2018
ሐምሌ 2009 - ሰኔ 2010	133.5	144.7	143.5	113.7	134.6	99.0	145.6	135.1	106.5	141.5	111.0	July 2018 - June 2019
2010												2017/2018
ሐምሌ 2009	112.0	119.2	112.5	100.7	107.4	99.5	115.9	110.1	94.8	121.9	99.5	July 2017
ነሐሴ 2009	112.7	123.5	113.6	101.9	108.0	100.6	118.3	106.4	94.1	121.4	99.5	August "
መስከረም 2010	116.9	127.9	115.3	100.6	110.1	101.4	124.3	114.1	94.2	122.8	104.9	September "
ጥቅምት 2010	117.4	128.6	114.3	102.2	109.8	99.5	125.4	114.6	94.9	124.3	106.9	October "
ህዳር 2010	116.9	127.6	116.0	102.6	113.2	93.1	130.3	112.4	97.4	124.6	110.9	November "
ታህሳስ 2010	115.4	120.8	116.8	107.9	113.5	98.1	130.9	114.4	95.4	126.2	107.6	December "
ጥር 2010	116.7	120.9	121.3	108.0	114.8	101.7	133.2	117.9	92.6	126.4	105.2	January 2018
የካቲት 2010	118.7	123.0	122.4	108.6	116.7	91.4	134.2	121.3	97.6	136.2	105.1	February "
መጋቢት 2010	120.6	127.0	125.2	86.6	115.3	92.3	135.8	121.9	101.3	137.8	105.4	March "
ሚያዝያ 2010	121.6	129.5	130.5	110.8	122.5	95.0	132.8	117.9	100.0	137.7	106.0	April "
ግንቦት 2010	122.3	134.7	130.5	110.9	121.7	94.9	134.1	113.1	96.1	137.6	109.5	May "
ሰኔ 2010	125.3	137.2	133.5	110.8	123.8	95.4	134.5	119.6	98.0	136.8	113.7	June "
2011												2018/2019
ሐምሌ 2010	127.1	139.6	136.5	110.9	124.5	94.1	131.8	123.4	95.9	134.6	116.3	July 2018
ነሐሴ 2010	128.2	139.8	135.0	110.1	128.1	96.9	133.3	123.3	105.6	139.3	115.6	August "
መስከረም 2011	129.4	139.8	139.4	115.4	130.8	96.6	134.1	127.6	104.8	136.7	115.9	September "
ጥቅምት 2011	128.6	139.7	136.8	115.4	131.4	98.2	140.7	123.7	106.1	138.1	115.4	October "
ህዳር 2011	127.8	139.9	136.9	116.9	128.2	96.2	140.1	123.1	104.0	137.9	111.9	November "
ታህሳስ 2011	128.6	140.4	137.6	110.4	129.9	98.0	142.2	126.1	105.7	137.5	109.1	December "
ጥር 2011	130.1	141.1	141.8	118.2	133.2	99.0	143.6	128.9	105.7	140.4	105.8	January 2019
የካቲት 2011	131.5	141.4	141.5	111.7	135.7	98.1	148.2	131.6	106.9	145.2	106.5	February "
መጋቢት 2011	134.3	143.8	142.6	116.0	137.0	97.0	152.0	140.4	107.6	143.9	107.2	March "
ሚያዝያ 2011	139.2	151.0	142.9	106.3	138.5	102.5	154.3	147.3	109.9	146.3	107.9	April "
ግንቦት 2011	147.6	156.8	164.6	119.5	147.5	105.1	162.4	163.2	112.7	148.7	109.4	May "
ሰኔ 2011	150.2	162.7	166.3	114.2	150.7	106.1	163.8	163.0	113.5	149.2	111.5	June "
2012												2019/2020
ሐምሌ 2011	152.6	171.1	166.7	119.2	145.5	113.5	165.9	158.3	116.0	151.1	113.7	July 2019
ነሐሴ 2011	157.6	177.0	169.8	113.4	149.1	103.4	169.1	169.7	116.8	156.0	116.9	August "
መስከረም 2012	159.5	178.6	174.6	111.1	154.8	106.6	171.2	173.7	113.2	152.1	117.6	September "
	23.3	27.7	25.3	-3.7	18.3	10.3	27.6	36.2	8.0	11.3	1.5	

ሠንጠረዥ 3ለ፤ ጠቅላላ የምግብ የሽግግር ዋጋ መመዘኛ ኢንዱክሽን በሥሩ የተካተቱ ክፍሎች ለአዲስ አበባ ከተማ አስተዳደር

ታህሳስ 2009 = 100

Table 3b: General Food Consumer Price Index and Its Components for Addis Ababa City Administration

December 2016 = 100

ወርና ዓመት	%ሀዕወ ስጋላት											ወርና ዓመት
	ምግብና አልኮሎል ያልሆኑ መጠጦች	ጳቦና ለህል	ሥጋ	አሳና የባህር ምግቦች	ወተት ለይብና ዕንቁላል	ዘይትና ቅባቶች	ፍራፍሬ	አትክልትና ጥራጥሬ	ሰኳር ማርና ጅኮሌት	ሌሎች ምግቦች	አልኮሎል ያልሆኑ መጠጦች	
Month an Year	Food and Non-Alcoholic Beverages	Bread and Cereals	Meat (ND)	Fish and Seafood	Milk, cheese and eggs (ND)	Oils and fats (ND)	Fruit (ND)	Vegetables	Sugar, jam, honey, chocolate.	Food products n.e.c. (ND)	Non-Alcoholic Beverages and coffee	Month an Year
ታህሳስ 2009	100.0	100.0	100.0	100.0	100.0	100.0	100.0	100.0	100.0	100.0	100.0	December 2016
ሐምሌ 2009 - ሰኔ 2010	112.6	112.8	118.1	103.3	110.7	110.9	136.6	107.5	100.0	126.6	104.3	July 2017 - June 2018
ሐምሌ 2009 - ሰኔ 2010	129.4	129.0	136.3	113.3	129.5	117.9	149.1	129.1	103.5	156.3	110.3	July 2018 - June 2019
2010												2017/2018
ሐምሌ 2009	107.3	108.0	112.5	106.8	107.1	108.9	130.1	109.2	100.0	85.3	95.5	July 2017
ነሐሴ 2009	108.0	108.8	112.5	103.8	102.4	109.5	131.6	110.4	99.9	85.9	100.3	August "
መስከረም 2010	112.2	112.8	118.8	95.1	107.3	110.2	141.2	114.7	100.0	88.5	105.3	September "
ጥቅምት 2010	111.6	113.7	114.0	99.4	105.1	109.1	133.2	115.7	100.0	89.6	105.4	October "
ህዳር 2010	109.1	113.2	115.3	98.4	104.7	108.8	130.9	98.6	100.0	112.3	105.8	November "
ታህሳስ 2010	110.2	111.5	115.0	97.4	106.9	109.4	133.5	106.2	100.0	110.1	106.1	December "
ጥር 2010	112.1	108.9	126.3	97.9	110.4	109.7	136.6	109.4	100.0	108.3	105.2	January 2018
የካቲት 2010	114.4	111.6	113.5	97.9	110.7	110.3	143.9	105.5	100.0	192.8	105.9	February "
መጋቢት 2010	112.7	113.0	111.9	105.4	109.4	110.7	140.4	103.7	100.0	165.9	104.5	March "
ሚያዝያ 2010	115.2	114.1	128.2	113.4	116.5	113.3	140.9	99.3	100.0	161.3	103.1	April "
ግንቦት 2010	117.4	119.4	124.2	112.3	121.8	115.1	140.0	102.0	100.0	159.6	106.9	May "
ሰኔ 2010	120.6	118.8	125.6	111.3	125.9	116.1	137.1	115.5	100.0	159.8	107.3	June "
2011												2018/2019
ሐምሌ 2010	123.8	122.6	130.0	112.3	121.8	115.2	134.1	121.7	100.0	158.9	109.4	July 2018
ነሐሴ 2010	123.7	124.9	127.1	109.1	124.6	116.0	135.5	118.9	100.1	160.6	107.9	August "
መስከረም 2011	128.1	126.7	133.0	106.1	129.5	116.9	136.5	128.4	100.0	164.9	110.7	September "
ጥቅምት 2011	122.7	124.4	126.9	106.2	131.3	114.4	141.7	115.5	100.0	155.8	108.7	October "
ህዳር 2011	122.7	126.0	128.7	116.0	127.4	116.8	136.9	113.2	100.0	147.6	110.4	November "
ታህሳስ 2011	125.8	126.2	128.1	108.8	128.2	117.1	136.8	124.0	100.0	160.8	109.8	December "
ጥር 2011	126.4	127.2	139.9	117.7	130.8	117.5	145.1	115.8	100.0	156.0	109.9	January 2019
የካቲት 2011	126.9	129.3	134.5	116.1	129.5	117.3	149.1	119.1	100.0	154.2	111.9	February "
መጋቢት 2011	129.1	132.5	131.8	124.4	125.7	117.2	161.1	128.1	100.0	154.4	106.8	March "
ሚያዝያ 2011	132.8	131.2	137.5	113.5	127.9	119.8	178.8	138.0	114.1	153.2	110.2	April "
ግንቦት 2011	144.5	135.4	159.7	109.7	135.7	123.6	168.6	163.0	114.1	154.7	113.6	May "
ሰኔ 2011	146.8	142.2	158.1	119.3	141.2	122.6	165.3	164.0	114.1	154.4	114.6	June "
2012												2019/2020
ሐምሌ 2011	149.1	150.4	161.6	154.5	137.6	127.7	173.5	155.3	114.1	159.5	115.9	July 2019
ነሐሴ 2011	157.4	159.7	160.4	112.6	139.8	132.8	176.9	177.2	114.1	165.1	114.7	August "
መስከረም 2012	160.1	156.7	171.4	131.8	150.2	133.2	179.0	182.2	114.1	163.5	117.5	September "

ሠንጠረዥ 4ለ፤ ጠቅላላ የምግብ የሽግግር ዋጋ መመዘኛ ኢንዱክስ በሥሩ የተካተቱ ክፍሎች ለአፋር ብሔራዊ ክልላዊ መንግስት

ታህሳስ 2009 = 100

Table 4b: General Food Consumer Price Index and Its Components for Afar National Regional State

December 2016 = 100

ወርና ዓመት	%ሀዕወ ስጫዎች											ወርና ዓመት
	ምግብና አልኮሎሊክ ያልሆኑ መጠጦች	ጳቦና ለህል	ጾታ (ND)	ፍሰትና ስጋ	እሳና የባህር ምግቦች	ወተት ለይብና ዕንቁላል	ዘይትና ቅባቶች	ፍራፍሬ	አትክልትና ጥራጥራ	ስኳር ማርና ጅኮሌት	ሌሎች ምግቦች	
Month an Year	Food and Non-Alcoholic Beverages	Bread and Cereals	Meat (ND)	Fish and Seafood	Milk, cheese and eggs (ND)	Oils and fats (ND)	Fruit (ND)	Vegetables	Sugar, jam, honey, chocolate.	Food products n.e.c. (ND)	Non-Alcoholic Beverages and coffee	Month an Year
ታህሳስ 2009	100.0	100.0	100.0	100.0	100.0	100.0	100.0	100.0	100.0	100.0	100.0	December 2016
ሐምሌ 2009 - ሰኔ 2010	114.7	118.2	122.3	130.1	103.7	108.6	107.9	120.2	110.2	139.9	111.7	July 2017 - June 2018
ሐምሌ 2009 - ሰኔ 2010	127.7	139.8	158.9	161.6	112.7	100.1	119.8	147.4	89.5	104.6	116.7	July 2018 - June 2019
2010												2017/2018
ሐምሌ 2009	107.8	103.8	102.2	102.2	103.4	113.9	102.6	126.3	100.5	137.7	103.0	July 2017
ነሐሴ 2009	109.5	111.7	103.8	114.4	103.3	119.0	102.5	114.1	99.9	137.5	102.8	August "
መስከረም 2010	112.1	118.3	105.2	112.1	97.6	114.4	103.1	121.0	108.2	138.4	108.0	September "
ጥቅምት 2010	115.7	118.5	128.1	111.8	99.2	95.5	105.2	139.0	111.3	138.6	112.0	October "
ሀገር 2010	116.9	119.8	128.5	111.8	105.4	109.9	104.6	121.0	122.2	138.9	112.8	November "
ታህሳስ 2010	115.0	120.5	98.7	125.4	105.6	116.0	107.6	119.1	112.2	140.5	113.3	December "
ጥር 2010	118.1	121.3	128.2	127.0	105.9	112.4	111.2	121.0	124.8	140.4	115.3	January 2018
የካቲት 2010	117.1	119.8	128.1	144.9	106.4	115.2	110.3	114.8	127.9	142.7	112.3	February "
መጋቢት 2010	115.8	120.4	127.4	140.1	101.3	113.1	106.0	117.5	123.6	141.0	111.1	March "
ሚያዝያ 2010	113.9	115.4	129.4	157.7	104.6	115.3	106.6	107.6	121.4	139.6	112.5	April "
ግንቦት 2010	111.4	118.5	128.4	157.1	96.2	92.6	118.0	112.3	84.6	143.1	119.9	May "
ሰኔ 2010	123.2	130.0	159.2	157.1	115.7	86.5	116.9	129.0	86.0	140.3	117.1	June "
2011												2018/2019
ሐምሌ 2010	122.1	133.4	129.9	154.7	104.5	102.6	124.3	138.4	81.1	140.4	120.6	July 2018
ነሐሴ 2010	123.3	136.0	129.5	155.1	105.5	102.4	123.0	144.3	81.1	125.7	120.4	August "
መስከረም 2011	127.1	134.4	160.8	160.3	107.1	112.1	122.0	161.4	81.5	121.6	116.7	September "
ጥቅምት 2011	125.8	133.6	158.0	157.8	115.6	105.0	121.7	140.2	81.1	123.6	117.1	October "
ሀገር 2011	122.8	137.2	149.7	166.1	109.6	102.8	118.4	131.3	81.1	89.4	116.7	November "
ታህሳስ 2011	124.5	135.9	161.2	159.0	109.9	101.3	117.3	144.1	81.1	91.6	115.7	December "
ጥር 2011	126.8	137.4	159.1	164.2	121.5	101.3	118.6	135.3	93.5	89.8	113.0	January 2019
የካቲት 2011	124.7	138.3	165.3	165.3	110.5	102.0	117.3	132.1	90.3	93.7	113.2	February "
መጋቢት 2011	126.7	140.1	165.2	160.7	110.1	101.7	113.4	145.9	92.2	94.0	111.3	March "
ሚያዝያ 2011	128.1	144.9	168.6	162.2	109.9	89.7	115.0	143.6	92.2	95.0	115.2	April "
ግንቦት 2011	138.1	150.2	179.3	164.9	120.0	90.1	121.5	179.8	105.1	97.4	116.7	May "
ሰኔ 2011	142.3	155.7	180.6	168.8	128.5	90.9	125.1	172.9	113.9	93.3	124.1	June "
2012												2019/2020
ሐምሌ 2011	146.4	162.9	192.2	170.6	112.2	153.8	127.3	178.2	125.4	99.2	121.1	July 2019
ነሐሴ 2011	151.9	162.6	191.2	171.7	137.3	142.9	127.4	184.6	113.8	100.3	125.2	August "
መስከረም 2012	156.9	176.9	192.6	171.4	114.4	195.5	130.8	202.7	112.9	104.8	124.6	September "

ሠንጠረዥ 5ለ፤ ጠቅላላ የምግብ የሽግግር ዋጋ መመዘኛ ኢንዱክሽን በሥሩ የተካተቱ ክፍሎች ለአግራ ብሔራዊ ክልላዊ መንግስት

ታህሳስ 2009 = 100

Table 5b: General Food Consumer Price Index and Its Components for Amhara National Regional State

December 2016 = 100

ወርና ዓመት	%ሀዕወ ስጋላት											ወርና ዓመት
	ምግብና አልኮሎሊክ ያልሆኑ መጠጦች	ጳቦና ለህል	ሥጋ	አሳና የባህር ምግቦች	ወተት ለይብና ዕንቁላል	ዘይትና ቅባቶች	ፍራፍሬ	አትክልትና ጥራጥሬ	ሰኳር ማርና ጅኮሌት	ሌሎች ምግቦች	አልኮሎሊክ ያልሆኑ መጠጦች	
Month an Year	Food and Non-Alcoholic Beverages	Bread and Cereals	Meat (ND)	Fish and Seafood	Milk, cheese and eggs (ND)	Oils and fats (ND)	Fruit (ND)	Vegetables	Sugar, jam, honey, chocolate.	Food products n.e.c. (ND)	Non-Alcoholic Beverages and coffee	Month an Year
ታህሳስ 2009	100.0	100.0	100.0	0.0	100.0	100.0	100.0	100.0	100.0	100.0	100.0	December 2016
ሐምሌ 2009 - ሰኔ 2010	122.0	132.4	126.2	0.0	127.8	105.1	132.9	107.7	102.7	130.0	105.1	July 2017 - June 2018
ሐምሌ 2009 - ሰኔ 2010	138.2	155.7	152.2	0.0	144.9	108.5	142.2	130.7	106.5	135.2	108.6	July 2018 - June 2019
ሐምሌ 2009	118.6	128.0	116.1	0.0	117.3	102.6	127.2	104.5	102.8	130.7	101.2	July 2017
ነሐሴ 2009	116.8	128.2	116.2	0.0	116.1	102.6	129.6	99.5	102.5	127.1	101.8	August "
መስከረም 2010	119.2	128.0	117.4	0.0	122.0	103.7	129.4	107.9	103.1	128.7	102.0	September "
ጥቅምት 2010	118.0	123.5	112.9	0.0	116.5	103.5	125.5	109.6	102.4	129.1	104.7	October "
ሀጃር 2010	120.8	125.0	116.0	0.0	139.3	103.8	129.0	117.4	101.8	128.6	105.4	November "
ታህሳስ 2010	121.1	126.4	119.0	0.0	127.6	104.2	130.6	113.6	101.4	131.0	106.4	December "
ጥር 2010	120.8	131.6	127.1	0.0	121.6	104.9	135.6	104.8	101.2	128.4	105.9	January 2018
የካቲት 2010	121.9	131.2	132.2	0.0	129.8	106.2	131.6	103.5	103.2	131.5	106.0	February "
መጋቢት 2010	123.5	137.2	136.7	0.0	133.6	107.1	137.3	101.3	103.6	130.5	106.1	March "
ሚያዝያ 2010	126.3	141.1	141.0	0.0	134.5	107.8	136.9	106.0	103.5	131.4	106.5	April "
ግንቦት 2010	127.6	144.8	137.7	0.0	134.9	107.7	140.3	109.7	103.3	129.8	107.6	May "
ሰኔ 2010	129.3	143.2	142.6	0.0	140.1	107.5	141.7	114.0	103.3	132.7	107.5	June "
ሐምሌ 2010	134.7	150.9	147.1	0.0	139.1	108.0	131.8	133.4	103.2	126.3	110.1	July 2018
ነሐሴ 2010	134.9	149.6	142.6	0.0	140.1	107.5	141.7	131.9	103.3	132.7	107.5	August "
መስከረም 2011	132.2	150.8	147.1	0.0	139.1	108.0	131.8	121.8	103.2	126.3	110.1	September "
ጥቅምት 2011	132.7	148.8	145.4	0.0	142.2	106.9	131.6	120.2	104.3	133.6	108.2	October "
ሀጃር 2011	132.4	149.5	144.2	0.0	145.8	106.8	135.5	119.6	103.6	132.5	107.2	November "
ታህሳስ 2011	133.4	150.5	143.8	0.0	143.4	107.3	140.0	123.9	103.7	131.6	107.8	December "
ጥር 2011	134.8	153.0	149.4	0.0	141.2	107.6	137.1	123.2	103.7	132.5	108.7	January 2019
የካቲት 2011	135.9	152.5	145.9	0.0	145.2	107.3	145.6	126.4	103.5	136.1	108.8	February "
መጋቢት 2011	139.2	155.2	150.7	0.0	144.4	108.5	145.7	135.6	103.9	136.6	107.7	March "
ሚያዝያ 2011	141.2	163.6	147.3	0.0	142.8	110.1	150.3	126.0	111.3	144.5	106.2	April "
ግንቦት 2011	151.4	165.8	182.7	0.0	157.5	111.6	158.6	150.8	117.8	145.6	109.3	May "
ሰኔ 2011	155.3	178.0	180.4	0.0	157.8	112.2	156.6	155.0	116.9	143.6	111.0	June "
2012												2019/2020
ሐምሌ 2011	158.1	187.4	174.8	0.0	164.4	113.7	178.8	152.7	119.6	147.8	108.1	July 2019
ነሐሴ 2011	163.4	191.2	178.3	0.0	159.0	115.6	182.7	163.4	120.1	153.2	111.4	August "
መስከረም 2012	162.7	191.9	183.7	0.0	170.2	115.9	177.7	163.6	121.9	145.9	111.8	September "

ሠንጠረዥ 6ለ፤ ጠቅላላ የምግብ የሽግግር ዋጋ መመዘኛ ኢንዱክሽን በሥሩ የተካተቱ ክፍሎች ለቤ/ጉሙዝ ብሔራዊ ክልላዊ መንግስት
 ታህሳስ 2009 = 100

Table 6b: General Food Consumer Price Index and Its Components for Beneshangul-Gumuz National Regional State
 December 2016 = 100

ወርና ዓመት	%ሀዕወ ስጫዎች											ወርና ዓመት
	ምግብና አልኮሎሊክ ያልሆኑ መጠጦች	ጳቦትና ለህል	ሥጋ	ጳቦት (ND)	ፍሰትና ባህር ምግቦች	ወተት አይብና ዕንቁላል	ዘይትና ቅባቶች	ፍራፍሬ	አትክልትና ጥራጥራ	ስኳር ማርና ጭካሌት	ሌሎች ምግቦች	
Month an Year	Food and Non-Alcoholic Beverages	Bread and Cereals	Meat (ND)	Fish and Seafood	Milk, cheese and eggs (ND)	Oils and fats (ND)	Fruit (ND)	Vegetables	Sugar, jam, honey, chocolate.	Food products n.e.c. (ND)	Non-Alcoholic Beverages and coffee	Month an Year
ታህሳስ 2009	100.0	100.0	100.0	100.0	100.0	100.0	100.0	100.0	100.0	100.0	100.0	December 2016
ሐምሌ 2009 - ሰኔ 2010	120.1	140.8	123.4	117.3	107.4	108.7	97.6	113.8	110.2	125.7	95.6	July 2017 - June 2018
ሐምሌ 2009 - ሰኔ 2010	133.8	149.3	149.3	122.5	114.8	113.4	140.6	135.1	112.8	144.7	101.7	July 2018 - June 2019
2010												2017/2018
ሐምሌ 2009	112.5	122.7	117.0	96.6	108.4	105.5	88.0	119.5	108.7	91.3	93.6	July 2017
ነሐሴ 2009	120.0	150.4	121.1	111.8	107.7	106.0	89.5	117.2	110.9	85.1	92.2	August "
መስከረም 2010	121.0	155.3	120.5	111.8	106.2	108.2	92.9	116.3	108.0	85.8	90.4	September "
ጥቅምት 2010	122.0	150.1	122.7	120.8	105.7	106.8	96.5	118.6	108.3	105.8	93.8	October "
ህዳር 2010	124.4	157.2	115.5	120.8	105.7	106.6	110.7	116.6	112.4	117.8	97.0	November "
ታህሳስ 2010	118.1	137.1	118.5	120.8	106.9	107.3	97.8	114.7	111.2	114.8	97.0	December "
ጥር 2010	118.8	127.1	123.9	120.8	107.0	109.7	69.1	122.8	111.7	134.6	95.6	January 2018
የካቲት 2010	120.0	132.4	124.1	120.8	107.8	110.2	73.8	112.3	110.7	167.7	94.4	February "
መጋቢት 2010	120.8	138.8	119.2	120.8	106.6	108.3	105.0	110.7	112.5	158.4	96.4	March "
ሚያዝያ 2010	120.9	139.9	132.5	120.8	108.3	112.1	93.1	101.6	110.9	163.3	97.2	April "
ግንቦት 2010	119.5	139.0	134.6	120.8	108.2	110.8	122.8	102.6	109.2	140.1	96.6	May "
ሰኔ 2010	123.2	140.2	131.3	120.8	110.0	112.4	131.7	112.2	108.2	143.3	102.6	June "
2011												2018/2019
ሐምሌ 2010	127.8	145.7	132.4	120.8	110.1	105.3	96.6	122.0	110.0	142.6	113.2	July 2018
ነሐሴ 2010	128.2	146.8	140.3	116.2	111.1	99.6	115.8	128.8	109.1	127.5	105.7	August "
መስከረም 2011	131.5	144.4	159.3	120.8	113.7	114.2	115.1	134.2	110.7	126.7	101.4	September "
ጥቅምት 2011	128.9	147.7	143.7	120.8	112.8	107.4	116.0	128.2	110.7	131.6	99.7	October "
ህዳር 2011	128.0	145.0	144.4	120.8	113.7	111.0	120.3	123.6	111.8	135.5	101.0	November "
ታህሳስ 2011	133.6	153.0	144.6	120.8	116.5	112.0	120.3	135.2	111.8	138.5	101.5	December "
ጥር 2011	134.6	154.2	146.9	120.8	113.6	114.7	121.1	132.9	109.4	149.9	102.2	January 2019
የካቲት 2011	132.8	149.6	147.3	120.8	115.6	114.0	194.9	124.3	109.4	162.3	102.1	February "
መጋቢት 2011	131.0	147.3	149.8	120.8	117.0	123.4	188.6	123.5	109.4	150.4	93.6	March "
ሚያዝያ 2011	135.3	146.8	144.5	120.8	116.7	121.9	170.3	139.7	114.4	156.8	99.0	April "
ግንቦት 2011	142.0	149.6	164.6	129.1	118.2	117.5	165.9	157.6	120.9	153.4	99.1	May "
ሰኔ 2011	151.3	161.9	174.0	138.0	118.4	119.5	162.1	171.7	126.5	160.5	102.6	June "
2012												2019/2020
ሐምሌ 2011	160.2	182.8	177.2	138.0	118.6	118.2	134.1	180.6	126.5	168.2	103.9	July 2019
ነሐሴ 2011	163.1	181.1	178.3	138.0	120.1	122.5	113.3	198.7	126.5	154.6	101.2	August "
መስከረም 2012	170.2	195.9	183.1	138.0	122.1	133.6	130.6	203.4	124.4	157.5	98.9	September "

ሠንጠረዥ 7ለ፤ ጠቅላላ የምግብ የሽግግር ዋጋ መመዘኛ ኢንዱክሽን በሥሩ የተካተቱ ክፍሎች ለድሬዳዋ ከተማ አስተዳደር

ታህሳስ 2009 = 100

Table 7b: General Food Consumer Price Index and Its Components for Dire Dawa City Administration
December 2016 = 100

ወርና ዓመት	%ሀዕወ ስጫዎች											ወርና ዓመት
	ምግብና አልኮሎሊክ ያልሆኑ መጠጦች	ጳቦና ለህል	ጾታ	ሰፊ	አሳና የባህር ምግቦች	ወተት ለይብና ዕንቁላል	ዘይትና ቅባቶች	ፍራፍሬ	አትክልትና ጥራጥሬ	ስኳር ግርና ጅኬሊት	ሌሎች ምግቦች	
Month an Year	Food and Non-Alcoholic Beverages	Bread and Cereals	Meat (ND)	Fish and Seafood	Milk, cheese and eggs (ND)	Oils and fats (ND)	Fruit (ND)	Vegetables	Sugar, jam, honey, chocolate.	Food products n.e.c. (ND)	Non-Alcoholic Beverages and coffee	Month an Year
ታህሳስ 2009	100.0	100.0	100.0	100.0	100.0	100.0	100.0	100.0	100.0	100.0	100.0	December 2016
ሐምሌ 2009 - ሰኔ 2010	113.5	112.9	114.8	123.0	115.4	104.7	132.5	113.7	105.9	129.4	114.1	July 2017 - June 2018
ሐምሌ 2009 - ሰኔ 2010	136.7	139.6	144.2	137.4	134.1	110.8	147.8	135.6	98.8	200.1	116.0	July 2018 - June 2019
2010												2017/2018
ሐምሌ 2009	106.0	103.5	104.6	98.4	107.0	102.5	111.4	108.4	107.5	117.5	109.7	July 2017
ነሐሴ 2009	107.3	107.0	106.4	101.6	109.5	102.5	124.2	108.0	110.0	105.1	112.0	August "
መስከረም 2010	104.2	105.6	107.9	103.1	118.6	102.4	138.1	94.3	110.0	110.5	107.4	September "
ጥቅምት 2010	118.2	110.6	111.8	113.9	112.4	102.5	125.8	143.8	112.5	105.1	118.6	October "
ሀገር 2010	109.0	112.8	110.0	131.5	112.5	103.5	125.0	96.9	110.0	132.3	112.6	November "
ታህሳስ 2010	107.3	110.7	109.2	132.3	111.6	103.5	135.4	99.7	110.0	104.4	110.9	December "
ጥር 2010	110.6	111.6	113.2	132.3	112.9	103.5	139.5	109.0	110.0	105.1	116.2	January 2018
የካቲት 2010	113.5	112.3	112.9	136.9	111.9	105.7	142.7	118.1	117.3	105.4	117.7	February "
መጋቢት 2010	112.7	113.9	113.3	133.8	120.1	106.4	147.0	113.6	100.0	105.4	112.0	March "
ሚያዝያ 2010	113.8	115.4	114.0	124.9	110.9	106.4	131.9	116.9	100.0	104.1	118.0	April "
ግንቦት 2010	124.4	123.2	136.7	133.8	127.4	109.1	145.7	110.1	90.0	230.8	118.9	May "
ሰኔ 2010	134.5	128.6	137.9	133.8	129.6	108.7	123.8	145.3	93.3	227.4	114.8	June "
2011												2018/2019
ሐምሌ 2010	136.6	130.8	130.7	133.8	130.5	110.1	135.1	149.2	95.0	229.1	124.7	July 2018
ነሐሴ 2010	132.6	131.3	134.6	133.8	129.2	110.2	124.0	131.1	95.0	228.3	121.2	August "
መስከረም 2011	132.3	129.3	141.7	132.3	134.5	108.6	129.3	138.1	95.0	203.2	110.3	September "
ጥቅምት 2011	129.6	134.1	138.2	135.3	132.4	108.7	129.3	120.5	95.0	199.1	109.8	October "
ሀገር 2011	129.2	135.2	138.2	128.5	131.6	109.1	147.2	118.3	95.0	189.5	111.2	November "
ታህሳስ 2011	128.6	138.7	138.2	131.5	129.0	109.1	145.7	113.4	95.0	177.0	107.0	December "
ጥር 2011	131.7	139.4	140.1	133.1	131.9	111.3	153.4	119.9	95.0	182.7	117.0	January 2019
የካቲት 2011	133.5	141.7	140.1	135.3	130.8	111.6	160.6	120.5	95.0	195.8	119.4	February "
መጋቢት 2011	136.1	143.8	140.1	135.3	131.6	109.2	160.6	127.1	95.0	200.2	122.1	March "
ሚያዝያ 2011	141.9	140.1	140.1	134.6	127.2	112.7	165.3	156.1	110.0	198.1	120.8	April "
ግንቦት 2011	154.5	152.4	173.1	158.5	147.6	118.5	168.4	173.1	110.0	193.8	112.5	May "
ሰኔ 2011	154.3	159.0	175.1	156.9	152.3	110.1	155.0	159.6	110.0	204.0	115.9	June "
2012												2019/2020
ሐምሌ 2011	157.0	164.4	177.0	151.5	152.8	110.2	156.5	158.6	110.0	214.5	115.3	July 2019
ነሐሴ 2011	162.5	170.9	180.9	156.8	159.8	110.1	154.6	169.5	106.6	214.1	113.4	August "
መስከረም 2012	168.3	164.7	175.1	156.9	155.0	115.7	161.5	200.2	110.0	217.6	133.1	September "

ሠንጠረዥ 8ለ፤ ጠቅላላ የምግብ የሽግግር ዋጋ መመዘኛ ኢንዱክሽን በሥሩ የተካተቱ ክፍሎች ለጋምቤላ ብሔራዊ ክልላዊ መንግስት
 ታህሳስ 2009 = 100

Table 8b: General Food Consumer Price Index and Its Components for Gambella National Regional State
 December 2016 = 100

ወርና ዓመት	%ሀዕወ ማዕከላዊ ዕቃዎች											ወርና ዓመት
	ምግብና አልኮሎሊክ ያልሆኑ መጠጦች	ጳቦት ለህል	ጾታ	ሰፊ	አሳና የባህር ምግቦች	ወተት አይብና ዕንቁላል	ዘይትና ቅባቶች	ፍራፍሬ	አትክልትና ጥራጥራ	ሰኳር ማርና ጭካኔ	ሌሎች ምግቦች	
Month an Year	Food and Non-Alcoholic Beverages	Bread and Cereals	Meat (ND)	Fish and Seafood	Milk, cheese and eggs (ND)	Oils and fats (ND)	Fruit (ND)	Vegetables	Sugar, jam, honey, chocolate.	Food products n.e.c. (ND)	Non-Alcoholic Beverages and coffee	Month an Year
ታህሳስ 2009	100.0	100.0	100.0	100.0	100.0	100.0	100.0	100.0	100.0	100.0	100.0	December 2016
ሐምሌ 2009 - ሰኔ 2010	112.9	127.7	118.0	101.4	97.1	110.1	89.2	99.9	99.0	135.4	103.9	July 2017 - June 2018
ሐምሌ 2009 - ሰኔ 2010	129.8	141.5	153.4	110.1	131.5	122.5	117.0	114.4	96.8	143.0	119.1	July 2018 - June 2019
2010												2017/2018
ሐምሌ 2009	109.5	131.5	107.9	100.0	90.2	105.5	46.5	96.4	91.8	123.6	94.7	July 2017
ነሐሴ 2009	111.2	132.7	107.9	100.0	90.7	98.5	85.8	96.8	93.9	135.3	101.3	August "
መስከረም 2010	114.4	139.9	108.0	100.0	98.4	102.2	81.0	97.0	92.5	135.3	100.2	September "
ጥቅምት 2010	110.7	122.8	122.3	100.0	97.0	108.4	81.3	97.6	98.9	132.3	103.5	October "
ሀጻር 2010	109.7	118.3	110.3	100.0	95.3	100.1	85.0	102.9	124.1	135.2	104.4	November "
ታህሳስ 2010	107.6	113.2	109.8	106.9	89.5	111.1	82.5	102.7	103.9	133.9	102.6	December "
ጥር 2010	107.4	117.6	121.2	106.9	93.4	119.8	86.3	87.1	95.7	134.0	102.5	January 2018
የካቲት 2010	111.6	119.9	119.8	106.9	98.0	104.5	84.9	104.3	100.0	138.8	104.4	February "
መጋቢት 2010	111.1	121.3	113.4	75.3	98.0	116.1	111.4	105.5	97.1	140.1	103.2	March "
ሚያዝያ 2010	116.9	129.9	126.8	106.9	98.2	117.0	99.4	106.0	97.1	138.7	106.8	April "
ግንቦት 2010	119.5	136.8	131.3	106.9	96.8	118.4	141.8	103.0	95.8	139.0	110.4	May "
ሰኔ 2010	125.3	148.8	136.9	106.9	119.3	119.6	85.0	100.1	97.3	139.0	113.2	June "
2011												2018/2019
ሐምሌ 2010	129.0	154.0	136.7	106.9	114.3	118.6	147.4	107.6	95.8	138.8	118.3	July 2018
ነሐሴ 2010	127.5	147.2	137.7	106.9	123.1	117.2	139.8	106.8	95.8	127.0	126.7	August "
መስከረም 2011	127.0	143.6	138.7	114.3	125.1	121.6	78.4	107.0	95.8	140.7	122.5	September "
ጥቅምት 2011	124.4	130.8	147.5	114.3	125.0	119.0	78.4	110.6	95.8	147.7	121.0	October "
ሀጻር 2011	125.6	137.5	150.0	114.3	126.2	120.9	79.5	102.8	95.8	149.5	122.9	November "
ታህሳስ 2011	124.9	124.2	158.9	106.9	126.4	119.0	78.5	120.4	95.8	146.1	121.1	December "
ጥር 2011	125.2	126.7	161.6	115.7	135.6	122.8	77.8	114.2	95.0	133.1	117.7	January 2019
የካቲት 2011	128.7	134.8	164.8	106.9	141.4	122.8	119.2	112.7	98.5	140.9	116.1	February "
መጋቢት 2011	133.3	143.8	160.4	111.4	144.5	127.1	132.5	114.0	98.5	149.5	119.6	March "
ሚያዝያ 2011	130.2	139.4	150.7	100.0	138.7	125.2	148.8	116.4	95.0	147.5	119.7	April "
ግንቦት 2011	140.2	158.3	163.4	117.1	138.4	126.6	156.9	128.1	100.0	147.4	110.1	May "
ሰኔ 2011	141.4	157.2	170.6	106.9	139.6	128.8	167.5	132.1	100.0	147.4	113.9	June "
2012												2019/2020
ሐምሌ 2011	148.7	175.8	170.7	106.9	141.9	135.4	172.2	136.0	107.6	147.1	108.4	July 2019
ነሐሴ 2011	150.1	175.2	171.0	106.9	142.3	136.5	177.0	141.8	107.6	149.4	109.7	August "
መስከረም 2012	148.8	173.9	169.0	100.0	131.5	126.5	162.3	143.9	112.9	160.5	113.5	September "

ሠንጠረዥ 9ለ፤ ጠቅላላ የምግብ የሽግግር ዋጋ መመዘኛ ኢንዱክሽን በሥሩ የተካተቱ ክፍሎች ለሐረር ብሔራዊ ክልላዊ መንግስት

ታህሳስ 2009 = 100

Table 9b: General Food Consumer Price Index and Its Components for Harari National Regional State

December 2016 = 100

ወርና ዓመት	%ሀዕው ማህል											ወርና ዓመት
	ምግብና አልኮሎሊክ ያልሆኑ መጠጦች	ጳቦና ለህል	ሥጋ	አሳና የባህር ምግቦች	ወተት አይብና ዕንቁላል	ዘይትና ቅባቶች	ፍራፍሬ	አትክልትና ጥራጥራ	ሰኳር ማርና ጅኮሌት	ሌሎች ምግቦች	አልኮሎሊክ ያልሆኑ መጠጦች	
Month an Year	Food and Non-Alcoholic Beverages	Bread and Cereals	Meat (ND)	Fish and Seafood	Milk, cheese and eggs (ND)	Oils and fats (ND)	Fruit (ND)	Vegetables	Sugar, jam, honey, chocolate.	Food products n.e.c. (ND)	Non-Alcoholic Beverages and coffee	Month an Year
ታህሳስ 2009	100.0	100.0	100.0	100.0	100.0	100.0	100.0	100.0	100.0	100.0	100.0	December 2016
ሐምሌ 2009 - ሰኔ 2010	111.9	116.5	106.4	0.0	111.3	116.6	146.2	103.5	109.8	115.5	98.2	July 2017 - June 2018
ሐምሌ 2009 - ሰኔ 2010	128.0	135.3	127.5	0.0	136.1	114.0	140.3	120.2	110.3	132.5	100.3	July 2018 - June 2019
2010												2017/2018
ሐምሌ 2009	108.5	109.0	106.2	0.0	108.0	128.8	131.5	101.7	116.3	110.5	95.65	July 2017
ነሐሴ 2009	109.9	112.6	106.1	0.0	107.5	137.9	137.8	97.5	112.7	110.5	97.99	August "
መስከረም 2010	113.9	117.1	103.2	0.0	109.7	140.9	160.0	105.7	115.0	109.8	104.78	September "
ጥቅምት 2010	117.0	118.7	102.6	0.0	108.7	112.3	156.6	133.2	116.3	109.0	104.68	October "
ህዳር 2010	108.0	116.3	102.9	0.0	107.8	109.0	157.2	91.8	107.1	108.2	90.42	November "
ታህሳስ 2010	106.7	114.9	105.0	0.0	105.1	109.9	144.3	85.5	107.1	112.7	97.14	December "
ጥር 2010	108.2	113.4	103.8	0.0	106.7	110.3	157.8	100.4	105.7	105.4	93.94	January 2018
የካቲት 2010	111.7	114.6	100.9	0.0	107.3	109.4	145.5	116.4	108.5	119.9	95.81	February "
መጋቢት 2010	110.5	114.9	101.0	0.0	122.5	109.4	147.9	99.0	105.7	119.3	98.22	March "
ሚያዝያ 2010	108.8	113.7	106.5	0.0	113.4	110.3	148.6	92.6	108.5	118.7	98.18	April "
ግንቦት 2010	116.5	126.5	118.0	0.0	114.4	110.4	131.9	94.9	107.6	130.8	101.01	May "
ሰኔ 2010	122.6	126.9	120.2	0.0	124.7	111.2	135.9	123.5	107.5	131.2	100.03	June "
2011												2018/2019
ሐምሌ 2010	124.9	126.9	120.6	0.0	131.7	111.3	109.1	135.2	107.5	125.2	103.26	July 2018
ነሐሴ 2010	123.9	130.3	120.2	0.0	131.0	114.0	129.1	116.9	107.5	134.2	101.90	August "
መስከረም 2011	121.6	130.1	123.8	0.0	127.5	113.8	134.8	103.7	105.7	129.8	102.44	September "
ጥቅምት 2011	122.9	134.5	125.2	0.0	132.4	114.0	128.5	96.8	107.6	130.3	100.14	October "
ህዳር 2011	123.8	133.6	121.1	0.0	132.4	112.3	127.9	110.3	107.6	126.7	97.81	November "
ታህሳስ 2011	124.2	137.0	121.2	0.0	131.7	111.4	130.6	104.5	109.4	126.0	96.55	December "
ጥር 2011	126.9	138.8	120.3	0.0	132.6	111.4	130.6	113.9	109.4	131.1	99.10	January 2019
የካቲት 2011	124.5	137.0	118.0	0.0	132.9	113.1	144.2	104.6	108.5	128.2	99.53	February "
መጋቢት 2011	126.3	133.9	120.3	0.0	141.7	116.7	138.0	114.1	109.4	133.2	100.16	March "
ሚያዝያ 2011	131.9	134.1	129.9	0.0	132.2	114.4	160.7	143.3	116.8	141.4	99.27	April "
ግንቦት 2011	140.8	144.6	156.7	0.0	140.6	117.5	173.0	145.5	116.8	138.1	100.79	May "
ሰኔ 2011	143.8	142.7	152.3	0.0	166.1	117.5	177.0	153.7	116.8	145.4	102.17	June "
2012												2019/2020
ሐምሌ 2011	144.6	150.4	152.5	0.0	154.8	115.3	157.0	148.1	114.0	145.0	101.68	July 2019
ነሐሴ 2011	155.2	162.4	160.1	0.0	162.7	117.3	178.1	166.0	116.8	150.3	107.60	August "
መስከረም 2012	161.8	170.1	159.1	0.0	162.4	124.0	176.5	180.7	134.9	150.8	109.80	September "

ሠንጠረዥ 10ለ፤ ጠቅላላ የምግብ የሽግግር ዋጋ መመዘኛ ኢንዱስትሪ በሥሩ የተካተቱ ክፍሎች ለአርጲያ ብሔራዊ ክልላዊ መንግስት
 ታህሳስ 2009 = 100

Table 10b: General Food Consumer Price Index and Its Components for Oromia National Regional State
 December 2016 = 100

ወርና ዓመት	%ሀዕወ ስጋላት											ወርና ዓመት
	ምግብና አልኮሎሊክ ያልሆኑ መጠጦች	ጳቦና ለህል	ጾታ	አሳና የባህር ምግቦች	ወተት ለይብና ዕንቁላል	ዘይትና ቅባቶች	ፍራፍሬ	አትክልትና ጥራጥራ	ስኳር ማርና ጅኮሊት	ሌሎች ምግቦች	አልኮሎሊክ ያልሆኑ መጠጦች	
Month an Year	Food and Non-Alcoholic Beverages	Bread and Cereals	Meat (ND)	Fish and Seafood	Milk, cheese and eggs (ND)	Oils and fats (ND)	Fruit (ND)	Vegetables	Sugar, jam, honey, chocolate.	Food products n.e.c. (ND)	Non-Alcoholic Beverages and coffee	Month an Year
ታህሳስ 2009	100.0	100.0	100.0	0.0	100.0	100.0	100.0	100.0	100.0	100.0	100.0	December 2016
ሐምሌ 2009 - ሰኔ 2010	116.5	127.3	115.5	0.0	119.1	86.9	135.8	117.9	82.3	134.0	102.8	July 2017 - June 2018
ሐምሌ 2009 - ሰኔ 2010	129.8	141.9	134.9	0.0	142.5	86.1	153.2	137.7	79.6	148.6	107.2	July 2018 - June 2019
2010												2017/2018
ሐምሌ 2009	110.2	117.0	106.6	0.0	112.4	93.7	118.3	114.2	88.5	121.5	95.0	July 2017
ነሐሴ 2009	111.4	122.6	107.7	0.0	108.7	94.0	121.3	110.5	86.3	125.1	95.9	August "
መስከረም 2010	117.2	132.1	109.7	0.0	116.6	95.7	134.1	115.6	85.3	125.6	102.2	September "
ጥቅምት 2010	118.3	135.1	108.8	0.0	114.2	93.1	133.0	115.2	88.7	129.8	103.8	October "
ሀዳር 2010	116.1	131.9	112.6	0.0	114.6	82.3	134.7	112.7	83.2	126.8	110.2	November "
ታህሳስ 2010	114.1	122.5	114.6	0.0	112.2	90.6	138.7	115.3	76.9	129.9	105.0	December "
ጥር 2010	115.1	120.0	116.6	0.0	118.4	96.4	141.3	120.1	77.9	130.7	101.6	January 2018
የካቲት 2010	116.6	122.6	119.2	0.0	120.8	76.9	138.6	126.8	75.2	143.0	100.5	February "
መጋቢት 2010	118.0	126.6	116.9	0.0	119.5	77.8	141.6	125.7	85.1	144.9	101.2	March "
ሚያዝያ 2010	118.5	128.5	125.0	0.0	127.8	80.5	143.2	118.5	90.7	144.5	102.1	April "
ግንቦት 2010	119.7	132.9	124.9	0.0	131.3	80.4	139.5	116.5	72.2	145.2	105.6	May "
ሰኔ 2010	122.5	135.7	123.9	0.0	133.0	81.5	145.3	123.3	77.2	140.8	109.9	June "
2011												2018/2019
ሐምሌ 2010	122.1	135.8	127.0	0.0	130.7	79.3	143.4	120.8	71.7	142.3	112.5	July 2018
ነሐሴ 2010	123.5	136.9	128.2	0.0	134.0	84.3	148.5	119.9	77.5	146.3	111.4	August "
መስከረም 2011	125.6	137.2	130.0	0.0	139.4	83.0	146.7	128.0	75.5	147.2	110.7	September "
ጥቅምት 2011	125.1	137.4	130.0	0.0	140.7	87.1	148.6	124.1	78.7	142.6	111.3	October "
ሀዳር 2011	123.6	136.7	128.0	0.0	133.6	82.6	148.4	123.8	73.0	144.0	110.2	November "
ታህሳስ 2011	124.7	137.6	129.3	0.0	136.6	85.8	149.3	126.3	77.8	143.4	107.4	December "
ጥር 2011	126.3	137.5	134.4	0.0	140.5	85.9	150.2	132.5	76.6	148.7	101.3	January 2019
የካቲት 2011	127.6	138.0	136.0	0.0	143.7	84.3	153.7	132.7	80.4	157.5	102.2	February "
መጋቢት 2011	130.0	140.5	134.7	0.0	144.8	81.3	155.2	142.9	81.9	151.9	103.3	March "
ሚያዝያ 2011	136.8	148.3	134.0	0.0	146.2	89.9	157.6	158.1	84.5	149.1	104.4	April "
ግንቦት 2011	145.3	155.8	152.1	0.0	159.8	94.2	165.0	173.2	88.3	153.5	104.4	May "
ሰኔ 2011	147.1	160.6	155.2	0.0	159.8	96.0	171.5	170.5	89.1	156.1	106.6	June "
2012												2019/2020
ሐምሌ 2011	148.6	168.7	151.2	0.0	150.0	106.1	174.2	162.6	94.2	155.1	109.3	July 2019
ነሐሴ 2011	153.2	175.7	160.1	0.0	153.4	84.8	180.9	175.6	97.2	161.7	113.0	August "
መስከረም 2012	154.9	177.1	164.3	0.0	155.3	86.8	189.4	180.6	85.6	160.6	112.2	September "

ሠንጠረዥ 11ብ፣ ጠቅላላ የምግብ የሽግግር ዋጋ መመዘኛ ኢንዱስትሪ በሥሩ የተካተቱ ክፍሎች ለደቡብ ብሔራዊ ክልላዊ መንግስት
 ታህሳስ 2009 = 100

Table 11b: General Food Consumer Price Index and Its Components for SNNP National Regional State
 December 2016 = 100

ወርና ዓመት	%ሀዕው ማህተም											ወርና ዓመት
	ምግብና አልኮሎሊክ ያልሆኑ መጠጦች	ጳቦት ለህል	ጾታ (ND)	ፍሰት ለሰህን	ጾታ ለሰህን	ጾታ ለሰህን	ጾታ ለሰህን	ጾታ ለሰህን	ጾታ ለሰህን	ጾታ ለሰህን	ጾታ ለሰህን	
Month an Year	Food and Non-Alcoholic Beverages	Bread and Cereals	Meat (ND)	Fish and Seafood	Milk, cheese and eggs (ND)	Oils and fats (ND)	Fruit (ND)	Vegetables	Sugar, jam, honey, chocolate.	Food products n.e.c. (ND)	Non-Alcoholic Beverages and coffee	Month an Year
ታህሳስ 2009	100.0	100.0	100.0	0.0	100.0	100.0	100.0	100.0	100.0	100.0	100.0	December 2016
ሐምሌ 2009 - ሰኔ 2010	120.5	128.4	121.2	0.0	118.8	113.2	131.8	117.9	102.9	119.1	116.3	July 2017 - June 2018
ሐምሌ 2009 - ሰኔ 2010	132.1	140.3	143.7	0.0	136.8	120.3	147.6	137.0	103.0	131.9	122.3	July 2018 - June 2019
2010												2017/2018
ሐምሌ 2009	118.2	129.4	112.8	0.0	108.1	110.5	109.8	108.7	106.7	109.1	109.1	July 2017
ነሐሴ 2009	118.6	137.0	111.8	0.0	107.9	110.5	112.3	104.2	107.9	109.7	106.5	August "
መስከረም 2010	121.0	135.5	117.3	0.0	107.5	114.3	118.0	107.8	107.4	110.9	115.7	September "
ጥቅምት 2010	120.5	130.9	117.1	0.0	115.5	112.7	127.0	111.6	100.4	111.9	118.0	October "
ህዳር 2010	120.8	129.5	118.9	0.0	114.6	107.7	141.5	110.1	104.5	111.1	120.1	November "
ታህሳስ 2010	115.0	115.3	118.8	0.0	118.8	110.2	139.0	115.8	102.6	110.1	115.6	December "
ጥር 2010	115.7	117.0	120.8	0.0	122.4	112.8	141.9	125.3	100.9	113.5	113.5	January 2018
የካቲት 2010	118.9	121.7	120.6	0.0	124.6	111.9	146.3	129.7	101.1	125.5	115.4	February "
መጋቢት 2010	121.1	123.0	120.6	0.0	119.6	112.4	145.3	136.1	100.7	131.2	113.8	March "
ሚያዝያ 2010	122.6	127.4	128.7	0.0	130.9	118.4	136.6	130.7	101.4	132.8	115.2	April "
ግንቦት 2010	125.8	135.7	130.6	0.0	127.0	118.3	131.6	114.9	100.6	131.9	122.0	May "
ሰኔ 2010	128.2	138.5	136.5	0.0	128.3	118.2	132.7	119.9	100.7	131.7	130.7	June "
2011												2018/2019
ሐምሌ 2010	129.3	139.1	139.0	0.0	128.8	116.8	130.0	121.0	100.8	133.7	132.0	July 2018
ነሐሴ 2010	129.6	139.3	137.5	0.0	127.0	117.9	123.5	125.8	100.9	132.5	135.0	August "
መስከረም 2011	129.6	135.0	138.5	0.0	126.5	119.7	136.6	128.9	100.9	130.2	135.9	September "
ጥቅምት 2011	128.6	132.6	136.4	0.0	131.7	117.9	148.5	126.3	100.7	131.4	133.6	October "
ህዳር 2011	128.8	133.8	137.9	0.0	132.2	118.3	145.1	126.3	101.2	131.6	120.3	November "
ታህሳስ 2011	128.2	133.4	139.3	0.0	133.8	118.6	149.6	127.6	101.1	133.4	113.4	December "
ጥር 2011	128.0	134.2	141.8	0.0	135.0	121.3	150.2	131.2	101.1	130.8	111.6	January 2019
የካቲት 2011	128.5	136.6	142.7	0.0	140.1	119.7	149.0	137.8	101.4	129.7	112.9	February "
መጋቢት 2011	130.5	137.0	140.0	0.0	140.7	120.2	155.2	147.0	102.4	129.2	115.4	March "
ሚያዝያ 2011	135.8	149.3	143.3	0.0	143.0	124.5	154.0	151.7	104.0	130.9	115.9	April "
ግንቦት 2011	143.4	154.6	163.3	0.0	144.1	125.3	171.6	160.3	107.2	133.5	120.5	May "
ሰኔ 2011	145.4	159.1	165.1	0.0	158.2	123.7	158.2	160.0	114.7	136.1	121.2	June "
2012												2019/2020
ሐምሌ 2011	150.2	165.2	170.4	0.0	152.3	126.4	156.9	156.0	114.2	138.0	127.7	July 2019
ነሐሴ 2011	152.2	172.1	169.6	0.0	154.1	129.8	162.2	162.5	116.8	136.6	131.2	August "
መስከረም 2012	157.1	171.6	173.9	0.0	154.9	137.4	176.0	165.0	123.5	136.8	135.8	September "

ሠንጠረዥ 12ለ፤ ጠቅላላ የምግብ የሽግግር ዋጋ መመዘኛ ኢንዱስትሪ በሥሩ የተካተቱ ክፍሎች ለሱግሌ ብሔራዊ ክልላዊ መንግስት
 ታህሳስ 2009 = 100

Table 12b: General Food Consumer Price Index and Its Components for Somali National Regional State
 December 2016 = 100

ወርና ዓመት	%ሀዕወ ስጫዎች											ወርና ዓመት
	ምግብና አልኮሎሊክ ያልሆኑ መጠጦች	ጳቦና ለህል	ጾታ	አሳና የባህር ምግቦች	ወተት ለይብና ዕንቁላል	ዘይትና ቅባቶች	ፍራፍሬ	አትክልትና ጥራጥራ	ስኳር ማርና ጅኮሊት	ሌሎች ምግቦች	አልኮሎሊክ ያልሆኑ መጠጦች	
Month an Year	Food and Non-Alcoholic Beverages	Bread and Cereals	Meat (ND)	Fish and Seafood	Milk, cheese and eggs (ND)	Oils and fats (ND)	Fruit (ND)	Vegetables	Sugar, jam, honey, chocolate.	Food products n.e.c. (ND)	Non-Alcoholic Beverages and coffee	Month an Year
ታህሳስ 2009	100.0	100.0	100.0	0.0	100.0	100.0	100.0	100.0	100.0	100.0	100.0	December 2016
ሐምሌ 2009 - ሰኔ 2010	113.7	119.3	118.1	0.0	99.7	100.3	118.3	136.5	105.3	139.3	103.2	July 2017 - June 2018
ሐምሌ 2009 - ሰኔ 2010	132.5	140.2	128.3	0.0	116.1	107.0	123.7	139.4	134.5	164.8	112.2	July 2018 - June 2019
2010												2017/2018
ሐምሌ 2009	103.3	106.7	112.7	0.0	92.0	100.1	123.4	118.4	95.3	121.5	100.9	July 2017
ነሐሴ 2009	105.3	106.5	112.9	0.0	107.0	100.1	110.7	113.3	95.4	126.2	101.3	August "
መስከረም 2010	112.2	106.5	113.0	0.0	95.5	100.1	105.4	245.7	95.8	132.0	99.1	September "
ጥቅምት 2010	111.7	118.4	117.5	0.0	94.5	99.8	116.4	158.4	95.5	126.5	100.7	October "
ህዳር 2010	114.8	121.9	118.4	0.0	103.5	100.0	118.8	128.3	106.1	134.0	100.2	November "
ታህሳስ 2010	115.2	117.8	117.9	0.0	112.9	99.9	118.4	132.0	108.0	135.4	107.7	December "
ጥር 2010	111.5	119.1	118.4	0.0	99.9	100.0	113.3	122.5	99.5	134.5	99.6	January 2018
የካቲት 2010	113.9	116.1	120.0	0.0	99.3	100.1	120.0	128.5	113.7	163.2	104.0	February "
መጋቢት 2010	117.7	123.5	121.3	0.0	102.0	100.1	115.3	122.6	115.0	162.6	112.6	March "
ሚያዝያ 2010	117.3	127.4	121.9	0.0	105.7	100.8	105.9	117.7	106.6	138.6	102.0	April "
ግንቦት 2010	119.8	132.4	116.1	0.0	95.3	101.0	141.6	121.7	116.6	139.6	101.5	May "
ሰኔ 2010	122.0	135.9	126.8	0.0	89.3	101.2	130.8	128.4	116.6	157.4	109.3	June "
2011												2018/2019
ሐምሌ 2010	126.1	138.1	122.0	0.0	105.4	101.1	134.0	142.5	116.6	147.5	116.7	July 2018
ነሐሴ 2010	130.0	139.4	122.1	0.0	116.9	101.1	131.1	118.3	136.1	146.2	107.9	August "
መስከረም 2011	130.8	137.9	114.8	0.0	117.2	101.2	122.2	142.9	136.1	147.9	111.1	September "
ጥቅምት 2011	128.5	137.6	120.9	0.0	106.6	100.7	116.3	131.5	136.1	145.7	119.3	October "
ህዳር 2011	128.3	138.0	109.6	0.0	107.6	100.8	116.9	130.2	136.1	147.9	110.7	November "
ታህሳስ 2011	128.9	137.9	123.0	0.0	110.5	101.0	117.9	124.7	136.1	149.3	112.9	December "
ጥር 2011	131.3	138.6	123.0	0.0	112.2	109.8	120.0	131.5	136.1	177.3	108.8	January 2019
የካቲት 2011	131.3	136.3	131.0	0.0	115.0	113.6	120.0	132.2	136.1	177.4	108.7	February "
መጋቢት 2011	133.2	137.7	144.2	0.0	122.3	114.6	124.9	130.2	136.1	172.6	108.7	March "
ሚያዝያ 2011	135.3	138.8	129.6	0.0	126.5	117.0	112.3	142.6	136.1	184.6	109.5	April "
ግንቦት 2011	141.4	148.7	146.5	0.0	127.0	109.2	127.7	166.9	136.1	186.4	108.7	May "
ሰኔ 2011	145.2	153.3	152.7	0.0	125.7	114.3	141.5	179.0	136.1	195.0	122.8	June "
2012												2019/2020
ሐምሌ 2011	149.9	160.8	166.5	0.0	130.1	125.0	144.0	171.6	136.1	195.3	118.3	July 2019
ነሐሴ 2011	153.5	164.6	164.2	0.0	132.4	126.2	146.3	188.1	136.1	201.0	129.6	August "
መስከረም 2012	161.8	172.6	146.5	0.0	162.1	126.2	154.2	195.9	136.1	202.3	126.6	September "

ሠንጠረዥ 13ለ፣ ጠቅላላ የምግብ የሽግግር ዋጋ መመዘኛ እንደክስና በሥሩ የተካተቱ ክፍሎች ለትግራይ ብሔራዊ ክልላዊ መንግስት
 ታህሳስ 2009 = 100

Table 13b: General Food Consumer Price Index and Its Components for Tigray National Regional State
 December 2016 = 100

ወርና ዓመት	%ሀዕወ ስጫዎች											ወርና ዓመት
	ምግብና አልኮሎሊክ ያልሆኑ መጠጦች	ጳቦና ለህል	ጾታ	አሳና የባህር ምግቦች	ወተት ለይብና ዕንቁላል	ዘይትና ቅባቶች	ፍራፍሬ	አትክልትና ጥራጥሬ	ስኳር ማርና ጅኮሌት	ሌሎች ምግቦች	አልኮሎሊክ ያልሆኑ መጠጦች	
Month an Year	Food and Non-Alcoholic Beverages	Bread and Cereals	Meat (ND)	Fish and Seafood	Milk, cheese and eggs (ND)	Oils and fats (ND)	Fruit (ND)	Vegetables	Sugar, jam, honey, chocolate.	Food products n.e.c. (ND)	Non-Alcoholic Beverages and coffee	Month an Year
ታህሳስ 2009	100.0	100.0	100.0	0.0	100.0	100.0	100.0	100.0	100.0	100.0	100.0	December 2016
ሐምሌ 2009 - ሰኔ 2010	118.0	126.4	128.0	0.0	119.0	103.6	108.9	107.8	95.9	113.0	106.4	July 2017 - June 2018
ሐምሌ 2009 - ሰኔ 2010	145.4	168.4	155.2	0.0	145.7	106.3	139.6	122.3	95.2	148.0	111.9	July 2018 - June 2019
2010												2017/2018
ሐምሌ 2009	108.0	112.2	121.8	0.0	107.9	100.0	106.9	99.0	101.5	97.7	103.2	July 2017
ነሐሴ 2009	111.6	115.2	129.0	0.0	110.0	124.6	109.7	103.9	101.4	93.1	99.1	August "
መስከረም 2010	115.0	122.7	120.1	0.0	117.8	99.6	109.3	118.7	104.2	96.1	102.8	September "
ጥቅምት 2010	116.3	123.5	123.3	0.0	117.6	99.5	108.4	124.3	99.0	91.7	104.0	October "
ህዳር 2010	116.1	123.2	119.5	0.0	121.3	101.1	107.3	116.6	93.9	104.6	108.3	November "
ታህሳስ 2010	112.7	122.1	119.3	0.0	114.1	100.2	107.3	105.8	92.7	99.0	107.1	December "
ጥር 2010	114.7	121.5	117.4	0.0	123.0	99.6	110.1	111.2	92.0	110.8	107.0	January 2018
የካቲት 2010	117.6	128.5	124.6	0.0	119.6	99.6	110.0	106.7	93.1	111.1	108.0	February "
መጋቢት 2010	125.2	132.7	148.8	0.0	99.1	103.4	108.9	100.8	92.5	139.6	109.5	March "
ሚያዝያ 2010	122.5	130.6	132.1	0.0	122.2	104.6	108.2	101.6	93.2	139.9	109.3	April "
ግንቦት 2010	126.5	137.7	139.9	0.0	134.8	105.9	110.8	98.7	93.9	143.7	108.2	May "
ሰኔ 2010	129.6	146.7	140.7	0.0	141.0	105.3	110.3	105.8	93.3	129.0	110.3	June "
2011												2018/2019
ሐምሌ 2010	133.9	154.1	146.3	0.0	132.2	105.0	111.0	110.1	93.3	129.6	111.6	July 2018
ነሐሴ 2010	131.6	146.7	143.7	0.0	141.0	105.3	111.9	103.4	93.3	145.0	110.3	August "
መስከረም 2011	141.6	158.0	156.9	0.0	143.6	98.1	113.8	125.8	93.3	145.0	111.8	September "
ጥቅምት 2011	144.4	170.6	147.9	0.0	149.5	104.9	139.8	122.3	93.3	144.5	110.3	October "
ህዳር 2011	145.4	170.2	155.1	0.0	151.1	107.1	140.3	120.0	93.3	145.9	110.3	November "
ታህሳስ 2011	144.4	170.4	151.5	0.0	137.8	106.9	141.2	123.3	93.9	139.6	109.7	December "
ጥር 2011	143.9	169.5	147.6	0.0	146.4	106.0	143.9	117.9	93.9	148.4	112.3	January 2019
የካቲት 2011	143.6	166.2	149.9	0.0	152.8	107.2	145.9	118.7	93.9	150.6	111.1	February "
መጋቢት 2011	149.0	174.4	158.8	0.0	134.5	107.0	147.5	119.2	93.9	161.8	111.5	March "