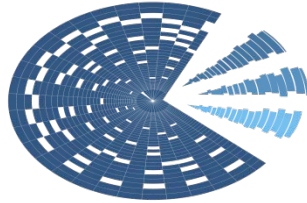


በኢትዮጵያ ፌዴራላዊ ዲሞክራሲያዊ ሪፐብሊክ

በብሔራዊ ልማትና ፕላን ኮሚሽን

የማዕከላዊ ስታቲስቲክስ ኤጀንሲ



**CENTRAL
STATISTICS
AGENCY**
ኢትዮጵያ

THE FEDERAL DEMOCRATIC REPUBLIC OF ETHIOPIA
NATIONAL DEVELOPMENT AND PLANNING COMMISSION

CENTRAL STATISTICS AGENCY

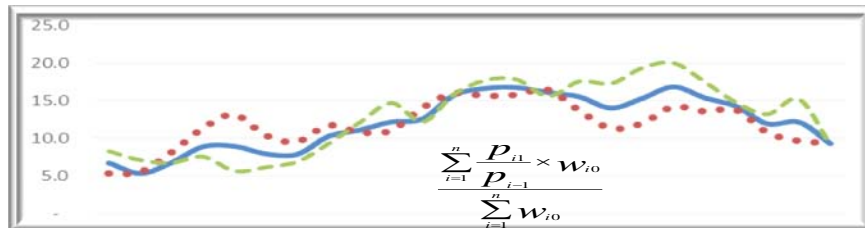
የአገር አቀፍና የክልሎች የሽማቹ ምጋ መመዘኛ ኢንዱክሶች

□ ጥር ወር 2013 ዓ.ም.

[ታህሳስ 2009= 100]

መረጃ ቁጥር 26

COUNTRY AND REGIONAL LEVEL CONSUMER PRICE INDICES (CPI)



[December 2016=100]

For the month of January 2021

Information No. 26

አዲስ አበባ

ጥር 28 ቀን 2013 ዓ.ም.

Tel: 251-11-1 553011

Fax: 251-11-1550334.

Web-site: <https://www.statsethiopia.gov.et>

ADDIS ABABA

05 February 2021

መግቢያ 1

የዋጋ ዋጋ ግሽበት ሁኔታ 8

ሠንጠረዥ ሐ: በአገር አቀፍ ደረጃ የ12 ወር ተንከባላይ አማካይ የዋጋ ግሽበት ሁኔታ ..10

ሠንጠረዥ መ: የዘንድሮውና የአምናው ተመሳሳይ ወሮች የሽማግሌት ዋጋ መመዘኛ
 ኢንዱስትሪ ለውጥ ንፅፅር በአገር አቀፍ ደረጃ ማጠቃለያ 11

ሠንጠረዥ ሠ: የአሁኑና ያለፈው ወር የሽማግሌት ዋጋ መመዘኛ ኢንዱስትሪ ንጽጽር
 በአገር አቀፍ ደረጃ ማጠቃለያ 13

የሠንጠረዦች ዝርዝር

ሠንጠረዥ ሀ: በጥናቱ የተሸፈኑ ገበያዎችና በኢንዱስትሪ ማዕቀፍ የተካተቱ ዕቃዎችና
 በዕቃዎች/አገልግሎቶች ብዛት በክልል 3

ሠንጠረዥ 1ሀ: ጠቅላላ የሽማግሌት ዋጋ መመዘኛ ኢንዱስትሪና በስሩ የተካተቱ ክፍሎች
 በአገር አቀፍ ደረጃ 17

ሠንጠረዥ 1ለ: ጠቅላላ ምግብና የምግብ ክፍሎች የሽማግሌት ዋጋ መመዘኛ
 ኢንዱስትሪ በአገር አቀፍ ደረጃ18

ሠንጠረዥ 1ሐ: አገር አቀፍ የቤት ኪራይ፣ የቤት መስሪያ እቃዎች፣ውሃና ኢነርጅ
 የሽማግሌት ዋጋ መመዘኛ ኢንዱስትሪ 19

ሠንጠረዥ 2ሀ: ጠቅላላ የሽማግሌት ዋጋ መመዘኛ ኢንዱስትሪ
 በአገር አቀፍና በክልሎች ደረጃ..... 20

ሠንጠረዥ 2ለ: የምግብ ዋጋ መመዘኛ ኢንዱስትሪ ማጠቃለያ በአገር አቀፍ
 እና በክልሎች ደረጃ22

ሠንጠረዥ 3ሀ: ጠቅላላ የሽማግሌት ዋጋ መመዘኛ ኢንዱስትሪና በስሩ የተካተቱ
 ክፍሎች ለአዲስ አበባ ከተማ መስተዳደር.....24

ሠንጠረዥ 3ለ: ጠቅላላ ምግብና የምግብ ክፍሎች የሽማግሌት ዋጋ መመዘኛ
 ኢንዱስትሪ ለአዲስ አበባ ከተማ መስተዳደር..... 25

ሠንጠረዥ 4ሀ: ጠቅላላ የሽማግሌት ዋጋ መመዘኛ ኢንዱስትሪና በስሩ የተካተቱ
 ክፍሎች ለአፋር ክልላዊ መንግስት..... 26

ሠንጠረዥ 4ለ: ጠቅላላ ምግብና የምግብ ክፍሎች የሽማግሌት ዋጋ መመዘኛ
 ኢንዱስትሪ ለአፋር ክልላዊ መንግስት..... 27

ሠንጠረዥ 5ሀ: ጠቅላላ የሽማግሌት ዋጋ መመዘኛ ኢንዱስትሪና በስሩ የተካተቱ

ክፍሎች አማራ ክልላዊ መንግስት.....	28
ሠንጠረዥ 5ላ: ጠቅላላ ምግብና የምግብ ክፍሎች የሽማግሌት ዋጋ መመዘኛ	
ኢንዱስትሪ ለአማራ ክልላዊ መንግስት.....	29
ሠንጠረዥ 6ሀ: ጠቅላላ የሽማግሌት ዋጋ መመዘኛ ኢንዱስትሪ በስሩ የተካተቱ	
ክፍሎች ለቤንሻንጉል-ጉሙዝ ክልላዊ መንግስት.....	30
ሠንጠረዥ 6ለ: ጠቅላላ ምግብና የምግብ ክፍሎች የሽማግሌት ዋጋ መመዘኛ	
ለቤንሻንጉል-ጉሙዝ ክልላዊ መንግስት	31
ሠንጠረዥ7ሀ: ጠቅላላ የሽማግሌት ዋጋ መመዘኛ ኢንዱስትሪ በስሩ የተካተቱ	
ክፍሎች ለድሬድዋ አስተዳደር ካውንስል	32
ሠንጠረዥ 7ለ: ጠቅላላ ምግብና የምግብ ክፍሎች የሽማግሌት ዋጋ መመዘኛ	
ለድሬድዋ አስተዳደር ካውንስል.....	33
ሠንጠረዥ 8ሀ: ጠቅላላ የሽማግሌት ዋጋ መመዘኛ ኢንዱስትሪ በስሩ የተካተቱ	
ክፍሎች ለጋምቤላ ህዝቦች ክልላዊ መንግስት	34
ሠንጠረዥ 8ለ: ጠቅላላ ምግብና የምግብ ክፍሎች የሽማግሌት ዋጋ መመዘኛ	
ለጋምቤላ ህዝቦች ክልላዊ መንግስት.....	35
ሠንጠረዥ 9ሀ: ጠቅላላ የሽማግሌት ዋጋ መመዘኛ ኢንዱስትሪና በስሩ የተካተቱ ክፍሎች	
ለሐረሪ ህዝብ ክልላዊ መንግስት.....	36
ሠንጠረዥ 9ለ: ጠቅላላ ምግብና የምግብ ክፍሎች የሽማግሌት ዋጋ መመዘኛ	
ኢንዱስትሪ ለሐረሪ ህዝብ ክልላዊ መንግስት.....	37
ሠንጠረዥ10ሀ: ጠቅላላ የሽማግሌት ዋጋ መመዘኛ ኢንዱስትሪና በስሩ የተካተቱ	
ክፍሎች ለኦሮሚያ ክልላዊ መንግስት.....	38
ሠንጠረዥ 10ለ: ጠቅላላ ምግብና የምግብ ክፍሎች የሽማግሌት ዋጋ መመዘኛ	
ኢንዱስትሪ ለኦሮሚያ ክልላዊ መንግስት.....	39
ሠንጠረዥ 11ሀ: ጠቅላላ የሽማግሌት ዋጋ መመዘኛ ኢንዱስትሪና በስሩ የተካተቱ	
ክፍሎች ለደ.ኢ.ብ.ብ.ሀ ክልላዊ መንግስት.....	40
ሠንጠረዥ11 ለ: ጠቅላላ ምግብና የምግብ ክፍሎች የሽማግሌት ዋጋ መመዘኛ	
ኢንዱስትሪ ለደ.ኢ.ብ.ብ.ሀ ክልላዊ መንግስት	41
ሠንጠረዥ 12ሀ: ጠቅላላ የሽማግሌት ዋጋ መመዘኛ ኢንዱስትሪ በስሩ የተካተቱ	
ክፍሎች ለሶማሌ ክልላዊ መንግስት	42
ሠንጠረዥ 12ለ: ጠቅላላ ምግብና የምግብ ክፍሎች የሽማግሌት ዋጋ መመዘኛ	

ኢንዱስትሪ ለሰማሌ ክልላዊ መንግስት.....	43
ሠንጠረዥ13ሀ: ጠቅላላ የሽማግሌት ዋጋ መመዘኛ ኢንዱስትሪና በስፋ የተካተቱ ክፍሎች ለትግራይ ክልላዊ መንግስት.....	44
ሠንጠረዥ 13ለ: ጠቅላላ ምግብና የምግብ ክፍሎች የሽማግሌት ዋጋ መመዘኛ ኢንዱስትሪ ለትግራይ ክልላዊ መንግስት	45

CONTENTS

	Page
Introduction.....	5
Inflation Rate.....	8
Comparison of CPI Movements, Current Vs Last Year's Similar Months, at country Level.....	11
Comparison of CPI Movements, Current Vs Last Month, at country and Regional Levels.....	13

LIST OF TABLES

Table a: Number of Markets Covered and Basket of Commodities by Region.....	3
Table 1a: General Consumer Price Index and Its Components at Country Level.....	17
Table 1b: Consumer Price Index of Total Food and Its Components at Country Level.....	18
Table 1c: Consumer Price Index of House Rent, Construction Materials, Water, Fuel and Power and Its Components at Country Level.....	19
Table 2a: Summary of General Consumer Price Indices at Country and Regional Levels.....	20
Table 2b: Summary of Consumer Price Indices of Food at Country and Regional Levels.....	22

Table 3a: General Consumer Price Index and Its Components for the City of Addis Ababa Administration.....	24
Table 3b: Consumer Price Index of Total Food and Its <i>Components for the City of Addis Ababa Administration.....</i>	25
Table 4a: General Consumer Price Index and Its Components for the Afar Regional State.....	26
Table 4b: Consumer Price Index of Total Food and Its Components for the Afar Regional State.....	27
Table 5a: General Consumer Price Index and Its Components for the Amhara Regional State.....	28
Table 5b: Consumer Price Index of Total Food and Its Components for the Amhara Regional State.....	29
Table 6a: General Consumer Price Index and Its Components for the Benishangul-Gumuz Regional State.....	30
Table 6b: Consumer Price Index of Total Food and Its <i>Components for the Benishangul-Gumuz Regional State.....</i>	31
Table 7a: General Consumer Price Index and Its Components for the Dire Dawa Administrative Council.....	32
Table 7b: Consumer Price Index of Total Food and Its <i>Components for the Dire Dawa Administrative Council.....</i>	33
Table 8a: General Consumer Price Index and Its Components for the Gambela Peoples Regional State.....	34
Table 8b: Consumer Price Index of Total Food and Its <i>Components for the Gambela Peoples Regional State.....</i>	35
Table 9a: General Consumer Price Index and Its	

Components for the Harari Peoples Regional State.....	36
Table 9b: Consumer Price Index of Total Food and Its	
Components for the Harari Peoples Regional State.....	37
Table 10a: General Consumer Price Index and Its	
Components for the Oromia Regional State.....	38
Table 10b: Consumer Price Index of Total Food and Its	
Components for the Oromia Regional State.....	39
Table 11a: General Consumer Price Index and Its	
Components for the SNNP Regional State.....	40
Table 11b: Consumer Price Index of Total Food and Its	
Components for the SNNP Regional State.....	41
Table 12a: General Consumer Price Index and Its	
Components for the Somali Regional State.....	42
Table 12b: Consumer Price Index of Total Food and Its	
Components for the Somali Regional State.....	43
Table 13a: General Consumer Price Index and Its	
Components for the Tigray Regional State.....	44
Table 13b: Consumer Price Index of Total Food and Its	
Components for the Tigray Regional State.....	45

መግቢያ

የሽማግሌት ዋጋ መመዘኛ ኢንዱክሽን ማለት ሽማግሌት ለተወሰኑ ዕቃዎችና አገልግሎቶች የክፈሉትን አማካይ የዋጋ ለውጥ ለመለካት የሚያገለግል ጠቋሚ አህዝ ነው። የዋጋ መመዘኛ ኢንዱክሽን አብዛኛውን ጊዜ መሠረት የሚያደርገው የቤተሰብ ገቢ፣ የፍጆታና ወጪ ጥናት ውጤት በሆነው ቤተሰቦች በዕቃዎችና ግልጋሎቶች ላይ ባወጡት የመቶኛ ድርሻ መጠንና የወቅቱ የገበያ ዋጋ ላይ ነው። በዚህ ሪፖርት ውስጥ የተካተቱት 12 ኢንዱክሶች (የ11 ክልሎችና የአገር አቀፍ) መሠረት ያደረጉት የማዕከላዊ ስታቲስቲክስ ኤጀንሲ በ2008 በጀት ዓመት በመላ አገሪቱ በናሙና በተመረጡ ቦታዎች ያካሄደውን የቤተሰብ ገቢ፣ ፍጆታና ወጪ ጥናት ውጤት ነው።

ይህ ታህሳስ ወር 2009 ዓ.ምን መሠረት ያደረገው (ታህሳስ 2009=100) የሽማግሌት ዋጋ መመዘኛ ኢንዱክሽን በክልል ደረጃ ሲዘጋጅ በዓይነቱ ለአራተኛ ጊዜ የተዘጋጀ ሲሆን በታህሳስ 2004 ዓ.ም መሠረት ያደረገውን የሽማግሌት መመዘኛ ኢንዱክሽን የሚተካ ነው። በአገር አቀፍ ደረጃ ከ1988 ጀምሮና በአዲስ አበባ ከተማ ደረጃ ደግሞ ከ1955 ዓ.ም ጀምሮ በየወሩ ተመሳሳይ ኢንዱክሶች የተዘጋጁ ለተጠቃሚዎች ሲሰራጩ መቆየታቸው ይታወቃል። እነዚህ 12 የዋጋ መመዘኛ ኢንዱክሶች በአገሪቱ የሚገኙ 11 ክልሎችና የአገር አቀፍን ሪፖርት ጨምሮ የሚሸፍነው የዕቃዎችና የአገልግሎቶችን ክምችት በያዙ ሁለት ዋና ክፍሎች የተከፈሉ ናቸው። እነሱም፡- የምግብና ምግብ ነክ ያልሆኑ መመዘኛ ኢንዱክሶች ሲሆን ምግብ ነክ ያልሆኑ መመዘኛ ኢንዱክሽን እንደገና በ11 ንዑስ ክፍሎች ይከፈላል። እነዚህም መጠጥ፣ ሲጃራና ትምባሆ፣ ልብስና መጫሚያ፣ የቤት ኪራይ፣ የቤት መስሪያ ዕቃዎች፣ ውሃና ኢነርጅ፣ የቤት ዕቃዎች፣ የቤት ማስገባቶች፣ የቤት ቁሳቁስና የቤት ሠራተኛ ደመወዝ፣ ሕክምና፣ ትራንስፖርት፣ መገናኛ፣ መዝናኛና ባህል፣ ትምህርት፣ ሬስቶራንትና ሆቴሎች እንዲሁም ሌሎች ዕቃዎችና አገልግሎቶች ሲሆኑ የሁሉም ክፍሎች አጠቃላይ ውጤት የሚሆነው ደግሞ የጠቅላላ ዋጋዎች መመዘኛ ኢንዱክሽን ነው።

በሁሉም ክልሎች የጠቅላላ ዋጋ መመዘኛ ኢንዱክሶች ስሌት አብዛኛውን የመቶኛ ወጪ ድርሻ የሚይዘው የምግብና አልኮል ያልሆኑ መጠጦች መመዘኛ ኢንዱክሽን ሲሆን በሁሉም የምግብ ዋጋ መመዘኛ ኢንዱክሶች ዋና ዋና ክፍሎች ዳቦና እህል፣ ሥጋ፣ ዓሣና የባህር ምግቦች፣ ወተት፣ አይብና እንቁላል፣ ዘይትና ቅባቶች፣ ፍራፍሬ፣ አትክልትና ጥራጥሬ፣ ስኳር ማርና ቸኮሌት፣ ሌሎች ምግቦችና አልኮል ያልሆኑ መጠጦች ናቸው።

ለዋጋ ኢንዱክሶቹ የተመረጡት ዕቃዎችና አገልግሎቶች የዋጋ መረጃ የሚሰበሰበው በየዞን/በየልዩ ወረዳ በተመረጡ ወካይ ከተሞች ውስጥ ባሉ የገበያ ቦታዎች ነው። በመሆኑም ከእያንዳንዱ ዞን ሁለት ከተሞች (የገበያ ቦታዎች) የተመረጡ ሲሆን እንደዚሁም በእያንዳንዱ ልዩ ወረዳ አንድ ከተማ (የገበያ ቦታ) በጥናቱ እንዲካተት ተደርጓል።

በእነዚህ ከተሞች ውስጥ ተመድበው ለሚሰሩ መረጃ ሰብሳቢዎች በየበጀት ዓመቱ መጨረሻ በመረጃ አሰባሰብ ዘዴው ላይ ስልጠና የሚሰጥ ሲሆን ለአሰባሰቡ የሚረዱ የመስክ መገልገያ መሣሪያዎች (ካፒ፣ሚዛን፣ሜትር...ወዘተ) ይሰጣቸዋል። እነዚህ መሣሪያዎችን በመጠቀም በየወሩ የዋጋ መረጃዎችን ከነጋዴዎች ይሰበስባሉ።አንዳንድ ጊዜም አንድ በላተኛ ወይም ገዥ ከነጋዴ ሲገዛ ቢገኝና ለሥራው ተባባሪነቱን ካሳየ መረጃው ክርሱም ይሰበስባል። የችርቻሮ ዋጋ መረጃ የሚሰበሰበው እንደ አውሮፖውያን ዘመን አቆጣጠር ወሩ በገባ ከ1ኛው ቀን አንስቶ እስከ 15ኛው ቀን ነው። የክልል ኢንዱስትሪ ለማስላት ለኢንዱስትሪ ለተመረጡት እቃዎችና አገልግሎቶች አማካይ የችርቻሮ ዋጋቸውን የጂኦሜትሪክ ሚን ዘዴ ጥቅም ላይ ውሏል። የኢንዱስትሪ ሪፖርቱም በየወሩ እ.አ.አ በሁለተኛው ወር 5ኛው ቀን ለተጠቃሚዎች ይሰራጫል። በተጨማሪም ሪፖርቱ በማዕከላዊ ስታቲስቲክስ ኤጀንሲ ድረ-ገጽ ላይ በየወሩ ይወጣል።

የአገር አቀፍ የችርቻሮ ዋጋ መመዘኛ ኢንዱስትሪ የሚሰላው እያንዳንዱ ክልል ለአገር አቀፍ የቤተሰብ ወጪ ያለውን የመቶኛ ድርሻ መሠረት በማድረግ ነው።በመሆኑም ለአገር አቀፍ ኢንዱስትሪ ስሌት ከ94 በመቶ በላይ አስታውጾ የሚያደርጉ ክልሎች በቅደም ተከተል ኦሮሚያ፣አማራ፣የደቡብ ብሄር ብሄረሰቦችና ሕዝቦች፣አዲስ አበባና ትግራይ ሲሆኑ የተቀሩት ክልሎች በየወሩ ለሚታየው አገር አቀፍ የችርቻሮ ዋጋ መመዘኛ ኢንዱስትሪ ስሌት የሚኖራቸው አስታውጾ ከስድስት በመቶ የማይበልጥ ነው።

ለችርቻሮ ዋጋ ጥናት በአጠቃላይ 119 የገበያ ቦታዎች የተመረጡ ሲሆን በእያንዳንዱ ክልል የተመረጡ የገበያዎች ብዛትና በየኢንዱስትሪዎቻቸው ማዕቀፍ የተካተቱ ዕቃዎች/አገልግሎቶች ብዛት ከዚህ በታች ቀርቧል።

ሠንጠረዥ ሀ፡ በጥናቱ የተሸፈኑ ገበያዎች በኢንዱስትሪ ማዕቀፍ የተካተቱ ዕቃዎች አገልግሎቶች ብዛት በክልል

Table A: Number of Markets Covered and Basket of Commodities by Region.

ተ/ቁ No.	ክልል	የገበያ ቦታዎች ብዛት	በኢንዱስትሪ የተካተቱ ዕቃዎች/አገልግሎቶች ብዛት Basket of Goods and Services				Region
			Markets	ታህሳስ 1993= 100	ታህሳስ1999 =100	ታህሳስ 2004=100	
1	ትግራይ	8	114	143	157	165	Tigray
2	አፋር	4	85	153	123	135	Afar
3	አማራ	20	118	144	160	132	Amhara
4	አሮሚያ	24	127	161	175	171	Oromia
5	ሶማሌ	6	85	122	120	111	Somalie
6	ቤኒሻንጉል ጉሙዝ	6	111	142	164	134	Ben- Gumuz
7	ደ.ብ.ብ.ሀ	31	130	152	168	173	SNNP
8	ጋምቤላ	3	105	103	131	107	Gambela
9	ሐረሪ	2	102	158	115	156	Harari
10	አዲስ አበባ	12	175	193	165	185	Addis Ababa
11	ድሬድዋ	3	121	150	139	155	D. Dawa
		119	116	147	147	148	

ለጠቋሚ አህዙ ክንዋኔ ዋናው ነገር ጠቋሚ አህዙ ማዕቀፍ ተካትተው በዋናነት የሚያገለግሉ እቃዎችና አገልግሎቶች የመምረጥ ጉዳይ ነው። ጠቋሚ አህዞች የሚመሰረቱት አጠቃላይ በናሙና በሚመረጡ ዕቃዎች ላይ ሲሆን በጠቋሚ አህዙ ማዕቀፍ ውስጥ መካተት የሚገባው ዕቃ መወሰን ግን ሁሌም ቀላል የሚባል ተግባር አይደለም። የተያያዩ የአመራረጥ ዘዴ መጠቀም ቢቻልም የሚመረጡት ዕቃዎች ለረጅም ጊዜ የሚኖራቸው ተፈላጊነት፣ በአስተማማኝ ሁኔታ በገበያ ላይ የመገኘታቸው ጉዳይ፣ ሌሎችን ዕቃዎች የመወከል ብቃትና ከሌሎች ምርቶች ጋር ያላቸው ተወዳዳሪነት መሠረት ያደረገ እንዲሆን ይፈለጋል። በአጠቃላይ የተመረጡት ዕቃዎች በበቂ መጠን የመገኘታቸው ሁኔታ፣ በየወቅቱ ተወዳዳሪነታቸውና ዕቃዎችና አገልግሎቶች ምድቡን የመወከላቸው ብቃትን ማረጋገጥ ያስፈልጋል።

ይህ ታህሳስ 2009 ዓ/ም መሠረት ያደረገው የሸማቾች ዋጋ መመዘኛ ኢንዱስትሪ አይነቶችና እያንዳንዳቸው ዋና ክፍል ያለው የወጪ ድርሻ በገፅ 7 ላይ ይታያል። ይህ ሠንጠረዥ እንደሚያሳየው የምግብ የመቶኛ የወጪ ድርሻ ታህሳስ 2004 ዓ/ም ከነበረው 53 በመቶ ወደ 54 በመቶ ጨምሮአል። በአንጻሩ ደግሞ ምግብ ነክ ያልሆነ መመዘኛ ኢንዱስትሪ ታህሳስ 2004 ዓ/ም ከነበረው 47 በመቶ የወጪ ድርሻ ወደ 46 በመቶ ዝቅ ብሏል።

Introduction

The Consumer Price Index (CPI) measures the average change in the price paid by consumers for a fixed market basket of goods and services. It is usually based on household expenditure weights of the goods and services in the basket and their current market prices. The twelve CPI's (i.e., the CPI's of the 11 Regions and the CPI at Country Level) presented in this report are based on the results of the Household Income, Consumption and Expenditure Survey (HICES) conducted by the Central Statistical Agency in 2015/2016 from which expenditure weights are derived for major household goods and services of that period and adjusted using the December 2016 retail prices of the goods and services as a base period.

The December 2016 based CPI updates the previous CPI series (i.e. December 2011 based) and the newly selected baskets are more diversified and the weights are more accurate. It also showed various improvements and incorporates non-food index as an independent group. The new series is constructed for country as a whole and Regional States including Dire Dawa and the Addis Ababa City Administration. However, similar indices had been utilized at Addis Ababa Level since 1963 and at Country, Urban and Rural Levels since 1995/96 and in Country and Regional level since 2000.

All the twelve general indices are divided into two major groups that is food and non-food index. The non-food index has eleven major divisions each, namely: Alcoholic Beverages; Cigarettes and Tobacco; Clothing and Footwear; House Rent, Construction Materials, Water, and Fuel and Power; Furniture, Furnishing, Household Equipment and Operation; Health; Transport; Communication; Recreation, Culture; Education; Restaurants and Hotels; and Miscellaneous Goods and Services. On the other hand, the Food Index has 10 classes. These are: Bread and Cereals; Meat; Fish and Seafood; Milk, Cheese and Eggs; Oil and Fats; Fruits; Vegetables and Pulses, Sugar, Honey and Chocolate; Food Products n,e.c., and Non-alcoholic beverages.

For the construction of the current consumer price indices, up to date data on retail prices are collected in the purposely from selected sample market places located in

representative urban centers in each zone/special weredas of the country. Hence, a total of 119 market places were selected for the retail price survey. In each market place an enumerator is assigned to undertake the data collection activities every month. The price data is collected from the 1st day through 15th days of European Calendar month under consideration. To calculate the monthly regional consumer price indices, geometric means of prices of the specific regions are used. The distribution of the market place of each region and items included in the basket of commodities are given on Table A on page 3. An important factor in constructing a Consumer Price Index is to select the representative basket of goods and services. Including all consumption items into the market basket of goods and services is both cumbersome and unnecessarily costly in term of data collection and processing. Furthermore, it doesn't make sense to include an insignificant weight into an index basket which could not move the price relative up or downwards compared to the general market trend. As a result, basket of goods and services included in the regional baskets are determined by expenditure cut-off point.

Country level CPI aggregates the regional group indices. The contributions of the six relatively big regions in terms of the magnitude of the expenditure account for more than 95 percent, namely, these regions are Oromia, Amhara, SNNP, Addis Ababa, Somali and Tigray. On the other hand, the contributions of the remaining regions to the Country Level Consumer Price Index is about five percent.

According to the weights for food and non-food groups in Table B below, the December 2016 based CPI is about 54 percent of household expenditure spent on the food component, which increased by 1 percentage points as compared to the December 2006 based CPI. On the other hand, the expenditure on non-food components decreased from 47 percent to 46 percent. The reason for ± 1 percentage point change was that the share of food increased in the two geographically and economically big regions of Oromia and Southern Peoples region.

The 2011 and 2016 CPI adapted the full version of the latest Classification of Individual Consumption by Purpose (COICOP) while the 2006 based CPI was an earlier version of COICOP. The following table shows the different COICOP versions by

Comparison. In the 2006 based CPI Recreation, Entertainment and Education; and Transport and Communication were put in the same divisions while the 2011 and 2016 based CPI separated them as standalone divisions. A new division called Restaurants and Hotels was introduced in the 2011 and 2016 based CPI by moving the food taken away from home previously categorized with Food to this new division. Non-Alcoholic beverages were taken out of the Non-Food division and moved to the Food division.

**Table B: Major groups in the 2006, 2011 and 2016 based CPI and their weights
At Country Level**

Comparison of COICOP Divisions	December 2006=100	December 2011=100	December 2016=100
1. FOOD AND NON-ALCOHOLIC BEVERAGES	57%	53%	54%
Non - FOOD	43%	47%	46%
2. ALCOHOLIC BEVERAGES AND TOBACCO, NARCOTICS	2.5	4.85	4.9
3. CLOTHING AND FOOTWEAR	8.32	6.62	5.7
4. HOUSING, WATER, ELECTRICITY, GAS AND OTHER FUELS	20.56	16.34	16.8
5.FURNISHINGS, HOUSEHOLD EQUIPMENT AND ROUTINE MAINTENANCE OF THE HOUSE	3.75	5.41	4.7
6. HEALTH	1.11	1.08	1.5
7. TRANSPORT	2.5	2.80	2.5
8. COMMUNICATION	-	1.08	2.0
9. RECREATION AND CULTURE	1.1	0.60	0.4
10. EDUCATION	-	0.45	0.2
11. RESTAURANTS AND HOTELS	-	5.46	5.3
12. MISCELLANEOUS GOODS AND SERVICES	3.2	2.56	2.5
Total	100	100	100

የጥር ወር 2013 ዓ.ም የዋጋ ግሽበት ሁኔታ

ሀ) የ12 ወራት ተንከባላይ አማካይ አገራዊ የዋጋ ግሽበት

ከሠንጠረዥ "ሐ" መረዳት እንደሚቻለው በጥር ወር 2013 ዓ/ም የተመዘገበው የ12 ወራት ተንከባላይ አማካይ አገራዊ አጠቃላይ የዋጋ ግሽበት ካለፈው ዓመት ተመሳሳይ ወቅት ጋር ሲነፃፀር በ20.4 በመቶ ጭማሪ አሳይቷል። በጥር ወር 2013 ዓ.ም አገራዊ የ12 ወራት ተንከባላይ አማካይ የምግብ የዋጋ ግሽበት በ23.2 በመቶ ዕድገት አሳይቷል። የ12 ወራት ተንከባላይ አማካይ አገራዊ ምግብ ነክ ያልሆኑ የዋጋ ግሽበትም በ16.9 ከመቶ ጭማሪ አሳይቷል። የ12 ወራት ተንከባላይ አማካይ የዋጋ ግሽበት ረዘም ያለ ጊዜ የዋጋ ግሽበት ሁኔታ የሚያሳይ ነው።

ለ) የዋጋ ግሽበት ሁኔታ ካለፈው ዓመት ተመሳሳይ ወር ጋር በማነፃፀር

የዋጋ ግሽበት ሁኔታ ካለፈው ዓመት ተመሳሳይ ወር ጋር በማነፃፀር የሚገኘው ውጤት ወቅታዊ የዋጋ ግሽበት ሁኔታን ይገልጻል። ሠንጠረዥ/መ/የሚያሳየው የዋጋ ግሽበት ሁኔታ ካለፈው ዓመት ተመሳሳይ ወር ጋር በማነፃፀር ነው። ከሠንጠረዥ መረዳት እንደሚቻለው የጥር ወር 2013 ዓ/ም አጠቃላይ የዋጋ ግሽበት ካለፈው ዓመት ጥር ወር 2012 ዓ.ም ጋር ሲነፃፀር በ19.2 ከመቶ ከፍ ብሏል። የምግብ ዋጋ ግሽበት የጥር ወር 2013 ዓ.ም ካለፈው ዓመት ጥር ወር 2012 ዓ.ም ጋር ሲነፃፀር በ23.1 በመቶ ጭማሪ አሳይቷል። በያዘነው ወር በአብዛኛው የእህሎች የዋጋ ጭማሪ የታየ ሲሆን ለምግብ ዋጋ ግሽበት መጨመር ከፍተኛ አስተዋጽኦ አላቸው። በተጨማሪም አትክልትና አንዳንድ የጥራጥራ ዓይነቶች የዋጋ ጭማሪ አስመግበዋል። በሌላ በኩል ስኳር፣ የምግብ ዘይት፣ ቅመማ ቅመም፣ ድንች እና ቡና ዋጋ ጭማሪ በዚህም ወር በመቀጠላቸው ለዋጋ ግሽበት ምጣኔ መጨመር አስተዋጽኦ አድርገዋል። ያለፈው ዓመት ተመሳሳይ ወር ዋጋ ከአሁኑ ዓመት ተመሳሳይ ወር ጋር በንጽጽር ዝቅተኛ ስለነበር የዋጋ ግሽበቱ በያዘነው ወርም ከፍ ብሏል። በሌላ በኩል ምግብ ነክ ያልሆኑ የኢንዱስትሪ ክፍሎች የዋጋ ግሽበት የጥር ወር 2013 ዓ.ም ካለፈው ዓመት ጥር ወር 2012 ዓ/ም ጋር ሲነፃፀርም የ14.5 በመቶ ጭማሪ አሳይቷል። ከምግብ ነክ ያልሆኑ የኢንዱስትሪ ክፍሎች የዋጋ ግሽበት ካለፈው ተመሳሳይ ወቅት ጋር ሲነፃፀር ከፍ እንዲል ካደረጉት ዋና ምክንያቶች ውስጥ በተለይም በአልኮልና ትምባሆ ትምባሆ፣ አነቃቂዎች (ጫት)፣ የቤት እንክብካቤና ኢነርጅ (ማገደና ከሰል)፣ የቤት መስሪያ እቃዎች፣ ህክምና፣ ትራንስፖርት (ነዳጅ) እና ጌጣጌጥ (ወርቅ) ላይ የታየው የዋጋ ጭማሪ ነው።

ሐ) የዋጋ ግሽበት ሁኔታ የአሁኑን ወር ካለፈው ወር ጋር በማነፃፀር

የጥር ወር 2013 ዓ/ም አጠቃላይ የዋጋ ግሽበት ካለፈው ወር ጋር ሲነፃፀር በ1.6 ከመቶ ጭማሪ አሳይቷል። ወርሃዊ የዋጋ ግሽበት ምጣኔው በመጨረሻዎቹ ሁለት ተከታታይ ወራት መካከል ያለውን የዋጋ ለውጥ ለመለካት ያገለግላል። ወርሃዊ የዋጋ ግሽበት ምጣኔው የወቅቱን ሁኔታ የሚያሳይ በመሆኑ የአጭር ጊዜ ክስተቱን ብቻ ያመለክታል።

January 2021 Country Level Inflation Rate

12 months Moving Average Inflation at Country Level

As it is indicated in Table 'C' below the country level overall inflation rate (annual change based on 12 months Moving Average) rose by 20.4 percent in January 2021 as compared to the one observed in a similar period a year ago. The country level food inflation increased by 23.2 percent as compared to the one observed a year ago. The country level Non-food inflation rate increased by 16.9 percent in January 2021 as compared to the one observed in December 2020. The 12 months moving average inflation rate shows the longer term inflationary situation.

a) *Inflation based on comparison of Current vs. Last year's similar month at Country Level (Year-on-Year Change)*

Inflation based on comparison of Current vs. Last year's similar month shows the current inflation situation. Table (D) shows Inflation rate based on last year's similar month comparison. As can be seen from the table the January 2021 General year-on-year inflation has increased by 19.2 percent as compared to the one observed in January 2020. The year-on-year Food inflation has increased by 23.1 percent in January 2021 as compared to the one observed in January 2020. Most Cereal prices showed an increase in the current month which has great contribution for the rise of food inflation. In addition, Vegetables and some Pulses types registered an increase in their price in the current month. On the other hand, the continued rise in the prices of Sugar, edible Oil, Spices, Potatoes, and coffee during the current month has contributed to an increase in the rate of inflation. The annual inflation rate showed an increase in the current month since prices were relatively lower in the same month last year. The Non-Food inflation also increased by 14.5 percent in January 2021 as compared to the one observed in January 2020. The rise in Non-food Inflation is mainly due to rise in the prices of Alcohol and Tobacco, Stimulants (Chat), Housing Repair and Maintenance, and Energy (Firewood and Charcoal), Medical care, Transport (fuel) and Jewelry (Gold).

Inflation based on comparison of Current vs. Last month at Country Level (month-on-month)

The month-on-month General CPI for January 2021 has showed an increase of 1.6 Percent as compared to the preceding month. The monthly inflation rate measures the price change between the two latest months. Although up to date, it can be affected by seasonal and other short term effects.

ሠንጠረዥ ሐ: በአገር አቀፍ ደረጃ የ12 ወራት ተንከባላይ አማካይ የዋጋ ግሽበት ሁኔታ

Table C: The Country Level 12 months Moving Average Inflation Rate

ወርና በጀት ዓመት	የዋጋ ግሽበት ሁኔታ			Budget Year and months
	አጠቃላይ የዋጋ ግሽበት	የምግብ ዋጋ ግሽበት	ምግብ ነክ ያልሆኑ የዋጋ ግሽበት	
	General Inflation	Food Inflation	Non-Food Inflation	
ሐምሌ 2009-ሰኔ 2010 (ዓመታዊ አማካይ)	10.6	11.0	11.0	July 2017 – June 2018 (Annual Average)
ሐምሌ 2010-ሰኔ 2011 (ዓመታዊ አማካይ)	13.7	12.8	14.9	July 2018 – June 2019 (Annual Average)
ሐምሌ 2011 - ሰኔ 2012 (ዓመታዊ አማካይ)	16.2	19.2	12.8	July 2019 – June 2020 (Annual Average)
መስከረም 2012	13.6	15.6	11.2	September 2019
ጥቅምት 2012	14.1	16.8	11.0	October 2019
ህዳር 2012	15.1	18.0	11.7	November 2019
ታህሳስ 2012	15.8	18.9	12.2	December 2019
ጥር 2012	16.4	19.8	12.6	January 2020
የካቲት 2012	17.3	20.9	13.1	February 2020
መጋቢት 2012	18.3	22.2	13.7	March 2020
ሚያዝያ 2012	19.1	23.1	14.4	April 2020
ግንቦት 2012	19.4	23.1	15.0	May 2020
ሰኔ 2012	19.9	23.3	15.9	June 2020
ሐምሌ 2012	20.5	23.7	16.6	July 2020
ነሐሴ 2012	20.6	23.6	17.0	August 2020
መስከረም 2013	20.6	23.4	17.2	September 2020
ጥቅምት 2013	20.6	23.4	17.3	October 2020
ህዳር 2013	20.5	23.2	17.1	November 2020
ታህሳስ 2013	20.4	23.1	17.0	December 2020
ጥር 2013	20.4	23.2	16.9	January 2021

ሠንጠረዥ መ: የዘንድሮውና የአምናው ተመሳሳይ ወሮች የሽማግሌት ዋጋ ኢንዱክስ ለውጥ ገጽጽ በአገር አቀፍ ደረጃ

Table D: Summary of Comparison of CPI Movements, Current vs. Last year's Similar Months at Country Level

ወርና በጀት ዓመት	የዋጋ ግሽበት ሁኔታ			Budget Year and months
	አጠቃላይ የዋጋ ግሽበት	የምግብ ዋጋ ግሽበት	ምግብ ነክ ያልሆኑ የዋጋ ግሽበት	
	General Inflation	Food Inflation	Non-Food Inflation	
ሐምሌ 2009-ሰኔ 2010 ዓመታዊ አማካይ	14.4	13.5	15.8	July 2017 – June 2018 (Annual Average)
ሐምሌ 2010-ሰኔ 2011 (ዓመታዊ አማካይ)	12.6	13.1	12.0	July 2018 – June 2019 (Annual Average)
ሐምሌ 2011 - ሰኔ 2012 (ዓመታዊ አማካይ)	19.9	23.3	15.8	July 2019 – June 2020 (Annual Average)
ጥር 2012	18.7	22.0	15.0	January 2020
የካቲት 2012	21.8	25.1	18.0	February 2020
መጋቢት 2012	22.6	26.9	17.6	March 2020
ሚያዝያ 2012	22.9	25.9	19.2	April 2020
ግንቦት 2012	19.8	20.3	19.1	May 2020
ሰኔ 2012	21.6	23.1	19.7	June 2020
ሐምሌ 2012	22.3	24.9	18.9	July 2020
ነሐሴ 2012	20.0	22.0	17.5	August 2020
መስከረም 2013	18.7	21.2	15.5	September 2020
ጥቅምት 2013	19.3	23.2	14.4	October 2020
ህዳር 2013	19.0	22.1	15.1	November 2020
ታህሳስ 2013	18.2	21.3	14.3	December 2020
ጥር 2013	19.2	23.1	14.5	January 2021

ሠንጠረዥ ሠ: የአሁኑና ያለፈው ወር የሽማግሌት ዋጋ ኢንዱክስ ለውጥ ንጽጽር በአገር አቀፍ ደረጃ

Table E: Summary of Comparison of CPI Movements, Current vs. Last month at Country Level

ወርና በጀት ዓመት	የዋጋ ግሽበት ሁኔታ			Budget Year and months
	አጠቃላይ የዋጋ ግሽበት	የምግብ ዋጋ ግሽበት	ምግብ ነክ ያልሆኑ የዋጋ ግሽበት	
	General Inflation	Food Inflation	Non-Food Inflation	
ሐምሌ 2009-ሰኔ 2010 (ዓመታዊ አማካይ)	1.3	1.1	1.5	July 2017 – June 2018 (Annual Average)
ሐምሌ 2010-ሰኔ 2011 (ዓመታዊ አማካይ)	1.2	1.5	0.8	July 2018 – June 2019 (Annual Average)
ሐምሌ 2011 - ሰኔ 2012 (ዓመታዊ አማካይ)	1.7	1.8	1.5	July 2019 – June 2020 (Annual Average)
ጥር 2012	0.7	0.5	1.0	January 2020
የካቲት 2012	3.0	3.7	2.1	February 2020
መጋቢት 2012	3.0	3.6	2.2	March 2020
ሚያዝያ 2012	2.1	2.8	1.1	April 2020
ግንቦት 2012	1.7	1.4	2.0	May 2020
ሰኔ 2012	2.9	4.1	1.4	June 2020
ሐምሌ 2012	2.0	3.1	0.5	July 2020
ነሐሴ 2013	0.5	0.8	0.0	August 2020
መስከረም 2013	0.6	0.6	0.5	September 2020
ጥቅምት 2013	0.4	0.9	-0.4	October 2020
ህዳር 2013	0.4	-0.4	1.5	November 2020
ታህሳስ 2013	-0.1	-1.4	1.6	December 2020
ጥር 2013	1.6	2.1	1.1	January 2021

የዘንድሮውና የአምናው ተመሳሳይ ወሮች የችርቻሮ ዋጋ መመዘኛ ጠቋሚ አሃዝ

ንፅፅር በአገር አቀፍ ደረጃ

Comparison of CPI Movements, Current vs Last year's Similar Months at Country Level

ከሠንጠረዥ(ሀ) መረዳት እንደሚቻለው የጥር ወር 2013 ዓ/ም የአገር አቀፍ ጠቅላላ የችርቻሮ ዋጋ ኢንዱክስ ከጥር ወር 2012 ዓ/ም ጠቅላላ ኢንዱክስ ጋር ሲነፃፀር በ19.2 ከመቶ ጭማሪ አሳይቷል። ለዚህ ጭማሪ ምክንያት የሆኑት ምግብና አልኮል ያልሆኑ መጠጦች 14.5 ከመቶ፣ መጠጥ፣ ሲጃራና ትምባሆ በ34.3 ከመቶ፣ ልብስና መጫሚያ በ10.7 ከመቶ፣ የቤት ኪራይ፣ የቤት መስሪያ እቃዎች፣ ውሃና ኢነርጂ በ11.5 ከመቶ፣ የቤት ዕቃዎች፣ የቤት ማስጫዎች፣ የቤት ቁሳቁስና የቤት ሠራተኛ ደመወዝ በ6.8 ከመቶ፣ ህክምና 29.9 ከመቶ፣ ትራንስፖርት 22.8 ከመቶ፣ መገናኛ በ5.0 ከመቶ፣ መዘናኛና ባህል 11.7 ከመቶ፣ ትምህርት በ7.5 ከመቶ፣ ሬስቶራንትና ሆቴሎች በ16.1 ከመቶ እና ሌሎች ዕቃዎችና አገልግሎቶች በ15.0 ከመቶ በየኢንዱክሶቻቸው ላይ ጭማሪ በማሳየታቸው ነው።

The January 2021 Country Level Consumer Price Index has increased by 19.2 percent as compared to January 2020 (Table 1(a)). This increase in the General Consumer Price Index is attributed to the rise observed in the indices of Food and Non-alcoholic beverages 23.1 percent, Alcoholic Beverages and Tobacco by 34.3 percent, Clothing and Footwear by 10.7 percent, House Rent, Construction Materials, Water and Fuel and Power by 11.5 percent, Furniture, Furnishings, Household Equipment and Operation by 6.8 percent, Health 29.9 percent, Transport by 22.8 percent, communication by 5.0 percent, Recreation and Culture by 11.7 percent, Education by 7.5 percent, Restaurant and Hotels 16.1 percent and Miscellaneous Goods by 15.0 percent.

ሠንጠረዥ(ለ) እንደሚያሳየው ካለፈው ዓመት ተመሳሳይ ወር ጋር ሲነፃፀር አብዛኛዎቹ የምግብ ክፍሎች ጭማሪ አሳይተዋል። ዳቦና እህል በ24.0 ከመቶ፣ ሥጋ በ10.8 ከመቶ፣ ዓሳና የባህር ምግቦች በ23.5፣ ከመቶ ወተት፣ አይብና ዕንቁላል በ19.0 ከመቶ፣ ዘይትና ቅባቶች በ34.6 ከመቶ፣ ፍራፍሬ 2.1 ከመቶ፣ አትክልት፣ ጥራጥሬ ፣ ድንችና ሌሎች ስራ ስሮች በ23.4 ከመቶ፣ ስኳር፣ ማርና ጅኮሌት በ11.5 ከመቶ፣ ሌሎች ምግቦች በ25.3 ከመቶ እና አልኮል ያልሆኑ መጠጦችና ቡና በ28.8 ከመቶ በየኢንዱክሶቻቸው ላይ ዕድገት አሳይተዋል።

Most of the components of Food index showed increase as compared to similar month last year (Table1(b)). Bread and Cereals by (24.0 percent), Meat (10.8 percent), Fish and Seafood by (23.5 percent), Milk, Cheese and Eggs (19.0 percent), Oil and Fats (34.6 percent), Fruits by (2.1 percent), Vegetables and Pulses, Potatoes and Tubers by (23.4 percent), Sugar, Honey and Chocolate declined by (11.5 percent), Other Food Products and spices n.e.c by (25.3 percent) and Non-Alcoholic beverages and Coffee by 28.8 percent).

የዘንድሮውና የአምናው ተመሳሳይ ወሮች የችርቻሮ ዋጋ መመዘኛ ጠቋሚ አሀዝ ንፅፅር በአገር አቀፍና በክልሎች ደረጃ

Comparison of CPI Movements, Current vs Last year's Similar Months at Regional Levels

ከሠንጠረዥ 2(ሀ) መረዳት እንደሚቻለው የጥር ወር 2013 ዓ/ም የአገር አቀፍ ጠቅላላ የችርቻሮ ዋጋ መመዘኛ ኢንዱክስ ከጥር ወር 2012 ዓ/ም ጠቅላላ ኢንዱክስ ጋር ሲነፃፀር በ19.2 ከመቶ ጭማሪ አሳይቷል። ለዚህ ጭማሪ አስተዋጽኦ ያደረጉት አዲስ አበባ በ17.4 ከመቶ፣ አፋር 12.9 ከመቶ፣ አማራ 15.3 ከመቶ፣ ቤኒሻንጉል ጉሙዝ በ24.9 ከመቶ፣ ድሬደዋ 17.7 ከመቶ፣ ጋምቤላ 24.9 ከመቶ፣ ሐረሪ በ19.7 ከመቶ፣ ኦሮሚያ በ19.4 ከመቶ፣ ደቡብ ብሄሮች ብሄረሰቦችና ሕዝቦች 25.0 ከመቶ፣ ሶማሌ በ11.0 ከመቶ እና ትግራይ በ28.1 ከመቶ ጭማሪ በማሳየታቸው ነው።

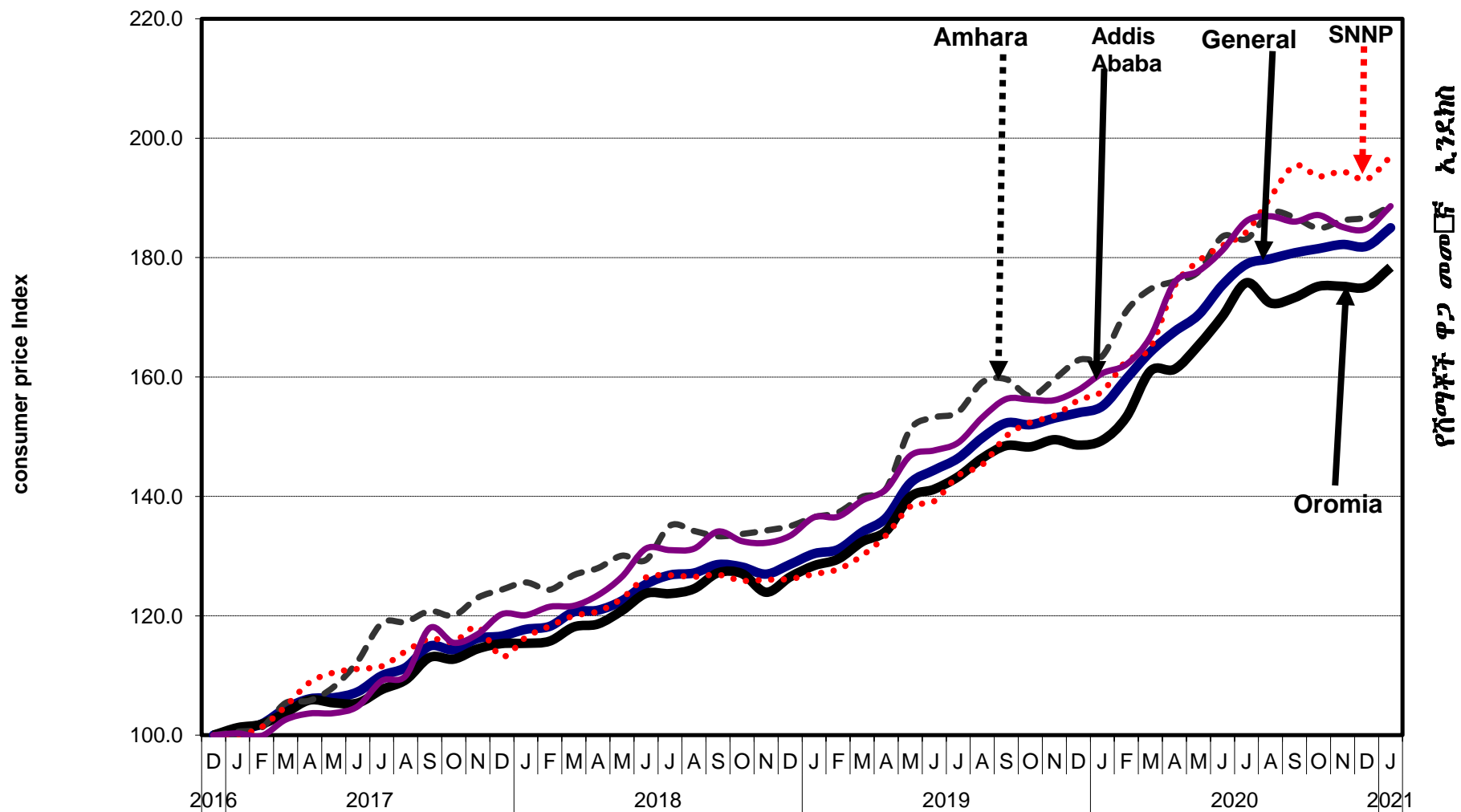
Table 2(a) also displays that the January 2021 Country level General Consumer Price Index has increased by 19.2 percent as compared to January 2020. This increase was attributed to the rise in the indices of its constituent regions; namely: Addis Ababa 17.4 percent, Afar by 12.9 percent, Amhara 15.3 percent, Benishangul Gumuz by 24.9 percent, Dire Dawa 17.7 percent, Gambella 24.9 percent, Harari by 19.7 percent, Oromia 19.4 percent, SNNP by 25.0 percent, Somali by 11.0 percent and Tigray by 28.1 percent.

ሠንጠረዥ 2(ለ) እንደሚያሳየው ለምግብ ኢንዱክስ በ23.1 ከመቶ መጨመር ምክንያት ሆኑት አዲስ አበባ በ22.3 ከመቶ፣ አፋር በ18.5 ከመቶ፣ አማራ በ18.6 ከመቶ፣ ቤኒሻንጉል ጉሙዝ በ26.9 ከመቶ፣ ድሬደዋ በ29.7 ከመቶ፣ ጋምቤላ በ26.9 ከመቶ፣ ሐረሪ በ20.6 ከመቶ፣ ኦሮሚያ 23.9 ከመቶ፣ ደቡብ ብሄሮች ብሄረሰቦችና ሕዝቦች በ29.2 ከመቶ፣ ሶማሌ 10.5 ከመቶ እና ትግራይ በ36.3 ከመቶ በምግብ ኢንዱክሶቻቸው ላይ ጭማሪ አሳይተዋል።

Table 2(b) reveals the rise in the food index by 23.1 percent is due to the rise in the indices of the regions namely: Addis Ababa by 22.3 percent, Afar by 18.5 percent, Amhara 18.6 percent, Benishangul Gumuz by 26.9 percent, Dire Dawa 29.7 percent, Gambella 26.9 percent, Harari 20.6 percent, Oromia 23.9 percent, SNNP 29.2 percent, Somali 10.5 percent and Tigray 36.3 percent.

General CPI for Country Level and Major Regions

የሽያጭ ዋጋ ኢንዱክስ ለአገር አቀፍና ለዋና ዋና ክልሎች



ወንጠረዥ 1፤ ጠቅላላ የሽያጭ ዋጋ መመዘኛ ለንዲክስና በሥራ የተካተቱ ክፍሎች በአገር አቀፍ ደረጃ
 ታህሳስ 2009 = 100
 Table 1a: General Consumer Price Index and Its Components Country Level
 December 2016 = 100

ወርና ዓመት	ጠቅላላ ኢንዱክስ	ምግብና አልኮሎል ያልሆኑ መጠጦች	ምግብ ነክ ያልሆኑ ኢንዱክስ	Non-food Consumer Price Index Components											ወርና ዓመት
				መጠጥ ሲጃራና ትምባሆ	ሰብስቦ መጫጫ ያ	የቤት ኪራይ የቤት መሥሪያ ዕቃዎች ውሃ ነዳጅና ሃይል	የቤት ማስገጫዎች የቤት ቁሳቁስና የቤት ሠራተኛ ደሞዝ	ህክምና	ትራንስፖርት	መገናኛ ባህሪ	መዝናኛና ተምህርት	ሬስቶራንትና ሆቴሎች	ሌሎች ዕቃዎችና አገልግሎቶች		
Month an Year	General Index	Food and Non-Alcoholic Beverages	Non-Food Index	Alcoholic Beverages and Tobacco	Clothing and Footwear	Housing, Water, Electricity, Gas and Other Fuels	Furnishings, Household Equipment and Routine Maintenance of the House	Health	Transport	Communication	Recreation and Culture	Education	Restaurants and Hotels	Misellaneous Goods and services	Month an Year
ታህሳስ 2009	100.0	100.0	100.0	100.0	100.0	100.0	100.0	100.0	100.0	100.0	100.0	100.0	100.0	100.0	December 2016
ሐምሌ 2009 - ሰኔ 2010	117.3	118.0	116.5	110.2	124.5	121.0	119.5	97.8	110.0	104.5	116.5	108.2	113.5	108.0	July 2017 - June 2018
ሐምሌ 2010 - ሰኔ 2011	132.0	133.5	130.3	117.7	147.2	132.8	139.5	112.2	124.1	103.7	125.5	124.8	129.6	123.6	July 2018 - June 2019
ሐምሌ 2011 - ሰኔ 2012	158.3	164.7	151.0	139.7	160.5	158.6	152.9	130.1	153.7	104.4	138.7	134.1	153.4	142.6	July 2019 - June 2020
2011															2018/2019
ሐምሌ 2010	126.7	127.1	126.2	111.2	139.7	131.4	134.1	109.7	114.9	109.1	121.9	110.1	122.8	119.4	July 2018
ነሐሴ 2010	127.0	128.2	125.8	112.2	139.6	130.8	133.1	105.7	116.1	107.7	123.2	116.3	122.1	118.5	August "
መስከረም 2011	128.4	129.4	127.4	113.5	144.1	131.6	134.6	106.1	115.5	103.3	122.7	126.2	126.3	120.8	September "
ጥቅምት 2011	128.1	128.6	127.6	109.8	146.6	132.0	135.7	109.6	117.0	101.8	124.3	126.3	126.8	118.4	October "
ሀዳር 2011	126.7	127.8	125.5	111.9	141.1	127.1	135.4	109.6	119.3	101.3	124.6	126.6	126.8	119.8	November "
ታህሳስ 2011	128.8	128.6	129.1	115.2	147.4	131.0	137.8	112.6	122.9	100.1	125.8	124.5	130.7	121.1	December "
ጥር 2011	130.7	130.1	131.4	124.0	149.9	132.6	140.3	112.4	126.7	101.0	125.1	125.3	130.1	122.5	January 2019
የካቲት 2011	131.1	131.5	130.7	117.7	152.1	130.7	141.3	115.1	128.4	101.4	127.5	126.4	130.4	123.4	February "
መጋቢት 2011	134.0	134.3	133.6	121.8	150.8	135.9	142.8	120.6	131.5	102.1	127.2	127.3	131.9	125.0	March "
ሚያዝያ 2011	136.4	139.2	133.3	124.7	149.1	134.2	144.3	117.5	129.8	103.6	126.8	129.8	131.9	127.9	April "
ግንቦት 2011	142.3	147.6	136.1	126.6	153.5	137.8	146.6	114.9	133.5	106.2	129.3	128.9	131.8	133.1	May "
ሰኔ 2011	144.3	150.2	137.5	124.0	152.3	138.9	148.5	111.9	133.6	106.6	127.2	129.9	143.4	133.3	June "
2012															2019/2020
ሐምሌ 2011	146.3	152.6	139.2	123.7	159.3	140.5	149.9	116.1	134.3	106.1	126.5	131.5	143.3	133.4	July 2019
ነሐሴ 2011	149.8	157.6	140.8	126.3	152.8	145.8	150.2	120.0	133.8	106.5	129.3	130.6	143.4	134.8	August "
መስከረም 2012	152.3	159.5	144.1	130.9	157.1	147.9	150.0	124.6	140.0	104.3	133.7	135.7	150.9	138.5	September "
ጥቅምት 2012	152.1	158.4	144.8	131.8	156.8	149.8	150.8	124.0	139.8	103.7	139.1	131.8	150.4	139.1	October "
ሀዳር 2012	153.1	159.1	146.1	130.6	158.6	152.8	151.1	124.5	138.1	104.7	144.9	136.0	150.4	138.8	November "
ታህሳስ 2012	154.0	157.9	149.5	132.1	160.5	158.7	152.3	131.2	140.6	100.1	140.1	134.4	155.1	141.4	December "
ጥር 2012	155.1	158.7	151.0	127.4	162.8	162.6	153.7	124.7	143.7	99.4	144.7	138.1	155.1	143.8	January 2020
የካቲት 2012	159.5	164.5	153.7	132.4	155.7	169.6	152.7	130.1	147.2	101.1	143.3	132.8	157.1	145.3	February "
መጋቢት 2012	164.2	170.4	157.1	152.5	160.7	169.5	154.4	136.0	148.8	102.5	141.5	132.0	157.8	147.5	March "
ሚያዝያ 2012	167.6	175.2	158.9	158.8	161.9	168.7	155.5	139.0	166.3	103.9	140.9	134.7	157.9	148.3	April "
ግንቦት 2012	170.5	177.6	162.3	165.1	164.9	168.3	156.0	152.4	197.3	112.1	142.7	135.1	157.9	149.4	May "
ሰኔ 2012	175.4	184.8	164.6	165.2	174.5	168.6	157.8	138.9	214.1	108.4	137.4	137.1	162.1	150.8	June "
2013															2019/2020
ሐምሌ 2012	179.0	190.7	165.5	159.3	171.0	170.6	157.9	151.1	227.8	105.6	140.2	127.1	163.2	152.6	July 2020
ነሐሴ 2012	179.8	192.2	165.5	156.3	170.5	171.2	159.1	141.6	232.1	106.4	139.6	123.8	163.2	154.2	August "
መስከረም 2013	180.8	193.4	166.4	159.9	169.3	174.7	159.2	149.5	194.9	106.3	140.8	140.0	169.3	159.2	September "
ጥቅምት 2013	181.5	195.1	165.8	163.4	175.9	171.6	159.3	149.2	170.8	105.6	147.3	146.3	174.3	159.4	October "
ሀዳር 2013	182.2	194.3	168.2	167.8	178.0	176.0	159.2	150.9	170.5	103.8	153.2	145.5	174.3	161.3	November "
ታህሳስ 2013	182.0	191.5	171.0	175.3	178.0	176.7	160.8	167.7	171.9	103.6	161.1	144.8	181.6	163.1	December "
ጥር 2013	185.0	195.5	172.9	171.2	180.2	181.2	164.2	162.0	176.4	104.3	161.7	148.4	180.1	165.4	January 2021
	19.2	23.1	14.5	34.3	10.7	11.5	6.8	29.9	22.8	5.0	11.7	7.5	16.1	15.0	

ወንጠረዥ 30፤ ጠቅላላ የሽያጭ ዋጋ መመዘኛ ለንግድ ከተማ አስተዳደር

ታህሳስ 2009 = 100

Table 3a: General Consumer Price Index and Its Components for Addis Ababa City Administration
December 2016 = 100

ወርና ዓመት	ጠቅላላ ኢንዱክስ	ምግብና አልኮሎል ያልሆኑ መጠቀሞች	ምግብ ነክ ያልሆኑ ኢንዱክስ	Non-food Consumer Price Index Components											ወርና ዓመት
				መጠቀሚያ ስጦታዎች	ሰብስቦ መጫወቻ	የቤት ኪራይ ማስገጫዎች የቤት ጭራሪያ ዕቃዎች ውሃ ንግድና ሃይል	የቤት ማስገጫዎች የቤት ጭራሪያ ዕቃዎች የቤት ሠራተኛ ደሞዝ	ህክምና	ትራንስፖርት	መገናኛ ቤታላቤ	መዝናኛና ባህል	ትምህርት	ሬስቶራንትና ሆቴሎች	ሌሎች ዕቃዎችና አገልግሎቶች	
Month an Year	General Index	Food and Non-Alcoholic Beverages	Non-Food Index	Alcoholic Beverages and Tobacco	Clothing and Footwear	Housing, Water, Electricity, Gas and Other Fuels	Furnishings/ Household Equipment and Routine Maintenance of the House	Health	Transport	Communication	Recreation and Culture	Education	Restaurants and Hotels	Misellaneous Goods and services	Month an Year
ታህሳስ 2009	100.0	100.0	100.0	100.0	100.0	100.0	100.0	100.0	100.0	100.0	100.0	100.0	100.0	100.0	December 2016
ሐምሌ 2009 - ሰኔ 2010	119.5	112.6	124.8	108.3	104.0	153.3	123.5	119.2	107.6	116.3	109.1	100.0	117.7	109.5	July 2017 - June 2018
ሐምሌ 2010 - ሰኔ 2011	137.0	129.4	142.7	121.1	116.7	179.8	144.9	134.6	117.2	118.6	113.4	119.6	138.8	125.8	July 2018 - June 2019
ሐምሌ 2011 - ሰኔ 2012	162.7	163.0	162.5	144.0	128.6	216.7	161.1	146.3	141.3	116.1	121.9	129.1	150.7	141.6	July 2019 - June 2020
2011															2018/2019
ሐምሌ 2010	131.0	123.8	136.5	113.8	112.0	171.7	137.9	132.6	110.0	116.8	112.4	100.1	134.1	121.4	July 2018
ነሐሴ 2010	131.2	123.7	137.0	116.8	113.5	170.7	136.3	126.3	113.4	116.8	112.6	113.2	136.0	122.5	August 2018
መስከረም 2011	134.1	128.1	138.7	114.8	115.9	172.0	135.3	131.3	117.4	116.8	112.3	126.7	138.2	123.3	September 2018
ጥቅምት 2011	132.5	122.7	139.9	117.4	116.0	171.7	141.8	139.0	117.5	121.1	111.5	124.2	138.2	120.9	October 2018
ሀዳር 2011	132.2	122.7	139.4	117.3	119.7	170.8	140.6	134.4	114.8	119.3	111.7	122.2	138.2	124.1	November 2018
ታህሳስ 2011	134.2	125.8	140.6	113.7	110.8	175.9	145.0	133.9	116.1	120.8	114.6	120.5	136.9	124.4	December 2018
ጥር 2011	136.5	126.4	144.2	117.8	116.6	183.8	147.4	136.1	116.2	122.7	114.1	121.7	136.9	126.4	January 2019
የካቲት 2011	136.6	126.9	144.0	130.3	115.2	184.1	146.0	136.1	118.7	117.5	111.9	119.2	136.9	126.4	February 2019
መጋቢት 2011	139.3	129.1	147.1	130.3	117.0	191.8	147.5	126.7	118.4	117.5	112.2	121.3	142.4	128.1	March 2019
ሚያዝያ 2011	141.2	132.8	147.6	128.2	120.9	188.6	151.4	139.8	120.4	117.5	112.4	124.1	142.4	127.5	April 2019
ግንቦት 2011	146.8	144.5	148.6	128.8	120.8	189.5	153.5	137.2	122.1	118.3	118.0	121.1	142.4	132.2	May 2019
ሰኔ 2011	147.7	146.8	148.4	124.2	121.6	186.9	155.7	141.9	122.0	118.3	116.6	120.5	143.9	132.4	June 2019
2012															2019/2020
ሐምሌ 2011	149.0	149.1	148.9	127.3	122.7	188.7	154.0	140.5	122.1	118.3	115.4	121.7	143.9	133.1	July 2019
ነሐሴ 2011	153.2	157.4	150.0	124.4	124.5	189.9	156.3	147.4	122.1	118.3	117.3	119.6	143.9	134.9	August 2019
መስከረም 2012	156.3	160.1	153.4	128.4	122.7	198.8	157.2	133.5	126.5	118.3	121.9	135.0	146.8	135.4	September 2019
ጥቅምት 2012	156.3	157.9	155.2	124.9	118.6	205.2	157.3	141.0	127.4	118.3	123.8	125.9	146.8	138.9	October 2019
ሀዳር 2012	156.1	156.3	156.0	121.5	121.3	206.5	160.3	133.0	125.3	118.3	131.3	133.9	146.8	140.1	November 2019
ታህሳስ 2012	157.8	157.1	158.4	129.2	124.2	210.3	162.5	141.1	125.1	113.7	120.4	125.4	154.6	141.5	December 2019
ጥር 2012	160.6	158.5	162.2	134.7	126.0	220.0	164.6	139.9	124.3	114.2	123.9	140.1	154.6	142.6	January 2020
የካቲት 2012	162.1	160.6	163.3	133.3	134.1	221.2	162.2	157.3	123.9	114.6	124.0	127.9	154.6	142.3	February 2020
መጋቢት 2012	166.7	163.5	169.2	181.2	134.7	236.0	164.9	154.1	124.8	114.9	125.3	128.3	153.0	146.2	March 2020
ሚያዝያ 2012	175.8	172.0	178.6	175.8	139.8	244.1	167.5	158.1	189.5	114.6	118.9	127.5	153.0	145.5	April 2020
ግንቦት 2012	177.7	176.0	178.9	172.3	136.9	246.3	165.2	161.4	189.9	114.8	121.0	128.4	153.0	146.2	May 2020
ሰኔ 2012	181.2	187.7	176.2	175.0	137.9	233.2	161.8	147.8	195.1	115.1	119.7	135.9	157.8	152.1	June 2020
2013															2019/2020
ሐምሌ 2012	186.1	196.8	177.9	183.6	150.8	235.5	165.4	158.1	190.8	113.9	122.6	117.2	157.8	149.6	July 2020
ነሐሴ 2012	186.9	197.5	178.9	175.7	147.0	235.5	167.1	162.1	200.4	115.2	122.4	105.6	157.8	156.5	August 2020
መስከረም 2013	186.0	198.8	176.3	178.9	150.3	238.5	164.7	167.8	153.9	115.9	121.2	131.4	159.0	156.3	September 2020
ጥቅምት 2013	187.1	199.2	177.9	174.9	153.7	240.5	169.3	162.1	150.8	115.3	132.0	145.1	159.0	159.1	October 2020
ሀዳር 2013	185.1	194.5	178.0	171.8	155.7	240.4	169.8	165.0	151.2	115.6	132.8	142.1	159.0	157.4	November 2020
ታህሳስ 2013	185.0	189.5	181.6	178.2	156.1	248.5	170.5	181.6	146.8	115.7	131.6	142.4	164.3	160.5	December 2020
ጥር 2013	188.6	193.7	184.6	178.2	160.5	251.6	174.3	189.4	154.0	115.1	131.8	150.9	164.3	161.1	January 2021

ወንጠረዥ 4፤ ጠቅላላ የሽያጭ ዋጋ መመዘኛ ኢንዱስትሪ በሥራ የተካተቱ ክፍሎች ለአፋር ብሔራዊ ክልላዊ መንግስት
 ታህሳስ 2009 = 100

Table 4a: General Consumer Price Index and Its Components for Afar National Regional State
 December 2016 = 100

ወርና ዓመት	ጠቅላላ ኢንዱስትሪ	ምግብና አልኮሎል ያልሆኑ መጠጦች	ምግብ ነክ ያልሆኑ ኢንዱስትሪ	Non-food Consumer Price Index Components											ወርና ዓመት
				መጠጥ ሲጃራና ትምባሆ	ልብስና መጫጫ ያ	የቤት ኪራይ የቤት መሥሪያ ዕቃዎች ውሃ ንዳጅና ሃይል	የቤት ማስገጫዎች የቤት ቁሳቁስና የቤት ሠራተኛ ደሞዝ	ህክምና	ትራንስፖርት	መገናኛ ባህሪ	መዝናኛና ጥሪ	ትምህርት	ሬስቶራንትና ሆቴሎች	ሌሎች ዕቃዎችና አገልግሎቶች	
Month an Year	General Index	Food and Non-Alcoholic Beverages	Non-Food Index	Alcoholic Beverages and Tobacco	Clothing and Footwear	Housing, Water, Electricity, Gas and Other Fuels	Furnishings Household Equipment and Routine Maintenance of the House	Health	Transport	Communication	Recreation and Culture	Education	Restaurants and Hotels	Misellaneous Goods and services	Month an Year
ታህሳስ 2009	100.0	100.0	100.0	100.0	100.0	100.0	100.0	100.0	100.0	100.0	100.0	100.0	100.0	100.0	December 2016
ሐምሌ 2009 - ሰኔ 2010	113.7	114.7	112.7	113.6	115.6	117.4	105.4	111.0	120.7	100.0	122.5	97.2	106.7	107.5	July 2017 - June 2018
ሐምሌ 2010 - ሰኔ 2011	124.4	127.7	121.3	102.4	125.5	127.0	141.6	97.3	124.5	102.7	165.1	110.7	120.2	121.9	July 2018 - June 2019
ሐምሌ 2011 - ሰኔ 2012	149.5	161.2	138.2	112.6	145.5	133.4	162.1	103.2	198.0	103.7	180.7	119.0	154.5	145.9	July 2019 - June 2020
2011															2018/2019
ሐምሌ 2010	120.4	122.1	118.8	124.6	125.5	118.3	115.9	109.8	123.3	100.9	131.3	100.0	113.4	116.9	July 2018
ነሐሴ 2010	120.2	123.3	117.1	114.9	123.6	118.3	117.6	108.9	109.9	100.3	132.5	100.0	117.0	120.2	August "
መስከረም 2011	121.6	127.1	116.2	105.5	124.3	116.8	116.4	108.6	123.3	100.3	133.8	105.6	121.2	119.4	September "
ጥቅምት 2011	122.3	125.8	118.9	107.3	118.7	118.4	145.0	93.5	127.6	100.3	183.8	115.1	121.2	123.3	October "
ሀዳር 2011	119.5	122.8	116.3	105.5	121.1	111.5	143.5	92.7	123.3	102.5	167.6	109.8	121.2	114.3	November "
ታህሳስ 2011	121.5	124.5	118.6	103.5	125.7	118.5	143.3	93.3	123.4	102.1	170.9	107.5	118.1	117.5	December "
ጥር 2011	124.1	126.8	121.4	103.3	123.0	127.3	149.5	91.8	123.3	103.4	177.3	114.4	118.1	120.6	January 2019
የከተት 2011	124.3	124.7	123.9	91.3	122.6	142.0	151.6	91.2	123.3	104.0	174.8	116.4	118.1	123.4	February "
መጋቢት 2011	124.3	126.7	122.0	86.2	123.9	135.5	154.9	92.3	123.3	104.6	176.1	114.4	116.4	124.9	March "
ሚያዝያ 2011	129.9	128.1	131.6	101.9	128.1	160.7	152.2	93.9	123.3	104.6	180.4	110.6	116.4	120.1	April "
ግንቦት 2011	130.9	138.1	123.9	93.3	136.8	127.8	156.6	94.9	123.3	104.3	175.4	115.9	116.4	133.0	May "
ሰኔ 2011	134.3	142.3	126.5	91.8	132.7	129.3	152.4	96.0	146.2	104.5	177.7	118.5	145.3	129.2	June "
2012															2019/2020
ሐምሌ 2011	137.4	146.4	128.7	93.4	134.4	129.5	152.9	96.6	173.3	102.8	166.5	118.5	145.3	142.5	July 2019
ነሐሴ 2011	139.5	151.9	127.5	91.9	134.2	126.8	152.2	103.9	164.3	103.5	160.9	118.5	145.3	139.2	August "
መስከረም 2012	144.5	156.9	132.6	100.5	136.2	135.6	153.8	108.1	173.3	104.0	167.0	107.3	146.1	141.4	September "
ጥቅምት 2012	148.9	161.0	137.2	104.3	136.0	151.0	158.1	98.0	173.3	103.1	170.0	116.7	146.1	139.9	October "
ሀዳር 2012	146.4	160.5	132.9	101.3	133.0	135.1	163.2	100.0	173.3	103.1	176.4	109.8	146.1	145.8	November "
ታህሳስ 2012	148.0	157.8	138.6	107.9	139.2	138.4	161.2	99.6	195.9	102.8	173.5	120.0	167.4	146.4	December "
ጥር 2012	149.3	155.7	143.1	108.9	150.4	143.4	163.5	97.5	218.4	102.8	189.6	121.9	167.4	144.7	January 2020
የከተት 2012	151.6	157.4	146.1	118.1	151.1	141.8	165.4	99.0	218.4	104.0	190.2	112.2	181.2	148.4	February "
መጋቢት 2012	152.3	162.9	142.1	123.0	161.6	122.0	166.8	132.7	218.4	104.0	196.5	121.9	147.8	151.0	March "
ሚያዝያ 2012	153.8	169.1	138.9	126.1	152.4	122.6	165.2	98.5	218.4	104.6	187.9	123.5	147.8	148.1	April "
ግንቦት 2012	156.7	175.4	138.6	137.3	147.5	122.9	167.6	100.4	173.3	104.6	188.7	121.5	147.8	152.0	May "
ሰኔ 2012	165.5	179.4	152.0	138.7	170.3	131.3	175.6	104.6	275.2	104.6	201.4	136.6	165.4	150.9	June "
2013															2019/2020
ሐምሌ 2012	172.4	177.4	167.5	185.9	167.6	165.5	173.1	102.2	275.2	104.6	191.7	136.6	165.4	147.8	July 2020
ነሐሴ 2012	170.1	182.2	158.3	132.9	166.4	152.4	169.8	100.1	346.7	104.6	187.9	141.4	165.4	154.3	August "
መስከረም 2013	170.0	179.9	160.3	159.3	170.3	140.3	168.9	117.0	346.7	104.6	188.8	144.9	166.2	150.0	September "
ጥቅምት 2013	169.8	187.9	152.3	126.8	169.4	147.8	170.1	117.5	218.4	104.6	193.3	146.6	166.2	146.1	October "
ሀዳር 2013	169.3	189.6	149.7	144.1	171.6	126.4	169.9	117.1	218.4	104.6	210.4	127.3	166.2	151.5	November "
ታህሳስ 2013	169.3	185.0	154.0	137.8	173.6	140.3	175.4	116.5	218.4	104.6	208.9	116.8	169.7	155.2	December "
ጥር 2013	168.6	184.4	153.3	148.1	170.0	136.5	174.5	138.2	173.3	104.6	220.8	114.7	166.2	162.8	January 2021

ወንጠረዥ 50፤ ጠቅላላ የሽያጭ ዋጋ መመዘኛ ኢንዱስትሪ ቦሌና የተካተቱ ክፍሎች ለአማራ ብሔራዊ አልላዊ መንግስት
 ታህሳስ 2009 = 100

Table 5a: General Consumer Price Index and Its Components for Amhara National Regional State
 December 2016 = 100

ወርና ዓመት	ጠቅላላ ኢንዱስትሪ	ምግብና አልኮሎሊክ ያልሆኑ መጠጦች	ምግብ ነክ ያልሆኑ ኢንዱስትሪ	Non-food Consumer Price Index Components											ወርና ዓመት
				መጠጥ ሲጃራና ትምባሆ	ልብስና መጫጫ ያ	የቤት ኪራይ የቤት መሥሪያ ሰዎች ውሃ ንግድና ሃይል	የቤት ማስገጫዎች የቤት ቁሳቁስና የቤት ሠራተኛ ደሞዝ	ሀኪምና	ትራንስፖርት	መገናኛ ባህሪ	መዝናኛና ባህሪ	ትምህርት	ሬስቶራንትና ሆቴሎች	ሌሎች ሰዎችና አገልግሎቶች	
Month an Year	General Index	Food and Non-Alcoholic Beverages	Non-Food Index	Alcoholic Beverages and Tobacco	Clothing and Footwear	Housing, Water, Electricity, Gas and Other Fuels	Furnishings Household Equipment and Routine Maintenance of the House	Health	Transport	Communication	Recreation and Culture	Education	Restaurants and Hotels	Misellaneous Goods and services	Month an Year
ታህሳስ 2009	100.0	100.0	100.0	100.0	100.0	100.0	100.0	100.0	100.0	100.0	100.0	100.0	100.0	100.0	December 2016
ሐምሌ 2009 - ሰኔ 2010	124.1	122.0	126.5	140.1	117.5	141.1	116.0	139.2	105.2	108.4	131.0	119.0	113.4	109.0	July 2017 - June 2018
ሐምሌ 2010 - ሰኔ 2011	138.9	138.2	139.7	144.8	140.9	152.3	134.7	174.7	117.8	125.4	141.7	124.4	122.0	122.3	July 2018 - June 2019
ሐምሌ 2011 - ሰኔ 2012	166.5	171.0	161.5	172.9	152.2	176.5	148.5	200.3	145.6	136.2	151.4	135.4	150.1	132.8	July 2019 - June 2020
2011															
ሐምሌ 2010	135.0	134.7	135.4	141.6	133.6	149.1	128.0	166.8	107.2	131.6	139.7	119.0	115.8	128.6	July 2018
ነሐሴ 2010	134.0	134.9	133.0	141.5	131.1	147.9	127.2	149.9	106.2	122.9	143.5	119.0	111.6	127.5	August "
መስከረም 2011	133.2	132.2	134.2	141.6	133.2	148.5	128.1	149.6	107.2	132.0	139.6	119.0	115.8	116.4	September "
ጥቅምት 2011	133.9	132.7	135.3	141.1	136.3	150.2	127.0	167.2	111.2	118.8	143.4	120.8	115.8	118.6	October "
ሀዳር 2011	133.5	132.4	134.7	142.0	139.5	146.7	127.7	168.5	116.4	117.7	141.8	124.2	115.8	117.9	November "
ታህሳስ 2011	136.1	133.4	139.0	140.2	143.0	150.6	134.8	179.2	120.6	109.4	141.6	116.7	124.4	120.9	December "
ጥር 2011	137.8	134.8	141.1	144.3	142.9	154.0	138.5	181.8	123.9	112.7	139.6	115.3	124.4	119.5	January 2019
የከተማ 2011	137.4	135.9	139.0	146.4	142.9	148.2	134.7	186.8	117.6	118.5	143.2	126.0	124.4	120.2	February "
መጋቢት 2011	140.0	139.2	140.8	148.1	143.6	146.8	139.3	221.3	126.8	123.1	143.4	123.5	125.5	121.6	March "
ሚያዝያ 2011	141.4	141.2	141.5	148.7	146.0	149.2	141.0	183.3	126.8	128.9	144.1	136.4	125.5	123.4	April "
ግንቦት 2011	151.3	151.4	151.1	153.2	150.4	170.5	143.5	183.2	128.2	145.5	142.5	136.6	125.5	127.5	May "
ሰኔ 2011	153.2	155.3	150.9	148.9	148.4	165.6	146.5	159.4	121.5	143.6	137.9	136.6	139.4	126.1	June "
2012															2019/2020
ሐምሌ 2011	154.1	158.1	149.6	145.3	150.8	160.8	147.5	176.3	123.1	141.7	137.8	136.6	139.4	125.4	July 2019
ነሐሴ 2011	159.1	163.4	154.3	146.3	151.3	172.2	144.5	203.3	119.1	138.1	145.9	136.6	139.4	130.6	August "
መስከረም 2012	159.6	162.7	156.1	149.7	143.1	175.3	141.5	200.1	119.4	132.2	148.7	130.8	149.2	127.7	September "
ጥቅምት 2012	156.8	157.3	156.3	148.6	147.3	175.3	145.4	192.1	120.2	130.1	142.4	135.0	147.8	128.6	October "
ሀዳር 2012	159.6	161.3	157.7	148.9	151.6	176.3	147.0	192.8	120.0	137.6	152.1	142.4	147.8	129.4	November "
ታህሳስ 2012	162.8	164.3	161.0	167.9	151.1	176.6	147.9	217.4	129.0	111.3	152.3	139.0	155.2	131.7	December "
ጥር 2012	163.5	166.4	160.3	169.1	151.3	173.4	147.9	199.2	149.2	111.3	173.4	121.2	155.2	130.4	January 2020
የከተማ 2012	171.0	174.3	167.3	178.6	152.7	185.6	150.2	206.7	147.9	120.5	161.7	129.9	160.2	132.9	February "
መጋቢት 2012	174.7	181.9	166.7	197.0	153.2	182.4	150.4	217.4	148.0	129.4	150.0	127.0	152.1	136.6	March "
ሚያዝያ 2012	176.0	184.2	166.8	215.6	157.1	176.6	150.5	202.7	161.6	134.4	155.7	141.0	152.1	136.1	April "
ግንቦት 2012	177.6	186.0	168.3	216.1	157.7	172.4	153.9	195.1	190.6	185.5	152.5	142.0	152.1	137.4	May "
ሰኔ 2012	183.5	192.2	173.7	191.9	158.8	191.0	155.8	200.1	218.5	161.9	143.7	143.1	150.2	146.4	June "
2013															2019/2020
ሐምሌ 2012	183.1	199.0	165.3	190.0	159.9	165.6	154.6	250.3	228.4	146.6	141.2	130.9	150.2	145.1	July 2020
ነሐሴ 2012	187.5	201.2	172.3	190.7	158.4	184.2	155.5	205.8	258.4	154.1	140.6	136.7	150.2	146.0	August "
መስከረም 2013	186.7	199.8	172.0	200.3	161.0	183.6	155.6	212.0	158.8	147.6	138.6	130.6	159.6	160.5	September "
ጥቅምት 2013	184.9	200.4	167.6	201.7	162.7	172.7	157.8	195.5	152.6	147.6	153.1	136.1	159.6	150.1	October "
ሀዳር 2013	186.2	198.6	172.2	204.8	165.4	187.7	156.8	184.8	137.2	134.4	159.7	138.3	159.6	149.3	November "
ታህሳስ 2013	186.7	194.7	177.7	215.1	167.2	187.5	160.2	239.9	142.0	134.4	165.5	140.6	171.7	152.1	December "
ጥር 2013	188.6	197.4	178.7	217.3	168.2	191.5	163.7	191.9	141.2	134.4	170.7	136.3	171.7	155.0	January 2021

ወንጠረዥ 6ሀ፤ ጠቅላላ የሽያጭ ዋጋ መመዘኛ ኢንዱስትሪ በሥራ የተካተቱ ክፍሎች ለቤተሰብ ብሔራዊ ክልላዊ መንግስት
 ታህሳስ 2009 = 100

Table 6a: General Consumer Price Index and Its Components for Beneshangul-Gumuz National Regional State
 December 2016 = 100

ወርና ዓመት	ጠቅላላ ኢንዱስትሪ	ምግብና አልኮሎል ያልሆኑ መጠጦች	ምግብ ነክ ያልሆኑ ኢንዱስትሪ	Non-food Consumer Price Index Components											ወርና ዓመት
				መጠጥ ሲጃራና ትምባሆ	ሰብስቦች ማጫማያ	የቤት ኪራይ ማስገጫዎች የቤት ጭራሪያ ዕቃዎች ጭራሪያ ሃይል	የቤት ጭራሪያዎች የቤት ጭራሪያዎች የቤት ሠራተኛ ደምዘ	ህክምና	ትራንስፖርት	መገናኛ ቤታትኖ	መዝናኛና ባህል	ትምህርት	ሬስቶራንትና ሆቴሎች	ሌሎች ዕቃዎችና አገልግሎቶች	
Month an Year	General Index	Food and Non-Alcoholic Beverages	Non-Food Index	Alcoholic Beverages and Tobacco	Clothing and Footwear	Housing, Water, Electricity, Gas and Other Fuels	Furnishings Household Equipment and Routine Maintenance of the House	Health	Transport	Communication	Recreation and Culture	Education	Restaurants and Hotels	Misellaneous Goods and services	Month an Year
ታህሳስ 2009	100.0	100.0	100.0	100.0	100.0	100.0	100.0	100.0	100.0	100.0	100.0	100.0	100.0	100.0	December 2016
ሐምሌ 2009 - ሰኔ 2010	116.1	120.1	112.4	101.0	97.6	101.4	126.4	129.7	119.0	100.0	168.5	100.0	135.1	109.4	July 2017 - June 2018
ሐምሌ 2010 - ሰኔ 2011	133.5	133.8	133.2	114.9	114.3	104.9	152.7	189.8	121.4	98.9	179.4	104.2	193.0	122.9	July 2018 - June 2019
ሐምሌ 2011 - ሰኔ 2012	165.7	173.8	158.0	156.0	135.2	126.5	172.1	193.3	133.5	100.0	230.5	118.8	228.4	151.1	July 2019 - June 2020
2011															2018/2019
ሐምሌ 2010	123.6	127.8	119.7	103.4	103.3	102.0	147.8	191.0	117.7	100.0	176.5	100.0	138.3	121.2	July 2018
ነሐሴ 2010	126.3	128.2	124.5	101.3	104.6	102.5	149.2	188.2	117.7	100.0	174.1	100.0	166.4	121.0	August "
መስከረም 2011	127.4	131.5	123.6	113.9	100.8	106.3	144.7	189.4	117.7	100.0	174.0	100.0	152.0	114.9	September "
ጥቅምት 2011	128.7	128.9	128.5	112.4	112.3	103.8	148.7	188.8	117.7	100.0	178.3	100.0	176.8	113.8	October "
ሀዳር 2011	127.8	128.0	127.6	110.7	114.4	99.4	145.9	195.8	117.7	100.0	174.1	100.0	176.8	119.1	November "
ታህሳስ 2011	133.6	133.6	133.5	107.9	117.5	101.8	147.9	188.4	121.7	93.5	180.3	100.0	208.4	120.4	December "
ጥር 2011	134.1	134.6	133.6	108.5	115.9	102.4	146.9	188.8	124.0	93.5	181.2	112.5	208.4	119.8	January 2019
የከተት 2011	134.9	132.8	136.9	117.9	119.0	105.2	153.6	189.6	120.3	100.0	178.9	112.5	208.4	121.2	February "
መጋቢት 2011	135.3	131.0	139.4	118.9	124.6	102.6	149.5	187.9	120.3	100.0	182.5	112.5	224.0	126.6	March "
ሚያዝያ 2011	139.5	135.3	143.5	121.0	127.2	109.4	161.5	189.3	122.6	100.0	176.9	112.5	224.0	130.6	April "
ግንቦት 2011	141.8	142.0	141.7	132.4	108.4	103.6	160.8	188.2	129.9	100.0	189.4	100.0	224.0	131.1	May "
ሰኔ 2011	148.9	151.3	146.6	130.2	123.4	119.2	175.5	192.3	129.9	100.0	187.0	100.0	208.4	134.7	June "
2012															2019/2020
ሐምሌ 2011	153.5	160.2	147.3	130.0	131.9	119.0	172.0	195.0	127.6	100.0	205.5	100.0	208.4	134.8	July 2019
ነሐሴ 2011	155.7	163.1	148.7	132.9	134.6	122.1	170.7	197.6	127.6	100.0	184.4	100.0	208.4	136.4	August "
መስከረም 2012	160.4	170.2	151.3	129.5	135.8	125.9	175.1	196.7	132.1	100.0	212.9	100.0	214.4	136.1	September "
ጥቅምት 2012	157.7	165.7	150.1	130.0	132.2	125.1	163.6	196.2	132.1	100.0	236.2	125.0	214.4	142.2	October "
ሀዳር 2012	159.6	169.5	150.3	130.0	132.8	127.3	163.5	171.0	132.1	100.0	258.8	125.0	214.4	149.8	November "
ታህሳስ 2012	159.3	164.9	154.1	143.7	131.9	119.2	167.4	193.4	132.1	100.0	248.8	125.0	230.1	154.6	December "
ጥር 2012	160.8	166.2	155.7	142.4	133.7	122.0	172.7	191.4	132.1	100.0	243.0	125.0	230.1	161.3	January 2020
የከተት 2012	167.5	173.9	161.6	152.1	136.1	136.3	177.1	192.4	132.1	100.0	238.7	125.0	230.1	159.0	February "
መጋቢት 2012	173.4	178.9	168.3	189.6	139.1	134.6	175.9	194.0	132.1	100.0	233.8	125.0	242.2	155.8	March "
ሚያዝያ 2012	174.1	182.0	166.7	188.2	134.2	129.4	178.9	196.9	132.1	100.0	235.1	125.0	242.2	158.3	April "
ግንቦት 2012	176.8	185.6	168.4	195.8	142.4	128.1	173.9	197.5	143.6	100.0	248.3	125.0	242.2	158.4	May "
ሰኔ 2012	188.9	205.2	173.7	207.4	137.2	128.7	174.2	197.1	145.9	100.0	220.6	125.0	264.2	166.2	June "
2013															2019/2020
ሐምሌ 2012	200.4	220.6	181.4	196.9	142.4	148.0	178.8	195.3	200.7	100.0	229.6	93.8	264.2	168.2	July 2020
ነሐሴ 2012	200.4	225.8	176.5	203.6	146.5	125.0	177.1	194.5	200.7	100.0	233.9	125.0	264.2	171.6	August "
መስከረም 2013	202.5	221.4	184.7	203.6	152.1	151.7	177.7	198.0	132.1	100.0	244.7	125.0	284.6	169.0	September "
ጥቅምት 2013	202.4	219.0	186.8	206.7	147.1	157.4	180.8	199.1	132.1	100.0	254.3	125.0	284.6	172.5	October "
ሀዳር 2013	205.4	228.9	183.4	213.6	151.5	140.0	181.6	197.3	133.0	100.0	271.6	125.0	284.6	169.0	November "
ታህሳስ 2013	202.2	213.6	191.6	211.8	149.8	161.9	186.8	200.0	133.0	100.0	280.1	125.0	294.7	170.1	December "
ጥር 2013	200.9	210.9	191.5	193.0	159.6	214.4	185.0	202.4	136.5	100.0	285.8	125.0	214.4	174.6	January 2021

ወንጠረዥ 7፤ ጠቅላላ የሰማኞች ዋጋ መመዘኛ ኢንዱስትሪ በሥራ የተካተቱ ክፍሎች ለድሬዳዋ ከተማ አስተዳደር

ታህሳስ 2009 = 100

Table 7a: General Consumer Price Index and Its Components for Dire Dawa City Administration
December 2016 = 100

ወርና ዓመት	ጠቅላላ ኢንዱስትሪ	ምግብና አልኮሎሊክ ያልሆኑ መጠጦች	ምግብ ነክ ያልሆኑ ኢንዱስትሪ	Non-food Consumer Price Index Components											ወርና ዓመት
				መጠጦች ሲጃራና ትምባሆ	ልብስና መጫጫያ	የቤት ኪራይ የቤት መሥሪያ ሰዎች ውሃ ንግድና ሃይል	የቤት ማስገጫዎች የቤት ቁሳቁስና የቤት ሠራተኛ ደሞዝ	ህክምና	ትራንስፖርት	መገናኛ ቤታ	መዝናኛና ባህል	ትምህርት	ሬስቶራንትና ሆቴሎች	ሌሎች ዕቃዎችና አገልግሎቶች	
Month an Year	General Index	Food and Non-Alcoholic Beverages	Non-Food Index	Alcoholic Beverages and Tobacco	Clothing and Footwear	Housing, Water, Electricity, Gas and Other Fuels	Furnishings Household Equipment and Routine Maintenance of the House	Health	Transport	Communication	Recreation and Culture	Education	Restaurants and Hotels	Misellaneous Goods and services	Month an Year
ታህሳስ 2009	100.0	100.0	100.0	100.0	100.0	100.0	100.0	100.0	100.0	100.0	100.0	100.0	100.0	100.0	December 2016
ሐምሌ 2009 - ሰኔ 2010	110.8	113.5	108.9	110.4	123.7	106.3	111.2	98.9	97.6	100.0	117.6	103.1	108.1	104.3	July 2017 - June 2018
ሐምሌ 2010 - ሰኔ 2011	125.0	136.7	116.3	109.8	129.5	116.8	126.7	111.9	113.3	66.9	127.5	118.9	123.1	118.3	July 2018 - June 2019
ሐምሌ 2011 - ሰኔ 2012	150.7	171.8	135.0	137.3	157.1	135.2	146.8	132.5	134.7	60.2	128.9	148.4	132.1	132.8	July 2019 - June 2020
2011															2018/2019
ሐምሌ 2010	124.3	136.6	115.1	110.8	132.1	106.0	124.8	100.2	118.8	100.0	125.1	110.7	120.7	113.6	July 2018
ነሐሴ 2010	124.5	132.6	118.5	111.5	134.1	114.2	130.1	106.7	114.0	100.0	125.6	123.6	120.7	115.7	August "
መስከረም 2011	122.4	132.3	115.0	111.0	124.5	116.2	125.7	106.2	125.5	60.2	121.9	113.0	119.0	114.9	September "
ጥቅምት 2011	121.3	129.6	115.1	121.3	128.7	113.2	125.7	110.4	106.1	60.2	114.9	112.7	119.0	113.1	October "
ሀዳር 2011	117.9	129.2	109.4	87.1	124.8	114.1	123.6	106.7	107.8	60.2	115.9	112.8	119.0	115.6	November "
ታህሳስ 2011	120.9	128.6	115.2	111.0	131.4	116.2	126.2	106.8	107.8	60.2	116.6	112.7	122.6	116.6	December "
ጥር 2011	120.6	131.7	112.4	101.2	125.4	114.8	119.7	120.7	107.8	60.2	132.4	112.5	122.6	118.0	January 2019
የከተት 2011	124.0	133.5	116.9	114.2	125.4	118.8	126.4	115.2	119.7	60.2	132.6	112.5	122.6	118.8	February "
መጋቢት 2011	125.6	136.1	117.7	116.4	128.4	118.5	122.6	114.4	119.2	60.2	144.9	142.4	125.6	117.9	March "
ሚያዝያ 2011	128.7	141.9	118.8	115.8	131.6	123.3	126.0	116.5	107.3	60.2	126.7	122.1	125.6	121.0	April "
ግንቦት 2011	134.9	154.5	120.2	116.3	129.2	124.3	133.0	117.4	107.3	60.2	129.3	112.5	125.6	126.1	May "
ሰኔ 2011	135.3	154.3	121.1	101.0	138.4	122.0	137.0	121.1	118.8	60.2	143.8	139.0	133.9	128.1	June "
2012															2019/2020
ሐምሌ 2011	136.9	157.0	122.0	97.7	140.4	130.5	134.0	117.4	120.7	60.2	125.7	143.1	133.9	124.4	July 2019
ነሐሴ 2011	140.7	162.5	124.3	103.1	141.5	134.6	136.9	118.7	114.9	60.2	125.7	148.8	133.9	127.0	August "
መስከረም 2012	143.3	168.3	124.7	113.2	144.0	124.6	145.2	125.0	108.8	60.2	132.3	148.8	132.1	127.0	September "
ጥቅምት 2012	149.2	177.6	128.0	114.7	151.8	129.0	146.8	134.3	108.8	60.2	127.1	158.6	132.1	132.9	October "
ሀዳር 2012	146.3	168.7	129.5	122.6	152.7	127.9	143.1	135.8	123.1	60.2	129.3	151.5	132.1	135.1	November "
ታህሳስ 2012	147.4	163.3	135.5	141.9	158.9	140.6	149.8	129.4	108.8	60.2	130.2	147.4	119.2	136.6	December "
ጥር 2012	148.2	161.3	138.4	160.0	155.8	144.9	146.0	134.8	107.8	60.2	128.5	151.5	119.2	135.3	January 2020
የከተት 2012	150.6	166.6	138.7	155.7	168.3	141.2	149.1	136.7	108.8	60.2	124.3	140.4	119.2	135.2	February "
መጋቢት 2012	153.1	173.9	137.6	143.7	169.9	134.8	150.2	145.8	108.8	60.2	135.8	154.2	137.8	135.0	March "
ሚያዝያ 2012	159.7	178.5	145.6	163.1	166.0	136.6	151.9	140.8	200.4	60.2	134.8	142.1	137.8	130.7	April "
ግንቦት 2012	163.4	186.3	146.2	162.3	168.1	136.7	153.0	133.5	202.9	60.2	125.3	142.9	137.8	136.3	May "
ሰኔ 2012	170.2	197.4	149.9	169.5	167.8	140.5	155.8	137.2	202.2	60.2	127.5	151.1	149.9	138.1	June "
2013															2019/2020
ሐምሌ 2012	188.4	225.1	161.0	192.8	168.8	140.5	159.4	144.5	313.3	60.2	126.2	151.1	149.9	140.9	July 2020
ነሐሴ 2012	181.4	213.2	157.6	147.5	170.0	144.4	160.8	141.0	360.6	60.2	129.2	149.4	149.9	135.0	August "
መስከረም 2013	175.6	211.3	149.0	159.0	159.2	144.8	153.0	155.9	211.1	60.2	140.3	148.6	155.8	133.2	September "
ጥቅምት 2013	173.2	207.6	147.4	150.1	151.3	144.2	149.3	164.2	211.4	60.2	148.2	161.0	155.8	145.4	October "
ሀዳር 2013	171.9	201.8	149.7	167.0	156.6	143.3	154.2	165.7	211.1	60.2	136.7	169.6	155.8	128.4	November "
ታህሳስ 2013	172.5	202.8	150.0	156.4	156.1	142.2	158.3	176.7	211.1	60.2	142.3	167.2	168.9	133.0	December "
ጥር 2013	174.3	209.2	148.3	161.0	158.4	142.7	158.6	172.6	168.6	60.2	149.4	155.3	168.9	130.0	January 2021

ወንጠረዥ 8፤ ጠቅላላ የሰማኞች ዋጋ መመዘኛ ኢንዱስትሪ በሥራ የተካተቱ ክፍሎች ለጋምቤላ ብሔራዊ ክልላዊ መንግስት
 ታህሳስ 2009 = 100

Table 8a: General Consumer Price Index and Its Components for Gambella National Regional State
 December 2016 = 100

ወርና ዓመት	ጠቅላላ ኢንዱስትሪ	ምግብና አልኮሎሊክ ያልሆኑ መጠጦች	ምግብ ነክ ያልሆኑ ኢንዱስትሪ	Non-food Consumer Price Index Components											ወርና ዓመት
				መጠጥ ሲጃራና ትምባሆ	ሰብስቦች ማጫማያ	የቤት ኪራይ የቤት መሥሪያ ሰዎች ግብዓት ሃይል	የቤት ማስገጫዎች የቤት ቁሳቁስና የቤት ሠራተኛ ደምዝ	ሀክምና	ትራንስፖርት	መገናኛ ባህሪ	ጥቅም ላይ የዋለው	ፈሰጃ ስራ ስራ ስራ	ሌሎች ሰዎች ስራ ስራ ስራ		
Month an Year	General Index	Food and Non-Alcoholic Beverages	Non-Food Index	Alcoholic Beverages and Tobacco	Clothing and Footwear	Housing, Water, Electricity, Gas and Other Fuels	Furnishings Household Equipment and Routine Maintenance of the House	Health	Transport	Communication	Recreation and Culture	Education	Restaurants and Hotels	Misellaneous Goods and services	Month an Year
ታህሳስ 2009	100.0	100.0	100.0	100.0	100.0	100.0	100.0	100.0	100.0	100.0	100.0	100.0	100.0	100.0	December 2016
ሐምሌ 2009 - ሰኔ 2010	110.2	112.9	107.1	129.7	119.9	99.0	115.5	84.7	115.8	104.2	123.9	100.0	114.8	98.5	July 2017 - June 2018
ሐምሌ 2010 - ሰኔ 2011	123.2	129.8	115.6	140.0	132.4	99.4	134.1	96.4	135.3	104.7	126.5	106.9	145.2	106.1	July 2018 - June 2019
ሐምሌ 2011 - ሰኔ 2012	148.4	159.4	135.7	187.5	152.4	121.2	145.1	104.8	145.2	111.3	144.4	152.6	158.5	115.8	July 2019 - June 2020
2011															2018/2019
ሐምሌ 2010	124.6	129.0	119.6	135.6	127.7	112.5	121.0	95.6	134.4	119.6	126.1	100.0	142.7	101.6	July 2018
ነሐሴ 2010	122.0	127.5	115.8	125.6	134.6	104.1	128.8	92.2	134.4	113.6	132.1	100.0	142.7	103.5	August "
መስከረም 2011	120.7	127.0	113.6	126.3	131.4	98.0	133.9	99.8	134.7	112.4	132.1	100.0	142.3	104.2	September "
ጥቅምት 2011	120.1	124.4	115.2	127.4	130.7	102.4	131.2	95.2	134.7	112.4	125.9	102.2	142.3	104.9	October "
ሀዳር 2011	118.0	125.6	109.2	129.6	132.9	89.9	131.7	88.5	134.3	106.4	127.5	104.3	142.3	102.4	November "
ታህሳስ 2011	120.6	124.9	115.7	145.1	136.8	98.4	132.6	86.5	134.4	110.6	127.5	104.4	145.8	107.1	December "
ጥር 2011	119.4	125.2	112.6	141.0	131.3	93.0	134.0	87.8	135.6	111.8	127.5	110.3	145.8	104.3	January 2019
የከተት 2011	120.9	128.7	112.0	143.1	130.4	91.0	138.8	98.8	135.6	90.9	113.6	133.3	145.8	106.3	February "
መጋቢት 2011	124.5	133.3	114.5	150.4	130.7	95.2	141.1	81.8	136.9	90.9	127.5	107.5	146.3	107.8	March "
ሚያዝያ 2011	124.4	130.2	117.7	151.9	130.8	102.0	135.6	101.4	135.6	90.9	124.5	107.0	146.3	105.9	April "
ግንቦት 2011	129.5	140.2	117.2	151.4	133.0	101.4	134.1	79.9	136.7	98.2	124.3	107.0	146.3	110.9	May "
ሰኔ 2011	133.2	141.4	123.8	152.2	138.8	105.0	146.1	149.2	136.0	98.2	129.0	107.0	153.4	114.1	June "
2012															2019/2020
ሐምሌ 2011	136.7	148.7	122.9	156.8	144.2	104.3	138.8	121.8	138.0	98.2	129.0	130.5	153.4	117.3	July 2019
ነሐሴ 2011	138.4	150.1	125.0	154.3	145.6	104.0	142.6	149.7	161.7	98.2	127.5	133.3	153.4	113.7	August "
መስከረም 2012	141.6	148.8	133.4	156.1	143.5	121.3	148.3	121.2	149.6	98.2	136.5	166.0	165.5	118.0	September "
ጥቅምት 2012	139.4	149.7	127.5	154.7	141.6	112.4	145.2	120.9	130.9	98.2	142.4	157.3	165.5	113.8	October "
ሀዳር 2012	138.0	144.6	130.4	154.4	152.9	118.8	143.7	104.0	130.9	109.0	152.3	163.3	165.5	103.5	November "
ታህሳስ 2012	141.9	148.6	134.2	151.5	163.8	124.6	147.5	90.7	130.9	109.0	154.3	156.0	165.8	118.0	December "
ጥር 2012	143.4	152.5	133.0	161.8	152.7	122.5	140.0	90.2	130.9	117.7	154.3	163.3	165.8	115.8	January 2020
የከተት 2012	149.7	158.6	139.5	175.7	156.7	127.9	141.8	87.6	172.2	120.0	160.0	169.7	165.8	117.9	February "
መጋቢት 2012	153.9	166.7	139.2	233.9	149.5	121.7	138.1	90.1	150.7	127.3	142.3	156.0	149.7	116.1	March "
ሚያዝያ 2012	167.0	183.4	148.1	233.9	157.9	136.2	150.9	86.4	151.9	127.3	145.1	163.3	149.7	121.8	April "
ግንቦት 2012	160.6	175.0	144.2	252.5	158.4	124.3	153.0	86.9	147.1	120.0	144.6	136.1	149.7	124.1	May "
ሰኔ 2012	169.6	185.6	151.1	264.1	161.5	136.7	151.7	108.6	147.2	112.8	144.6	136.1	152.5	109.9	June "
2013															2019/2020
ሐምሌ 2012	174.1	186.7	159.6	275.5	155.4	148.9	154.2	122.8	174.6	112.8	142.3	136.1	152.5	108.8	July 2020
ነሐሴ 2012	173.0	195.5	147.0	265.2	156.2	125.5	147.9	103.6	175.3	120.0	144.6	136.1	152.5	112.9	August "
መስከረም 2013	174.0	194.1	150.7	269.2	161.5	131.4	148.5	107.4	177.0	112.8	151.2	166.0	153.7	114.3	September "
ጥቅምት 2013	172.7	189.1	153.8	269.6	163.7	134.6	152.3	123.5	177.4	120.0	151.3	163.3	153.7	117.7	October "
ሀዳር 2013	175.1	194.3	153.0	261.6	167.6	132.2	151.3	127.5	185.7	120.0	208.7	163.3	153.7	118.6	November "
ታህሳስ 2013	173.1	188.4	155.4	265.0	162.5	136.7	151.0	102.6	177.4	116.2	213.6	156.0	177.0	113.6	December "
ጥር 2013	179.1	193.6	162.5	278.3	163.0	144.3	152.5	124.8	194.3	120.0	216.6	163.3	177.0	118.3	January 2021

ወንጌላዊ ገዢ ጠቅላላ የሽያጭ ዋጋ መመዘኛ ኢንዱስትሪ ስራ የተካተቱ ክፍሎች ለሐረር ብሔራዊ ክልላዊ መንግስት
 ታህሳስ 2009 = 100

Table 9a: General Consumer Price Index and Its Components for Harari National Regional State
 December 2016 = 100

ወርና ዓመት	ጠቅላላ ኢንዱስትሪ	ምግብና አልኮሎሊክ ያልሆኑ ጠቀሞች	ምግብ ነክ ያልሆኑ ኢንዱስትሪ	Non-food Consumer Price Index Components											ወርና ዓመት
				መጠጥ ሲጃራና ትምባሆ	ሐ-ብስና መጫጫ ያ	የቤት ኪራይ የቤት መሥሪያ ዕቃዎች ውሃ ነዳጅና ሃይል	የቤት ማስገጫዎች የቤት ቁሳቁስና የቤት ሠራተኛ ደምዝ	ህክምና	ትራንስፖርት	መገናኛ ቤታ	መዝናኛና ባህል	ትምህርት	ሬስቶራንትና ሆቴሎች	ሌሎች ዕቃዎችና አገልግሎቶች	
Month an Year	General Index	Food and Non-Alcoholic Beverages	Non-Food Index	Alcoholic Beverages and Tobacco	Clothing and Footwear	Housing, Water, Electricity, Gas and Other Fuels	Furnishings Household Equipment and Routine Maintenance of the House	Health	Transport	Communication	Recreation and Culture	Education	Restaurants and Hotels	Misellaneous Goods and services	Month an Year
ታህሳስ 2009	100.0	100.0	100.0	100.0	100.0	100.0	100.0	100.0	100.0	100.0	100.0	100.0	100.0	100.0	December 2016
ሐምሌ 2009 - ሰኔ 2010	109.0	111.9	106.9	107.4	112.5	97.8	112.8	109.0	106.4	100.0	112.8	114.3	110.8	106.2	July 2017 - June 2018
ሐምሌ 2010 - ሰኔ 2011	121.4	128.0	116.8	105.9	125.3	110.8	130.4	113.0	126.1	100.0	113.3	147.8	125.4	124.9	July 2018 - June 2019
ሐምሌ 2011 - ሰኔ 2012	150.5	161.5	142.8	127.2	138.9	151.9	135.5	139.7	194.0	100.0	136.7	139.2	162.9	137.9	July 2019 - June 2020
2011															2018/2019
ሐምሌ 2010	115.6	124.9	109.0	89.2	124.8	105.8	128.5	111.1	111.6	100.0	113.2	127.7	117.6	115.8	July 2018
ነሐሴ 2010	114.9	123.9	108.7	91.3	115.6	107.2	126.1	111.4	111.6	100.0	108.6	128.6	118.7	116.6	August "
መስከረም 2011	117.6	121.6	114.9	100.9	123.7	108.9	131.3	110.1	111.6	100.0	109.5	150.5	128.9	118.5	September "
ጥቅምት 2011	116.9	122.9	112.7	92.4	125.1	109.1	124.7	112.1	111.6	100.0	114.0	152.2	128.9	118.2	October "
ሀዳር 2011	117.1	123.8	112.4	91.8	122.4	107.6	132.2	111.9	111.6	100.0	112.9	151.1	128.9	117.6	November "
ታህሳስ 2011	118.3	124.2	114.2	104.2	123.0	108.7	125.4	113.5	130.5	100.0	111.0	152.0	117.3	124.7	December "
ጥር 2011	121.8	126.9	118.3	113.5	128.7	112.7	127.3	111.5	141.4	100.0	114.2	152.8	117.3	121.4	January 2019
የከተት 2011	121.6	124.5	119.6	114.7	129.7	117.2	129.1	111.1	132.0	100.0	110.5	151.7	117.3	127.4	February "
መጋቢት 2011	123.6	126.3	121.8	119.1	126.7	113.4	131.1	107.6	132.0	100.0	109.1	152.3	129.0	134.0	March "
ሚያዝያ 2011	124.2	131.9	118.9	108.7	125.8	106.2	139.9	109.3	139.8	100.0	113.9	152.6	129.0	134.2	April "
ግንቦት 2011	130.5	140.8	123.2	119.3	125.8	114.0	136.3	122.1	139.8	100.0	121.2	150.6	129.0	134.3	May "
ሰኔ 2011	134.9	143.8	128.6	125.3	132.2	119.1	133.1	124.7	139.8	100.0	121.3	151.3	142.7	136.4	June "
2012															2019/2020
ሐምሌ 2011	135.7	144.6	129.4	131.4	134.0	114.7	133.2	117.5	150.0	100.0	120.6	150.6	142.7	133.8	July 2019
ነሐሴ 2011	142.2	155.2	133.1	144.2	134.8	116.6	132.5	124.5	150.0	100.0	121.0	148.6	142.7	134.7	August "
መስከረም 2012	149.1	161.8	140.3	124.2	141.7	156.6	134.6	129.6	150.0	100.0	123.8	148.6	157.7	131.9	September "
ጥቅምት 2012	147.0	162.6	136.0	109.2	134.2	158.4	133.6	132.8	150.0	100.0	130.0	140.0	157.7	128.3	October "
ሀዳር 2012	143.7	159.5	132.7	100.2	136.2	148.5	131.1	140.8	150.0	100.0	142.5	131.1	157.7	141.7	November "
ታህሳስ 2012	147.0	157.8	139.4	108.7	138.4	160.4	131.9	145.4	150.0	100.0	142.3	141.6	169.4	130.8	December "
ጥር 2012	149.5	158.5	143.2	116.4	139.9	169.5	129.4	144.4	150.0	100.0	141.6	140.4	169.4	135.4	January 2020
የከተት 2012	151.1	159.3	145.3	117.4	140.8	170.6	136.5	143.9	168.1	100.0	142.8	141.2	169.4	142.5	February "
መጋቢት 2012	154.8	159.9	151.2	152.9	141.3	158.1	136.1	146.5	150.0	100.0	147.1	137.7	173.2	141.5	March "
ሚያዝያ 2012	156.9	166.1	150.6	139.1	136.0	160.3	137.5	146.0	228.1	100.0	140.3	136.2	173.2	144.2	April "
ግንቦት 2012	159.5	170.6	151.7	133.3	147.5	152.6	137.9	147.1	308.9	100.0	143.9	136.2	173.2	136.7	May "
ሰኔ 2012	169.7	182.3	160.8	149.7	141.4	157.0	151.4	157.8	423.3	100.0	144.5	118.6	168.5	153.2	June "
2013															2019/2020
ሐምሌ 2012	177.6	190.3	168.7	177.7	144.0	162.4	152.1	152.6	423.3	100.0	141.1	118.6	168.5	152.1	July 2020
ነሐሴ 2012	179.6	190.7	171.9	176.6	143.7	180.7	151.8	157.7	423.3	100.0	116.4	117.4	168.5	156.0	August "
መስከረም 2013	178.1	188.2	171.1	171.0	141.3	173.4	151.5	160.1	423.3	100.0	132.1	151.9	174.0	165.1	September "
ጥቅምት 2013	177.3	195.0	164.9	143.9	143.4	192.9	157.4	148.2	308.9	100.0	131.1	149.2	174.0	165.1	October "
ሀዳር 2013	178.9	192.7	169.2	181.9	137.1	183.6	153.4	164.3	228.1	100.0	140.0	163.6	174.0	171.2	November "
ታህሳስ 2013	182.9	189.5	178.4	202.5	133.4	194.1	153.4	169.1	239.0	100.0	137.4	153.4	188.6	167.3	December "
ጥር 2013	178.9	191.2	170.3	181.4	145.1	185.1	153.2	169.5	228.1	100.0	137.6	161.1	174.0	169.4	January 2021

ዓገብረሰ 100፤ ጠቅላላ የሽያጭ ዋጋ መመዘኛ ለኢንዱስትሪ ነገሮች ለተካተቱ ክፍሎች ለአረቢያ ብሔራዊ ክልላዊ መንግስት
 ታህሳስ 2009 = 100

Table 10a: General Consumer Price Index and Its Components for Oromia National Regional State
 December 2016 = 100

ወርና ዓመት	ጠቅላላ ኢንዱስትሪ	ምግብና አልኮሎሊክ ያልሆኑ መጠቀሞች	ምግብ ነፃ ያልሆኑ ኢንዱስትሪ	Non-food Consumer Price Index Components											ወርና ዓመት
				መጠቀሚያ ስጦታ	ሰው ጤንና ጥገና	የቤት ደረጃ ስጦታ	የቤት ጥገና ስጦታ	የቤት ጥገና ስጦታ	የቤት ጥገና ስጦታ	የቤት ጥገና ስጦታ	የቤት ጥገና ስጦታ	የቤት ጥገና ስጦታ	የቤት ጥገና ስጦታ	የቤት ጥገና ስጦታ	
Month an Year	General Index	Food and Non-Alcoholic Beverages	Non-Food Index	Alcoholic Beverages and Tobacco	Clothing and Footwear	Housing, Water, Electricity, Gas and Other Fuels	Furnishings Household Equipment and Routine Maintenance of the House	Health	Transport	Communication	Recreation and Culture	Education	Restaurants and Hotels	Misellaneous Goods and services	Month an Year
ታህሳስ 2009	100.0	100.0	100.0	100.0	100.0	100.0	100.0	100.0	100.0	100.0	100.0	100.0	100.0	100.0	December 2016
ሐምሌ 2009 - ሰኔ 2010	115.4	116.5	114.0	100.6	141.3	116.2	119.7	69.9	112.2	100.8	114.0	117.4	106.9	105.2	July 2017 - June 2018
ሐምሌ 2010 - ሰኔ 2011	129.9	129.8	129.9	111.6	169.1	129.4	140.9	77.4	133.6	102.8	121.7	133.4	123.0	120.5	July 2018 - June 2019
ሐምሌ 2011 - ሰኔ 2012	153.7	160.8	144.7	129.5	183.1	140.6	153.6	99.8	167.2	101.9	131.3	137.6	140.1	141.3	July 2019 - June 2020
2011															2018/2019
ሐምሌ 2010	123.7	122.1	125.7	101.6	162.2	129.4	135.0	75.1	119.8	102.1	119.0	130.2	120.4	114.5	July 2018
ነሐሴ 2010	124.5	123.5	125.8	102.1	162.1	129.9	134.9	75.6	119.5	102.0	118.6	133.0	120.4	112.5	August "
መስከረም 2011	127.2	125.6	129.3	106.5	170.0	131.9	137.5	74.3	118.8	103.5	119.8	127.5	126.9	117.7	September "
ጥቅምት 2011	127.1	125.1	129.6	103.9	169.7	134.0	138.1	74.4	121.1	102.9	120.5	131.3	126.9	114.5	October "
ሀዳር 2011	123.9	123.6	124.4	105.4	155.4	123.6	137.0	74.9	125.5	102.8	120.8	133.1	126.9	115.9	November "
ታህሳስ 2011	126.5	124.7	128.9	110.5	169.2	129.1	136.7	76.8	131.4	102.6	121.4	133.4	121.8	117.4	December "
ጥር 2011	128.4	126.3	131.1	122.0	172.6	128.0	140.1	76.6	139.3	101.9	119.5	132.6	119.5	121.1	January 2019
የከተት 2011	129.5	127.6	131.8	115.4	178.4	127.7	143.8	78.0	143.4	102.3	126.7	135.8	120.6	120.8	February "
መጋቢት 2011	132.4	130.0	135.3	120.2	173.9	136.9	145.1	79.1	145.8	102.2	123.5	132.0	121.3	120.8	March "
ሚያዝያ 2011	134.2	136.8	130.8	120.5	167.6	125.9	144.9	83.0	140.4	103.6	121.3	136.6	121.3	127.5	April "
ግንቦት 2011	139.9	145.3	133.0	118.2	176.4	126.9	148.6	79.9	146.9	103.6	126.5	137.3	121.3	132.4	May "
ሰኔ 2011	141.2	147.1	133.6	112.6	171.3	130.0	149.4	81.4	150.6	103.7	123.3	137.5	129.2	130.3	June "
2012															2019/2020
ሐምሌ 2011	143.3	148.6	136.5	113.1	185.8	131.6	152.5	84.7	146.2	102.9	119.2	146.9	129.2	131.9	July 2019
ነሐሴ 2011	146.4	153.2	137.6	115.3	170.0	139.4	153.6	82.4	147.0	104.0	120.7	145.5	129.2	133.5	August "
መስከረም 2012	148.5	154.9	140.3	123.2	184.2	135.0	153.0	89.2	152.9	101.9	127.4	131.3	137.2	136.6	September "
ጥቅምት 2012	148.3	155.0	139.7	125.1	181.1	133.9	153.0	90.5	150.0	101.6	139.4	131.6	137.2	138.3	October "
ሀዳር 2012	149.5	156.0	141.0	129.1	183.0	136.2	150.5	95.1	147.2	101.3	140.3	132.3	137.2	136.8	November "
ታህሳስ 2012	148.6	153.3	142.6	121.6	185.0	140.1	152.5	94.9	152.5	102.6	133.0	136.0	139.7	139.3	December "
ጥር 2012	149.4	153.6	144.1	118.8	187.5	144.4	153.2	90.2	152.0	101.1	131.2	134.8	139.7	142.4	January 2020
የከተት 2012	153.3	160.7	143.6	125.5	169.9	145.7	151.4	95.6	161.2	101.0	135.9	137.4	139.7	145.6	February "
መጋቢት 2012	161.0	167.9	152.3	138.5	179.2	158.2	154.3	101.0	163.8	99.9	134.9	137.0	147.9	145.8	March "
ሚያዝያ 2012	161.3	171.3	148.4	141.6	178.0	144.5	154.9	114.4	166.0	102.2	133.2	141.4	147.9	145.1	April "
ግንቦት 2012	165.0	173.6	154.0	154.1	185.3	140.7	155.9	143.9	219.4	101.5	135.0	141.4	147.9	149.9	May "
ሰኔ 2012	170.2	181.5	155.7	147.4	207.5	137.2	158.3	116.2	247.6	103.1	125.9	136.0	148.6	150.0	June "
2013															2019/2020
ሐምሌ 2012	175.8	188.8	159.3	145.4	188.4	152.6	157.5	122.4	260.5	102.0	136.1	140.9	148.6	152.0	July 2020
ነሐሴ 2012	172.4	186.8	153.9	142.5	193.7	137.6	160.1	114.5	253.4	99.6	135.3	149.8	148.6	152.4	August "
መስከረም 2013	173.3	187.6	155.4	147.4	189.6	143.0	159.3	128.6	218.7	102.2	140.9	152.7	157.5	153.1	September "
ጥቅምት 2013	175.2	190.3	155.7	149.1	199.7	143.9	157.2	132.1	188.4	101.1	144.9	145.4	157.5	155.3	October "
ሀዳር 2013	175.2	190.0	156.2	147.0	202.2	142.8	158.5	140.5	188.9	100.3	146.9	146.3	157.5	161.0	November "
ታህሳስ 2013	175.1	187.5	159.2	153.3	201.0	145.6	158.8	152.9	193.8	100.5	162.8	141.9	163.4	160.8	December "
ጥር 2013	178.4	190.4	163.0	155.5	203.9	152.8	161.9	152.0	197.5	101.7	161.4	142.9	163.4	162.7	January 2021

ወር ለወር 11ሀይ ጠቅላላ የሽያጭ ዋጋ ሙሉ አገልግሎት ስራና የተካተቱ ክፍሎች ለደቡብ ብሔራዊ ክልላዊ መንግሥት ታህሳስ 2009 = 100

Table 11a: General Consumer Price Index and Its Components for SNNP National Regional State December 2016 = 100

ወርና ዓመት	ጠቅላላ አገልግሎት	ምግብና አልኮሎል ያልሆኑ ሙሉ ጠቅሎች	ምግብ ነክ ያልሆኑ አገልግሎት	Non-food Consumer Price Index Components											ወርና ዓመት
				ጠቅላላ ስጦታ ጥቅም	ሰብስቦ ሙሉ ጠቅሎች	የቤት ቤታ ሙሉ ጠቅሎች	የቤት ሙሉ ጠቅሎች	የቤት ሙሉ ጠቅሎች	የቤት ሙሉ ጠቅሎች	የቤት ሙሉ ጠቅሎች	የቤት ሙሉ ጠቅሎች	የቤት ሙሉ ጠቅሎች	የቤት ሙሉ ጠቅሎች	የቤት ሙሉ ጠቅሎች	
Month an Year	General Index	Food and Non-Alcoholic Beverages	Non-Food Index	Alcoholic Beverages and Tobacco	Clothing and Footwear	Housing, Water, Electricity, Gas and Other Fuels	Furnishings Household Equipment and Routine Maintenance of the House	Health	Transport	Communication	Recreation and Culture	Education	Restaurants and Hotels	Misellaneous Goods and services	Month an Year
ታህሳስ 2009	100.0	100.0	100.0	100.0	100.0	100.0	100.0	100.0	100.0	100.0	100.0	100.0	100.0	100.0	December 2016
ሐምሌ 2009 - ሰኔ 2010	117.8	120.5	114.3	108.4	112.2	114.0	128.8	111.3	109.7	100.2	119.1	112.8	118.7	110.9	July 2017 - June 2018
ሐምሌ 2010 - ሰኔ 2011	129.5	132.1	126.1	124.1	127.5	120.0	147.5	120.2	119.6	72.5	129.1	129.3	140.2	127.9	July 2018 - June 2019
ሐምሌ 2011 - ሰኔ 2012	160.3	164.5	154.9	141.3	127.8	166.4	158.2	129.0	148.5	70.6	146.4	136.6	165.2	147.3	July 2019 - June 2020
2011															2018/2019
ሐምሌ 2010	126.8	129.3	123.5	114.4	121.5	123.9	142.1	114.3	114.2	101.0	123.3	113.4	133.1	119.3	July 2018
ነሐሴ 2010	126.5	129.6	122.6	115.5	122.5	119.2	143.6	117.1	119.4	101.6	124.7	113.7	133.1	121.6	August "
መስከረም 2011	126.9	129.6	123.3	119.2	124.2	119.6	144.8	116.9	113.3	64.5	128.5	131.5	136.7	124.4	September "
ጥቅምት 2011	125.9	128.6	122.3	119.4	125.4	117.0	143.8	119.6	115.3	64.8	126.0	130.5	136.7	122.4	October "
ሀዳር 2011	126.0	128.8	122.5	121.1	127.3	115.1	145.2	119.3	117.4	64.9	128.5	133.4	136.7	126.3	November "
ታህሳስ 2011	126.2	128.2	123.6	122.6	127.1	116.7	145.8	120.5	115.9	65.4	129.8	129.9	139.5	125.9	December "
ጥር 2011	127.0	128.0	125.8	125.2	129.9	118.6	148.7	118.7	117.9	66.3	128.1	130.7	139.5	127.5	January 2019
የከተማ 2011	127.8	128.5	127.0	127.6	130.2	117.9	150.2	123.2	118.7	68.0	130.8	132.0	139.5	129.5	February "
መጋቢት 2011	130.1	130.5	129.5	132.6	129.7	121.5	149.2	126.5	122.5	68.1	131.2	129.0	144.9	130.9	March "
ሚያዝያ 2011	133.5	135.8	130.5	132.5	130.6	122.1	152.1	123.2	127.7	67.9	132.7	132.4	144.9	132.4	April "
ግንቦት 2011	138.3	143.4	131.7	129.9	130.8	126.0	151.7	118.6	127.1	66.9	133.6	135.8	144.9	135.4	May "
ሰኔ 2011	139.2	145.4	131.2	128.7	130.3	122.3	152.2	124.8	125.9	70.8	131.4	139.2	152.7	138.9	June "
2012															2019/2020
ሐምሌ 2011	143.5	150.2	134.8	129.5	131.7	129.5	153.3	124.6	130.4	72.0	135.5	140.8	152.7	137.2	July 2019
ነሐሴ 2011	145.3	152.2	136.4	128.5	131.6	129.7	154.8	121.1	129.2	75.4	137.1	139.3	152.7	138.7	August "
መስከረም 2012	150.1	157.1	141.1	134.0	121.9	136.0	156.9	129.6	143.4	72.1	138.1	139.7	162.2	145.0	September "
ጥቅምት 2012	152.4	160.2	142.3	133.1	124.4	141.4	156.4	126.2	143.2	71.3	147.5	136.0	162.2	143.4	October "
ሀዳር 2012	153.5	160.0	145.2	124.3	123.1	150.3	157.7	122.6	141.3	70.1	151.3	134.5	162.2	143.9	November "
ታህሳስ 2012	156.1	156.5	155.6	134.0	124.9	171.2	158.6	135.9	137.4	70.4	149.1	140.6	165.6	145.4	December "
ጥር 2012	157.6	157.4	157.8	124.9	127.4	177.8	162.2	127.0	139.9	67.6	148.1	141.3	165.6	147.6	January 2020
የከተማ 2012	162.7	162.5	162.8	117.9	126.7	191.0	157.9	128.8	139.7	69.1	148.0	136.3	165.6	149.7	February "
መጋቢት 2012	164.9	168.4	160.3	161.2	128.5	174.5	159.2	132.4	145.1	70.3	148.4	127.5	172.0	152.1	March "
ሚያዝያ 2012	175.2	179.3	170.0	168.6	132.2	193.4	161.1	133.4	150.2	69.5	149.3	136.7	172.0	155.4	April "
ግንቦት 2012	180.5	183.1	177.2	167.8	130.1	203.8	158.6	135.4	187.9	71.3	154.8	135.5	172.0	156.5	May "
ሰኔ 2012	182.0	186.9	175.6	172.3	131.1	197.9	161.8	130.6	193.7	68.2	149.8	131.2	177.2	152.4	June "
2013															2019/2020
ሐምሌ 2012	184.3	191.2	175.3	173.8	133.2	195.1	163.4	135.1	197.7	70.0	152.0	128.3	177.2	154.9	July 2020
ነሐሴ 2012	190.1	195.9	182.6	173.3	135.7	209.0	163.4	137.4	212.4	70.9	149.9	116.7	177.2	155.6	August "
መስከረም 2013	195.4	201.3	187.7	169.1	135.8	218.2	165.3	135.4	205.6	70.3	149.5	140.7	183.9	159.3	September "
ጥቅምት 2013	193.6	204.2	179.9	170.0	138.0	206.6	165.5	141.0	166.8	69.0	152.3	146.7	183.9	159.9	October "
ሀዳር 2013	194.4	203.2	183.1	171.7	138.7	213.2	163.2	136.8	175.4	72.0	167.5	143.0	183.9	160.4	November "
ታህሳስ 2013	193.1	199.4	185.0	177.1	140.1	212.6	165.7	144.9	173.2	70.6	177.5	143.2	188.4	165.7	December "
ጥር 2013	196.9	203.4	188.5	174.6	145.3	215.8	168.6	148.1	188.9	73.1	176.0	148.3	188.4	170.6	January 2021

ወርና ዓመት ጠቅላላ የሰውነት ዋጋ መመዘኛ ለጋራ የተካተቱ ክፍሎች ለሰማሊ ብሔራዊ ክልላዊ መንግስት ታህሳስ 2009 = 100

Table 12a: General Consumer Price Index and Its Components for Somali National Regional State December 2016 = 100

ወርና ዓመት	ጠቅላላ ኢንዱክስ	ምግብ ነፃ የሆኑ ደህንነታዊ ክፍሎች Non-food Consumer Price Index Components													ወርና ዓመት
		ምግብና አልኮሎል የሆኑ መጠጦች	ምግብ ነፃ የሆኑ ኢንዱክስ	መጠጦች ሲጃራና ትምባሆ	ሰጠጠና ማጫማ	የቤት ኪራይ የቤት መሥሪያ ስቃያት ውሃ ንግድና ሃይል	የቤት ማስገጫዎች የቤት ቁሳቁስና የቤት ሠራተኛ ደምዝ	ህክምና	ትራንስፖርት	መገናኛ ቤታ	መዝናኛና ባህል	ትምህርት	ሬስቶራንትና ሆቴሎች	ሌሎች ስቃያትና አገልግሎቶች	
Month an Year	General Index	Food and Non-Alcoholic Beverages	Non-Food Index	Alcoholic Beverages and Tobacco	Clothing and Footwear	Housing, Water, Electricity, Gas and Other Fuels	Furnishings Household Equipment and Routine Maintenance of the House	Health	Transport	Communication	Recreation and Culture	Education	Restaurants and Hotels	Misellaneous Goods and services	Month an Year
ታህሳስ 2009	100.0	100.0	100.0	100.0	100.0	100.0	100.0	100.0	100.0	100.0	100.0	100.0	100.0	100.0	December 2016
ሐምሌ 2009 - ሰኔ 2010	110.4	113.7	106.7	110.6	114.5	98.1	113.3	123.7	113.5	100.5	143.7	122.9	113.6	108.8	July 2017 - June 2018
ሐምሌ 2010 - ሰኔ 2011	124.1	132.5	114.7	107.0	144.7	102.0	129.4	147.6	130.1	102.8	156.7	134.0	131.8	131.9	July 2018 - June 2019
ሐምሌ 2011 - ሰኔ 2012	149.5	159.4	138.5	133.9	171.4	128.3	134.2	136.0	187.3	103.0	186.1	188.8	153.9	153.1	July 2019 - June 2020
2011															2018/2019
ሐምሌ 2010	119.1	126.1	111.3	102.9	125.7	102.5	140.1	140.7	113.3	102.0	159.0	125.9	126.6	127.2	July 2018
ነሐሴ 2010	120.8	130.0	110.6	108.5	124.2	101.2	122.0	141.2	113.0	102.0	162.6	125.9	126.6	125.0	August "
መስከረም 2011	122.0	130.8	112.2	104.8	134.6	101.1	130.5	155.0	111.7	102.8	142.0	136.3	133.8	133.1	September "
ጥቅምት 2011	119.1	128.5	108.6	89.2	154.3	97.4	125.0	162.0	114.4	102.6	155.4	131.8	133.8	124.7	October "
ሀዳር 2011	119.5	128.3	109.7	98.6	143.9	98.2	122.9	151.4	114.4	101.9	155.1	134.2	133.8	123.5	November "
ታህሳስ 2011	121.1	128.9	112.4	98.9	150.0	100.4	128.4	151.9	139.0	101.2	160.4	133.1	130.7	124.3	December "
ጥር 2011	125.8	131.3	119.8	120.9	151.1	104.3	126.6	142.8	139.0	102.9	162.4	134.2	130.7	121.9	January 2019
የከተት 2011	120.9	131.3	109.4	93.0	147.1	98.4	126.1	144.4	139.1	103.1	154.9	134.2	130.7	124.0	February "
መጋቢት 2011	123.2	133.2	112.1	97.3	149.1	99.7	128.2	144.1	147.9	103.4	154.8	134.2	132.2	132.6	March "
ሚያዝያ 2011	126.7	135.3	117.2	113.4	149.4	100.1	130.8	153.1	140.2	103.6	157.1	135.8	132.2	139.6	April "
ግንቦት 2011	132.4	141.4	122.5	126.8	146.2	103.7	134.5	145.6	137.7	104.0	157.2	130.5	130.7	151.5	May "
ሰኔ 2011	138.5	145.2	131.1	129.8	161.0	117.1	137.3	138.5	152.0	103.7	159.8	152.4	140.1	155.5	June "
2012															2019/2020
ሐምሌ 2011	142.0	149.9	133.2	127.9	160.9	123.6	136.7	136.0	175.2	103.5	161.4	146.3	130.7	156.4	July 2019
ነሐሴ 2011	143.4	153.5	132.2	135.8	158.2	114.5	141.1	132.3	181.2	103.4	163.8	167.4	147.9	147.9	August "
መስከረም 2012	150.5	161.8	137.9	136.1	165.0	128.6	134.6	131.3	175.4	102.7	162.6	162.2	153.8	152.9	September "
ጥቅምት 2012	150.4	161.1	138.6	139.1	164.7	128.8	134.5	134.7	173.7	103.0	177.6	181.3	153.8	144.6	October "
ሀዳር 2012	151.4	164.0	137.5	128.8	167.6	131.4	133.4	153.3	171.3	103.5	193.3	199.1	153.8	150.1	November "
ታህሳስ 2012	149.3	161.9	135.3	126.0	173.2	123.5	131.6	150.8	190.9	102.6	191.8	194.4	159.6	159.2	December "
ጥር 2012	147.4	160.5	133.0	108.6	180.0	128.5	131.2	135.1	188.6	103.1	199.2	197.0	159.6	161.1	January 2020
የከተት 2012	147.5	156.3	137.7	116.7	171.1	139.3	133.0	133.8	190.1	102.7	201.2	203.4	159.6	149.8	February "
መጋቢት 2012	151.0	159.4	141.7	132.3	179.2	136.3	132.7	130.4	174.0	102.7	201.0	203.4	156.4	153.1	March "
ሚያዝያ 2012	154.8	163.1	145.6	141.6	177.6	136.8	133.0	130.7	229.9	103.0	195.3	200.7	156.4	153.9	April "
ግንቦት 2012	152.1	161.5	141.6	144.6	180.5	123.4	133.9	131.7	217.6	102.7	189.2	207.6	156.4	151.8	May "
ሰኔ 2012	154.4	160.0	148.2	168.9	179.0	124.9	134.9	131.7	180.1	102.8	196.5	202.7	159.0	156.9	June "
2013															2019/2020
ሐምሌ 2012	158.7	162.9	154.1	132.7	223.2	143.7	132.7	123.0	317.5	103.2	197.6	169.4	159.0	161.7	July 2020
ነሐሴ 2012	157.0	169.2	143.5	135.2	185.0	126.3	135.1	144.4	301.3	103.0	197.6	196.7	159.0	164.9	August "
መስከረም 2013	155.6	166.8	143.1	130.7	182.6	130.7	139.3	144.5	226.4	103.2	197.7	196.7	182.0	177.3	September "
ጥቅምት 2013	157.2	165.9	147.5	143.1	182.4	131.7	143.4	145.8	244.5	103.4	199.1	203.4	182.0	173.2	October "
ሀዳር 2013	162.9	166.5	158.9	163.1	186.1	145.9	142.6	145.8	241.3	103.2	214.0	213.7	182.0	178.9	November "
ታህሳስ 2013	163.8	170.1	156.8	177.7	184.2	129.6	144.3	133.4	244.8	102.4	226.2	215.7	179.8	178.3	December "
ጥር 2013	163.7	177.3	148.6	149.1	179.6	127.4	158.9	147.9	238.8	103.2	220.8	204.4	179.8	178.4	January 2021

ወንጌላ ገቢ 13ሀ፤ ጠቅላላ የሽያጭ ዋጋ መመዘኛ ለጎደክስና በሥሩ የተካተቱ ክፍሎች ለትግራይ ብሔራዊ ክልላዊ መንግስት
 ታህሳስ 2009 = 100

Table 13a: General Consumer Price Index and Its Components for Tigray National Regional State
 December 2016 = 100

ወርና ዓመት	ጠቅላላ ለጎደክስ	ምግብና አልኮሎል ያልሆኑ መጠቀሻ	ምግብ ነክ ያልሆኑ ለጎደክስ	ምግብ ነክ ያልሆኑ ደረጃዎች Non-food Consumer Price Index Components											ወርና ዓመት
				መጠቀሻ ለጎደክስ ትምህርት	ልብስና መጫጫያ	የቤት ኪራይ የቤት መሥሪያ ስቃዎች ውሃ ንግድና ሃይል	የቤት ማስገጫዎች የቤት ቁሳቁስና የቤት ሠራተኛ ደሞዝ	ህክምና	ትራንስፖርት	መገናኛ ቤታላቤ	መዝናኛና ስህል	ትምህርት	ሬስቶራንትና ሆቴሎች	ሌሎች ስቃዎችና አገልግሎቶች	
Month an Year	General Index	Food and Non-Alcoholic Beverages	Non-Food Index	Alcoholic Beverages and Tobacco	Clothing and Footwear	Housing, Water, Electricity, Gas and Other Fuels	Furnishings Household Equipment and Routine Maintenance of the House	Health	Transport	Communication	Recreation and Culture	Education	Restaurants and Hotels	Misellaneous Goods and services	Month an Year
ታህሳስ 2009	100.0	100.0	100.0	100.0	100.0	100.0	100.0	100.0	100.0	100.0	100.0	100.0	100.0	100.0	December 2016
ሐምሌ 2009 - ሰኔ 2010	114.0	118.0	110.6	107.1	105.6	111.0	108.5	108.0	109.5	100.0	83.8	89.2	120.4	109.2	July 2017 - June 2018
ሐምሌ 2010 - ሰኔ 2011	136.5	145.4	128.9	124.1	123.4	132.0	126.8	133.1	112.2	100.0	93.2	109.5	144.1	123.5	July 2018 - June 2019
ሐምሌ 2011 - ሰኔ 2012	169.6	183.4	158.0	162.3	148.8	169.2	147.8	154.6	119.9	100.0	114.8	120.9	177.3	149.2	July 2019 - June 2020
2011															2018/2019
ሐምሌ 2010	126.1	133.9	119.6	128.9	112.6	116.9	122.8	150.1	112.9	100.0	85.6	54.0	130.9	119.4	July 2018
ነሐሴ 2010	126.3	131.6	121.8	126.6	117.7	125.5	120.5	121.2	113.5	100.0	89.3	54.0	130.9	113.4	August "
መስከረም 2011	130.9	141.6	121.9	110.4	114.8	124.4	118.0	127.2	112.5	100.0	87.8	112.4	134.7	124.8	September "
ጥቅምት 2011	132.7	144.4	122.8	112.1	120.3	124.9	124.0	123.8	109.7	100.0	90.2	119.1	134.7	119.4	October "
ሀዳር 2011	133.8	145.4	124.1	111.5	121.6	127.5	125.1	128.8	109.8	100.0	92.6	116.5	134.7	119.9	November "
ታህሳስ 2011	136.5	144.4	129.9	136.0	120.1	130.0	129.8	137.8	112.7	100.0	94.9	115.9	150.5	121.4	December "
ጥር 2011	136.0	143.9	129.3	110.7	126.5	130.6	128.0	132.0	110.8	100.0	97.3	124.1	151.0	120.7	January 2019
የከተት 2011	135.4	143.6	128.4	121.8	127.5	124.1	128.0	140.7	117.5	100.0	94.6	121.9	151.0	123.4	February "
መጋቢት 2011	140.8	149.0	133.9	134.4	129.3	139.2	128.4	139.7	117.5	100.0	96.6	150.2	146.4	126.9	March "
ሚያዝያ 2011	144.8	151.2	139.3	125.0	128.0	158.5	129.7	143.4	105.6	100.0	95.4	117.5	146.4	124.5	April "
ግንቦት 2011	144.2	157.0	133.4	130.2	131.1	135.2	130.5	142.8	119.5	100.0	96.7	117.8	146.4	133.5	May "
ሰኔ 2011	150.1	159.4	142.3	141.8	131.7	147.4	136.6	109.6	105.1	100.0	97.6	110.8	171.9	135.1	June "
2012															2019/2020
ሐምሌ 2011	153.2	166.4	142.0	143.8	133.0	145.8	138.3	116.0	105.7	100.0	99.1	82.0	171.9	132.3	July 2019
ነሐሴ 2011	158.3	172.8	145.9	146.3	133.4	157.3	135.4	120.8	103.5	100.0	102.7	82.0	171.9	132.3	August "
መስከረም 2012	161.7	175.5	149.9	140.5	147.8	155.5	139.3	159.4	110.5	100.0	108.8	146.8	173.7	145.8	September "
ጥቅምት 2012	164.8	177.5	154.0	141.4	149.3	163.7	140.8	163.6	122.8	100.0	113.4	126.9	173.7	148.0	October "
ሀዳር 2012	164.1	174.9	155.0	143.4	150.9	165.3	148.4	152.3	122.7	100.0	122.0	131.2	173.7	142.5	November "
ታህሳስ 2012	163.4	172.9	155.4	152.1	151.2	167.7	146.7	149.8	115.4	100.0	116.0	140.8	171.2	145.8	December "

ወንጠረዥ 1A፤ ጠቅላላ የምግብ የሽያጭ ዋጋ መመዘኛ ሊንዲክስና በሥሩ የተካተቱ ክፍሎች በአገር አቀፍ ደረጃ

ታህሳስ 2009 = 100

Table 1b: General Food Consumer Price Index and Its Components at Country Level
December 2016 = 100

ወርና ዓመት	ዕቅድ ስርዓት											ወርና ዓመት
	ምግብና አልኮሎሊክ ያልሆኑ መጠቀሻ	ዳቦና ለሀላ	ሥጋ	አሰና የባህር ምግቦች	ወተት አይብና ዕንቁላል	ዘይትና ቅባቶች	ፍሬፍሬ	አትክልትና ጥራጥሬ	ስኳር ማርና ጅካሊት	ሌሎች ምግቦች	አልኮሎሊክ ያልሆኑ መጠቀሻ	
Month an Year	Food and Non-Alcoholic Beverages	Bread and Cereals	Meat (ND)	Fish and Seafood	Milk, cheese and eggs (ND)	Oils and fats (ND)	Fruit (ND)	Vegetables	Sugar, jam, honey, chocolate.	Food products n.e.c. (ND)	Non-Alcoholic Beverages and coffee	Month an Year
ታህሳስ 2009	100.0	100.0	100.0	100.0	100.0	100.0	100.0	100.0	100.0	100.0	100.0	December 2016
ሐምሌ 2009 - ሰኔ 2010	118.0	126.7	121.0	104.3	114.7	96.9	129.1	115.3	96.4	129.5	106.2	July 2017 - June 2018
ሐምሌ 2009 - ሰኔ 2010	133.5	144.7	143.5	113.7	134.6	99.0	145.6	135.1	106.5	141.5	111.0	July 2018 - June 2019
ሐምሌ 2011 - ሰኔ 2012	164.7	185.6	178.4	123.4	152.8	111.4	181.6	172.8	110.0	169.9	125.2	July 2019 - June 2020
2011												2018/2019
ሐምሌ 2010	127.1	139.6	136.5	110.9	124.5	94.1	131.8	123.4	95.9	134.6	116.3	July 2018
ነሐሴ 2010	128.2	139.8	135.0	110.1	128.1	96.9	133.3	123.3	105.6	139.3	115.6	August "
መስከረም 2011	129.4	139.8	139.4	115.4	130.8	96.6	134.1	127.6	104.8	136.7	115.9	September "
ጥቅምት 2011	128.6	139.7	136.8	115.4	131.4	98.2	140.7	123.7	106.1	138.1	115.4	October "
ሀዳር 2011	127.8	139.9	136.9	116.9	128.2	96.2	140.1	123.1	104.0	137.9	111.9	November "
ታህሳስ 2011	128.6	140.4	137.6	110.4	129.9	98.0	142.2	126.1	105.7	137.5	109.1	December "
ጥር 2011	130.1	141.1	141.8	118.2	133.2	99.0	143.6	128.9	105.7	140.4	105.8	January 2019
የካቲት 2011	131.5	141.4	141.5	111.7	135.7	98.1	148.2	131.6	106.9	145.2	106.5	February "
መጋቢት 2011	134.3	143.8	142.6	116.0	137.0	97.0	152.0	140.4	107.6	143.9	107.2	March "
ሜያዝያ 2011	139.2	151.0	142.9	106.3	138.5	102.5	154.3	147.3	109.9	146.3	107.9	April "
ግንቦት 2011	147.6	156.8	164.6	119.5	147.5	105.1	162.4	163.2	112.7	148.7	109.4	May "
ሰኔ 2011	150.2	162.7	166.3	114.2	150.7	106.1	163.8	163.0	113.5	149.2	111.5	June "
2012												2019/2020
ሐምሌ 2011	152.6	171.1	166.7	119.2	145.5	113.5	165.9	158.3	116.0	151.1	113.7	July 2019
ነሐሴ 2011	157.6	177.0	169.8	113.4	149.1	103.4	169.1	169.7	116.8	156.0	116.9	August "
መስከረም 2012	159.5	178.6	174.6	111.1	154.8	106.6	171.2	173.7	113.2	152.1	117.6	September "
ጥቅምት 2012	158.4	181.2	173.3	114.1	150.9	106.2	180.0	167.3	112.3	149.2	119.3	October "
ሀዳር 2012	159.1	185.6	174.0	119.1	149.6	105.1	187.2	162.8	112.6	152.8	119.1	November "
ታህሳስ 2012	157.9	180.7	176.1	117.0	146.9	108.1	182.0	160.0	113.1	159.3	119.6	December "
ጥር 2012	158.7	179.6	178.7	122.7	150.2	106.1	186.1	161.0	104.6	166.9	121.4	January 2020
የካቲት 2012	164.5	180.8	177.1	121.1	156.6	110.5	189.6	175.6	105.5	176.5	126.0	February "
መጋቢት 2012	170.4	187.8	181.8	124.9	153.4	122.0	187.5	177.4	104.5	188.7	135.1	March "
ሜያዝያ 2012	175.2	198.1	188.5	142.6	156.2	114.8	192.1	182.7	105.2	189.9	134.7	April "
ግንቦት 2012	177.6	201.9	189.7	135.3	162.1	116.0	185.2	181.7	108.7	195.3	137.8	May "
ሰኔ 2012	184.8	204.5	190.7	139.8	158.3	124.8	183.6	203.0	107.5	201.2	141.1	June "
2013												2020/2021
ሐምሌ 2012	190.7	209.9	192.3	153.5	157.6	124.0	182.5	215.7	106.8	209.3	144.8	July 2020
ነሐሴ 2012	192.2	217.3	190.6	146.8	163.4	122.4	170.2	208.7	106.9	208.8	153.4	August "
መስከረም 2013	193.4	223.4	195.2	151.9	168.8	124.6	174.9	200.1	104.8	209.8	156.1	September "
ጥቅምት 2013	195.1	225.2	196.5	152.8	171.0	129.9	180.4	199.5	110.3	211.0	160.1	October "
ሀዳር 2013	194.3	224.8	195.4	151.7	173.5	134.6	184.7	192.3	115.1	212.7	161.8	November "
ታህሳስ 2013	191.5	221.1	196.9	141.9	172.8	142.7	182.7	186.8	117.0	206.3	157.3	December "
ጥር 2013	195.5	222.7	198.0	151.6	178.8	142.9	190.0	198.7	116.6	209.1	156.4	January 2021
#	23.1	24.0	10.8	23.5	19.0	34.6	2.1	23.4	11.5	25.3	28.8	

ወንጠረዥ 3ለ፤ ጠቅላላ የምግብ የሽግግር ዋጋ መመዘኛ ሊንዲክስና በሥሩ የተካተቱ ክፍሎች ለአዲስ አበባ ከተማ አስተዳደር
 ታህሳስ 2009 = 100

Table 3b: General Food Consumer Price Index and Its Components for Addis Ababa City Administration
 December 2016 = 100

ወርና ዓመት	ዕቅድ ስርዓት											ወርና ዓመት
	ምግብና አልኮሎሊክ ያልሆኑ መጠቀሻ	ዳቦና ለሀላ	ሥጋ	አሰና የባህር ምግቦች	ወተት አይብና ዕንቁላል	ዘይትና ቅባቶች	ፍራፍሬ	አትክልትና ጥራጥራ	ስኳርና ጭንቅታ	ሌሎች ምግቦች	አልኮሎሊክ ያልሆኑ መጠቀሻ	
Month an Year	Food and Non-Alcoholic Beverages	Bread and Cereals	Meat (ND)	Fish and Seafood	Milk, cheese and eggs (ND)	Oils and fats (ND)	Fruit (ND)	Vegetables	Sugar, jam, honey, chocolate.	Food products n.e.c. (ND)	Non-Alcoholic Beverages and coffee	Month an Year
ታህሳስ 2009	100.0	100.0	100.0	100.0	100.0	100.0	100.0	100.0	100.0	100.0	100.0	December 2016
ሐምሌ 2009 - ሰኔ 2010	112.6	112.8	118.1	103.3	110.7	110.9	136.6	107.5	100.0	126.6	104.3	July 2017 - June 2018
ሐምሌ 2009 - ሰኔ 2010	129.4	129.0	136.3	113.3	129.5	117.9	149.1	129.1	103.5	156.3	110.3	July 2018 - June 2019
ሐምሌ 2011 - ሰኔ 2012	163.0	164.6	173.5	132.8	147.4	139.4	181.9	170.7	114.1	193.4	125.3	July 2019 - June 2020
2011												2018/2019
ሐምሌ 2010	123.8	122.6	130.0	112.3	121.8	115.2	134.1	121.7	100.0	158.9	109.4	July 2018
ነሐሴ 2010	123.7	124.9	127.1	109.1	124.6	116.0	135.5	118.9	100.1	160.6	107.9	August "
መስከረም 2011	128.1	126.7	133.0	106.1	129.5	116.9	136.5	128.4	100.0	164.9	110.7	September "
ጥቅምት 2011	122.7	124.4	126.9	106.2	131.3	114.4	141.7	115.5	100.0	155.8	108.7	October "
ህዳር 2011	122.7	126.0	128.7	116.0	127.4	116.8	136.9	113.2	100.0	147.6	110.4	November "
ታህሳስ 2011	125.8	126.2	128.1	108.8	128.2	117.1	136.8	124.0	100.0	160.8	109.8	December "
ጥር 2011	126.4	127.2	139.9	117.7	130.8	117.5	145.1	115.8	100.0	156.0	109.9	January 2019
የካቲት 2011	126.9	129.3	134.5	116.1	129.5	117.3	149.1	119.1	100.0	154.2	111.9	February "
መጋቢት 2011	129.1	132.5	131.8	124.4	125.7	117.2	161.1	128.1	100.0	154.4	106.8	March "
ሚያዝያ 2011	132.8	131.2	137.5	113.5	127.9	119.8	178.8	138.0	114.1	153.2	110.2	April "
ግንቦት 2011	144.5	135.4	159.7	109.7	135.7	123.6	168.6	163.0	114.1	154.7	113.6	May "
ሰኔ 2011	146.8	142.2	158.1	119.3	141.2	122.6	165.3	164.0	114.1	154.4	114.6	June "
2012												2019/2020
ሐምሌ 2011	149.1	150.4	161.6	154.5	137.6	127.7	173.5	155.3	114.1	159.5	115.9	July 2019
ነሐሴ 2011	157.4	159.7	160.4	112.6	139.8	132.8	176.9	177.2	114.1	165.1	114.7	August "
መስከረም 2012	160.1	156.7	171.4	131.8	150.2	133.2	179.0	182.2	114.1	163.5	117.5	September "
ጥቅምት 2012	157.9	159.0	168.0	125.7	154.1	133.3	181.3	169.9	114.1	164.2	118.5	October "
ህዳር 2012	156.3	158.9	171.3	136.0	145.7	134.6	183.6	159.3	114.1	172.4	118.3	November "
ታህሳስ 2012	157.1	159.6	176.1	125.6	141.3	133.5	188.5	158.0	114.1	176.3	119.2	December "
ጥር 2012	158.5	159.6	184.5	112.1	148.5	134.8	195.5	153.6	114.1	181.0	120.1	January 2020
የካቲት 2012	160.6	160.7	173.4	129.5	146.2	146.4	190.3	166.6	114.1	179.0	123.9	February "
መጋቢት 2012	163.5	166.0	167.7	151.9	145.0	145.4	186.2	170.5	114.1	189.9	138.9	March "
ሚያዝያ 2012	172.0	178.3	177.1	122.1	148.6	147.3	181.1	176.1	114.1	214.2	140.3	April "
ግንቦት 2012	176.0	182.3	188.8	144.4	154.7	148.1	173.5	173.6	114.1	234.0	136.8	May "
ሰኔ 2012	187.7	183.7	182.2	147.9	157.4	155.9	172.8	205.3	114.1	321.9	139.4	June "
2013												2020/2021
ሐምሌ 2012	196.8	187.3	188.8	200.7	156.2	157.5	166.8	231.4	108.7	339.7	140.8	July 2020
ነሐሴ 2012	197.5	191.7	188.7	187.0	157.5	158.1	153.5	222.9	108.7	357.7	145.6	August "
መስከረም 2013	198.8	203.3	198.0	186.4	160.8	158.9	159.9	200.9	110.6	362.1	146.5	September "
ጥቅምት 2013	199.2	208.0	191.6	201.7	164.7	158.1	168.2	195.3	141.3	364.7	151.4	October "
ህዳር 2013	194.5	207.9	187.9	183.0	161.7	157.9	178.9	181.2	141.3	344.4	154.5	November "
ታህሳስ 2013	189.5	205.4	187.4	162.5	155.9	155.8	186.6	176.0	142.1	291.5	157.0	December "
ጥር 2013	193.7	203.3	192.7	184.5	167.0	168.3	194.5	180.5	141.3	314.9	159.7	January 2021

ሠንጠረዥ 4ላ፤ ጠቅላላ የምግብ የሽያጭ ዋጋ መመዘኛ ሊንዲክስና በሥሩ የተካተቱ ክፍሎች ለአፋር ብሔራዊ ክልላዊ መንግስት
 ታህሳስ 2009 = 100

Table 4b: General Food Consumer Price Index and Its Components for Afar National Regional State
 December 2016 = 100

ወርና ዓመት	ዕቃዎች ስርዓት											ወርና ዓመት
	ምግብና አልኮሎሊክ ያልሆኑ መጠቀሻ	ዳቦና ለሀል	ሥጋ	አሰና የባህር ምግቦች	ወተት አይብና ዕንቁላል	ዘይትና ቅባቶች	ፍራፍሬ	አትክልትና ጥራጥራ	ስኳር ማርና ጅኮሊት	ሌሎች ምግቦች	አልኮሎሊክ ያልሆኑ መጠቀሻ	
Month an Year	Food and Non-Alcoholic Beverages	Bread and Cereals	Meat (ND)	Fish and Seafood	Milk, cheese and eggs (ND)	Oils and fats (ND)	Fruit (ND)	Vegetables	Sugar, jam, honey, chocolate.	Food products n.e.c. (ND)	Non-Alcoholic Beverages and coffee	Month an Year
ታህሳስ 2009	100.0	100.0	100.0	100.0	100.0	100.0	100.0	100.0	100.0	100.0	100.0	December 2016
ሐምሌ 2009 - ሰኔ 2010	114.7	118.2	122.3	130.1	103.7	108.6	107.9	120.2	110.2	139.9	111.7	July 2017 - June 2018
ሐምሌ 2009 - ሰኔ 2010	127.7	139.8	158.9	161.6	112.7	100.1	119.8	147.4	89.5	104.6	116.7	July 2018 - June 2019
ሐምሌ 2011 - ሰኔ 2012	161.2	182.0	202.4	180.4	124.9	166.5	133.9	198.1	122.7	110.6	133.8	July 2019 - June 2020
2011												2018/2019
ሐምሌ 2010	122.1	133.4	129.9	154.7	104.5	102.6	124.3	138.4	81.1	140.4	120.6	July 2018
ነሐሴ 2010	123.3	136.0	129.5	155.1	105.5	102.4	123.0	144.3	81.1	125.7	120.4	August "
መስከረም 2011	127.1	134.4	160.8	160.3	107.1	112.1	122.0	161.4	81.5	121.6	116.7	September "
ጥቅምት 2011	125.8	133.6	158.0	157.8	115.6	105.0	121.7	140.2	81.1	123.6	117.1	October "
ሀዳር 2011	122.8	137.2	149.7	166.1	109.6	102.8	118.4	131.3	81.1	89.4	116.7	November "
ታህሳስ 2011	124.5	135.9	161.2	159.0	109.9	101.3	117.3	144.1	81.1	91.6	115.7	December "
ጥር 2011	126.8	137.4	159.1	164.2	121.5	101.3	118.6	135.3	93.5	89.8	113.0	January 2019
የካቲት 2011	124.7	138.3	165.3	165.3	110.5	102.0	117.3	132.1	90.3	93.7	113.2	February "
መጋቢት 2011	126.7	140.1	165.2	160.7	110.1	101.7	113.4	145.9	92.2	94.0	111.3	March "
ሚያዝያ 2011	128.1	144.9	168.6	162.2	109.9	89.7	115.0	143.6	92.2	95.0	115.2	April "
ግንቦት 2011	138.1	150.2	179.3	164.9	120.0	90.1	121.5	179.8	105.1	97.4	116.7	May "
ሰኔ 2011	142.3	155.7	180.6	168.8	128.5	90.9	125.1	172.9	113.9	93.3	124.1	June "
2012												2019/2020
ሐምሌ 2011	146.4	162.9	192.2	170.6	112.2	153.8	127.3	178.2	125.4	99.2	121.1	July 2019
ነሐሴ 2011	151.9	162.6	191.2	171.7	137.3	142.9	127.4	184.6	113.8	100.3	125.2	August "
መስከረም 2012	156.9	176.9	192.6	171.4	114.4	195.5	130.8	202.7	112.9	104.8	124.6	September "
ጥቅምት 2012	161.0	180.5	196.9	196.0	123.6	180.5	123.9	211.2	123.7	102.9	123.3	October "
ሀዳር 2012	160.5	179.3	198.0	179.6	132.7	170.4	127.9	196.3	113.8	99.1	129.8	November "
ታህሳስ 2012	157.8	179.2	196.2	175.5	131.0	154.1	133.5	189.9	102.4	98.8	129.7	December "
ጥር 2012	155.7	178.7	208.0	172.8	117.2	161.2	141.8	175.2	132.1	99.3	132.2	January 2020
የካቲት 2012	157.4	181.2	211.5	175.0	116.7	156.0	134.7	192.7	106.0	96.7	136.7	February "
መጋቢት 2012	162.9	181.1	212.1	186.9	129.7	166.0	137.7	201.7	109.0	104.5	142.4	March "
ሚያዝያ 2012	169.1	196.9	210.9	186.4	122.9	167.9	139.9	195.4	132.1	138.8	146.1	April "
ግንቦት 2012	175.4	206.2	196.7	187.6	133.2	177.7	137.3	199.6	144.5	144.6	143.1	May "
ሰኔ 2012	179.4	198.1	222.0	191.4	127.7	172.3	144.4	249.2	156.6	138.5	151.0	June "
2013												2020/2021
ሐምሌ 2012	177.4	187.6	219.0	197.0	125.9	172.1	138.7	264.7	156.6	171.3	144.5	July 2020
ነሐሴ 2012	182.2	187.5	219.0	194.0	138.2	173.0	143.8	272.1	156.6	189.0	149.5	August "
መስከረም 2013	179.9	189.2	192.1	194.6	146.5	172.3	141.2	263.4	123.8	187.0	146.6	September "
ጥቅምት 2013	187.9	199.9	194.3	194.0	157.8	197.1	138.2	247.9	150.0	195.5	150.6	October "
ሀዳር 2013	189.6	206.6	218.5	200.7	163.6	217.8	149.3	214.5	123.8	190.3	157.1	November "
ታህሳስ 2013	185.0	201.6	193.6	193.6	160.7	226.2	146.1	209.5	132.1	163.3	158.9	December "
ጥር 2013	184.4	206.5	195.1	210.6	154.7	211.5	147.4	209.2	123.8	173.7	156.3	January 2021

ሠንጠረዥ 5ለ፤ ጠቅላላ የምግብ የሽያጭ ዋጋ መመዘኛ ሊንዲክስና በሥራ የተካተቱ ክፍሎች ለአማራ ብሔራዊ ክልላዊ መንግስት
 ታህሳስ 2009 = 100

Table 5b: General Food Consumer Price Index and Its Components for Amhara National Regional State
 December 2016 = 100

ወርና ዓመት	ዕቃዎች ስርዓት											ወርና ዓመት
	ምግብና አልኮሎሊክ ያልሆኑ መጠቀሻ	ዳቦና ለሀል	ሥጋ	አሰና የባህር ምግቦች	ወተት አይብና ዕንቁላል	ዘይትና ቅባቶች	ፍራፍሬ	አትክልትና ጥራጥራ	ስኳር ማርና ጅኮሊት	ሌሎች ምግቦች	አልኮሎሊክ ያልሆኑ መጠቀሻ	
Month an Year	Food and Non-Alcoholic Beverages	Bread and Cereals	Meat (ND)	Fish and Seafood	Milk, cheese and eggs (ND)	Oils and fats (ND)	Fruit (ND)	Vegetables	Sugar, jam, honey, chocolate.	Food products n.e.c. (ND)	Non-Alcoholic Beverages and coffee	Month an Year
ታህሳስ 2009	100.0	100.0	100.0	0.0	100.0	100.0	100.0	100.0	100.0	100.0	100.0	December 2016
ሐምሌ 2009 - ሰኔ 2010	122.0	132.4	126.2	0.0	127.8	105.1	132.9	107.7	102.7	130.0	105.1	July 2017 - June 2018
ሐምሌ 2009 - ሰኔ 2010	138.2	155.7	152.2	0.0	144.9	108.5	142.2	130.7	106.5	135.2	108.6	July 2018 - June 2019
ሐምሌ 2011 - ሰኔ 2012	171.0	200.5	184.6	0.0	170.7	122.7	186.7	153.1	120.7	175.6	118.4	July 2019 - June 2020
ሐምሌ 2010	134.7	150.9	147.1	0.0	139.1	108.0	131.8	133.4	103.2	126.3	110.1	July 2018
ነሐሴ 2010	134.9	149.6	142.6	0.0	140.1	107.5	141.7	131.9	103.3	132.7	107.5	August "
መስከረም 2011	132.2	150.8	147.1	0.0	139.1	108.0	131.8	121.8	103.2	126.3	110.1	September "
ጥቅምት 2011	132.7	148.8	145.4	0.0	142.2	106.9	131.6	120.2	104.3	133.6	108.2	October "
ሀዳር 2011	132.4	149.5	144.2	0.0	145.8	106.8	135.5	119.6	103.6	132.5	107.2	November "
ታህሳስ 2011	133.4	150.5	143.8	0.0	143.4	107.3	140.0	123.9	103.7	131.6	107.8	December "
ጥር 2011	134.8	153.0	149.4	0.0	141.2	107.6	137.1	123.2	103.7	132.5	108.7	January 2019
የካቲት 2011	135.9	152.5	145.9	0.0	145.2	107.3	145.6	126.4	103.5	136.1	108.8	February "
መጋቢት 2011	139.2	155.2	150.7	0.0	144.4	108.5	145.7	135.6	103.9	136.6	107.7	March "
ሚያዝያ 2011	141.2	163.6	147.3	0.0	142.8	110.1	150.3	126.0	111.3	144.5	106.2	April "
ግንቦት 2011	151.4	165.8	182.7	0.0	157.5	111.6	158.6	150.8	117.8	145.6	109.3	May "
ሰኔ 2011	155.3	178.0	180.4	0.0	157.8	112.2	156.6	155.0	116.9	143.6	111.0	June "
2012												2019/2020
ሐምሌ 2011	158.1	187.4	174.8	0.0	164.4	113.7	178.8	152.7	119.6	147.8	108.1	July 2019
ነሐሴ 2011	163.4	191.2	178.3	0.0	159.0	115.6	182.7	163.4	120.1	153.2	111.4	August "
መስከረም 2012	162.7	191.9	183.7	0.0	170.2	115.9	177.7	163.6	121.9	145.9	111.8	September "
ጥቅምት 2012	157.3	193.9	180.9	0.0	165.0	115.6	185.1	143.2	119.9	141.6	107.9	October "
ሀዳር 2012	161.3	203.4	177.3	0.0	166.4	115.6	190.7	141.9	121.1	148.5	110.4	November "
ታህሳስ 2012	164.3	199.6	181.6	0.0	166.8	114.5	186.1	141.1	121.5	164.5	112.7	December "
ጥር 2012	166.4	197.5	182.9	0.0	170.9	114.4	195.1	144.0	120.7	173.5	109.3	January 2020
የካቲት 2012	174.3	196.9	181.6	0.0	173.6	121.5	186.2	156.2	119.5	192.7	117.3	February "
መጋቢት 2012	181.9	203.5	190.3	0.0	168.3	135.1	191.7	154.0	120.8	207.6	132.2	March "
ሚያዝያ 2012	184.2	210.6	199.1	0.0	170.2	128.6	187.2	153.2	120.6	208.0	130.1	April "
ግንቦት 2012	186.0	212.5	193.8	0.0	183.6	135.4	191.8	152.5	123.1	212.1	132.8	May "
ሰኔ 2012	192.2	217.9	191.1	0.0	190.0	146.5	187.1	171.0	119.9	212.0	137.0	June "
2013												2020/2021
ሐምሌ 2012	199.0	229.8	192.3	0.0	187.4	142.1	188.1	184.8	120.1	213.1	141.3	July 2020
ነሐሴ 2012	201.2	239.6	195.5	0.0	186.9	140.6	184.0	185.6	119.2	207.8	144.1	August "
መስከረም 2013	199.8	244.8	195.0	0.0	188.4	145.2	191.9	175.4	119.3	203.4	144.5	September "
ጥቅምት 2013	200.4	250.1	201.8	0.0	192.7	143.9	192.5	168.0	123.0	202.0	147.6	October "
ሀዳር 2013	198.6	249.7	200.5	0.0	193.5	151.6	198.9	157.4	147.5	201.3	149.7	November "
ታህሳስ 2013	194.7	237.0	205.4	0.0	191.1	156.7	201.9	154.2	146.7	199.1	153.4	December "
ጥር 2013	197.4	241.4	199.3	0.0	198.5	162.0	209.1	160.2	151.1	199.4	155.1	January 2021

ወንጠረዥ 6A፤ ጠቅላላ የምግብ የሽያጭ ዋጋ መመዘኛ ለጊዜያዊ ስራ ለጊዜያዊ ክፍሎች ለቤ/ጉሙዝ ብሔራዊ ክልላዊ መንግስት

ታህሳስ 2009 = 100

Table 6b: General Food Consumer Price Index and Its Components for Beneshangul-Gumuz National Regional State
December 2016 = 100

ወርና ዓመት	ዕቃዎች ስርዓት											ወርና ዓመት
	ምግብና አልኮሎሊክ ያልሆኑ መጠቀሻ	ዳቦና ለሀል	ሥጋ	ገብና የባህር ምግቦች	ወተት አይብና ዕንቁላል	ዘይትና ቅባቶች	ፍራፍሬ	አትክልትና ጥራጥራ	ስኳር ማርና ጅካሊት	ሌሎች ምግቦች	አልኮሎሊክ ያልሆኑ መጠቀሻ	
Month an Year	Food and Non-Alcoholic Beverages	Bread and Cereals	Meat (ND)	Fish and Seafood	Milk, cheese and eggs (ND)	Oils and fats (ND)	Fruit (ND)	Vegetables	Sugar, jam, honey, chocolate.	Food products n.e.c. (ND)	Non-Alcoholic Beverages and coffee	Month an Year
ታህሳስ 2009	100.0	100.0	100.0	100.0	100.0	100.0	100.0	100.0	100.0	100.0	100.0	December 2016
ሐምሌ 2009 - ሰኔ 2010	120.1	140.8	123.4	117.3	107.4	108.7	97.6	113.8	110.2	125.7	95.6	July 2017 - June 2018
ሐምሌ 2009 - ሰኔ 2010	133.8	149.3	149.3	122.5	114.8	113.4	140.6	135.1	112.8	144.7	101.7	July 2018 - June 2019
ሐምሌ 2011 - ሰኔ 2012	173.8	202.1	182.0	139.4	123.6	130.4	137.4	192.5	125.3	200.0	112.1	July 2019 - June 2020
2011												2018/2019
ሐምሌ 2010	127.8	145.7	132.4	120.8	110.1	105.3	96.6	122.0	110.0	142.6	113.2	July 2018
ነሐሴ 2010	128.2	146.8	140.3	116.2	111.1	99.6	115.8	128.8	109.1	127.5	105.7	August "
መስከረም 2011	131.5	144.4	159.3	120.8	113.7	114.2	115.1	134.2	110.7	126.7	101.4	September "
ጥቅምት 2011	128.9	147.7	143.7	120.8	112.8	107.4	116.0	128.2	110.7	131.6	99.7	October "
ሀዳር 2011	128.0	145.0	144.4	120.8	113.7	111.0	120.3	123.6	111.8	135.5	101.0	November "
ታህሳስ 2011	133.6	153.0	144.6	120.8	116.5	112.0	120.3	135.2	111.8	138.5	101.5	December "
ጥር 2011	134.6	154.2	146.9	120.8	113.6	114.7	121.1	132.9	109.4	149.9	102.2	January 2019
የከተማ 2011	132.8	149.6	147.3	120.8	115.6	114.0	194.9	124.3	109.4	162.3	102.1	February "
መጋቢት 2011	131.0	147.3	149.8	120.8	117.0	123.4	188.6	123.5	109.4	150.4	93.6	March "
ሚያዝያ 2011	135.3	146.8	144.5	120.8	116.7	121.9	170.3	139.7	114.4	156.8	99.0	April "
ግንቦት 2011	142.0	149.6	164.6	129.1	118.2	117.5	165.9	157.6	120.9	153.4	99.1	May "
ሰኔ 2011	151.3	161.9	174.0	138.0	118.4	119.5	162.1	171.7	126.5	160.5	102.6	June "
2012												2019/2020
ሐምሌ 2011	160.2	182.8	177.2	138.0	118.6	118.2	134.1	180.6	126.5	168.2	103.9	July 2019
ነሐሴ 2011	163.1	181.1	178.3	138.0	120.1	122.5	113.3	198.7	126.5	154.6	101.2	August "
መስከረም 2012	170.2	195.9	183.1	138.0	122.1	133.6	130.6	203.4	124.4	157.5	98.9	September "
ጥቅምት 2012	165.7	196.7	183.6	138.0	121.8	124.2	140.6	186.3	125.2	153.8	101.5	October "
ሀዳር 2012	169.5	205.4	186.5	138.0	122.5	125.3	126.1	186.3	126.5	162.1	104.9	November "
ታህሳስ 2012	164.9	202.1	167.6	129.1	125.1	119.2	122.3	179.0	127.0	168.2	105.8	December "
ጥር 2012	166.2	197.0	182.7	129.1	123.1	122.3	124.2	177.6	126.5	181.0	109.8	January 2020
የከተማ 2012	173.9	206.5	184.9	138.0	122.7	131.9	138.4	190.2	126.5	180.4	114.6	February "
መጋቢት 2012	178.9	209.6	179.3	138.0	125.1	133.8	135.2	182.2	126.5	259.5	121.4	March "
ሚያዝያ 2012	182.0	214.0	181.1	155.3	123.8	135.6	152.9	192.9	121.4	227.4	129.0	April "
ግንቦት 2012	185.6	211.8	188.5	155.3	129.9	145.6	149.1	193.9	122.9	266.2	124.8	May "
ሰኔ 2012	205.2	222.3	191.3	138.0	128.2	153.0	181.4	238.7	124.6	321.3	129.0	June "
2013												2020/2021
ሐምሌ 2012	220.6	238.8	202.6	146.4	130.3	149.3	157.4	274.6	125.5	343.3	126.4	July 2020
ነሐሴ 2012	225.8	251.2	202.5	155.3	131.9	152.1	129.7	273.7	123.3	348.8	136.8	August "
መስከረም 2013	221.4	265.5	209.6	155.3	130.3	151.2	144.4	230.0	137.9	350.9	143.9	September "
ጥቅምት 2013	219.0	262.2	213.9	138.0	131.2	150.2	138.6	220.0	144.7	340.7	154.1	October "
ሀዳር 2013	228.9	280.0	219.8	155.3	103.5	185.8	160.8	216.9	146.1	389.8	147.7	November "
ታህሳስ 2013	213.6	243.4	229.0	138.0	131.3	165.9	129.7	223.2	160.6	275.5	159.8	December "
ጥር 2013	210.9	237.3	216.6	138.0	105.5	169.9	155.3	218.5	159.1	307.4	157.3	January 2021

ወንጠረዥ 7A፤ ጠቅላላ የምግብ የሽያጭ ዋጋ መመዘኛ ለንዲክስና በሥሩ የተካተቱ ክፍሎች ለድሬዳዋ ከተማ አስተዳደር

ታህሳስ 2009 = 100

Table 7b: General Food Consumer Price Index and Its Components for Dire Dawa City Administration
December 2016 = 100

ወርና ዓመት	ዕቃዎች ስርዓት											ወርና ዓመት
	ምግብና አልኮሎሊክ የልሆኑ መጠቀሚያ	ዳቦና ለሀል	ሥጋ	አሰና የባህር ምግቦች	ወተት አይብና ዕንቁላል	ዘይትና ቅባቶች	ፍራፍሬ	አትክልትና ጥራጥሬ	ስኳር ማርና ጅኮሊት	ሌሎች ምግቦች	አልኮሎሊክ የልሆኑ መጠቀሚያ	
Month an Year	Food and Non-Alcoholic Beverages	Bread and Cereals	Meat (ND)	Fish and Seafood	Milk, cheese and eggs (ND)	Oils and fats (ND)	Fruit (ND)	Vegetables	Sugar, jam, honey, chocolate.	Food products n.e.c. (ND)	Non-Alcoholic Beverages and coffee	Month an Year
ታህሳስ 2009	100.0	100.0	100.0	100.0	100.0	100.0	100.0	100.0	100.0	100.0	100.0	December 2016
ሐምሌ 2009 - ሰኔ 2010	113.5	112.9	114.8	123.0	115.4	104.7	132.5	113.7	105.9	129.4	114.1	July 2017 - June 2018
ሐምሌ 2009 - ሰኔ 2010	136.7	139.6	144.2	137.4	134.1	110.8	147.8	135.6	98.8	200.1	116.0	July 2018 - June 2019
ሐምሌ 2011 - ሰኔ 2012	171.8	176.3	186.0	154.4	158.7	118.9	177.6	180.4	111.0	253.9	135.0	July 2019 - June 2020
2011												2018/2019
ሐምሌ 2010	136.6	130.8	130.7	133.8	130.5	110.1	135.1	149.2	95.0	229.1	124.7	July 2018
ነሐሴ 2010	132.6	131.3	134.6	133.8	129.2	110.2	124.0	131.1	95.0	228.3	121.2	August "
መስከረም 2011	132.3	129.3	141.7	132.3	134.5	108.6	129.3	138.1	95.0	203.2	110.3	September "
ጥቅምት 2011	129.6	134.1	138.2	135.3	132.4	108.7	129.3	120.5	95.0	199.1	109.8	October "
ሀዳር 2011	129.2	135.2	138.2	128.5	131.0	109.1	147.2	118.3	95.0	189.5	111.2	November "
ታህሳስ 2011	128.6	138.7	138.2	131.5	129.0	109.1	145.7	113.4	95.0	177.0	107.0	December "
ጥር 2011	131.7	139.4	140.1	133.1	131.9	111.3	153.4	119.9	95.0	182.7	117.0	January 2019
የካቲት 2011	133.5	141.7	140.1	135.3	130.8	111.6	160.6	120.5	95.0	195.8	119.4	February "
መጋቢት 2011	136.1	143.8	140.1	135.3	131.6	109.2	160.6	127.1	95.0	200.2	122.1	March "
ሚያዝያ 2011	141.9	140.1	140.1	134.6	127.2	112.7	165.3	156.1	110.0	198.1	120.8	April "
ግንቦት 2011	154.5	152.4	173.1	158.5	147.6	118.5	168.4	173.1	110.0	193.8	112.5	May "
ሰኔ 2011	154.3	159.0	175.1	156.9	152.3	110.1	155.0	159.6	110.0	204.0	115.9	June "
2012												2019/2020
ሐምሌ 2011	157.0	164.4	177.0	151.5	152.8	110.2	156.5	158.6	110.0	214.5	115.3	July 2019
ነሐሴ 2011	162.5	170.9	180.9	156.8	159.8	110.1	154.6	169.5	106.6	214.1	113.4	August "
መስከረም 2012	168.3	164.7	175.1	156.9	155.0	115.7	161.5	200.2	110.0	217.6	133.1	September "
ጥቅምት 2012	177.6	175.3	182.8	155.3	164.3	115.6	174.3	216.1	110.0	222.2	132.0	October "
ሀዳር 2012	168.7	179.9	178.9	141.5	162.6	115.4	175.1	171.4	110.0	222.7	132.8	November "
ታህሳስ 2012	163.3	171.5	175.1	147.6	159.7	115.4	181.2	165.3	110.0	217.8	135.9	December "
ጥር 2012	161.3	175.7	175.1	149.0	157.3	113.1	205.5	151.3	110.0	216.8	128.5	January 2020
የካቲት 2012	166.6	175.8	186.8	153.8	155.5	115.5	192.3	167.7	109.2	211.4	142.3	February "
መጋቢት 2012	173.9	179.8	208.7	161.6	154.2	115.4	180.5	168.6	110.0	280.4	147.4	March "
ሚያዝያ 2012	178.5	184.2	175.1	161.6	156.4	133.3	202.2	183.4	113.3	291.3	146.0	April "
ግንቦት 2012	186.3	183.2	210.1	156.1	161.7	133.6	178.0	189.8	113.3	364.3	144.5	May "
ሰኔ 2012	197.4	189.7	206.2	160.8	165.7	133.6	169.9	223.2	120.0	374.2	148.4	June "
2013												2020/2021
ሐምሌ 2012	225.1	201.0	210.1	161.6	164.7	133.6	182.8	309.7	120.0	421.8	151.6	July 2020
ነሐሴ 2012	213.2	204.2	206.2	160.0	164.8	133.6	170.8	250.8	120.0	438.1	155.4	August "
መስከረም 2013	211.3	203.2	208.1	156.9	175.5	133.6	179.9	242.4	120.0	440.3	148.9	September "
ጥቅምት 2013	207.6	208.3	210.1	156.9	176.1	133.5	182.0	222.7	120.0	401.2	159.6	October "
ሀዳር 2013	201.8	212.5	210.1	161.6	174.6	133.6	203.5	198.3	120.0	368.5	152.0	November "
ታህሳስ 2013	202.8	210.4	210.1	161.6	163.3	185.2	187.4	195.4	138.4	333.3	149.3	December "
ጥር 2013	209.2	219.1	210.1	184.7	168.7	185.3	202.7	199.7	138.4	365.6	147.5	January 2021

ደንበኞች ለጸሎት የሚገኝ የጠቅላላ የምግብ የሽያጭ ዋጋ መመዘኛ ለጋምቤላ ብሔራዊ አድልዎ መግቢያ
 ታህሳስ 2009 = 100

Table 8b: General Food Consumer Price Index and Its Components for Gambella National Regional State
 December 2016 = 100

ወርና ዓመት	ዕቃዎች ስርዓት											ወርና ዓመት
	ምግብና አልኮሎሊክ ያልሆኑ መጠቀሻ	ዳቦና ለሀል	ሥጋ	ጎሳና የባህር ምግቦች	ወተት አይብና ዕንቁላል	ዘይትና ቅባቶች	ፍራፍሬ	አትክልትና ጥራጥሬ	ስኳር ማርና ፍክሊት	ሌሎች ምግቦች	አልኮሎሊክ ያልሆኑ መጠቀሻ	
Month an Year	Food and Non-Alcoholic Beverages	Bread and Cereals	Meat (ND)	Fish and Seafood	Milk, cheese and eggs (ND)	Oils and fats (ND)	Fruit (ND)	Vegetables	Sugar, jam, honey, chocolate.	Food products n.e.c. (ND)	Non-Alcoholic Beverages and coffee	Month an Year
ታህሳስ 2009	100.0	100.0	100.0	100.0	100.0	100.0	100.0	100.0	100.0	100.0	100.0	December 2016
ሐምሌ 2009 - ሰኔ 2010	112.9	127.7	118.0	101.4	97.1	110.1	89.2	99.9	99.0	135.4	103.9	July 2017 - June 2018
ሐምሌ 2009 - ሰኔ 2010	129.8	141.5	153.4	110.1	131.5	122.5	117.0	114.4	96.8	143.0	119.1	July 2018 - June 2019
ሐምሌ 2011 - ሰኔ 2012	159.4	182.2	186.2	116.3	162.8	135.6	165.1	148.7	112.9	180.5	112.1	July 2019 - June 2020
2011												2018/2019
ሐምሌ 2010	129.0	154.0	136.7	106.9	114.3	118.6	147.4	107.6	95.8	138.8	118.3	July 2018
ነሐሴ 2010	127.5	147.2	137.7	106.9	123.1	117.2	139.8	106.8	95.8	127.0	126.7	August "
መስከረም 2011	127.0	143.6	138.7	114.3	125.1	121.6	78.4	107.0	95.8	140.7	122.5	September "
ጥቅምት 2011	124.4	130.8	147.5	114.3	125.0	119.0	78.4	110.6	95.8	147.7	121.0	October "
ሀዳር 2011	125.6	137.5	150.0	114.3	126.2	120.9	79.5	102.8	95.8	149.5	122.9	November "
ታህሳስ 2011	124.9	124.2	158.9	106.9	126.4	119.0	78.5	120.4	95.8	146.1	121.1	December "
ጥር 2011	125.2	126.7	161.6	115.7	135.6	122.8	77.8	114.2	95.0	133.1	117.7	January 2019
የካቲት 2011	128.7	134.8	164.8	106.9	141.4	122.8	119.2	112.7	98.5	140.9	116.1	February "
መጋቢት 2011	133.3	143.8	160.4	111.4	144.5	127.1	132.5	114.0	98.5	149.5	119.6	March "
ሚያዝያ 2011	130.2	139.4	150.7	100.0	138.7	125.2	148.8	116.4	95.0	147.5	119.7	April "
ግንቦት 2011	140.2	158.3	163.4	117.1	138.4	126.6	156.9	128.1	100.0	147.4	110.1	May "
ሰኔ 2011	141.4	157.2	170.6	106.9	139.6	128.8	167.5	132.1	100.0	147.4	113.9	June "
2012												2019/2020
ሐምሌ 2011	148.7	175.8	170.7	106.9	141.9	135.4	172.2	136.0	107.6	147.1	108.4	July 2019
ነሐሴ 2011	150.1	175.2	171.0	106.9	142.3	136.5	177.0	141.8	107.6	149.4	109.7	August "
መስከረም 2012	148.8	173.9	169.0	100.0	131.5	126.5	162.3	143.9	112.9	160.5	113.5	September "
ጥቅምት 2012	149.7	164.6	175.2	104.5	142.5	134.2	177.0	146.5	112.9	171.9	116.9	October "
ሀዳር 2012	144.6	162.9	167.6	110.5	143.4	125.0	177.0	134.0	112.9	159.9	111.2	November "
ታህሳስ 2012	148.6	166.6	181.1	110.5	148.1	123.8	177.0	139.8	112.9	158.3	113.5	December "
ጥር 2012	152.5	170.4	189.4	121.2	151.5	119.7	177.0	146.0	106.3	172.0	108.3	January 2020
የካቲት 2012	158.6	174.1	196.1	114.3	164.1	124.2	177.0	154.9	114.4	190.9	109.4	February "
መጋቢት 2012	166.7	206.3	193.6	114.3	174.3	128.0	151.4	139.5	116.6	187.9	110.3	March "
ሚያዝያ 2012	183.4	215.8	203.7	142.9	213.4	147.2	163.5	164.5	114.4	206.2	112.3	April "
ግንቦት 2012	175.0	201.2	210.5	128.6	198.2	163.4	143.5	143.7	120.0	231.2	113.0	May "
ሰኔ 2012	185.6	199.4	206.4	135.5	202.4	163.5	126.9	194.3	116.6	231.2	118.8	June "
2013												2020/2021
ሐምሌ 2012	186.7	213.4	204.8	142.9	219.1	160.7	120.8	170.6	120.0	226.8	119.1	July 2020
ነሐሴ 2012	195.5	230.0	212.9	135.5	217.7	142.6	112.0	189.5	120.0	230.9	122.9	August "
መስከረም 2013	194.1	228.4	212.4	142.9	211.1	164.3	133.8	172.3	117.5	230.8	141.3	September "
ጥቅምት 2013	189.1	214.1	211.9	142.9	217.5	170.9	135.5	160.8	131.5	231.3	147.3	October "
ሀዳር 2013	194.3	221.0	217.3	142.9	206.9	168.8	113.4	176.8	129.6	248.8	144.8	November "
ታህሳስ 2013	188.4	213.3	194.8	135.5	206.7	176.8	133.8	171.0	142.0	231.3	143.3	December "
ጥር 2013	193.6	212.7	229.0	142.9	208.0	178.1	133.8	175.8	146.6	248.8	142.9	January 2021

ደንበኞች 9A፤ ጠቅላላ የምግብ የሽያጭ ዋጋ መወከድ ለጋራ የተከተቱ ክፍሎች ለሐረር ብሔራዊ ክልላዊ መንግስት
 ታህሳስ 2009 = 100

Table 9b: General Food Consumer Price Index and Its Components for Harari National Regional State
 December 2016 = 100

ወርና ዓመት	ደንበኞች ስራዎች											ወርና ዓመት
	ምግብና አልኮሎሊክ ያልሆኑ መጠቀሻ	ዳቦና ለሀል	ሥጋ	አሰና የባህር ምግቦች	ወተት አይብና ዕንቁላል	ዘይትና ቅባቶች	ፍሬፍሬ	አትክልትና ጥራጥራ	ስኳር ማርና ጅካሊት	ሌሎች ምግቦች	አልኮሎሊክ ያልሆኑ መጠቀሻ	
Month an Year	Food and Non-Alcoholic Beverages	Bread and Cereals	Meat (ND)	Fish and Seafood	Milk, cheese and eggs (ND)	Oils and fats (ND)	Fruit (ND)	Vegetables	Sugar, jam, honey, chocolate.	Food products n.e.c. (ND)	Non-Alcoholic Beverages and coffee	Month an Year
ታህሳስ 2009	100.0	100.0	100.0	100.0	100.0	100.0	100.0	100.0	100.0	100.0	100.0	December 2016
ሐምሌ 2009 - ሰኔ 2010	111.9	116.5	106.4	0.0	111.3	116.6	146.2	103.5	109.8	115.5	98.2	July 2017 - June 2018
ሐምሌ 2009 - ሰኔ 2010	128.0	135.3	127.5	0.0	136.1	114.0	140.3	120.2	110.3	132.5	100.3	July 2018 - June 2019
ሐምሌ 2011 - ሰኔ 2012	161.5	176.0	161.1	0.0	162.1	118.0	180.6	161.3	134.9	156.0	115.0	July 2019 - June 2020
2011												2018/2019
ሐምሌ 2010	124.9	126.9	120.6	0.0	131.7	111.3	109.1	135.2	107.5	125.2	103.26	July 2018
ነሐሴ 2010	123.9	130.3	120.2	0.0	131.0	114.0	129.1	116.9	107.5	134.2	101.90	August "
መስከረም 2011	121.6	130.1	123.8	0.0	127.5	113.8	134.8	103.7	105.7	129.8	102.44	September "
ጥቅምት 2011	122.9	134.5	125.2	0.0	132.4	114.0	128.5	96.8	107.6	130.3	100.14	October "
ሀዳር 2011	123.8	133.6	121.1	0.0	132.4	112.3	127.9	110.3	107.6	126.7	97.81	November "
ታህሳስ 2011	124.2	137.0	121.2	0.0	131.7	111.4	130.6	104.5	109.4	126.0	96.55	December "
ጥር 2011	126.9	138.8	120.3	0.0	132.6	111.4	130.6	113.9	109.4	131.1	99.10	January 2019
ፀደቅ 2011	124.5	137.0	118.0	0.0	132.9	113.1	144.2	104.6	108.5	128.2	99.53	February "
መጋቢት 2011	126.3	133.9	120.3	0.0	141.7	116.7	138.0	114.1	109.4	133.2	100.16	March "
ሚያዝያ 2011	131.9	134.1	129.9	0.0	132.2	114.4	160.7	143.3	116.8	141.4	99.27	April "
ግንቦት 2011	140.8	144.6	156.7	0.0	140.6	117.5	173.0	145.5	116.8	138.1	100.79	May "
ሰኔ 2011	143.8	142.7	152.3	0.0	166.1	117.5	177.0	153.7	116.8	145.4	102.17	June "
2012												2019/2020
ሐምሌ 2011	144.6	150.4	152.5	0.0	154.8	115.3	157.0	148.1	114.0	145.0	101.68	July 2019
ነሐሴ 2011	155.2	162.4	160.1	0.0	162.7	117.3	178.1	166.0	116.8	150.3	107.60	August "
መስከረም 2012	161.8	170.1	159.1	0.0	162.4	124.0	176.5	180.7	134.9	150.8	109.80	September "
ጥቅምት 2012	162.6	174.8	159.6	0.0	162.4	117.3	182.7	177.7	137.3	149.1	103.33	October "
ሀዳር 2012	159.5	174.2	158.8	0.0	162.4	117.2	177.3	157.5	144.8	147.7	109.57	November "
ታህሳስ 2012	157.8	177.6	156.1	0.0	163.4	117.7	184.0	139.7	144.8	146.4	108.26	December "
ጥር 2012	158.5	176.2	159.8	0.0	161.0	117.7	181.0	140.7	144.8	169.7	109.22	January 2020
ፀደቅ 2012	159.3	178.8	159.3	0.0	161.0	117.8	182.4	141.3	144.8	152.2	115.97	February "
መጋቢት 2012	159.9	173.3	168.4	0.0	161.0	117.6	185.8	147.1	148.2	149.3	132.26	March "
ሚያዝያ 2012	166.1	184.9	161.2	0.0	167.5	117.8	185.3	157.2	116.8	170.3	130.00	April "
ግንቦት 2012	170.6	194.9	159.4	0.0	162.0	118.0	190.7	166.5	116.8	164.1	124.49	May "
ሰኔ 2012	182.3	194.7	178.6	0.0	165.4	118.0	186.3	213.0	154.7	177.4	127.58	June "
2013												2020/2021
ሐምሌ 2012	190.3	210.3	179.5	0.0	165.7	118.1	170.1	227.0	116.8	182.7	126.80	July 2020
ነሐሴ 2012	190.7	207.3	179.5	0.0	166.1	118.2	166.3	229.0	122.4	211.5	126.08	August "
መስከረም 2013	188.2	205.5	180.4	0.0	165.3	118.3	162.5	221.6	122.4	204.5	123.15	September "
ጥቅምት 2013	195.0	217.8	181.3	0.0	165.3	118.3	189.6	217.6	177.0	207.7	124.69	October "
ሀዳር 2013	192.7	221.1	180.6	0.0	191.1	118.7	184.4	185.5	150.2	200.4	126.47	November "
ታህሳስ 2013	189.5	219.9	179.7	0.0	183.5	118.7	183.1	175.1	150.2	196.6	127.54	December "
ጥር 2013	191.2	219.6	178.9	0.0	186.0	118.7	185.5	183.4	150.2	199.7	130.56	January 2021

ሠንጠረዥ 10A፤ ጠቅላላ የምግብ የሽያጭ ዋጋ መመዘኛ ለንዲክስና በሥራ የተካተቱ ክፍሎች ለአድሚኒስትሬሽን ክፍል የሚገኝ ሠንጠረዥ
 ታህሳስ 2009 = 100

Table 10b: General Food Consumer Price Index and Its Components for Oromia National Regional State
 December 2016 = 100

ወርና ዓመት	ዕቃዎች ስርዓት											ወርና ዓመት
	ምግብና አልኮሎሊክ ያልሆኑ መጠቀሻ	ዳቦና ለሀላ	ሥጋ	አሰና የባህር ምግቦች	ወተት አይብና ዕንቁላል	ዘይትና ቅባቶች	ፍሬፍሬ	አትክልትና ጥሬጥሬ	ስኳር ማርና ጅኮሊት	ሌሎች ምግቦች	አልኮሎሊክ ያልሆኑ መጠቀሻ	
Month an Year	Food and Non-Alcoholic Beverages	Bread and Cereals	Meat (ND)	Fish and Seafood	Milk, cheese and eggs (ND)	Oils and fats (ND)	Fruit (ND)	Vegetables	Sugar, jam, honey, chocolate.	Food products n.e.c. (ND)	Non-Alcoholic Beverages and coffee	Month an Year
ታህሳስ 2009	100.0	100.0	100.0	0.0	100.0	100.0	100.0	100.0	100.0	100.0	100.0	December 2016
ሐምሌ 2009 - ሰኔ 2010	116.5	127.3	115.5	0.0	119.1	86.9	135.8	117.9	82.3	134.0	102.8	July 2017 - June 2018
ሐምሌ 2009 - ሰኔ 2010	129.8	141.9	134.9	0.0	142.5	86.1	153.2	137.7	79.6	148.6	107.2	July 2018 - June 2019
ሐምሌ 2011 - ሰኔ 2012	160.8	185.6	164.4	0.0	156.7	93.4	186.7	185.2	86.8	166.9	119.0	July 2019 - June 2020
2011												2018/2019
ሐምሌ 2010	122.1	135.8	127.0	0.0	130.7	79.3	143.4	120.8	71.7	142.3	112.5	July 2018
ነሐሴ 2010	123.5	136.9	128.2	0.0	134.0	84.3	148.5	119.9	77.5	146.3	111.4	August "
መስከረም 2011	125.6	137.2	130.0	0.0	139.4	83.0	146.7	128.0	75.5	147.2	110.7	September "
ጥቅምት 2011	125.1	137.4	130.0	0.0	140.7	87.1	148.6	124.1	78.7	142.6	111.3	October "
ሀዳር 2011	123.6	136.7	128.0	0.0	133.6	82.6	148.4	123.8	73.0	144.0	110.2	November "
ታህሳስ 2011	124.7	137.6	129.3	0.0	136.6	85.8	149.3	126.3	77.8	143.4	107.4	December "
ጥር 2011	126.3	137.5	134.4	0.0	140.5	85.9	150.2	132.5	76.6	148.7	101.3	January 2019
የከተት 2011	127.6	138.0	136.0	0.0	143.7	84.3	153.7	132.7	80.4	157.5	102.2	February "
መጋቢት 2011	130.0	140.5	134.7	0.0	144.8	81.3	155.2	142.9	81.9	151.9	103.3	March "
ሚያዝያ 2011	136.8	148.3	134.0	0.0	146.2	89.9	157.6	158.1	84.5	149.1	104.4	April "
ግንቦት 2011	145.3	155.8	152.1	0.0	159.8	94.2	165.0	173.2	88.3	153.5	104.4	May "
ሰኔ 2011	147.1	160.6	155.2	0.0	159.8	96.0	171.5	170.5	89.1	156.1	106.6	June "
2012												2019/2020
ሐምሌ 2011	148.6	168.7	151.2	0.0	150.0	106.1	174.2	162.6	94.2	155.1	109.3	July 2019
ነሐሴ 2011	153.2	175.7	160.1	0.0	153.4	84.8	180.9	175.6	97.2	161.7	113.0	August "
መስከረም 2012	154.9	177.1	164.3	0.0	155.3	86.8	189.4	180.6	85.6	160.6	112.2	September "
ጥቅምት 2012	155.0	180.6	160.5	0.0	153.2	86.3	188.4	178.3	82.8	158.6	113.4	October "
ሀዳር 2012	156.0	187.8	161.7	0.0	153.5	85.9	189.0	171.9	84.4	158.0	114.1	November "
ታህሳስ 2012	153.3	181.0	165.4	0.0	147.3	92.6	188.7	166.8	86.4	158.3	114.1	December "
ጥር 2012	153.6	177.5	163.2	0.0	152.6	86.9	188.8	171.0	81.6	164.1	118.3	January 2020
የከተት 2012	160.7	180.5	164.1	0.0	163.1	89.9	189.5	190.2	86.4	169.6	120.6	February "
መጋቢት 2012	167.9	188.9	163.9	0.0	158.0	108.4	190.8	195.3	83.1	180.5	127.1	March "
ሚያዝያ 2012	171.3	200.7	170.1	0.0	162.4	94.9	190.8	200.2	82.8	175.5	125.7	April "
ግንቦት 2012	173.6	203.3	173.9	0.0	168.5	92.8	190.8	201.3	90.7	179.8	127.9	May "
ሰኔ 2012	181.5	205.2	173.8	0.0	163.7	104.9	179.5	228.3	86.5	181.5	131.9	June "
2013												2020/2021
ሐምሌ 2012	188.8	211.3	172.7	0.0	162.1	103.6	187.8	244.9	85.8	196.7	136.6	July 2020
ነሐሴ 2012	186.8	217.2	172.1	0.0	164.7	100.8	186.3	222.6	86.4	192.9	149.2	August "
መስከረም 2013	187.3	224.6	178.1	0.0	172.2	102.5	188.0	208.5	82.6	194.5	150.1	September "
ጥቅምት 2013	190.3	227.2	175.8	0.0	169.7	107.2	187.6	214.5	86.9	197.3	152.8	October "
ሀዳር 2013	190.0	225.9	175.6	0.0	169.4	112.1	184.7	207.0	95.9	203.4	157.4	November "
ታህሳስ 2013	187.5	221.3	179.1	0.0	172.8	123.1	183.7	199.5	98.4	198.3	152.9	December "
ጥር 2013	190.4	221.1	181.3	0.0	173.2	118.4	189.8	213.7	97.5	200.9	152.6	January 2021

ሠንጠረዥ 11A፤ ጠቅላላ የምግብ የሽያጭ ዋጋ መመዘኛ ለንዲክስና በሥራ የተካተቱ ክፍሎች ለደቡብ ብሔራዊ አልላዊ መንግስት
 ታህሳስ 2009 = 100

Table 11b: General Food Consumer Price Index and Its Components for SNNP National Regional State
 December 2016 = 100

ወርና ዓመት	ዕቃዎች ስርዓት											ወርና ዓመት
	ምግብና አልኮሎሊክ ያልሆኑ መጠቀሻ	ዳቦና ለሀል	ሥጋ	አሰና የባህር ምግቦች	ወተት አይብና ዕንቁላል	ዘይትና ቅባቶች	ፍሬፍሬ	አትክልትና ጥራጥራ	ስኳር ማርና ፍክሊት	ሌሎች ምግቦች	አልኮሎሊክ ያልሆኑ መጠቀሻ	
Month an Year	Food and Non-Alcoholic Beverages	Bread and Cereals	Meat (ND)	Fish and Seafood	Milk, cheese and eggs (ND)	Oils and fats (ND)	Fruit (ND)	Vegetables	Sugar, jam, honey, chocolate.	Food products n.e.c. (ND)	Non-Alcoholic Beverages and coffee	Month an Year
ታህሳስ 2009	100.0	100.0	100.0	0.0	100.0	100.0	100.0	100.0	100.0	100.0	100.0	December 2016
ሐምሌ 2009 - ሰኔ 2010	120.5	128.4	121.2	0.0	118.8	113.2	131.8	117.9	102.9	119.1	116.3	July 2017 - June 2018
ሐምሌ 2009 - ሰኔ 2010	132.1	140.3	143.7	0.0	136.8	120.3	147.6	137.0	103.0	131.9	122.3	July 2018 - June 2019
ሐምሌ 2011 - ሰኔ 2012	164.5	172.6	180.8	0.0	161.5	137.5	196.7	166.0	122.2	143.4	144.6	July 2019 - June 2020
2011												2018/2019
ሐምሌ 2010	129.3	139.1	139.0	0.0	128.8	116.8	130.0	121.0	100.8	133.7	132.0	July 2018
ነሐሴ 2010	129.6	139.3	137.5	0.0	127.0	117.9	123.5	125.8	100.9	132.5	135.0	August "
መስከረም 2011	129.6	135.0	138.5	0.0	126.5	119.7	136.6	128.9	100.9	130.2	135.9	September "
ጥቅምት 2011	128.6	132.6	136.4	0.0	131.7	117.9	148.5	126.3	100.7	131.4	133.6	October "
ሀዳር 2011	128.8	133.8	137.9	0.0	132.2	118.3	145.1	126.3	101.2	131.6	120.3	November "
ታህሳስ 2011	128.2	133.4	139.3	0.0	133.8	118.6	149.6	127.6	101.1	133.4	113.4	December "
ጥር 2011	128.0	134.2	141.8	0.0	135.0	121.3	150.2	131.2	101.1	130.8	111.6	January 2019
የከተት 2011	128.5	136.6	142.7	0.0	140.1	119.7	149.0	137.8	101.4	129.7	112.9	February "
መጋቢት 2011	130.5	137.0	140.0	0.0	140.7	120.2	155.2	147.0	102.4	129.2	115.4	March "
ሚያዝያ 2011	135.8	149.3	143.3	0.0	143.0	124.5	154.0	151.7	104.0	130.9	115.9	April "
ግንቦት 2011	143.4	154.6	163.3	0.0	144.1	125.3	171.6	160.3	107.2	133.5	120.5	May "
ሰኔ 2011	145.4	159.1	165.1	0.0	158.2	123.7	158.2	160.0	114.7	136.1	121.2	June "
2012												2019/2020
ሐምሌ 2011	150.2	165.2	170.4	0.0	152.3	126.4	156.9	156.0	114.2	138.0	127.7	July 2019
ነሐሴ 2011	152.2	172.1	169.6	0.0	154.1	129.8	162.2	162.5	116.8	136.6	131.2	August "
መስከረም 2012	157.1	171.6	173.9	0.0	154.9	137.4	176.0	165.0	123.5	136.8	135.8	September "
ጥቅምት 2012	160.2	169.4	174.6	0.0	156.8	138.3	189.9	160.5	120.8	139.1	143.5	October "
ሀዳር 2012	160.0	163.0	177.2	0.0	163.1	134.0	211.6	160.5	119.6	140.4	138.2	November "
ታህሳስ 2012	156.5	158.6	171.0	0.0	162.2	132.3	193.3	161.1	121.7	135.7	137.8	December "
ጥር 2012	157.4	159.9	178.8	0.0	168.2	137.3	196.5	158.4	121.3	143.8	138.0	January 2020
የከተት 2012	162.5	165.2	180.3	0.0	167.1	136.1	216.9	169.1	121.7	139.1	141.3	February "
መጋቢት 2012	168.4	171.5	189.3	0.0	159.6	137.1	210.2	168.7	122.9	147.9	153.1	March "
ሚያዝያ 2012	179.3	185.3	195.0	0.0	163.0	144.5	226.2	176.9	127.6	151.2	155.8	April "
ግንቦት 2012	183.1	192.7	193.6	0.0	167.8	148.3	208.2	170.6	128.3	153.9	166.0	May "
ሰኔ 2012	186.9	196.9	195.7	0.0	169.6	148.2	212.4	182.1	127.3	159.0	167.3	June "
2013												2020/2021
ሐምሌ 2012	191.2	197.2	196.1	0.0	171.6	153.4	205.6	181.9	122.3	170.1	170.3	July 2020
ነሐሴ 2012	195.9	207.3	194.6	0.0	166.1	152.6	180.4	191.9	121.2	187.3	176.8	August "
መስከረም 2013	201.3	213.3	201.8	0.0	175.2	155.0	179.5	192.9	126.4	205.2	186.1	September "
ጥቅምት 2013	204.2	210.5	204.7	0.0	179.6	152.6	193.0	191.6	124.8	215.0	194.7	October "
ሀዳር 2013	203.2	210.5	201.0	0.0	185.4	154.9	201.8	187.9	141.4	216.2	190.0	November "
ታህሳስ 2013	199.4	210.0	200.7	0.0	183.7	164.0	193.0	181.6	151.5	202.8	175.4	December "
ጥር 2013	203.4	213.2	205.5	0.0	191.6	169.4	205.0	198.2	148.7	212.5	170.3	January 2021

ሠንጠረዥ 12A፤ ጠቅላላ የምግብ የሽያጭ ዋጋ መመዘኛ ሊንዲክስና በሥራ የተካተቱ ክፍሎች ለሱማሌ ብሔራዊ አልላዊ መንግስት
 ታህሳስ 2009 = 100

Table 12b: General Food Consumer Price Index and Its Components for Somali National Regional State
 December 2016 = 100

ወርና ዓመት	ዕቃዎች ስርዓት											ወርና ዓመት
	ምግብና አልኮሎሊክ ያልሆኑ መጠቀሻ	ግብና ለሀይ	ሥጋ	አሰና የባህር ምግቦች	ወተት አይብና ዕንቁላል	ዘይትና ቅባቶች	ፍራፍሬ	አትክልትና ጥራጥሬ	ስኳር ማርና ጅክሊት	ሌሎች ምግቦች	አልኮሎሊክ ያልሆኑ መጠቀሻ	
Month an Year	Food and Non-Alcoholic Beverages	Bread and Cereals	Meat (ND)	Fish and Seafood	Milk, cheese and eggs (ND)	Oils and fats (ND)	Fruit (ND)	Vegetables	Sugar, jam, honey, chocolate.	Food products n.e.c. (ND)	Non-Alcoholic Beverages and coffee	Month an Year
ታህሳስ 2009	100.0	100.0	100.0	0.0	100.0	100.0	100.0	100.0	100.0	100.0	100.0	December 2016
ሐምሌ 2009 - ሰኔ 2010	113.7	119.3	118.1	0.0	99.7	100.3	118.3	136.5	105.3	139.3	103.2	July 2017 - June 2018
ሐምሌ 2009 - ሰኔ 2010	132.5	140.2	128.3	0.0	116.1	107.0	123.7	139.4	134.5	164.8	112.2	July 2018 - June 2019
ሐምሌ 2011 - ሰኔ 2012	159.4	179.4	165.4	0.0	134.6	124.7	145.3	196.3	126.4	205.3	129.2	July 2019 - June 2020
2011												2018/2019
ሐምሌ 2010	126.1	138.1	122.0	0.0	105.4	101.1	134.0	142.5	116.6	147.5	116.7	July 2018
ነሐሴ 2010	130.0	139.4	122.1	0.0	116.9	101.1	131.1	118.3	136.1	146.2	107.9	August "
መስከረም 2011	130.8	137.9	114.8	0.0	117.2	101.2	122.2	142.9	136.1	147.9	111.1	September "
ጥቅምት 2011	128.5	137.6	120.9	0.0	106.6	100.7	116.3	131.5	136.1	145.7	119.3	October "
ሀዳር 2011	128.3	138.0	109.6	0.0	107.6	100.8	116.9	130.2	136.1	147.9	110.7	November "
ታህሳስ 2011	128.9	137.9	123.0	0.0	110.5	101.0	117.9	124.7	136.1	149.3	112.9	December "
ጥር 2011	131.3	138.6	123.0	0.0	112.2	109.8	120.0	131.5	136.1	177.3	108.8	January 2019
ፀደቅ 2011	131.3	136.3	131.0	0.0	115.0	113.6	120.0	132.2	136.1	177.4	108.7	February "
መጋቢት 2011	133.2	137.7	144.2	0.0	122.3	114.6	124.9	130.2	136.1	172.6	108.7	March "
ሚያዝያ 2011	135.3	138.8	129.6	0.0	126.5	117.0	112.3	142.6	136.1	184.6	109.5	April "
ግንቦት 2011	141.4	148.7	146.5	0.0	127.0	109.2	127.7	166.9	136.1	186.4	108.7	May "
ሰኔ 2011	145.2	153.3	152.7	0.0	125.7	114.3	141.5	179.0	136.1	195.0	122.8	June "
2012												2019/2020
ሐምሌ 2011	149.9	160.8	166.5	0.0	130.1	125.0	144.0	171.6	136.1	195.3	118.3	July 2019
ነሐሴ 2011	153.5	164.6	164.2	0.0	132.4	126.2	146.3	188.1	136.1	201.0	129.6	August "
መስከረም 2012	161.8	172.6	146.5	0.0	162.1	126.2	154.2	195.9	136.1	202.3	126.6	September "
ጥቅምት 2012	161.1	178.5	147.9	0.0	138.1	123.2	143.0	209.7	136.1	197.0	126.6	October "
ሀዳር 2012	164.0	191.6	161.4	0.0	121.8	122.1	153.3	195.6	136.1	203.0	127.1	November "
ታህሳስ 2012	161.9	186.7	158.7	0.0	127.0	122.4	136.5	184.7	136.1	202.3	131.5	December "
ጥር 2012	160.5	188.9	160.9	0.0	126.6	131.6	138.8	182.0	116.6	215.7	127.4	January 2020
ፀደቅ 2012	156.3	178.5	167.4	0.0	135.9	126.7	143.0	172.5	116.6	204.7	132.2	February "
መጋቢት 2012	159.4	182.2	165.3	0.0	138.9	125.0	147.9	189.1	116.6	207.1	133.7	March "
ሚያዝያ 2012	163.1	187.7	175.4	0.0	139.1	125.4	154.5	198.0	116.6	210.7	138.5	April "
ግንቦት 2012	161.5	183.7	184.4	0.0	137.6	112.3	135.0	219.1	116.6	214.7	130.2	May "
ሰኔ 2012	160.0	177.5	185.8	0.0	126.1	129.7	146.6	248.9	116.6	210.0	129.0	June "
2013												2020/2021
ሐምሌ 2012	162.9	176.6	187.8	0.0	124.5	130.0	150.4	294.9	116.6	218.4	135.5	July 2020
ነሐሴ 2012	169.2	186.2	185.5	0.0	153.6	133.0	144.3	256.1	116.6	214.1	134.3	August "
መስከረም 2013	166.8	186.2	184.1	0.0	149.5	136.4	141.2	237.8	116.6	193.3	130.3	September "
ጥቅምት 2013	165.9	184.7	182.3	0.0	158.6	137.1	147.5	211.4	116.6	192.4	130.1	October "
ሀዳር 2013	166.5	183.4	184.8	0.0	166.9	140.3	149.1	206.1	116.6	193.3	125.9	November "
ታህሳስ 2013	170.1	194.1	182.6	0.0	158.4	140.4	148.7	209.4	116.6	192.3	127.4	December "
ጥር 2013	177.3	199.1	191.2	0.0	182.5	148.6	143.5	216.7	116.6	185.9	127.1	January 2021

ሠንጠረዥ 13A፤ ጠቅላላ የምግብ የሽያጭ ዋጋ መመዘኛ ሊንዲክስ በሥራ የተካተቱ ክፍሎች ለትግራይ ብሔራዊ ክልላዊ መንግስት
 ታህሳስ 2009 = 100

Table 13b: General Food Consumer Price Index and Its Components for Tigray National Regional State
 December 2016 = 100

ወርና ዓመት	ዕቃዎች ስርዓት											ወርና ዓመት
	ምግብና አልኮሎሊክ ያልሆኑ መጠቀሻ	ዳቦና ለሀል	ሥጋ	አሰና የባህር ምግቦች	ወተት አይብና ዕንቁላል	ዘይትና ቅባቶች	ፍራፍሬ	አትክልትና ጥራጥራ	ስኳር ማርና ጅኮሊት	ሌሎች ምግቦች	አልኮሎሊክ ያልሆኑ መጠቀሻ	
Month an Year	Food and Non-Alcoholic Beverages	Bread and Cereals	Meat (ND)	Fish and Seafood	Milk, cheese and eggs (ND)	Oils and fats (ND)	Fruit (ND)	Vegetables	Sugar, jam, honey, chocolate.	Food products n.e.c. (ND)	Non-Alcoholic Beverages and coffee	Month an Year
ታህሳስ 2009	100.0	100.0	100.0	0.0	100.0	100.0	100.0	100.0	100.0	100.0	100.0	December 2016
ሐምሌ 2009 - ሰኔ 2010	118.0	126.4	128.0	0.0	119.0	103.6	108.9	107.8	95.9	113.0	106.4	July 2017 - June 2018
ሐምሌ 2009 - ሰኔ 2010	145.4	168.4	155.2	0.0	145.7	106.3	139.6	122.3	95.2	148.0	111.9	July 2018 - June 2019
ሐምሌ 2011 - ሰኔ 2012	183.4	210.0	201.5	0.0	183.4	131.5	155.9	175.0	104.8	166.6	130.8	July 2019 - June 2020
2011												2018/2019
ሐምሌ 2010	133.9	154.1	146.3	0.0	132.2	105.0	111.0	110.1	93.3	129.6	111.6	July 2018
ነሐሴ 2010	131.6	146.7	143.7	0.0	141.0	105.3	111.9	103.4	93.3	145.0	110.3	August "
መስከረም 2011	141.6	158.0	156.9	0.0	143.6	98.1	113.8	125.8	93.3	145.0	111.8	September "
ጥቅምት 2011	144.4	170.6	147.9	0.0	149.5	104.9	139.8	122.3	93.3	144.5	110.3	October "
ሀዳር 2011	145.4	170.2	155.1	0.0	151.1	107.1	140.3	120.0	93.3	145.9	110.3	November "
ታህሳስ 2011	144.4	170.4	151.5	0.0	137.8	106.9	141.2	123.3	93.9	139.6	109.7	December "
ጥር 2011	143.9	169.5	147.6	0.0	146.4	106.0	143.9	117.9	93.9	148.4	112.3	January 2019
የካቲት 2011	143.6	166.2	149.9	0.0	152.8	107.2	145.9	118.7	93.9	150.6	111.1	February "
መጋቢት 2011	149.0	174.4	158.8	0.0	134.5	107.0	147.5	119.2	93.9	161.8	111.5	March "
ሚያዝያ 2011	151.2	180.1	161.1	0.0	134.0	104.1	145.8	123.0	95.3	154.8	113.2	April "
ግንቦት 2011	157.0	179.2	167.9	0.0	157.7	112.1	150.2	142.7	102.6	156.0	115.3	May "
ሰኔ 2011	159.4	181.6	175.8	0.0	167.5	111.9	183.8	141.0	102.8	155.3	115.6	June "
2012												2019/2020
ሐምሌ 2011	166.4	193.6	183.0	0.0	180.7	108.9	165.6	149.6	104.9	155.4	116.0	July 2019
ነሐሴ 2011	172.8	199.9	184.4	0.0	179.1	110.5	157.5	171.2	103.1	159.1	113.3	August "
መስከረም 2012	175.5	200.7	190.4	0.0	182.3	115.7	117.4	183.0	105.0	152.3	114.1	September "
ጥቅምት 2012	177.5	208.2	194.7	0.0	196.8	120.2	157.9	175.7	104.1	143.2	115.3	October "
ሀዳር 2012	174.9	204.4	194.3	0.0	196.5	120.5	156.4	164.0	104.6	149.3	117.1	November "
ታህሳስ 2012	172.9	200.6	204.0	0.0	173.7	124.6	161.4	153.6	104.2	146.8	119.7	December "